



Most Anything At A Glance

- By Abigail -

Well, folks, everyone is excited with the "new" Emmitsburg Chronicle. A lot of work has gone into it, so let's really get behind it and give it our wholehearted support.

Was 1975 a good year for Emmitsburg? Did we meet the challenges our issues raised? Did we solve the problems?

On the positive side, Emmitsburg Municipality pool opened its doors in July. A Citizens' Committee formed to deal with problems that beset small towns. Emmitsburg's Little America series was so successful that it was chosen to represent the state of Maryland in a National survey of bicentennial projects. Through the Little America series, citizens of Emmitsburg became more aware of their heritage. Interest in the local Historical Society blossomed. Historical zoning was widely discussed. World attention was focused on Emmitsburg with the canonization of Mother Seton.

On the negative side, Emmitsburg, like so many other small towns, was constantly plagued with financial difficulties. In order to work out a solution to this problem, there was a proposed increase in water and sewer rates. Concern over our water supply kept our town fathers busy. Though our chances of getting a district court commissioner looked good, it never materialized. The Emmitsburg Chronicle stopped printing in September leaving the citizens without a means of communication.

Have these problems been solved? Well, the Emmitsburg Chronicle is back in circulation. The increase in water and sewer rates is coming up. The proposed District court commissioner is still in the office. Our water problems are still with us. Money problems still plague us.

Was 1975 a good year for Emmitsburg? I keep asking myself that!

The new editor of the Chronicle tells me she has received many congratulatory letters from far-away subscribers. Seems like everyone is really glad the Chronicle is back. I'm sure glad all our out-of-town citizens are once again getting the news. They may be far away, but they are still part of us.

I think it's a shame that people from other places can come into Emmitsburg and take advantage of the investment opportunities that exist in this small town. Local people, working together, would only have the best interest of the community at heart. Think about it!

Mount Holds Nite Classes

Bernard Kaliss, Dean of Academic Studies has announced the schedule of classes for the Spring Evening Division at Mount Saint Mary's College, Emmitsburg, Md. This will be the second year that the College has held evening classes on campus. Dean Kaliss hopes to continue expanding the program so as to include courses outside of the regular curriculum.

Registration for the courses will take place Thursday, January 29 at 9:30 to 11:00 a.m. and 1:30 p.m. to 4:00 p.m. in the Data Processing Room; and 6:30 p.m. to 8:00 p.m. in the Registrar's Office, Administration Building. There is a \$10 registration fee and tuition is \$45 per credit.

The spring semester courses will be: **Biology 420: General Virology** (3 credits) Thursdays: 7:00 p.m.-9:30 p.m. A survey of the general principles and procedures of virology. Includes viral replication, immunology, classification, oncogenicity, pathogenesis and techniques utilizing both *in vivo* and *in vitro* methods. Instructor: Dr. Gerard J. Spahn. Classroom: Science Building 208. Prerequisites: Two semesters of biology and one semester of Organic Chemistry. (This is a lecture class only. There is no laboratory.)

English 219: English Literature II (3 credits) Mondays: 6:30 p.m.-9:00 p.m. This course will look at Romantic, Victorian and Modern Literature written in England. We will consider the important works of the most important writers: Blake, Wordsworth, Coleridge, Byron, Shelley, Keats, Tennyson, Browning, what happens in the literature and what happens in society, in thought in science, in religion that influences the literature. Instructor: Dr. Stephen H. Good. Classroom: Academic Center 219. Prerequisites: none.

English 372: Special Topics: Film Comedy (3 credits). Mondays: 6:30 p.m. - 9:00 p.m. This course will investigate the various types of comedy in the work of major performers and director in the American cinema from silent films to the present. Class periods will be devoted to brief introductory lectures, screenings, and analysis of films. There will be a mid-term and final



Dr. Thomas Duncan is Project Coordinator of the Parent-Child Home Visitation Program.

Dr. Duncan to Address E-burg PTA

Highlighting the meeting of the Emmitsburg PTA on Wednesday, January 28 at 7:30 will be a presentation by Dr. Thomas Duncan, Project Coordinator of the Parent/Child Home Visitation Program, which is sponsored by the Frederick County Board of Education.

Dr. Duncan began his position as Project Coordinator August 25, 1975. He is a native of North Haven, Connecticut and a former elementary teacher in New York City and Connecticut schools. He has served as Professor of Education in Tennessee and Connecticut Teachers' Colleges. Dr. Duncan is also a former editor of Harcourt, Brace and Jananovich, Publishers of Educational Materials from Pre-School through High School. His Doctorate in Early Childhood Education was received at New York University.

The Parent/Child Home Visitation Program is a program which will provide parents of children, new-born to four years of age, with a child development program in their own homes and provide an educational

program for parents concerning parenting.

Through home visitations, parents will be encouraged to provide experiences and home environments so that children's potentials can be reached. Group sessions for parents and children offer an opportunity to be with other children, thereby learning from each other.

Child Development Specialists and Home Visitors on the staff are planning an individual educational program for each child based on his need. Activities include motor development, language development, sensory development and building self concept.

Emmitsburg citizens are now able to visit their new Toy Lending Library, located at Seton Center. Opened just last Saturday, January 17, it enables parents to provide educational toys for their three and four year olds through the use of a library. Other toy lending libraries will be opened in strategic spots in

Frederick County in the near future.

Dr. Duncan will discuss in detail his work with the Parent/Child Home Visitation Program and will answer questions following his presentation. Persons may meet him informally following the meeting when refreshments will be served by the parents of second and third graders.

An invitation has been extended to area residents to attend the January

Tax Phase-in Law Applied Statewide

Attorney General Francis B. Burch, in an opinion requested by State Supervisor of Assessments William E. Smith, has advised that the property tax "phase-in" law applies statewide, despite the fact that assessments are now conducted on an annual basis.

The 1972 "phase-in" law provides that property is to be assessed at least once every three years and that if the assessment is increased by more than 36 percent over that period, the excess will be phased in over the ensuing three years. The "phase-in" law does not apply if the property is transferred to a new owner, if its zoning classification or use is changed, if extensive improvements are made to the property or if the previous assessment is erroneous, Mr. Burch said.

Mr. Burch said that the opinion of his office was requested specifically on the question of whether the "phase-in" law applies to Baltimore City, where many properties had not been reassessed for three years or more and where a substantial number of properties had been reassessed for more than 36 percent for the 1976-77 tax year.

Reiterating the position taken in a 1974 opinion of his office, Mr. Burch said that because assessments are now made on an annual basis, the "phase-in" places a ceiling of 36 percent plus one-third of the excess over that percentage on the assessment in

the first year, but does not apply in the second year unless that assessment also exceeds 36 percent. However, where property has not been reassessed for three years or more, as in the case with much of the property in Baltimore City, the "phase-in" law clearly applies, he said.

The Attorney General's opinion was also sought on the question of whether the exception from the "phase-in" for erroneous assessments can be applied to Baltimore City, where some of the records of previous assessments are incomplete. On this issue, Mr. Burch said, "The purpose of 'phase-in' is to provide relief to taxpayers who are facing drastically increased assessments caused by high inflation and infrequent assessments in the past. The purpose of the (erroneous assessment) exception is to deny that relief where the increase is attributable to a former assessment that was clearly erroneous because of errors in calculation or measurement of the improvements. Implicit in this exception is the fact that those errors must have caused the assessment to be substantially lower than a proper assessment would have been and correction of those errors has caused a substantial assessment increase." Therefore, Mr. Burch concluded that "phase-in" relief should not be denied for minor errors in the prior assessment and that the burden was on assessing authorities to prove disqualification under the exception.

28th meeting and to learn about the pre-school program that is available locally.

Adult Education Classes to Begin

The Board of Education of Frederick County announced today that its spring semester adult educa-

tion classes will begin the week of January 26. Over 100 classes are offered at 33 locations, according to Dr. Robert G. Smith, Supervisor of Federal Programs and Adult Education. Detailed schedules will appear in all county newspapers the week of January 19. For further information, call 662-9200, extension 270.

It was noted that pre-registration is not required. Registration is accomplished by appearing at the first class meeting. Fees are also collected at the first meeting. For some classes a small materials fee may be charged.

Most class fees are set on the basis of \$1.00 per session. Thus a 12 session class cost \$12.00, a 10 session class \$10.00, etc. Smith commented that for most classes the fee worked out to 50¢ or less per hour. Adult Basic Education and High School Equivalence classes are provided free of charge.

Basic education, recreational, home art, parent education and general interest or self improvement classes are offered. General interest classes, for example, include classes in the Metric System held at Carroll Manor Elementary School and Seton Center. An introductory course in Broadcasting meets at Thomas Johnson High School. The Frederick Singers meet at West Frederick Junior High School, while a senior citizens' singing group meets at Catoctin View Apartments. Photography meets at Waverly Elementary. Furniture Restoration at Middletown

(Continued from Page 3)

Letter to the Editor

Dear Sir:

I write in the hope that all the people in Frederick County who can read this letter will stop and think about all the people in Frederick County who can't read this letter.

It's hard to believe but there are thousands in this area who can't read a help-wanted ad who can't write down a simple phone message.

The Board of Education offers free classes for adults who need to acquire basic school skills. The BOE offers classes but there aren't many takers.

Adults who can't read are embarrassed to admit it. (When asked to fill out a form, they say, "I forgot my glasses.") They are often depressed and they have a negative, hopeless feeling toward education. They can't be reached by written publicity.

Do you know someone who doesn't read well enough to "cope" with the tasks of modern living? Please be a volunteer recruiter for the BOE and encourage that person to join an adult class.

There are eighteen ABE/GED classes located in ABEK stands for

Adult Basic Education; GED is General Educational Development, the part of the program which leads to the Maryland High School Diploma by Examination. There is a special class for adult speakers of other languages.

Classes meet two nights each week from 7-9 p.m. They are informal, non-threatening. Each student is recognized and respected as an adult. He begins at his own level and works at his own pace.

A student registers simply by showing up for a scheduled class. The point is that not many ABE students do show up. Nudging is needed.

A new semester of classes starts soon. For further information that you can pass along to someone who can't read this letter, call 662-9200, Ext. 270, and ask for Ethel.

Sincerely,

Ann Marshall
Coordinator of Adult
Basic Education
Frederick County Board
of Education
Frederick, Md.

Lions Announce Winner

President of the Lions Club, Jack Humerick, has announced Frederick Meredith as winner of the Junior Elimination Chess Tournament, held in December at the Senior Citizens new quarters in the old Emmitsburg school.

Fred defeated all comers and seized the trophy by capturing his opponents queen. According to Fred, once the queen was captured, it was just a matter of time till checkmate. Taught to play chess by his Dad, Fred plans to continue improving his chess game.

Donations for the Lions Club childrens Christmas Party received from:

- Carters Drug Store
- Crosses on the Square
- Village Liquors
- Rodgers Liquors
- Sperrys Garage
- Farmers & Mechanics National Bank
- B.P. Service Station
- Freeman Shoes
- Mac's Barber Shop
- Myer's TV Service
- Keepers Esso
- Town of Emmitsburg
- Wilson Funeral Home
- The Palms Restaurant
- Welty's Market

Fred is a seventh grade student in Emmitsburg public school and the

son of Mr. and Mrs. William Meredith of Emmitsburg.



Bill Gillespie hands the Lions' trophy to Frederick Meredith.

Local Girl Scout Director Honored

To honor the volunteer Community Directors who administer Girl Scout activities in each of the local council's 87 communities, a luncheon was held at the Maryland Academy of Sciences in Baltimore's inner harbor on January 21. In addition to lunch, provided by the Executive Field Staff of Girl Scouts of Central Maryland, the celebration included recognition of Community Directors who have made outstanding contributions to the advancement of Girl Scouting. Honored from the Emmitsburg area was Mrs. John Chatlos.

A preview of two of the Academy's displays and the opportunity to see some of the new building before its official opening are other highlights of the occasion.

In their management positions, Community Directors are responsible

for the ongoing operations of between 12 and 35 Girl Scout troops within a certain geographic area. They appoint and supervise other members of the community's administrative staff, maintain relationships with other organizations within the community, serve as liaison between the community and the Girl Scout employed staff, and plan ahead to meet needs of girls and volunteers within their areas.

The 1st issue is delivered to every boxholder in Emmitsburg. The 2nd Issue is delivered to all former subscribers. The 3rd Issue is delivered only to newly paid subscribers. The Emmitsburg Chronicle will be on sale at all news stands in the stores.

Art Given To Mount

Dorothea Barrick-Folger's painting, entitled "The Rose," has been donated to Mount Saint Mary's College, Emmitsburg, by the artist's father, Claude Hamilton Barrick, according to Dr. John J. Dillon, president of the college.

"The Rose," a four by five foot painting painted in various layers of glazes, depicts a single pink rose in a circular bowl of water. It was one of the featured works in Ms. Barrick-Folger's recent art exhibit in the Academic Center on the College campus.

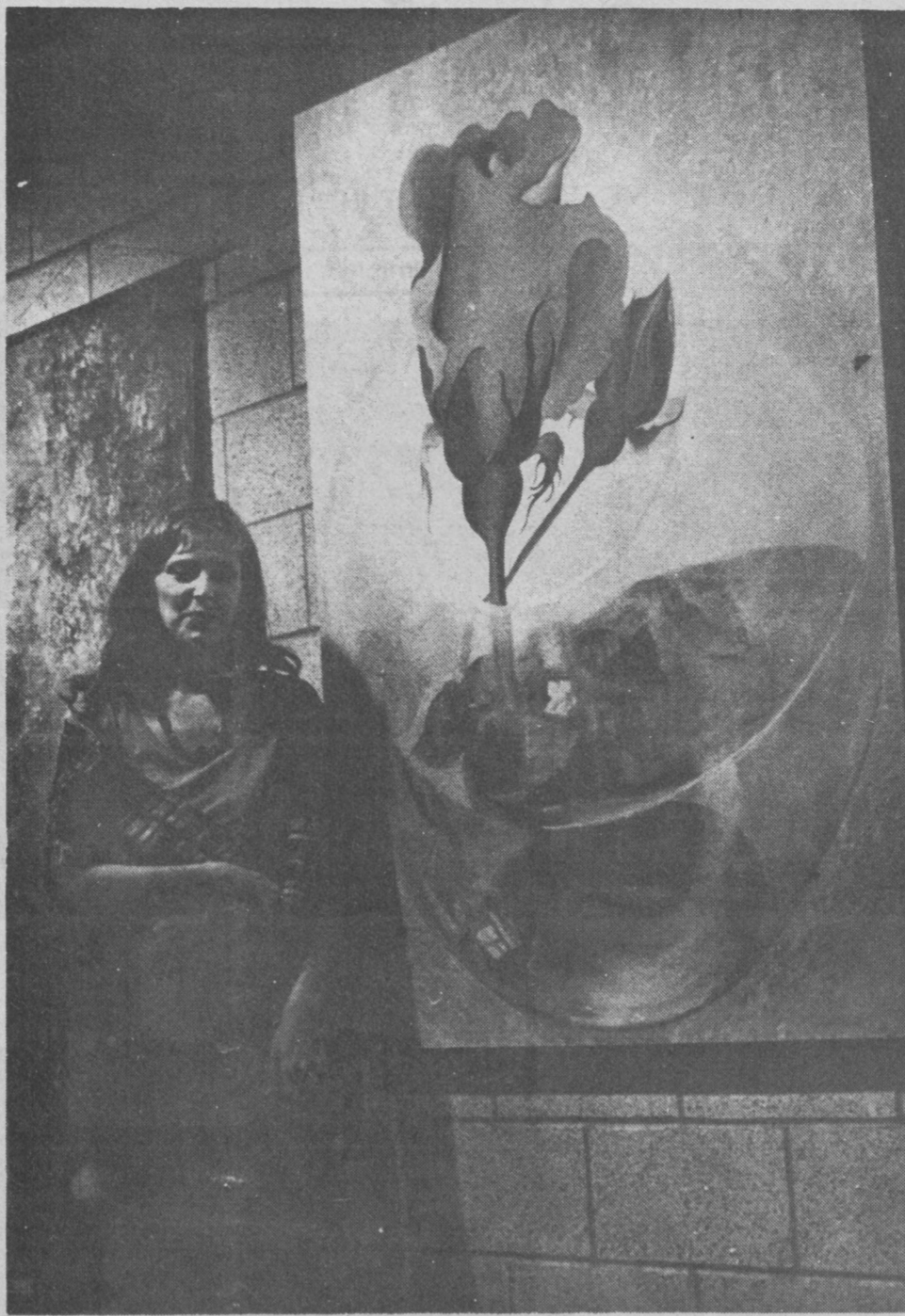
Instructor of art in the Fine Arts Department, Ms. Barrick-Folger is a native

of Woodsboro, Md. She majored in art at the Maryland Institute College of Art in Baltimore where she received her BFA in 1965 and her MFA from the Hoffberger School of Painting at the same institute in 1967. She has had her work shown in several exhibitions, and in 1965 she received an award from the Baltimore Museum of Art for one of her paintings.

"The Rose" will be hung in Mount Saint Mary's new Ann Carlisle Knott Academic Center. Mr. Barrick has requested that a plaque be placed on the picture reading "Dedicated in Loving Memory of Sara Baish Barrick by her

husband, Claude Hamilton Barrick, in Honor of our Daughter, Dorothea Barrick-Folger, the Artist." In a letter to the President of the College, Mr. Barrick expressed the wish that "...Dotty's lovely portrayal of the rose, her mother's favorite flower, continue to add beauty and inspiration for all who are privileged to visit your fine new facility. The Knott Academic Center."

Ms. Barrick-Folger is married to Walter D. Folger, who teaches photography at Hood College in Frederick. They live with their two sons, Marcus and Alexander, in Woodsboro, Md.



Dorothy Barrick-Folger is shown with her painting which is being donated to the Knott Academic Center photo by Jean Acheson

Police Report For Jan. 12, 1976

The following lists of arrests have either paid their fine or were tried in court January 12, 1976.

Exceeding Posted Speed Limit: David A. Bower, St. Pete, Fla., \$37; Mark E. Richardson, Thurmont, Md., \$38; Douglas K. Mcabee, Williamsport, Md., \$36; Anthony L. Gebhart, Mcsherrystown, Pa., \$25; Edgar D. Cooper, Carlisle, Pa., \$35; David McLaughlin, Huntingdon, Pa., \$35; Paul M. Scott, Gettysburg, Pa., \$35; Penny A. Stinson, New Oxford, Pa., \$30; Dennis P. Nohan, Piscataway, N.J., \$35; Maruin R. Spradlin, Germantown, Md., \$30.

Entering One-Way Street: James H. Miller, Taneytown, Md., \$15.

Stopping on Highway: Kenneth H. Weaver, Lit-

tlestown, Pa., \$15.
Speed Greater Than Reasonable: Charles T. Kellison, Biglerville, Pa., \$15; Kenneth R. Wagerman, Thurmont, Md., \$15.

Failure to Grant Right-of-way: Karen A. Smith, Hanover, Pa., \$15.

Traffic Control Device: Franklin D. Buckley, Taneytown, Md., \$10; Charles W. Lewis, Emmitsburg, Md., \$15; Jubb M. Mills, Baltimore, Md., \$15; Barry G. O'Brien, Abbottstown, Pa., \$15.

Operating Negligent Manner: Anthony L. Ott, Frederick, Md., \$30; Randy M. Aldridge, Greeley, Colorado, \$30; John V. Reed Jr., Thurmont, Md., \$30; John L. Misner, Jr., Emmitsburg, Md., \$30.

Thomas A. Wernes, Hadonfield, N.J., \$30; **David L. Deyanie,** Mt. Holly, Sggs., \$30.

Stop Sign: Mary L. Bollinger, Emmitsburg, Md., \$15.

Dep. Unsafe Material on the Road-Way: Jay P. Jones, Carlisle, Pa., \$30; Cindy L. Flickinger, Gettysburg, Pa., \$10.

No Passing Zones: Daniel W. Savary, Orrtanna, Pa., \$25; Stanley J. Snyder, Thomasville, Pa., \$25; Anthony D. Chase, Smithsburg, Md., \$25.

Summer Jobs Available

Applications are now being accepted from college students for summer jobs with the Maryland Department of Transportation. Students applying must be Maryland citizens and show proof of their intention to continue their education.

The positions, which range from stenographers to technical assistants, offer students an opportunity to earn both wages and valuable experience in their field of study.

Jobs are available throughout Maryland with those on the Eastern Shore and in the state's western

counties being the hardest to fill. While positions are available in such fields as accounting, chemistry, engineering, electronics, economics, journalism, urban and transportation planning, these are also the fields in which there is the most competition for the jobs. Students are encouraged to apply for jobs in their major area of study but are also urged to consider other fields as well.

Wages range from \$2.60 to \$3.80 per hour, depending on the position and the number of summers the individual employee has worked for the department. The deadline for applica-

tions is March 15, 1976, and all interested students are urged to see their school's placement officer or visit the nearest Maryland Department of Employment Security office for details and applications. Baltimore area students can also file applications at the Baltimore Urban League in the Mondawmin Concourse. The Maryland Department of Transportation is an Equal Employment Opportunity employer.

The department's Student Summer Employment Program is now in its fifth year and has offered 2,400 students summer work opportunities during that time.



Zip Column

ATTENTION Aliens! It is the responsibility of all aliens to report their address to the U.S. Immigration and Naturalization Service, during the month of January, each year. Self addressed cards are available at our business counter, for this purpose.

During the time our **Chronicle** was out of existence, our two local Rural Carriers received Safe Driver Awards. Charles R. Harner was awarded a 17 year pin and Albert W. McClellan 11 years. These pins are awarded through the National Safety Council.

The new rate, books of stamps, are now available at our office. Many of our customers had requested them, before receipt. They contain 23 stamps.

In the absence of recent news if there are any

customers who missed out on commemorative stamp issues, these are available at the Philatelic Sales Division, U.S. Postal Service, Washington, D.C. 20265. However, we do have on hand, Mint Sets, which contain 1 of each commemorative stamp issued during a calendar year.

An item to remember: A parcel worth sending, is worth wrapping securely. Sender and addressee's address are to be placed on one side of parcel only. Writing directly on the parcel, is an advantage over the use of labels, which may come loose. Tying of package securely, with strong cord, in both directions, pays dividends. And last but not least, addressee's zip code is mandatory on all parcels.

George E. Rosensteel
Postmaster

Pros Stage Exhibition

Professional tennis players Pauline Betz Addie and Allie Ritzberg will stage an exhibition match on the afternoon of Saturday, January 24, at the Tuscarora Racquet Club on Jefferson Pike. Proceeds will benefit the Lung Association of Mid-Maryland.

Ms. Addie is a four-time national tennis champion and in 1946 won the international title at Wimbledon.

After the featured match she and Mr. Ritzberg will take on local stars A. A. "Bud" Radcliffe and Lloyd Rice in doubles play.

Advance tickets are now being sold in Frederick at both Shipley's stores, M & M Liquors, Ye Olde Spirits Shoppe, Frederick Community College, and Tuscarora. All tickets are priced at \$2.

ELLC Meeting To Be Held

The Annual Meeting of the Emmitsburg Lifelong Learning Council will be held at 7:00 P.M. on Thursday, January 29th at Seton Center in Emmitsburg. All representatives of the cooperating organizations of the area are expected to be present. Five members

will be elected to the Board of Directors at this meeting and changes in the By-laws will be discussed and voted upon.

The Quarterly meeting of the Board of Directors will be held immediately following the Annual meeting.

Elias Elects Officers

A Sunday School assembly for Grades three through the adult classes at Elias Lutheran Church was held Sunday, January 18.

New officers were elected for the next two years. They include: Superintendent, Mr. Charles Long; Secretary, Mrs. Barr C.

Stoops: Treasurer, Mr. Richard Saylor; and Librarians, Miss Deborah Leatherman and Miss Tina Dinterman.

Plans for the next assembly to be held, February 1st, included the registration of participants in a Hobby Show. Also announced was the early registration for a Mar-Lu-Ridge, the Camp and Conference Center for Maryland Synod Lutherans. Printed reports for the Sunday School activities during 1975 were distributed. Mr. Richard Saylor, Treasurer, indicated that growth in all areas had been observed, particularly in the enrollment and financial offerings.

It was announced that a varied program for the 1976 assemblies was being planned with events that would include something for each age group within the Sunday School area.

Seton School Calendar

Mother Seton School P.T.A. Calendar of Events Friday, January 30th, 7:30 P.M.

A Night of Games Mother Seton School Auditorium. 2nd games and specials. Refreshments on sale. Babysitters available for little children. 50/50 chance drawing

Thursday, February 12th, 7:30 P.M.

P.T.A. Meeting Open House. Catholic Education Week. Students Bicentennial Exhibit. Speaker: Monsignor William C. Newman, Executive Secretary, Board of Education, Archdiocese of Baltimore. Mother Seton School Auditorium. Refreshments served.

Sunday, February 29th, 1 to 5 P.M.

Spaghetti Dinner with tossed salad, bread, coffee or cold drink. Mother Seton School Cafeteria. \$2.50 for adults. \$1.25 for children 6 to 12. Free under 6.

Saturday, March 20th
St. Patrick's Day Dance Mother Seton School Auditorium. \$6.00 a couple. B.Y.O.B. Set-ups and light refreshments on sale. Music by "That's So Nice"

NOTICE!

SNOW REMOVAL PLAN

Notification when plan is in effect will be heard on WTHU Radio Station.

Parking will be prohibited in the following areas until snow is removed:

Phase I — Square & First Two Blocks Of East & West Main Streets.

Phase II — Remaining Area of East & West Main Streets.

Vehicles not moved within 1 hour after plan is in effect will be towed at owner's expense.

The above plan has been adopted in order to expedite the removal of snow. Your cooperation will be greatly appreciated.

BURGESS & COMMISSIONERS

Accepted at MSM

The following students from the Emmitsburg area have been accepted to Mount Saint Mary's college for the 1976-77 school year: Judith K. Larse, RD. 2, Emmitsburg, Md.; Anne E. Morningstar, S. Seton Ave., Emmitsburg, Md.; and Curtis K. Ray, Emmitsburg, Md.

WILSON

Funeral Home

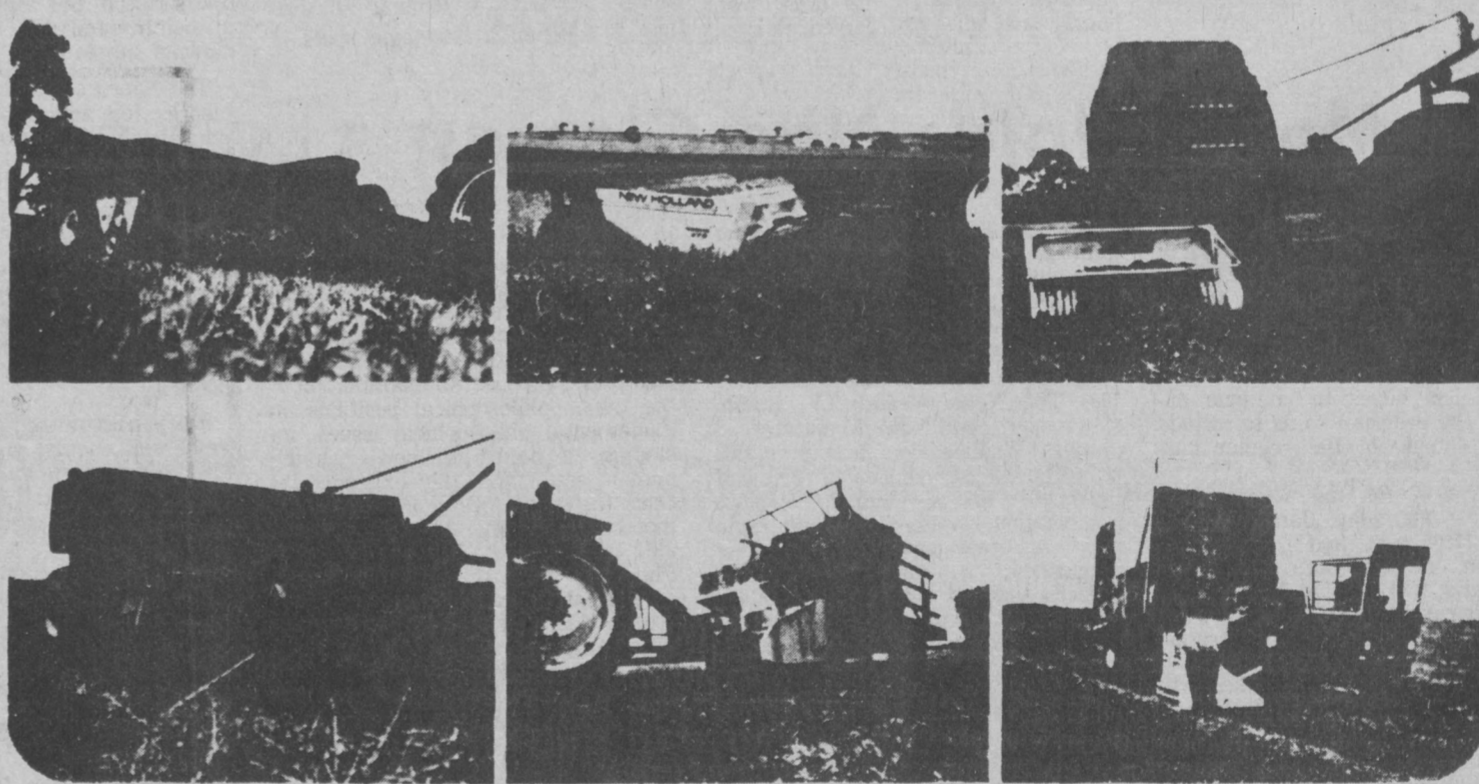
EMMITSBURG, MD.

Phones:

Emmitsburg 447-6244

Fairfield 642-8642

winter buyer's dividend:



IT PAYS TWO WAYS!

Get the new equipment you need and cash to boot during winter buyer's dividend. Buy any of the new machines listed below, between December 1, 1975 and February 28, 1976 and Sperry New Holland will send you a check in the amount listed. The earlier you buy, the more money you get. When you buy under this program, you protect yourself against possible price increases. And, you may qualify for the investment tax credit. Stop in or call us for more details.

MACHINE	DEC	JAN	FEB
Rakes, Mowers, Blowers	\$25	\$20	\$15
Model 707 Forage Harvester Crop-Choppers, Crop Carriers	\$55	\$45	\$35
14 x 18 Balers Model S717, 718 or 770 Forage Harvester Pull-Type Mower-Conditioners Model 850 Round Baler	\$100	\$80	\$60

Model 283 or 286 Baler	\$155	\$125	\$95
Model 890 Forage Harvester			
Pull-Type Bale Wagons			
Stack Retrievers			
Self-Propelled Mower-Conditioner			
Model 290 Baler	\$265	\$210	\$160
Self-Propelled Windrowers			
Self-Propelled Balers			
Model 1048 or 1049 Bale Wagons	\$395	\$315	\$235
Self-Propelled Forage Harvesters			
Model 1065 Bale Wagon	\$570	\$455	\$345

CERESVILLE MOTOR, INC.

Route 10, Box 84, Frederick, Md.

Phone 662-4197

Mt. Students Win Scholarships

Two students enrolled at Mount Saint Mary's College, Emmitsburg, Md., Leonard Knight and Robert Pastoor, have been awarded \$500 scholarship grants by the Chesapeake and Potomac Telephone Company of

Maryland, announced Dr. John J. Dillon, Jr., President of the College. Carl V. Weakley, Manager of the Frederick office of the C & P made the presentation to the two young men as a part of the Frederick Community

Relations program of C & P. A senior majoring in History, Lenny is a graduate of Mackin High School in Washington, D.C. During his college career, he has been highly active in Sock 'N Buskin, the college dramatic society, and is a manager for the basketball

team. He was selected, along with 28 other members of his class, for the 1976 edition of *Who's Who Among Students in American Universities and Colleges*. Lenny is the son of Mr. and Mrs. Gaither Wagstaff of 625 Edgewood St. N.E., Washington, D.C.

Bob, a native of Holland, is a naturalized citizen. In June of 1976 he will receive his B.S. degree in History Education. A graduate of Oaktown High School in Vienna, Va., he has worked with WMSM, the campus radio station. Sock 'N Buskin and has been active in the College's student government. He will also appear in the 1976 edition of *Who's Who Among Students*. He is the son of Mr. and Mrs. John Pastoor, Jr., 9411 Lee Highway, Fairfax, Va.



Left to right: Lenny Knight, Carl V. Weakley, Dr. John Dillon, and Bob Pastoor. photo by Jean Acheson

Vigilant Hose Co. Report

VIGILANT HOSE CO. EMMITSBURG, MD. ANNUAL STATISTICAL REPORT

Membership: Total 100; Fire Police, 10; Active, 100; Social, 50.

Number of Alarms: Calls, 65; Non-Fire Calls, 31; Mutual Aid Calls, 32; Average Men per Fire, 30.14; Service Calls, 56.

Approx. No. of man hours on calls: 4211 hrs., 18 min.

Approx. No. of miles traveled, all peices: 2007 1/4.

Injuries due to Fires: Fireman, 1; Others, 0.

Deaths due to Fires: Fireman, 0; Others, 0.

Times Used: Booster, 32; 2 1/2 in. Hose, 8; 3 in. Hose, 5; 1 1/2 in. Hose, 21; Ladders, 19.

Apparatus Statistics: Pumps, 4; Ambulances, 0; Tank Trucks, 1; Rescue, 1; Ladder Trucks, 0; Others, 0.

Types of Alarms: Private Dwellings (including Chimney), 25 First Call Runs, \$31,650.00 Loss. Farm Property (Barns, Sheds, Tractors), 5 First Call Runs, \$12,435.00 Loss. Fields, Brush, Woods, 7 First Call Runs. Motor Vehicles, 12 First Call Runs, \$3,550.00 Loss. Commercial Occupancy, 7 First Call Runs. Community Property (Schools, etc.), None.

Multiple Dwelling, None. Miscellaneous, 35 First Call Runs, 2525.00 Loss. False Alarms, None. Drills, 13 First Call Runs, \$50,160.00 Loss.

Causes of Fires: Matches and Smoking, 4. Faulty Heating Devices, 7.

Flammable Liquids, None. Electrical, 10. Children, None. Mechanical, 4. Miscellaneous, 29. Unknown, 6.

Arson (suspected or proved), 5.

Estimated Value of Prop. Involved, \$1,007,785.00.

Equipment Foreman and Assistants: Tom Topper - Foreman; Gregg Hollinger - Assistant Foreman; Mike Myers; Joe Lunny - In training; Denny Ebaugh - In training; Denny Lingg - In training; Tom White, Officer in Charge.

EUGENE E. MYERS CHIEF

Adult Ed. Classes to Begin

(Continued from Page 1)

High School and West Frederick Junior High, and Upholstery at Seton Center.

Parent education classes include Parent Enrichment Training at Thomas Johnson High School and Middletown Elementary. Seton Center offers Helping Your Child to Read, while Emmitsburg and East Frederick Elementary Schools offer Parent Volunteer Training in Reading. How to Help Children with Learning Disabilities is also offered at East Frederick. Two parent/child classes for handicapped children are held at Rock Creek Center, and a College Information for Parents class meets at Frederick High School.

Among art classes, Drawing and Painting is taught at Brunswick High School, Oil Painting at Catoctin and Middletown High Schools, and Pottery at Thomas Johnson. General Art is taught at the Frederick, Thurmont, and Walkersville Senior Citizen Centers, while Ceramics meets at the Urbana Elementary School, and at the Frederick and Thurmont Senior Citizens' Centers. The Thurmont Senior Citizens' Center also offers a class in Leather Craft.

Classes in Clothing Construction or Sewing are offered at Catoctin High School, Thomas Johnson High School and Middletown High School. Other home arts classes include Cake Decorating at Middletown High School, and Crocheting at Seton Center.

Physical Fitness offered at Brunswick High School, Emmitsburg Elementary, Linganore High School, and Middletown High School. Slimnastics meets at Green Valley Elementary, Middletown High School, Urbana Elementary, and Waverley Gardens. Additional classes in Swimming and Gymnastics are held at Middletown High School and Valley Elementary respectively. Classes in Beginning and Intermediate Belly Dancing meet at Waverley Elementary, while an Advanced Belly Dancing class is held at Rock Creek School.

Although a number of vocationally oriented classes are still filled from the first semester, a number of new classes are offered. Classes in Horticulture meet at Brunswick High School, Frederick High School, and Linganore High School. Auto Mechanics is offered at Catoctin High School and Welding meets at Frederick High School. Woodworking meets at Catoctin High, Emmitsburg High School, Thomas Johnson and West Frederick. Small Gas Engine Repair is offered at both Linganore High School and West Frederick Junior High. Commercial Photography, Graphic Arts, and Plumbing and Heating all meet at Frederick High; while Drafting and Blueprint Drawing and Machine Shop are held at Thomas Johnson High School. Farm Equipment Construction and Repair meets at Linganore High School.

Vocational Business Education classes are represented by Typing taught at St. Joseph's High School, Frederick High School, Thomas Johnson, and Middletown High School. Shorthand may be found at Brunswick, Thomas Johnson, or Middletown High Schools, while Key Punch meets at Brunswick and Thomas Johnson High Schools. In addition, a Business English Refresher class is taught at Seton Center.

The Board of Education also offers free classes for people who want to sharpen up their basic reading, spelling or math skills, or who want to study for the Maryland High School Diploma by Examination. These ABE/GED courses are taught at eighteen locations in Frederick City and County.

ABE/GED classes usually meet twice each week from 7-9 p.m. Instruction, books and supplies are all provided by the Board of Education without any cost to the student. Classes are informal and friendly. Each student works at his own pace. There is never any hassle about records or reasons for dropping out of high school.

There is no age limit. Any adult who is not attending day school may join a class.

For further information about ABE/GED classes, call 662-9200, extension 270 and ask for Ethel or, contact one of the recruiters in your area. Recruiters are: Sharon Barr, Jefferson & Middletown; Brenda Boone, Brunswick; Barbara Brown, Sagner Housing Project; Linda Myers, Emmitsburg; Audrey Nail, New Market; Phyllis Nowell, Thurmont; Millie Simons, Liberty; and Ethel Killingsworth, Waverley Garden Apartments.

Students Hold Tag Day

Young students at Mother Seton Elementary School showed their Christian concern for the value of life by helping to support the Right-to-Life student group heading for Washington, D.C. on January 22.

Through a school-wide "Tag Day" on Friday, January 16, more than \$50.00 was contributed. The funds will be used to defray some of the expenses for the chartered-bus carrying students to the Nation's

Capital for the March for Life on Thursday, January 22.

Sister Natalie, Principal of Mother Seton School praised the project: "The interest the students showed was marvelous. They were aware that their contribution, however small, would help to ensure the right-to-life for the unborn."

C of C Disbands

The Emmitsburg Chamber of Commerce disbanded due to the lack of interest shown in the past years.

A group of past members met to disburse the monies of the old organization. Those organizations who

will receive the monies are as follows: Girl Scouts, Seton Center, Brownies, Little League, Senior Baseball League, Boy Scouts, Cub Scouts and The Dynamics. Each organization will receive the same amount.

JC's Seek Members

All interested men between the ages of 18-35 are invited to join the Hamilton JC's.

The meeting will be held January 27 at 8 p.m. at the Knights of Columbus. Mem-

bers from the Hamilton JC's and past presidents will be at the meeting to give orientation of the JC's and elect officers.

Any questions contact Mike Myers at 447-2202 or Bob Seidel, Jr. at 447-2454.

Tax Payers Beware

Taxpayers who have their returns prepared by someone else should seek an honest, ethical tax preparer. Gerald G. Portney, IRS District Director for Maryland and the District of Columbia, said, "While most tax return preparers are reputable," Portney commented, "a small percentage of pre-

parers do a great disservice to the remainder of the profession by misrepresenting both themselves and the nature of the Federal tax return." Mr. Portney went on to say, "Taxpayers who ask someone else to prepare their returns should choose those preparers with the same care used to select a

lawyer, a doctor, or a dentist because they are entrusting to that person a major obligation for which they are still responsible, under penalty of perjury."

Taxpayers should be wary of trusting a preparer who hints that he or she has a special relationship with the IRS or has a special tie-in to IRS computers. Portney warned, "Likewise, according to

the District Director, taxpayers should avoid preparers who "guarantee" refunds, want a percentage of the refund, claim to "know all the angles," or present misleading claims on the number of taxpayer-prepared returns that err in the Government's favor.

Portney urged taxpayers to follow these four guidelines when dealing with a tax preparer: never

sign a blank return; never sign a return prepared in pencil; never permit the tax refund to be mailed directly to the preparer; and insist that the preparer sign the return.


Mr. Portney concluded, "Our concern is that the taxpayer have an awareness of ethical practices and that dishonest tax preparers get the message that unethical tax practice will not be tolerated by the IRS."

You're Really in Clover



When You Plant Southern States CLOVER SEED

- Adapted
 - Known origin
 - Disease-resistant
 - High purity and germination
 - Low weed content
- Use the Best — Plant Southern States Clover Seed



FOR YOUR NEEDS IN FEED, SEEDS, FERTILIZER AND CHEMICALS, FREEZERS AND REFRIGERATORS. ALL FARM SUPPLIES.

SOUTHERN STATES TANEYTOWN COOP.

TANEYTOWN, MARYLAND 21787
TELEPHONE 756-6711, 756-6603

Your Southern States Cooperative Agency

HOOD CALENDAR

<p>JANUARY</p> <p>24 ART EXHIBITION OPENING Invitational Photography Show (on display through Feb. 13) Hodson Gallery, Tatem Arts Center 7 - 9 p.m.</p> <p>27 AMERICA FILM SERIES The New Found Land Rosenstock Hall Auditorium 7 p.m.</p> <p>FEBRUARY</p> <p>3 AMERICA FILM SERIES Home Away From Home Rosenstock Hall Auditorium 7 p.m.</p> <p>10 AMERICA FILM SERIES Making A Revolution Rosenstock Hall Auditorium 7 p.m.</p> <p>11 CONSUMERS COMPLAINT SEMINAR Rosenstock Hall Auditorium 7:30 p.m.</p> <p>14 CHOIR CONCERT Hood and Villanova Choirs Coffman Chapel, 8 p.m.</p> <p>16 ART EXHIBITION OPENING Art Dept. Faculty Exhibition (on display through March 12) Hodson Gallery, Tatem Arts Center 7 - 9 p.m.</p> <p>17 AMERICA FILM SERIES</p>	<p>Inventing a Nation Rosenstock Hall Auditorium 7 p.m.</p> <p>24 AMERICA FILM SERIES Gone With the Wind Rosenstock Hall Auditorium 7 p.m.</p> <p>25 THE WARRENS "Hauntings and Witchcraft" Rosenstock Hall Auditorium 8 p.m.</p> <p>26-27-28 HOOD THEATRE PRODUCTION "Fieffer's People" Avalon Studio, Tatem Arts Center 8 p.m.</p>
--	--

WELCOME HOME

Emmitsburg Chronicle

Tapes and LP records, buy one at regular price get second one at half price. New and complete line of match box cars, model trucks, heavy equipment, airplanes and ships.

Myers' Radio & TV Shop

PHONE 447-2202 EMMITSBURG, MD.

ICE COLD

Beer-Wine-Liquors

10% DISCOUNT ON CASE LOTS OF WHISKEY

ROGER LIQUOR STORE

ANN G. ROGER, Prop.

SOUTH SETON AVE. PHONE 447-6262 EMMITSBURG, MD.

Store Hours: Monday Through Thursday, 8 A. M. to 10 P. M.
Friday & Saturday: 8 A. M. to 11 P. M.

A WORD ABOUT ADVERTISING

There was the businessman who got up in the morning after sleeping on an advertised mattress in an advertised bed, takes a shower in an advertised tub using an advertised soap, shaves with an advertised razor, brushes his teeth with an advertised toothpaste, drives to work in an advertised car, writes his work with an advertised pen, and then states to an advertising salesman, that it doesn't pay to advertise — but if his business fails to succeed, he advertises it for sale! Does it pay to advertise?!!?

EMMITSBURG AUTO SALES

RD #2 BOX 28 Rear
EMMITSBURG, MD. 21727

- 75 Ford F100 Pick-up Small V8 R H 3 Speed, 10,000 miles, like new
- 75 Grand Torino Sq. 9 pass. SW. PS. PB. A 4,000 miles
- 74 Torino HT. R. A. 12,000 miles.
- 74 L.T.D. Sq. SW. 10 Pass. R. PS. PB. A.
- 74 Vega GT. SW. 4 Speed, R.
- 74 Vega SW. Roof Rack, R. A.
- 73 Pontiac LeMans SW. R. A. PS. PB.
- 73 Plymouth Satellite SW. R. A. PS. PB.
- 72 Plymouth Fury III 2 DR. HT. Fully Equip.
- 71 Plymouth Satellite 2 DR. HT. R. PS. A.
- 71 Chev. Belair 4 DR. R. PS. PB. A.
- 70 Montego 4 DR. R. A.

MARSHAL SANDERS
301-447-2176

News Notes

Fireman Dance

The firemen of the Vigilant Hose Co. are holding a dance on February 28 at Mother Seton School. The dance will be from 9-11, and music will be supplied by the Country Ramblers. The charge is \$3.50 per person and this includes set-ups. This dance is to benefit the Truck Fund, so let's all mark February 28 on our calendars. The firemen do a great job and they deserve our support.

Senior Citizens

The Senior Citizens are back on their regular schedule - Monday through Friday from 9 a.m. until 3 p.m. Each Wednesday they plan for workday during the morning hours. Come in any day with other friends to enjoy most any game older people would like to participate in.

FOOD N' FRIENDS MENU

Monday
Sloppy Joe/roll, buttered corn, creamy cole slaw, orange cake, milk.

Tuesday
Baked macaroni/cheese, 1/2 deviled egg, lettuce/pineapple slice, buttered limas, bread-butter, chilled pear half, milk.

Wednesday
Meat loaf, bread-butter, buttered broccoli, sweet potatoes, sliced peaches, milk.

Thursday
Openfaced turkey sandwiches, green beans, whipped potatoes, applesauce, milk.

Friday
Chicken noodle soup, flying saucer, celery and carrot sticks, potato chips, jello/topping, milk.

Youth Week

Youth Week, a week set aside in Lutheran Churches throughout the Lutheran Churches in America for young people will be launched locally at Elias Lutheran Church with Youth Sunday being observed Sunday, January 25 at 10:30 A.M. Held the last week in January, young people involved in Lutheran congregations will be participating in a wide range of activities. Luther Leaguers, under the direction of Mr. and Mrs. Richard Smith, will

share in the liturgy at Elias Lutheran Church. They will participate as lay readers, ushers and provide special music. Immediately following the Service, they will depart for an afternoon bowling party at Rainbow Lanes in Taneytown. Cars will leave from the Church's parking lot at 12:30. Climaxing the Youth Week activities will be a Hobby Show, being planned for Sunday, February 1st. To be held from 9:00 A.M. until 10:15 A.M., the participants will include members of the congregation who wish to share their hobbies with others. These will include hobby demonstrations as well as displays. Concluding the February 1st activities, will be a Fellowship Hour to be hosted by the local young people at Elias Church.

Christmas Parties

On Saturday morning, Dec. 20, local children were treated to franks and hot cocoa by the local Lions Club. At 2 o'clock American Legion Post 121 and V.F.W. Post 6658 sponsored a Christmas party with Santa distributing the goodies. Santa also made an appearance the day before to local schools. The Lions Club, Legion, and V.F.W. wish to thank everyone who made this day "special" for our children.

Bowling News

THURSDAY NIGHT LADIES LEAGUE
Rainbow Lanes
Taneytown, Md.

Week Ending Jan. 15, 1976

Texaco Stars	Won	Lost
Stambaugh Exc. and Pav.	53	15
Al's Gals	44	24
Hess Inc.	42	26
Village Liquors	37	31
Shaft Nuts	32	36
Staley Body Shop	23	45
Gearhart's Electric	18	50

High Set - Ruth Wivell, 374.
High Game - Nancy Strine, 137.
High Team Set - Texaco Stars, 1613.

Citrus Sales

During the month of December the Catocin FFA Chapter held its annual Citrus Fruit Sales. Over 1,375 crates of tangelos, grapefruit, navel oranges and hamlin

oranges were ordered from the Blue Goose and Indian River Corporations of Florida. Chairman of the sales was Tommy Willard with committee members consisting of Lynn Fisher, Brenda Keilholtz, Patty Myers, David Harmon, Tom Bentz, David Hill and Naomi Weimer.

Profits from this event are used for the trip to the Pennsylvania Farm Show and the promotion of National FFA Week, February 22-28.

The members of the chapter would like to thank everyone for their support in this project.

Girl Scout News

BROWNIE TROOP #355

In October, 1975 a new Girl Scout troop was formed in Emmitsburg. Brownie Troop #355 has 14 members: Christina Antolin, Kathleen Carter, Charlene Jackson, Rhonda Keilholtz, Angie Ott, Meg and Ginny Preston, Laura Weaver, Angie Reckley, Diane Scrogum, Cynthia Sweeney, Sharon and Tammy Topper, Laurie Warthen. These girls are presently working on a Food Patch. While working on this Patch the girls will see how food affects them, learn how to plan a menu, and also how food cost affects every one.

This troop meets every Tuesday after school in the Emmitsburg Senior Citizen Center in the former Emmitsburg Elementary School. The leaders are Barbara McGraw and Mary Reckley.

BROWNIE TROOP #650

This troop of Brownie Girl Scouts registered 17 girls in the fall of 1975. After four weeks of meetings, they held an "Investiture Ceremony" when the girls received their pins and became official Brownies. A party followed the ceremony and was enjoyed by all.

Many of the girls attended a Brownie Song Workshop in Frederick and learned new songs to be taught to the rest of the troop. In October a Halloween costume party was held by the troop and prizes were awarded for the prettiest, funniest, and ugliest costumes.

Christmas was decorating the tree, exchanging gifts, and having a final party for the year 1975. During this present year the girls will be involved in the cookie sale in February to help earn money for the troop and Council activities. Also in February the girls will attend Frederick Community College for Brownie College Day where courses will be given in such things as Spanish, dramatics, dancing, tennis, etc. It should be fun.

The Central Maryland Girl Scout Council's big Bicentennial project, "SHE '76," will be held in May and the girls will be busy planning their activities for this event. Camping will also be a part of the program for the spring. "Many Faces of Food" will be introduced during which the girls will be planning meals and making charts, working with their families and learning new things about food, hopefully earning some patches along the way. This year will be interesting and fun. This troop meets every Wednesday in the Trinity Methodist Church Fellowship Room after school with Mrs. William Greco as the leader.

COMMUNITY 60 MEETS

Leaders and troop cookie chairmen representing every troop in Community 60 met Monday night, January 12 in the Thurmont Scout Building. Community 60 includes all troops in Lewistown, Thurmont and Emmitsburg. Mrs. Sheila Chatlos, Community Director, presided at the meeting. Mrs. Louise Moss, Community Cookie Manager, explained the Troop Cookie Chairman's job during the coming year and distributed the work packets. Mrs. Margy Myers gave a report on the QSP project, or subscription drive, which was held during November with each troop participating and reporting on time. Mrs. Edith Shriver, Community Bicentennial Coordinator, brought the members up to date on the plans for the Bicentennial project SHE '76 to be held on May 1 and 2 at Timonium Fairgrounds. Opportunities for training and troop activities were presented. The next meeting will be held at In-carnacion Church Fellowship Hall in Emmitsburg on February 16.

Besides those mentioned above, the following were present: Becky Oyhus, Jean Rosensteel, Mary Greco, Gail Brenton, Joanne Trapano, Betsy Baker, Joyce Byers, Barbara McGraw, Mary Reckley, Shirley Lantz, Eta Leveronne, Virginia Preston, Dorothy Seiss, Ann Marie Green, Ottolée Hewitt, Vicki Smith, Beth Ruppel, and Harriet Glass.

Citizens Committee Meets

The Citizens Committee meeting is scheduled for Tuesday evening, January 27 at 7:30 p.m. at the Town Office. The Citizens Committee hopes all concerned adults attend.

BIRTHS

Mr. and Mrs. Wallace B. Shank announce the birth of a 7 lb. 12 oz. boy, January 3 in Annie Warner Hospital.

What Causes Poor Health?

Your emotions, attitudes, and behavior may be among the major determinants of your health according to an increasing number of experts from a variety of disciplines. The premise that America's major health problems, namely heart disease, cancer, stroke, suicide, accidents, and homicide are primarily caused by environmental factors and individual behavior and, therefore, cannot be solved solely by medical health services, also has been endorsed by the U.S. Department of Health, Education, and Welfare.

Recently, the American Psychological Association's Task Force on Health Research issued a report on the current status of — and the dire need for — research and consumer education on health-related behaviors. The report terms health "one of the most crucial problems facing our nation," but notes that our methods of "providing and financing health services are nearly exhausted." The health-delivery system has not kept pace with the evolution over the years in fundamental preventive concepts relating to health and illness.

The Task Force report reviews the research on the relationships between social-class poverty and illness, hostility and hypertension, different personality types and coronaries, and stress or depression and disease. Interest in the relationship between behavior and cancer is dramatically increasing. A number of psychologists have discovered a "consistent description of the cancer patient as a rigid, authoritarian, inner-directed and religious person, with ample conflict insurance purposes, to substantiate causes of accidents or other forms of disaster."

January	Snow-11"	3.78
February	12"	3.30
March	4"	4.48
April		3.36
May		4.40
June		7.78
July		3.88
August		3.59
September		11.63
October		4.02
November		2.94
December	1"	2.83
Totals	28"	59.28"

The highest temperature recorded this past summer was 94° on August 2, 3 and 26th, 1975. The first killing frost in 1975 was on October 31st. We can expect the first killing frost in September or October. In 1975 it was unusually late. The last killing frost in the Spring was on April 23rd when 31° was registered. Rainfall during the '70's has been much higher than in the 1960's which is why our water supplies have been adequate.

Those who keep records of rainfall and temperature in this area may differ with the official records — but this is natural because even within 1/4 of a mile there may be temperature and rainfall variations. These official records can be used in court, for in-

ing our nation," but notes that our methods of "providing and financing health services are nearly exhausted." The health-delivery system has not kept pace with the evolution over the years in fundamental preventive concepts relating to health and illness.

The Task Force report reviews the research on the relationships between social-class poverty and illness, hostility and hypertension, different personality types and coronaries, and stress or depression and disease. Interest in the relationship between behavior and cancer is dramatically increasing. A number of psychologists have discovered a "consistent description of the cancer patient as a rigid, authoritarian, inner-directed and religious person, with ample conflict

Weather Report

Weather records for the Emmitsburg area have been kept continuously at the present location since 1956, before that records were kept sporadically by the priests at Mt. Saint Mary's back into the 1800's. These records are made in cooperation with the National Weather Service. Official instruments are used. The maximum, minimum, and observation temperatures and the amount of rainfall, snow, or ice are measured and recorded. Two copies of these records are forwarded to the National Weather Service each month, and to the Baltimore office at Baltimore-Washington Airport each week — One copy is kept at the local station. The normal yearly precipitation for this area is 40 inches. The totals for this year are:

January	Snow-11"	3.78
February	12"	3.30
March	4"	4.48
April		3.36
May		4.40
June		7.78
July		3.88
August		3.59
September		11.63
October		4.02
November		2.94
December	1"	2.83
Totals	28"	59.28"

The highest temperature recorded this past summer was 94° on August 2, 3 and 26th, 1975. The first killing frost in 1975 was on October 31st. We can expect the first killing frost in September or October. In 1975 it was unusually late. The last killing frost in the Spring was on April 23rd when 31° was registered. Rainfall during the '70's has been much higher than in the 1960's which is why our water supplies have been adequate.

Those who keep records of rainfall and temperature in this area may differ with the official records — but this is natural because even within 1/4 of a mile there may be temperature and rainfall variations. These official records can be used in court, for in-

ing our nation," but notes that our methods of "providing and financing health services are nearly exhausted." The health-delivery system has not kept pace with the evolution over the years in fundamental preventive concepts relating to health and illness.

The Task Force report reviews the research on the relationships between social-class poverty and illness, hostility and hypertension, different personality types and coronaries, and stress or depression and disease. Interest in the relationship between behavior and cancer is dramatically increasing. A number of psychologists have discovered a "consistent description of the cancer patient as a rigid, authoritarian, inner-directed and religious person, with ample conflict

storm came through and in four days we had 7.27 inches of rain. The Monocacy at Bridgeport was over the bridge. Tom's Creek at Four Points was over the road. Flat Run was high. Schools were closed early and on the 26th of September schools were closed due to flooding. The Cooperative weather observer gets no pay for this job, but it is interesting and very valuable to the nation because the trend of rainfall and temperature cycles can be traced and used by industry, agriculture, and

Colorfest Corporation Plans Jan. 26 Meet

Catocin Colorfest, Inc., will hold a meeting January 26, at 7:30 in the Thurmont Town Office. Your attendance is vital to the future direction,

each hospital inpatient admission which was increased by the government from \$92 to \$104; the additional charge for the 61st through 90th day of each inpatient hospital stay, increased from \$23 to \$26 per day; the additional charge for each of the 60 "lifetime reserve" hospital days, increased from \$46 to \$52 per day; and the additional charge for the 21st through 100th day of each skilled nursing facility stay, increased from \$11.50 to \$13 per day.

The open enrollment period applies to those senior citizens who are not now Blue Cross or Blue Shield members; current members automatically

the initial deductible for

around sexual and hostile impulses, using excessive repression of affect, and with poor emotional outlet." There are also data that "cancer patients with fast-developing diseases are more defensive and over-controlled than patients with slowly developing diseases."

Members of the Task Force found that "the amount and impact of research on the relationships between psychological factors and physical health are anemic," and indicated their intention to stimulate more interest in research on health behavior within the psychological community. The report concluded that "there is probably no specialty field within psychology which cannot contribute to the discovery of behavioral variables crucial to a full understanding of susceptibility to physical illness, adaptation

heating and cooling companies — flood control water supply — irrigation. There are thousands of Cooperative observers throughout the United States, some of whom have kept records for 50 years or more. Anyone who needs information that can be furnished by the observer is free to call her and she will try to get the information for them. Newspapers and radio stations have called for information. Please do not call after 8:00 p.m. Early morning is fine! Telephone no. 447-2635. Weekly weather summaries will be supplied to the Emmitsburg Chronicle.

Colorfest Corporation Plans Jan. 26 Meet

Catocin Colorfest, Inc., will hold a meeting January 26, at 7:30 in the Thurmont Town Office. Your attendance is vital to the future direction,

each hospital inpatient admission which was increased by the government from \$92 to \$104; the additional charge for the 61st through 90th day of each inpatient hospital stay, increased from \$23 to \$26 per day; the additional charge for each of the 60 "lifetime reserve" hospital days, increased from \$46 to \$52 per day; and the additional charge for the 21st through 100th day of each skilled nursing facility stay, increased from \$11.50 to \$13 per day.

The open enrollment period applies to those senior citizens who are not now Blue Cross or Blue Shield members; current members automatically

the initial deductible for


Congratulations and Best Wishes to the Emmitsburg Chronicle FROM EMMITSBURG PHARMACY

Paul M. Carter, Pharmacist
Phone 447-6226
EMMITSBURG, MARYLAND

THE TOTAL LOOK

Formerly Village Coiffures
Emmitsburg, Maryland 21727
Ladies' and Men's Styling
Walk In or By Appointment — Phone 447-2541

USED CARS AT ALWAYS GOOD VALUES



1974 Mustang II; 2+2; 2 Dr. H.T.: 4 Speed; R&H
1974 Maverick; 2-Dr. Sedan, 6 cyc.; Auto; R&H
1974 Dodge Dart; 2-Dr. H.T.: 6 cyc.; Low Mil.
1972 Ford LTD; 2-Dr. H.T.; Fully equipped.
1972 Torino Sta. Wagon; 6 cyc.; R&H
1971 Ford LTD; 2-Dr. H.T.; Fully Equipped
1970 Ford; 4-Dr. Sedan; R&H; Auto; P.S.
1972 Chevrolet Vega Hatchback; 4 cyc. R&H, S.S.
1969 Ford LTD; 4-Dr. H.T.: fully equipped

Sperry's Ford Sales, Inc

PHONE 447-6171 EMMITSBURG, MD.

LOOKING FOR A GOOD USED CAR? SEE OUR GUARANTEED USED CARS

'75 AMERICAN MOTORS MATADOR SPORT COUPE V 8 automatic transmission, power steering, air condition, vinyl top, like new.
'75 AMERICAN MOTORS MATADOR 4 DR. SEDAN V 8, automatic transmission, power steering, air condition, vinyl top, like new.
'74 Ford Gran Torino Station wagon V 8, automatic transmission, power steering, air conditioning, new radial tires.
'74 Ford Gran Torino 4 dr. sedan V 8 automatic transmission, power steering, air conditioning, new tires.
'74 Ford Torino sport couple V 8 automatic transmission, power steering, air conditioning, new tires.

COMPLETE LINE ALLCAR AUTO PARTS BATTERIES & TIRES

SANDERS GARAGE

— AUTO SALES & SERVICE —
PHONE 447-6525 EMMITSBURG, MARYLAND

ALBERT F. WIVELL & SONS

CONTRACTOR

Custom Homes Swimming Pools
Remodeling Sales and Service
Excavation Call 447-2218


COUNTRY PORK BUTCHERING

sponsored by
Rocky Ridge Volunteer Fire Co.
Saturday, January 31, 1976
at Rocky Ridge Fire Hall

Meat will be on sale after 6 A.M. Advance orders will be taken. Call 271-2616 or 271-7395. Sausage and pancake breakfast starts at 6 A.M. Make checks payable to Mr. John Kaas, Treasurer.

ENJOY A CLEANER, SAFER HOME, MORE HEAT FROM LESS FUEL!

Chimney Sweep
Instant Soot Destroyer



Instant Soot Destroyer quickly removes soot and carbon deposits that waste fuel and cause corrosion and dangerous soot fires. Simply spray on soot-coated surfaces. Safe. Easy to use. For oil, coal, coke, and wood-burning furnaces, boilers, heaters, and fireplaces.

ZERFING'S

HARDWARE, INC.

Geltsburg Littlestown

Emmitsburg Chronicle

Established 1879
Successor to the Emmitsburg Banner, Established 1840
EMMITSBURG, FREDERICK COUNTY, MARYLAND

Published weekly on Thursday by EMMITSBURG NEWSPAPER, INC., 19 East Main St., Emmitsburg, Md. 21727.
Telephone 301-447-6344

EMMITSBURG NEWSPAPER, INC.
PUBLISHER
BECKY BROWN
EDITOR

Copy for Advertisements must be received in this Office not later than Monday noon to insure publication in the current week's edition. Advertising rates furnished upon request. Subscription rate, \$6 per year in advance. All Communications and Checks intended for this Paper should be addressed and made payable to EMMITSBURG NEWSPAPER, INC., Emmitsburg, Maryland 21727. Entered as second class mail at Emmitsburg Post Office, Emmitsburg, Md. Permit Pending.



To Place Your Ad Call 447-6344

Autos-Trucks

THE BEST USED cars are found where the best used cars are sold. William (Bill) Sentz Fairfield Rd. RD3 Gettysburg, Pa. Phone 717-642-5603

Services

E.M. BLANK Roof Work & Spouting Slate Roof Repair Roof Painting Route #1 Walkersville, Md. Call 898-9818

AWNINGS

CAR PORTS PATIO COVERS PORCH ENCLOSURES FIBERGLASS AWNING CO. 127 York St. Gettysburg, Pa. 334-4612

NOTICE - If you really want your child to learn to play the piano, give her good tools to start with. Otherwise, your ambition may be defeated. We have good pianos, all types, new and used. Our used pianos are O.K. Certified and guaranteed bargains.

Menchey Music Service 1100 Carlisle St., Clearview Shopping Center Hanover

JOHN G. HUMERICK, Broker, Real Estate Emmitsburg, Md. 447-2103

LIBRARY HOURS Monday, Tuesday, Wednesday - 2:30 - 5 - 6:30 - 9 Thursday, 10-Noon - 2:30-5 Friday, 2-5 Saturday, 9 a.m.-12 Noon

BUSINESS SERVICES

PATRONIZE our advertisers. These firms are reliable and have proven through the years that they handle only quality products and offer skilled professional service and advice to their patrons.

Wanted to Rent

ONE OR TWO bedroom house. Call between 5 & 6 p.m., 447-6532.

FOR RENT 5 bedroom house. Call 447-2560 after 6 PM. Available Feb. 1.

1 & 2 bedroom Apts. for rent. Unfurnished. Includes refrigerator, stove, dishwasher, wall to wall carpeting throughout, air conditioning. \$170 & \$180. Phone 447-6592.

Coffman Jewelers 28 Baltimore St. Gettysburg, Pa. OMEGA WATCHES (ORANGE BLOSSOM DIAMOND RINGS)

YOUR PEACE OF MIND DEALER RANDY'S Pre-Owned Cars & Trucks

Fairfield, Pa. Phone 642-5828

HERE'S CLYDE'S HAIR STYLISTS Specializing In Men's & Women's Hair Styling 12 E. Main St., Thurmont Phone 271-4479

FOOD SHORTAGE

Increased demand is outstripped world food production, says a Stanford Research Institute study.

Help Wanted

4 LADIES needed immediately in this area. Full or Part-time. No investment required. Will train. Phone 473-5889 or 662-6014

For Rent

4 ROOMS AND full bath, 3 rooms carpeted. Apply in person to Miller's service station, Waynesboro Road.

For Sale

Hanover Maternity Shop Complete Line Of MATERNITY WEAR Children's Wear to Size 6X. Danksin Leotards, Tights & Trunks - Shower Gifts Selva Dance Footwear 41 Frederick St., Hanover, Pa.

CUSTOM SLAUGHTERING & Processing of beef. Cut and wrapped for the freezer to your specifications.

NORMAN SHRIVER, JR. Emmitsburg Phone 447-2255 We sell beef by half or quarters.

GROW YOUR OWN fruit! Free copy 48-page Planting Guide Catalog in color - offered by Virginia's largest growers of fruit trees, nut trees, berry plants, nut trees, fruit plants, grape vines, landscaping plant material. WAYNESBORO NURSERIES Waynesboro, Va. 22980

Autos-Trucks

ZENTZ AUTO SALES Where the nice ones are! Serving You Since 1943 Carlisle St., Gettysburg, Pa. Open 9-9 Daily

NOTICE

I am not responsible for any bills other than my own. Rosalie M. Eyler Rt. Box 173 Thurmont, Md. 21788

ANTENNA SPECIALISTS for Commercial & Home Installations Repairs Estimates Towers

Thurmont Radio & TV 206 N. Church St. 271-2158

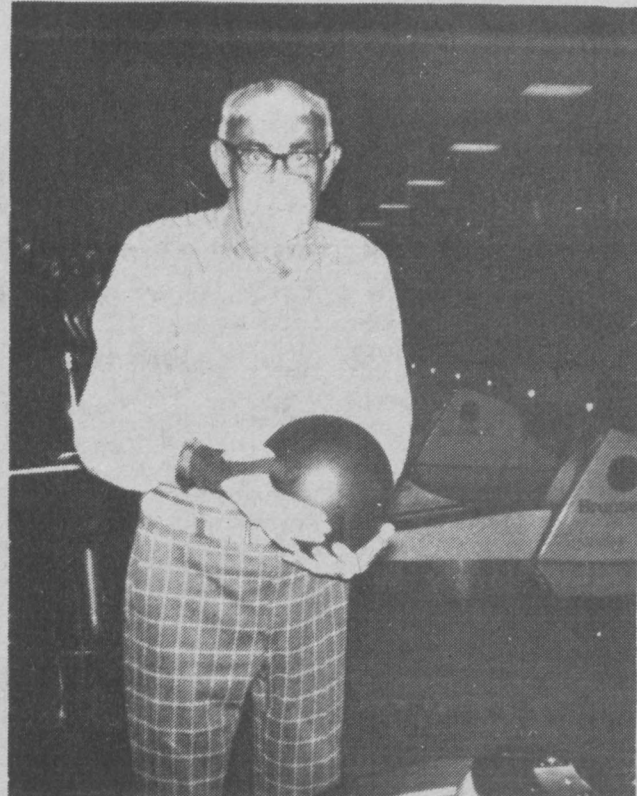
RONALD J. SHORB Ceramic Tile Contractor Baths-Kitchens-Flagstone Wall-to-Wall Carpet Armstrong Floor Covering Free Estimates Phone 271-7252 Thurmont, Md.

CONGRATULATIONS

BEST WISHES FOR SUCCESS TO THE Emmitsburg Chronicle REAVES ELECTRIC COMPANY 402 WEST MAIN STREET EMMITSBURG, MD. 301-447-2497

Time, Nor Age Limit Creative Minds

"Rocking chair retirees are of the past - replaced by inventive older citizens, busy improving our homes and environs with hundreds of new inventions," reports Stephen Traube, Vice President of Lawrence Peska Associates, Inc., New York-based interna-



Adam Rasmus wears his Bowler's Thumb Protector Invention

tional invention development firm. "Of the thousands of new inventions we develop each year, nearly one-third spring from the creative minds of older inventors. Our retirees utilize past experience, knowledge, and wisdom to create practical, saleable items for the marketplace. More often than not, it is men and women over 65 who create the inventions that enhance and improve our environment and lifestyle," noted Mr. Traube. "Our company helps to bring recognition and reward to this special group of innovators through an intensive program of safeguarding, marketing, promotion, and licensing of inventions to industry," said Mr. Traube.

Several patented and pending inventions from senior citizens, now being marketed by Lawrence Peska Associates, include:

A patented AIR PURIFYING DEVICE invented by Robert Pyzel of New York City, for use in smoke or fire emergencies in any enclosed area. This pocket-sized, disposable inhalant provides an immediate safeguard in offices, homes, subways or tunnels, should smoke, fire, or gas emission emergencies arise. The AIR PURIFYING DEVICE has a unique valve mechanism which provides the user unlabored free breathing for thirty minutes or more. Mr. Pyzel's years of experience as a chemical engineer and industrial design consultant resulted in his receiving patents for a large number of practical saleable inventions. The

Licensing Department of Lawrence Peska Associates in New York City, is currently negotiating on Mr. Pyzel's behalf to license or sell this unique lifesaving invention for future use by concerned citizens everywhere.

Loretta Radel of Mount Vernon, New York received a patent pending status for her extremely useful invention - a DISPOSABLE DUSTPAN. Deciding that conventional dustpans allow dirt, dust and bacteria to accumulate during storage and are unsightly as well, Mrs. Radel invented an inexpensive dustpan made of paper, which allows a person to make a fresh start on a clean surface for dusting, each and every time. This hygienic, practical invention is now being considered for manufacture and distribution by a number of companies in the U.S. and Canada.

Adam Rasmus of Lake Worth, Florida, is the inventor of a THUMB BOWLER'S THUMB PROTECTOR that fits securely over the thumb and around the wrist of either hand. Mr. Rasmus, a life-long bowling enthusiast, knows that sore and swollen thumbs often affect a bowler's individual score and team standing. The THUMB PROTECTOR will not buckle, gather or bend at the wrist. It assures a uniform grip on the

ball and permanently cures bowlers' sore thumb blues."

There is hardly a retired person today who is not concerned with rising prices and soaring taxes. A. Louis Kalas of Boca Raton, Florida, wanted to eliminate shopping errors and determine precisely the amount of monies spent. He invented a new and improved SALES TAX CALCULATOR, featuring two revolving discs that clearly indicate the amount of sales tax related to the total sale of any item, up to \$1,000. Sales and tax amounts are printed in easy-to-read black and red, with amounts visible in window apertures, and pointers on both discs to aid in proper alignment of figures. The SALES TAX CALCULATOR has a wide capability range and fits perfectly in pocket or purse for daily shopping trips. Via licensing or sales arrangements, Lawrence Peska Associates hopes to have Mr. Kalas' SALES TAX CALCULATOR invention available to the public

in the near future.

Lawrence Peska Associates offers inventors professional guidance and expertise in readying hundreds of different types of inventions for the mass market. To be saleable, an invention need not be totally revolutionary or new, but rather must appeal to a wide segment of the population. Product categories of special interest to industry are:

- New games for both adults and children
- Car improvements and safety devices
- Hand tool improvements and do-it-yourself items
- Recreational and hobby ideas
- Protection devices for home, car, and individuals
- Mr. Traube noted, "There is no doubt that today's retirees are utilizing their leisure time creatively, inventing new products for the marketplace. What better way of passing on a legacy for the next generation, than creating inventions that enhance a person's lifestyle and well-being."



Robert Pyzel shows his Air Purifying Device

Farm Report Announced

Counties are in the process of developing practices to be used in correcting conservation problems on Maryland farms in 1976. County development groups are authorized to select any practice which will provide enduring soil and water conservation measures on farmland and establish cost-share rates of 50 to 75% of the cost to perform the practice.

Counties will determine priorities for cost sharing to obtain the maximum enduring solution to the problems and approve those practices which are consistent with the County Conservation Plan. Additional information on the 1976 ACP Program will be forthcoming from individual county offices.

Several grain producers in Maryland have been taking advantage of the Commodity Loan Programs which provide for using the crop as collateral and receiving a loan in the form

of cash to meet financial obligations. The producer pays 7.5% interest on the loan and can pay off the loan plus interest at any time up to the maturity date of the loan.

As of this date there are 26 farm stored corn loans totaling 408,703 bushels amounting to \$523,140. In addition, there is one warehouse loan of 4,000 bushels amounting to \$5,100.

There are six farmed stored wheat loans of 44,497

bushels amounting to \$63,185. Anyone interested in additional information on the

Commodity Loan Programs should contact the local ASCS office.

Cancellation

throughout Frederick County. This cancellation will mean that the observance originally scheduled for Incarnation United Church of Christ in Emmitsburg, Md., on Saturday evening, January 24th, will also be canceled.

John C. Chatlos, Pastor of Incarnation United Church of Christ Emmitsburg, Md.

Come To Us For Fast Service On All Your Printing Needs Chronicle Press Emmitsburg, Md. Phone 447-2333 'If we didn't print it, you probably paid too much.'

Appeals Board Meets

A Zoning Appeals meeting was held January 19, on the interpretation of Article 5 between William Garde and the Appeals Board of the Planning and Zoning Commission.

According to the Board, the ordinance states 5000 sq. ft. to each living unit. Mr. Garde interprets it to read a three family unit per 5000 sq. ft.

The appeals commission has decided to table the appeal till further review and consultation with their lawyer, and they will inform Mr. Garde within 30 days to the decision.

Their interpretation effects not only the town, but will also affect other towns with the same problem.

Sodality To Meet

The Sodality of the Blessed Virgin of St. Joseph's Church, Emmitsburg, Md., will meet on Monday, January 26 at 8 p.m. in the Parish meeting room.

All members are urged to attend this meeting, as there are several important items to be discussed.

CODORI MEMORIALS

Rock of Ages Monuments, Markers Mausoleums Cemetery Lettering & Cleaning 400 W. Middle St., Gettysburg Phone 717-334-1413

PHOTO SPECIAL 33 1/3% OFF DEVELOPING AND PRINTING ALL KODACHROME FILM CROUSE'S "ON THE SQUARE" EMMITSBURG, MD. PHONE 447-2211

CECIL STULTZ

ROOFING - SIDING CONCRETE WORK - CABINET BUILDER FREE ESTIMATES - By Contract Or By Hour Phone 717-642-5315 R2, Fairfield, Pa. 17320

IMPORTANT NOTICE

According To The Ordinance Of The Town Of Emmitsburg, All Snow Must Be Removed From Sidewalks 12 Hours After The Snow Stops. Penalties Will Be Assessed Against All Property Owners Who Fail To Comply With This Ordinance.

Burgess and Commissioners

IF Day is coming

Cozy Bud 'n' Vase Shoppe

Thurmont, Md. 271-2445

JOHN W. "BILL" STRICKHOUSER AGENT ROAD NO. 1 EMMITSBURG, MARYLAND 21727 PHONE: 301-447-2266

CONGRATULATIONS AND BEST WISHES TO THE NEW OWNERS OF THE Emmitsburg Chronicle FROM THE EMMITT HOUSE MR. & MRS. EDWARD LEONARCZYCH

A GREAT DAY FOR EMMITSBURG WELCOME HOME Emmitsburg Chronicle FROM BURGESS AND COMMISSIONERS

MARSHALL V. SHARRER, JR.

HOME IMPROVEMENT AND BUILDING CONTRACTOR RD. 2 BOX 66C EMMITSBURG, MARYLAND Phone 301-447-6285

BOWLER'S REAL ESTATE

FOR SALE Open Sunday 1-4

1 2/3 acres improved with cape cod in excellent cond., cab. kitchen, living room, fam. room, or din. room, 3 bdrm., basement apart., open stairway to second floor (3 add. rooms not comp.). There is a separate 2 car garage plus 2 other out bldgs. Owner will finance, qual. buyer. \$41,000.00 1 Mile East of Route 97, on East side of Toms Creek Rd.

Rebecca Stover Salesperson

Representing Emmert R. Bowles Realtor

We multiple list

473-5137

'76 Contest Held by BICEP

Students in grades 9-12 throughout the 13 original states and the District of Columbia will have a chance to discover little known facts about their American heritage by entering a contest sponsored by BICEP '76 — the Philadelphia-based Bicentennial Committee for Educational Projects.

The "Blacks and the Revolution" program challenges students to uncover information about the role of blacks in Revolutionary history. Those eligible are asked to express their findings in art, music, writing and crafts.

Deadline for entries is March 1, 1976. Contest information in Maryland is available from Dr. James A. Addy, Maryland State Department of Education, Box 8717, Baltimore, Maryland 21240, or phone 796-8300. Contest guidelines have also been mailed to schools across the state.

Forty winners from each state will be invited to Philadelphia for a three-day, all-expense paid pageant in May, 1976. Festivities will include tours of historical sites, parades, championship tennis matches, international cricket matches, musical events and the general excitement of participating in Philadelphia's Bicentennial celebration.

Scholarships Offered

High school graduates with outstanding academic records will be awarded scholarships to attend Shepherd College during the summer of 1976 according to Dr. Billy Ray Dunn, executive vice president of the Shepherd College Foundation.

The foundation recently voted to provide scholarships covering tuition and fees for one summer session to two graduating scholars from each of the high schools in the contiguous geographic area served by the college. First consideration will be given to the Valedictorian, with other academically gifted seniors as alternates.

Counselors in each high school will be asked to notify Shepherd College officials of interested seniors to aid the selection procedure.

New Clinic Opens

The Arthritis Foundation, a United Way agency, operates a free screening and evaluation clinic in Frederick.

The clinic is conducted in cooperation with the County Health Department and is staffed by a rheumatologist or arthritis specialist.

There are over 10,000 arthritis victims in Frederick County, but only 20 percent of them are receiving adequate medical treatment.

After a patient is seen at the clinic, the specialist sends a written report back to the family doctor recommending follow-up care.

Arthritis, in its nearly 100 different forms, is the most widespread chronic disease and the No. 1 crippler in the country.

The Frederick County clinic is only one of six throughout the state, all of which are sponsored by the Maryland Chapter of The Arthritis Foundation.

To make an appointment to be seen at the clinic, contact the County Health Department at 662-1101.

Rocky Ridge News

By Harvey Pittenger

Mrs. Paul Stambaugh visited her parents, Mr. and Mrs. Charles Pittenger and family of Thurmont recently.

Mr. and Mrs. Carl Keeney and son, Calvin, visited Mr. and Mrs. Wadren Smith of Taneytown on Sunday.

Mr. and Mrs. Donald Mackley of near Taneytown visited Mr. and Mrs. Bruce Bowman and family recently.

Mr. and Mrs. Charles Keeney visited with Mr. and Mrs. John Stately and family of LeGore on Sunday afternoon.

Mr. and Mrs. John N. Cavell of Boyds spent Sunday afternoon with Mr. and Mrs. Warden of Taneytown.

Mr. Harney M. Pittenger of Rocky Ridge celebrated his 82 birthday on January 14.

Mr. Russell Putman visited Charles Kenney family recently.

ADULT EDUCATION

BOARD OF EDUCATION OF FREDERICK COUNTY

SPRING SEMESTER, 1976

GENERAL INFORMATION

Classes begin the week of January 26, 1976.

Meeting times: Unless noted otherwise, classes meet from 7:00-9:00 p.m.

Registration: Registration and collection of fees is accomplished at the first class meeting. Checks should be made payable to the school in which the class is held.

Fees: Most class fees are set on the basis of the number of sessions the class meets. The fee is based on \$1.00 per session. A 12 session class costs \$12.00, a 10 session class \$10.00, etc.

Materials: For some classes there may be a small materials fee.

Continuing Classes: Classes noted below with an asterisk (*) are continuing two semester classes welcoming new students.

Request for new classes: If you would like a class not offered below, please let us know. We will try to offer it, provided ten students and an instructor can be found.

Further Information: Contact the instructor or call 662-9200, ext. 270.

Center/Classes	Instructor	No. Sess.	Day(s)	Room	Fee
ERUNSWICK HIGH SCHOOL					
*Adult Basic Education/High School Equivalence (ABE/GED) (Begins Feb. 10)	Palamara	24	T&TH	107	Free
*Drawing & Painting	Wills	12	TH	100	12.00
*Horticulture (7:00-10:00 p.m.)	Cisar	12	M	Portable	12.00
Key Punch (Begins March 10 7:00-10:00 p.m.)	Kubat	10	W	105	10.00
*Physical Fitness — Men	Fraser	12	M	Gym	12.00
*Physical Fitness — Men	Foltz	12	TH	Gym	12.00
Shorthand Review	Hardesty	5	M	105	5.00
CARROLL MANOR ELEMENTARY					
Metric System (Begins Feb. 11)	Palamara	6	W	15	6.00
CATOCTIN HIGH SCHOOL					
*Auto Mechanics	Oland	12	W	Auto Shop	12.00
*Clothing	Lambertson	12	W	B-6	12.00
*Oil Painting	Shorb	12	M	B-14	12.00
*Woodworking (7:00-10:00 p.m.)	Kreh	12	T	A-1	12.00
EAST FREDERICK ELEMENTARY					
How to Help Children with Learning Disabilities	Page	12	W	7 Reading	12.00
Parent Volunteer Training in Reading (4:00-6:00 p.m.)	Gordon	10	W	Reading Resource	Free
EMMITSBURG LIFE LONG LEARNING COUNCIL					
EMMITSBURG ELEMENTARY SCHOOL					
Parent Volunteer Training in Reading	Johnson	10	T	Teacher Wk Room	Free
Physical Fitness for Women	Griffin	10	TH	Gym	10.00
Woodworking	Brake	8	M	Shop	8.00
MOTHER SETON SCHOOL					
Helping Your Child to Read	Sr. Mary John	4	W		4.00
SETON CENTER					
*Adult Basic Education/High School Equivalence (ABE/GED)	Fitzpatrick & Seess	24	T&TH		Free
Business English: Refresher	McIntire	6	M		6.00
Ceramics	Hall	10	TH		10.00
Crocheting	Warmley	6	W		6.00
Metric System	Fleming	4	TH		4.00
Square Dancing	Sword	10	W		15.00
Upholstery	Cregger	6	T		18.00
ST. JOSEPH HIGH SCHOOL					
Typing II	Sr. Mary Rose	12	TH		12.00
FREDERICK COMMUNITY CENTER					
Adult Basic Education/High School Equivalence (ABE/GED)	Reinhardt	24	M&W	Rec. Room	Free
FREDERICK HIGH SCHOOL					
Arc & Acetylene Welding (7:00-10:00 p.m.)	Linthicum	12	W	Ag. Shop	12.00
College Information for Parents	Van Pelt	2	M	Library	Free
*Commercial Photography (7:00-10:00 p.m.)	Dennison	12	T	G.A. Shop	12.00
*Graphic Arts (7:00-10:00 p.m.)	Dennison	12	M	G.A. Shop	12.00
Horticulture: Basic (7:00-10:00 p.m.)	Linthicum	12	M	Ag. Shop	12.00
Metric America	Baker	4	W	212	4.00
*Plumbing & Heating (7:00-10:00 p.m.)	Fawley	12	M	P. Shop	12.00
*Typing (3:30-5:30 p.m.)	Turner	12	T	222	12.00
GOVERNOR THOMAS JOHNSON HIGH SCHOOL					
Broadcasting: Introductory	Luce	12	T	32	12.00
*Clothing II	Lease	12	M	13	12.00
*Clothing I	Lambertson	12	M	11	12.00
Drafting & Blueprint Reading	Finnefrock	12	W	T-1	12.00
Driver Education (7:00-9:30 p.m.)	Dawson	12	M	30	40.00
*English for Foreigners—Beginning (6:30-8:00 p.m.)	Verity	24	T&TH	47	Free
*English for Foreigners—Intermediate (8:00-9:30 p.m.)	Verity	24	T&TH	47	Free
*High School Equivalence (GED)	Newcomer & Koch	12	M&W	44	Free
Introduction to High School Chemistry (6:45-10:00 p.m.) (Begins Jan. 21)	Cutler	18	W	38	12.00
Key Punch	Keeney	12	W	26	12.00
Machine Shop (7:00-10:00 p.m.)	Nicholson	12	W	T-6	12.00
Parent Enrichment Training (7:00-10:00 p.m.)	Klose	8	T	30	8.00
*Pottery	Culbertson	12	TH	115	12.00
*Shorthand I	Mayo	12	W	25	12.00
Shorthand Review	Memi	5	M	Off. Pract.	5.00
Typing I (1st Semester)	Ford	12	M	22	12.00
*Typing I (2nd Semester)	Ford	12	W	22	12.00
*Woodworking (7:00-10:00 p.m.)	Miller	12	W	T-2	12.00
*Woodworking (7:00-10:00 p.m.)	Miller	12	TH	T-2	12.00
GREEN VALLEY ELEMENTARY SCHOOL					
*Slimnastics	Grove	12	M	Gym	12.00
*Slimnastics	Grove	12	W	Gym	12.00
LIBERTY ELEMENTARY SCHOOL					
*Adult Basic Education/High School Equivalence (ABE/GED)	Stoner	24	M&W	Library	Free
LINGANORE HIGH SCHOOL					
Farm Equipment Construction & Machinery Repair (7:00-10:00 p.m.)	Shry & Riggs	12	M	Ag. Shop	12.00
*Horticulture (7:00-10:00 p.m.)	Shry	12	TH	Ag. Shop	12.00
Physical Fitness	Hisiro	12	W	Gym	12.00
Small Gas Engine Repair (7:30-9:30 p.m.)	Riggs & Zimmerman	12	TH	Ag. Shop	12.00
LUCKY'S TRAILER COURT					
RT. 40	Marshall	12	W		Free

Center/Classes	Instructor	No. Sess.	Day(s)	Room	Fee
MARYLAND SCHOOL FOR THE DEAF					
Adult Basic Education/High School Equivalence (ABE/GED) (6:30-8:30 p.m.)	Padden	24	M&W		Free
MIDDLETOWN ELEMENTARY SCHOOL					
Parent Enrichment Training (7:00-10:00 p.m.)	Baker	8	T	Music Room	8.00
MIDDLETOWN HIGH SCHOOL					
*Adult Basic Education/High School Equivalence (ABE/GED)	Nastasee	24	M&W	Open Space Home Ec.	Free
Cake Decorating: Advanced & Beginners	Phillips	6	M		6.00
*Clothing II	Pennington	12	W	Home Ec.	12.00
Furniture Restoration (7:00-10:00 p.m.)	Nichols	12	M&TH	I.A. Shop	12.00
*Painting	Foltz	12	M	Art Room	12.00
*Physical Fitness (Begins Jan. 25)	Estep	12	Sunday	Gym	12.00
*Slimnastics	Estep	12	M	Gym	12.00
*Shorthand II	Newkirk	12	T	Bus. Ed.	12.00
Swimming (7:00-8:00 p.m.)	Hughes	12	W	Pool	12.00
*Typing II	Newkirk	12	W	Bus. Ed.	12.00
NEW MARKET ELEMENTARY SCHOOL					
*Adult Basic Education/High School Equivalence (ABE/BED)	Ambrose	24	T&TH	Library	Free
ROCK CREEK CENTER					
*Adapted Parent/Child Physical Education for Learning Disabilities (10:00 a.m.-12:00 noon)	Krantz	12	Sat.	Gym	12.00
*Adult Basic Education	Pansa	24	Fri.	Pre-Voc.	Free
*Parent/Child Activities for Speech Therapy (10:00 a.m.-12:00 noon)	Daduk	12	Sat.	41	12.00
Middle Eastern (Belly) Dancing: Advanced (7:00-8:00 p.m.)	Jamila	8	M	Cafe.	8.00
SAGNER RECREATION CENTER					
*Adult Basic Education/High School Equivalence (ABE/GED)	Lipan & Baker	24	M&W		Free
SENIOR CITIZEN CENTERS					
CATOCTIN VIEW					
*Sing-a-Long	Ball	12	M		Free
FREDERICK (N. Market St.)					
*Art (1:30-3:00 p.m.)	Friedman	12	Fri.		Free
*Ceramics (1:00-3:00 p.m.)	Smith	12	T		Free
THURMONT					
*Art (10:00-12:00 noon)	Katzenberger	12	T		Free
*Ceramics (1:00-3:00 p.m.)	Elower	12	Fri.		Free
*Leather Craft	Butts	12	T		Free
WALKERSVILLE (Church of Christ)					
*Arts & Crafts (1:00-3:00 p.m.)	Smith	12	W		Free
THURMONT MIDDLE SCHOOL					
*Adult Basic Education/High School Equivalence (ABE/GED)	Thomas	24	T&TH	4-E	Free
URBANA ELEMENTARY SCHOOL					
*Adult Basic Education/High School Equivalence (ABE/GED)	Dhority	24	M&TH	10	Free
Ceramics	Ritchie	12	TH	Library	12.00
Slimnastics	Sterling	12	T	Library	12.00
VALLEY ELEMENTARY SCHOOL					
*Adult Basic Education/High School Equivalence (ABE/GED)	Hays	24	M&TH	Art Room	Free
Gymnastics	Flynn	12	W	Multi-Purpose	12.00
WAWERLEY ELEMENTARY SCHOOL					
Basic Photography	Nikirik	10	T	Art Room	10.00
*Middle Eastern (Belly) Dancing: Beginning (7:00-8:00 p.m.)	Jamila	8	W	Gym	8.00
*Middle Eastern (Belly) Dancing: Intermediate (8:00-9:00 p.m.)	Jamila	8	W	Gym	8.00
WAWERLEY GARDENS RECREATION CENTER					
Adult Basic Education/High School Equivalence (ABE/GED)	Lewis	24	T&TH	Rec. Room	Free
Slimnastics (Begins Feb. 4)	Sterling	12	W	Rec. Room	12.00
WEST FREDERICK JUNIOR HIGH SCHOOL					
*Frederick Singers	Bowen	12	M	230	Free
*Furniture Refinishing & Repair (7:00-10:00 p.m.)	Bussard	12	M	Maint. Shop	12.00
*Small Gas Engine Repair (7:00-10:00 p.m.)	Baker	12	M	223	12.00
*Small Gas Engine Repair (7:00-10:00 p.m.)	Baker	12	T	223	12.00
*Woodworking (7:00-10:00 p.m.)	Leatherman	12	M	Wood Shop	12.00
*Woodworking (7:00-10:00 p.m.)	Leatherman	12	T	Wood Shop	12.00
WOODSBORO ELEMENTARY SCHOOL					
*Physical Fitness	Williams	12	M	Gym	12.00
YMCA — North Market Street					
Adult Basic Education/High School Equivalence (ABE/GED)	Staff	24	T&TH		Free