



# Emmitsburg Chronicle

SERVING THE WONDERFUL PEOPLE OF THE CATOCTIN MOUNTAINS

EMMITSBURG CHRONICLE, EMMITSBURG, MARYLAND, THURSDAY, MARCH 20, 1975

Weekly Thought

It takes patience to improve the human race and it also takes time.

SINGLE COPY 10c

## Most Anything At A Glance

- By Abigail -

It has come to my attention—as most things do—that I made several errors in last week's column. As a result, I've annoyed our Planning and Zoning Commissioners.

I cannot use old age as an excuse for inaccuracy, as I must now eat that delicacy that no one likes... humble pie. I wrongly termed the March 5 Planning and Zoning meeting as a "Board of Appeals" meeting.

My other error, regarding the entrance location to the proposed Super Thrift, was an error of omission. I should have mentioned that because the entrance will meet up with Maryland Route 97, the State Highway Commission has final authority over its location. The location is not "up to the discretion of the owners."

Emmitsburg still seems "blessed" with a few persons who have no regard for personal property and the rights of others. Early this week, Gert Roger's store was vandalized. Some one maliciously hurled a piece of pavement through the front door window. That window pane, if you recall, had been replaced just recently following last week's break-in.

This latest window-smashing seems to have been done in spite, for the culprit did not attempt to rob the store. I only wish I had seen that person as he tossed the chunk of pavement through the glass.

Incidentally, Frederick County Fire Investigator T. S. May, who originally concluded that the Nester House burned because of "electrical malfunction," has re-opened the case for investigation. Of course, many folks think it was an act of arson—little consolation to the group who tried to save the old building.

Mount Saint Mary's College, one of the oldest in the nation, has produced over the years many a famous alumni. That's common knowledge. However, I was amazed to learn that the late film star, Susan Hayward, who died last week, was married to Eaton Chalkley, a graduate of Mount Saint Mary's. Eaton, who died in 1966, was a basketball star during his college days. Small world, isn't it?

If the rain continues through today, you'll be able to find me out in the back yard... building an ark. For a short while Wednesday, I thought Emmitsburg was going to be surrounded by a moat. At least two roads were closed—S. Seton Ave. and Annandale Rd.—while flood waters swelled over the blacktop.

Sort of reminded me of Agnes (but thank God on a smaller scale).

## Blue-Gold Dinner For Cubs Sunday

Cub Pack 1060 of Emmitsburg, will hold its annual Blue and Gold Dinner on Sunday, March 23 at 1 p.m. in the VFW Annex. This will be a covered dish dinner, with ham, coffee and cold drinks and table settings being provided by the Pack. All Cub Scouts, Webelos and their families are invited to attend. A film on Scouting will be shown and awards will be given out.

Future plans include an overnight camping trip for the Cubs in May, a fishing expedition in June and a family picnic and afternoon of games in July.

## Sr. Citizen Center Closed Mar. 28-31

During the week of March 24, the Center will be open through Thursday, March 27. On Tuesday, March 25, there will be a Nutrition Lecture after the meal at the school. On March 26, the forenoon will be a workshop. The Center will be closed Good Friday and Easter Monday.

Work is continuing in preparation for the annual Spring Bazaar, April 19, 1975.

## Ladies Auxiliary Plans Activities

The regular monthly meeting of the Ladies Auxiliary to Emmitsburg Memorial Post 6658, Veterans of Foreign Wars, was held March 6. This was the occasion of the annual Covered Dish Social.

One new member, Elaine Holmes, was voted upon favorably.

A letter was read from the FCS Management, Inc., Shopping Center Managers, asking the Auxiliary to participate in their Bicentennial Celebration, the first week honoring Emmitsburg. There was some discussion on this matter and a committee was formed with the following ladies volunteering to help: Rita Byard, Martha Hemler, Anna Bushman, and President Evelyn Ott.

President Ott announced that the Valentine Party given for the patients at Raines Cottage, Victor Cullen Hospital, was enjoyed by the patients as well as the ladies taking part. President Ott thanked all who participated in any way.

An Easter Party is being planned for March 20. The ladies will meet at the VFW at 7 p.m. There will be an "Easter Egg Hunt," using plastic egg filled with goodies, pom pom bunnies will be made by Martha Hemler and Rita Byard to be given to each patient in Raines Cottage. Name tags will again be made, as this seemed to make it easier for the ladies to get better acquainted with the patients. Martha Hemler will bake a bunny cake, some of the members will make cookies, and punch will be provided by the Auxiliary.

It was announced by President Ott that when the men have a feed cards will sent only to ladies not having a member of the VFW in the household. Any ladies in this category who did not receive cards for the oyster feed should contact Mary Topper or President Ott and their names will be added to the list.

Delegates for the State Convention in June to be held in Ocean City, Md., are as follows: Dixie Vivaldi, Gloria Martin, Catherine Hodge, Lois Hartdagen, Judy Larsen, and alternate, Mary Topper. Further plans will be made at a later date.

A motion was carried to use the remaining Buddy Poppies to make wreaths for Memorial Day. President Ott introduced Sherry Topper, who was selected as the Auxiliary's Poppy Queen. Sherry also won the District 7 contest on March 1, and will compete in the State Contest.

The ladies will visit the veterans at Newton Baker Hospital on Sunday, March 23, leaving from the VFW Post Home at 12:00. Those planning to make this trip are: President Ott, Mary Wetzel, Annie Sanders, Anna Bushman, Catherine Hodge and Gloria Martin.

The ladies are planning to have a bake sale in front of the Emmitsburg Bank on April 4, beginning at 4 p.m. The committee for the bake sale is as follows: Mary Topper, Rita Byard, Martha Hemler, Dolores Ray and President Ott. Members will be contacted by phone one week before the sale.

A motion was carried to have the meeting night published in the Community Calendar prepared by the Emmitsburg Middle School.

Diane Pryor and Joyce Orndorff expressed the joy experienced by transporting the Senior Citizens to the "Food in Friends" on Tuesday and Thursday of each week.

The ladies will sponsor a Sarah Coventry Party on April 17 at 7:30. Susan Glass will be the Demonstrator and President Ott will assist.

Catherine Hodge collected the good works for her Community Action Report.

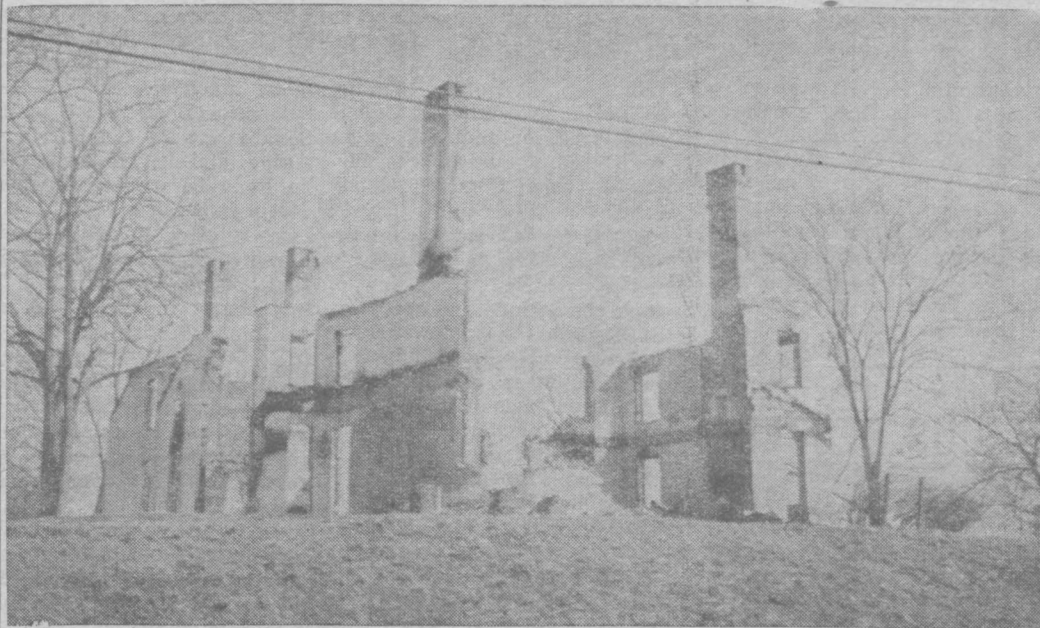
Refreshments for our April 3rd meeting will be in charge of Danielle White and Theresa Mackley.

**S. Myers Reports To Air Force Base**

Steven Allen Myers, son of Mr. and Mrs. Eugene E. Myers, E. Main St., has reported to Lackland Air Force Base in Texas for his basic training. Steve is a 1974 graduate of St. Joseph's High School.

His present address is: AB Steven A. Myers, 219664313, PSC #4, Egn. 3701, Flight 8231, Lackland AFB, Texas 78236.

## Fire Destroys Nester House Saturday Morning



Less than two days after the Chronicle published a photo of the Nester house, it was leveled by an unscheduled blaze early Saturday morning. The building was to be used for fire training by local firemen. —Chronicle Photo

## ZIP COLUMN High Waters Close Roads Wednesday

Four new stamps are to be issued at our office March 26, 1975.

The 10-cent Haym Salomon stamp is one of a set of four stamps honoring lesser known heroes of the American Revolution. California artist Neil Boyle designed all four to be issued on March 25 in four separate cities.

Each stamp will bear a brief printed message on the reverse side under the adhesive giving information about the stamp subject. The Postal stamps of 1975 were the first U. S. stamps to bear printed messages on the back.

Born in Poland of Jewish-Portuguese parents, merchant and banker Haym Salomon provided much of the money needed to carry on the Revolution and later to save his adopted country from financial collapse. Working with Robert Morris, Superintendent of Finance, Salomon advanced loans to the government and gave generously of his own resources to pay the salaries of government officials and army officers. Robert Morris' diary for the years 1781-1784 frequently states: "I sent for Haym Salomon."

Earlier, Salomon's fervor for American independence drew him to the Sons of Liberty, and his underground activities twice led to his arrest and imprisonment by the British. First day of issue, Chicago, Ill.

Salem Poor is another in this set. Poor was a black militiaman whose conduct was so exceptional at the Battle of Bunker Hill that it was noted in a petition signed by 14 Massachusetts officers. The petition, dated months after the battle, said that "a negro called Salem Poor, of Col. Frye's regiment, Capt. Ames' company, in the late battle at Charlestown, behaved like an experienced officer, as well as an excellent soldier." Noting that it would be "tedious" to go into detail concerning Poor's conduct, the officers stated: "We only beg leave to say, in the person of this said negro centers a brave and gallant soldier." Poor later served at Valley Forge and White Plains.

This first day of issue will be at Cambridge, Mass.

Sybil Ludington, is the third person honored in this series. She was the daughter of Colonel Henry Ludington, and lived in Patterson, New York, a few miles from Danbury, Connecticut. On the night of April 26, 1777, she rode muddy and rain-soaked through the Connecticut and New York countryside rallying her father's militia regiment with the call: "The British are burning Danbury! Muster at Ludington's!" The militia responded, 400 strong, and moved at daybreak. Although Danbury was looted and burned, British General Tyron lost a tenth of his forces in the ensuing battle and was forced into a disastrous retreat to the safety of ships at Fairfield. The route of Sybil's ride is indicated by three New York State roadside markers from Carmel to Stormville.

The first day of issue will be at Carmel, New York.

The last in this series, and one which will be in very short supply at our office, is the 18-cent Peter Francisco.

Francisco joined the Continental Army at 15, serving with distinction in seven major battles including the one ending with the British surrender at Yorktown. His herculean strength and exploits became legendary around American campfires. He re-

(Continued On Page Six)



Heavy rains yesterday resulted in several road closings. Shown above is Hartman's bridge on the Annandale Road. —Chronicle Photo



One motorist attempted to cross Tom's Creek bridge on Business Rt. 15 yesterday, but this is as far as he got. The road was closed throughout the afternoon.

## Sunrise Service At Mt. Tabor Church

On Easter Sunday, March 30, the Rocky Ridge Youth Fellowship will hold its Easter Sunrise Service at 6:00 a.m. The service will be held at Mount Tabor Church, Rocky Ridge, Md.

The speaker will be Mr. Robert Martin, who graduated from Catoctin High School in 1970. Everyone is invited to attend this service.

## PTA To Meet

**Tuesday, March 25**

A report on the Community Birthday Calendar project will be given when the Emmitsburg School PTA meets Tuesday, March 25, at the school.

The 7:30 p.m. meeting will also include election of officers for the next school year, a report on the April parent-teacher conferences, and information on the April 6th school dedication.

Dorothy Cryanec, supervisor of math in Frederick County, will be the guest speaker. Refreshments will be served.

## Miss Bushman Is Bride Of N. Carico

Miss Helen E. Bushman, Baltimore, and Norris Carico, also of Baltimore, were united in marriage on March 1. Rev. W. Ronald Fearer performed the single ring ceremony at Elias Lutheran Church.

Mrs. Carico is the daughter of Mrs. Anna Bushman, Emmitsburg, and the late Charles W. Bushman.

## 4-H's Support European Delegates

The March meeting of the Tom's Creek 4-H Club was held at the home of David, Michael and Susan Hill.

The Hoard's Dairyman Judging Contest was judged. The group judged the five different breeds of dairy cattle. They are Holsteins, Ayrshires, Jerseys, Brown Swiss and Guernseys. The club split up into groups to judge the cattle. Ronnie Kling and Mike Weimer were in charge of the judging.

The club voted to give \$50 toward sending the Maryland 4-H dairy judging team to Europe. Nominations were made for Area I County Council delegate. James Valentine was elected.

The tour schedule was planned for the tour on March 29. The group is going to Capital Milk Producers, the farm of John Crum, the Maryland-West Virginia Bull Stud, and the Schaffer farm.

After the meeting, Easter baskets and candy bars were handed out for the club to sell. The club had one new member, Bobby Myers. Refreshments were served by Mrs. Hill.

## Softball Meeting Sunday At 1:30

The Freeman Shoe Softball Team of the Emmitsburg Slowpitch League, will meet this Sunday, March 23, at 1:30 p.m. at VFW. All players from last year are urged to be present at this meeting.

## Candle Course In Emmitsburg

A short course in candle-making will be taught at Seton Center beginning Wednesday, April 2, from 7-9 p.m. It will continue each Wednesday at the same time for four weeks at a cost of \$2 per person per session for instruction. The fee may be paid in total at the first meeting or spread out over the sessions.

Mr. John J. Porter of the Busy Bee Shops in Frederick and Hagerstown, has organized the class at the request of the Emmitsburg Lifelong Learning Council.

Mr. Porter says that the first class meeting will be an orientation session to provide general information about candles and how they are made. Samples will be on display. At this session, students will choose the materials they will be using in subsequent classes. Mr. Porter estimates that the cost of material per student will be about \$10. It, too, can be paid either in a lump sum or as the materials are needed.

The second week will be devoted to making a candle in a metal mold. The third week will be the pouring of candles in plastic molds in the shape of animals, birds, etc.

During the fourth session, the instructor will demonstrate decorating of candles and show some of the more unusual types of candles. Students will have the opportunity to decorate candles themselves. This final session will develop according to interests which students have expressed in the first three weeks.

One Busy Bee Shop is located in Frederick County Square Shopping Mall which is promoting Emmitsburg during April as part of the Bicentennial celebrations. With this in mind, Mr. Porter can demonstrate how candles were made in Colonial times if students are interested.

## Choir To Perform Easter Cantata

Palm Sunday evening, Mar. 23, the Easter Cantata "Hallelujah For The Cross," will be presented in the United Presbyterian Church of Emmitsburg at 7:30 o'clock, by members of the Church Choir and guests.

The cross, the universal symbol of Christianity on which our Lord died to reconcile God and man, provides for our salvation. Although an instrument of death, it signals a beginning, not an end. Because of the cross, we have an empty tomb, a great commission, an ascended Lord, an empowered church and a glorious hope of Christ's return. In this cantata, the arrange, John W. Peterson, seeks to tell the dramatic story of redemption through narration and song. The theme of its message though old and familiar, never loses its charm. Surely even Heaven will someday echo with the sound of redeemed voices singing again a glad "Hallelujah For The Cross."

Members of the choir include: Margaret Franklin, Betty Trethevery, Chris Chenoweth, V. Poole, soprano; Mayme Hays, Mary Franklin, Lee-anna Franklin, 1st alto; Anna Margaret Martin, Margaret Poole, 2nd alto; John Martin, Eugene Ackerman, tenor; Samuel Hays, Donald Hollabaugh, Harold Hollabaugh, bass; and Alfred Gilbert, organist.

Everyone is invited to share in this inspirational service in preparation for Holy Week.

## Palm Sun. Tradition At Elias Church

Holy Week Services will begin in Elias Lutheran Church with Palm Sunday Services at 10:30 a.m. Following the custom of past years, the Luther League of the congregation will provide palms for distribution to the Sunday Church School pupils and those in attendance at the worship services. Special music will be provided by the Adult Choir, directed by Mrs. Donald Elyer and the Brass Choir, directed by Mr. Robert Frushour.

Holy Week Services will continue with Services being held Wednesday, March 26 at 7:30. The Sacrament of Holy Communion will be administered Holy Thursday at 7:30 with the Good Friday Tenebrae Service scheduled for Friday, March 28 at 7:30.

## Letter To Editor

Editor, Emmitsburg Chronicle:

As a candidate for public office in Carroll and Frederick Counties during the 1974 elections, I became aware of a gross inequity that existed, particularly in Carroll County. That inequity being — a hardship for certain citizens to register to vote.

At the request of Willard Morris, State Administrator of Election Laws, House Bill 63 was introduced January 10, 1975 in the Maryland General Assembly. Its purpose — to provide for uniform voter registration by mail throughout the State of Maryland.

Recently Delegate Raymond E. Beck, evidently with unanimous support from other Delegates and Senators from Baltimore, Carroll and Frederick Counties, amended this bill to exclude Carroll and Garrett Counties. Delegate Beck was quoted as saying the amendment was made so that the matter can be studied before being enacted. During the last campaign, veteran legislators commented that to commit something to study, was a sure way to 'kill' it.

I feel that you, our local legislators have 'missed the boat' on this bill and passed up a golden opportunity to pass some positive, constructive legislation for the benefit of all citizens of voting age.

Registering voters by mail is not something new. Indeed, you representatives from Baltimore County provided this for your residents some time ago. Other counties providing this service include: Howard, Harford, Anne Arundel, Prince George's, Montgomery and Baltimore City. I talked with election officials in some of these counties and learned that they are pleased with voter registration by mail.

In Carroll County the Elections Office is open just three days a week—Tuesday, Wednesday and Thursday. The hours are 9 a.m. to 12:30 p.m. and 1:30 p.m. to 4:30 p.m. Limited supplemental hours and roving registrars are held just prior to elections.

For the most part, working persons and particularly those living in the county and working in other counties have a difficult time of it getting to Westminster to register. Mr. Airy, Woodbine, Eldersburg and other areas have many new residents who work elsewhere. Why should they waste time and valuable gasoline running to the county seat?

In reference to H.B. 63, Delegate Beck has been quoted, "I don't see the need. It doesn't mean people will vote. Just like you can't legislate morality, you can't legislate good citizenship and if you make it too easy it loses its effect."

I disagree with this negative thinking!

Our form of government provides its good citizens with certain basic rights. And in our democracy, voting is the method by which we citizens and taxpayers, rich and poor, can directly participate. I think that registering to vote, with proper controls, should be made as convenient as possible. By doing this, we might just encourage more people to vote and get involved.

Sincerely,  
K. Grady Caple, Jr.  
Silver Run

## Famed Chorus

**At G-Burg College**

The Morehouse College Glee Club from Atlanta, Ga., will present a concert in Gettysburg Monday, March 24.

Sponsored by the Gettysburg Black Student Union, the concert will be held in Christ Chapel at 7:30 p.m.

The Morehouse College Glee Club was founded in 1911 and is an integral part of the college. The annual membership of 80 to 100 men represents every department in the college. The glee club is under the direction of Dr. Wendell P. Whalum, chairman of the department of music at Morehouse.

After providing the music for the funeral service of Dr. Martin Luther King, Jr., the glee club was chosen to perform selections for educational television and memorial concerts in honor of the late outstanding Morehouse alumnus.

The Glee Club's appearance in Gettysburg is open to the public with no admission charge.

## Appeals Board To Decide On Requests

Emmitsburg's Board of Appeals members met Tuesday evening to hear applications for variances from zoning regulations, submitted by P. A. & S. Small Co., developers of the proposed Super Thrift market, and by local appliance dealer Eugene Myers.

Board members Gene LaCroce (Chairman), Pat Boyle (Secretary), John Reaves and County Planner Sam Jones, listened to P. A. & S. Small representative Jim Miller discuss the need for three variances to 1) reduce the required 40' front yard to 20'; 2) reduce the required 40' rear yard to 20'; and 3) reduce the required number of parking spaces from 216 to 128.

According to Miller, the site at the east end of town is too small (approximately 2.5 acres) to accommodate the required front and rear yards. The topography and proximity of a flood plane also reduce the area of land available for parking spaces. He added that P. A. & S. Small plan to mark-off 10' x 20' parking spaces larger than the 9' x 20' spaces required by zoning regulations to make loading groceries and getting into their cars easier for patrons.

Filling Miller's comments, Chairman LaCroce called for opposition opinions from the 25 or so people who attended the meeting. Mr. & Mrs. Robert Gauss, Emmitsburg, elected to speak for those "disapproving" the plans. Mrs. Gauss presented a petition (bearing 127 signatures) against construction on the site chosen by the company, and she stated she felt the planned market would be an "eyesore" sitting upon the hill. Said Mrs. Gauss, "It will be the first thing you'll see in town—a cinder block store. There's a better place to build this store."

Miller replied that his company "spent a great deal of time looking at sites," and they felt the east-end location was "adequate" in size. He added that the site was chosen primarily because water and sewer lines were already installed.

Mrs. Gauss clarified her statement by explaining she was not opposed to the store locating in Emmitsburg, but was opposed to the site location.

Miller also elaborated on the possibility of a 'satellite store' locating at the Super Thrift site. Plans call for a building with 22,000 sq. feet of floor space — while Super Thrift needs only 17,000 sq. feet. According to Miller, the additional 5,000 sq. feet may be used for such satellite store, but plans are indefinite as yet.

Mr. and Mrs. William Gillespie, residents of Emmitt Gardens, asked, "Do we have anything to say about what store(s) will go next to it?" Mrs. Gillespie added, "If you cannot meet the (zoning) requirements now, then variances shouldn't be granted."

Board of Appeals members decided to consider the matter carefully and to arrive at a decision within a week. However, Chairman LaCroce reminded those attending the meeting that the topics under study were the three variances alone.

In other action:

Board of Appeals members decided to grant the variance requested by Eugene Myers, Myers plans to expand his business to his adjoining building which was previously zoned residential.

## Food 'N Friends

**Menu For Mar. 25**

The Food 'n Friends menu for Tuesday, March 25, has been announced. There will be no meal on Thursday, March 27. The menu is as follows: Hot Turkey with Gravy, Sandwich, Whipped Potatoes, Sauerkraut, Cranberry Sauce, Jelly Bean Cake, Orange Juice, Milk.

## LITTLE LEAGUE

**MEETING SUNDAY**

There will be a meeting of the Emmitsburg Little League this Sunday, March 23, at 1 p.m. at the VFW. All officials and other interested persons are urged to attend.



## YOUR VETERINARIAN SPEAKS

**Stuffed "Pets" Don't Cry**  
Don't give your children baby rabbits, chicks or ducks for Easter, urges the Maryland Veterinary Medical Association (MVMA). Not only is it cruel to give these animals as gifts, but it can also be dangerous.

Rabbits, chickens and ducks are farm animals; they rarely survive in the home. A young child's enthusiasm over the new pet often results in unknowing cruelty as legs are broken and wings crushed. If the animal dies or is injured, it is a traumatic experience for the child.

If the animal survives, it generally ends up in an animal shelter. Because so many thoughtless people continue to give baby rabbits, chicks and ducks as gifts, shelters are unable to handle them and often have no choice but to destroy them.

These are outdoor animals. They cannot be housebroken and may cause serious house-keeping problems. They are not tame, and will never learn to like being handled by hu-

mans. In addition, many are disease carriers. The National Center for Disease Control in Atlanta and other public health authorities warn that children and adults in close contact with these animals may be exposed to salmonellosis, a severe gastro-intestinal infection. While the disease is rarely fatal, it requires medical treatment, often including hospitalization. In addition to the family, other pets in the household may become ill.

Because of the problems surrounding Easter pets, both the Maryland Veterinary Medical Association and the American Veterinary Medical Association suggest that you give youngsters stuffed toys instead.

Easter and the coming of spring should be a time of joy and rebirth, not a period of physical illness, psychological trauma and the needless deaths of young animals.

NEXT: Travelling with Your Dog.

## TAX—Q &amp; A

Q. Is there a late fee on taxes not paid by the due date?

A. Interest at the rate of six per cent a year must be paid on taxes not paid on or before their due date, even if an extension of time for filing is granted. A penalty of half of one per cent of the unpaid taxes will be imposed for each month, or part of a month, beyond the due date that the tax remains unpaid. The maximum penalty is limited to 25 per cent. It will not be imposed if a taxpayer can show that the failure to pay is due to a reasonable cause.

Q. I found an error in my 1973 return, so I filed an amended return and got a refund back. The refund includ-

ed interest. Is the interest taxable? A. Yes. If you receive a tax refund that includes interest on the amount refunded, the interest must be included in your gross income.

Q. For what reasons are tax returns selected for audit? Does an audit mean the IRS thinks a taxpayer has filed a fraudulent return?

A. The usual reason for selecting a tax return for examination is to verify the correctness of income, exemptions, or deductions that have been reported on the return. However, some returns are selected as part of a random sample for research studies. The vast majority of taxpayers are honest and have nothing to fear from an examination of their tax returns. An exami-

nation of such a taxpayer's return does not suggest a suspicion of dishonesty or criminal liability. It may not even result in more tax. Many cases are closed without change in reported tax liability and, in many others, the taxpayer receives a refund.

Q. What is the federal gasoline and oil tax credit?

A. A credit of two cents per gallon may be claimed on gasoline (unless it was aviation fuel) used other than as a fuel in a highway vehicle registered, or required to be registered, for use on the public highway. Similarly, a six cents per gallon credit may be claimed for lubricating oil used other than in a highway motor vehicle. Examples of use include the operation of a motor boat, power lawn mower, power saw and similar equipment. For more information, see IRS Publication 378, "Federal Fuel Tax Credit or Refund for Nonhighway and Transit Users." It's available by calling or writing a nearby IRS office.

## N.A.S.C. Praises Byron Legislation

The National Alliance of Senior Citizens this week praised the work of Congressman Goodloe Byron in behalf of the retired in America.

"In co-sponsoring legislation to raise the amount of money social security recipients may earn without assessment against their benefits, Mr. Byron has demonstrated his concern for the economic difficulties of older persons," said Stephen Sale, NASC Executive Director.

"The present outside income limitation under Social Security is a barrier not only to the economic well being of senior citizens, but also clouds their self-respect and independence," continued Mr. Sale. "This restriction is one of the primary causes of today's most wasted resource, that of the lost contributions to our society by experienced and concerned retired persons."

The National Alliance of Senior Citizens welcomes Mr. Byron's approach to the problems of the aged, and hopes the Congress will adopt legislation which will eliminate the restrictions on the ability of the elderly to help themselves.

## Dynamics Sponsor Skating Party

A Roller Skating Party, sponsored by the Dynamics Majorette Group, will be held at the Rainbow Roller Rink, Taneytown, on April 1. Admission is \$1.25 plus skate rental. A bus will be leaving Mother Seton School at 6:30 p.m. that evening. Bus fare will be 25c per person and the party is open to the public.

Members are reminded that uniform payments are to be completed by the end of March.

## Beall To Compile Nursing Home Data

Headlines in recent years have pointed to thousands of cases of faulty or fraudulent operation of some of our nation's nursing homes. Senator J. Glenn Beall, Jr. (R-Md.) is cosponsoring a measure that will set up a center to compile all information obtained in the many probes of the nursing home industry.

Senator Beall serves on the Senate Special Committee on Aging and its Subcommittee on Long-Term Care which recently released a report on its own lengthy investigation of nursing home care, indicating that "50 per cent of the nursing homes in the U. S. are substandard with one or more life-threatening conditions." In addition to this study, there have been numerous such investigations of nursing home care on the local, state, and federal levels over recent years.

"It is inevitable, first of all," notes Beall, "that there will be duplication of effort when so many agencies are probing a single industry. Our bill will set up a clearing house for information in this area that would avoid the duplication problem. In addition, this plan would help discover relationships in the findings of the various investigations. And, eventually, we hope this coordination effort will lead to more effective development of improvements in the nursing home business throughout the entire nation."

The center set up to coordinate the investigation efforts would be required to report regularly to the Congress until nursing home care is equalized at a high level of quality and efficiency. The Maryland Senator calls the need for such action urgent, "primarily because we owe our citizens the right to proper care in their senior years, but also because there are too many excellent nursing homes that are being hurt by these widespread investigations. I don't think we can let the bad apples spoil the whole nursing home industry at the expense of our older Americans."

## Sunday Show At G-Burg Planetarium

"Great Balls of Fire" is the title of the March planetarium show scheduled at Gettysburg College's Hatter Planetarium, Sunday, March 23 at 2:30 and 4:00 p.m.

Dr. Laurence Marshall, assistant professor of physics, will offer the presentation on the sun as well as other ordinary and unusual stars found in the universe.

The shows are open to the public at no charge.

## Director Attends Zoo School

Mr. Richard Hahn, director of Catocin Mountain Zoological Park, Rl, Thurmont, was one of only forty professionals who were accepted into the first professional management development school or zoo and aquarium directors.

Sponsored by the American Association of Zoological Parks and Aquariums (AAZPA), the school was conducted at Oglebay Park, Wheeling, W. Va., site of the AAZPA executive offices.

AAZPA is a national organization dedicated to the preservation of the world's wildlife. The organization established its offices at Oglebay Park in 1972 and since that time has quadrupled its membership to some 2,000 members representing 246 public and private zoos and aquariums in the United States and many zoos throughout the world. The AAZPA's main objective is to advance zoos and aquariums as educational, conservation, and recreational forces in our society.

Development of the school was made possible by a grant under the National Museum Act, Smithsonian Institution

Program. The school is designed to sharpen administrative skills in order to deal with changing social, political and economic environments.

## SJHS Grad Earns Top College Honors

Kathleen Grace Muir, daughter of Mr. and Mrs. William Muir, Box 135, Cascade, Md., a senior at Maryland College, Scranton, Pa., has been named to the first honors Dean's List for the fall semester of 1974.

At Maryland, Miss Muir, a 1972 graduate of St. Joseph's High School, Emmitsburg, is working towards a bachelor of science degree in home economics.

To merit first honors on the Dean's List at Maryland, a student must attain a quality point index of 3.55 to 4.0. Second honors are awarded to students with a QPI of 3.25 to 3.54.

There's a word for the fear of the number thirteen. It's triskaidekaphobia, from the Greek, of course.

## WHAT'S THE ANSWER?

QUESTIONS ABOUT THE ENERGY ISSUE WERE SOLICITED FROM PEOPLE-ON-THE-STREET IN SIX MAJOR CITIES BY GULF OIL CORPORATION. HERE IS ONE OF THE QUESTIONS:

▶ HAVE WE ENOUGH FUEL RESERVES TO LAST FAR INTO THE FUTURE?



▶ ANSWER: Plenty — enough for at least 100 to 200 years on the North American continent. Coal, shale oil and nuclear resources are very large. Whether we develop these resources depends on our paying the enormous cost required. If we are willing to pay the price, then we will have plenty.

DO YOU HAVE A QUESTION ON ENERGY? Write to: What's the Answer, Gulf Oil Corporation, P.O. Box 1166, Pittsburgh, Pennsylvania 15230.

## MEXICO'S DELICIOUS DESSERT



Blending Mexican food and entertainment ideas can make a simple, inexpensive meal into a fiesta affair. The secret, according to Waring, is in color, spice and playfulness, to remind us that spring is just around the corner.

South-of-the-border decor is a study in contrasts. Mexicans use bright yellow dishes and deck the table with electric blue paper flowers. They add shiny tin ware, pottery mugs, papier-mache animals and wooden spoons to make mealtime fun. Here is a recipe from the Land of Eternal Spring to give the dinner table a new glow.

## Blender Caramel Flan

Preheat oven to 350°.

3/4 cup sugar

4 eggs

1/4 cup sugar

1 1/2 cups milk

1 tsp. vanilla extract

1 tsp. ground nutmeg, or 1/2 tsp. cinnamon

In a heavy skillet melt the 3/4 cup sugar on low heat, stirring constantly. When it has caramelized (turned a golden brown), pour at once into four 8-oz. custard cups, dividing equally between each.

In blender container, blend eggs and 1/4 cup sugar on medium speed. Add milk, vanilla, nutmeg, and blend on medium speed until well blended. Pour mixture into custard cups, and set the cups into a 9 1/2 x 11" pie pan. Pour hot water into the pie pan, around the cups, about halfway up the sides. Make sure no water spills into the custard. Place in 350° oven, bake for 45 minutes. A knife inserted in center of custard should come out clean when done.

Cool. Serve in cups, or unmold onto plate or dessert glass and pour sauce over custard. Serves 4.

## Portuguese Sweet Bread For Easter Celebration

Easter, a time for re-awakening, is one of the important Feast Days of the Old World. Most countries have a traditional bread, something important in appearance and taste to celebrate breaking the fast of Lent.

The Azores, a Portuguese Colony off the Coast of North Africa, incorporate an Easter egg into the dough as a symbol of the beginning of life. The egg, hard cooked in the shell, is placed in individual portions of the dough, then secured with a cross fashioned of more dough. It looks special and appropriate for the season.

The bread dough is sturdy and satisfying, made rich with sugar, margarine and eggs. The same dough is also used for the fragrant breakfast rolls that tourists remember nostalgically returning from travels to Portugal. For everyday eating the dough is shaped in a gently rounding roll about six inches in diameter. It is brushed with beaten egg, then sprinkled with coarse sugar before baking. The dough is easy to handle and can be shaped into an impressive braid or coil.

Method for making the traditional bread is the updated Rapidmix method developed by the Test Kitchens of Fleischmann's Yeast. It eliminates the step of dissolving yeast in warm water. Instead the undissolved yeast is added with part of the dry ingredients. Milk, water and margarine are heated over low heat until very warm (120° F. - 130° F.). The margarine does not need to melt. After two minutes of beating, three eggs go into the batter, followed by an additional two minutes of beating with an electric mixer before the last of the flour is stirred in. Kneading the dough requires 8 to 10 minutes.



While the dough rises, hard cook 8 eggs to be inserted when shaping the dough. The eggs may be dyed with vegetable coloring. They are peeled and eaten with the bread for Easter breakfast.

## PORTUGUESE SWEET BREAD

Makes 8 individual breads

6 1/2 to 7 1/2 cups unsifted flour

1 cup sugar

1 teaspoon salt

2 packages Fleischmann's Active Dry Yeast

1 cup milk

1/4 cup water

1/4 cup (1/2 stick) Fleischmann's Margarine

3 eggs (at room temperature)

8 hard-cooked eggs

In a large bowl thoroughly mix 2 cups flour, sugar, salt and undissolved Fleischmann's Active Dry Yeast.

Combine milk, water and Fleischmann's Margarine in a saucepan. Heat over low heat until liquids are very warm (120° F. - 130° F.).

Margarine does not need to melt. Gradually add to dry ingredients and beat 2 minutes at medium speed of electric mixer, scraping bowl

occasionally. Add 3 eggs and 3/4 cup flour. Beat at high speed 2 minutes, scraping bowl occasionally. Stir in enough additional flour to make a soft dough. Turn out onto lightly floured board; knead until smooth and elastic, about 8 to 10 minutes. Place in bowl, turning to grease top. Cover; let rise in warm place, free from draft, until doubled in bulk, about 1 hour.

Punch dough down; turn out onto lightly floured board. Divide dough into 8 equal pieces. Take about 1/4 of each piece and set aside. Shape larger pieces into round balls. On greased baking sheets, press large pieces of dough down into circles, about 1/2-inch thick. Place a hard-cooked egg in center of each. Divide each of the remaining 8 pieces of dough in half. Shape each into a 6-inch rope. Using 2 ropes, cross in an "X" over each egg and seal ends underneath dough. Cover; let rise in warm place, free from draft, until doubled in bulk, about 1 hour.

Bake at 350° F. 20 to 25 minutes, or until done. Remove from baking sheets and cool on wire racks.

**DRESSES TO MAKE YOU THINK SPRING**

**THE MODERN MISS SHOP**

7 Chambersburg St. Gettysburg, Pa.

**SPRING TIME AT THE SHOE BOX**

GETTYSBURG, PA.

**LADY FLORSHEIM AIR STEP CALIFORNIA COBBLERS RISQUE OLD MAINE TROTTERS CLINICS LAZY BONES FLEET AIR**

FOR YOUR SHOPPING PLEASURE OPEN FRI. AND MON. 9 to 9

You're Invited To Our ...

# SPRING OPENING

**FREE \$50.00 WARDROBES**  
Win a Free \$50.00 Wardrobe ...  
2 Lucky Ladies will each win a \$50.00 Wardrobe for Spring. Come in and register ... no purchase necessary ... Drawing April 15th.

Come! Share in the Excitement of Our **NEW-SEASON FASHIONS FOR SPRING-EASTER**

Let us help you put Spring into your heart and wardrobe. It's fun... It's exciting... choosing from these "New-Season" Fashions... selected "ESPECIALLY FOR YOU."

BEAUTIFUL COATS, RAINWEAR AND PANT COATS... Misses... Juniors... Half-Sizes.

DRESSES ARE BACK! and prettier than ever... JACKET DRESSES... COAT WITH DRESS ENSEMBLES... in soft and flattering styles. Misses... Juniors... and Half-Sizes.

PANTS SUITS with that new easy look...

LONG DRESSES... PROM FORMALS... with that special look of elegance

SPORTSWEAR THAT IS "JUST GREAT." Create your own special looks from these smart groups of blazers, slacks, vests, skirts, blouses.

ACCESSORIES to accent and complete your SPRING WARDROBE... Jewelry, Handbags, Gloves, Scarves.

LINGERIE AND LOUNGEWEAR, TOO!

Use Our Tobeycharge... BankAmericard or Master Charge... LAYAWAYS TOO

"WE HAVE A LITTLE SPRING GIFT FOR YOU..."

When You Buy a Coat or Pant Coat, You May Choose a Brandy Scarf to Wear With It... From a Just-Arrived Colorful Spring Group.

**TOBEY'S**

80 Baltimore Street Gettysburg, Pa.

"Free Parking While Shopping Tobey's"



## CONSUMER



## THREE-WAY PROTECTION



Is protective packaging important to the consumer? Most Americans never really think about it, but something you hardly ever look at helps to protect your health, money and environment.

That something is the flexible packaging that goes around your food.

It protects your health by protecting the food you eat. Food that is wrapped stays fresher longer and can't get dirty or be handled. Packaging keeps moisture in or out, and, when used as an inner liner for cereal, cracker or cake mix packages helps prevent staleness.

It protects your money by reducing spoilage and labor

costs, which saves the storekeepers money they can pass on to you. Since pre-packaged food keeps better, it helps you get more for your money.

It protects the environment after you finish with it and throw it away. That trash is often burned, and the heat produced can be used to run electrical generators and help conserve America's valuable fossil fuels and clean water. The wrappers that go around your food produce more heat and therefore more energy than most other kinds of "waste."

To wrap it all up, flexible packaging can clearly seem to be one of the three good things packaged as one!

### Why YOU Need a Smoke Detection Alarm by NuTone:

- 1) 70% of fire fatalities are due to smoke inhalation!
- 2) Every hour fires destroy or damage 67 American homes!
- 3) Every day, 33 persons—usually the young and elderly—die in a fire!
- 4) PROTECTION COSTS ONLY \$59.90

## REAVES ELECTRIC CO.

W. Main St. Phone 447-2497 Emmitsburg

## Beer Wine Whiskey

You'll Find Everything For That Party Right Here On Our Shelves

## Village Liquors

Ralph F. Irelan, Prop

"Always in the Best of Spirits"

Phone 447-2922

Emmitsburg, Md.

Sure Sign of Value—

A-1

USED CARS

## ALWAYS GOOD VALUES

- 1973 Ford Gran Torino 4-Dr.; Air; P.S.; V-8.
- 1972 Chevrolet Impala 2-Dr. H.T.; Very Clean.
- 1972 Chevrolet Vega 2-Dr.; 4 Cyl.; S.S.; R&H.
- 1972 Maverick 2-Dr.; 6 Cyl.; Auto.; R&H.
- 1971 Ford LTD 4-Dr. H.T.; Fully Equipped;
- 1970 Ford XL Conv.; Very Clean.
- 1969 Ford Country Sedan Wagon; R&H; Auto.
- 1969 Ford F250 3/4-Ton Pickup.
- 1969 Fairlane 500 4-Dr.; 6 Cyl.; S.S.; R&H.
- 1966 Chevrolet Impala 2-Dr. H.T.

## Sperry's Ford Sales, Inc.

PHONE 447-6171

EMMITSBURG, MD.

## BUSINESS AND THE STOCK MARKET

### Organized Labor's Political Leverage

By Babson's Reports Inc., Wellesley Hills, Mass., March 20, 1975—The extra political clout given AFL-CIO President George Meany as a result of labor's support at the polls last fall of an unusually large number of successful pro-labor candidates may conceivably have given him too much confidence. While he is admittedly the voice of American labor, some of his recent pronouncements seem to be

little more than personal opinions of the moment. And some of his devoted adherents are sufficiently put off by his inconsistencies to ignore his statements and stick to their guns on basic issues.

Last month Meany declared that he was disengaging the Federation from Democratic party politics. Some thought the explosive suddenness of his decision was merely to cover up the fact that he had failed to follow through with his promise of last December to

remove from the Democratic National Committee the nine AFL-CIO members still located there. Others felt he might be clearing the way for support of his favored friend Vice President Nelson Rockefeller in case he should win the Republican presidential nomination, a move that most of Meany's labor conferees hardly expect to happen.

### Viewed Doubtfully From Within

Whatever his motives, many Federation allies — some in top positions — are not instantly coming to heel when he calls. The sharpest schism is a result of Meany's abrupt withdrawal of his favor from Senator Henry "Scoop" Jackson of Washington who is panting hard for the Democratic presidential nomination in 1976. Previously Jackson was the fair-haired boy of the Federation's chief executive and the latter's reversal came as a surprise. Meany somewhat vaguely accused Jackson of doublecrossing him on trade legislation.

Sticking with Jackson despite Meany's condemnation are a number of presidents of unions within the Federation as well as some old-time Meany buddies in the building trades. President Edward Carrough Jr. of the Sheet Metal Workers did not hesitate to state publicly his disagreement with Meany on the Jackson issue, along with officials in the International Brotherhood of Electrical Workers, the machinists' union, and the operating engineers' union.

### Choosing An Heir

While these developments indicate a growing isolation from his closest associates, they do not suggest Meany is planning early retirement. He is apparently still in good health and spirits, and his regular schedule might well exhaust a far younger man. But there remains much speculation over his successor, particularly since labor faces innumerable acute problems as the recession and unemployment daily become more disabling to the economy.

Insiders think there's a good chance that Meany's eventual heir will be Lane Kirkland, secretary-treasurer and second in command of the AFL-CIO. His name is little known outside union circles and he has no grass-roots base in a national union affiliate. His connection was originally with the Master Mates and Pilots Union, a rather small unit within the Federation. He is a prime prospect, however, be-

## ENERGY AND RESOURCES U.S. ECONOMY NEEDS

Americans rightly concerned about the energy crisis can find some solace in the fact that Canada, our friendly neighbor to the north, is not only rich in energy but also natural resources.

Most Americans are aware of Alberta's abundant oil fields. But almost overnight, another Canadian province 3000 miles to the east, is edging into North America's center stage as a potential source of energy.

That province is Newfoundland, first discovered by the Norsemen a thousand years ago and later a pleasant surprise for thousands of American GI's stationed there during World War II.

Newfoundland is three times the size of New York State. This most easterly Canadian province is located 1000 miles northeast of Wall Street, smack at the mouth of the Gulf of St. Lawrence.

Wall Street's financial wizards who advise America's "blue chip" corporations are suddenly discovering that Newfoundland is ripe for development. The province has the energy potential and vital natural resources which the American economy will be needing in the last quarter of the 20th Century. There are many ice free deep water ports. And the welcome mat seems to be out to U.S. investors. According to Newfoundland's Premier, dynamic Frank Duff Moores:

"We are talking with multinational companies all over the world but we have a special affection and admiration for our American neighbors."

There is good reason for U.S. corporations to be interested in Newfoundland. One of them is energy, the word the Arab world has

magnified a thousand times. Already Newfoundland boasts of the world's largest underground hydro power plant at Churchill Falls. But there is more to come.

Said Premier Moores recently:

"We have in Newfoundland the potential equivalent of an oil field that can produce 76 million barrels of oil a year—forever."

The 43 year old Premier who got his start working on the Boston fish docks was referring to Newfoundland's remaining fabulous hydro power potential. It is truly staggering. Consider, for example, that on the warmest summer day, the New York City area consumes 7500 megawatts of electricity.

In contrast, Newfoundland's untapped hydro power potential is an amazing 10,000 megawatts.

But that is only scratching the surface. Newfoundland and Labrador have 52 per cent of Canada's iron ore reserves, 25 per cent of off-shore oil reserves, and 23 million acres of rich timber lands.

American industry is looking for pulp and paper and Newfoundland boasts 23 million acres of productive forest land, roughly equivalent to a forest covering the states of Massachusetts, New Jersey, New Hampshire, Connecticut, and Hawaii combined," Premier Moores said.

There's more than iron ore in Newfoundland. This beautiful province which draws thousands of American tourists every year has ample reserves of lead, zinc, copper, fluorspar and asbestos. Uranium, limestone and barite remain to be tapped by enterprising American companies.

Full details on investment opportunities can be obtained by writing to Dept. DCI, "Newfoundland Adventure," Suite 901, 20 East 46 Street, New York City 10017.

## PUBLIC SALE

SATURDAY, APRIL 5, 1975

9:30 O'Clock

FARM MACHINERY - CATTLE - HOUSEHOLD

Located 4 miles from Taneytown on Frederick Road or Route 194, right on Keyville & Bruceville Rd. to Keyville & Frederick Co. Rd. to Y, turn right, second farm, or 5 miles from Taneytown on Emmitsburg Rd. or Route 97 to Toms Creek Church Rd., left, then right to Keyville Rd., farm on left.

### FARM MACHINERY

Farmall Super M tractor; Farmall H tractor; 8n Ford tractor; 206 New Idea manure spreader, International 10 hole disc drill; spring tooth harrow; 2 28" disc harrow; International 1 row corn picker; New Idea steel wheel rake; 3 section weeder; 12" bottom pull type wheel; cultipacker; 2 wagons, one on rubber, one steel wheel; 2 A.C. combines; corn workers for H; hay & grain elevator; hammer mill; one row walking corn plow; 66 New Holland hay baler; New Holland 7 ft. mower; M.C. 2 row corn planter; barshear plow; shovel plow; 3 shovel drag; corn sheller; forks, shovels; log chains; small tools; block & fall; single trees; old horn; horse collars hames, repairs for combine; bolts! old iron; riding lawn mower; 2 rotary lawn mowers; chicken equipment; McCulloch chain saw; aluminum gate; barb wire; horse driving sled; horse shoes; 2 wheel barrows; milk cans; 2 gal. milk cans; stable heat lamps; timothy seed; cylinder oil; stillard scales; feed boxes; butcher kettles; grinder; sausage stuffer; ladder; copper apple kettle; wood peck & bushel measure; 55002-02 water softener.

### HOUSEHOLD GOODS

Child's roll top desk; old time high chair; wood & glass churn; solid bottom chair; straight chairs; rocker; porch swing; swing set; glass front corner cupboard; oak beds & dressers; bedroom suite; other old pieces of bedroom furniture; Monogram 5-room oil heater; 2 round oak tables, one Ext.; deep freeze; knee hole desk; oak hall rack with mirror; blanket chest; breakfast set; Kenmore washer; bench & stands; 2 oak wardrobes, one solid end; utility cabinet; china closet; electric stove; Home Comfort cook stove; rugs, quilts; linens; cherry seeder; crocks; jugs; jars, some green; white milk glass; wash bowl & pitcher; parlor iron stove; lots of other dishes, pots and pans; see the fancy table; other items too numerous to mention.

### CATTLE AND FEED

4 steers, 300 lb. average; 2 heifers, 300 lb. average. Hay & straw left day of sale.

TERMS: Cash day of sale.

Mr. & Mrs. Carroll B. Phillips

Four Points Rd., Emmitsburg, Md.

Not responsible for accidents — Lunch rights reserved

GUS SHANK, Auctioneer  
HARRY DOUGHERTY, Jr., Clerk



## OPEN LINE

By Congressman Goodloe Byron Maryland—Sixth District

The following questions were typical of the kind asked of me in recent weeks. Letters should be sent to me, c/o U. S. House of Representatives, Washington, D.C. 20515.

### What is Congress doing about easing the unemployment situation?

The House is currently considering a bill that would stimulate the creation of more than 900,000 jobs directly and perhaps as many indirectly. Action on the measure is expected this month.

According to your recent survey, in what areas are people willing to cut down on government spending?

The majority of citizens responding to my questionnaire want to see spending reductions for foreign aid, the space program, agricultural subsidies and welfare programs. Less than 10 per cent want to see cuts in social security, medical care, veterans benefits and energy research programs.

Do you have any information on the Veterans Health Bill that Congress approved last year?

Copies of Public Law 93-82, "Veterans' Health Care Expansion Act", may be ordered from my office in Washington.

Why did the Environmental Protection Agency extend the

cause Meany seems to have made him his own personal choice. Kirkland is being delegated to significant commissions, currently including the Rockefeller panel to probe into the CIA, and is also being assigned to major legislative and speaking duties. He is considered a capable administrator, and his prospects have been substantially improved by I. W. Abel's decision to retire from his United Steelworkers (and active union work) when his term expires in 1977.

This is not to say that Kirkland is the sole possibility. Mr. Abel's retirement could well bring some dark horses nearer the starting post, including President John Lyons of the Bridge, Structural & Ornamental Iron Workers. As of now, however, Lane Kirkland appears to be far and away the frontrunner when Meany steps down.

## Peanuts Pack



### Protein Power

WHAT A NUT!

If you're like most Americans, you eat about eight pounds of peanuts, in various forms, every year, yet probably know very little about them.

For one thing, they're not really nuts at all, but legumes like peas or beans. For another, peanuts are approximately 26 percent protein (twice that of frankfurters), high in niacin, thiamin and phosphates and



relatively low in saturated fats. Inexpensive to buy, peanuts are one of the six basic American farm crops valued at over \$400 million.

People usually think of peanuts as a snack food, but you can eat them in one form or other for breakfast, lunch and dinner. You even can drink them: blend a small banana, 1/4 cup smooth peanut butter, 1/2 pint vanilla ice cream and 1 cup milk until smooth for two servings of a real go-go breakfast drink. At lunch time, spread toasted English muffins with peanut butter, lay strips of prepared bacon across the top and serve with soup. For dinner, make crispy, crunchy hamburgers by pressing each patty into a bowl of finely chopped peanuts until covered and then broil.

Originally grown in South America, the protein-rich peanut came here by way of Africa, where they had been traded by the Spanish explorers. It took the Civil War to get peanuts out of the slave quarters and into the pockets of Union soldiers. The boll weevil played its part, too. Cotton crop failures led southern farmers to plant peanuts. The rest is history.

A nutty story? You bet — nutty but nice for all Americans who now can enjoy this super food in their daily diets.

band at home. Please explain.

Medicare does not cover custodial care. Care is considered custodial when it is primarily for the purpose of meeting personal needs and could be provided by persons without professional skills or training.

Should natural gas be de-regulated?

According to a four-year study by the Federal Power Commission, which is the agency responsible for control of natural gas production and pricing, there is "little hope for easing shortages with substantial changes in the existing system of government controls over natural gas prices."

The report indicates deregulation would mean an increase in the prices which the consumer pays for the fuel but indicates that the alternatives would be a long-term shortage which will force consumers to convert to another fuel. Congress has yet to consider this measure.



LIVE RABBITS

AT

## OUTDOOR OUTFITTERS

THURMONT, MARYLAND

## PUBLIC SALE

SATURDAY, APRIL 5, 1975

STARTING AT 11:00 A.M.

The undersigned having public sale at Emmitsburg, R1, Maryland, near Mt. St. Mary's College, will sell the following:

Two-door Frigidaire refrigerator; Frigidaire electric stove; Blackstone wringer-washer; Several metal cabinets, all sizes; two-piece living room suite; bedroom suite with mattress and spring; desk and chair; metal wardrobe; record player; dressers; treadle sewing machine; old horse saddle; baskets; twin rinse tubs; built-in electric oven and top range; 24 ft. trailer (completely furnished); large picnic table and benches; 1964 Buick Wildcat, in running condition; large amount of Christmas items, large and small, including Santa and reindeer and mechanical Christmas decorations; collection of several hundred Avon bottles; iron wheels; miscellaneous iron pipes; tools; porch swing; bottles; dishes; 7' x 8' building.

Also one registered 200 lb. White Hampshire boar; 2 White Hampshire sows that will have pigs on or before day of sale. Numerous items, large and small, not listed.

TERMS: Cash. Not responsible for accidents.

EARL HILBERT, Owner

Ralph Schuchart, Norman Dickensheets, Auctioneers  
Mae Miller, Clerk

# What price security?

When you join the Payroll Savings Plan, all it takes is a little pinch out of your paycheck. Any amount you specify. Money that'll be set aside each payday to buy U.S. Savings Bonds. You'll hardly miss it. And neither will your paycheck. Join Payroll Savings now. Where else could you get the future at a bargain rate?

Now U.S. Bonds pay 6% interest when held to maturity of 6 years (4% the first year). Bonds are replaced if lost, stolen or destroyed. When needed, they can be cashed at your bank. Interest is not subject to state or local income taxes, and federal tax may be deferred until redemption.



Take stock in America.

Join the Payroll Savings Plan.



## LOOKING AHEAD

By George S. Benson, President, National Education Program

Searcy, Arkansas

### Detente And Self Preservation

It has become obvious to the free world that while Russia talks about "Detente" and limiting the arms race, the Communists are busily engaged in enlarging their military capacity in every respect. There is not the slightest indication to contradict the fact that Russia through the importation of free world computer technology, integrated circuitry, and other sophisticated technology, is moving rapidly toward the goal of absolute world-wide military supremacy.

### Inspite of Detente

"Detente does not mean that the Russians have had a change of heart" (Charles Colby, Director of the CIA). "Detente does not mean that the Russians have changed their objective" (Secretary of Defense Schlesinger). Secretary of Research and Development for the Armed Forces, testi-

fied before the House Armed Services Committee with these words: "Detente means that the Russians are going after our technology."

Bolstering this evaluation of Soviet intent are these words of Communist Party Secretary, Leonid Brezhnev, in a recent speech to the leaders of the Warsaw Pact nations: "We Communists have got to string along with the capitalists for awhile. We need their agriculture and their technology. But we are going to continue massive military programs and by the middle 80's, we will be in a position to return to a much more aggressive foreign policy designed to gain the upper hand in our relationship with the West."

Many voices, including Alexander Solzhenitsyn and Andrei Sakharov have warned that providing the technical means by which the Soviets could build their military industrial complex only encourages the Communists to both repress their own people and pursue their world-wide objective of total domination.

Avarham Shifrin, former Soviet Red Army Major and Chief Legal Advisor, Contracts Division, Ministry of War Equipment, U.S.S.R., now turned to the West, told a House sub-committee: "Each day I say how the U.S.S.R. used the technical achievements of the U.S. and other Western nations to create weapons for the destruction of those same nations. I heard many discussions of how to cheat the U.S. out of strategic military equipment."

"The U.S.S.R. has obtained U.S. materials for supersonic aviation, for the earliest Soviet missiles, and for building the first aerodynamic wind tunnels for testing models of supersonic military aircraft. "Foreign tools are bought only when the Soviet attempt to copy, fails. In such a way, there was "bought" in England a complex of machines for production of very high temperatures. It played a crucial role in production of the Soviet H-bomb."

It is the Congress that is charged with the Constitutional responsibility of regulating foreign commerce. Yet, Administration of the Export Control Act has been delegated to the Secretary of Commerce with slight interference from Congress. The Export-Import Bank is prohibited by law from lending money to Communist countries, save "when the President determines it is in the national interest to do so."

The technological drain from the West to Communist countries has become a torrent under the present law and arrangements. The free world cannot permit the short-sighted desire for quick profits or a paper balance in our balance of trade to destroy our national security. America cannot continue to sell the Communists the rope with which

they propose to hang us. The present system does not fulfill the constitutional requirement that Congress regulate foreign trade. While it is true that export licenses are published and that Congress is informed of those transactions on a quarterly basis, all that information comes to the Congress after the fact. Even the Secretary of Commerce does not know what is going on before the fact in every case.

While the desire of the free world is to live in peace with all our neighbors, so long as they remain good neighbors, the desire of the Soviet Union

in expanding trade with the free world is not the same. Our CIA reports that in 1973, the Soviet Union spent approximately \$80 billion on its military. That was more than the United States spent by several billion dollars. Present plans call for the Soviet military budget to rise to \$93 billion by 1975. That's their direction . . . military superiority . . . and our best intelligence reports . . . "Detente does not mean the Soviets have changed their goals."



Some people say that a lion will not attack a true prince.

### Stuffed 'Pets' Don't Cry



Don't give your children baby rabbits, chicks or ducks for Easter, urges the American Veterinary Medical Association (AVMA). Not only is it cruel to give these animals as gifts, in many states and cities it is illegal.

Rabbits, chickens and ducks are farm animals; they rarely survive in the home. A young child's enthusiasm over the new pet often results in unknown cruelty as legs are broken and wings crushed. If the animal dies or is injured, it is a traumatic experience for the child. If the animal survives, it generally ends up in an animal shelter.

Because so many thoughtless people continue to give baby rabbits, chicks and ducks as gifts, shelters are unable to handle them and most have to be destroyed. Even if the animal should live to maturity, many local ordinances would prohibit a family from keeping it.

These are outdoor animals. They can not be housebroken and may cause serious house-keeping and health problems. Many are disease carriers. The National Center for Disease Control in Atlanta and other public health authorities warn that children and adults in close contact with these animals may be exposed to salmonellosis, a severe gastro-intestinal infection. While the disease is rarely fatal, it requires medical treatment, often including hospitalization. In addition to the family, other pets in the household may become ill.

Because of the problems surrounding Easter "Pets," the AVMA suggests that you give youngsters stuffed toys instead.

Easter and the coming of spring should be a time of joy and rebirth, not a period of physical illness, psychological trauma and the needless deaths of young animals.

## FUEL SAVING TIPS

- 1 Watch steam boiler water level. A boiler usually operates best if level is at center of gauge.
- 2 Keep water in heating boiler clean for faster, more efficient operation.
- 3 Avoid overheating furnace, it wastes fuel.
- 4 Drain a pail of water directly from domestic hot water tank monthly to insure efficiency.
- 5 Check and repair leaky hot water faucets (a leak of only one drop per second means a loss of 700 gallons a year).

## C. F. STOUTER OIL CO. INC.

EMMITSBURG, MD. 21727

Telephone: (301) 447-2118

### LOOKING FOR A GOOD USED CAR?



- 1974 Mustang II; 4-Speed Man. Trans.; 8,000 Miles; Radial Tires.
- 1974 Mercury Montego MX 4-Dr.; V-8; Auto. Trans.; P.S.; Power Brakes; A-C; Like New.
- 1973 Ford Grand Torino Squire Wagon; 9-Passenger; AC; R&H; PS; Power Brakes.
- 1973 Ford Maverick 2-Dr. Sdn.; 6-Cyl.; Auto. Trans.; 10,000 Miles.
- 1973 Grand Torino Sport Coupe; V-8; Auto. Trans.; P.S.; Air-Conditioning; Low Mileage.
- 1972 Ford Maverick 6 Cyl.; Standard Transmission; R&H; Good Economy Car.
- 1972 Matador 4-Dr. Sedan; 6 Cyl.; Auto.; R&H
- 1971 Ambassador 4-Dr. Sedan; V-8; Auto. Trans.; PS.
- 1968 Chevrolet Belair 2-Dr. Sdn.; V-8; Auto. Trans.; PS.

COMPLETE LINE ALLCAR AUTO PARTS  
BATTERIES & TIRES

## SANDERS GARAGE

AUTO SALES & SERVICE  
PHONE 447-6151 EMMITSBURG, MARYLAND

## PERSPECTIVES IN LEARNING

By Hazel Brown, President  
Harry Lundeberg School  
Continuing Education—  
A Must

Modernization and technological change has caused man to increasingly seek educational experiences which will prepare him adequately for the world of work. As changes within occupations occur, men are required to be retrained several times during their working lives.

There is no way that any school system can adequately train youngsters for jobs 10 or 20 years from now. The times change and so do the skills needed for achieving success at an occupation. What is presently relevant may be of little use five years from today.

This ever-changing world of work makes it necessary for schools to have flexible curricula so that changes can take place as scientific technology changes. As changes occur in industry, they must be reflected in the updating of course content, vocational counseling, and education experiences.

Flexibility in the length of education and training programs must exist so that schooling can be a part of the world of work. Men must feel that they can return to school

to learn new skills whenever the need arises.

Continuing education has to become an accepted way of life. No one can leave high school or a training program feeling he has completed his formal education. At the existing rate of change, a high school graduate will return to school for retraining at least three or four times during his life of work.

Learning to accept the need for readjustment in the world of work is a necessary part of educational experiences today. Our young people must understand that relevancy is only of the hour. As technology changes, so do the duties of any occupation. An outstanding electrician today may be "out of step" tomorrow.

The key to preparing for the world of work is to learn to accept change and be willing to continually seek educational experiences.



Calling someone "bald as a coot" is to compare him to the bald coot of Europe, an aquatic bird whose bill extends well up its forehead.

## A SOUP TO COME HOME TO



The word homemade evokes fond memories in most of us—memories of Mom, apple pie and the other good things which came from her kitchen. In winter, she knew there was nothing better than a warming soup to come home to. Now we don't often take the time for made-from-scratch soups. Here's a soup recipe that's so easy there's no reason not to make it. The creamy soup gets its delicious flavor from a blending of mixed vegetables—peas, carrots, corn, lima and green beans. Serve with PREMIUM SALTINE Crackers which have been a favorite since they won a prize at a county fair back in 1876.

### CREAMY MIXED VEGETABLE SOUP

- 2 tablespoons butter or margarine
- 1 medium onion, sliced
- 1 (10-ounce) package frozen mixed vegetables, thawed
- 2 tablespoons all-purpose flour
- 1 3/4 cups water
- 1 1/2 cups milk
- 3 chicken bouillon cubes
- 1/4 teaspoon garlic powder
- Few dashes ground nutmeg
- Snipped parsley
- PREMIUM Saltine Crackers

In saucepan melt butter or margarine; add onion and sauté until golden. Stir in vegetables and sauté a few minutes. Stir in flour; then next five ingredients. Bring to boil; then simmer, covered, about 15 minutes, or until vegetables are tender. Blend in electric blender until smooth. Sprinkle with parsley and serve with PREMIUM Saltine Crackers. Makes 6 (about 2/3 cup) servings.

## Emmitsburg Chronicle

Established 1879  
Successor to the Emmitsburg Banner, Established 1840  
EMMITSBURG, FREDERICK COUNTY, MARYLAND  
Published weekly on Thursday by COLONIAL NEWSPAPERS INC., 107 South Seton Avenue, Emmitsburg, Maryland 21727. Telephone 801-447-2333

ROBERT B. WENTWORTH, PUBLISHER  
ED PUHL, EDITOR

Copy for Advertisements must be received in this Office not later than Tuesday morning to insure publication in the current week's edition. Advertising rates furnished upon request. Subscription rate, \$4.00 per year in advance. All Communications and Checks intended for this Paper should be addressed and made payable to EMMITSBURG CHRONICLE, Emmitsburg, Maryland 21727.

Entered as Second Class Matter at the Postoffice at Emmitsburg, Md., under the Congressional Act of March 3, 1879.

Member  
**NATIONAL PAPER** Maryland-Delaware-D.C.  
Association - Founded 1908 Press Association Inc.

## TRIUMPHS OF TRANSPORTATION

### HOW OUR TRUCKS HELP US

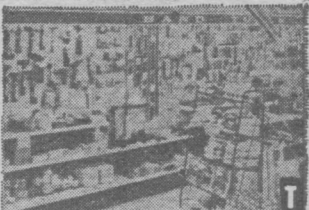
Every store in town is stocked with merchandise brought by truck, rolling by day and night to see that the products we want are handy when we want them.

Trucks get the call because they can go anywhere there's a road. Unlike boats, trains, or planes, trucks have no physical limitations on where they can haul goods. The most remote spot in America can be reached by truck.

Without the economical, reliable transportation supplied by trucks, most goods would be available only in the areas where they were produced. What would be the purpose of mass producing a product, if there were no way to move it profitably into the market place?

So the motor carriers, with their automobile transports, tank trucks, "semi's" and "twin trailers" all play an essential part in America's economy. And the trucking industry is working hard to maintain pace with that

economy: increasing operational efficiency to the maximum under existing laws; constantly improving safety; and maintaining round-the-clock schedules.



The hand tools like those above are made handy by trucks like those below.



The trucking industry is an important part of the good life in our country. Their record isn't perfect. No one's is. But they're working 24 hours a day to improve it.

## ALBERT F. WIVELL & SONS

CONTRACTOR

Custom Homes Swimming Pools  
Remodeling Sales and Service  
Excavation Call 447-2218

## GET A DEAL ON THE 1975 CHEVROLET

And On OK Used Cars & Chevrolet Trucks

## WANTZ CHEVROLET INC.

Phone 756-6006 Taneytown, Md.

### COMPLETE AUTO AND BODY REPAIR

Service Department Hours  
7:30 A.M.—5:00 P.M., MONDAY—FRIDAY  
5:30 P.M.—9:00 P.M., THURSDAY EVENING

Sales Department Hours  
9:00 A.M.—9:00 P.M., MONDAY—FRIDAY  
9:00 A.M.—4:00 P.M., SATURDAY

**NOW IS THE TIME FOR YOU TO RELAX**  
*Eat Out With The Family!*  
**VISIT YOUR FAVORITE AREA RESTAURANT**  
For a Special Meal and Beverage



## The Palms Restaurant

EMMITSBURG, MARYLAND

### HOME COOKING OUR SPECIALTY

Dinners Daily Specials

Homemade Soups

Pizza - Sandwiches - Subs

CHICKEN - SOFT SHELLS

SPAGHETTI

—Carry-Out Service—

We Serve Your Favorite Beer and Wine

HOURS: 6:30 A.M. - 11 P.M. Daily

—Closed Sunday—

## THE PALMS RESTAURANT

Emmitsburg, Md. Phone 447-2303, 447-2991

## Rolando Woods Inn

Rt. 16 East of Waynesboro  
At Blue Ridge Shmitt

Now Open From 8:00 A.M.  
Seven Days A Week With  
Full Beverage Services

Good Food Prepared In  
Unique, Pleasing Fashion

Reservations Will Make  
Your Visit More Pleasant  
Phone 794-2765

Weekend Entertainment

### SOUP And SANDWICHES

FOUNTAIN

Sundries - Magazines

## FAIRFIELD CUT RATE

Fairfield, Pa. 17320



Indian lamas say that the earth is placed on the back of a gigantic frog whose movements cause earthquakes.

### DR. R. P. KLINGER, JR.

Optometrist

19 East Main Street  
EMMITSBURG, MD.

Yes Examined-Glasses Fitted  
Complete Optical Repairs

HOURS  
MONDAY: 6:30 to 8:30 p.m.  
Other Evenings By Appointment

PHONE  
WESTMINSTER TI 8-8340

## CODORI MEMORIALS

Rock of Ages  
Monuments, Markers  
Mausoleums

Cemetery Lettering & Cleaning  
400 W. Middle St., Gettysburg  
Phone 717-334-1413

## WILSON

Funeral Home

EMMITSBURG, MD.

Phones:

Emmitsburg 447-6244

Fairfield 642-8642

## "FEEDER" CATTLE

EVERY  
Tuesday  
IS A

### Feeder Sale

Due to the large response to "Special" Feeder Sales last spring, every week will be a feeder sale.

All types and sizes. Lots of local cattle right off the farm. Cattle sold in order received.

### EVENING SALE

FOR YOUR CONVENIENCE

AT

Westminster

### Livestock Auction

For a dependable trucker

Call 848-9820

Westminster, Md.





FOR SALE—Lawn mowers & garden tillers at Emmitsburg Feed & Farm Supply, E. Main St., Emmitsburg.

FOR SALE—Garden seeds & supplies. Emmitsburg Feed and Farm Supply, E. Main St., Emmitsburg.

CARD PARTY — Benefit St. Anthony's Shrine, Wednesday, April 9 at 8 p.m. Beautiful prizes. Refreshments on sale. Admission 50c. 3/20/75

FOR SALE—Red Clover seed, home grown. J. E. Baker, phone 447-2870. 3/20/75

TITLE & TAG SERVICE  
Myer's Shell Station  
Thurmont, Md.  
Phone 271-2747  
2/10/76

FRUIT TREES, Nut Trees, Berry Plants, Grape Vines, Landscaping Plant Material — offered by Virginia's largest growers. Free copy 40-page Planting Guide-Catalog in color, on request. Waynesboro Nurseries, Waynesboro, Virginia 22980. 3/6/76

WORK WANTED—The Boy Scouts are still available to do odd jobs. Call 447-6236 anytime.

The Best Used Cars are Found Where the Best Used Cars are Sold.

William (Bill) Sentz  
Fairfield Rd.  
Gettysburg, Pa.  
Phone 717-642-5603

**WANTED REAL ESTATE**  
**Luther N. Martin**  
**Agency**  
**H. Kenneth Seifert**  
**Salesman**  
**BLUE RIDGE SUMMIT**  
**PENNSYLVANIA**  
**Phone 717-794-2441**

FOR SALE — Siegler space furnace complete with thermostat, blower and 275 gal. tank. Call 301-241-3291, or write to P.O. Box 36, Emmitsburg, Md. 21727. tf

FOR RENT—Commercial garage suitable for 6-car operation, parking in rear. Ideal for car repairing and/or sales. Available March 1. Call 301-241-3291, or write to P.O. Box 36, Emmitsburg, Md. 21727. tf

START your child right on the magic road of music. Get the BEST piano you can afford. Menchey Music Service, 1100 Carlisle St., Hanover, has pre-selected for you the best instruments, in every price range, at terms to fit your budget. For guaranteed satisfaction, buy and save with confidence from Menchey Music Service.

ZENTZ AUTO SALES  
Where the nice ones are!  
Serving You Since 1943  
Carlisle St., Gettysburg, Pa.  
Open 9-9 Daily

CUSTOM SLAUGHTERING & PROCESSING OF BEEF Cut and wrapped for the freezer to your specifications.  
**NORMAN SHRIVER, JR.**  
Phone 447-2255 - Emmitsburg  
We sell beef by half or quarters

AWNINGS

CAR PORTS

PATIO COVERS

PORCH ENCLOSURES

FIBERGLASS AWNING CO.

140 E. Middle St.  
Gettysburg, Pa. - Ph. 384-4612

**RONALD J. SHORB**

**Ceramic Tile**

**Contractor**

Baths-Kitchens-Flagstone

Wall-to-Wall Carpet

Armstrong Floor Covering

Free Estimates

Phone 271-7252

Thurmont, Md.

PRINTING  
ALL KINDS  
Also  
Plastic Signs  
Wedding Invitations  
RUBBER STAMPS  
FAST SERVICE

CHRONICLE PRESS INC.  
447-2333 Emmitsburg, Md.

#### CARD OF THANKS

The family of Alice Balmer wish to thank all friends and relatives for their Masses, flowers, cards, and acts of kindness shown during our bereavement.

CB Radios—Monitors  
Sales & Service  
Phone 384-7939  
EKDAHL'S  
Camper Supplies  
Gettysburg, Pa.  
3/20/75

FOR SALE — 19" color TV, portable, \$50.00. Also 1969 Chev. pickup truck, 6 cylinder. Phone 447-2871. 1tp

#### CARD OF THANKS

I wish to thank my friends and neighbors for all their kindness, and nice things they did for me while I was ill with pneumonia, and special thanks to Dr. Cadle. Also special thanks to Mr. and Mrs. Charles Hess for caring for me at their home while I was ill. God bless them all.

Margaret R. Alexander

FOR SALE — '69 Plymouth Fury II, power brakes and steering, 4-door, cruismatics. Fine condition, new tires (2 snow). \$1,000. Call 447-2740 between 6 and 9 p.m. 3/20/75

FOR SALE—1971 Arrowglass 15 ft. boat with trailer and 50 hp. Johnson outboard motor. Phone Taneytown Bank and Trust Co., 756-2655. 3/20/75

NOTICE—Reserve this date! Saturday, May 3 from 3 to 9 p.m. We'll all be looking for you at the Mini-Bazaar sponsored by St. Joseph's High Athletic Association. A good time guaranteed! 1t

#### CARD OF THANKS

To our many friends, relatives and neighbors, no words can express our heartfelt thanks for all the kind words, beautiful cards, donations of food, telephonic calls and visits during the loss of our beloved wife and mother, Helen L. Wivell. To Dr. Morningstar, Father Sargus, Father Tomalski, and Father Keenan for their comfort in our sad bereavement, to the Emmitsburg Ambulance crew, the nurses at the Annie Warner Hospital, and to the Wilson Funeral Home for their services. May God bless each of you.

Roy J. Wivell & Children

NOTICE—Federal and State taxes prepared in your home. Phone 862-9100, ext. 298, or 447-6287. tf

#### ROOFING - SPOUTING

ALUMINUM SIDING

Over 20 Years Experience

**BILL ARENTZ**

Roofing Contractor

R.D. 2, Fairfield

Ph. 717-334-5696

#### AUTOS FOR SALE — Good

Credit? Assume payments on '69 New Yorker, '71 Ford Galaxie 500 Coupe, '69 Eldorado Coupe, '69 Lincoln Mark III, several others. Museum Village, Bus. Rt. 15N, Gettysburg. Evenings 6-9 except Thurs., Sat. 9-3. tf

#### Building plan.

Take stock in America.

Buy U.S. Savings Bonds.

THE IRISH ONCE BELIEVED THAT children and animals could be bewitched by a spirit that would rhyme them to death.

Smartness, rather than sincerity, ruins many speeches.

Neolithic Age 9,000 years ago, the Greeks and Romans, the early Christians, the Moslems and the Crusaders. It has snow-capped mountains for you to ski on and miles of beaches for you to swim from into the crystal-clear waters of the Aegean Sea, the Black, or the Mediterranean. It has charming fishing villages and modern cities with luxury hotels and swinging night clubs. It has bazaars where you can buy, at amazing prices, hand-embroidered silks, soft sheepskin coats, gleaming gold jewelry and ornaments, painstakingly wrought meerschaum pipes and a myriad of other beautiful, useful and unusual things. For more information about visiting this country, contact the Turkish Tourism and Information Office, 500 Fifth Avenue, New York, N.Y. 10036.

Sultan Ahmet Mosque, in Istanbul, is known as the "Blue Mosque" because its interior is covered with gleaming blue tiles.

Neolithic Age 9,000 years ago, the Greeks and Romans, the early Christians, the Moslems and the Crusaders. It has snow-capped mountains for you to ski on and miles of beaches for you to swim from into the crystal-clear waters of the Aegean Sea, the Black, or the Mediterranean. It has charming fishing villages and modern cities with luxury hotels and swinging night clubs. It has bazaars where you can buy, at amazing prices, hand-embroidered silks, soft sheepskin coats, gleaming gold jewelry and ornaments, painstakingly wrought meerschaum pipes and a myriad of other beautiful, useful and unusual things. For more information about visiting this country, contact the Turkish Tourism and Information Office, 500 Fifth Avenue, New York, N.Y. 10036.

Sultan Ahmet Mosque, in Istanbul, is known as the "Blue Mosque" because its interior is covered with gleaming blue tiles.

Neolithic Age 9,000 years ago, the Greeks and Romans, the early Christians, the Moslems and the Crusaders. It has snow-capped mountains for you to ski on and miles of beaches for you to swim from into the crystal-clear waters of the Aegean Sea, the Black, or the Mediterranean. It has charming fishing villages and modern cities with luxury hotels and swinging night clubs. It has bazaars where you can buy, at amazing prices, hand-embroidered silks, soft sheepskin coats, gleaming gold jewelry and ornaments, painstakingly wrought meerschaum pipes and a myriad of other beautiful, useful and unusual things. For more information about visiting this country, contact the Turkish Tourism and Information Office, 500 Fifth Avenue, New York, N.Y. 10036.

Sultan Ahmet Mosque, in Istanbul, is known as the "Blue Mosque" because its interior is covered with gleaming blue tiles.

Neolithic Age 9,000 years ago, the Greeks and Romans, the early Christians, the Moslems and the Crusaders. It has snow-capped mountains for you to ski on and miles of beaches for you to swim from into the crystal-clear waters of the Aegean Sea, the Black, or the Mediterranean. It has charming fishing villages and modern cities with luxury hotels and swinging night clubs. It has bazaars where you can buy, at amazing prices, hand-embroidered silks, soft sheepskin coats, gleaming gold jewelry and ornaments, painstakingly wrought meerschaum pipes and a myriad of other beautiful, useful and unusual things. For more information about visiting this country, contact the Turkish Tourism and Information Office, 500 Fifth Avenue, New York, N.Y. 10036.

Sultan Ahmet Mosque, in Istanbul, is known as the "Blue Mosque" because its interior is covered with gleaming blue tiles.

Neolithic Age 9,000 years ago, the Greeks and Romans, the early Christians, the Moslems and the Crusaders. It has snow-capped mountains for you to ski on and miles of beaches for you to swim from into the crystal-clear waters of the Aegean Sea, the Black, or the Mediterranean. It has charming fishing villages and modern cities with luxury hotels and swinging night clubs. It has bazaars where you can buy, at amazing prices, hand-embroidered silks, soft sheepskin coats, gleaming gold jewelry and ornaments, painstakingly wrought meerschaum pipes and a myriad of other beautiful, useful and unusual things. For more information about visiting this country, contact the Turkish Tourism and Information Office, 500 Fifth Avenue, New York, N.Y. 10036.

Sultan Ahmet Mosque, in Istanbul, is known as the "Blue Mosque" because its interior is covered with gleaming blue tiles.

### Bicentennial—More Than A Birthday

By Senators Charles McC. Mathias, Jr.

More Than A Birthday

The nation's bicentennial is now approaching, but there has been little sign that it will be what I have long hoped for . . . something more than a big birthday party for the nation's 200th anniversary.

Despite the absence of concrete plans at either national or local levels, there are indications that some Americans have begun to see the real opportunity which this anniversary gives us. It is a most appropriate time to take a look at our origins and our ideals, and to see how well they have brought us through two centuries.

The result could be a return to the principles which have served so well, in the form of a clear idea of what this nation stands for, and will continue to stand for in the decades ahead.

As a nation, we have only begun this kind of thorough reassessment, and only in the context of the new world forces affecting our economy, our energy and resources, or our national security.

By the time July 4th, 1976 has arrived, this process may not have ripened. I have therefore proposed that the official period of the Bicentennial be extended from the present ending date, December 31, 1976, to December 31 of 1989.

This would close our Bicentennial with the 200th anniversary of the Constitution. In fact, the American Revolution did not end with the Declaration of Independence. It encompassed the entire period during which our nation's founders carefully considered and adopted the framework of our government.

I think that we should devote an equivalent period to a new look at ourselves. A one-year extravaganza filled with ceremonies and bunting, simply will not permit the kind of self-renewal which we ought to have. I think this would be a much more meaningful observance of our birth as a nation.

By extending the period of the Bicentennial to cover these anniversaries, the Declaration of Independence and the Constitution, I hope we can give ourselves the inspiration and the time to recapture the ideals, the wisdom, the courage, and the forthrightness of the early days, and reinvigorate them as our guides for the complex and urgent problems of this era.

If we have the courage to make this commitment, we can say that the Revolution is still very much alive in the American people.

### NEWS OF TRAVEL

#### TURKEY—ECONOMICAL AND EXQUISITE

If you're like most Americans, you want to get the most out of your vacation. Many say one place to get that is where you can see famous historical sites, beautiful scenic sights, exotic rites, exciting nights, and prices that are really right. If you say the same, you're talking Turkey. That country, set on two continents and four seas, has ancient ruins and relics from the

Neolithic Age 9,000 years ago, the Greeks and Romans, the early Christians, the Moslems and the Crusaders. It has snow-capped mountains for you to ski on and miles of beaches for you to swim from into the crystal-clear waters of the Aegean Sea, the Black, or the Mediterranean. It has charming fishing villages and modern cities with luxury hotels and swinging night clubs. It has bazaars where you can buy, at amazing prices, hand-embroidered silks, soft sheepskin coats, gleaming gold jewelry and ornaments, painstakingly wrought meerschaum pipes and a myriad of other beautiful, useful and unusual things. For more information about visiting this country, contact the Turkish Tourism and Information Office, 500 Fifth Avenue, New York, N.Y. 10036.

Sultan Ahmet Mosque, in Istanbul, is known as the "Blue Mosque" because its interior is covered with gleaming blue tiles.

Neolithic Age 9,000 years ago, the Greeks and Romans, the early Christians, the Moslems and the Crusaders. It has snow-capped mountains for you to ski on and miles of beaches for you to swim from into the crystal-clear waters of the Aegean Sea, the Black, or the Mediterranean. It has charming fishing villages and modern cities with luxury hotels and swinging night clubs. It has bazaars where you can buy, at amazing prices, hand-embroidered silks, soft sheepskin coats, gleaming gold jewelry and ornaments, painstakingly wrought meerschaum pipes and a myriad of other beautiful, useful and unusual things. For more information about visiting this country, contact the Turkish Tourism and Information Office, 500 Fifth Avenue, New York, N.Y. 10036.

Sultan Ahmet Mosque, in Istanbul, is known as the "Blue Mosque" because its interior is covered with gleaming blue tiles.

Neolithic Age 9,000 years ago, the Greeks and Romans, the early Christians, the Moslems and the Crusaders. It has snow-capped mountains for you to ski on and miles of beaches for you to swim from into the crystal-clear waters of the Aegean Sea, the Black, or the Mediterranean. It has charming fishing villages and modern cities with luxury hotels and swinging night clubs. It has bazaars where you can buy, at amazing prices, hand-embroidered silks, soft sheepskin coats, gleaming gold jewelry and ornaments, painstakingly wrought meerschaum pipes and a myriad of other beautiful, useful and unusual things. For more information about visiting this country, contact the Turkish Tourism and Information Office, 500 Fifth Avenue, New York, N.Y. 10036.

Sultan Ahmet Mosque, in Istanbul, is known as the "Blue Mosque" because its interior is covered with gleaming blue tiles.

Neolithic Age 9,000 years ago, the Greeks and Romans, the early Christians, the Moslems and the Crusaders. It has snow-capped mountains for you to ski on and miles of beaches for you to swim from into the crystal-clear waters of the Aegean Sea, the Black, or the Mediterranean. It has charming fishing villages and modern cities with luxury hotels and swinging night clubs. It has bazaars where you can buy, at amazing prices, hand-embroidered silks, soft sheepskin coats, gleaming gold jewelry and ornaments, painstakingly wrought meerschaum pipes and a myriad of other beautiful, useful and unusual things. For more information about visiting this country, contact the Turkish Tourism and Information Office, 500 Fifth Avenue, New York, N.Y. 10036.

Sultan Ahmet Mosque, in Istanbul, is known as the "Blue Mosque" because its interior is covered with gleaming blue tiles.

Neolithic Age 9,000 years ago, the Greeks and Romans, the early Christians, the Moslems and the Crusaders. It has snow-capped mountains for you to ski on and miles of beaches for you to swim from into the crystal-clear waters of the Aegean Sea, the Black, or the Mediterranean. It has charming fishing villages and modern cities with luxury hotels and swinging night clubs. It has bazaars where you can buy, at amazing prices, hand-embroidered silks, soft sheepskin coats, gleaming gold jewelry and ornaments, painstakingly wrought meerschaum pipes and a myriad of other beautiful, useful and unusual things. For more information about visiting this country, contact the Turkish Tourism and Information Office, 500 Fifth Avenue, New York, N.Y. 10036.

Sultan Ahmet Mosque, in Istanbul, is known as the "Blue Mosque" because its interior is covered with gleaming blue tiles.

Neolithic Age 9,000 years ago, the Greeks and Romans, the early Christians, the Moslems and the Crusaders. It has snow-capped mountains for you to ski on and miles of beaches for you to swim from into the crystal-clear waters of the Aegean Sea, the Black, or the Mediterranean. It has charming fishing villages and modern cities with luxury hotels and swinging night clubs. It has bazaars where you can buy, at amazing prices, hand-embroidered silks, soft sheepskin coats, gleaming gold jewelry and ornaments, painstakingly wrought meerschaum pipes and a myriad of other beautiful, useful and unusual things. For more information about visiting this country, contact the Turkish Tourism and Information Office, 500 Fifth Avenue, New York, N.Y. 10036.

Sultan Ahmet Mosque, in Istanbul, is known as the "Blue Mosque" because its interior is covered with gleaming blue tiles.

Neolithic Age 9,000 years ago, the Greeks and Romans, the early Christians, the Moslems and the Crusaders. It has snow-capped mountains for you to ski on and miles of beaches for you to swim from into the crystal-clear waters of the Aegean Sea, the Black, or the Mediterranean. It has charming fishing villages and modern cities with luxury hotels and swinging night clubs. It has bazaars where you can buy, at amazing prices, hand-embroidered silks, soft sheepskin coats, gleaming gold jewelry and ornaments, painstakingly wrought meerschaum pipes and a myriad of other beautiful, useful and unusual things. For more information about visiting this country, contact the Turkish Tourism and Information Office, 500 Fifth Avenue, New York, N.Y. 10036.

Sultan Ahmet Mosque, in Istanbul, is known as the "Blue Mosque" because its interior is covered with gleaming blue tiles.

Neolithic Age 9,000 years ago, the Greeks and Romans, the early Christians, the Moslems and the Crusaders. It has snow-capped mountains for you to ski on and miles of beaches for you to swim from into the crystal-clear waters of the Aegean Sea, the Black, or the Mediterranean. It has charming fishing villages and modern cities with luxury hotels and swinging night clubs. It has bazaars where you can buy, at amazing prices, hand-embroidered silks, soft sheepskin coats, gleaming gold jewelry and ornaments, painstakingly wrought meerschaum pipes and a myriad of other beautiful, useful and unusual things. For more information about visiting this country, contact the Turkish Tourism and Information Office, 500 Fifth Avenue, New York, N.Y. 10036.

Sultan Ahmet Mosque, in Istanbul, is known as the "Blue Mosque" because its interior is covered with gleaming blue tiles.

Neolithic Age 9,000 years ago, the Greeks and Romans, the early Christians, the Moslems and the Crusaders. It has snow-capped mountains for you to ski on and miles of beaches for you to swim from into the crystal-clear waters of the Aegean Sea, the Black, or the Mediterranean. It has charming fishing villages and modern cities with luxury hotels and swinging night clubs. It has bazaars where you can buy, at amazing prices, hand-embroidered silks, soft sheepskin coats, gleaming gold jewelry and ornaments, painstakingly wrought meerschaum pipes and a myriad of other beautiful, useful and unusual things. For more information about visiting this country, contact the Turkish Tourism and Information Office, 500 Fifth Avenue, New York, N.Y. 10036.

Sultan Ahmet Mosque, in Istanbul, is known as the "Blue Mosque" because its interior is covered with gleaming blue tiles.

### Guest Appearance At Library Show

The delightful film, "Rabbit Hill," will be shown at 10:30 a.m., March 22, at the Emmitsburg Public Library. Admission is free and children of all ages are invited. Mr. O'Grady, a beautiful and friendly live rabbit, will make a guest appearance at this program.

Class A will be a United States Chess Federation sanctioned tournament, directed by Robert Trone LTD. USCF membership is required and may be purchased at registration. Also there is a fee of \$2 (if sent before March 31) or \$3 thereafter. The match will be a four-round Swiss System 40/60 with rounds beginning at 9 a.m. and 12:30, 3:30, and 7 p.m. Trophies will be given to the champion, to second place, and to the best player under 14 years of age. Last year's winners were Joe Ohler of Waynesboro, Dwight Shaules of Westminster, and John Bare of Hanover.

### IRS Says 160,000 Tax Return Errors

Internal Revenue Service estimates that 160,000 taxpayers in Maryland and the District of Columbia will make mistakes on their 1974 income tax returns that will delay their refunds.

Gerald G. Portney, Baltimore District Director of IRS, says a number of common errors have already delayed processing of 65,000 area returns and projects that about 8% of the more than 2 million returns expected will be in error. "Mistakes often mean the Service Center must correspond with the taxpayer, causing weeks of delay in processing," he said.

Two of the biggest errors so far involve designation of filing status and computation of tax due, Mr. Portney said. "Some people are incorrectly checking both 'Single' and 'Head of Household' filing status. Taxpayers must check only one block," he explained, "because it determines which tax rate schedule or column of the tax tables will yield the correct tax."

Mr. Portney said many taxpayers who take the standard deduction are incorrectly subtracting \$750 per exemption from their taxable income before finding their tax tables, which already include compensation for exemptions. Other common mistakes involve failure to complete the 1% and 3% limitations on medical deductions, mathematical errors, incorrect transpositions from one form to another, and failure to sign the return or attach Forms W-2.

"With only four weeks left in the filing period, we hope those taxpayers who have yet to file will do so soon, after thoroughly checking their returns for errors that could delay their refunds," Mr. Portney concluded.

### THURSDAY NIGHT LADIES' LEAGUE (Rainbow Lanes)

Texaco Stars ..... 76 28  
Gay's Gals ..... 63 41  
Village Liquors ..... 61 43  
Untouchables ..... 57 47  
Morningstar Electric ..... 55 49  
Staley Body Shop ..... 44 60  
Gearhart Electric ..... 34 70  
Shaft Nuts ..... 26 78

High team set, Texaco Stars, 1573; high ind. set, Mary Ann Hahn, 351; high ind. game, Bettys Gearhart, 139.

### Spring Is Bustin' Out!

at the 4th Annual

EASTER

OPEN HOUSE

PALM SUN., MAR. 23

1-6 P.M.

Mum Special

\$6.99

Cash 'n Carry

\$1 extra delivered

at

GATEWAY

FLOWER & GIFT

SHOP

On The Square

In Thurmont

Phone 271-4178

### ANNOUNCEMENT

I wish to announce the appointment of

CARROLL "DICK" GLASS

of near Rocky Ridge, as Sales Representative

in the listing and selling of Real Estate in Frederick County.

If you plan to sell your home, farm or acreage, give Dick a chance to show what he can do for you.

Our office has sold several farms, homes, and several acreage tracts already this year, and are receiving numerous calls for country homes, small and larger farms, and bldg. lots.

We have sold billions of dollars worth of real estate in Frederick County during our nearly 30 years in business, and you, too, can depend on our long experience. Give us a try—we need listings now for spring buyers.

**R. L. ZENTZ, BROKER**

Taneytown, Md. Phone 756-6960

Call Dick Glass at 271-2439

### Chess Tournament At G-Burg College

The 7th Annual Gettysburg College Open Chess Tournament will be held Saturday, April 12, in Glatfelter Hall, room 101, with registration in the faculty lounge from 8-8:45 a.m.

Class A will be a United States Chess Federation sanctioned tournament, directed by Robert Trone LTD. USCF membership is required and may be purchased at registration. Also there is a fee of \$2 (if sent before March 31) or \$3 thereafter. The match will be a four-round Swiss System 40/60 with rounds beginning at 9 a.m. and 12:30, 3:30, and 7 p.m. Trophies will be given to the champion, to second place, and to the best player under 14 years of age. Last year's winners were Joe Ohler of Waynesboro, Dwight Shaules of Westminster, and John Bare of Hanover.

Class B is free, not sanctioned by the USCF, and does not require membership in the USCF. Registration will be from 8-8:30 a.m. It, too, will be a four-round Swiss match 40/60 with rounds beginning at 8:45 a.m. and 12:15, 3:15, and 6:45 p.m. The winner will receive a trophy. Last year's winner was Jim Gallagher of York.

Players are requested to bring standard sets and clocks if possible. Preregistrations or inquiries should be directed to Prof. Robert H. Trone, Gettysburg College, Gettysburg, Pa. 17325.

### THURSDAY NIGHT LADIES' LEAGUE (Rainbow Lanes)

Texaco Stars ..... 76 28  
Gay's Gals ..... 63 41  
Village Liquors ..... 61 43  
Untouchables ..... 57 47  
Morningstar Electric ..... 55 49  
Staley Body Shop ..... 44 60  
Gearhart Electric ..... 34 70  
Shaft Nuts ..... 26 78

High team set, Texaco Stars, 1573; high ind. set, Mary Ann Hahn, 351; high ind. game, Bettys Gearhart, 139.

High team set, Texaco Stars, 1573; high ind. set, Mary Ann Hahn, 351; high ind. game, Bettys Gearhart, 139.

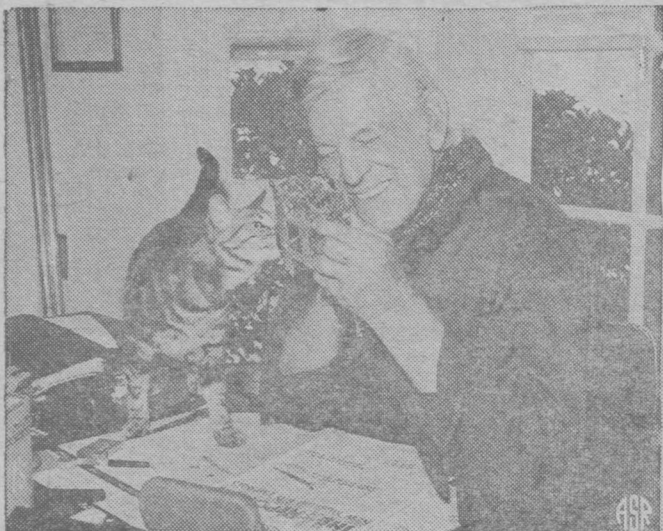
High team set, Texaco Stars, 1573; high ind. set, Mary Ann Hahn, 351; high ind. game, Bettys Gearhart, 139.

High team



# "Get A Hobby—Work For Love"

by Rosemary DeCamp



Curiosity piques the interest of actor Denver Pyle's cat, Phyllis, as he pursues his hobby of fixing old clocks and watches.

(Actress Rosemary DeCamp is one of many Hollywood celebrities who pursue worthwhile hobbies off camera. Here she writes of the unusual hobby of fellow actor Denver Pyle.)

You've seen Denver Pyle as a gun-toting villain in lots of John Wayne movies or as the lawman who gunned down "Bonnie and Clyde."

But do you know what that big bear of a guy does with much of his spare time?

He repairs the delicate mechanisms of old clocks and watches!

"It's my think therapy," confides the onetime Colorado dirt farmer who had to keep equipment working on the farm as a boy. "When I can't sleep at night, I get up and work on the clocks. It takes a lot of concentration, and soon you're thinking only of the problem with the clock, not your own worries."

"Once you figure how they are supposed to work it becomes a matter of logic. The parts work in sequence. Trace the sequence and you'll soon find the part that's not working."

Denver has a collection of books and workshop manuals about watches and clocks. He trades parts with collectors all over the U.S. "It's a good way to make friends," he says.

Not too long ago, while he was filming a "Streets of San Francisco" TV episode in the Bay City, Denver bought an old, defunct 8-day Waltham clock at a garage sale for \$1. "I got it working that night in my hotel room," he recalls. Now it ticks along with 30 other clocks in his library.

"It's very important to keep your hands clean when you're working with these tiny metal parts," Pyle advises. "You must keep your hands free of oil, and body acids are hard on brass parts. I use that good old powdered hand soap, Boraxo, to keep my fingers clean."

Denver's greatest challenge, and he hasn't surmounted it yet, is to repair a corroded, salt-encrusted Seth Thomas ship's clock that had been retrieved from a sunken vessel off Mazatlan, Mexico. "I still can't get it started," he says, "but I will!"

## Food Stamp System Attacked By Food Stamp Coalition

The Maryland Food Stamp Coalition urges that Maryland Post Offices be opened immediately as sales outlets for food stamps. "The Post Offices offer a real convenience to customers since they are open all day and include Saturday mornings. Their hours and widespread locations would be particularly helpful to those working people who cannot take time off to stand in long lines. They would also help the unemployed, the elderly, and those on Public Assistance who are eligible to participate in the Food Stamp Program and yet who often must travel long distances or run from place to place to purchase stamps," said Mary Jo Kirschman, Co-Chairperson of the Coalition. There are more than four hundred Post Offices throughout the State of Maryland as contrasted with about one hundred locations in the State where people can now buy stamps. There are 22 Post Office stations in Baltimore City, which, were they to open up to food stamp sales fulltime, would almost quadruple the number of hours in

the City in which people could purchase stamps. At present there are forty-eight sales outlets in Baltimore City (including four Social Services offices, seven credit unions, and 37 banking institutions selling six hours a week, each). There is nowhere, aside from the limited armor truck stops, where a person can buy Food Stamps after 3 p.m. Yet there are 22 Post Office stations, some 242 banking institutions and countless numbers of stores which have secure facilities and could be reimbursed to sell stamps.

Nineteen states throughout the country sell Food Stamps in Post Offices for 80¢ per transaction. The decision on whether or not to sell belongs to the District Manager, who in Maryland is Mr. Warren Bloomberg.

"The banks have said 'why not the Post Offices?'" the Post Office has said "why not the banks?" said Ms. Kirschman. "It is the Coalition's position that anyone and everyone with proper facilities should be helping out in times of economic crisis rather than

passing to buck.' Ultimately the community will have to deal with the very serious plight of its hungry citizens one way or another. Limited sales facilities will only continue to cause overcrowding—a problem for the seller as well as the participant." Every institution which sell stamps is reimbursed for each transaction and every local dollar expended in Food Stamp administration returns \$25 to \$30 to the local economy in Federal bonus.

The Maryland Food Stamp Coalition is composed of 22 private charitable agencies, labor organizations and food stores.

## Lenten Lunch At Fairfield Inn

Local clergymen held a Lenten luncheon recently at the Fairfield Inn in Fairfield. Those attending were Rev. Harry Kuhn, C.M., Rev. and Mrs. Eugene Ackerman, Rev. and Mrs. W. Ronald Fearer, Rev. and Mrs. Walter Bowers, Rev. Joseph Keenan, C.M., and Rev. and Mrs. John Chatlos.

## ELECTRONIC CALCULATORS CAN SAVE YOU IN MANY WAYS AT TAX TIME



What's the most common reason for incorrectly filed income tax returns? According to Internal Revenue Service statistics, it's computation error, usually no more than a mistake in addition or subtraction. That's why more and more people are turning for help to personal electronic calculators to save them time, mental anguish and, often as not, money.

This growing use of calculators in preparing income tax returns is a significant factor reducing such mistakes. When a person is called upon to add or subtract long columns of figures, mistakes can and do occur. Now, with low-cost calculators to help do the math involved, the taxpayer is armed with a weapon to fight these mistakes.

Electronic calculators are one of the few items whose prices have actually come down in the past year. A basic 4-function unit that cost \$100 or more last year, now may be purchased for about one quarter of that price. For example, Rockwell International, a major name in electronics and a dominant force in the calculator field, markets such a unit retailing for \$24.88.

Low-cost calculators are so new on the scene that the IRS

has no figures upon which to make a projection as to how many mistakes will be eliminated by people using calculators; however, the numbers may be significant. Persons using calculators will be more sure of their figures, and will have a solid base upon which to prepare the return.

The nature of the tax form is such that almost every calculation, no matter how simple, has a direct bearing on every other figure entered. Thus, an initial mistake can compound itself throughout a return. By utilizing a calculator, the taxpayer knows with certainty that the figures upon which the returns are based have been added or subtracted correctly.

Knowing that the math is correct makes the rest of the procedure of filing a return much less threatening. The IRS continually revises its tax forms, attempting to make them more easily understood and less complicated. This year, entire schedules have been eliminated for those who itemize, or consolidate into other forms.

According to the IRS, the following mistakes are the ones most people make when filing a return:

1. COMPUTATION ERROR — Double check all arithmetic. An electronic calculator is a good tool to help with the numbers whether you file the short form or itemize deductions.

2. FAILURE TO FOLLOW DIRECTIONS — Read the entire form before you begin, and follow directions. Changes from previous years are noted on the form.

3. FAILURE TO INCLUDE SOCIAL SECURITY NUMBER — This is the IRS's main method of identification, and if the number is missing, will cause a rejected return.

4. FAILURE TO SIGN YOUR NAME — This happens most often on joint returns when either husband or wife neglects to sign.

5. FAILURE TO INCLUDE NECESSARY FORMS & SCHEDULES — Be sure to attach your W-2, and, if you itemize deductions, all necessary schedules.

Remember these five points, and you will find that doing your income tax becomes a straightforward, less mysterious procedure. And, in almost all instances, the use of an electronic calculator will save time, worry and, quite possibly, money.

## Holy Week At St. Joseph's Church

The Holy Week schedule for St. Joseph's Catholic Church in Emmitsburg, will be as follows:

The regular schedule of Masses will be followed for Palm Sunday. Masses will be distributed at all the Masses.

Mass will be celebrated Monday, Tuesday and Wednesday mornings at 6:30 and on Monday and Wednesday evenings at 7:30. The 11:00 a.m. Mass will also be offered on Tuesday.

Mass will be celebrated at 6:30 a.m. and at 4:30 p.m. on Holy Thursday. The Holy Thursday Liturgy with First Holy Communion will be at 7:00 p.m. Adoration will follow the Liturgy and end at Midnight.

On Good Friday, a day of fast and abstinence, the Liturgy will begin at 4:30 p.m. Stations of the Cross will be at 7:30 p.m. A prayer vigil will be held between 2 and 4 p.m.

On Holy Saturday, the Easter Vigil Liturgy will start at 7:30 p.m. followed by the Mass of the Resurrection.

Masses will follow the usual Sunday's schedule on Easter Sunday.

Confessions will be held on Monday, Tuesday and Wednesday from 7:30-9:00 p.m. On Holy Thursday from 4-5:30 p.m. and after the evening Liturgy. On Good Friday after the 4:30 p.m. Liturgy and from 7:30-9:00 p.m. Confessions will be heard from 4-5:30 p.m. on Holy Saturday. There will be no confessions Holy Saturday evening.

## WEATHER REPORT

Temperatures and precipitation for the Emmitsburg District for the week ending Fri., March 14, as reported by the National Weather Service, Mrs. Lucille K. Beale, local observer, were as follows:

	H	L	Pr.
Sat., Mar. 8	46	34	...
Sun., Mar. 9	38	15	...
Mon., Mar. 10	38	18	.15
Tues., Mar. 11	42	27	...
Wed., Mar. 12	41	25	.56
Thurs., Mar. 13	54	39	...
Fri., Mar. 14	48	29	.95

## THANK YOU ALL!

For A Very Successful Sale in closing our Thurmont Branch Store. We look forward to giving you the same friendly and courteous service for your future home furnishing needs at our main store in Historic Downtown Frederick at 117 S. Market Street. For any assistance you need, please call us at 662-5216 or come see us.

Again, Many-Many THANKS!  
Yours Truly  
BILL SHEPLEY

## TUESDAY NIGHT

### MIXED LEAGUE

(Rainbow Lanes)

	W	L
Scatter Pins	73	31
Gearhart's Electric	64	40
Ramblers	59	45
Bell's Snack Bar	58	46
Outcasts	48	56
Pinbusters	46	58
Rainbow Nite Owls	40	64
Dreamers	28	76

High team set, Gearhart's Electric, 1637; high ind. set and game for women, Betty Gearhart, 348, 121; high ind. set and game for men, Bill Hurst, 376, Dave Lawrence, 153.

## Zip Column

(Continued From Page 1) portedly shouldered a 1,000-lb. cannon alone during the Battle of Camden, where he also saved his command's life. Welding a broadsword with a five-foot blade, he is credited with killing eleven Redcoats at the Battle of Guilford Court House and a monument commemorating his spectacular feats stands today on that battlefield near Greensboro, North Carolina. George E. Rosensteel, PM.

The Japanese believe that the Northeast is an unlucky direction to go to.



## Easter—great day to dine out

### EASTER SUNDAY - special-

Only: **\$4.60**  
child: \$3.40  
Includes, of Course, Coffee or Hot Tea 1-7 P.M.

**OYSTERS and/or HAM**  
Juice - Salad  
Limas - Rolls  
Baked Potato With Sour Cream or Butter  
— BLUEBERRY —  
or  
CHOCOLATE TART

## Shamrock Restaurant

Thurmont, Md. Phone: 271-2912 or 271-7882  
Now Open 7 Days A Week

## NOTICE!

The Election for the Town of Emmitsburg will be held Tuesday, April 29, 1975.

One Commissioner will be elected.

The deadline for filing for office or registering to vote will be 3 P.M., Friday, April 18.

All persons who have not voted within the last five years must register before the deadline to be eligible to vote.

BURGESS AND COMMISSIONERS

**Spring Is Bustin' Out**  
at the 4th Annual  
**Easter Open House**  
at  
**GATEWAY FLOWER & GIFT SHOP**  
PALM SUNDAY — MARCH 23  
1-6 P.M.

FEATURING THE FRAGRANT FLOWERS OF SPRING  
Lilies - Hyacinths - Tulips  
Mums  
Fresh Cut Flower Arrangements - Terrariums & Dish Gardens - Candy Filled Easter Baskets  
Door Prizes Refreshments

**FAST DELIVERY**  
On The Square in Thurmont Cash & Carry  
Phone 271-4178

**FREE RECORDS & TAPES**

Mediterranean style

With the purchase of any **SYLVANIA CONSOLE STEREO**  
Sylvania model SCT4613 features solid-state AM/FM/FM-Stereo receiver; built-in 8-track tape player, full-size Glenburn automatic turntable, and Sylvania high efficiency speaker system with two 8" woofers and two 2 1/2" tweeters.  
**Only \$299.95**

The Great **SYLVANIA PRICE FIGHT**

**Myers' Radio & TV**  
AND RECORD SHOP  
Phone 447-2202 Emmitsburg, Md.

## How long can you live on love?



Love. It can move mountains. But it can't run a household. Or meet all the bills. Or put kids through college. That takes money. And one good way to make sure your money will grow along with your marriage is by signing up now for the Payroll Savings Plan where you work. Then an amount you specify will be set aside from each paycheck and used to buy U.S. Savings Bonds.

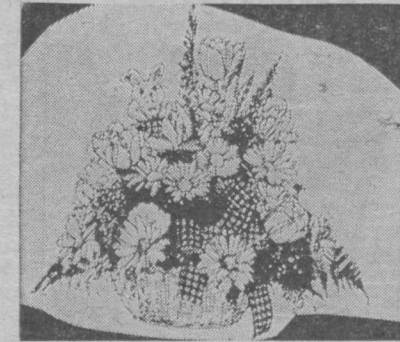
You don't have to worry so much about the future. And you'll have a little more time for love.

Now E Bonds pay 6% interest when held to maturity of 5 years (4 1/2% the first year). Bonds are replaced if lost, stolen or destroyed. When needed, they can be cashed at your bank. Interest is not subject to state or local income taxes, and federal tax may be deferred until redemption.

**Take stock in America.**  
Join the Payroll Savings Plan.

## Cozy Bud 'N Vase Shoppe PRESENTS THEIR ANNUAL SHOWING OF FLOWERS FOR EASTER

PALM SUNDAY, MARCH 23 — 13:30-6:00 P.M.



## HUNDREDS OF BLOOMING PLANTS

MUMS TULIPS GARDENIAS  
LILIES HYDRANGEA  
HYACINTHS AZALEAS

BE AN EARLY BUNNY — ORDER YOUR EASTER FLOWERS NOW

Door Prizes and Refreshments

FREDERICK ROAD THURMONT, MD. PHONE 271-2445