

Emmitsburg Chronicle

"READ BY MOST EMMITSBURGIANS"

VOLUME XCI, NO. 16

EMMITSBURG CHRONICLE, EMMITSBURG, MARYLAND, FRIDAY, FEB. 19, 1971

SINGLE COPY 10c

Most Anything At A Glance

- By Abigail -

Maryland taxpayers are still recovering from the trauma which struck them several weeks back when it was learned that the General Assembly had manipulated a neat little deal whereby the members of the State Legislature would come out of the sneak attack with a fat little raise in salary that would net them a paltry 450% increase in their stipend for serving you. So staggering was the blow that not much was heard concerning it or how it developed until the first shock waves had subsided and the folks knew they were duped once again. What happened was that the politicians, knowing that they could never get the raise through themselves, set out in pseudo fashion and through some gerrymandering had the Governor name a little committee to make recommendations for a pay scale hike. Why the committee went berserk and granted such an astronomical hike is not fully understood but the fact remains that it has been done and now we must pay the bill. Presently the Legislators receive \$2400 for a session's work, plus expenses. Under the new set-up they will take home a neat little bundle of \$11,500 for the same work, plus expenses. Talk about inflation? I dread the thought of just how many millions of dollars this little enactment by the Jesse James boys in Annapolis will cost us Maryland taxpayers when the final figures are learned. We just can't take this sort of thing laying down. I'd suggest you write to your three members of the House of Delegates and two State Senators and let them know that we are fully aware of the recent "stick-up of the decade at Annapolis."

I was sort of startled this week when I read the latest census figures on Gettysburg. For the past decade now everybody thought Gettysburg was really growing. At least it appeared so from the number of new business places, motels, etc. that sprang up. But apparently there was an exodus of the population and the latest figures show that the town took an eight per cent loss in population during the last 10 years. Figures show that Gettysburg lost over 700 citizens since the last nose count. The present population count is 7,275.

Now that the Ground Hog and Honest George's Birthday are behind us Old Man Winter seems bent on having a little season's end activity in store for us. For instance, this week we had rain, snow, sleet, ice and thunder and in some areas hail. Just about everything in the book and believe me, folks, the temperatures are not rising as much as we'd like to see them. It has been a cold January and February. You know, we haven't had very many days above freezing since Christmas. Well, if you can just hold on for several more weeks yet you'll start seeing some much nicer weather and it'll all be over for another year.

CONDUCTS WORKSHOP

Dr. Helen Yura, chairman of the department of nursing at St. Joseph College, conducted a two and a half day workshop on "The Nursing Process" for the Visiting Nurse Association of Dade County in Miami, Florida. Thirty public health staff nurses attended the sessions which were held from January 26 to the 28.

In addition, a full-day session on "Super-vision" and nursing leadership behavior was conducted January 29 for nursing supervisors. While in Miami, Dr. Yura also spoke to senior and junior students at the Assumption Academy for Girls on "Careers in Nursing."

Celebrates Birthday

Mrs. Rose I. Shorb, North Seton Avenue, observed her birthday anniversary on February 4. To celebrate the occasion, she was the guest of honor at a buffet dinner given by her family on Sunday, Feb. 7. A very enjoyable afternoon was spent by approximately sixty guests who attended.

Charity Fair Nets \$2,000 From Affair

Approximately \$2,000 was realized at the St. Joseph College Charity Fair on Saturday. With the exception of \$200 in expenses, the proceeds will be given to the Seton Center in Emmitsburg.

Although the weather was poor, business was brisk and most of the items were sold in the first three hours.

Miss Roseanne Maher, chairman, pleased with the profit which was almost three times higher than last year's figure, announced that any of the leftover articles would be sold to students later this week.

The response of the community, students of both colleges, Sisters of the Daughters of Charity and friends of the Seton Center of St. Joseph College, worked to make the charity fair one of the most successful in the last several years.

This is the second year that the students ran the event. School tradition places the beginning of the festivities during the time of Elizabeth Seton, founder of St. Joseph College and the Daughters of Charity.

Sharing the honors for the event with Miss Maher, is Sister Mary Gilbert, moderator of the Marion Society.

The most popular section seemed to be the raffle which made \$900. Winners included Sister Mary Vincent of the Daughters of Charity, who won a hand made rug which she in turn donated to the Seton Center. Other winners were Kathy Cramer, a Llama fur poncho; Dr. Helen Yura, head of the St. Joseph College Nursing Dept., an Afghan; and Sister Mary Beard, who is stationed at St. Vincent Orphanage, a \$100 prize. The most expensive item auctioned during the day went for \$10.

Mounties Spirt Pair Of Games

Mount Saint Mary's toyed with King's College Saturday night here and chalked up its sixth straight victory to pull to the .500 mark with a 9-9 record.

The Mountaineers, sparked by the hot outside shooting of Tony Kinn, ripped out to a 32-17 lead midway in the first half before the Monarchs came back via the inside scoring of Paul Vetroes, 6'8", to pull to within 42-34 at half time.

Coach Jim Phelan's fast-stepping outfit pushed its lead to 67-42 after 12 minutes of the second half and had no trouble in maintaining a comfortable lead the rest of the way.

Kinn bombed the nets for 28 points in leading the Mount offense. John Novey, who landed 14 tallies, turned in another good performance. He captured 17 rebounds and held Yogi Eddinger, leading scorer for King's, to but 10 points.

Western Maryland College snapped the six-game winning streak of the Mt. St. Mary's cagers with a stunning 83-80 upset in a Mason-Dixon Conference game Monday evening at Westminster.

It was the first victory for a Green Terror team over the Mount since 1961.

Superb foul shooting by Western Maryland in the second half when 18 of 20 free throws were converted, enabled the Terrors to protect a narrow 45-41 lead gained at half time.

The Mount had a 34-29 margin on field goals but the Terrors swished 25 of 32 fouls while the losers made but 12 of 17.

Tony Kinn topped the Mounties with 25 points, while John Novey netted 22, the latter also snaring 14 rebounds.

The Mountaineers met Catholic U. last night in Washington, and will host arch rival Loyola here Saturday night.

Loses Money

Will the person or persons who found an envelop containing cash with the name of Mrs. Chatlos on the outside, please return it all to her, at 220 West Main Street. The money was lost by a child somewhere between 220 West Main Street and Keepers' Esso Service Station on business route 15 on Monday morning, Feb. 15.

Firemens' Social Sunday

The annual winter social for members of the Vigilant Hose Co., will be held Sunday starting at 1 p.m. in the Fire Hall.

An hour of intelligent study is worth two hours of listening to the uninformed.

Teachers-Board Still Far Apart On Negotiations

Agreement between the Board of Education and the Frederick County Teachers Association on a master contract for the next school year was reached by a three-member arbitration panel.

Following 16 hours of mediatory efforts, the panel reached a tentative agreement at 2 a.m. Sunday. Details of the teacher contract will be revealed after it is presented to a meeting of the FCTA representative council.

Although both parties will be given the opportunity to ratify the agreement reached by the panel, neither is bound to accept the contract. If either party chooses to reject the proposed contract, the Board of Education may unilaterally submit a teacher contract to the county commissioner for funding.

The mediation panel, headed by Dr. Jacob Seidenberg, who was chosen jointly by the FCTA and Board of Education, began discussion of the teacher contract on Saturday. Professional arbiter Jerry Lee Hart represented the Board of Education and MSTA official Robert Dexter represented the teachers.

The negotiations over the master contract for 1971-72 were declared at impasse by state superintendent of schools Dr. James A. Sensenbaur on Feb. 1 after both parties agreed that no further progress could be made by the negotiation teams. In a telegram to Dr. Sensenbaur, FCTA president Reese Poffenberger reported that the two had been unable to reach agreement "on at least 24 articles of the master agreement."

The teachers had requested a pay hike of \$1,300 asking that beginning teachers be paid \$8,200. They also asked that the present 5 per cent salary index be increased to 7 per cent. The Board of Education, at the end of the contract negotiations, had proposed a two per cent increase in base pay, to \$7,050 and maintenance of the 5 per cent index.

The disagreements between the negotiation teams involved not only monetary differences, but also centered on what issues are suitable for negotiation in the teacher contracts. Board of Education officials said that only those items involving the teachers alone were suitable for inclusion in the teacher contract. FCTA negotiators, however, said that any matter involving the welfare of teachers, even if it also affects the students, is negotiable.

Knights Hear Various Reports

The Formation Degree will be exemplified Sunday afternoon at Pangborn Council, Hagerstown, it was announced Monday evening at the regular meeting of Brute Council 1860, Knights of Columbus, held in the Council Home, Grand Knight George L. Danner presiding.

Rev. John Hurley, a member of the Council, was reported hospitalized at this time. Clyde J. Eyer reported on the Family Communion to be held March 27 and said that more details would be forthcoming. Carl A. Wetzel, activities chairman, reported on the Oyster Feast held last Sunday, stating it was both a success financially and socially.

Grand Knight Danner announced that he knew of an organ that would be available to the Council and Father Carl J. Fives was named to investigate the organ and the possibility of the Council's accepting it.

Father Fives reported on the progress of the abortion bill now being reviewed by the Maryland General Assembly and also the progress of the anti-smut campaign being waged by the Knights of Columbus. He said postal forms were available to those desiring not to receive any such pornographic material through the mails and urged that members use these forms. Lecturer Harry Otterson spoke briefly on the history and philosophy of the Knights of Columbus and its work with community youth development. District Deputy Eugene R. Rosensteel discussed coming district events and urged all to participate in them.

BAKE SALE

A Bake Sale, sponsored by the Future Homemakers of America, will be held Saturday, Feb. 20, starting at 1:00 o'clock, at the Emmitsburg Fire Hall.

Two cakes will be raffled off at 10c a raffle. Home-made vegetable soup and hot chocolate will also be on sale.

Church Group Sponsors Paper Drive

The members of Incarnation United Church of Christ Sunday School have announced that they will conduct another paper collection on Saturday morning, February 27, from 9 to 11 a.m. The rain date will be the following Saturday, March 6.

Please have your old papers and rags ready for the collectors. If you desire someone to collect from your house, please call Mrs. Joseph Hoke, 447-2013, giving name and address. If you wish to bring your papers to the church, the door to the Fellowship Hall (opening on the alley) will be open during the week of February 21.

The profit from this collection will be divided between the Hoffman Home for Children, an institution sponsored by the United Church of Christ, and the local Sunday School.

Remember, you are conserving paper by recycling it; you are not polluting the air by burning your paper; you are helping children in a service project; you are contributing to an institution engaged in helping disturbed children find their way back to society. Your cooperation will be appreciated.

Catoctin Girls Have Good Record

The girls' basketball team from Catoctin High School is having a very successful season with a 4-1 record.

Their game with Middletown at home ended with a 31-31 tie. The high scorer for this game was Patti Riffle with 12 points. Susie Weimer followed with 8, Carol Gearhart 6 and Sharon Weimer 4.

The Brunswick game was also played in Catoctin's gym. This was one of the girls' best games. The high scorer in this game was again Patti Riffle with 16 points. Mary Ann Rice and Susie Weimer each had 12 points, Liv Myers 8, Sharon Weimer 5, and Linda Sparkman 2. Sharon Weimer pulled down 15 rebounds, followed by Liv Myers with 11. The girls won the game, 55-8.

The next game was played with Frederick at Frederick. Patti Riffle was again high scored with 16 points. Susie Weimer was next with 12, Mary Ann Rice, 7, Sharon Weimer 5, and Carol Gearhart with 4. The girls won 46-13.

St. Joe's Girls Continue Winning

Both the girls' and boys' varsity of St. Joseph's High School were successful in defeating Our Lady of Pompeii School from Baltimore, Tuesday evening at the Emmitsburg Middle School.

The Trojan girls' showed skillful ball handling and proved working as a team was simple. Their match ended 34-16. This was the 5th straight win for the girls. High scorer for the Trojans and the game was Lenore Gmeiner with a total of 13 points. The lineup was: St. Joe's—Gmeiner, 6-1-13; R. O'Brien, 3-3-9; B. O'Brien, 2-0-4; W. O'Brien, 2-2-6; and Muir, 0-2-2. Pompeii—Barry, 2-0-4; Burgamy, 0-2-2; Transparel, 3-3-9; and Brown 0-1-1.

The Boys' Varsity were equally skilled in their game. They held their opponents down throughout the game, ending with a 74-69 score. They worked exceptionally well under the pressure of the 4th quarter when the score dwindled too close for comfort. Ken Adelsberger reached his high for the season and of the game with 34 points. The lineup: St. Joe's—K. Adelsberger, 14-6-24; Wivell, 4-6-14; R. Adelsberger, 6-1-13; Williams, 3-2-8; Little, 1-1-3; and Hobbs, 1-0-2. Pompeii—Benvenaga, 8-5-21; Spath, 2-0-4; Laras, 2-0-4; Quaranta, 3-7-13; and Giampacelo, 11-4-27.

DONATES BOOK

On Friday, Feb. 12, 1971, Mrs. Alan Brauer, a director of the Women's Committee of the Frederick County Farm Bureau, donated a book to the library of the Emmitsburg Middle School. The book, "Food From Farm to Home," was accepted by Mrs. Alma Jones, school librarian.

This is part of the Women's Committee program to familiarize the public with agriculture and its role in today's society. Through this book it is hoped that the young minds reading it will gain insight into the importance of the farm as the source of the nation's food supply.

Bloodmobile Schedules Visit Here

Emmitsburg area residents will have an opportunity this year to become active participants in the Red Cross Blood Program, and receive the blood protection that is provided nationally to all those who are eligible under the program. Eligibility can be established as follows:

Individual Participation Plan

One pint of blood donated by you covers your total blood needs for one year from the date of your donation. Coverage includes your Spouse, Children under 18; Parents and Parent-in-law; Grandparents and Grandparents-in-law; and Relatives living in the same home who are economically dependent upon donor.

Group Participation Plan

Blood donated by a specified number of a group (20% in Frederick County) covers the total blood needs for all members of the group as long as the group is meeting its quota. In addition, family coverage identical to that provided by the individual participation plan (see above) is provided for each member of the group.

Replacement of all blood will be made for all 'eligibles' in any hospital in the United States that will accept Red Cross blood.

Although the Red Cross Bloodmobile has been visiting Mount Saint Mary's College and Saint Joseph College for a number of years, very few citizens of the area have taken the opportunity to obtain this most essential protection for themselves and their families. Realizing the importance of the Red Cross Blood Program, the Emmitsburg Veterans Organization (VFW and American Legion) and the Emmitsburg Lions Club have indicated their desire to participate in the Blood Assurance Group Plan of the Frederick County Red Cross Blood Program.

In order to provide a convenient location for local citizens to donate blood, the administrations of Mount Saint Mary's and St. Joseph's welcome them to appear at either Mount St. Mary's on Thursday, March 4 or at St. Joseph's on Friday, March 12. Registration on both days will be from 10 a.m. to 3:30 p.m. James A. Grove, chairman of the Frederick County Red Cross Blood Program has also arranged to have the Bloodmobile visit the VFW home in Emmitsburg on Tuesday, July 6, with registration from 1 p.m. to 6:30 p.m.

Any person may be a blood donor who is in good health, between the ages of 18 and 65 and weighs more than 110 pounds. Persons with a history of jaundice, infectious hepatitis or malaria are not acceptable as donors at this time.

MSM Creates New Major

The Business and Education Departments of Mount Saint Mary's College have cooperated to create a new major field of study in business education.

The business education major will train students who are interested in teaching business-related courses (economics, bookkeeping, general business) at the high school level. There is an increasing demand for this type of teacher. High schools have been expanding their offerings of business courses and have had difficulty finding properly-trained teachers.

In addition to the ordinary requirements of the core curriculum of the college, business education majors will take courses in accounting, economics, statistics, quantitative methods, and business and finance. They will also take a full load of education courses and will student teach during their senior year.

It is hoped that a four-year program leading to a B.S. in business education will be ready for next year's freshman class. Approval by the Maryland State Department of Education must still be received. Present underclassmen who are interested in the degree will in most cases be able to adjust their schedules to accommodate the program's requirements.

Homemakers Club To Meet

The Homemakers Club of Emmitsburg will meet Thursday, February 25 at 1:30 p.m. at the Senior Citizen's Center. Members are requested to bring a hobby.

Mount Proves Economic Boon To Community

Mount Saint Mary's College has a substantial economic impact on the communities around its Emmitsburg campus, according to a college study announced today.

The sum of money that Mount Saint Mary's infused into the area's economy during the college's most recent complete fiscal year (July 1, 1969-June 30, 1970) is estimated at \$1,579,100. This includes payroll, purchase of goods and services, and expenditures by students.

During the 1969-70 fiscal year, the college paid \$1,179,664 in salaries to faculty, administration, maintenance, and service personnel. Most of the college's employees live within a twenty-five mile radius of the Mount Saint Mary's campus. Included are residents of Emmitsburg, Gettysburg, Hagerstown, Frederick, Smithsburg, Waynesboro, Thurmont, and Taneytown.

In addition to the college's own payroll, Saga Food Services, the firm with which the college has contracted to administer its dining hall, pays out \$140,000 annually in wages. Nearly all of Saga's employees live near the campus.

Even with allowances for the few employees who live further away, it is estimated that Mount Saint Mary's and Saga pay \$1.2 million per year in salaries and wages to area residents.

During fiscal 1969-70, Mount Saint Mary's College purchased approximately \$264,100 worth of goods and services from area merchants. Many things are needed to keep a college running. Commodities, such as books, office supplies, maintenance equipment, and food; utilities; and services like printing, computer rental and maintenance, and all sorts of repairs are required. To fulfill these needs, Mount Saint Mary's does business with people in Gettysburg, Thurmont, Hagerstown, Frederick, Emmitsburg, Westminster, Biglerville, and other area towns.

It is difficult to calculate the money which the Mount's 1150 students personally spend in the area. But with expenditures for such things as food, recreation, gasoline (for those who have cars), and clothes, it is estimated that the average student spends a little more than \$3.00 a week in the area, or approximately \$100 for the 32 weeks he is on campus. On this basis, the amount spent in the area by the entire student body would then come to about \$115,000 a year.

College Sets Visiting Day

St. Joseph College will hold another "visiting day" for prospective students on Saturday, March 20.

The Admissions Office encourages interested high school juniors and seniors to visit campus where they will receive a guided tour of the campus, visit the departments they're interested in, meet with faculty members, lunch with St. Joseph's students and have their interview with an admissions officer.

For more information or an appointment on visiting day, write or call Director of Admissions, St. Joseph College, Emmitsburg, Md. 21727.

Art Seminar To Be Offered

How is your New Year's Calendar shaping up? Enroll now in Frederick County's Third Art Seminar! Take the time to become better acquainted with the lives and works of Henri Matisse and Pablo Picasso. Why is Matisse said to have been a "distiller of sunshine"? Is Picasso a modern Michaelangelo? What is his special genius for making new discoveries?

There is hardly a better way to achieve an understanding of ourselves, and the "human dilemma," than by way of art.

The seminars will be held at Frederick Community College, Lecture Hall, from 8-10:15 p.m. on March 5, 12, 19, 26, April 2, 9. A fee of \$4.50 is charged each participant. For additional information you may call the Cooperative Extension Office at 663-8300.

Hospital Report

Admitted

Mrs. Roy Little, Emmitsburg. William Crawford, Emmitsburg.

Discharged

Harry Fogle, Emmitsburg R2. Mrs. Esta Miller, Emmitsburg.

Fire Leaves Local Family Homeless

Fire destroyed the interior of the one-story frame home of Mrs. Raymond Springer, a mile and a half from Emmitsburg, Wednesday morning about 8:30 o'clock, a half hour after she and her five children left the house to go to school and work.

The Vigilant Hose Co. responded to a call and found the interior of the home ablaze. Two pumpers and the squad truck went to the scene and used water from a nearby stream to check the fire that caused an estimated \$3,000 damage and destroyed furnishings, clothing and other personal possessions of the family.

Mrs. Springer, who works at the Seton Day Care Center, had left with the youngest of her children at 8 a.m. The other youngsters had left for school before the fire was discovered by a passerby.

Fire Chief Guy R. McLaughlin said the fire apparently started near a davenport in the middle room of the dwelling. He said the Emmitsburg firemen will receive clothing and furnishings for the family.

MRS. J. RUSSELL WANTZ

Mrs. Helen Louise Wantz, 62, wife of J. Russell Wantz, Emmitsburg, died on Saturday at the York General Hospital after a brief illness.

She was born in Frederick County and was a daughter of the late Samuel and Orpha (Freeze) Gigeous. She was a member of the Elias Lutheran Church of Emmitsburg and of its missionary society.

She had been employed by the Emmitsburg Manufacturing Company for 35 years.

Surviving are her husband; a son, Edward Crouse, Thurmont; a sister, Margaret Banks of Westminster; two brothers, Earl Gigeous, Baltimore, and Ray Gigeous of Emmitsburg; two grandchildren and these step-children: Russell Wantz Jr., Harney; Robert and Thomas Wantz and Mrs. James Welty, Emmitsburg; Wilbur Wantz, Thurmont; Leonard and Frank Wantz, Wisconsin; and Donald Wantz, Waynesboro.

Funeral services were held on Monday at 2 p.m. from the Creager Funeral Home, Thurmont, with her pastor, the Rev. W. Ronald Fearer, and Rev. Philip Bower, officiating. Interment was in the Blue Ridge Cemetery, Thurmont. Pallbearers were Wilbur Dutrow, Roland Frook, Alfred Hahn, Paul Late, Lewis Smith and Robert Wantz.

Senior Citizens

Entertain Council

Saturday, February 13, at eight o'clock, members of the Emmitsburg Senior Citizens Club gathered at the Center together with the members of the CYO group for a Valentine Party, sponsored by the youth club. The evening was happily spent by songs and instrumental music, together with guessing games and singing by both groups. Delicious refreshments of punch and cake were served by the entertainers. In spite of the extreme inclement weather, the small group of venturesome Senior Citizens extend their grateful thanks to the young people for a very pleasant evening.

The long heralded Turkey Dinner prepared and served by the Senior Citizens, for members and friends of the organization was attended by some sixty participants at the Center at six o'clock Tuesday, Feb. 16. Everything that accompanies such a dinner was enjoyed by the group.

After dinner, Mrs. McNair welcomed the invited guests—members of the Town Council, Mr. and Mrs. Arvin P. Jones, Rev. and Mrs. John Chatlos, Rev. Ronald Fearer and Father Kuhn. Mayor Sam Hays arose to thank the club in behalf of the Council. Mr. Jones spoke a few well-chosen words of congratulations to the hosts.

The evening closed with a song fest of old familiar songs before leaving for home.

BAND TO MEET

The monthly meeting of the Emmitsburg Municipal Band will be held on Monday, February 22 in the Band Room starting at 7:00 p.m. All band members, majorettes, color guard, and acrobats are requested to be present.

Frederick County Backgrounds

By SAMUEL CARRICK

The Sentman-McKinney Family
A few additional notes on the Rev. Solomon Sentman family are included at this time—in the interest of both history and genealogy—as follows:

It will be remembered that Sallie Sentman, the daughter of the Rev. Solomon and Sallie Sentman (first wife of the clergyman) married Andrew McKinney and their family record—as given in the McKinney family Bible as follows:

"Marriages"

"Andrew McKinney and Sarah Ann Sentman were married November the 3rd A.D., 1859.

Note: The first marriage of Andrew McKinney—it will be remembered that Sarah Ann (Sentman) McKinney died May 3rd, 1866 at Taneytown, Maryland, and was there interred.

"Married, Mar. 19th, A.D., 1868, Sarah Margaret Barr to Andrew McKinney."

Note: It would appear that Andrew McKinney was an extremely practical man for less than two years after the death of his first wife he had taken unto himself another helpmate—one Sarah Margaret Barr. Grief must give way to the practical side of life—young children must have a mother.

"Married, November 27th, 1889, Robert Sentman McKinney to Maggie Belle Galt."

Note: The son of Andrew and Sarah Ann (Sentman) McKinney—born to the first marriage of Andrew McKinney.

"Births—
"Andrew Galt McKinney was born the 17th day of February, A.D., in the year of our Lord, 1894."

Note: A son born to the second marriage of Andrew McKinney—which took place less than two years after the death of his first wife, Sarah Ann (Sentman) McKinney.

"On February 2nd, A.D., 1896, Isabella McKinney was born."

Note: A daughter born to the second marriage of Andrew McKinney—to Sarah Margaret Barr. "Andrew McKinney was born on the 21st day of September, A.D., in the Year of Our Lord, 1827."

Note: The founder, more or less, of the Taneytown branch of the

McKinney family who first married Sarah Ann Sentman and after her death, in 1866, he "entered into matrimony" for the second time, to Sarah Margaret Barr.

"Sarah Ann (Sentman) McKinney was born the 15th day of April, A.D., in the Year of Our Lord, 1839."

Note: The daughter of the Rev. Solomon and Sallie A. C. Sentman, who was married in 1859, to Andrew McKinney.

"Robert Sentman McKinney was born November the 27th, in the Year of Our Lord, A.D., 1860."

Note: A son, born to the first marriage of Andrew McKinney—to Sarah Ann Sentman. The first wife died in the year "of Our Lord 1866."

"Eliza Lehn McKinney was born the 18th of February, A.D., in the Year of Our Lord 1863."

Note: A daughter born to the first marriage of Andrew McKinney to Sarah Ann (Sentman) McKinney.

"Mary Belle McKinney was born the 28th of March, A.D., in the Year of Our Lord, 1865."

Note: A second daughter of Andrew McKinney by his first wife, Sarah Ann (Sentman) McKinney. There is at this time, no further data pertaining to this branch of the Sentman-McKinney family.

"Deaths—

"Eliza Lehn McKinney died Mar. the 3rd, A.D., 1866, aged 3 years, 1 month, and 15 days."

Note: The daughter of Andrew and Sarah Ann (Sentman) McKinney. The mother of this little girl died some two months later. What killed mother and daughter—one is inclined to wonder?

"Sarah Ann McKinney died the 3rd day of May, in the Year of Our Lord, 1866, aged 27 years and 18 days."

Note: Another daughter of Andrew and Sarah Ann (Sentman) McKinney. This young woman apparently died unmarried.

"Mary Belle McKinney died the 24th day of October, A.D., in the Year of Our Lord, 1894, aged 19 years, 6 months, and 26 days."

Note: A daughter, born to the first marriage of Andrew McKinney, to Sarah Ann (Sentman) McKinney. This daughter, too, died unmarried.

"Died, Andrew McKinney, on

the 21st of March, in the Year of Our Lord, 1896, aged 58 years and 6 months."

Note: Andrew McKinney, school master, was twice married, first to Sarah Ann Sentman and after her death, in 1866, to Sarah Margaret Barr. He had quite a large family, taken into consideration, the children born to both his marriages. It would appear, however, that he did "a fairly good job."

"Died, Sarah Margaret Barr McKinney, died June, 1921."

Note: The second wife of Andrew McKinney—with the usual role of the "one who played second fiddle". She was a mother to the children born to her husband by his first marriage—and cared for her own offspring as well. Not an easy job—even in this day and age.

"Andrew Galt McKinney died the 11th day of August, A.D., in

the Year of Our Lord, 1908, aged

...?"
Note: A son born to the second marriage of Andrew McKinney and Sarah Margaret (Barr) McKinney. Nothing definite is known pertaining to this branch of the family.

"Maggie Belle McKinney died the 24th day of January in the Year of Our Lord, 1941."

Note: Another daughter of Andrew McKinney born to his second marriage, to Sarah Margaret (Barr) McKinney.

"Robert Sentman McKinney died the 18th of April, in the Year of Our Lord, 1946, aged 86 years, 4 months, and 22 days."

Note: A grandson of the Rev. Solomon and Eliza Sentman, and a son of Andrew and Sarah Ann (Sentman) McKinney. Descendants of this branch of the family still reside in Taneytown, Maryland.

The notes on the families, who founded Tom's Creek (now Elias), Lutheran Church, and the early ministers, will be continued in this series next week.

St. Rita's Church Fashion Show Set For Charnita

A most promising array of styles for your spring wardrobe will be presented by Sherman's of Waynesboro at the St. Rita's Sixth Annual Fashion Presentation in the new Charnita Ballroom on Wednesday, March 3, at 8 p.m. Tickets are \$2.00 per person. Refreshments and drawings for many door prizes are included in this charge. Since the capacity of Charnita's Ballroom is 500 per-

sons, no reservations are neces-

sary.
Tickets may be secured from Mrs. Nancy Gmeiner, Chairman, 241-3344, or from Mrs. Joan O'-

Connor, Co-Chairman, 794-2932. Also tickets can be purchased at the door on the night of the Fashion Presentation.

HOME BUYER CLINIC
By Wm. J. McAuliffe, Jr., Executive Vice President, American Land Title Association

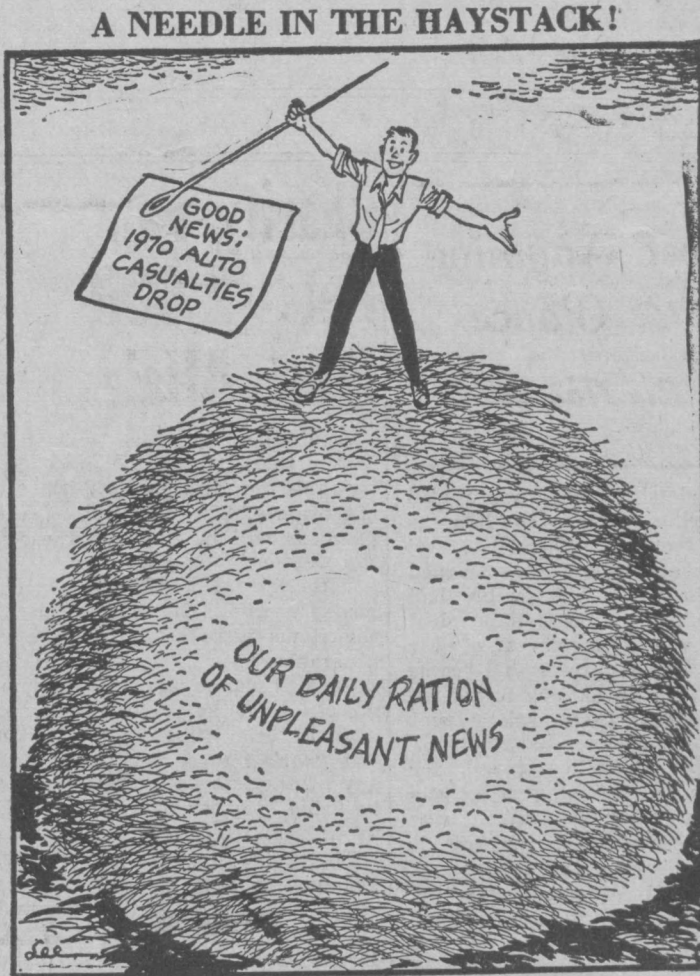
States Aid Buyers
In recent years, six states by law or regulation have instituted requirements that give home buyers a better opportunity to protect their real estate investment against loss due to land title difficulties.

Five of these states—New Jersey, Tennessee, Wm. J. McAuliffe, Jr., Maryland, Pennsylvania, and Florida—require that the home buyer in a transaction where mortgage lender's title insurance is being purchased also be informed of the availability of owner's title insurance. This requisite points to a problem also found in other states: the transaction where lender's title insurance is being purchased separately and the home buyer mistakenly thinks the lender's insurance will protect him too.

The sixth state, Texas, by law requires that the real estate sales person in writing inform the home buyer of the importance of having the abstract covering the real estate concerned examined by an attorney of the home buyer's choice—or that the home buyer be furnished with or obtain a policy of title insurance.

Owner's title insurance includes a search of separately located public records and protection against financial loss due to defects in the title, including those which cannot be discovered by the title search. It also provides for payment of the cost of a legal defense against an attack on a title as insured.

Becoming well informed ahead of purchase—on title searching, title insurance, and all other important matters involved—is an important step where your home buyer interests are concerned. For free literature on the subject, write American Land Title Association, 1828 L Street, N.W., Washington, D.C. 20036.



FACTS ON FOOD by HOMPSON

EACH DAY A PERSON'S DIET SHOULD SUPPLY HIM WITH PROTEIN FOR GROWTH AND BODY REPAIR, VITAMINS AND MINERALS TO KEEP THE BODY FUNCTIONING PROPERLY, AND FATS AND CARBOHYDRATES FOR ENERGY.

BALANCED DIET CAN BEST BE ATTAINED WITH A DAILY INTAKE OF SEVERAL SERVINGS FROM EACH OF THE "BASIC FOUR" FOODS: MEAT, POULTRY OR FISH—FRUITS AND VEGETABLES—MILK PRODUCTS—AND CEREAL PRODUCTS.

EXTENSIVE RESEARCH HAS SHOWN THAT CANNED FOODS ARE GOOD SOURCES OF NUTRIENTS. THERE IS INSIGNIFICANT LOSS OF VITAMINS DURING CANNING. MINERAL NUTRIENTS OF CANNED FOODS ARE COMPARABLE TO THOSE OF THE SAME PRODUCTS PREPARED FROM THE RAW STATE.

Professional Carpet Cleaning By Our Own Men AT YOUR CONVENIENCE

Call for Free Estimate



GETTYSBURG SHOPPING CENTER

22 Springs Avenue Phone 334-7300 Gettysburg, Pa.

GIBSON APPLIANCES



See The New Models REFRIGERATORS & FREEZERS Upright & Chest Freezers

Combination Refrigerator-Freezer

REAVES ELECTRIC CO., INC.

PHONE 447-2497—W. Main St. — EMMITSBURG

George Never Lied!

We Don't Either — Your Best Deal Is With Us!

Imported and Domestic Brands

BEER — WINE — WHISKEY

Party Snacks — Soft Drinks



Phone 447-2342

Mountain Liquors

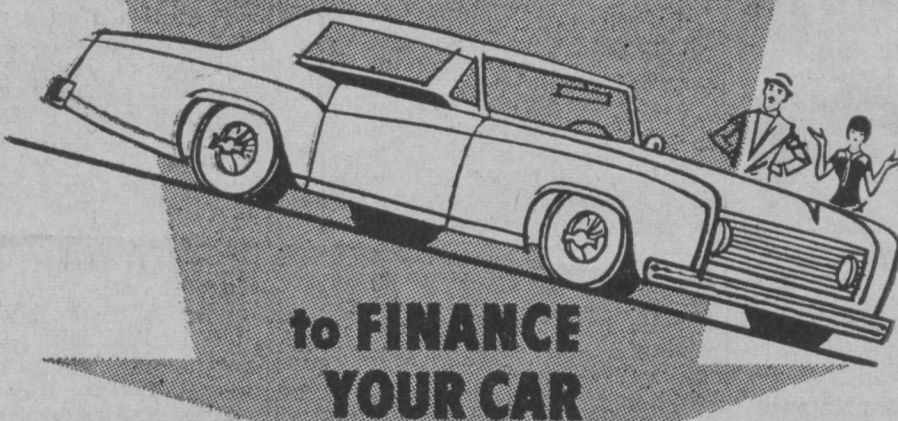
Pat Buch, Prop.

Emmitsburg, Md.

the missing piece your advertising needs!



HOW TO GET THE BEST LOAN



to FINANCE YOUR CAR

JUST STOP BY ANY OF OUR 12 NEARBY OFFICES

FARMERS AND MECHANICS

NATIONAL BANK

EMMITSBURG OFFICE

6 E. Main St.

Phone 447-6134

Emmitsburg, Md.

MAIN OFFICE: Cor. N. Market and E. 2nd Sts. Frederick, Md., 662-4131

CITIZENS OFFICE: Cor. S. Market and E. Patrick Sts. Frederick, Md., 662-4131

FREDERICK SHOPPING CENTER OFFICE: W. 7th St. at Schley Ave., Frederick, Md. 662-4131

FORT DETRICK FACILITY: Fort Detrick, 662-4131

EAST COAST RELAY FACILITY: East Coast Relay Center 662-4131

WALKERSVILLE OFFICE: 19 Penna Ave., Walkersville, Md., 845-6355

BRUNSWICK OFFICE: 1 W. Potomac St., Brunswick, Md. 834-9000

LIBERTYTOWN OFFICE: Libertytown, Md. 898-9119

UNION BRIDGE OFFICE: 18 N. Main St., Union Bridge, Md. 775-2601

MOUNT AIRY OFFICE: 4 N. Main St., Mount Airy, Md. 829-1100

DAMASCUS OFFICE: 9830 Main St., Damascus, Md. 253-3124

Member F.D.I.C.

Looking Ahead

by
Dr. George S. Benson
President
NATIONAL EDUCATION PROGRAM
Searcy, Arkansas

The YWCA and Miss Davis
The National Board of the Young Women's Christian Association has acted on behalf of Angela Davis, Communist revolutionary who seeks to destroy America and all vestige of Christian civilization, and who has been indicted for conspiracy, murder and kidnap in the

slaying of a California judge and the death of three of her comrades. This action dramatizes the power of the Communist worldwide propaganda apparatus to warp reason and attract support from some of the most influential forces in the free world.

Having read a news item in the Communist press extolling the YWCA action, I wrote the national "Y" headquarters for confirmation. Yes, said Edith M. Lerrigo, Executive Director, the National Board of the YWCA has formally "made known to government leaders in New York, California and the U. S. Department of Justice its concern in the case of Miss Davis." We now have written Miss Lerrigo to inquire whether the YWCA has expressed its concern for other persons charged

with such notorious crimes. I have not seen reports of such YWCA actions in the past.

Strange Fellowship

In joining the international clamor of "concern" for Miss Davis, drummed up by the skilled propagandist of World Communism, the YWCA would seem to be prejudicing, not serving, genuine justice and, indeed, practicing a strange fellowship with atheism. Angela Davis, as a proud, dedicated and busy Communist, has condemned religion, Christianity, the Church, the whole idea of an Almighty God. Undoubtedly she has spread her anti-God philosophy to youth, while a secret Communist on the faculty of the University of California and as one of the most widely-known Black Panther missionaries circulating among the Negro masses.

In the December 26 issue of the Communist-supporting weekly newspaper, The Guardian, Angela Davis reveals herself in her true nature, a violent revolutionary. She gave the Guardian an interview from her New York Women's House of Detention cell just before her extradition to California.

Total Overthrow

"My decision to join the Communist party," she says, "emanated from my belief that the

only true path of liberation for black people is the one that leads towards a complete and total overthrow of the capitalist class in this country and all its manifold institutional appendages (Eds. Note: she makes clear in her Communism avowal that this would include the institution of Christianity, the Church) which insure its ability to exploit the masses and enslave Black people." (Note: Communists say: religion is the opiate of the people; it must be obliterated).

"Convinced of the need to employ Marxist-Leninist principles in the struggle for liberation," says Miss Davis, "I joined the Che-Lumumba Club, which is a militant, all-black collective of the Communist Party in Los Angeles committed to the task of rendering Marxist-Leninism relevant to black people. . . . My decision to join the Communist Party was predicated in part on the ties the Party has established with revolutionary movements throughout the world. . . ."

Communist Blacks To Lead

Angela Davis, Communist, says the black masses must be mobilized into a Communist-led force to destroy the capitalist U. S. She says white Communists must be in the army of lib-

eration, but that the vanguard and leadership must be black. "The whole problem of black-white unity is a very tenuous one," says Davis, ". . . and precisely because of the all-pervasive nature of racism, the issue of black-white unity can be resolved only by recognizing the necessity for black people to provide the leadership for the total struggle. . . . It will be imperative for whites to accept the leadership of black people."

Miss Davis reveals in her Guardian interview that George Jackson, one of the "Soledad" convicts for whose release the Communists have conducted a worldwide campaign, is a Communist (his younger brother was killed in the shooting involving here). She said confidently the Communist revolution is coming. "The important thing to realize," she said to her comrades, "that we must do everything in our power to consolidate and solidify a mass movement devoted to struggling . . . with the positive idea of socialism (Communism) as its goal."

In joining the "concern" for this anti-God revolutionary, isn't the YWCA losing its proper direction?

SJC-MSM Prom

Set For New York

The junior class at St. Joseph College is planning their Junior

LEGAL

STATE OF MARYLAND NOTICE OF APPOINTMENT AND NOTICE TO CREDITORS

TO ALL PERSONS INTERESTED IN THE ESTATE OF ROBERT SILAS WRIGHT, SR.

This is to give notice that the undersigned, Ralph Edward Wright, whose address is 10304 Darnestown Road, Rockville, Maryland 20850, has been appointed personal representative of the estate of Robert Silas Wright, Sr. who died on December 29, 1970.

All persons having any objection to such appointment shall file the same with the Register of Wills of Frederick County on or before August 9, 1971.

All persons having claims against the decedent must present their claims to the undersigned, or file the same with the said Register of Wills on or before August 19, 1971.

Any claim not so filed on or before such date shall be unenforceable thereafter.

RALPH EDWARD WRIGHT
Personal Representative
MYERS & HENNING
Attorneys-at-law
414 Hungerford Drive
Rockville, Md. 20850

THOMAS M. EICHELBERGER
Register of Wills

Date of first
publication:
February 19, 1971—3t

We're Glad You're Here! — New Watchword For Courtesy In U.S.

The \$46 billion foodservice industry has thrown its full power into a 1971 program aimed at improving hospitality and courtesy in America.

The multi-million dollar "We're Glad You're Here!" effort was conceived by the National Restaurant Association (NRA) "because the country needs it to counter the tensions which affect us all," said Martin L. Horn, Jr., NRA president.

"An all out effort is called for to brighten the mood of the public," Horn said. "As the nation's hosts, members of the foodservice industry are vitally concerned with the concept of cordiality."

"Our goal is to unite the country's over half a million eating places and their 3.4 million employees, plus civic organizations and many related businesses, in making 'We're Glad You're Here!' seen and heard all over the country literally millions of times."

The campaign features intensive national, regional, and local promotions of "We're Glad You're Here!" in thousands of businesses; contests and educational activities to promote employee courtesy; publicity and advertising tie-ins; and incentives for workers to be more courteous.

Among those taking part in the program are mayors of dozens of major U.S. cities, Discover America Travel Organizations, U.S. Travel Service, state and regional restaurant associations representing more than 120,000 foodservice operations, and many others.



President Nixon has indicated his approval of the drive.

The Chicago-based NRA represents the foodservice industry, the nation's largest employer of service-oriented personnel, and the fourth ranking industry in retail sales.

Horn said there are approximately 394,000 commercial eating establishments, 115,000 semi-commercial, and 32,000 institutional eating places in the United States.

"We are stimulating a groundswell of practicing courtesy in America, starting with the foodservice industry and spreading into many other industries and organizations where hospitality is a major element—such as convention and tourism bureaus, travel organizations, airlines, Chambers of Commerce, almost any type of retailing or service business."

Marching Mothers to Conduct 'Door Count' in Dimes Campaign

By PATRICIA SMITH

Mothers' March volunteers in many parts of the country will perform double duty this year during the annual March of Dimes drive to prevent birth defects. In addition to their traditional neighborhood appeal for funds, they will conduct a rubella "door count" to measure the progress of immunization programs.

The survey is designed to obtain simple data on the number of children, ages one to 12, in each household and how many have been inoculated against German measles. Tally sheets will give health authorities a fair degree of up-to-date information for use in mapping community health needs.

The door count is expected to help stimulate awareness of the need for rubella vaccination as a protection against the tragedy of birth defects, according to W. R. Russell, vice president and director of chapters for The National Foundation-March of Dimes. While not intended as a scientific survey, findings will be instrumental in directing public health educational efforts.

"We consulted various public health officials, including a number of state health commissioners, and all approved," Mr. Russell said. "They agreed that the project will be significant because the results should serve as a general indicator of the level of vaccination."

Nationwide Alert

Since the rubella vaccine was licensed by the federal government more than a year ago, March of Dimes chapters around the country have helped mass immunization. During this time, chapter spokesmen, volunteers and members of their medical advisory committees have worked closely with local health departments, medical societies and school officials in programs aimed at eliminating spread of the dreaded rubella. These community efforts have had effective results in many states, including Maryland,



ON THE MARCH to eliminate the threat of rubella (German measles) to unborn children are thousands of Mothers' March volunteers. The March of Dimes works closely with local health departments, medical societies and school officials in organizing rubella vaccination drives throughout communities.

Texas, Minnesota, Hawaii, New York, Washington, Pennsylvania, California, Tennessee, Mississippi, Utah, Alaska, Georgia, Virginia and Ohio.

However, public health authorities agree that the country still has a long way to go if we are to halt the threat of rubella upon the unborn child. The National Foundation has vigorously encouraged maximum use of the rubella vaccine because of its commitment to the prevention and treatment of birth defects.

The ravages of the last rubella epidemic of 1964-65 destroyed or damaged some 50,000 infants. First-hand knowledge of tragic defects that maimed newborn survivors of the epidemic are seen regularly at many March of Dimes Birth Defects Centers around the country. These children suffer from blindness, deafness, heart defects and other severe handicaps.

Mass Immunity Needed

Guidelines and recommendations for the rubella mass immunization program were developed by the Committee on Immunization Practices of the

Center for Disease Control of the Department of Health, Education and Welfare. They were endorsed by the American Academy of Pediatrics and The National Foundation programs are based on the same measures.

"The public should keep in mind that another epidemic of rubella can be expected within a few years—maybe as early as this spring," warns Dr. Arthur J. Salisbury, NF director of preventive services. "This epidemic and its disastrous consequences can be prevented if enough children get rubella shots."

Although the permanency of immunity conferred by the vaccine is still not known, Dr. Salisbury emphasizes that we cannot afford to determine this before undertaking mass vaccination campaigns because the present vaccine is our only alternative to another devastating rubella epidemic.

Public health education efforts on such critical issues as rubella vaccination are an important element of the year-round activities carried out by The National Foundation.

From which they will hold on February 27 in cooperation with Mt. St. Mary's junior class at the Summit Hotel Ballroom in New York City. This is the first prom to be co-sponsored with the Mount. A series of fund-raising activities, such as pizza sales and raffles, are being carried out in order to raise the money necessary for the Prom. Patrons and local sponsors are also assisting the class in their plans.

Miss Nancy Nugent of Baltimore, is president of the junior class at St. Joseph's. Other junior class officers are Miss Mary Louise Kincaid, Hauppauge, N. Y., vice president; Miss Sandra Cardella, Kenilwood, N. J., secretary;

Miss Marcia C. Minton, Trenton, N. J., treasurer; and Miss Carol Rupprecht, Berkeley Heights, N. Y., and Miss Joanne O'Donnell, Gloucester, N. Y., social representatives.



Frank DeLucia
THE AMERICAN TRUCKING INDUSTRY'S
DRIVER OF THE YEAR

Tips from a Pro

WHEN DRIVING IN FOG OR MIST



YOUR INCOME TAX

INDIVIDUALS — FARMERS — BUSINESSMEN

Private, Confidential, Courteous Service

All Welcome

Monday Through Saturday — 9 A.M. to 9 P.M.
ALL FORMS TYPED IN DUPLICATE

LAWRENCE G. HARNE

PHONE 271-2119

THURMONT, MD.

31 YEARS OF EXPERIENCE MAY SAVE YOU MONEY!

Parking Lot Installed For Your Convenience

Beer Wine Whiskey

You'll Find Everything For That Party
Right Here On Our Shelves

Village Liquors

Ralph F. Irelan, Prop.

"Always in the Best of Spirits"

Phone 447-2922

Emmitsburg, Md.

Sure Sign of Value—

A-1

USED
CARS

1968 Mustang 2-Dr. Fastback; 4 Spd.; R&H.
1968 Ford Custom, 2-Dr., V-8; R&H.
1967 Pontiac GTO Conv.; R&H; P.S.; Auto.
1966 Chevrolet 4-Dr. Wagon; Fully Equipped.
1965 Ford Galaxie XL 2-Dr. H.T.; R&H; P.S.; Auto.
1965 Fairlane Sta. Wagon, V-8; Auto.; R&H.
1964 Ford 4-Door Sedan, 6 Cyl.; S.S.; R&H.
1964 Chevrolet 4-Dr. Wagon; R&H; Auto.; Very Clean.
1964 Corvair Convertible; Bucket Seats; R&H.
1963 Chevy II 4-Dr. Sedan, 6 Cyl.; Extra Clean.
1963 Falcon Futura 4-Dr.; Extra Clean; Fully Equipped.

1967 Ford F100 1/2-Ton Pickup; R&H.
1967 Ford F250 3/4-Ton Pickup; R&H; Low Mileage.
1965 GMC 1/2-Ton Pickup; 8 Ft. Body.

Sperry Ford Sales

PHONE 447-6171

EMMITSBURG, MD.

NOW! HOME STORAGE AVAILABLE



Reg. Gas
Premium Gas

CHARLES "DICK" KOONTZ

—Serving Northern Frederick County—

PHONE EMMITSBURG 447-2561

MID-WINTER CHECK-UP

Good Winter Tires? Better
Check Our Prices First!

Let Us Check Your Battery, Plugs,
And Ignition Points
Mufflers — Fan Belts
Tires — Windshield Wipers

KEEPERS ESSO STATION

Charles E. Keepers, Prop

EMMITSBURG, MARYLAND

FOR PRESCRIPTION SERVICE

PEOPLES DRUG STORE

GETTYSBURG, PA.

Phone 334-2916

- Sick Room Supplies
- Greetings Cards
- Cosmetics



OPEN LINE

By
Congressman Goodloe Byron
Maryland—Sixth District

This regular column serves as another vehicle to keep in touch with all segments of my constituency. It is an open invitation for you to question me on issues, let me assist you with your problems, request information or comment on whatever happens to be on your mind. Letters should be sent to me, c/o U. S. House of Representatives, Washington, D.C. 20515. While space is obviously limited for printing all replies, I shall make every effort to answer each person who contacts me.

The following questions were typical of those asked me on a recent district tour:

What is your interest in the Monocacy Battlefield?

I am planning to submit legislation this year that would involve the Monocacy Battlefield into the national park system. We already have an excellent park system being developed in the flood plain of the Monocacy River—the Pinescliff Park recreational facilities, for instance—and the battlefield would be a natural tie-in with this.

Are you going to send out a questionnaire to people in the district?

I have included a questionnaire in my first newsletter, which everyone in the district should have received by now. I hope each of you will start helping me meet my responsibilities by filling out and returning the questionnaire to me at your earliest convenience.

What are you doing about Fort Detrick?

Fort Detrick is not something one individual can hope to solve alone, but I am making every effort to do my part in keeping the scientific team together. I have conferred with many staff members at Detrick and the Pentagon. And recently, Sen. Mathias, Sen. Beall and I met here in Washington with Fort Detrick civilian employees to discuss stop-gap measures and an interim plan to hold the Detrick research community together until a long-range position for the post can be effected.

How often do you plan to tour the district?

I am planning to visit all areas of the district on a regular monthly basis. In the past few weeks I have made myself available at the post offices in Oakland, Luke, Midland, Frostburg, Lonaconing, Westernport, Cumberland, Hancock, Hagerstown, Halfway, Thurmont, Williamsport, Frederick, Taneytown, Westminster, Gamber, Eldersburg, Ellicott City, Catonsville and Randallstown. During March I will again visit Cumberland, Hagerstown, Emmitsburg, Frederick, Westminster, Ellicott City, Randallstown and Catonsville.

Can you help our school group with a tour of the Capitol?

With our district being so close to the Nation's Capital, it is my sincere desire to welcome and encourage my constituents to plan a visit. Clubs, school groups, Scouts and other interested parties need only call or write my office for assistance. The telephone number is (202) 225-2721.

What can be done to help alleviate the high unemployment rate in the Sixth District?

I believe that nothing could be more vital to the immediate economy of Western Maryland than congressional approval of additional funds for the SST, the continuing operation of Fort Detrick, a lowering of interest rates and a relaxation of tight credit policies. In the weeks ahead I will be addressing myself to many of these points as such legislation comes before the House.

Have you received your committee assignment as yet?

I will be serving on the Interstate and Foreign Commerce Committee which has jurisdiction in matters relating to transportation, communications, civil aero-

navics, interstate oil compacts, interstate generating power, securities and exchanges, public health and the Weather Bureau. I'm quite honored because it was my first preference and because it has a great deal of relevance for the Sixth District. Significant bills are always coming before this committee and I look forward to being actively involved in helping to shape such legislation.

INCOME TAX TIPS

Q. Is it true IRS will figure the tax and the retirement income credit for taxpayers this year?

A. Yes, as long as certain conditions are met. Briefly, these are that your income is \$20,000 or less and consists entirely of wages, salaries, tips, dividends, interest, pensions and annuities. You must also take the standard deduction.

The IRS will compute your tax if you meet these conditions. Fill in the proper lines as indicated on page 2 of the instructions and mail your return to the IRS Service Center. Any retirement income credit you are entitled to will also be computed where the proper lines on Schedule R are filled in. Be sure to attach Schedule R and other necessary Schedules to your Form 1040.

After we compute your tax, you will either receive a refund or bill for additional tax due.

Q. Taxes were withheld from a part-time job I had last spring. I don't have to file a return so how do I get this money back?

A. A return must be filed to obtain a refund. Attach W-2 statement showing the wages paid and taxes withheld to the Form 1040 you complete and send it to the Internal Revenue service center for your area.

Q. The address is wrong on my blue address label. What should I do?

A. Make the correction right on the label and place it on the front of the form you file.

Q. What's the change in the handling of crop insurance proceeds for farmers?

A. A cash basis farmer is usually required to report income the year it is received. Under the Tax Reform Act of 1969, however, a farmer receiving insurance compensation for damaged or destroyed crops may elect to defer reporting the proceeds until the year following the loss if the income would otherwise have been reported in any tax year following the year of destruction or damage.

Q. What's the maximum social security tax for 1970? I had two jobs and I think I paid too much.

A. The maximum social security tax is \$374.40 for 1970. If more than that was withheld from your wages because you had more

than one employer last year, enter the excess on line 62 of your Form 1040. This is explained in the 1040 instructions.

Q. Can you include the cost of a house hunting trip with other moving expenses for income tax purposes?

A. Yes, under certain conditions.

For details on moving expenses, send a post card to your IRS district office and ask for Publication 521 and a copy of Form 3903. This form must be completed and sent in with your return if you claim this deduction.

Q. My mother just started collecting her social security pension. Does she have to pay tax on it?

A. No, social security benefits are not taxable and do not have to be reported.

Q. I drive several hundred miles a week going back and forth from my home to work. Can I deduct anything?

A. Commuting costs are a personal expense and not deductible. However, you may deduct the state and local gasoline taxes you pay as a result of this and other personal driving.

A convenient table to help you determine the amount of your gas tax deduction may be found on

STEEL WALL SAVES ROAD

Port Clinton, Ohio—(HK)—Driving along scenic Lake Erie on State Highway 163 in Ottawa County, you can at one point come as close as 20 feet to the shoreline. Since the area is subject to the ravages of northeastern winds which roar across the Lake, highway engineers had to come up with something that would save the roadway. They erected a 150-foot-long, 10-foot 8-inch-high bin-type retaining wall. Made from strong, durable galvanized steel in 1939, it has been on the job ever since.

12-FOOT WAVES

Over the years, the strength of the steel wall conquered fighting winds, waves and ice. In April 1969, the Port Clinton area was hit by one of the most severe northeasters in its history. Twelve-foot waves washed huge boulders up on either side of the protected road section. After the roadway was cleared, according to the County Engineer, John C. Papcun, the wall area remained in excellent condition.

For the residents of Ottawa County, this means lower highway maintenance costs. For those who travel Route 163, they enjoy a continued scenic and safe drive along Lake Erie.

Page 8 of the Form 1040 instructions. It is based on the tax rate in your state, number of miles driven, and type of car.

Q. Do the tax tables in the instruction book include the surcharge?

A. No, after you have determined the amount of your tax from either the table or the schedules, you will have to add the surcharge. Use the surcharge tables in the 1040 instructions to de-

termine the surcharge.

Q. Where can I buy a copy of your income tax guide?

A. A copy of Your Federal Income Tax, Publication 17, may be purchased for 75c and is sold at our offices. The Tax Guide for Small Business, Publication 334, costs 75c and is sold at our offices. They may also be purchased from the Superintendent of Documents, U. S. Government Printing Office, Washington, D. C. 20402.



SKI FAMILY'S CHECKLIST

Here's a skier's checklist that will save you and your family the trouble, time and expense of getting to the mountain and realizing you left clothing or equipment at home.

— Prepare individual lists of clothes and equipment for each member of the family. This precaution makes each person responsible for his belongings and helps you make a quick last-minute account of everything that will be needed.

— Check condition of ski clothing and equipment before heading for the hills. Everything going to the mountain should be in usable condition before leaving home. I ski on Fischer Imperators which feature a tough, hard base of P-Tex 2000. But chips and gouges are a problem with the bottom of many skis. Just remember that minor ski repairs and adjustments, such as edge sharpening and bottom patching, consume valuable ski time while at the mountain and can be done by your local ski shop or at home.

— Even binding release adjustments — once made by a combination of intuition and luck — can be done at home with the aid of the Lipe Skier's Release Check. It's a home version of the machine used by professional ski shops, which determines the correct setting for all release bindings by considering the skier's age, weight and ability.

— Take all accessories with you. Quick weather changes can mean a change of goggles, lenses or wax. Extra socks, gloves, hats, safety straps—even a complete change of clothes—fit conveniently into a small carrying bag, like the Allsport Carry-All, specially designed to carry boots, too.

— Be sure the ski rack is in good condition. Replace cracked suction cups or broken straps.

— Secure all safety straps, binding cables and pole straps, or they will chip your car's paint and cause irritating noises when you drive. And be sure to close the rack before you leave!

— Know weather and snow conditions before leaving home. This will help you pick the best area and will prepare you for an enjoyable day on the slopes.

— Have a supply of quick energy foods on hand. Foods like chocolate, raisins, and gum, give skiers quick energy when they need it. They also make good snacks for the family en route to the area.

— Once at the area, keep all equipment in a central place convenient for all members of the family. This helps prevent misplaced and lost equipment.



Steve Sherlock

HEALTH & SAFETY

Mainly for Mothers

by Carol Hart

CONTROLLING OUR ENVIRONMENT

It seems that almost every day new products appear on the supermarket shelves to clean drains better, relieve headaches more effectively, polish furniture brighter, bleach clothes whiter or kill more household bugs. These and many other new products will necessarily have some effect on our constantly changing environment.

It is up to the "men in white jackets"—scientists, engineers and environmental control officials—to determine that new products can be used by the public without damaging the air we breathe, the water we drink or the land we enjoy. But it is up to every housewife who brings these products home from the supermarket to protect the family's health by treating them with intelligence and handling them with care.

No small child can be expected to observe a warning printed on the label of a medicine bottle or can of cleanser. Even adults jeopardize the safety of their home environment by ignoring instructions, and so accidental poisonings are a major problem. The Council On Family Health, sponsored by the manufacturers of medicines as a public service, has these suggestions for keeping the home safe:

- Always keep potentially hazardous substances out of the sight and reach of children.
- Always read labels on containers, especially before taking or administering medicines.
- Never tell a child that medicine is "like candy." The lesson may come back to haunt you.
- Keep a safe, neat medicine



cabinet with clean, easy-to-read labels and discard out-of-date medicines before they become a hazard.

A family had no direct control over the air or water that enters the home. But it can control the way in which products are used and stored around the house. Protect your family by guarding against accidents in the home environment.

SEED-TAPE EASES PLANTING



Easier gardening in 1971 will result from use of a new aid to the home gardener—Seed-Tape—embedding uniformly spaced seeds of 18 varieties of flowers and vegetables.

Eighteen aids to easier, faster planting—that's Ferry-Morse Seed Company's score for 1971. Eighteen varieties of flower and vegetable seeds, encased in water-soluble, chartreuse green Seed-Tape.

With this remarkable new development, you simply prepare furrows to proper depth, lay in the Seed-Tape, cover and insert free, handy row marker. It's that simple! You get uniform planting and you can plant in straight lines or designs.

Seed-Tape's chief use to date has been for commercial crops, to reduce poundage of seeds required and to lower costs of planting and care. Growers find planting quicker and easier, thinning minimized since seeds are evenly spaced, harvest more uniform because all seeds are covered with the same depth of soil.

Seed-Tape has been tested in 36 states and 5 countries, in plantings of more than 100 varieties of vegetables and flowers, representing 30 species.

Flower beauties include: Royal Carpet alyssum, Crego aster, Sparky and Valencia marigolds,

Dwarf Cherry Rose and Jewel nasturtiums, Happy Talk petunias, double portulacas, Cactus Flowered and State Fair zinnias and pansies.

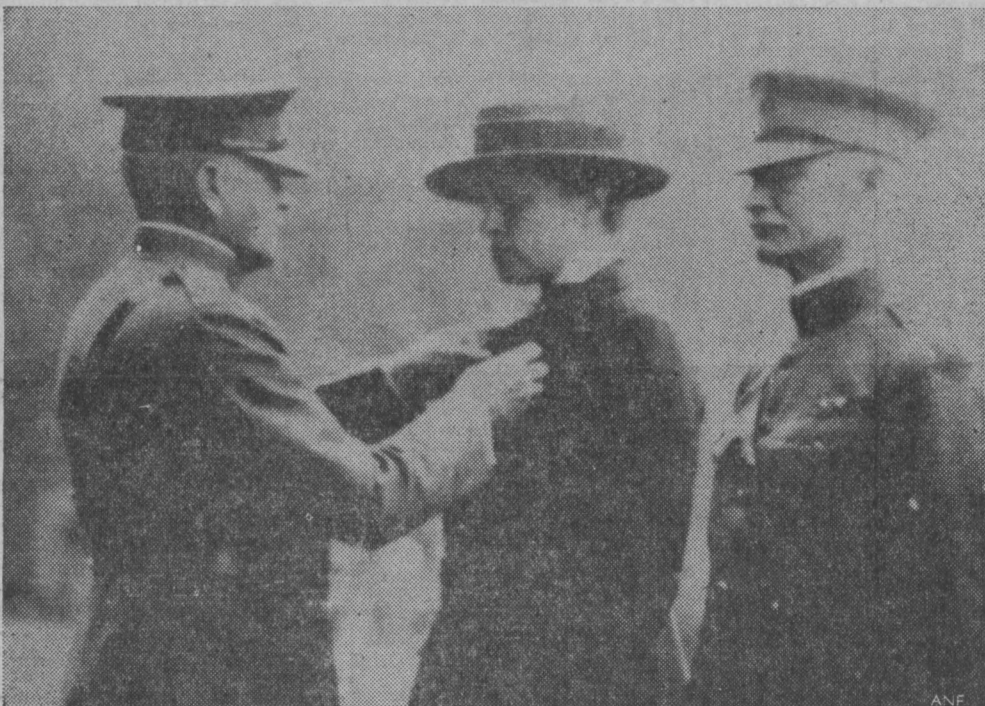
Asters, Jewel nasturtiums, petunias and both zinnias are in mixtures of all their delightful colors.

Seed-Tape vegetables, to be found in special red and yellow striped displays are: Detroit Dark Red beets, Danvers Half Long carrots, Black Seeded Simpson and Prizehead lettuces, Evergreen Bunching onions, Curled parsley and Early Scarlet Globe radishes.

The white cardboard row marker in each attractive package, around which the Seed-Tape is wound will, when you letter it, remind you what kind of seeds you planted and where. The 69 cent price for 15 feet of Seed-Tape will enable you to plant your entire garden the Seed-Tape way.



WASHINGTON, D.C. 1970—Capt. Jeanne Phillips, right, tends to the shoulder cast of an injured soldier with the help of an enlisted medical specialist at Walter Reed General Hospital. Captain Phillips is a nurse at the hospital.



FRANCE 1919—Miss Julia Stimson, center, receives the Distinguished Service Medal from General of the Armies John J. Pershing, left, in recognition of her nursing services during World War I with the American Expeditionary Forces. An Army Nurse Corps pioneer, Miss Stimson (later Colonel Stimson) served as corps superintendent from 1919 to 1937.

GET A DEAL ON THE 1971 CHEVROLET

And On OK Used Cars & Chevrolet Trucks

WANTZ CHEVROLET INC.

Phone 756-6006

Taneytown, Md.

COMPLETE AUTO AND BODY REPAIR

Service Department Hours

7:30 A.M.—9:00 P.M., MONDAY—FRIDAY
5:30 P.M.—9:00 P.M., THURSDAY EVENING

Sales Department Hours

9:00 A.M.—9:00 P.M., MONDAY—FRIDAY
9:00 A.M.—5:00 P.M., SATURDAY

KEROSENE



MOBILHEAT
WITH RT-98

THE FUEL OIL FOR EASY HEATING
Automatic Delivery—24-Hour Service

"Serving Northern Frederick County"

LEWIS E. HAHN

THURMONT, MD.

PHONE 271-2512

USED CAR SPECIALS

- '69 Ford 4-Dr. H.T. Galaxie 500; RH&A; P.S.; Ex. Cond.
- '68 Ford Custom 500 4-Dr.; RH&A; P.S.; Air Cond.
- '68 Plymouth Valiant 2-Dr. "6"; Stick; R&H; Good Economy Car.
- '67 Chevrolet Bel Air 4-Dr.; RH&A; Air Condition.
- '66 Mercury 4-Dr. Wagon; RH&A; P.S.; P.B.
- '66 Chevrolet V-8, 4-Dr.; Stick; Bel Air; R&H; Air.
- '66 Ford Custom 4-Dr.; 6 Cyl.; Automatic.
- '66 Pontiac Catalina Station Wagon, RH&A; P. S. Luggage Rack.
- '66 Ford Galaxie 289 Convertible; RH&A.
- '65 Impala 2-Dr. V-8; 4-Speed; R&H.
- '65 Falcon 4-Dr. "6"; R&H; S.S.
- '64 Galaxie 9-Pass. Wagon; RH&A; P.S.
- '64 Chevrolet 1/2-Ton Pickup, Fleetside Bed with Camper; Good Condition.
- '64 Olds H.T. 4-Dr. Sedan; RH&A; P.S.; P.B.
- '64 Impala 4-Dr. Sed.; Automatic; Air; P.S.; R&H.
- '64 Dodge 4-Dr.; R&H; Power Steering.
- '63 Ford "6"; Stick; Heater.
- '62 Buick Electro, 4-Dr., Hardtop; R&H; P.B.; P.S.
- '62 Falcon 4-Dr. Wagon; Stick; Heater.
- '61 Econoline Van; Good.

IF YOU NEED A SPECIAL CAR CONTACT

EMMITSBURG AUTO SALES

MARSHAL SANDERS

PHONE 447-2176

EMMITSBURG, MD.

Emmitsburg Chronicle

EMMITSBURG, FREDERICK COUNTY, MARYLAND
Published weekly on Friday by the CHRONICLE PRESS INCORPORATED, 107 South Seton Avenue, Emmitsburg, Maryland 21727. Telephone 361-447-2333.

CHARLES ARTHUR ELDER, Editor-Publisher

All Communications and Checks intended for this Paper should be addressed and made payable to the CHRONICLE PRESS INCORPORATED, Emmitsburg, Md. 21727.

Copy for Advertisements must be received in this Office not later than Tuesday morning to insure publication in the current week's edition. Advertising rates furnished upon request. Subscription rate, \$4.00 per year in advance.

Entered as Second Class Matter at the Postoffice at Emmitsburg, Maryland, under the Congressional Act of March 3, 1879.

MEMBER
NATIONAL NEWSPAPER
Association - Founded 1885

Member
Maryland-Delaware
D.C. Press Assoc., Inc.

BUSINESS and the STOCK MARKET

by BABSON'S REPORTS INC.
Copyright 1971

Stock Split Activity To Increase

By Babson's Reports Incorporated, Wellesley Hills, Mass., February 18, 1971. Last year, due to the generally poor stock market atmosphere, stock-split activity was at one of the lowest levels in over a decade. The peak period for stock splits was in 1968-1969 when corporate earnings were generally rising, business for the most part was exceptionally good, and the stock

market was soaring. None of these factors was present last year so stock splits slackened notably.

More Favorable Conditions

This year we expect that general economic conditions will be better than in 1970, and, thus, corporate profits are likely to be higher. Furthermore the stock market, which has already had a sharp advance so far this year, should hold up reasonably well—barring some very adverse unpredictable event. If the above factors come to pass, then there will most likely be a good increase in stock-split activity this year as compared with last year.

Actually, some well-known companies have already announced that they plan to split their stocks if holders approve. These

include General Electric, Manufacturers Hanover Corp., and Texas Oil and Gas. Additionally, Walt Disney and General Foods are planning to pay 100% stock dividends in March. Many others are likely to take similar action as their stocks move into higher price zones.

Improving The Marketability

There are various reasons why a corporation may decide to split its stock. However, of primary importance is the desire to improve the marketability of the company's shares by broadening the ownership base. A stock split accomplishes this as it increases the number of shares available and lowers the price of such shares. Thus a larger number of investors can participate in company ownership. As a general rule smaller investors tend to avoid higher-priced issues as they are not able to buy in round lots and are unwilling to buy odd lots because of the most differential. Selecting The Candidates

In recent years the most popular price level for stocks has been between \$30 and \$50 per share. More investors have purchased a meaningful number of shares in this general range than at higher prices. Thus good-grade issues priced at from \$60 to \$100 per share or high-

er can often be considered as stock-split candidates. However, there have also been many instances when stocks priced under \$60 have been split. The split ratio will not necessarily be 2-for-1, but may be any multiple or percentage.

Stock splits are usually accompanied by a dividend increase. This is almost always the reason why a stock invariably advances in price upon the announcement of a stock split.

Below we have listed some of the companies that appear to be in a position either to split their stock or to declare important stock dividends this year. They will be listed by company, 1970-71 High-Low and Recent Price.

ARA Services	\$129 - 74	\$129
Burroughs	173 - 79	126
Carnation	118 - 80	117
Coca-Cola	88 - 63	87
Diebold	73 - 49	67
Dome Mines	68 - 45	64
DuPont	148 - 93	143
Getty Oil	82 - 37	82
IBM	387 - 219	339
Kerr-McGee	124 - 59	118
Lilly (Eli)	116 - 78	111
Louisiana Land & Exploration	73 - 35	74
Lubrizol	81 - 39	80
Merck	113 - 74	98
Mission Corp.	118 - 68	114

OFF AND RUNNING by John I. Day

Horses Galore, What Color?

Some time back the Thoroughbred Racing Association's newsletter, TRA News, printed one of those "slips that pass in the night" from an Albuquerque, New Mexico newspaper. It read: "Pancho Villa had 500 horsemen with him—all riding on a horse from the Terrazas Ranch" and the TRA's headline comment was "Trojan Horse had nothing on this Mexican Steed."

This brought an interesting anecdote from Mr. Campbell H. Brown of the Thoroughbred Club of Tennessee who wrote:

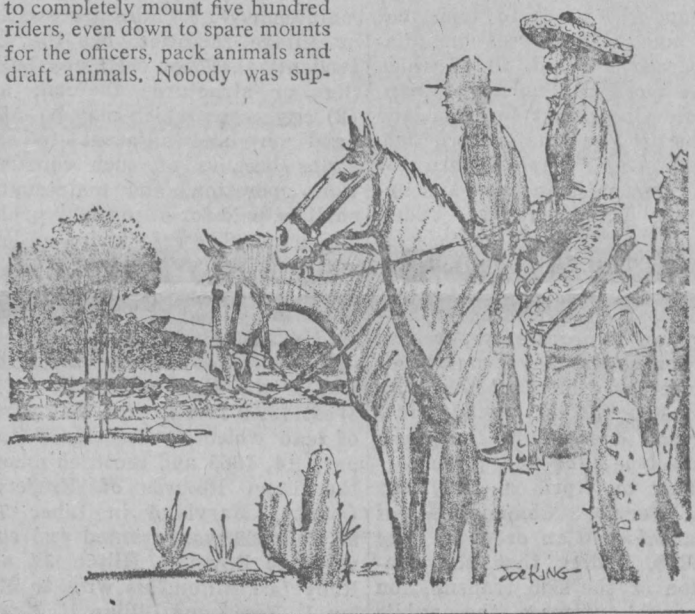
"It would have been no problem at all for the Terrazas spread to completely mount five hundred riders, even down to spare mounts for the officers, pack animals and draft animals. Nobody was sup-

posed to know where the boundaries of the ranch were and, as far as the number of horses owned by the ranch was concerned, nobody was imprecise enough to ask."

Mr. Brown further noted that on an occasion, back in the days when the U.S. Cavalry operated on oats instead of high octane fuel, an American Remount purchasing officer called on General Terrazas with a question:

"Could the General, on short notice, provide the United States Army with as many as 5,000 horses?"

"But of course," said the General, "What color?"



TWIN WINNERS



Two pretty, pert little zinnias, Peter Pan Pink and Peter Pan Plum, are both gold medal winners for 1971. Plant them together in your garden for an outstanding show.

Two little zinnias have broken a record! For the almost 40 years that All-America Selections has operated test gardens in many states and several countries, that judges have observed and scored thousands of entries in the trials, none has received so high a score as Peter Pan Pink and Peter Pan Plum. Both are gold medal winners.

They're dwarf, they're decorative and they're delightful. Except for flower color they are twins—dwarf, bushy, very early to start blooming, free-flowering all summer and "self-cleaning" because the new leaves cover the older flowers. Both are first generation hybrids, grow from 10 to 12 inches tall, have blooms from 3 to 4 inches in diameter and start to blossom when only 6 inches high.

Even their colors contrast beautifully although you'd never guess it from the written description. Peter Pan Pink has coral pink blossoms which become two-toned as they age; salmon-rose in the center while the outer petals retain their coral pink hue. Peter Pan Plum, striking

when planted with Peter Pan Pink, has flowers described variously as lavender-rose or rosy purple, in other words, a believable plum color.

Petals of flowers of both varieties are slightly curled and the flower forms vary from plant to plant; some are cactus type with pointed petals, some resemble dahlias in their fullness and others have flatish blooms.

Here are two zinnias that will perform well in pots or planters, may be massed in beds or borders or even used as hedges. To see them is to wish you had them in your garden. So order seeds early for the supply of seeds of All-America Selections winners never is enough to go around.

Revlon	74 - 47	73
Schlumberger	98 - 52	98
Sears, Roebuck	82 - 51	81
Simplicity Pattern	100 - 63	100
Stand. Oil (Ohio)	86 - 51	81
Superior Oil	188 - 91	183
Warner Lambert	76 - 52	76
Whirlpool	79 - 45	75
Xerox	116 - 65	96

Your Maryland Tax

By LOUIS L. GOLDSTEIN
Comptroller of the Treasury

Your Deductions and Tax Credits

Perhaps there may be some confusion in the minds of many taxpayers between deductions and exemptions. Deductions mean the regular deductions allowed all taxpayers by both the Federal and State Governments, such as contributions, interest paid, taxes, medical expenses, etc. You may itemize your deductions or you may use the State's Standard deduction. If you have legitimate itemized deductions in excess of the allowable Standard deduction, then it is to your advantage to itemize them. You may itemize deductions on your Maryland return only if you itemized deductions on your Federal return.

The Maryland Standard deduction is equal to 10 per cent of the total Maryland income, to a maximum of \$500 for each taxpayer. On a joint return of husband and wife the Standard deduction is computed on the separate income of each taxpayer—10 per cent of the separate income not to exceed \$500 to each. One-half of the income derived from securities, bank accounts, real estate, etc., which are registered or titled in joint names of husband and wife is considered the separate income of each.

If you itemize deductions on your 1970 Federal return then the same items and amounts of each may be claimed on your Maryland return, with but one exception—You are not allowed to deduct the Maryland and Local Income Tax on your Maryland return. After you have entered your items of deductions in Schedule B, Page 2 of the Maryland form 502 enter the total on Line 6, you then subtract the State and Local Income Taxes which are included on Line 2 of Schedule B. Credits—there are only two tax credits applicable to the Maryland

return and these apply to a few Maryland taxpayers. The tax packet contains Form 502 CR, the schedule in which the credits are computed.

If you pay income tax to another State as a non-resident thereof and that State allows you no credit for the tax paid to Maryland you should complete the tax credit schedule and submit it with your Maryland return. You must, also submit a copy of the return filed by you to the other State.

The personal property tax credit is applicable only to persons engaged in a trade or business. It is the tax paid to the State on equipment, inventories, etc., used in the trade or business.

Bear in mind that it is only the State portion of the personal property tax and not personal property tax that may have been paid to a County or municipality. When this credit is claimed, a copy of the personal property tax payment receipt must accompany your return.

In 1969 Japan's gross national product totaled \$166.4 billion.



WITCHCRAFT

WON'T
WORK
on
your

INCOME TAX

But WE WILL! Taxes are tricky business, but our years of experience have provided us with all the magic formulas. Avoid toil and trouble. Let BLOCK brew up your tax return! It's a good place to place your confidence.

BOTH
FEDERAL
AND
STATE

\$5
UP

GUARANTEE
We guarantee accurate preparation of every tax return. If we make any errors that cost you any penalty or interest, we will pay that penalty or interest.

H.R. BLOCK Co.
AMERICA'S LARGEST TAX SERVICE WITH OVER 5000 OFFICES

Northwest	Downtown	Southwest
Frederick Shopping Center	223 N. Market St.	Prospect Shopping Center

Weekdays 9 To 9; Saturday and Sunday 9 To 5—662-6354

NO APPOINTMENT NECESSARY



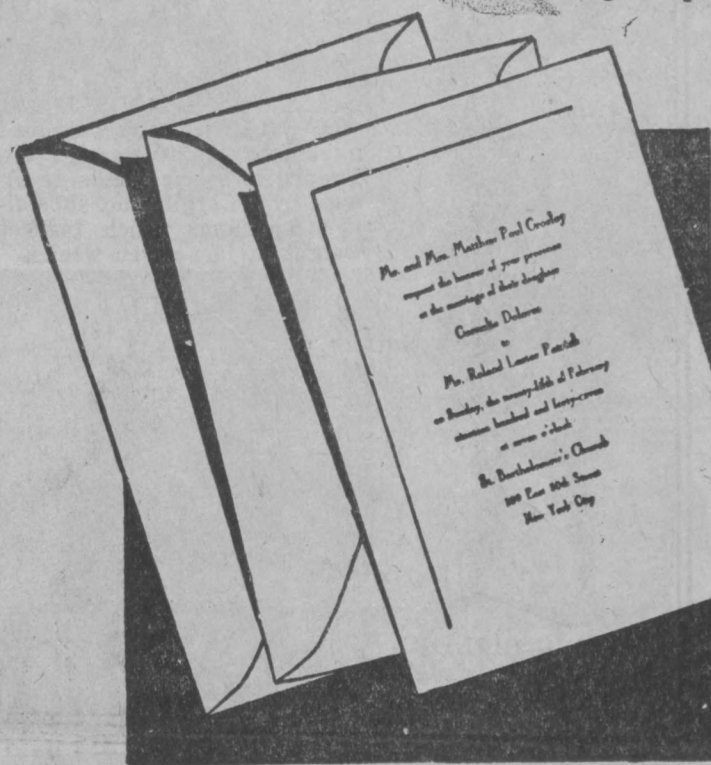
WEDDING INVITATIONS

and announcements...

"The Flower Wedding Line"

... created by REGENCY

Each distinctive invitation thermographed on 25% rag china-white vellum paper, giving you fine raised lettering that speaks of the highest quality.



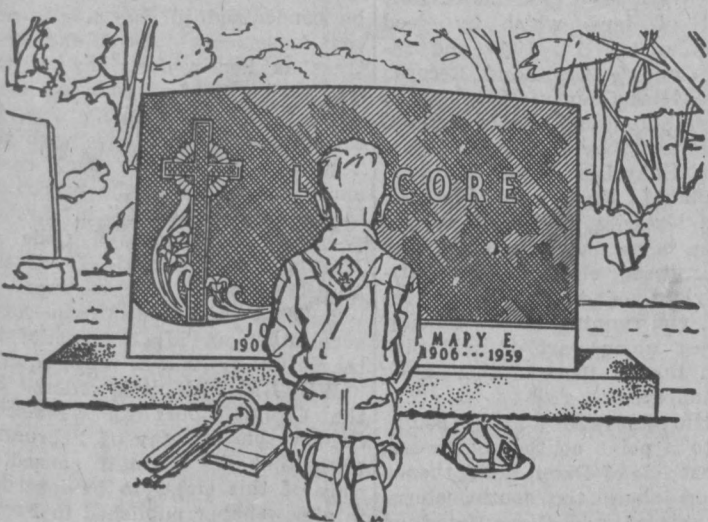
Your choice of SIXTEEN individual TYPE STYLES
The most popular selections shown below.

Also matching reception cards, response cards, thank you cards, at home cards and informals. Come in today and make your choice from our "Flower Wedding Line" catalog.

—2 WEEKS DELIVERY ON ALL ITEMS—
CHRONICLE PRESS INCORPORATED

107 South Seton Ave.

Emmitsburg, Md.



What joy and triumph, after all, to be sincerely honored by the ones we loved

Your Local Rock of Ages
Authorized Dealer

OFFICE-SHOP-DISPLAY OPEN:

Mon. thru Sat., 8 A.M. to 5 P.M.

Evenings & Sun. by Appointment

ROCK OF AGES

Your Authorized Rock of Ages Dealer

400 West Middle Street Gettysburg, Pa.
Phone 334-1413

A beautiful woman is one you notice; a charming woman is one who notices you.—Globe, Mason City, Ia.

NOTICE TO BIDDERS

The Board of Education of Frederick County, 115 East Church Street, Frederick, Maryland, invites bids on supplying and delivering twenty (20) school bus chassis and twenty (20) school bus bodies.

Specifications and proposal sheets may be obtained at the Board of Education Office.

Sealed bids will be received at the Board of Education Office until 3:00 P.M. (EST), March 2, 1971.

The Board of Education reserves the right to reject any or all proposals and to waive informalities.

BY ORDER OF THE BOARD OF EDUCATION OF FREDERICK COUNTY.

JOHN L. CARNOCHAN, JR.
Secretary-Treasurer

Bid #71-T-1 1t

BUSINESS SERVICES

PATRONIZE our advertisers. These firms are reliable and have proven through the years that they handle only quality products and offer skilled professional service and advice to their patrons.

THE GAS SERVICE PEOPLE PREFER



THE MATTHEWS GAS COMPANY

EMMITSBURG - THURMONT

TOPPER Insurance Agency

Est. 1953

Auto - Homeowner's
Casualty - Accident and
Health - Hospitalization

OFFICE AT HOME—MT. RD.
Phone 447-6174 — Notary
—No Parking Problems—

Hanover Maternity Shop

Complete Line Of
MATERNITY WEAR
Infant Wear To T-4
Danskis Leotards & Tights
Shower Gifts
Selva Dance Footwear
41 Frederick St., Hanover, Pa.

LIBRARY HOURS

Mon., Tue., Wed., Fri.—2:30-5
Thurs.—2-5 — Sat. 9-12
Evenings: Mon., Tue., Wed. &
Thurs.—7-9

Coffman Jewelers

16 Baltimore St.
Gettysburg, Pa.

OMEGA WATCHES
(ORANGE BLOSSOM
DIAMOND RINGS)

DR. R. P. KLINGER, JR.

Optometrist

19 East Main Street
EMMITSBURG, MD.

Eyes Examined - Glasses Repaired
Complete Optical Repairs

HOURS
MONDAY: 6:30 p.m. to 8:30 p.m.
(Other Evenings By Appointment)
PHONE
WESTMINSTER TI 8-8340

WILSON Funeral Home

EMMITSBURG, MD.

Phones:

Emmitsburg 447-6244

Fairfield 642-6642

For Expert Oil Burner Service Call

LEWIS HAHN
OIL BURNER SERVICE

Phone 271-2512 - Thurmont

IRS Warns Against Score Advertising

Maryland and District of Columbia taxpayers were warned this week against misleading newspaper, radio, and TV ads conveying the impression that the tax law greatly complicates their 1970 returns.

Irving Machiz, District Director of Internal Revenue for Maryland and the District of Columbia, said the ads placed by some commercial preparers of tax returns also picture the Form 1040 as extremely complex so as to discourage taxpayers from attempting to fill out their own returns.

Mr. Machiz said the IRS has tried to make improvements in the form and in filing procedures

in response to numerous suggestions from taxpayers, lawyers, accountants, and others. In addition, the IRS has this year offered to figure the income tax and retirement income credit for up to 30 million taxpayers filing 1970 returns.

Having IRS figure the tax could reduce the largest single type of error made by taxpayers, selection of the wrong tax table or rate schedule, as well as help elderly persons with retirement income credit calculations, Mr. Machiz said.

Other changes made in the 1970 forms and schedules have resulted in a smaller tax package for most taxpayers, Mr. Machiz explained. The basic package sent to 50 million people contains 24

pages, compared to 32 pages last year. In addition, the instructions will not appear on the backs of the various schedules but will be printed in a numbered and indexed booklet located in the center of the tax form package.

Taxpayers should also be careful of "guarantees" offered by some commercial preparers of returns that make it appear that they will represent the taxpayer in any subsequent audit, Mr. Machiz said. Generally, only attorneys, CPA's,

and those who, by demonstrating their qualifications, are enrolled for practice, can represent a taxpayer before the IRS. Taxpayers should be sure of just what is meant by a "guarantee" offered by a preparer.

Mr. Machiz said that if a taxpayer employs a commercial preparer to fill out his return, he should select a reputable one. Regardless of who fills in the form, the taxpayer is responsible for the accuracy of the return.



Capitol Comment

By Charles McC Mathias
U.S. Senator

Senate Reform Gains

The chaotic closing days of the 91st Congress brought forth outraged cries for reform from the press, the public and members of Congress themselves. Even President Nixon expressed his deep disappointment at what he believed to be the failures of the last Congress to meet its legislative challenges. One thing has been made very clear as a result of this outpouring of opinion on Congressional procedure: the Congress must examine the way it conducts its business and either justify its procedures to the public or change them.

Since the beginning of the new year, I have been working at changing the system. The question is not a partisan one. Democrats suffer the inequality of the present Senate rules as much as Republicans. Early in January, I joined with Senator Fred Harris, an Oklahoma Democrat, in hearing testimony from other senators and representatives of the general public on the seniority system and other Senate practices. One of our most persuasive witnesses was Senator Barry Goldwater who called for reform of the seniority system despite the fact that because of his long service in the Congress, the system favors him over more junior members.

Following the hearings, the Republicans caucus, which consists of all Republican Senators, met and made two important decisions that will spread the power of the Senate to all Republican members. First, the caucus passed my resolution that limits the number of committees on which a senator can be the ranking minority member to one. The ranking member of

a committee hires the minority staff and shapes the direction of that staff. The spirit of the resolution has carried over to the point where no Republican Senator will be ranking on more than one subcommittee so younger members will fill those posts and have a larger role in shaping legislation in committee. In a second step aimed at alleviating the grievances of younger members, the caucus agreed to name a five-man study group to investigate the seniority system. One of the measures this group will have the opportunity to study is a rule change Senator Harris and I proposed that would have chairmen and ranking committee members elected by their caucuses.

While the Democratic and Republican caucuses studied seniority, the effort to change Rule 22 occupied the Senate's attention on the floor. Rule 22, of the Senate Rules and Procedures, provides that Senate debate can be cut off only by a two-thirds vote. I supported efforts to modify that margin to three-fifths.

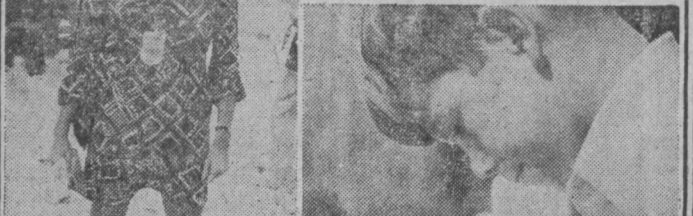
The present rules of the Senate vest too much power in the hands of senior members. Members of the Senate owe it to themselves and the public to take a hard look at this system. I am pleased with the progress of this effort so far and hope that more changes are on the way. The Senate must be a place where all members share the power and responsibility vested in them by the voters. It must be a conveyor belt in the efficient exercise of democracy, not a treadmill of inefficiency.

People, Spots In The News

ROOF-PLOWING: Snowdrifts of up to 10 feet called for massive clearing work on roof of shed of pier at Portland, Maine.



NEW DUCKLING is welcomed by James Barnhardt III. Thanks to special feeds developed by a Cargill, Inc. subsidiary, ducklings reach market weight in just seven weeks.



WORKING GIRL: It's Pia Lindstrom, daughter of Ingrid Bergman, on the job as news reporter for New York TV station.



NO BRANDY, but the riding is dandy as Tina Brandt, 4, of Glens Falls, N.Y., goes skijoring behind her St. Bernard, "Fritz." (He outweighs her several-to-one.)

IN THE CIRCUIT COURT FOR FREDERICK COUNTY (AT LAW)

NO. 6950 LAW
BALTIMORE GAS AND ELECTRIC COMPANY

a body corporate
Gas and Electric Building
Baltimore, Maryland 21203
Plaintiff

vs.
MILLAN L. EGERT and
LILLIAN H. EGERT, his wife
Genoa, Italy

American Consulate General
APO New York, New York 09689
ROYAL G. HILTON, JR.,
Mortgagee

Route 6
Frederick, Maryland 21701
RUBY LEE HILTON, Mortgagee
Route 1, Box 100
Woodsboro, Maryland 21798

COUNTY COMMISSIONERS OF
FREDERICK COUNTY
SERVE ON:

John A. Derr
President of the County Commissioners
Winchester Hall
Frederick, Maryland 21701
and

THE STATE OF MARYLAND
c/o Office of Attorney General
12th Floor One Charles Center
Baltimore, Maryland 21201
Defendants

ORDER OF PUBLICATION

THIS IS TO GIVE NOTICE that on the 4th day of February, 1971, a Petition of Condemnation was filed in the Circuit Court for Frederick County against certain Defendants, all of whom are residents of the State of Maryland, and Millan L. Egert and Lillian H. Egert, his wife, who reside in Genoa, Italy, and whose mailing address is American Consulate General, APO New York, New York 09689. The object of the Petition is to condemn in fee simple two parcels of land located in the Seventh Election District of Frederick County, State of Maryland, and the right to trim, cut down, and remove trees on adjacent parcels of land, all of which will be more particularly herein-after described; that the said land is to be used for the construction, operation, and maintenance of electric transmission lines and appurtenant equipment, in, under, over, and across said parcels of fee simple land. The Petition recites:

1. That the Plaintiff is authorized by law to acquire by purchase or condemnation, any property or right necessary in connection with the construction of electric lines to be used in supplying the public with electric light and power.

2. That on April 29, 1970, the Public Service Commission of Maryland issued an order in Case No. 6286, finding that the construction of the said transmission lines would promote the public convenience and necessity, and thereupon granted the Plaintiff a Certificate of Public Convenience and Necessity authorizing construction of said electric transmission lines, pursuant to the provisions of Article 78, Section 54A of the Annotated Code of Maryland.

3. That the Plaintiff has determined that in order to properly supply the public with electric light and power, it is necessary and proper to construct transmission lines in, over, under, and across two parcels of land, hereinafter more particularly described, located in the Seventh Election District of Frederick County, State of Maryland, owned by the various Defendants hereinafter more particularly referred to; that it is necessary to acquire the fee simple title to said strips of land in order to construct, operate, and maintain said electric transmission lines and appurtenant facilities; that it is also necessary to acquire three rights of way, each 75 feet wide, on land adjacent to the parcels of land referred to as the parcels of land in fee simple, in order that the Plaintiff will have the right to trim, cut down, and remove trees on the said rights of way.

4. That the interests of the various Defendants in said parcels of land are more particularly herein-after set forth as follows: The fee simple title to the land heretofore referred to is vested in the Defendants Millan L. Egert and Lillian H. Egert, his wife. That Royal G. Hilton, Jr. and Ruby Lee Hilton, his wife, Mortgagees, are joined herein by virtue of a mortgage dated January 14, 1965, from Millan L. Egert and Lillian H. Egert, his wife, to Royal G. Hilton, Jr. and Ruby Lee Hilton, his wife, which is recorded in Liber 717, Folio 735, one of the Land Records of Frederick County, Maryland.

That Defendants Frederick County, Maryland, and The State of Maryland are joined in these proceedings in order that the said governmental authorities may protect any claim for unpaid taxes or other public liens or charges they may have against said land, part of which is the subject of these proceedings, and all of the

said Defendants are joined in these proceedings in accordance with the provisions of Article 33A of the Annotated Code of Maryland and Subtitle U of the Maryland Rules of Procedure.

5. That it is necessary for the Plaintiff to acquire said strips of land in fee simple, and the right to cut down and trim trees on adjacent land by condemnation because it is unable to agree with the owners of said land as to the price to be paid for said land and the rights on adjacent land.

6. That the Plaintiff is desirous of acquiring by condemnation said strips of land in fee simple for the construction, operation, and maintenance thereof of its towers, poles, structures, wires, cables, conduits and other facilities over and under said strips of land, and in addition to said strips of land, the right to: (1) have access at all times, using existing roads as far as practical for the construction, operation, and maintenance of towers, poles, structures, wires, cables, conduits, and other facilities upon, over, or under said strips of land; and (2) trim, cut down, and remove trees on land owned by the Defendants adjacent to and within 75 feet along both sides of said strips of land, which trees might at any time in the sole judgment of the Plaintiff be liable to interfere with or fall upon Plaintiff's facilities to be located on the aforesaid strips of land; provided that: (1) Defendants have the right to (a) cross and extend roads and public utility facilities across said strips of land anywhere except within 50 feet of any existing or proposed structure of the Plaintiff, and if such roads or facilities interfere with the use of the land by the Plaintiff, it will relocate them, and (b) farm or use the same in any manner as long as such farming or other use in the sole judgment of Plaintiff will not interfere with the construction, operation, and maintenance of Plaintiff's existing or future facilities, but the Defendants shall not erect any buildings or structures thereon; and (2) any crops which may be damaged on land adjacent to said strips because of such construction, operation, and maintenance shall be paid for at prevailing market prices. The said strips of land are described as follows:

BEGINNING or the same at a point in the bed of Thurston Road said point of beginning being on and distant 454.26 feet from the end of the First or South 43°13' West 792.0 feet line of that parcel of land which by deed dated January 14, 1965 and recorded among the Land Records of Frederick County, Maryland in Liber 718 at Folio 22 was granted and conveyed to Royal G. Hilton, Jr. and Ruby Lee Hilton, his wife, to Millan L. Egert and Lillian H. Egert, his wife, said point of beginning also being on the centerline of the proposed electrical transmission right of way (200.00 feet wide), and running thence in the bed of said Thurston Road as laid out and now existing binding reversely along part of said First line as now surveyed

South 29°32'50" East 136.19 feet to a point at the end of the abovementioned Second line, thence binding reversely along all of said Second line

South 62°57'41" West 405.55 feet to a point on and distant 536.57 feet from an iron pipe found at the beginning of the Seventeenth (Last) line of the abovementioned parcel of land, thence binding reversely along part of said Seventeenth line as now surveyed

South 29°32'50" East 181.59 feet to a point on the centerline of the abovementioned right of way, thence continuing reversely along part of said Seventeenth line as now surveyed

South 29°32'50" East 181.59 feet to a point on the southwest-most line of said right of way, thence leaving the outline of said parcel of land and running for the southwest-most line of said right of way being southwesterly, parallel to and 100.00 feet distant from the centerline of said right of way

South 62°57'41" West 767.80 feet to a point in the bed of the abovementioned Thurston Road said point being on and distant 349.99 feet from the end of the abovementioned First line, thence running in the bed of said Thurston Road binding reversely along part of said First line as now surveyed

North 43°30'10" East 104.27 feet to the point of beginning, containing 2.694 acres of land more or less.

The two (2) 75.00 feet wide tree trimming areas are described as follows:

BEGINNING for the same at a point in the bed of Thurston Road, said point of beginning being on and distant 349.99 feet from the

end of the First or South 43°13' West 792.0 feet line of that parcel of land which by deed dated January 14, 1965 and recorded among the Land Records of Frederick County, Maryland in Liber 718 at Folio 22 was granted and conveyed by Royal G. Hilton, Jr. and Ruby Lee Hilton, his wife, to Millan L. Egert and Lillian H. Egert, his wife, said point of beginning also being at the end of the Fifth or North 62°57'41" West 767.80 feet line of the herein abovescribed Parcel No. 1, thence leaving said Thurston Road and binding reversely along all of said Fifth line

South 62°57'41" East 767.80 feet to a point on and distant 173.39 feet from an iron pipe found at the beginning of the Seventeenth (Last) line of the firstly abovementioned parcel of land, thence binding reversely along part of said Seventeenth line as now surveyed

South 29°32'50" East 136.19 feet, thence leaving the outline of said parcel of land and running for a new line of division as now drawn southwesterly, parallel to and 75.00 feet distant from the abovementioned Fifth line.

North 62°57'41" West 903.65 feet to a point in the bed of the abovementioned Thurston Road said point being on and distant 271.78 feet from the end of the abovementioned First line, thence running in the bed of said Thurston Road as laid out and now existing binding reversely along part of said First line as now surveyed, viz.:

North 43°30'10" East 78.21 feet to the point of beginning, containing 1.439 acres of land more or less.

BEGINNING for the same at a point in the bed of Thurston Road said point being on and distant 558.53 feet from the end of the First or South 43°13' West 792.0 feet line of that parcel of land which by deed dated January 14, 1965 and recorded among the Land Records of Frederick County, Maryland in Liber 718 at Folio 22 was granted and conveyed by Royal G. Hilton, Jr. and Ruby Lee Hilton, his wife, to Millan L. Egert and Lillian H. Egert, his wife, said point of beginning also being at the beginning of the Second or South 62°57'41" East 405.55 feet line of the herein abovescribed Parcel No. 1, and running thence in the bed of said Thurston Road binding reversely along part of the abovementioned First line as now surveyed

North 43°30'10" East 78.21 feet, thence leaving said Thurston Road and the outline of said parcel of land and for a new line of division as now drawn northeasterly, parallel to and 75.00 feet distant from the abovementioned Second line

South 62°57'41" East 269.70 feet to a point on and distant 672.76 feet from an iron pipe found at the beginning of the Seventeenth (Last) line of the firstly abovementioned parcel of land, thence binding reversely along part of said Seventeenth line as now surveyed

South 29°32'50" East 136.19 feet to a point at the end of the abovementioned Second line, thence binding reversely along all of said Second line

South 62°57'41" West 405.55 feet to the point of beginning, containing 0.581 acres of land more or less.

BEGINNING for the same at a point on and distant 240.22 feet from an iron pipe found at the end of the Sixteenth or South 60°54' West 341.0 feet line of that parcel of land which by deed dated January 14, 1965 and recorded among the Land Records of Frederick County, Maryland in Liber 718 at Folio 22 was granted and conveyed by Royal G. Hilton, Jr. and Ruby Lee Hilton, his wife, to Millan L. Egert and Lillian H. Egert, his wife.

The Plaintiff therefore prays: 1. That the fee simple strips of land herein described together with the rights and appurtenances thereto as shown and described be condemned in fee simple and that easements to cut and trim trees as herein described on the said strips 75 feet wide on each side of the fee simple strips, be condemned in accordance with the requisites of law in such cases made and provided, this procedure to be that described in Article 33A of the Annotated Code of Maryland and Subtitle U of the Maryland Rules of Procedure.

2. That the Plaintiff may have such other and further relief as the nature of its case may require.

WHEREUPON, it is ordered by the Circuit Court for Frederick County this 4th day of February, 1971, that the Plaintiff caused a copy of this Order to be inserted in a newspaper published in Frederick County once a week in each of four successive weeks before the 13th day of March, 1971, giving notice to the said nonresident Defendants of the object and substance of the Petition and warning them to show cause, of any there may be, on or before the 13th day of April, 1971, why the relief prayed should not be granted.

ELLIS C. WACHTER
Clerk

DANIEL W. MOYLAN
Attorney For Plaintiff

(Filed February 4, 1971)

TRUE COPY TEST
Ellis C. Wachter, Clerk
2/12/4t

feet to a point on the southwest-most line of the abovementioned right of way, thence leaving said Dixon Road and the outline of said parcel of land and running for the southwest-most line of said right of way being southwesterly, parallel to and 100.00 feet distant from the centerline of said right of way

North 62°57'41" West 504.94 feet to a point on and distant 117.33 feet from the abovementioned iron pipe found at the end of the abovementioned Sixteenth line, thence binding reversely along part of said Sixteenth line as now surveyed

North 62°34'20" East 122.89 feet to the point of beginning, containing 1.197 acres of land more or less.

The 75.00 feet wide tree trimming area is described as follows:

BEGINNING for the same at a point on and distant 117.33 feet from an iron pipe found at the end of the Sixteenth or South 60°54' West 341.0 feet line of that parcel of land which by deed dated January 14, 1965 and recorded among the Land Records of Frederick County, Maryland in Liber 718 at Folio 22 was granted and conveyed by Royal G. Hilton, Jr. and Ruby Lee Hilton, his wife, to Millan L. Egert and Lillian H. Egert, his wife, said point of beginning being at the end of the Sixth or North 62°57'41" West 504.94 feet line of the herein abovescribed Parcel No. 4, and running thence binding reversely along all of said Sixth line

South 62°57'41" East 504.94 feet to a point on the southwest-most side of Dixon Road said point being on and distant 46.11 feet from the end of the Thirteenth line of the firstly abovementioned parcel of land, thence running along the southwest-most side of said Dixon Road as laid out and now existing binding reversely along part of the Thirteenth line and part of the Twelfth line of said parcel of land the two (2) following courses and distances as now surveyed, viz.:

(1) South 22°20'00" East 33.09 feet and

(2) South 00°05'00" East 55.89 feet, thence leaving said Dixon Road and the outline of said parcel of land and running for a new line of division as now drawn

North 68°00'00" West 42.07 feet, thence running for another new line of division as now drawn southwesterly, parallel to and 75.00 feet distant from the abovementioned Sixth line

North 62°57'41" West 567.20 feet to a point on and distant 25.17 feet from the end of the abovementioned Sixteenth line, thence binding reversely along part of said Sixteenth line as now surveyed

North 62°34'20" East 92.16 feet to the point of beginning, containing 0.967 acres of land more or less.

SUBJECT TO that part of the abovescribed land lying within Thurston Road is subject to public use.

BEING part of that parcel of land which by deed dated January 14, 1965 and recorded among the Land Records of Frederick County, Maryland in Liber 718 at Folio 22 was granted and conveyed by Royal G. Hilton, Jr. and Ruby Lee Hilton, his wife, to Millan L. Egert and Lillian H. Egert, his wife.

The Plaintiff therefore prays: 1. That the fee simple strips of land herein described together with the rights and appurtenances thereto as shown and described be condemned in fee simple and that easements to cut and trim trees as herein described on the said strips 75 feet wide on each side of the fee simple strips, be condemned in accordance with the requisites of law in such cases made and provided, this procedure to be that described in Article 33A of the Annotated Code of Maryland and Subtitle U of the Maryland Rules of Procedure.

2. That the Plaintiff may have such other and further relief as the nature of its case may require.

WHEREUPON, it is ordered by the Circuit Court for Frederick County this 4th day of February, 1971, that the Plaintiff caused a copy of this Order to be inserted in a newspaper published in Frederick County once a week in each of four successive weeks before the 13th day of March, 1971, giving notice to the said nonresident Defendants of the object and substance of the Petition and warning them to show cause, of any there may be, on or before the 13th day of April, 1971, why the relief prayed should not be granted.

ELLIS C. WACHTER
Clerk

DANIEL W. MOYLAN
Attorney For Plaintiff

(Filed February 4, 1971)

TRUE COPY TEST
Ellis C. Wachter, Clerk
2/12/4t

CLASSIFIED ADS

FOR SALE—Texas Wieners now at THE PALMS, West Main St. Phone 447-2303. tf

FOR SALE—Stove and Fireplace Wood. Jacob E. Baker, phone 447-2670. tf

THE DATSUN PICK-UP TRUCK Your best buy—Drive one then decide. Datsun Sales & Service, DeeGee Imports Inc., Fairfield Road Gettysburg, P. tf

FOR SALE—Work Shoes, Boots, Basketball Shoes. We give S&H Green Stamps. Emmitsburg Feed and Farm Supply. tf

FOR SALE—20-gal capacity hot water heater; bottle gas fired. Good condition, only \$20. Phone 447-2333. tf

FOR SALE—Used Appliances — Refrigerators, Freezers, Ranges. See these bargains at Reaves Electric, W. Main St., Emmitsburg, Md. Phone 447-2497. tf

FOR SALE—1 boys size 14 all-weather coat with fleece lining. Worn only a few times. Call 487-6363. 2/5/3t

NOTICES

NOTICE—Texas Hot Dogs now available at The Palms, West Main St. Phone 447-2303. tf

NOTICE—All area residents invited to Rocky Ridge Fire Hall on March 2, 1971 at 7:30 p.m., to hear Mr. Donald Trimmer, Chief Dispatcher, present slides and talk on the operation of Central Alarm. Questions will be welcomed and refreshments will be served. 2/19/2t

BUTCHERING — Sponsored by Rocky Ridge Vol. Fire Co., Saturday, March 6, starting at 6 a.m. Advance orders: phone 271-2991, after 5 p.m. Also Sausage and Pancake Breakfast will be served. 2/19/3t

CARD OF THANKS I wish to extend my most heartfelt thanks and appreciation to all of my friends, relatives and Pastor Fearer, for the cards, gifts, and visits, as well as other acts of kindness to me during my recent hospitalization and in my own home. Mrs. Esta Miller 1t

TITLE & TAG SERVICE Myer's Shell Station, Thurmont, Md. 2/19/11t

HOUSE WANTED — 3 bedrooms. Sept. 71-June 72, for Mount students. Call 717-642-5511. 2/12/4t

WANTED—Full sized baby crib. Contact Mrs. James Harner, phone 447-2912. 2/12/2tp

HOUSEKEEPER—Settled woman to live in. Prepare light meals. No laundry or cleaning. \$75 per week. Write Box S, c/o Emmitsburg Chronicle, Emmitsburg, Md., for interview. tf

FRUIT TREES, Nut trees, berry plants, grape vines, landscape plant material, offered by Virginia's largest growers. Free copy 48-pg. Planting Guide Catalog — in color — on request. Salespeople wanted. Waynesboro Nurseries—Waynesboro, Virginia 22980. 2/5/4t

LES MORTON Painting — Papering Fairfield Pa. Phone 642-5415 tf

WELDING & CUTTING Portable Service —Reasonable Rates—Copenhaver Welding Shop Gettysburg, Pa. 17325 Phone 717-334-3714 Kenneth Copenhaver

PIANOS—PIANOS—Come in and see our large stock, new and used, before you buy. Many makes, sizes, styles, finishes. Some fully reconditioned. Prices start at \$85. Menchey Music Service, 1100 Carlisle St., Clearview Shopping Center, Hanover. tf

POSITIVELY NO TRESPASSING All persons are hereby forewarned not to trespass on my premises with dog, gun, or trap for the purpose of shooting or taking game of any kind, or for fishing, or in any way injuring or destroying property. Virgie M. Valentine R2, Emmitsburg, Md. 10/30/18tp

NOTICE "For The Finest Cars Around, Come To The Center of Town" ZENTZ AUTO SALES Gettysburg, Pa. tf

NOTICE — A Color Portrait the right gift for any occasion from The Zeigler Studio, 69 West Middle St., Gettysburg, Pa. Phone 334-1311. Artistry in Photography. tf

CUSTOM SLAUGHTERING AND PROCESSING OF BEEF Cut and wrapped for the freezer to your specifications. NORMAN SHRIVER, JR. phone 447-2255 - Emmitsburg, Md. We sell beef by half or quarters

AWNINGS

CAR PORTS
PATIO COVERS
PORCH ENCLOSURES

FIBERGLASS AWNING CO.

127 York St.
Gettysburg, Pa. - Phone 334-4612

DATSUN



All Models In Stock
SALES • SERVICE • PARTS
JENKINS MOTORS, INC.
PHONE 662-0111
EAST AND 9TH STREET
FREDERICK, MD.

FASHION SHOW

Job's Daughters
Feb. 23 — 8 p.m.
Graceham Moravian Church
Graceham, Md.

TEXAS HOT DOGS now featured at The Palms, West Main St. Phone 447-2303. tf

BEEF

By quarter - Half - Whole
—Cut as desired—
6-16 oz Loaves Baumgardner's Bread—\$1.00
5-18 oz Sandwich Bread—\$1.05
Complete line of Baumgardner's Sweets. Order your Birthday and Wedding Cakes
Bollinger's Meat Market
Phone 47-2000 tf

FARMERS and DAIRYMEN
Tetracycline
Mastitis — Scours Tablets
Injectables
All Veterinarian Supplies
PEOPLES DRUG STORE
Gettysburg, Pa.

NOTICE—Kitchen help wanted. Experience desirable but not necessary. Earn while you learn, with new, modern equipment. Shamrock Restaurant, phone 271-7882. tf

ATTENTION FARMERS
Hauling to Auction Everyday
J. E. WATKINS
Dealer in Livestock
Emmitsburg, Md.
Phone 447-2347

NEW & USED GUNS FOR SALE
Licensed Handgun Dealer
GUNS WANTED
Gene's Gun Shop
Eugene Barkard
Emmitsburg, R.D. 2, Md.
Phone 447-2869
Guns bought, sold and repaired

PIZZA SUBS

TEXAS HOT DOGS
Carry-Out Service
THE PALMS
Phone 7-2303 or 7-2991
Emmitsburg, Md.

WEDDING PORTRAITS
Groups At The Studio

WEDDING ALBUMS
Color or Black & White
Finishes. Call us for prices.

THE LANE STUDIO
34 York St.
Gettysburg, Pa.
Over 30 Years Experience

EDIFICE CARPENTER

& General Contractors
Charles Mort
Phone 642-5337 - Fairfield

Septic Tank
Cleaning Service
—Saturday & Evenings—

HERBERT W. ROHRBAUGH
Emmitsburg, Maryland
Phone 447-2286

SAVE TIME
Shop the
CLASSIFIED

Chatter is a very expressive word when applied to some conversations.

New Driving Laws Explained

By DAVID H. HUGEL
Director, Public Information
Maryland Dept. of Motor Vehicles
New Licensing System
Now In Effect

Among the numerous motor vehicle laws passed by last year's General Assembly was one creating a classified drivers license system which became effective January 1, 1971.

We have asked Mr. Ejner J. Johnson, Commissioner of Motor Vehicles, to answer some of the most frequent inquiries received concerning this new licensing system.

Q. Commissioner, the new licensing system became effective January 1 of this year; does this mean that all drivers must now apply for a classified license?

A. No, only those drivers whose license would normally expire this year must apply for the classified license. An exception would be in the case of persons who must obtain a higher license classification for reasons of employment. I might emphasize that all Maryland licenses issued prior to January 1, 1971 will remain valid until their expiration date and drivers may continue to operate all classes of vehicles for which that license was issued.

Q. Can you briefly explain how licenses are now classified?

A. Licenses are now classified according to the type of vehicle the driver will operate and are designated A, B, C, D, and E. Any class license will authorize the licensee to operate vehicles in that particular class or any lower class, except E, providing the licensee meets the age requirements of the several classes, which are age 18 for Classes A and C, and age 16 for Classes B, D, and E.

Licenses are broken into five classes, as follows:

Class A—Required to operate tractor-trailers.

Class B—Required to operate trucks over 20,000 pounds gross weight.

Class C—Required to operate busses.

Class D—Required to operate automobiles, station wagons, and trucks up to 20,000 pounds gross weight.

Class E—Required to operate motorcycles.

Any license may be endorsed to include motorcycles, thus creating a combination classification, such as "DE," but no driver may hold more than one license.

Q. How do motorists apply for a classified license?

A. Most present drivers will automatically receive a Class 'D' license at renewal time. Re-testing will not be required. However, new drivers making application will be tested in the "class" or type vehicle for which they wish to qualify. Drivers presently holding chauffeur's license must also apply for the specific classification desired at renewal time. They will not be required to be re-tested, however, if their employer can certify that they are qualified and experienced. For the convenience of license applicants, experience certification forms, which must accompany applications for Class A, B, or C licenses, are provided by the Department of Motor Vehicles.

Any one not now holding a chauffeur's license, and who does not have experience driving larger vehicles must be tested on the class vehicle for which he wishes to qualify. Only those persons who need a higher class license for occupational reasons may apply for the A, B, or C class license.

Q. Why, after all these years, did Maryland adopt a new licensing system?

A. Classified licensing is part of Governor Mandel's program to reduce traffic deaths and injuries. It is also one of the required standards of the 1966 National Highway Safety Act.

Q. Can you briefly explain how licenses are now classified?

A. Licenses are now classified according to the type of vehicle the driver will operate and are designated A, B, C, D, and E. Any class license will authorize the licensee to operate vehicles in that particular class or any lower class, except E, providing the licensee meets the age requirements of the several classes, which are age 18 for Classes A and C, and age 16 for Classes B, D, and E.

Licenses are broken into five classes, as follows:

Class A—Required to operate tractor-trailers.

Class B—Required to operate trucks over 20,000 pounds gross weight.

Class C—Required to operate busses.

Class D—Required to operate automobiles, station wagons, and trucks up to 20,000 pounds gross weight.

Class E—Required to operate motorcycles.

Any license may be endorsed to include motorcycles, thus creating a combination classification, such as "DE," but no driver may hold more than one license.

Q. How do motorists apply for a classified license?

A. Most present drivers will automatically receive a Class 'D' license at renewal time. Re-testing will not be required. However, new drivers making application will be tested in the "class" or type vehicle for which they wish to qualify. Drivers presently holding chauffeur's license must also apply for the specific classification desired at renewal time. They will not be required to be re-tested, however, if their employer can certify that they are qualified and experienced. For the convenience of license applicants, experience certification forms, which must accompany applications for Class A, B, or C licenses, are provided by the Department of Motor Vehicles.

Any one not now holding a chauffeur's license, and who does not have experience driving larger vehicles must be tested on the class vehicle for which he wishes to qualify. Only those persons who need a higher class license for occupational reasons may apply for the A, B, or C class license.

Q. Why, after all these years, did Maryland adopt a new licensing system?

A. Classified licensing is part of Governor Mandel's program to reduce traffic deaths and injuries. It is also one of the required standards of the 1966 National Highway Safety Act.

Q. Can you briefly explain how licenses are now classified?

A. Licenses are now classified according to the type of vehicle the driver will operate and are designated A, B, C, D, and E. Any class license will authorize the licensee to operate vehicles in that particular class or any lower class, except E, providing the licensee meets the age requirements of the several classes, which are age 18 for Classes A and C, and age 16 for Classes B, D, and E.

Licenses are broken into five classes, as follows:

Class A—Required to operate tractor-trailers.

Class B—Required to operate trucks over 20,000 pounds gross weight.

Class C—Required to operate busses.

Class D—Required to operate automobiles, station wagons, and trucks up to 20,000 pounds gross weight.

Class E—Required to operate motorcycles.

Any license may be endorsed to include motorcycles, thus creating a combination classification, such as "DE," but no driver may hold more than one license.

Q. How do motorists apply for a classified license?

A. Most present drivers will automatically receive a Class 'D' license at renewal time. Re-testing will not be required. However, new drivers making application will be tested in the "class" or type vehicle for which they wish to qualify. Drivers presently holding chauffeur's license must also apply for the specific classification desired at renewal time. They will not be required to be re-tested, however, if their employer can certify that they are qualified and experienced. For the convenience of license applicants, experience certification forms, which must accompany applications for Class A, B, or C licenses, are provided by the Department of Motor Vehicles.

Any one not now holding a chauffeur's license, and who does not have experience driving larger vehicles must be tested on the class vehicle for which he wishes to qualify. Only those persons who need a higher class license for occupational reasons may apply for the A, B, or C class license.

Q. Why, after all these years, did Maryland adopt a new licensing system?

A. Classified licensing is part of Governor Mandel's program to reduce traffic deaths and injuries. It is also one of the required standards of the 1966 National Highway Safety Act.

Q. Can you briefly explain how licenses are now classified?

A. Licenses are now classified according to the type of vehicle the driver will operate and are designated A, B, C, D, and E. Any class license will authorize the licensee to operate vehicles in that particular class or any lower class, except E, providing the licensee meets the age requirements of the several classes, which are age 18 for Classes A and C, and age 16 for Classes B, D, and E.

Licenses are broken into five classes, as follows:

Class A—Required to operate tractor-trailers.

Class B—Required to operate trucks over 20,000 pounds gross weight.

Class C—Required to operate busses.

Class D—Required to operate automobiles, station wagons, and trucks up to 20,000 pounds gross weight.

Class E—Required to operate motorcycles.

Any license may be endorsed to include motorcycles, thus creating a combination classification, such as "DE," but no driver may hold more than one license.

Q. How do motorists apply for a classified license?

A. Most present drivers will automatically receive a Class 'D' license at renewal time. Re-testing will not be required. However, new drivers making application will be tested in the "class" or type vehicle for which they wish to qualify. Drivers presently holding chauffeur's license must also apply for the specific classification desired at renewal time. They will not be required to be re-tested, however, if their employer can certify that they are qualified and experienced. For the convenience of license applicants, experience certification forms, which must accompany applications for Class A, B, or C licenses, are provided by the Department of Motor Vehicles.

Any one not now holding a chauffeur's license, and who does not have experience driving larger vehicles must be tested on the class vehicle for which he wishes to qualify. Only those persons who need a higher class license for occupational reasons may apply for the A, B, or C class license.

Ritchie Soldier Wins Citation

Sergeant First Class Benjamin F. Goff, Jr., of Route 1, Sabillasville, was recently honored at Fort Ritchie for outstanding performance of duty.

Sergeant Goff received the Army Commendation Medal for Service as Administrative Supervisor in the offices of the Executive Officer and the Deputy Commander for Facilities since June 1968, when he arrived at Fort Ritchie. The medal was presented by the Post Commander, Colonel Robert E. Dunlap, in ceremonies at post headquarters.

The accompanying citation, which was read by Colonel Robert M. Hall, deputy commander for facilities, commended Sergeant Goff for outstanding professional skill, foresight, and diplomacy in his dealings with high ranking officers.

The Sergeant First Class is now leaving for a new assignment in the Republic of Vietnam. His wife, Patty, and five Goff children will remain at the family residence in Sabillasville. The children are: Elaine, age 17; Karen, 16; Bonita, 13; Robin, 11; and Kevin, 8.

BABY SHOWER

A surprise baby shower was given in honor of Mrs. Francis (Cuzz) Myers, at the home of Mrs. Leo H. Yingling, on Sunday afternoon, Feb. 14. Those present were Mrs. Paul Goetz, Mrs. Ann Valentine, Mrs. Donald Byard, Mrs. Oliver Sanders, Mrs. Howard Miller, Mrs. Lloyd Marshall, Mrs. Carl Shriner, Miss Lori Sweeney, Mrs. Eugene Claybaugh.

weight. Class E—Required to operate motorcycles.

Any license may be endorsed to include motorcycles, thus creating a combination classification, such as "DE," but no driver may hold more than one license.

Q. How do motorists apply for a classified license?

A. Most present drivers will automatically receive a Class 'D' license at renewal time. Re-testing will not be required. However, new drivers making application will be tested in the "class" or type vehicle for which they wish to qualify. Drivers presently holding chauffeur's license must also apply for the specific classification desired at renewal time. They will not be required to be re-tested, however, if their employer can certify that they are qualified and experienced. For the convenience of license applicants, experience certification forms, which must accompany applications for Class A, B, or C licenses, are provided by the Department of Motor Vehicles.

Any one not now holding a chauffeur's license, and who does not have experience driving larger vehicles must be tested on the class vehicle for which he wishes to qualify. Only those persons who need a higher class license for occupational reasons may apply for the A, B, or C class license.

Q. Why, after all these years, did Maryland adopt a new licensing system?

A. Classified licensing is part of Governor Mandel's program to reduce traffic deaths and injuries. It is also one of the required standards of the 1966 National Highway Safety Act.

Q. Can you briefly explain how licenses are now classified?

A. Licenses are now classified according to the type of vehicle the driver will operate and are designated A, B, C, D, and E. Any class license will authorize the licensee to operate vehicles in that particular class or any lower class, except E, providing the licensee meets the age requirements of the several classes, which are age 18 for Classes A and C, and age 16 for Classes B, D, and E.

Licenses are broken into five classes, as follows:

Class A—Required to operate tractor-trailers.

Class B—Required to operate trucks over 20,000 pounds gross weight.

Class C—Required to operate busses.

Class D—Required to operate automobiles, station wagons, and trucks up to 20,000 pounds gross weight.

Class E—Required to operate motorcycles.

Any license may be endorsed to include motorcycles, thus creating a combination classification, such as "DE," but no driver may hold more than one license.

Q. How do motorists apply for a classified license?

A. Most present drivers will automatically receive a Class 'D' license at renewal time. Re-testing will not be required. However, new drivers making application will be tested in the "class" or type vehicle for which they wish to qualify. Drivers presently holding chauffeur's license must also apply for the specific classification desired at renewal time. They will not be required to be re-tested, however, if their employer can certify that they are qualified and experienced. For the convenience of license applicants, experience certification forms, which must accompany applications for Class A, B, or C licenses, are provided by the Department of Motor Vehicles.

Any one not now holding a chauffeur's license, and who does not have experience driving larger vehicles must be tested on the class vehicle for which he wishes to qualify. Only those persons who need a higher class license for occupational reasons may apply for the A, B, or C class license.

Q. Why, after all these years, did Maryland adopt a new licensing system?

A. Classified licensing is part of Governor Mandel's program to reduce traffic deaths and injuries. It is also one of the required standards of the 1966 National Highway Safety Act.

Q. Can you briefly explain how licenses are now classified?

A. Licenses are now classified according to the type of vehicle the driver will operate and are designated A, B, C, D, and E. Any class license will authorize the licensee to operate vehicles in that particular class or any lower class, except E, providing the licensee meets the age requirements of the several classes, which are age 18 for Classes A and C, and age 16 for Classes B, D, and E.

Licenses are broken into five classes, as follows:

Class A—Required to operate tractor-trailers.

Class B—Required to operate trucks over 20,000 pounds gross weight.

Class C—Required to operate busses.

Class D—Required to operate automobiles, station wagons, and trucks up to 20,000 pounds gross weight.

Class E—Required to operate motorcycles.

Any license may be endorsed to include motorcycles, thus creating a combination classification, such as "DE," but no driver may hold more than one license.

Q. How do motorists apply for a classified license?

A. Most present drivers will automatically receive a Class 'D' license at renewal time. Re-testing will not be required. However, new drivers making application will be tested in the "class" or type vehicle for which they wish to qualify. Drivers presently holding chauffeur's license must also apply for the specific classification desired at renewal time. They will not be required to be re-tested, however, if their employer can certify that they are qualified and experienced. For the convenience of license applicants, experience certification forms, which must accompany applications for Class A, B, or C licenses, are provided by the Department of Motor Vehicles.

Any one not now holding a chauffeur's license, and who does not have experience driving larger vehicles must be tested on the class vehicle for which he wishes to qualify. Only those persons who need a higher class license for occupational reasons may apply for the A, B, or C class license.

Q. Why, after all these years, did Maryland adopt a new licensing system?

A. Classified licensing is part of Governor Mandel's program to reduce traffic deaths and injuries. It is also one of the required standards of the 1966 National Highway Safety Act.

Q. Can you briefly explain how licenses are now classified?

A. Licenses are now classified according to the type of vehicle the driver will operate and are designated A, B, C, D, and E. Any class license will authorize the licensee to operate vehicles in that particular class or any lower class, except E, providing the licensee meets the age requirements of the several classes, which are age 18 for Classes A and C, and age 16 for Classes B, D, and E.

Licenses are broken into five classes, as follows:

Class A—Required to operate tractor-trailers.

Class B—Required to operate trucks over 20,000 pounds gross weight.

Class C—Required to operate busses.

Class D—Required to operate automobiles, station wagons, and trucks up to 20,000 pounds gross weight.

Class E—Required to operate motorcycles.

Any license may be endorsed to include motorcycles, thus creating a combination classification, such as "DE," but no driver may hold more than one license.

Q. How do motorists apply for a classified license?

A. Most present drivers will automatically receive a Class 'D' license at renewal time. Re-testing will not be required. However, new drivers making application will be tested in the "class" or type vehicle for which they wish to qualify. Drivers presently holding chauffeur's license must also apply for the specific classification desired at renewal time. They will not be required to be re-tested, however, if their employer can certify that they are qualified and experienced. For the convenience of license applicants, experience certification forms, which must accompany applications for Class A, B, or C licenses, are provided by the Department of Motor Vehicles.

Any one not now holding a chauffeur's license, and who does not have experience driving larger vehicles must be tested on the class vehicle for which he wishes to qualify. Only those persons who need a higher class license for occupational reasons may apply for the A, B, or C class license.

Q. Why, after all these years, did Maryland adopt a new licensing system?

A. Classified licensing is part of Governor Mandel's program to reduce traffic deaths and injuries. It is also one of the required standards of the 1966 National Highway Safety Act.

Q. Can you briefly explain how licenses are now classified?

A. Licenses are now classified according to the type of vehicle the driver will operate and are designated A, B, C, D, and E. Any class license will authorize the licensee to operate vehicles in that particular class or any lower class, except E, providing the licensee meets the age requirements of the several classes, which are age 18 for Classes A and C, and age 16 for Classes B, D, and E.

Licenses are broken into five classes, as follows:

Class A—Required to operate tractor-trailers.

Class B—Required to operate trucks over 20,000 pounds gross weight.

Class C—Required to operate busses.

Class D—Required to operate automobiles, station wagons, and trucks up to 20,000 pounds gross weight.

Class E—Required to operate motorcycles.

New Books Arrive At Library

"I Saw A Murder Once."

This quote came from one of the latest Agatha Christie mysteries. The book is called "Halloween Party." This thriller will thrill all the Christie fans.

Phyllis A. Whitney's newest mystery is "Window on the Square." A lonely girl, a frightened boy, a house of secrets. This book is similar to "Rebecca."

Another novel of suspense by Robert L. Fish. "Whirligig." Catch Kek . . . that's the official word in every international port. Kek Huuygens can't get through customs without being searched, interrogated, disrobed, and subjected to general indignities. But he's never caught with the contraband. Kek Huuygens is the world's greatest smuggler.

"Time of Drums," by John Ehle. For Civil War fans—this novel is touching, honest, brutal, funny, sad and sometimes glorious, recounts the fall of an era as seen through the eyes of Owen Wright, a colonel in his thirties, a soldier in the Army of the Confederacy. This is his personal accounting for his feelings and actions during six months of his life. For its authentic portrayal of the Civil War and its compassionate portrayal of love and family, this novel is a powerful, living achievement.

"The Expert Dreamers." This book is a county book which is lent to the Emmitsburg Library for a period of three months. It is a collection of science fiction stories by scientists including Arthur C. Clarke, George Gamow, Isaac Asimov, Wily Ley, Leo Szilard and Norbert Wiener.

Some of our masculine patrons would enjoy "The Anchoorman," by Ned Calmer. This book is about one of TV's most important news masters and the men and women who control him.

A book all will enjoy is "The Stuff that Dreams are Made of," by David Zinnman—50 classic motion pictures. A selection of vintage films from Hollywood's Golden Age. The 1930s and 1940s. In-

cluded are standards like Casablanca, King Kong, Gone with the Wind, Grand Hotel, Mutiny on the Bounty, and She Done Him Wrong. Visit your library today!

Nun Attending Home Ec Meeting

Sister Madeleine Wheeler, D.C., chairman of the home economics department at St. Joseph College, is attending annual conference of the National Council of Administrators of Home Economics at the Pick Congress Hotel in Chicago, Ill., this week.

Sister Madeleine is chairman of the nominating committee for the conference.

The purposes of the organization are to strengthen higher education in home economics thru teaching, research and service, and to encourage cooperation among home economics administrators. Membership is composed of home economics administrators in colleges and universities throughout the United States that have at least a four-year program in home economics.

"Administration in Higher Education: A Search for New Perspectives," the theme of the meeting, will be studied through a series of speeches, panels and group discussions. The keynote speaker, Dr. John Caffrey, director of the Commission on Administrative Affairs, American Council on Education, opened the dinner meeting Wednesday with his speech on "New Perspectives in Higher Education."

A graduate of St. Joseph's, Sr. Madeleine received her M.S. degree from Simmons College; she has been teaching at SJC since 1955.

Charged With Littering

McSherrystown police arrested James R. Jones, 31, Emmitsburg, Md., Sunday at 9 p.m. on a charge filed before McSherrystown Justice of the Peace Clyde E. Sterner, of littering in the 300-block of Main St., McSherrystown.

Mount Instructor To Give Talk

Thomas J. Devitt, instructor in theology at Mt. St. Mary's College, will deliver a talk entitled "Toward a Theology of Play" on Tuesday, Feb. 23, on the college campus.

In his talk, Devitt will contrast the nature of play and the nature of work, and attempt to reach some basic conclusion about the nature of man. In his analysis, Devitt will pay particular attention to the effect the Protestant Reformation had on man's attitude toward living.

Devitt has been teaching at Mt. St. Mary's since 1968. He is a graduate of St. Charles Seminary in Philadelphia.

Devitt's talk is one of the "Interdisciplinary Essays" series of lectures. It will begin at 7:30 p.m. in the Mount Library Forum. The public is invited to attend.

Mount Skiers Plan Meet

The Mt. St. Mary's College Ski Team will sponsor a first annual Charnita College Ski Meet on Sunday, Feb. 21, at the Charnita Ski Area.

The meet is open to any full-time area college student. Identification will be required.

The one event of the meet will be a Giant Slalom over a 1600-foot course. Each contestant will make two runs of the course.

There will be individual and team prizes. The individual prizes will go to the three skiers with the best times for both runs. The team prize will go to the college which has the lowest total for both runs of its three best skiers. The meet will begin promptly at 9 a.m. on the 21st. Registrations will be held between 8 and 8:30. There will be a \$1.50 entry fee per person in addition to the cost of a lift ticket (\$4.50 all day, \$3.25 for one-half).

The organizer of the Charnita Collegiate Ski Meet is Frank Zarnowski, Alpine Ski Coach at Mt. St. Mary's. Zarnowski received a lot of cooperation from Charnita officials, including Dick Brown and Louis Sanchez.

Southern States Report Heard

Southern States Cooperative's dollar volume, exclusive of grain marketing, for the first six months of the 1970-71 fiscal year showed a 12% increase over the same period last year.

Net savings for the period reached \$1,590,000, up \$691,000 over last year. This information was contained in a report presented by James Roser, of Reisterstown, a regional manager of the cooperative, to members at a regional board meeting held in Frederick on Feb. 10.

Attending the session from this area from Emmitsburg Feed and Farm Supply, were board members, Charles E. Brauer, Paul I. Wivell, Robert Martin and Harry Swomley, Jr.

School Registration Date Is Set

Frederick County elementary schools have set aside special days again this year to register children entering first grade next September. The Board of Education requests that all children be registered at the school located in the district in which they now reside.

A child may enter first grade in September if his sixth birthday is on or before January 1, 1972.

It is requested that the child's birth certificate be brought to the school at the time of registration to verify the birthday. Under state law evidence must be given that the child has been vaccinated before he may be admitted to school.

The registration date for Emmitsburg is Wednesday, March 3, at 2:00 p.m.

College To Offer Photography

The Continuing Education Office at Frederick Community College announces that a six week, non-credit course, titled "Basic Photography" will be offered at the new campus beginning February 22, 1971.

This course has been designed in recognition of the need in the

community to provide instruction for young people and adults in the basic art of photography. Students learn how to handle their cameras, how lighting affects their pictures, visual composition, control of lighting situations in natural light as well as artificial light and an introduction into color photography. A feature of this course is for students to take and critique their own pictures. At the end of the course a student can expect to be thoroughly familiar with his camera equipment. No textbook is needed for this course which will be highly visual in nature, incorporating a slide series that has just been released by the Eastman Kodak Company and the National Press Photographers Association.

The instructor for this course will be Mr. J. Rolfe Castleman, the Chief Photographer of The Frederick News and The Frederick Post, in Frederick. He is also Picture Editor and Photo Department Manager for these newspapers. His photography has appeared in national publications such as Sports Illustrated, Popular Science, Popular Mechanics, Industrial Photography, Editor and Publisher.

Mr. Castleman's background is extensive in all phases of photography with teaching experience at various age levels and course complexity.

This Basic Photography course will meet on six consecutive Monday evenings from 8:00 to 10:00 p.m., beginning February 22, 1971, at the new Frederick Community College campus. The fee is \$10.00 and will be collected the first evening of class. To register and/or obtain further information call Frederick Community College at 662-0101.

VFW AMBULANCE

Mrs. Roy Little, Emmitsburg, Mrs. Charles McKenney, Gettysburg, were transported this week to the Warner Hospital, Gettysburg, via the VFW ambulance. Mrs. Beatrice Myers was taken to the hospital for treatment and returned home in the vehicle, and Mr. Lee S. Bartner, Thurmont, was driven to the Frederick Memorial Hospital in the vehicle. Drivers were James Kittinger, L. Michael Boyle, Paul E. Humerick and Donald B. Byard.



Pedigree pup, "Waldi" and pretty Lufthansa stewardess Jutta Bayer make a fetching jet set with two things in common. Both hail from Munich, Germany and both do "their own thing" for the 1972 Summer Olympics, to be held in their Bavarian home town. "Waldi" is the official mascot of the XXth Olympiad, while Lufthansa German Airlines has been appointed the Official Airline of that international sporting event. The Boeing 707 in the background—appropriately named "Munich"—is the first of the 67 Lufthansa jets to bear the Olympic symbol.

IMPORTANT NOTICE!

All unpaid Parking Tickets must be paid on or before February 26, 1971. On Monday, March 1, 1971, delinquent tickets will be sent to the Department of Motor Vehicles.

Tickets may be paid by depositing them with payment enclosed in the red box at the Police Parking Space or in the Door at the Town Office. If tickets have been lost or misplaced, include your license number with your payment, for proper credit.

DO NOT DELAY! Prompt payment will insure your application for automobile license tags.

W. HENRY FILLER, CHIEF
Emmitsburg Police Dept.

HERE'S TO
YOUR GOOD
HEALTH
ALWAYS!



Your Pharmacist follows your doctor's orders in compounding of prescriptions, as registered pharmacists we are pledged to follow your doctor's orders for your health's sake, his word is our law. Your family's best friend.

EMMTSBURG PHARMACY

Paul M. Carter, Pharmacist

W. Main Street

Emmitsburg, Md.

Phone 447-6226

DON'T MISS

Tobey's

IN GETTYSBURG

**Winter Fashion
CLEARANCE**

SALE ENDS MONDAY, FEB. 22

SAVE $\frac{1}{2}$ AND MORE

ON

WINTER COATS

Fun Furs • All-Weather Coats

Untrimmed Coats • Car Coats

Fur-Trimmed Coats

Jump Suits • Pant Suits • Dresses

Skirts • Slacks • Sweaters • Tams

• Tam Sets • House Coats • Scarves

Sleep Wear • Blouses • Mittens

ALL THIS AND MORE!

COME EARLY—SELECTIONS LIMITED

— SENSATIONAL SAVINGS —

try a little
KINDNESS



There's a lot of "togetherness" in a crowded theater. If you've had your favorite shrimp scampi for dinner, check your breath at the door—with a mint.

Look through your books and see if any should be returned to the library.

When you take your kids on an outing why not invite several of their friends?

Be kind to your hair by doing your own "swing" with the Kindness Swingset by Clairol. It helps you create simple hairstyles in a hurry. Five jumbo-size rollers enclosed in a lightweight plastic case allow you to be all set in five minutes. It's small enough to fit in the average size purse.

Become aware of the dietary limitations of diabetics, of whom there are more than 2,600,000 in the nation, according to the American Diabetes Association, 1 East 45th Street, New York, N.Y. 10017, which welcomes contributions of all sizes.

For a free button that says, "try a little kindness," send your name and address to Corporate Services Dept., Clairol, 345 Park Avenue, New York, N.Y. 10022.



ANY OTHER
ODD CLEANING
JOBS
EMMTSBURG
CAR WASH
Open 'Til 11 P.M.

RUBBER STAMPS
MADE
TO ORDER



Any size of type on any size RUBBER STAMP from the very smallest to the very largest.

Hi-quality RUBBER STAMPS ruggedly built to last you years and years longer.

Faster service at prices far below what you would ordinarily expect to pay.

Come in and see us on any RUBBER STAMP needs that you may have. We also have a wide selection of MARKING DEVICES for your business and private needs.

CHRONICLE PRESS
Emmitsburg, Md.

Would you
like to lose
weight
and keep it
off for good?



Weight Watchers®

Meets in
EMMTSBURG

Every Wednesday—8 p.m.
Trinity United Meth. Church
West Main St.

JOIN NOW!

There is continuous registration in all Weight Watchers Classes. For further information, call—persons on Md. exchange only—Toll Free at no charge to you, 1-800-492-9050.

MAINTENANCE PLAN
IS AVAILABLE IN ALL
CLASSES

\$6 1st week \$2.50 weekly dues

"WEIGHT WATCHERS" is a Reg. T.M. of Weight Watchers International, Inc. Great Neck, N.Y. © 1968 W.W.I., Inc.

Attention Veterans!



Announcing
Garden of Honor

a beautiful private
Memorial Garden
reserved for
honorably discharged
veterans and their families

If you have served your country in war or in peace Resthaven Memorial Gardens offers you the Privilege of interment in a special subdivision for Veterans.

This newly developed section is planned for the many families who prefer to remain together in their final resting place — impossible in our National Cemeteries where space for even one grave is more and more difficult to find.

Although this is a private non-sectarian cemetery, the only cost for the Veterans is \$20 for perpetual care, plus \$1 for deed service on advance reservation.

If you can show proof of honorable discharge from war or peacetime duty in any branch of our armed forces, fill out the application below and mail it immediately for detailed information. Space is limited; first come, first served.

Veteran's Name	
Branch of Service	
Dates Served	To
Home Address	
City and State	Zip.....Phone.....
I now own cemetery property.YesNo	

Mail To:

VETERANS DEPARTMENT

RESTHAVEN MEMORIAL GARDENS, INC.

Administrative Office

930 East St.

Frederick, Md.

Tel 663-9535

Cemetery Office

R.D. 3 (Rt. 15 North)

Frederick, Md.

Member: American Cemetery Assoc. - Free State Cemetery Assoc.