

# Emmitsburg Chronicle

"READ BY MOST EMMITSBURGIANS"

VOLUME LXXXVI, NO. 49

EMMITSBURG CHRONICLE, EMMITSBURG, MARYLAND, FRIDAY, SEPT. 30, 1966

SINGLE COPY 7c

## Most Anything At A Glance

BY ABIGAIL

Good news for water consumers of Emmitsburg was given out this week when Mayor Guy A. Baker, Jr., announced publicly that the water ban had been lifted. Placed in effect several months ago, the ban worked in behalf of the community and it is believed that had it not been put into use we very easily could have been out of water long ago. The recent rains have given the drought a knockout blow and the Mayor feels confident that we now have sufficient quantities of water to perhaps carry us through the winter months ahead. Unrestricted water use is now prevalent in Emmitsburg so now you can wash your car, windows, porches or anything you want.

The old inflation bug continues to bite harder and harder as almost every week sees steady increases in almost everything you buy. Last month the rise was most noticeable in the supermarkets, doctors' offices and the used car lot. Climbing at its fastest rate in the past ten years, costs have risen in the past month alone four tenths of one per cent. This means that it takes \$11.38 to buy what we used to be able to at \$10. What causes consternation in the public's mind is the rise in prices also of the new cars now on the market. Some companies have hiked their products from \$5 to \$100. What angers the public is that it is aware that profits are at an all-time high and the automobile companies are actually making so much money that they hardly know what to do with it. Millions of dollars are being shoveled out to educational institutions, which is very commendable, but how about a break to the public for a change? The old battered consumer needs a rest from this constant rising price spiral, but will he get it? Positively not.

Add to the drought damage that never can be replaced, one large rock oak tree on the Mount St. Mary's College campus. Following that nine-inch rain we had last week it is believed that the leaves of the 100-foot tree which graces the Mount campus, absorbed sufficient quantities of water to make it top-heavy and topple to the ground. Apparently the roots of the tree became loosened by the many months of dryness and the quick absorption of water by the branches and leaves caused the giant tree to topple to the ground with a loud crescendo. There are a number of these forest giants around the college and they are apparently in good health, as was the one which was felled. No sign of rot was evident and college authorities estimate that the trees must be at least 200 years old. The age is amazing when one starts to think. Actually these trees were probably fully grown when Father DuBois founded the college in 1808. Mother Elizabeth Ann Seton must have marveled at God's beautiful giants as she walked beneath them back in the early days of the college. What a beautiful story these trees could tell if they were animated and human. How many holy priests, bishops, archbishops, cardinals and other church dignitaries as well as outstanding doctors, lawyers, professional men and others walked beneath them or sat and chatted and smoked and enjoyed warm conversation. Yes, these trees have witnessed much history and are a perfect example of God's greatness. We hope the remaining ones remain for many, many more years.

### Warthen Services Held

Funeral services for Mrs. Eva Grace Warthen, 63, wife of Louis Eugene Warthen, who died last Tuesday at her home, 620 W. Main St., Emmitsburg, were held Friday morning with a requiem Mass at St. Joseph's Catholic Church, Emmitsburg, with the Rev. Fr. Louis Storms officiating. Interment was in Mountainview Cemetery.

Pallbearers were Paul C. Callahan, George Warthen, Michael Bobanich, John Walter Jr., Kenneth Wagerman and Donald Kramer.

## Miss Jeanne Sharrer Recent Bride Of Carl Angleberger



Miss Betty Jeanne Sharrer and Carl Eugene Angleberger were united in marriage at 2 p.m. Aug. 20 at Mt. Tabor Lutheran Church, Rocky Ridge.

The bride is the daughter of Mr. and Mrs. Marshall V. Sharrer of Rocky Ridge, and the bridegroom is the son of Mr. and Mrs. Worthington Angleberger of Thurmont.

Mrs. Charlotte Thompson accompanied the soloist, Mrs. Anna Lee Glass.

Given in marriage by her uncle, Kenneth Sharrer of New Midway, the bride wore a gown of rose-point lace with moulded bodice, sculptured decolletage traced in hand clipped scallops and bracelet sleeves ending in petal points. The silhouette of her skirt was detailed in seed pearls and crystal bead embroidery, and from a back bow her train of imported organza appliqued in pearl embroidered lace motifs fell in folds to chapel length. A crown of starched lace edged in pearl held her veil of silk illusion, and she carried a colonial bouquet of white pompons with baby's breath and a corsage of white roses in the center.

Serving as matron of honor was Mrs. Mary Ann Hahn of Emmitsburg, sister of the bride. She wore an aqua three-teir dress and carried a bouquet of pink and white

pompons.

Cynthia and Pamela Hahn, nieces of the bride, were flower girls. They wore white dresses trimmed in blue, and carried colonial bouquets of mixed flowers.

Best man was Allen Angleberger of Thurmont, brother of the bridegroom. Ushers were Edward Free of Thurmont, and Dale L. Sharrer of Rocky Ridge, brother of the bride.

For her daughter's wedding, Mrs. Sharrer chose a baby blue dacton dress trimmed in white with a yellow rosebud corsage. Mrs. Angleberger wore a pink striped crepe dress with a corsage of yellow rosebuds.

Following the ceremony, a reception was held in the church social room.

After the reception, the couple left for a honeymoon in Wildwood, New Jersey.

The bride is a 1962 graduate of Emmitsburg High School and is employed as a receptionist and dental assistant by Dr. J. C. L. Brown, D.D.S., of Blue Ridge Summit, Pa.

The bridegroom is a 1960 graduate of Thurmont High School. He served four years with the U. S. Navy, and is now employed by Moore Business Forms, Thurmont.

The couple is now residing in Emmitsburg.

## Pope Asks Prayer, Penance Observance

A period of prayer and penance has been requested by His Holiness, Pope Paul VI, for October 3-4, and will be held at St. Joseph's Catholic Church.

The Holy Father has called upon us to devote the month of October to prayers for peace, and to be especially faithful in reciting the rosary for this purpose. He has also asked us to observe a special day of prayer and penance, and has designated Tuesday, October 4, the anniversary of his visit to the UN, as the date for this world-wide observance.

It is suggested that everyone fast and abstain on that day as an added sacrifice.

The period of prayer and penance at Saint Joseph's Church will begin Monday evening, October 3, with Mass at 7:30, followed by Exposition of the Blessed Sacrament during the night and continuing until 11:00 Tuesday morning when there will be a Mass for the school children.

Confessions will be heard during this time so that all may avail themselves of the Sacrament of Penance.

The Day of Special Prayer will close Tuesday evening with an Ecumenical Service at 8 p.m. The local Ministers and their congregations have been invited to participate in this Service.

### VFW TO MEET

The regular meeting of Memorial Post 6658, Veterans of Foreign Wars, will be held Wednesday evening, October 5, beginning at 8:30 p.m. The meeting will be held at Kump's Dam Park. In case of inclement weather the meeting will be held in the Post Home on the Square.

### VFW AMBULANCE

Ray Gigeous was transported this week to the Warner Hospital, Gettysburg, via the VFW ambulance. The driver was Donald Byard.

## Lions Continue Fight For Mailboxes

President Norman J. Shriver presided at the regular meeting of the Emmitsburg Lions Club held Monday evening in Mt. Manor Restaurant.

Lion members were invited to attend a Fellowship Night on Oct. 8, at the Venice Restaurant, Hagerstown. Tickets were announced available by the Middletown Lions Club to an exhibition basketball game featuring the Baltimore Bullets and the New York Knicks, to be held at Frederick on Oct. 11. Lions Ralph Tabler, Gene Sappington, Ralph McDonnell and Norman Shriver reported they had attended a recent meeting of the Thurmont Lions Club.

During the meeting happy birthday was sung to Francis S. K. Matthews, charter member. A recorded message on the Peace Essay by the Lions International, was played at the meeting. Lion William Slemmer, Peace Essay chairman, announced he has visited the local schools and colleges and explained the Peace Essay to those interested. The local club is offering a \$25 savings bond as the first prize in the contest. Second and third prizes will be \$10 and \$5 respectively. The contest is open to youths between 14-21. Entry forms are available at the schools.

Lion Clarence G. Frailey reported he had contacted Congressman Charles McC. Mathias concerning mailboxes for the town and that the Congressman had pledged his support on the project. The annual Charter Night was discussed for Oct. 26. For the past five years the local club and the Thurmont Club have made this event a joint affair. No action on the affair was taken at this meeting. The club authorized a \$5 advertisement for the Grange Community Show program. Guest at the meeting was a cousin of Lion Ralph Tabler, Charles Boyer, from Florida.

Life is a fatal complaint, and an eminently contagious one.

## Mount Alumnus Dies In Pittsburgh



JOHN CARROLL ELDER

John Carroll Elder, son of Mrs. Genevieve R. Elder and the late John D. Elder, died at St. John's Hospital, Pittsburgh, Pa., Thursday, September 29, following a lengthy illness from cancer, aged 58.

The deceased was born in Pittsburgh and came to Emmitsburg in his early youth, learning the printing trade under his father, at the Chronicle. Following his graduation from Mt. St. Mary's College in 1931, he did post-graduate work for one year at the University of Pittsburgh. He was

employed in the composing room of the Pittsburgh Press as a Linotype operator, for the past 30 years having left Emmitsburg in 1936.

Mr. Elder was a member of the International Typographical Union and Pittsburgh Typographical Union No. 7. He was a member of St. Cyril's of Alexandria Catholic Church and the Holy Name Society.

The deceased is survived by his widow, Catherine (Caton) Elder; two sons, Dean and John, at home; a daughter, Mrs. Jay Mahan, Morgantown, W. Va.; his mother, Mrs. Genevieve R. Elder, Emmitsburg, and six brothers and sisters: Mrs. William C. Smith, Timonium, Md.; J. Earl Elder, Pittsburgh, Pa.; Lawrence J. Elder, McKeesport, Pa.; C. Arthur Elder, Emmitsburg, Md.; Mrs. Dora Paidakovich and Mrs. Yvonne Wiegand, Silver Spring, Md.

The body will rest at the O'Brien Funeral Home, California Ave., Pittsburgh, Friday and Saturday. Friends can view the body Sunday evening at the Wilson Funeral Home, Emmitsburg at 7 p. m. The Rosary will be recited at 8:00. A requiem Mass will be celebrated in St. Joseph's Church, Monday morning at 10 a.m., Rev. Louis Storms, pastor, officiating. Interment will be made in the new St. Joseph's Cemetery.

## Shorb-Stitley Nuptials Held



Miss Linda Diane Stitley, daughter of Mr. and Mrs. Roland Stitley, Harney, became the bride of Charles Michael Shorb, son of Mr. and Mrs. Charles B. Shorb, on Saturday, Sept. 24 at 10:00 a.m. in St. Joseph's Church. The nuptial Mass and double-ring ceremony was performed by Rev. Fr. Francis Stauble, C.M., assistant pastor of St. Joseph's, before an altar decorated in white mums and fern.

The bride, given in marriage by her father, wore a floor length gown of alencon lace over tulle and taffeta, with tight fitted bodice, long sleeves ending in points over her hands, sabrina neckline, with clustered sequins around the neckline. Her hip length veil fell from a crown of pearls. She carried a bouquet of white carnations and baby's breath.

Miss Karen Shorb, sister of the groom, was maid of honor. She wore a yellow street-length gown of peau de soie silk with lace top, and a yellow head-piece of velvet and tulle. She carried a bouquet of blue tinted carnations and baby's breath.

The best man was David Portner, friend of the groom, Thurmont. Ushers were Samuel Wivell and Patrick Williams, Emmitsburg, classmates of the groom.

Mrs. Louella Rosensteel, church organist, played traditional wedding music and accompanied the soloist, Mrs. Marie Rosensteel, aunt of the groom.

Immediately following the ceremony, a reception was held at the home of the groom for the immediate families and close friends of approximately 40 persons.

The couple is at home at their newly furnished department at 10 Fairview Ave., Taneytown.

The bride attended Taneytown High School and is now employed at the Cambridge Rubber Co., Taneytown.

The groom is a graduate of St. Joseph's High School, Emmitsburg, and is employed at Black and Decker, Hampstead.

## Hymn Sing Sunday Night

A Hymn Sing will be held at Incarnation United Church of Christ this Sunday night, October 2, at 7:30 p.m. There will be some special presentations but this evening will be devoted primarily to group singing. The Junior Choir of Elias Lutheran Church will sing, "Jesus Loves the Little Children" and "Dear Jesus, Hear Me".

As part of the service the members of Incarnation Church will present their "little churches". The money contained therein and the evening's offering will go toward the Educational Building Fund.

Everyone is invited to attend and join in the singing of "the good old songs".

Pvt. Paul J. Humerick, Camp Lejeune, N. C., spent the week-end visiting his wife, Linda, and his parents, Mr. and Mrs. Paul E. Humerick.

## Miss Lewis Is Bride In Pretty Church Wedding



Miss Rose Mary Lewis and Marshall V. Sharrer, Jr., were united in marriage at 2:00 p. m., Sept. 10, at St. Joseph's Catholic Church in Emmitsburg.

Rev. Francis Stauble, C.M., performed the double-ring ceremony. The bride is the daughter of Mrs. Frances K. Lewis of Emmitsburg and the bridegroom is the son of Mr. and Mrs. Marshall Sharrer, Sr., Rocky Ridge.

Mrs. Louis Rosensteel, church organist, played traditional wedding selections.

Given in marriage by her brother, Robert F. Lewis, Taneytown, the bride chose a white floor-length gown of organza styled with a modified waistline, kabuki sleeves, a scooped neckline and a controlled skirt edged in peau de 'ange lace and pearls with a full sweep train. Her illusion tiered veil fell from a matching bridal headpiece of rosebuds and sequins and she carried a colonial bouquet of white pompons and baby's breath.

Serving as maid of honor was Miss Mary Ida Goulden of Townson, Md., cousin of the bride. She wore a floor-length aqua crepe gown with a circlet neckline and short sleeves, and an empire bodice trimmed with white guipure lace. She wore a matching headpiece of lace and carried

a colonial bouquet of yellow carnations and baby's breath.

Junior bridesmaid was Miss Cynthia Ann Neal of Emmitsburg, also cousin to the bride. She wore a floor-length aqua gown similar to that of the maid of honor, with a matching headpiece of lace. She also carried a colonial bouquet of yellow carnations and baby's breath.

Thomas White of Emmitsburg served as best man. Ushers were John Troxell, Emmitsburg, and Robert L. Wilhide of Thurmont, all friends of the bridegroom.

For her daughter's wedding Mrs. Lewis chose a tan print suit trimmed in white with green accessories and wore a corsage of yellow rosebuds.

Following the ceremony a reception was held in the VFW Annex. Immediately after the reception the couple left for a honeymoon trip to Virginia Beach.

The bride is a 1964 graduate of St. Joseph's High School, Emmitsburg and is employed as a receptionist in the office of Dr. George L. Morningstar.

The bridegroom attended Emmitsburg High School and is employed by Charles F. Eyler, Jr., building contractor, Rocky Ridge. The couple is residing in their newly-furnished apartment in Emmitsburg.

## Completes Basic



Pvt. James E. Grider, Emmitsburg, has completed his basic military training with the U. S. Army at Fort Knox, Ky. Grider entered the service July 6.

Private Grider is now stationed at Fort Ord, California, for the next eight weeks.

## Food Sale

A Food and Rummage Sale will be sponsored by St. Anthony's Shrine in the social hall on Saturday, Oct. 29, starting at 2:00 p.m., it has been announced. The sale was originally scheduled for Oct. 1 but has been rescheduled for Oct. 29. New and used clothing and delicious food will be on sale and the general public is cordially invited.

## Magician Will Be Feature At Show

A magician will be the feature part of the program for the Annual Grange Community Show on Friday, October 14, at the Emmitsburg High School auditorium. Mr. H. David Hagan of Frederick who performs feats of magic, will come with his tricks for that night. The program will begin about 7:30 p.m. with Mr. Hagan appearing around 8 o'clock. During the evening's program door prizes will be given away. You must be present to win.

Saturday night's program will feature an original play by some of the Girl Scouts of Emmitsburg, "Little Green Riding Hood." Mrs. Robert Marshall will direct the play which she and her family, with ideas from the Scouts, wrote, and which was presented for the Brownie Fly-Up ceremonies recently.

The exhibits of canned goods, fresh vegetables, flowers, arts and crafts, sewing, etc., will be open to the public both nights free of charge. A silver donation may be given toward the door prize award. Candy and other sweets will be for sale.

Watch for further announcements.

## Condition Satisfactory

Dr. John J. Dillon, Jr., Blue Ridge Summit, head of the English Department at Mt. St. Mary's College, was reported in a satisfactory condition at the Warner Hospital, where he is under observation after becoming ill.



## Community Show Premium List Is Announced

The Emmitsburg Grange's Annual Community Show has been set for Friday and Saturday, October 14 and 15, it has been announced.

The committee in charge reports the show all in readiness and has many interesting features. It also issued for publication the rules governing the show and the following premium list:

### General Rules

Exhibitors are solicited from the residents of the Emmitsburg Community. All fruits and vegetables should be in clear glass containers. The show is striving for uniformity by requesting the use of quart containers, but pints will be accepted. Labels and markings will be handled upon presentation for entry. Only exhibits grown or made by the exhibitor shall be eligible for a prize. No more than one entry per person is permitted in each class under each department. Example: Each individual may exhibit under Dept. 3, clover, alfalfa, lespedeza and mixed hay, but two exhibits of alfalfa, etc., from one individual will not be permitted.

Exhibitors from out of the community and also antiques, will be welcome and displayed, but will not be judged or be eligible for a prize. No exhibit that has won in a former Emmitsburg Community Show will be eligible for a prize again this year. They may be placed on display, however.

Entries will be received on Friday, October 14, from 8 until 11:30 a.m. Judging will be Friday from 1 to 5 p.m. Exhibits may be removed after 10 p.m. Saturday, Oct. 15 and must be claimed by 2 p.m. Sunday, Oct. 16. Entries will also be received Thursday evening, October 13.

The placings of the judges must be accepted as final. The show committee reserves the right to pass on any decisions not covered by these rules.

### Exhibit List

Dept. 1—Corn, 10 ear samples, open pollinated varieties, hybrid varieties, popcorn and sweetcorn.

Dept. 2 — Small grains and seeds, displayed in quart jars, wheat, barley, oats, rye, clover seed and timothy seed.

Dept. 3 — Hay: Three-pound samples, neatly tied, of the following: Clover, alfalfa, lespedeza, mixed variety.

Dept. 4—Fresh fruits, plate of five. Apples: York, Imperial, Delicious, Winesap, Grimes Golden, etc. Pears: Plate of five.

Dept. 5—Fresh vegetables. Best collection of 16 potatoes: Irish Cobbler, Green Mountain, Katahdins, etc. Best collection of 16 sweet potatoes, six turnips, one cantaloupe, one apple, one cauliflower, one pumpkin, one head cabbage. Plate of 5: Beets, tomatoes, peppers, onions, carrots, string beans, lima beans, one squash.

Dept. 6—Canned fruits and vegetables: Should be in a colorless quart container. Red cherries, whole or seedless; yellow cherries, whole or seedless; white cherries, whole or seedless. Corn,

peaches, lima beans, tomatoes, sauerkraut, tomato juice, peas, carrots, applesauce, pears, vegetable mixture, string beans, beets, berries, kale, spinach, peppers, crab apples, rhubarb, plums, asparagus and broccoli.

Dept. 7—Jellies, preserves and pickles, colorless containers. Jelly: Grape, apple, raspberry, blackberry, peach, cherry, crab apple, and quince. Preserves: Strawberry, peach, pear and plum. Pickles: Cucumber, bread and butter, beet, pepper mustard, chili sauce, catsup, watermelon, peach, dill, vegetable relish and mixed pickles. (Must be labeled and in jars).

Dept. 8 — Meats (canned and home-cured). Should be in colorless quart containers. Canned chicken, beef, sausage, tenderloin, pudding, one home-cured ham, one home-cured bacon, spareribs, and mince meat.

Dept. 9 — Baked Products: (Home-made) loaf of bread, six rolls, six drop cookies, six rolled cookies; cakes, all kinds; pies, all kinds; donuts and biscuits.

Dept. 10 — Sewing, crocheting, needlework, embroidery, knitting, and quilts. Crochet work: Best quilt, best home-made garment and best garment made from feed sacks; embroidery.

Dept. 11—Flowers: Any suitable container may be used but will not be judged. Best foliage potted plant, best arrangement of dried flowers, best display of roses, best display of dahlias, best display of asters, best display of chrysanthemums, best floral arrangement.

Dept. 12 — Best collection of home-grown nuts, plate of 12: English walnuts, black walnuts, and shellbarks.

Dept. 13 — Home products display. This display will be judged on the arrangements and quality of the articles. Any type container or arrangements may be used. A 24x24-inch table space will be provided for this display. The display must consist of any five of the following items. The number specified in front of each item must be used: Five apples, five carrots, five beets, five tomatoes, one pumpkin, six ears of corn, 12 nuts, 3-lb. sample of hay, six potatoes, two jars of canned fruits or jellies, two jars canned vegetables or meats, one flower arrangement, one baked product and one quart of grain.

Dept. 14—Eggs: One-half dozen white or one-half dozen brown.

Dept. 14—Arts.

Dept. 15 — Miscellaneous. Best plate of candy, best plate of home-made soap (3 pieces), arts and crafts. Largest pumpkins; miscellaneous fresh fruits; miscellaneous fresh vegetables; miscellaneous canned fruits; miscellaneous jellies, pickles and preserves; unclassified products.

Dept. 17—Crafts.

The show will be open to the public on Friday, Oct. 14 at 7:00 p.m. and on Saturday, Oct. 15 from 7 until 10 p.m. A door prize will be drawn at 9 o'clock Friday and Saturday nights.

The Emmitsburg Community Show is sponsored by the Emmitsburg Grange. The organization puts in a lot of time and work and its asks everyone to cooperate in making it a success and a credit to the community, as in former years.

The Community Show is being put on under the rules, and with the aid of the Maryland State Fair Assn. Approximately \$200 will be offered in prizes to exhibitors. Programs are being published with paid advertising to help meet part of the promotion expenses.

Everyone is invited and encouraged to come and see the Show on Friday and Saturday, October 14 and 15.

## Taneytown Lions Club Meets

The Taneytown Lions Club held a joint meeting with the Terra Ruba Lions Club of Keyville on September 27, at the Taney Inn. Lion President Delmont Koons, welcomed the 42 Lions and 11 visiting Lions to the first joint meeting. First vice president, Lion Bill Mehring gave brief remarks on behalf of the Terra Ruba Club.

Past District Governor Harry Dougherty, Sr., welcomed Lion Joseph Meyer into our club by transfer from the Baltimore Club. Program Chairman, Lion Robert Feaser, introduced Dr. J. C. Donley, Optometrist of Gettysburg, as the speaker for the evening. Dr. Donley, who does extensive traveling, gave a thrilling trip to the modern Africa via slides and interesting comments.

Calendar Project Chairman, Lion Glenn Bollinger, gave a statistical report on the Calendar sales for this year. Top salesman honors go to Lion Glenn Reaver. Lions Donald Lawyer, Gregg Kiser, and Rev. Edmund Welker placed second, third and fourth, respectively. The winning team, out of four teams, was captained by Lion Glenn Reaver. The other three teams will have to pay the meal ticket for the winning team at the next Lions meeting.

Lion Delmont Koons, on behalf of the club, accepted the 100% Attendance Award for 1965-66 from Lions International. Lion Koons held a brief Board Meeting following the regular meeting.

## Mount Homecoming Planned Oct. 14-16

The 1966 Annual Homecoming will be held at Mount St. Mary's College during the weekend of October 14-16, beginning with the President's Reception at 6:30 p.m. on Friday followed by a Maryland Seafood Smorgasbord.

Saturday morning will begin with a morning meeting of all national and chapter alumni officers and committees to prepare the final agenda for the general meeting to be held in the afternoon. During the afternoon a special athletic program has been planned for the alumni plus a fashion show and dessert tea for their wives.

The golden, 1916, silver, 1941, and ten-year, 1956, classes, will hold special reunions during the day and evening. At 6:30 p.m. the Annual Alumni Dinner will commence at which time special awards will be presented. A dance

will follow the dinner.

A special Mass of Thanksgiving will be held each day for the alumni and their families in the college chapel. Friday's service will be held at 5 p.m.; Saturday's at 8 a.m.; and Sunday's at 12 noon.

This year's committee is composed of: Thomas D. Ryan, '63; Ray Bonner, '61; William Bridge, '40; Dean J. Sprague, '57; Martin T. Golibart, '57; and Frank X. Ligorano. Rt. Rev. Robert R. Kline, college president and class of '41, and Larry Horning, '56, are chairmen for their respective class reunions.

## Welfare Payouts Show Increase

The Frederick County Welfare Department aided 686 people during August, 13 more than in July, but at a cost of \$942 under the July expenditure.

Mrs. Geneva Barthel, local welfare director, said the department

paid \$71,605 to the needy during August with the largest amount going to 208 families with dependent children. There was \$26,949 spent for this service.

The second largest sum was to 195 children living in foster homes. Average grant per child was slightly more than \$68 totaling \$13,359.

Old age assistance was received by 144 persons at a cost of \$6,607. Aid to the permanently and totally disabled was paid to 94 people at a cost of \$5,206.

Forty-two people received general public assistance funds amounting to \$2,599. Aid to the

needy blind was granted to three people at the sum of \$169.

The federal government paid \$26,799, more than one-third of all expenses. The state contributed \$9,642 while local assistance was \$7,895.

The largest amount of applications approved for August were of medical aid. Of 163 applications received, 159 were approved. Nine new applications were approved to families with dependent children. A total of 292 applications in all categories were handled.

Our idea of a pleasant life is to have more income than expense and little or nothing to do.

## Notice to our Patrons

The Telephone Company Has Changed  
Our Number At Thurmont  
From CR. 1-3111 To 271-7321

We were told by the Company this change was

Necessary, So in the future

Please dial us here at Thurmont as follows:

271-7321

THANK YOU!

Thurmont Cooperative, Inc.

Phone 271-7321

Rocky Ridge Warehouse—Phone 447-3824 or 271-2660

## Do You Have A Loved One Away From Home?

Send Your Portrait Or  
Family Picture To Him  
For A "Merry" Christmas  
Before the October

Overseas Mailing

Deadline!

HAVE THE  
PICTURE TAKEN  
NOW!

For Appointment—Call 334-1311

ZIEGLER STUDIO

Phone 334-1311  
69 West Middle St.

Gettysburg, Pa.

## It's Planting Time!

TULIPS

HYACINTH

NARCISSUS

DAFFODILS

CROCUS

IRIS

ANEMONE

PLANT  
DUTCH  
BULBS  
NOW!

IT'S SO  
EASY!



George M. Zerfing

HARDWARE, INC.

Gettysburg Free Parking Rear of Store Littlestown

## Get yourself a brand new '67 with a convenient auto loan.....

Is the old buggy barely able to roll? Or, is it rolling up big repair bills? You'll be miles ahead with an Auto Loan from the Farmers & Mechanics National Bank. Interest rates are reasonable and the service is quick and convenient. Come in and talk over your needs with us.

EMMITSBURG OFFICE  
FARMERS AND MECHANICS  
NATIONAL BANK

Member F.D.I.C.

# Tobey's

OF GETTYSBURG

celebrates more than a  
**QUARTER-CENTURY**  
of quality and service with our  
**GREATEST SAVINGS EVENT**  
**SEPTEMBER 29-OCTOBER 8**

We are extremely proud of our more than a quarter-century of quality and service to the women of our area. We appreciate your patronage and sincerely hope you will enjoy the savings we present during this anniversary event.

hundreds of anniversary  
specials . . . these are but a few!

Special Group of  
Ski Jackels and  
Bench Warmers

Warmly lined for the cold  
weather ahead. Regular \$18.

Now \$13.90

FALL DRESSES  
in Dark Cottons, Cotton Blends  
Cotton Knits . . .

Regular \$11.95 to \$24.95

Now \$8.90 to \$18.00

Acetate Knit  
Match-Mates  
in Fall's Rich Colors  
**\$11 Skirts, Now \$8**  
**\$8 and \$9 Blouses**  
**Now \$6 and \$7**  
for Both  
**NOW \$14 and \$15**

Again! . . .  
Nonrun Panties  
Guaranteed for One Year  
**Now 3 for \$1**

**2 Prizes Awarded Daily**  
No Purchase Necessary—Just Stop  
In and Register . . . 2 Prizes  
Awarded Daily

**1 GRAND PRIZE**

TO BE AWARDED  
SATURDAY, OCTOBER 8

OPEN

Daily—9 to 5  
Fri. and Sat.—9 to 9





## Looking Ahead

by Dr. George S. Benson  
PRESIDENT-NATIONAL  
EDUCATION PROGRAM  
Searcy, Arkansas

### Facts On Treason And Rioting

The House Un-American Activities Committee, in its hearings into mass demonstrations against United States war efforts in Viet Nam, has performed another great service for the American people. The hearings spotlighted two facts which most Americans have been persuaded, by Red-inspired propaganda, and inadequate press reporting, not to believe. The facts are these:

### BUSINESS SERVICES

PATRONIZE our Advertisers. These firms are reliable and have proven through the years that they handle only quality products and offer skilled professional service and advice to their patrons.

**TOPPER**  
Insurance Agency  
Est. 1953  
Auto - Homeowner's  
Casualty - Accident and  
Health - Hospitalization  
OFFICE AT HOME - MT. RD.  
Phone 447-3467 - Notary  
—No Parking Problems—

**YOUR MATERNITY  
HEADQUARTERS**  
Hanover Maternity Shop  
41 Frederick St., Hanover, Pa.

**LIBRARY HOURS**  
Afternoons, Mon. thru Fri.  
2:30-5:00 P.M.  
Evenings, Monday - Wednesday  
7:00-9:00 P.M.  
Saturday, 9 A.M.-12:30 P.M.

**Dr. D. L. Beegle**  
**Dr. John Beegle**  
CHIROPRACTORS  
Emmitsburg, Md.

**Coffman Jewelers**  
ART-CARVED DIAMONDS  
SYRACUSE CHINA  
OMEGA & ELGIN  
WATCHES  
16 Baltimore St., Gettysburg

**DR. R. P. KLINGER, JR.**  
Optometrist  
19 East Main Street  
EMMITSBURG, MD.  
Eyes Examined - Glasses Fitted  
Complete Optical Repairs  
**HOURS**  
MONDAY: 6:30 p.m. to 8:30 p.m.  
(Other Evenings By Appointment)  
**PHONE**  
WESTMINSTER TI 8-8340

**WILSON**  
Funeral Home  
EMMITSBURG, MD.

Phones:  
Emmitsburg 447-4621  
Fairfield 642-8642

**For Expert Oil Burner  
Service Call**  
**LEWIS HAHN**  
OIL BURNER SERVICE  
Phone 271-2512 - Thurmont

**Prescription Service**  
Fast and Dependable  
Accuracy  
Comes  
First  
•  
Your  
Rxall  
Store  
**Peoples Drug Store**  
York Street, Gettysburg

(1) Hard-core Communists directed undoubtedly by strategists headquartered in Red Cuba, are responsible for the spreading agitation and incitement to treason against the U. S. in the Viet Nam war; and (2) Hard-core Communists out to the same training schools — in the U. S. and Cuba—are leading and inciting Negroes to defy law and stir up race violence in cities throughout the nation.

The facts brought out (but not widely reported) make it inescapably clear that Communists have sufficient forces within our nation to start a civil war and to critically sabotage a U. S. war effort. This is contrary to what our Governmental leaders have been telling the nation during recent years.

### Treason Defined

Surely American citizens who have witnessed the continuing Negro "open housing" riots, with their carefully planned, widespread arson, pilaging, plundering, looting, and rifle attacks upon police forces, can see how close they have already come to anarchy and civil war. With the aid of testimony at the HUAC hearings and reports of northern city Grand Juries our citizens can now clearly see that leaders in the race riots often are from the same Communist fronts as those seeking to mobilize help for America's enemy in Viet Nam.

Legal textbooks define "treason" as: "Adhering to the enemy, giving aid and comfort to the enemy." The same textbooks are replete with definitions establishing arson, pilaging, plundering, looting, militant attacks of injunctions as illegal—defiance of law. On these two fronts, the Communists and their dupes are defying the law and endangering the security of the nation.

**Lawlessness Must Be Halted**  
If the HUAC hearings and Grand Jury findings are to have any lasting value, the people of America must demand swift action in the upholding of the law. If the law is not enforced against the continuing agitation of racial riots—brought on by massive marches of Negroes into White residential neighborhoods—and if Communists who are raising money and conducting other campaigns to aid our enemy in Viet Nam are permitted to continue this treason, both activities will expand and our nation may be torn by the worst civil strife in history. Also it could make defiance of law epidemic and tear apart our safeguards against anarchy.

In Cleveland, where cadres of well-trained rioters went on a 12-day spree of fire-bombing, looting and vandalism, setting 250 fires and engaging in deadly warfare against police the Cuyahoga County Grand Jury said the outbreak was "organized, premeditated and exploited by a relatively small group of trained and disciplined professionals in this business." Testimony of 40 witnesses established the fact that Communists, notorious for activities in many front organizations, actually played leading roles in the riot and in preparations for the riots.

**Training For Riots And Revolution**  
The Grand Jury report said youths at the Jomo Freedom Kenyatta House in Cleveland were trained, prior to the riots, in the use of weapons and fire-bombs, and were indoctrinated with an anti-white philosophy and hatred. The Negro founder of the JFK House was cited for affiliations with "the Freedom Fighters of Ohio, the Medgar Evers Rifle Club, the Deacons

for Defense and the Revolutionary Action Movement," according to the Grand Jury.

The Grand Jury said evidence showed that "rifle clubs were formed, that ammunition was purchased and that a range was established and used, that speeches were made at JFK House advocating the need for rifle clubs and that instructions were given in the use of Molotov cocktails and how and when to throw them to obtain maximum effect." The Grand Jury said that known Communists outside Ohio arrived in Cleveland shortly before the riots and "made swift contact with the JFK House leadership" and known Red leaders throughout the Ohio Valley.

Next week: Congressional evidence of Cuban Communists involvement in the spreading "protest" movements.

## Family Favorite

Yes, this is a family drug store. Every member of your household will appreciate our friendly, interested service and fair prices.

Why not form the habit of turning to us for your needs in drugs and health supplies? And always bring us your Doctor's prescriptions!

### EMMITSBURG PHARMACY

Paul M. Carter Pharmacist  
W. Main Street EMMITSBURG, MD.



## OUTDOOR SPORTING TIPS

### Floats

Red and white floats should be adjustable to get maximum use out of them. Put red side up during the day; white side for dawn or dusk fishing.

### Crow Bait

A dead rabbit makes a draw-bait for crows. Place in a field and conceal yourself nearby.

### Motor Buoy

Make a marker buoy for your motor by wrapping a plastic bottle with long cord. Where you fish, clip the end of the line on the motor. You'll never have any trouble locating motor in the event of a loss.

### Nuts

Oversize nuts used in construction work make good decoy anchors. Your junk dealer has plenty of them.

### Catfish Bait

Soak strips of rabbit fur in rabbit blood and let dry. Try it as a bait for catfish.

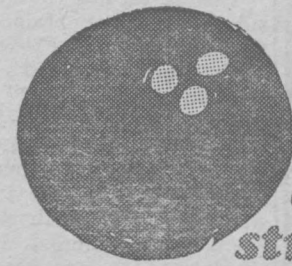
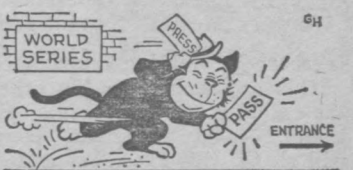
### Oil Off

Excess oil on shotgun or rifle can clog action in cold weather. Oil lightly when temperatures drop.

### Oil On

Salad oil rubbed on boots will waterproof almost as well as neats-foot oil.

The longest tug-of-war ever contested lasted two hours 41 minutes, and took place in India in 1889 between two companies of British infantry.



**Before you go bowling tonight check the news on radio. It'll help you strike up a conversation on something besides a spare. Radio is your fastest news reporter. Fastest and best: your CBS Radio News station** (which might report your 274 game).

A CBS Radio Network Station. **WFM D - 930**

# Ride Ford's New Wave for '67! At your dealer's now!



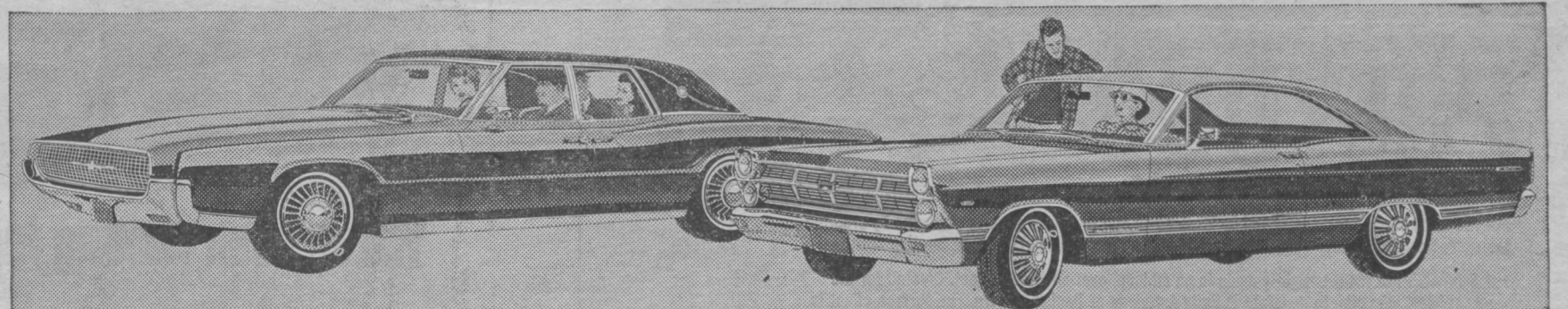
1967 Mustang Hardtop—bred first to be first



1967 FORD XL 2-Door Hardtop—the ultimate in sports/luxury cars



1967 FORD LTD 2-Door Hardtop—one of the world's quietest luxury cars



1967 Thunderbird Four-Door Landau—one of three all-new Thunderbirds

1967 Fairlane 500 Hardtop—the car that gets sportier and more popular every year

**18 Fords:** The strongest, quietest, best built Fords in history. Choose from luxurious new LTD's, sporty XL's, stylish Galaxies, Customs and wagons.

**3 Mustangs:** Bred first... to be first. All-new hardtop, convertible and fast-back 2+2. Mustang is longer, wider, sportier than ever. And more than ever designed to be designed by you.

**3 Thunderbirds:** Unique, exciting, the ultimate in luxury. There are two new

two-door models, and for the first time in history... an elegant new four-door.

**13 Fairlanes:** Big-car roominess and performance in a lean middleweight. You can pick from exciting XL's and GT's, convertibles, smart sedans and wagons.

**10 Falcons:** Low price and big economy combined with new luxury. Some people even call them short limousines. Choose from classy Sports and Club Coupe, sedans and wagons.

### Better Ideas from Ford for '67...

SelectShift Cruise-O-Matic transmission that shifts automatically and manually... automatic door locking... Comfort-Stream Ventilation that lets you close windows, yet be refreshed by a silent flow of air... adjustable Tilt-Away Steering Wheel... automatic speed control for foot-free turnpike cruising... a Magic Doorgate on wagons that swings out for people and down for cargo. And for '67, Ford Motor Company Lifeguard-Design safety features are standard on all models. Ride Ford's new wave for '67!

You're ahead in a

**FORD**  
MUSTANG • FALCON • FAIRLANE  
FORD • THUNDERBIRD



# SPERRY FORD SALES

South Seton Avenue

Emmitsburg, Md.



# WOMEN'S HEALTH

By Elizabeth Stewart  
Women's Medical News Service

**Increase In Golden Anniversaries**  
This appears to be the year of the Golden Anniversary. More than 160,000 American couples will share with President and Mrs. Dwight Eisenhower the pleasure

of celebrating 50 years of marital togetherness. And chances are that an increasing number of married folk will live to celebrate that connubial milestone.

This happy news comes from Metropolitan Life Insurance Company statisticians who note that when Ike and Mamie were married the chances were only about

one in six that a man aged 25 and a girl of 19 would both survive the next 50 years. Now the chances are about one in three that both will survive to the Golden Anniversary.

The experts note that, alas, survival of couples a half century after marriage doesn't mean they will necessarily celebrate the anniversary together, divorce rates being what they are. Nonetheless, advances in medicine have literally added years to our lives — including our married lives.

**Nursing Mothers Do Get Pregnant**  
The myth that nursing mothers

can't become pregnant is just that, a myth, scientists agree. A British physician reported at the recent World Congress on Fertility and Sterility that ovulation (the monthly release of the ovum) is retarded but by no means prevented by lactation. And ovulation can occur in women who are nursing weeks before menstruation resumes.

The physician warned that use of a contraceptive should not be delayed until the end of the nursing period in the mistaken notion that conception can't take place.

**Utility Company Plans New Station**  
J. Lee Rice, Jr., president of Allegheny Power System, and Charles D. Lyon, president of The Potomac Edison Company—a part of Allegheny Power—announced today construction of a new 1,080,000 kilowatt coal-fueled electric generating station.

The station, to be located on the Monongahela River in southwestern Pennsylvania, will cost an estimated \$130 million and will consist of two 540,000 kilowatt

# Emmitsburg Chronicle

EMMITSBURG, FREDERICK COUNTY, MARYLAND  
Published weekly on Friday by the CHRONICLE PRESS INCORPORATED, South Seton Avenue, Emmitsburg, Maryland 21727. Telephone 301-447-5511.  
CHARLES ARTHUR ELDER, Editor-Publisher

All Communications and Checks intended for this Paper should be addressed and made payable to the CHRONICLE PRESS INCORPORATED, Emmitsburg, Md. 21727.

Copy for Advertisements must be received in this Office not later than Tuesday morning to insure publication in the current week's edition. Advertising rates furnished upon request. Subscription rate, \$3.00 per year in advance.

Entered as Second Class Matter at the Postoffice at Emmitsburg, Maryland, under the Congressional Act of March 3, 1879.



**WE DELIVER**

**CALL OUR Order Department**  
Toll Free From Hillcrest Exchange  
ASK OPERATOR FOR ENTERprise 9-3794

**THE CAVETOWN PLANING MILL CO.**  
Cavetown, Md.

- ROAD STONE
- FREE STATE MASONRY MORTAR
- READY-MIXED CONCRETE
- MASONS' LIME
- AGRICULTURAL LIMING MATERIALS

**M. J. GROVE LIME COMPANY**  
A Division of the Flintkote Company

Phone Thurmont 271-6381 — Sales Office, Frederick 662-1181

## LEGAL

### EXECUTORS' NOTICE

This is to give notice that the subscribers have obtained from the Orphans' Court of Frederick County, in Maryland, letters Testamentary on the estate of CHARLES RUSSELL ANDREW late of Frederick County, Maryland, Deceased. All persons having claims against the deceased are warned to exhibit the same, with the vouchers thereof, legally authenticated, to the subscribers, on or before the 26th day of March, 1967 next; they may otherwise by law be excluded from all benefit of said estate. Those indebted to the deceased are desired to make immediate payment.

Given under our hands this 19th day of September, 1966.  
STANLEY ANDREW  
RICHARD ANDREW  
And VERA EIKER

Executors  
BENJAMIN B. ROSENSTOCK  
Attorney

True Copy—Test:  
THOMAS M. EICHELBERGER  
Register of Wills for Frederick County, Md. 9/23/66

## Utility Company Plans New Station

J. Lee Rice, Jr., president of Allegheny Power System, and Charles D. Lyon, president of The Potomac Edison Company—a part of Allegheny Power—announced today construction of a new 1,080,000 kilowatt coal-fueled electric generating station.

The station, to be located on the Monongahela River in southwestern Pennsylvania, will cost an estimated \$130 million and will consist of two 540,000 kilowatt

## NATIONAL NEWSPAPER ASSOCIATION AFFILIATE MEMBER



units, the first to be completed in 1970 and the second in 1971. Named the Hatfield's Ferry Station, it is another major phase of APS' half billion dollar expansion program which, by 1971, will bring the system's generating capability to over four million kilowatts.

You can usually judge a person by his or her friends, just like the saying goes.

**MOBILHEAT**  
with RT-98

the fuel oil for easy heating!



AUTOMATIC DELIVERY

**LEWIS E. HAHN**  
Thurmont — Maryland  
Phone 271-9519

**Announcing... THE ALL NEW Performance Proven Delta**

**SUPER PREMIUM HIGH PERFORMANCE Full 4-Ply NYLON TIRES**

- ★ NEW CONTINENTAL WRAPAROUND DESIGN!
- ★ DESIGNED, TESTED AND PERFORMANCE PROVEN FOR MAXIMUM MILEAGE!
- ★ SOLD WITH A LIFETIME GUARANTEE!

**THE PREMIUM TIRE THAT SELLS FOR LESS THAN PREMIUM PRICES!**



THE SIGN OF QUALITY TIRES

Premium Grade tires for less than the price of 1st grade  
Special Introductory Price  
ONLY ONE-HALF OF LIST PRICE

**Quality-tire-S-ervice**

East Main Street Emmitsburg, Md.

**FALL CHECK-UP**

LET US CHECK YOUR

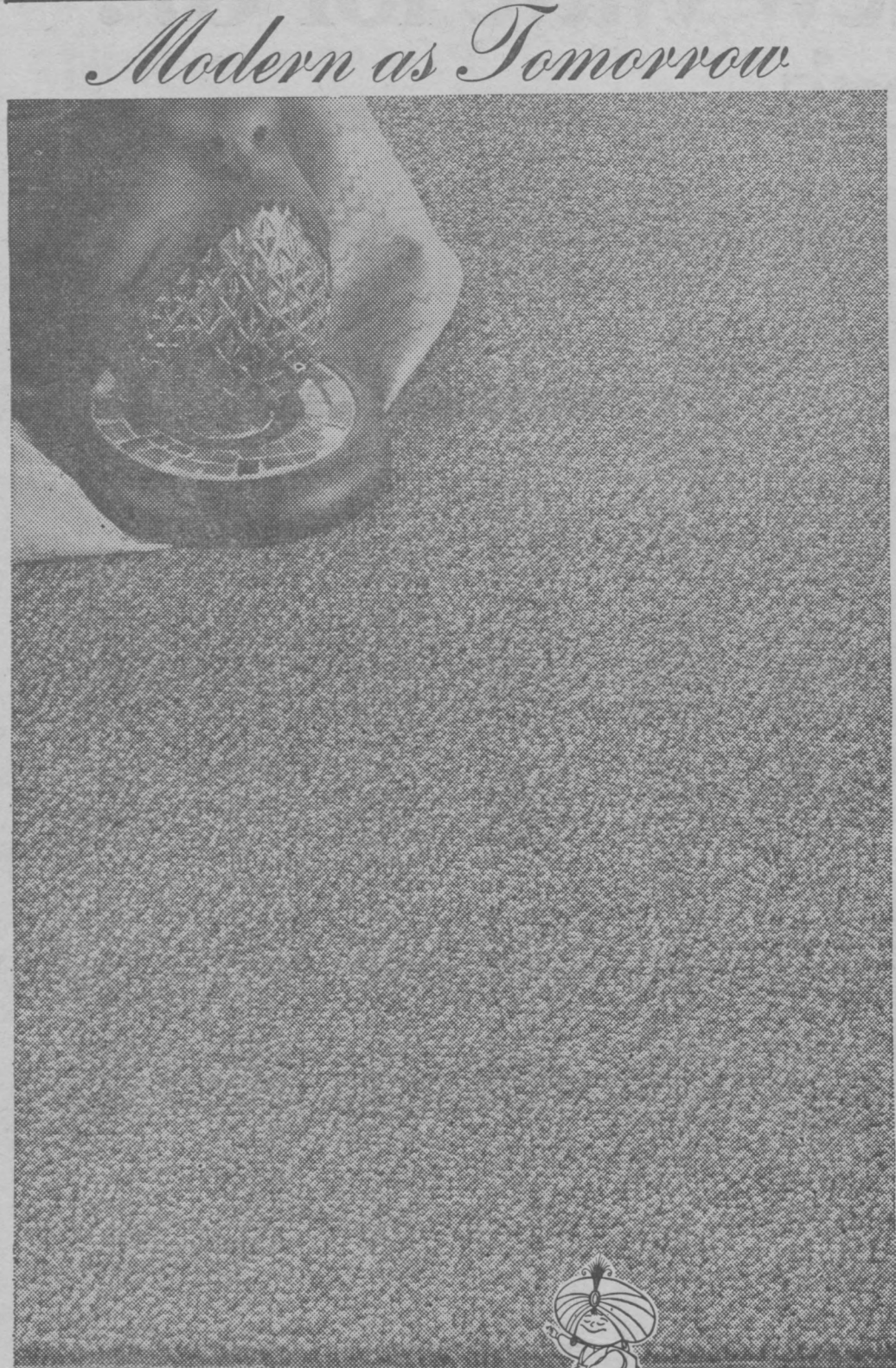
Spark Plugs — Ignition Points — Muffler  
Oil Filter — Air Filter — Fan Belt

FOR DEPENDABLE SERVICE CALL

**KEEPERS ESSO STATION**

Charles E. Keepers, Prop

EMMITSBURG MARYLAND



# POLYDUO

A MASLAND MATCHMATES BROADLOOM 100% Herculon® Polypropylene Olefin fiber pile

POLYDUO has been especially styled by Masland to add to family pride in the home by creating the exceptional in carpet beauty, color and texture. Here are POLYDUO'S decorating features:

**THE SURFACE:** POLYDUO is tightly made in an all-loop, over-all tweed effect. Created for the young-at-heart who plan to decorate in Early American or Danish Modern. The surface effect is exciting, new, interesting in hue and color.

**THE CONSTRUCTION:** The carpet pile is fashioned of three-ply, three-color moresque yarns in Herculon polypropylene olefin fibers—fiber that is fade resistant, highly non-absorbent and free from static build-up. Fiber that is low in specific gravity—so there is more actual yarn per pound and more carpet pile per square yard. This marvelous pile is backed again by polypropylene and then double backed with lamination to assure dimensional stability underfoot.

**THE COLORS:** Distinctive—Tweed colorings that meet the taste of the modern-minded. Colors that won't fade and hide soiling and footprints. Colors that blend easily with your choice of decor.

**THE VALUE:** Hard to beat—an outstanding value for those badgered by tight budgets.

From the Masland Matchmates Collection—the only carpet collection designed by a woman for women who love decorating their own homes. See POLYDUO today!

only \$6.50 per sq. yd.

# WENTZ'S

121 BALTIMORE STREET

GETTYSBURG, PA.

# Command Performance Camaro By Chevrolet



Camaro Sport Coupe with style trim group you can add.

**You've been waiting for a Chevrolet like this. Now it's here.**

Camaro! Long, low hood. Short rear deck. Big-car stance for stability. Strato-bucket seats. A 140-hp Six or 210-hp V8, depending on model. Camaro gives you a car full of comforts from carpeting on the floor to vinyl upholstery all around. There's a lot of security, too, with new safety features like the GM-developed energy-absorbing steering column. Camaro! Sport coupe or convertible. You can order a Rally Sport with hideaway headlights or an SS 350 with Camaro's biggest V8. See your Chevrolet dealer now!



Everything New That Could Happen . . . Happened! Now, at Your Chevrolet Dealer's!

19-2654

## STULL-DOUGHERTY CHEVROLET, INC.

THURMONT

MARYLAND



# RCA VICTOR WEEK

Three cheers! It's here!  
First showing of new 1967 models

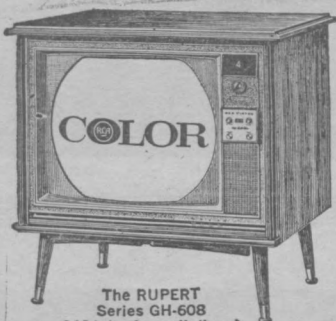



## FREE Rollabout Stand

Table-top model with rollabout stand is within reach of virtually every budget. Rectangular RCA Hi-Lite Tube with Perma-Chrome for locked-in color fidelity. More color than ever this year—and you'll enjoy it more on RCA Victor!

Stand & TV Only \$529.95

## Big Values in Color!



The RUPERT Series GH-608  
21" tube (overall diam.)  
267 sq. in. picture



The DALTON Series FH-544  
25" tube (overall diag.)  
295 sq. in. picture

This budget-priced console features performance-proved New Vista® 25,000-volt chassis, super-powerful New Vista VHF and Solid State UHF tuners, extended-range 6" oval duo-cone speaker.

\$529.95



The PROVIDENCE Series CH-354  
23" tube (overall diag.)  
282 sq. in. picture

## BIG SCREEN VALUE!

The charm of Early American styling is combined with powerful New Vista® performance in the RCA Victor lowboy. Tinted RCA Pan-O-Ply picture tube and New Vista 22,500-volt chassis (design average).

\$269.95

## Black & White TV Buys!

## FREE

### Matching Caster Base

Here's big-screen New Vista television for the entire family! RCA Pan-O-Ply picture tube brings you sharp pictures with sparkling detail. 20,000 volt chassis (design average) provides unexcelled reception in any TV signal area.

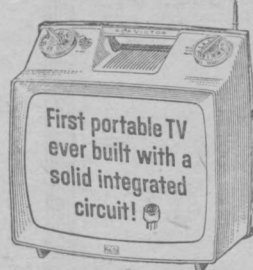
\$189.95



The COOPER Series BH-204  
23" tube (overall diag.)  
282 sq. in. picture

## FREE ROLLABOUT STAND

when you buy any of these portable TV models



The CHERUB Series AH-032  
\*12" tube (overall diag.)  
74 sq. in. picture

Choose this powerful RCA Victor Minikin®-12 for your personal TV. Transistors replace all receiving tubes—run cool, last indefinitely. One-set VHF fine tuning. "Personal Sound" earphone included.

TV & Stand 139.95

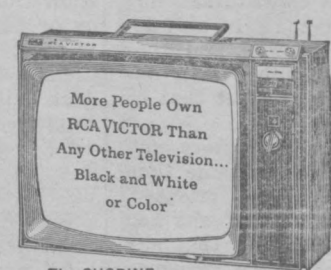
\*One Tube Rectifier



The SPORT Series AH-066  
19" tube (overall diag.)  
172 sq. in. picture

Real luxury at a budget price. Powerful 20,000-volt chassis (design average). Built-in antennas. 5" oval speakers for static-free "Golden Throat" sound. One-set VHF fine tuning. Stay-set volume.

TV & Stand 149.95



The CHORINE Series AH-148  
19" tube (overall diag.)  
172 sq. in. picture

Here's fresh, clean styling in a compact "pick-up-and-go" Sportabout that lets you enjoy unsurpassed New Vista all-channel TV at home or away. Powerful 20,000-volt chassis (design average).

TV & Stand 189.95



The ROOMETTE Series AH-054  
\*16" tube (overall diag.)  
125 sq. in. picture

Here's an ideal "second set" with first class RCA Victor features. Top-front controls and speaker. "Sweet 16" 18,000-volt chassis (design average). Built-in antennas.

TV & Stand 124.95

## Combination Offer!

1. RCA Victor 4-speed "Victrola"® Phonograph
2. Astronaut Space Helmet with Built-in Speaker
3. 3-Record 45-rpm Album "Blast Off to the Moon"

Smartly-styled phonograph plays through built-in 4" speaker or through "Personal Sound" earphone. Helmet speaker can be plugged directly into phonograph. Record album contains authentic sounds of a manned moonshot from countdown to splashdown.

\$29.95



The COSMOS VGPS Series

## FREE GIFT Top-Quality 5-Piece Pen Set

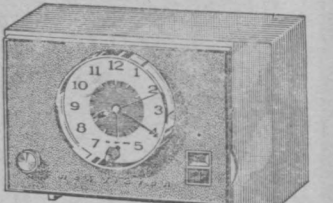
JUST FOR LOOKING  
AND LISTENING

HURRY—WHILE THEY LAST



## Exciting RCA Victor Clock Radio Value

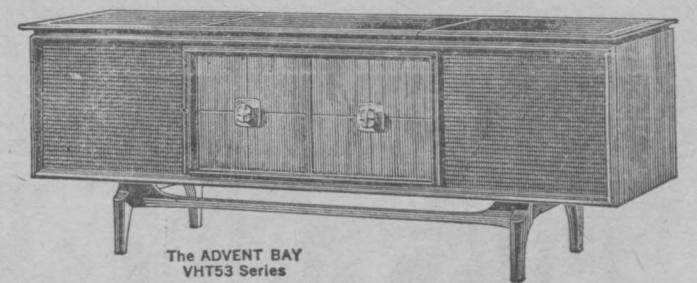
This RCA Victor clock radio features automatic "Wake-to-Music." Quiet, dependable electric clock. 5" oval speaker. Built-in loop antenna. Four tubes plus tube rectifier for sensitive performance.



The NIGHTFALL RHD13 Series

\$19.95

## 5 Deluxe Stereo Records with your purchase of any RCA Victor Stereo Console



The ADVENT BAY VHT53 Series

This sweeping lowboy measures a full six feet from end to end, heightening the dimensional effect of New Vista stereo. Deluxe Studiomatic 4-speed changer with diamond stylus. Solid State FM-AM and FM Stereo Radio. 75-watt Solid State peak power amplifier. Six-speaker sound system.

\$459.95



THE MOST TRUSTED NAME IN ELECTRONICS

# The Matthews Gas Co.

EMMITSBURG, MARYLAND

THURMONT, MARYLAND





## BABSON

## Writes . . .

BY ROGER W. BABSON  
Babson's Point Of View On:  
Japan

BABSON PARK, Mass., Sept. 29 — Though Japan is still plagued by a number of problems and her future role in world affairs is not yet clearly discernible, she is steadily regaining her influence in Asia. Before another decade passes, she may well have recaptured her prewar status as a major world power.

## Extraordinary Comeback

Highly industrialized and more completely democratic than any other Asian nation, Japan has achieved truly amazing postwar economic recovery. More astounding still have been the strides she has made toward building the first really modern society in the Far East.

Now emerging from a moderately prolonged business recession which had its beginnings in 1964, Japan's latest burst of prosperity is reflected in an average rise in urban household income of 10.7% in the first six months of this year over that for the 1965 period. Just a few weeks ago, Premier Eisaku Sato's office disclosed that city-dwelling Japanese families now have average monthly income equivalent to \$184.53. While this is far below the average for U. S. families, it is a new high for Japan—and three times the average family income in most other Asian countries.

## Industrial Capability

Japan's area in square miles is less than four per cent of the area of the United States. Yet there are 100 million people living in Japan, or just about half as many as are living in our country. Although more than half her arable land is still used for growing rice (the chief food) Japan has somehow also squeezed into her small island confines what has become the most concentrated and most readily usable industrial complex in the

entire Far East.

She has made impressive use of her raw material resources to build an iron and steel industry as modern and efficient as any in the Western World. She has also become a leader in shipbuilding and in the manufacture of precision instruments. Her own large merchant fleet contributes mightily to the very favorable international trade balance she has enjoyed for some years now.

## Leadership Potential

The industrial rebirth of Japan in the past 20 years is all the more amazing when one considers that at war's end nearly 50% of her industry lay in ruin. Our enlightened policy in Japan, administered in the late 1940's by Gen. Douglas MacArthur, was a big factor in making possible the economic gains that nation has achieved. But great credit must also be given to the energy, determination, and creativity of the Japanese people themselves.

Primarily, it is this leadership potential that has brought Japan so quickly to the fore in agriculture, industry, the arts, world trade, and scientific achievement. The Japanese are ambitious, resourceful, and hard-working. They can be counted upon to make the most of their not inconsiderable natural resources, their scientific know-how, and their unique geographical position relative to the Asian continent and the Pacific. Our forecast is that in the next ten years Japan will vastly increase her influence in Asia and in the world . . . whether she decides ultimately to draw closer to Peking, to Moscow, or to the West.

## Equal Free World Partner

Today, Japan is at the crossroads. In an Asia racked by war and rumors of war, Japan's early postwar pacifism is gradually giving way to a more realistic posture. She is about to adopt a new constitution. She is about to re-arm. In self-defense, she may well feel that she must develop her own nuclear capability to offset that of Peking.

Tied to China by history and culture, she is at the same time profoundly Western-oriented. She feels strongly that she has a mission in Asia and that she can in time exert an influence on China. But she is also being wooed by Russia and the promise of great trade with Siberia. Will she swing out of the Western bloc of which she has been a part these past 20 years?

Perhaps the answer depends upon whether the West will in fact make her an equal Free World partner.

### Water Conservation Program Available To Farmers Now

Farmers who wish to establish soil and water conservation practices on their farms with Agricultural Conservation Program assistance should visit their Agricultural Stabilization and Conservation Service County office to discuss their conservation problems and file their requests as soon as possible. James M. Voss, Chairman of the Agricultural Stabilization and Conservation State Committee for Maryland, has suggested.

"It's important that farmers file their requests now in order to get the necessary approval and take care of other program details before the time is at hand."

## LEGAL

#### NO. 782 EQUITY ADOPTIONS IN THE CIRCUIT COURT FOR FREDERICK COUNTY, MARYLAND IN EQUITY

**ORDER OF PUBLICATION**  
This is to give Notice that on the 7th day of September, 1966, a Petition was filed in the Circuit Court for Frederick County, Maryland, for the adoption of Dennis Alan Miller, a minor male child.

WHEREUPON, it is ORDERED by the Circuit Court for Frederick County, Maryland, this 7th day of September, 1966, that the Petitioners cause a copy of this Order to be inserted in a newspaper published in Frederick County, once a week in each of four successive weeks, before the 15th day of October, 1966, giving notice to all relatives of said minor, Dennis Alan Miller, and warning them to show cause, if any there may be, on or before the 15th day of November, 1966, why a Decree for the adoption of said minor, Dennis Alan Miller, should not be passed as prayed.

ROBERT E. CLAPP, JR.,  
Judge

W. JEROME OFFUTT and  
E. NEWTON STEELY, JR.,  
Solicitors for Petitioners  
Filed September 7, 1966  
9/16/66

#### NO. 21,433 EQUITY IN THE CIRCUIT COURT FOR FREDERICK COUNTY, MARYLAND CLIFFORD HUGH DRYE VS. FLOURINE ESTELLE DRYE

P. O. Box 180  
Thurmont, Maryland  
VS:  
FLOURINE ESTELLE DRYE  
693 Harris Street  
Concord, North Carolina

## ORDER OF PUBLICATION

The object of this Bill of Complaint is to procure a divorce A VINCULO MATRIMONII by the Complainant, Clifford Hugh Drye, from the Defendant, Florine Estelle Drye.

The Bill states in substance that the Complainant, Clifford Hugh Drye, is a resident of Frederick County, State of Maryland, where he has resided for more than one year last past; that the Defendant, Florine Estelle Drye, is a non-resident of the State of Maryland, and when last heard from was residing at 693 Harris Street, Concord, North Carolina.

The Bill further states that the Complainant and the Defendant were married on October 16, 1948, at York County, State of South Carolina, by a Justice of Peace; that as a result of the said marriage, no children were born; that the Complainant and the Defendant have voluntarily lived separate and apart, without cohabitation for more than eighteen consecutive months prior to the filing of this Bill of Complaint; and that the said separation is beyond any reasonable hope or expectation of reconciliation. The Bill prays that the Complainant, Clifford Hugh Drye, may be divorced A VINCULO MATRIMONII from the Defendant, Florine Estelle Drye, and that the Complainant may be granted such other and further relief as the nature of his case may require.

## ORDER OF COURT

It is thereupon this 6th day of September, 1966, by the Circuit Court for Frederick County, Maryland, sitting as a Court of Equity, ORDERED that the Complainant give notice to the Defendant of the object and substance of this Bill, by causing a copy of this Order to be inserted in some newspaper published in the County of Frederick, once each week for four successive weeks prior to the 15th day of October, 1966, commanding her to be and appear in this Court, in person or by Solicitor, on or before the 15th day of November, 1966, and show cause if any, why a Decree should not be passed as prayed.

ELLIS C. WACHTER  
Clerk of the Circuit Court  
for Frederick County,  
Maryland

WILBUR F. SHEFFIELD, JR.,  
Solicitor for Complainant  
13 West Second Street  
Frederick, Maryland  
Phone: 662-1751  
Filed September 6, 1966  
TRUE COPY TEST  
Ellis C. Wachter, Clerk  
9/16/66

to actually begin work," the Chairman emphasized.

Under the 1967 program cost-share assistance will average about half of the cost of carrying out such conservation practices as establishing and improving vegetative cover, planting trees and improving existing stands of timber, and practices aimed at the conservation and more efficient use of water.

Again in 1967 the program includes practices aimed at encouraging farmers to develop soil and water conservation practices pri-

marily for the benefit of wildlife. These include establishment of wildlife food and cover plots, ponds and shallow water areas, and similar practices with wildlife benefits.

Other practices available include: Seeding of Permanent Vegetative Cover, Planting of Trees, Improvement of Stands of Forests Trees, and Seeding of Winter Cover Crops.

Mr. Voss points out, "Conservation of these soil, water, and

woodland resources benefit everyone even though the majority of practices are carried out on privately-owned farmland. This is why the public shares a part of the cost."

## Serving In Vietnam

SAIGON, Vietnam — Staff Sergeant Eugene F. Pecher of Fairfield, Pa., is now on duty with U. S. combat air forces in Southeast Asia.

Sergeant Pecher, son of Mrs.

Helen G. Pecher of Rt. 2, Fairfield, is an aircraft equipment repairman at a forward combat base. The sergeant is a graduate of Fairfield High School.

The average man has three colds a year, and these cost industry approximately 90 million working days annually.

The international boundary line between the United States and Canada is crossed more often than any other in the world.

## You Can't Beat

- Calendars • Pens • Balloons
- Yardsticks • Purse & Pocket Items

With YOUR name Imprinted

- To — 1. Say "Thank You!"
- 2. Get NEW Business
- 3. Wish "Merry Christmas"

#### AND YOU CAN'T BEAT TOM LENNON'S SELECTION & PRICES

Drop in to the Showroom TODAY! Or Phone 304-725-5712 and Tom will call at your convenience.

#### THE LENNON ADVERTISING CO.

"Specialty Advertising Distributors"  
121 N. Charles, Charles Town, W. Va.

## FOR SALE

1961 Oldsmobile, in excellent condition, (like new). Power steering, power drive, power brakes, etc. Hardtop convertible, (one owner). Very reasonable priced for quick sale.

FRED ROEGNER

Superintendent Thurmont Shoe Co.  
Phone 271-3211



Seagram's 7 Crown—  
The Sure One,  
is America's most  
"called for" whiskey.

## Complete Stock Of

- BEER • WINE • WHISKEY
- PARTY SNACKS • SOFT DRINKS

### Roger Liquor Store

ANN G. ROGER, Prop.

PHONE HI 7-5151

S. SETON AVE.

EMMITSBURG, MD

STORE HOURS: DAILY, MONDAY - SATURDAY—8 A.M. - 10 P.M.

DELIVERY AND DRIVE-IN SERVICE

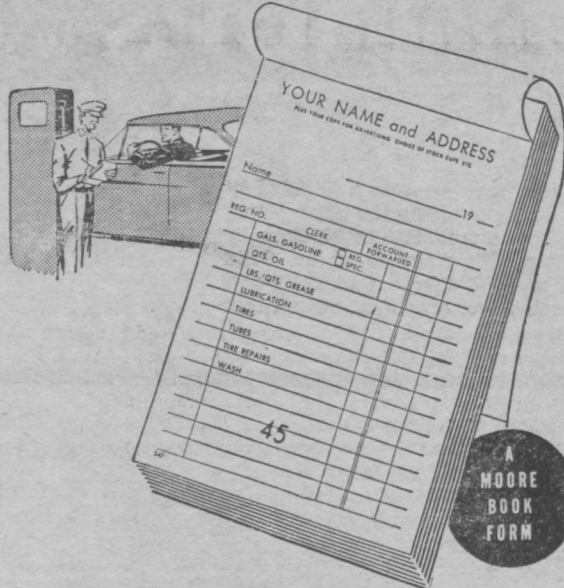
### Have The EMMITSBURG CHRONICLE Delivered To You By Mail For Only \$3.00 Per Year

Name \_\_\_\_\_  
Address \_\_\_\_\_  
City \_\_\_\_\_

## Attention!

### ALL SERVICE STATIONS

ARE YOU KEEPING A RECORD OF YOUR CASH AND CHARGE SALES?



We make it easier . . . faster for you with a Moore personalized cash and charge, 2-part Sales Book.

Standard design, as illustrated above includes your own heading and advertising copy.

Also available as a custom-design form.

Printed in various sizes. Call us today.

CHRONICLE PRESS INCORPORATED

Phone HI 7-5511

Emmitsburg, Md.



With an Impala Sport Coupe you can get all the comforts of home, maybe even more.

## Everything new that could happen...happened!

New styling that speaks beautifully for itself. More things to add than ever before: A new stereo tape system. Comforton automatic heating and air conditioning. Front disc brakes. A better Cruise-Master control system. Plus all the power you could want in a car: up to 427 cu. in. available in Chevrolet's exclusive Turbo-Jet V8. And, standard with every new Chevrolet, a new road feel thanks to improved Full Coil suspension. You really should see the new Chevrolets. Very soon.

And all this for your added safety: GM-developed energy-absorbing steering column, dual master cylinder brake system with warning light, energy-absorbing instrument panel, four-way hazard warning flasher, plus many others.



Everything new's happening now...at your Chevrolet dealer's

STULL-DOUGHERTY CHEVROLET, INC.

THURMONT

MARYLAND

19-2654



# CLASSIFIED



FOR SALE

FOR SALE—Approved Zoning and Health Dept. building lots; wooded, hard road; near Emmitsburg. Phone 447-3451. 9/30/2tp

FOR SALE—Nice home site on old Rt. 15. Approx. 250'x100'. Natural gas, school bus stop, beautiful view, \$2,000. Shriver Realty, Emmitsburg. Phone 447-2180 or 447-5121. 9/23/2t

FOR SALE—Used Westinghouse Refrigerator, good condition, \$25. Emmitsburg Feed and Farm Supply, E. Main St. 9/23/2tp

FOR SALE—Wood or coal Heatrola; good condition; cheap. Phone 271-2895. 1t

FOR SALE—Timothy seed, 99% pure. Paul Beale, phone 447-5493. 9/9/4t

FOR SALE—Work Shirts, Pants, Jackets, Gloves, Rubber Footwear. We give S&H Green Stamps. Emmitsburg Feed and Farm Supply, E. Main St. 1t

FOR SALE—Oil space heater, fairly new. Phone 447-5671. 1t

FOR SALE—Holland Bulbs—Many species. Emmitsburg Feed and Farm Supply, E. Main St. We give S&H Green Stamps. 1t

FOR SALE—1958 Plymouth; good tires and engine. Phone 447-5511. 1t

FOR SALE—Heatrola, heats five rooms; good condition. Priced for quick sale. Emma Eckendrode, phone 447-3183. 1tp

FOR SALE—Double building lot, 90'x300', in town, with all utilities, \$2,600. SHRIVER REALTY Phone 447-2180 or 447-5121 9/30/2t

FOR SALE—All Types of Awnings ALUMINUM SIDING Storm Door & Windows Fern Ohier - Gettysburg, Pa. Phone EDgewood 4-4612

FARMERS and DAIRYMEN Terramycin Mastitis — Scours Tablets Injectables All Veterinarian Supplies PEOPLES DRUG STORE Gettysburg, Pa. 1t

## NOTICES

NOTICE—Card Party and Fashion Show, sponsored by Alumnae Association of St. Joseph College, Student Center, 1:30 p.m., Saturday, Oct. 1. Prizes and refreshments. Admission \$1.25. Public welcome. 1t

NOTICE—Baton instruction by a certified N.B.T.A. instructor. For information contact Mrs. Jane Darkis, Emmitt House, Emmitsburg, Md. 9/30/2tp

NOTICE—We now have a new supply of scratch pads on hand. Come and get them while they last. Chronicle Press Inc. S. Seton Ave. 1t

WANTED—Waitresses, full and part-time, experience preferred but not necessary as we train you. Apply in person at the Mt. Manor Restaurant, Emmitsburg, Md. 9/23/3t

NOTICE—Will do ironing in my home. Phone 447-2550. 9/23/3t

FOR SALE—Used 4-burner electric stove, also small electric refrigerator. Priced for quick sale—both only \$25. Phone 447-5511. 1t

GUNS WANTED Gene's Gun Shop Emmitsburg, R.D. 2, Md. Guns bought, sold and repaired 9/2/8t

WHITE AUTOMATIC—1966 zig-zag sewing machine, 3-drawer desk. Makes button holes, monograms, sews on buttons and sews with twin needles. Take over balance for \$47.60 or pay \$1.25 a week. Call White Sewing Center, collect, 663-5420. 1t

ATTENTION FARMERS Hauling to Auction Everyday J. E. WATKINS Dealer in Livestock Emmitsburg, Md. Phone 447-2347 1t

CUSTOM SLAUGHTERING AND PROCESSING OF BEEF Cut and wrapped for the freezer to your specifications. NORMAN SHRIVER, JR. Phone 447-2255 - Emmitsburg, Md. We sell beef by half or quarters 9/23/2t

NOTICE—Rummage Sale, sponsored by the Senior Class of St. Joseph College. Friday, September 30, 1966, 4 to 7 p.m., and Sat., Oct. 1, 1966, from 10 a.m. to 1 p.m., at the Fire Hall in Emmitsburg, Md. Good quality clothes in varied sizes. 9/23/2t

## ATTENTION MARYLAND USED CAR BUYERS!

We have made arrangements to have your car Md. State inspected and any other detail work involved, at our expense when you buy your car from us.

Financing arranged with no money down if necessary to persons with a steady job and good credit record.

10 cars to choose from at all times ZENTZ AUTO SALES Carroll M. Zentz, Owner Phone 334-6116 Gettysburg, Pa. Open Daily 9 a.m. to 9 p.m. 1t

NOTICE—Turkey & Oyster Dinner at St. Paul's Lutheran Parish Hall, Harney, Md., Saturday, Oct. 1, 1966, 12:00 to 7:00 p.m. Adults \$1.75, children, 75c under 6. Cake table. Everyone welcome. 9/23/2tp

LOST the negative to a favorite picture? Have another one made for just 25c at Dave's Photo Supply on Steinwehr Ave., Gettysburg. 9/9/3t

Complete Auto and Body Repair New and Used Cars WANTZ CHEVROLET INC. Taneytown, Maryland Phone 756-6006 Open Thursday & Friday till 9 p.m. 1tp

WEDDING PORTRAITS Groups At The Studio WEDDING ALBUMS Color or Black & White Finishes. Call us for prices. THE LANE STUDIO 34 York St. Gettysburg, Pa. Over 30 Years Experience

RONALD J. SHORB Ceramic Tile Contractor Baths—Kitchens—Flagstone Free Estimates Phone 271-7252 Thurmont, Md.

PIZZA SUBS Carry-Out Service THE PALMS Phone 7-2303 or 7-4426 Emmitsburg, Md.

FOR RENT 3 rooms and bath; Also 5 rooms and bath. Each has kitchen stove, refrigerator, and all utilities furnished. Phone PLymouth 6-6991. William Ledbedder. 1t

FOR RENT—2 furnished Rooms. Call 447-4291 after 5 p.m. 1t

FOR RENT—10x46 Trailer, 1966 model; 2 bedrooms; fully equipped. No children please. Apply Charles R. Wetzel, phone 447-2247. 9/23/2tp

REAL ESTATE

For Sale Thurmont Properties Three bedroom, frame rancher with dining area and basement with den. Located on Sunset Street.

Two bedroom home for small family located near center of Thurmont. Ceramic tile kitchen and bath, awnings, built-in air-conditioner, full basement, single-car detached garage. \$11,100.

Four bedroom frame dwelling on a one acre lot. Single car garage. Oil heat and storm windows. In excellent condition.—\$14,800.

Your home in the mountains. On three acres partly wooded and completely surrounded by a wooded area. Two story frame with 3 bedrooms. Basement has a stone and brick fireplace. Hot water heat, bath. Five miles west of Thurmont —\$15,000.

EDGAR B. PALMER SAMUEL V. PALMER Thurmont Branch Office Baker-Kefauver, Inc., Realtors 8 N. Carroll St. Thurmont, Md. Phone 271-2771

YOU'LL BE SORRY—if you buy any piano before seeing the amazing Kimball Console with four exclusive tone-touch features. Tone-boards are guaranteed for life. Menchey Music Service, 430 Carlisle St., Hanover. 1t

SHOOTING MATCH—Sunday, October 16, 1 p.m. at Stouter's meadow. Benefit Vigilant Hose Co., Emmitsburg. 12 gauge shotguns—shells furnished. Refreshments on sale. Look for directional signs. 1t

SINGER ZIG-ZAG—1966 Singer zig-zag sewing machine. Sew forward and reverse. Blind hems dresses, mends and darts. Take over last 9 payments of \$5.17. Call credit dept. collect, 663-5420. 1t

CARD OF THANKS We wish to take this opportunity to express our deep appreciation and thanks to the many kind friends and relatives who sent Mass cards, floral tributes, cards, food and for the many other acts of kindness and sympathy shown us during the recent bereavement of our beloved wife and mother, Mrs. Eva Warthen. Eugene Warthen and family 1tp

## LEGAL

ADMINISTRATOR'S NOTICE This is to give notice that the subscriber has obtained from the Orphans' Court of Frederick County, in Maryland, letters of Administration on the estate of GEORGE EUGENE MILLER late of Frederick County, Maryland, Deceased. All persons having claims against the deceased are warned to exhibit the same, with the vouchers thereof, legally authenticated, to the subscriber, on or before the 26th day of March, 1967 next; they may otherwise by law be excluded from all benefit of said estate. Those indebted to the deceased are desired to make immediate payment.

Given under my hand this 14th day of September, 1966. JERRY L. WACHTER Administrator W. JEROME OFFUTT and E. NEWTON STEELY, JR. Attorneys True Copy—Test: THOMAS M. EICHELBERGER Register of Wills for Frederick County, Md. 9/16/5t

NOTICE TO BIDDERS The Board of Education of Frederick County, 115 East Church Street, Frederick, Maryland, invites bids on supplying and delivering incandescent and fluorescent lamps for various schools in Frederick County.

Specifications and proposal sheets may be obtained at the Board of Education Office. Sealed bids will be received at the Board of Education Office until 2:00 P.M. (DST), October 17, 1966.

The Board of Education reserves the right to reject any or all proposals and to waive informalities. BY ORDER OF THE BOARD OF EDUCATION OF FREDERICK COUNTY. JOHN L. CARNOCHAN, JR. Secretary-Treasurer 1t

Bid #66-0-3

NOTICE TO BIDDERS The Board of Education of Frederick County, 115 East Church Street, Frederick, Maryland, invites bids on supplying and delivering miscellaneous custodial supplies for various schools in Frederick County.

Specifications and proposal sheets may be obtained at the Board of Education Office. Sealed bids will be received at the Board of Education Office until 10:00 a.m. (DST), Oct. 17, 1966

The Board of Education reserves the right to reject any or all proposals and to waive informalities. By Order of the Board of Education of Frederick County. JOHN L. CARNOCHAN, JR. Secretary-Treasurer 1t

EHS Liners Win First Soccer Game

Emmitsburg High School Tuesday captured the first game of the 1966 Frederick County soccer season with a 4-2 victory over last year's county champions, Middletown, on the local field.

Coach George Kuhn's Liners rallied for three goals in the third period, one a 50-yarder by halfback Steve Wivell. Richard Masser and Jim Seiss also scored in the big third quarter of the game which was played on a wet, slippery field.

Center forward Tom Bidle scored the first goal for the Knights in the second period. The Liners' Forrest Knipple knotted the score with a perfect eight-yard shot and giving Emmitsburg a 1-1 tie at the half.

Wivell booted his goal from mid-field after Masser scored from 10 yards out and after Seiss' shot. Outside left Don Bartlett got Middletown's second score in the final frame.

## School Board

### Debates New Post

The recent decision of the Frederick County Board of Education to create the position of director of logistical services for the next fiscal year was not unanimous.

Chris T. Mathews, a board member, voted against the measure.

The logistics director will be paid \$12,700 a year with the duties of managing the construction and maintenance of buildings, school operations such as custodial services, warehousing, inventory and stock control and transportation services, including school buses and staff vehicles.

Mathews said he voted against the move because he felt creation of the job was not necessary.

## Feature Film

### To Be Projected

There will be a free showing of the film, "Anarchy USA", on Monday, October 3, 8 p.m., at the Blue Ridge Summit Fire Hall.

To learn the facts, every patriotic American citizen should see this film and become aware of the infiltration of the Civil Rights Movement which presents a total disregard, lawless confusion, and disorder of our Government.

Come and make your own appraisal. The public is invited.

THURSDAY NIGHT LADIES' BOWLING LEAGUE (Rainbow Lanes)

	W	L
The Raft Restaurant	7	1
Ridge Homes	6	2
Texaco Stars	6	2
The Clowns	4	4
Village Liquors	4	4
Koontz's Snack Bar	3	5
Alley Kats	1	7
Screwballs	1	7

September 22 Results  
The Raft 4; Screwballs 0  
Texaco Stars 4; Koontz's 0  
Ridge Homes 4; Alley Kats 0  
The Clowns 3; Village Liquors 1  
High game and set, 154, 373, B. Garver (The Clowns); high team set, 1495, Texaco Stars.

CHARLES A. BROWN Charles Allen Brown, 68, Thurmont, died Monday in Frederick Memorial Hospital. Born in Franklin County, the son of the late David M. and Laura Smith Brown, he was a member of the United Brethren Church in Lantz.

Surviving are his wife, Mrs. Hilda Arnsperger Brown; four sons, Charles W. Brown, Greenville, Ky.; Paul R. Brown, Lewisville; Robert M. Brown and Donald M. Brown, both of Thurmont; two daughters, Mrs. Agnes Mordorf, Emmitsburg, and Mrs. Pearl Renner, Ladiesburg; 16 grandchildren and three great-grandchildren. One sister, Mrs. Harry Baugher, Lantz, also survives. Funeral services were held on Wednesday afternoon at 2 o'clock at the Creager Funeral Home, Thurmont, with the Rev. Harry E. Krone officiating. Interment was made in Blue Ridge Cemetery.

Clapp In Running For Judgeship

Circuit Court Judge Robert E. Clapp, Jr., of Frederick, is one of four recommended by the Maryland State Bar Association for a vacancy on the state Court of Appeals.

Others nominated by the Bar Association were Atty. Gen. Thom-

as B. Finan, Circuit Court Judges Irvine H. Rutledge of Washington County, and Ralph G. Shure of Montgomery County; and David W. Byron, a Hagerstown lawyer.

Finan is considered to have the inside track for the \$25,000-a-year post. He ran third in the recent Democratic Primary for the party's gubernatorial nomination.

The vacancy occurred with the recent retirement of Chief Judge Stedman Prescott.

Clapp is currently a candidate for re-election to the 15-year term of associate judge in the Sixth Judicial Circuit, Frederick County. He was appointed to the bench, a \$22,500 post, in 1964. His term expires this year.

## RETIREES

Charles T. Naylor, son of the late Mr. and Mrs. George C. Naylor, Emmitsburg, has retired after 25 years service as a civilian employee with the United States Air Force. Mr. Naylor held the positions of Budget Officer and Management Analyst with the Military Air Transport Service and the Air Force Systems Command during this period. Mr. Naylor suffered a severe heart attack June 1, 1966, but has progressed satisfactorily and is home at his residence, 6403 Roberts Drive, Temple Hills, Maryland.

## Fiery Services Held

Funeral services for Victor D. Fiery, who died Monday, Sept. 19 at his home near Emmitsburg, were held last Thursday at St. Paul's Church near Clearspring.

The Rev. J. Wade Hoffman, pastor of the United Church of Christ in Hagerstown, and the Rev. John C. Chatlos, pastor of the United Church of Christ in Emmitsburg, officiated.

Bearers were Frisby Fiery, Robert K. Fiery, Joseph P. Fiery Jr., Roger Fiery, Glenn Fiery, Victor Fiery, Lester Fiery, William S. Fiery, Louis Schnellby, John Schnellby, and Jack Schnellby. Burial was in the St. Paul's Church Cemetery.

County Seeks Deer Butcher A hunter sent to jail for shooting deer out of season in Fred-

AIR-CONDITIONED • Stanley Warner  
**MAJESTIC**  
GETTYSBURG • ED 4-2513

ENDS Sat. Oct. 1  
BOB ROD  
DAY TAYLOR

In  
"GLASS BOTTOM BOAT"  
In Color

Sun.-Tue. Oct. 2-3-4  
BOB PHYLLIS  
HOPE DILLER

In  
"BOY, DID I GET  
A WRONG NUMBER"

Wed.-Sat. Oct. 5-8

"DEAR JOHN"

—COMING SOON—

"Wild Angels"

"Fireball 500"

"Goldfinger and

Dr. No"

## HELP WANTED - LABORERS

WORKING OVER 40 HOURS A WEEK AT BLOCK PLANT

Apply THOMAS, BENNETT & HUNTER, INC.

ROUTE 2, THURMONT, MD.

Phone 271-2200

## COLLEGE ESTATE TOWN

### HOUSES & APARTMENTS

FREDERICK, MARYLAND

Next to Frederick Shopping Center on Rt. 15, Ex. 7A

- \* Fully Air-Conditioned
- \* Wall-to-Wall Carpeting
- \* Swimming Pool — Wading Pool
- \* Livingroom Drapes
- \* Window In Every Kitchen
- \* Pets Welcome
- \* Garbage Disposals & 2-Door Refrigerators

NO, NOT A MISPRINT — ALL UTILITIES INCLUDED

1, 2, 3, and 4 Bedroom Units From \$123.00

Resident Manager, Phone 663-9514

LANDGREEN REALTY INC.

## INSURANCE

E. J. Richardson & Sons  
Established 1847  
Due to weather and children, we are now keeping full hours at the house on Crystal Fountain Rd., and appointments at 4 Federal Ave. Come to see us "up the mountain" or call and we'll meet you at Federal Ave.  
Associate—Silver Key Realty  
Have immediate buyers for Farms—Co-op Listings Invited  
Richardson Insurance Agency  
Phone 447-2181 - Emmitsburg

## NEW LISTING

3 BEDROOM HOME IN TOWN; NICE KITCHEN WITH LARGE OLD FIREPLACE; BATH; LIVINGROOM and DININGROOM; CELLAR.

\$9,000

—Financing Available—

## SHRIVER REALTY

WEST MAIN ST EMMITSBURG, MD.

Phones: 447-2180 or 447-5121

## —PROTECT YOUR LIVESTOCK—

### POST YOUR PROPERTY

NO HUNTING — NO TRESPASSING

## SIGNS

5c Each

CHRONICLE PRESS INC.

S. Seton Ave. Emmitsburg, Md.

## It's Feed and Seed Time Now

For Best Results Use Scotts Turf Builder and Lawn Seed

Low Price Lawn Seed 39c lb. and up

5,000 sq. ft. bag \$4.95

Spreaders Loaned No Charge for Applying

**REDDING'S**

30 York Street We Give S&H Green Stamps

GETTYSBURG, PA.



- 1963 Corvair 2-Dr. Monza; 4 Spd.; Bucket Seats.
- 1963 Ford Galaxie 2-Dr. H.T. 406 V-8; 4 Spd.; Stick; Ex. Clean
- 1963 Ford Galaxie 2-Dr. H.T.; Fully Equipped; Like New.
- 1963 Ford Galaxie 4-Dr.; Fully Equipped; Very Clean.
- 1962 Ford Galaxie 4-Dr. V-8; Fully Equipped.
- 1962 Falcon 2-Dr.; Bucket Seats; R&H.
- 1962 Ford Galaxie 2-Dr. H.T.; Fully Equipped; Extra Clean.
- 1961 Falcon 2-Dr.; Auto.; R&H.
- 1961 Ford 4-Dr.; 6 Cyl.; R&H; Very Clean
- 1961 Falcon 4-Dr.; 6 Cyl.; R&H; Std. Shift.
- 1960 Falcon 2-Dr.; 6 Cyl.; Std. Shift; R&H.
- 1960 Ford 4-Dr.; Std. Shift; R&H.

- 1963 Chevrolet 1/2-Ton 8-Ft. Pickup; R&H.
- 1961 Chevrolet Panel, 1/2-Ton; New Paint.
- 1955 Ford Pickup, 1/2-Ton; Custom Cab; New Paint.

END OF YEAR SALE ON ALL NEW FORDS IN STOCK

## Sperry Ford Sales

PHONE 447-5131

EMMITSBURG, MD.



### Mount Impressions

By Thomas C. Callahan

The college folk are back. Peace is ended. Bedlam reigns in potentially the quietest town in the world.

As in-coming freshmen are struggling off their amazement at the amount of rules and dogs on campus, upperclassmen are looking ahead to that one time of year that makes mountain life worth living—the basketball season. The class of 1970 will discover on their first leave home that if any glimmers of recognition are flashed when the title: Mount Saint Mary's is flaunted it will be due to a single basketball season or two departed Irishmen. Mount Saint Mary's is a basketball school.

The college catalogue divides the athletic program into three categories: varsity sports, intramural sports, and free play activities. Defining free play activities is a task to which this writer is unequal, but a workable definition of intramural sports is anything besides basketball. As a result, sports-minded students spend autumn following the fortunes of their high school football teams and the Colts. To these, cross country is a phrase describing California, and soccer, a game that they think Pete Dawkins played after he left West Point.

Most would say that this is natural, but why? How is it that a student body can be so obnoxiously loyal to one sport and so insultingly missing from the others? Analogous to the feelings of our non-hoopster athletes must surely be those of the Baltimore Orioles in '64. Two games out of first place they played a Sunday afternoon game before eight thousand people because those pride of the Chesapeake, clam-whammin' (etc.) Colts were televised. It kinda made money the only reason for winning a pennant. Well, football is tougher and faster

er and more dangerous. Yet, soccer is these to basketball. Is it essentially the shorter season, names like Unidos and Berry, or what? What makes Colt fans rush in where Oriole fans veer from treading, namely through the turnstiles of the stadium? It's championships. The Colts are a winner. The Mount basketball team is a winner. Boxer Sonny Liston was a "bad guy" but a winner, so we read about him, argued about him. Now he's a loser and we don't even know where he is.

If you live in a town where your team always wins, winning gets to be boring; and, from this boredom, Shea stadiums are built. This writer is not bored with basketball, just disinterested in September. Tomorrow, the soccer and cross-country teams representing Mount Saint Mary's in the Mason-Dixon Conference open their seasons against American University. Senior Pete Johnson will not be in the goal this year, electing wisely to rest the injured knee which kept him on the sidelines for the 65-66 basketball season. A basketball star and fine natural athlete, Johnson stepped onto the soccer field for the first time last year and experienced the contrast in support. "It's a great game, but you almost don't feel like playing. Like we'd play at 2:30, and they'd have a band come and hold a dance the same time."

Tomorrow there's another game at 2:30. It features a sport and a team that are not winners. But the Baltimore Orioles were not winners, and now they're champs.

Service Station, crossed the road and parked some distance away while firemen were summoned. Damage was estimated at \$1,000 with two big tires, wheels and brakes destroyed, and a section of the main frame was burned through.

### Mayor Offers Additional Service To Public

Mayor Guy A. Baker, Jr., announced this week that the Town Office would be open from 6 to 8:30 o'clock on Friday evening, October 7.

The Mayor said this would afford an opportunity for citizens to pay their tax and water bills who find it inconvenient to pay them at the regular hours. He also stated that he, or several members of the Council would be on hand to answer any complaints or suggestions the citizens might have at that time. Should this plan prove satisfactory or beneficial to any of the citizens, Mayor Baker indicated the system might operate on a permanent basis in the future.

### New Church Liturgy Explained

A press release dated September 27 from the United Church of Christ Ministerial Association (The Rev. Edwin O. Wench, President), reveals that a newly developed liturgy for the Lord's Day will be the Order of Worship for the United Church of Christ Congregations of Frederick County on this coming Sunday, the occasion of World-Wide Communion.

This liturgy has been prepared by a committee of theological scholars of the United Church of Christ in consultation with the United Presbyterian Church in the U. S. A. and the Presbyterian Church U. S. The use of the historic structure of word and sacrament in the development of this Lord's Day Service represents the conviction that the unity of Christendom is best symbolized in this tradition from earliest Christian practice in worship. The framers of this new liturgy have explained that theologically, as well as historically, the service expresses the essence of the biblical tradition.

The United Church of Christ Ministerial Fellowship of Frederick County originally recommended the use of this service for all its parishes of the area in order to reflect the ecumenical nature of World-Wide Communion Sunday.

The Sacrament of the Lord's Supper will be observed at the regular 10:45 a.m. Worship Service on Sunday. All members of the congregation are urged to be in attendance at this observance of World-Wide Communion.

### State Scholarships To Be Held

The Maryland State Scholarship Board announces plans for conducting the state-wide competitive examination for the three State Scholarship Programs. The examination will be held Saturday, Nov. 19 in test centers located throughout the state.

A student who takes this competitive examination may qualify himself as an eligible candidate for a General State Tuition, a Teacher Education or a Senatorial scholarship. A student who has not previously attended a school or college rank may compete for any one or all three of these State scholarships. Students already attending college may compete only for a Teacher Education or a Senatorial scholarship.

Registration for the examination will take place during the

month of October at all public and non-public high schools in the State and at all institutions eligible to participate in one of the scholarship programs.

Further information may be obtained from the counselor or principal in each high school. A pamphlet describing in detail the three State Scholarship Programs may be obtained from the State Scholarship Board, 2100 Guilford Ave., Baltimore, Md. 21218.

### Hospital Report

**Admitted**  
Ray F. Gigeous, Emmitsburg. Dr. John J. Dillon, Blue Ridge Summit.  
**Discharged**  
Mrs. Wm. Rowe, Emmitsburg. Mrs. Bernard Welty and infant daughter, Emmitsburg R1.  
**Births**  
Mr. and Mrs. Donald E. Wivell, Emmitsburg R2, son, Thursday, Sept. 22.

### Mount St. Mary's Sports Schedule

#### BASKETBALL

DECEMBER	
1 Shippensburg	A
3 Hampden-Sydney	A
5 Shepherd	H
6 Randolph-Macon	H
8 Miami U.	Civic Center
15 Catholic U.	A
26-27 Delaware Classic	
Salesianum High, Wilmington, Del.	
Cheney - Mt. St. Mary's	
Fairleigh-Dickinson - Tenn. State	
JANUARY	
5 Loyola (Md.)	Civic Center
9 Catholic U.	H
12 Towson	A
14 Western Maryland	A
27 Phila. Textile	Palestra
(1st. game at 7:30 P. M.)	

FEBRUARY	
2 Loyola (N. O.)	Civic Center
4 Old Dominion	H
6 American U.	A
9 Shepherd	A
11 Loyola (Md.)	H
13 Western Maryland	H
20 Morgan State	Civic Center
26 Roanoke	A
22 Baltimore	H
26 Washington (Md.)	A
March 2-4 Mason-Dixon Champs.	
Time: 8:00 P. M.	

#### SOCCER

OCTOBER	
1 American	H
4 Towson	H
8 Catholic	A
10 Roanoke	H
18 Randolph-Macon	H
22 Loyola	A
25 Shippensburg	H
29 Washington	A
NOVEMBER	
1 Lynchburg	A
5 Baltimore	A
9 Western Maryland	H
Time: 2:25 P. M.	

CROSS-COUNTRY	
OCTOBER 1 American	H
4 Towson	H
8 Catholic	A
10 Roanoke	H
22 Loyola	A
29 Washington	A
NOVEMBER	
1 Lynchburg	A
8 Gallaudet-Richmond	H
12 Gallaudet Invitational	
19 M-D Championships	
Time: 2:00 P. M.	

## ROAST TURKEY AND OYSTER DINNER

NEW FIRE HALL — ROCKY RIDGE, MD.

SATURDAY, OCTOBER 8, 1966

SERVING 3 P.M. UNTIL?

Children Under 6 Free

—Bring Containers For Carry-Out Dinners—

king of values, **89c**  
ALL FLAVORS



half gallon

**CROUSE'S On The Square**  
—OPEN SUNDAYS—  
PHONE 447-2211 EMMITSBURG, MD.

## Specials For October

2-Pc. Early American Sofa Bed Suite .....\$149.95

2-Pc. Early American Livingroom Suite  
reg. 229.95—NOW \$195.00

Regular Sofa Beds .....\$69.95

Chairs For Lay-A-Way

Platform Rockers and Recliners by McCall

Early American Chairs by Bassett

—RECLINERS by BULLARD—

La-Z-Boy Chairs

Solid Rock Maple Tables .....ea. \$19.95

**ZURGABLE BROTHERS**  
HOME FURNISHINGS  
EMMITSBURG — MARYLAND

### Firemen Douse

#### Truck Fire

Emmitsburg firemen were summoned Saturday night at 11:45 when an Andrew Trucking Co., of North Carolina tractor-trailer, caught fire on Toll Gate Hill, just south of Emmitsburg.

The driver of the truck, firemen said, glanced back and saw that the wheel assembly at the rear of the tractor-trailer, which was laden with cans of beef stew, was afire.

He left Route 15 at Dudash's

Service Station, crossed the road and parked some distance away while firemen were summoned. Damage was estimated at \$1,000 with two big tires, wheels and brakes destroyed, and a section of the main frame was burned through.

Service Station, crossed the road and parked some distance away while firemen were summoned. Damage was estimated at \$1,000 with two big tires, wheels and brakes destroyed, and a section of the main frame was burned through.

Service Station, crossed the road and parked some distance away while firemen were summoned. Damage was estimated at \$1,000 with two big tires, wheels and brakes destroyed, and a section of the main frame was burned through.

Service Station, crossed the road and parked some distance away while firemen were summoned. Damage was estimated at \$1,000 with two big tires, wheels and brakes destroyed, and a section of the main frame was burned through.

Service Station, crossed the road and parked some distance away while firemen were summoned. Damage was estimated at \$1,000 with two big tires, wheels and brakes destroyed, and a section of the main frame was burned through.

Service Station, crossed the road and parked some distance away while firemen were summoned. Damage was estimated at \$1,000 with two big tires, wheels and brakes destroyed, and a section of the main frame was burned through.

Service Station, crossed the road and parked some distance away while firemen were summoned. Damage was estimated at \$1,000 with two big tires, wheels and brakes destroyed, and a section of the main frame was burned through.

Service Station, crossed the road and parked some distance away while firemen were summoned. Damage was estimated at \$1,000 with two big tires, wheels and brakes destroyed, and a section of the main frame was burned through.

Service Station, crossed the road and parked some distance away while firemen were summoned. Damage was estimated at \$1,000 with two big tires, wheels and brakes destroyed, and a section of the main frame was burned through.

Service Station, crossed the road and parked some distance away while firemen were summoned. Damage was estimated at \$1,000 with two big tires, wheels and brakes destroyed, and a section of the main frame was burned through.

Service Station, crossed the road and parked some distance away while firemen were summoned. Damage was estimated at \$1,000 with two big tires, wheels and brakes destroyed, and a section of the main frame was burned through.

Service Station, crossed the road and parked some distance away while firemen were summoned. Damage was estimated at \$1,000 with two big tires, wheels and brakes destroyed, and a section of the main frame was burned through.

Service Station, crossed the road and parked some distance away while firemen were summoned. Damage was estimated at \$1,000 with two big tires, wheels and brakes destroyed, and a section of the main frame was burned through.

Service Station, crossed the road and parked some distance away while firemen were summoned. Damage was estimated at \$1,000 with two big tires, wheels and brakes destroyed, and a section of the main frame was burned through.

Service Station, crossed the road and parked some distance away while firemen were summoned. Damage was estimated at \$1,000 with two big tires, wheels and brakes destroyed, and a section of the main frame was burned through.

Service Station, crossed the road and parked some distance away while firemen were summoned. Damage was estimated at \$1,000 with two big tires, wheels and brakes destroyed, and a section of the main frame was burned through.

Service Station, crossed the road and parked some distance away while firemen were summoned. Damage was estimated at \$1,000 with two big tires, wheels and brakes destroyed, and a section of the main frame was burned through.

Service Station, crossed the road and parked some distance away while firemen were summoned. Damage was estimated at \$1,000 with two big tires, wheels and brakes destroyed, and a section of the main frame was burned through.

Service Station, crossed the road and parked some distance away while firemen were summoned. Damage was estimated at \$1,000 with two big tires, wheels and brakes destroyed, and a section of the main frame was burned through.

Service Station, crossed the road and parked some distance away while firemen were summoned. Damage was estimated at \$1,000 with two big tires, wheels and brakes destroyed, and a section of the main frame was burned through.

Service Station, crossed the road and parked some distance away while firemen were summoned. Damage was estimated at \$1,000 with two big tires, wheels and brakes destroyed, and a section of the main frame was burned through.

Service Station, crossed the road and parked some distance away while firemen were summoned. Damage was estimated at \$1,000 with two big tires, wheels and brakes destroyed, and a section of the main frame was burned through.

Service Station, crossed the road and parked some distance away while firemen were summoned. Damage was estimated at \$1,000 with two big tires, wheels and brakes destroyed, and a section of the main frame was burned through.

Service Station, crossed the road and parked some distance away while firemen were summoned. Damage was estimated at \$1,000 with two big tires, wheels and brakes destroyed, and a section of the main frame was burned through.

Service Station, crossed the road and parked some distance away while firemen were summoned. Damage was estimated at \$1,000 with two big tires, wheels and brakes destroyed, and a section of the main frame was burned through.

Service Station, crossed the road and parked some distance away while firemen were summoned. Damage was estimated at \$1,000 with two big tires, wheels and brakes destroyed, and a section of the main frame was burned through.

Service Station, crossed the road and parked some distance away while firemen were summoned. Damage was estimated at \$1,000 with two big tires, wheels and brakes destroyed, and a section of the main frame was burned through.

Service Station, crossed the road and parked some distance away while firemen were summoned. Damage was estimated at \$1,000 with two big tires, wheels and brakes destroyed, and a section of the main frame was burned through.

Service Station, crossed the road and parked some distance away while firemen were summoned. Damage was estimated at \$1,000 with two big tires, wheels and brakes destroyed, and a section of the main frame was burned through.

Service Station, crossed the road and parked some distance away while firemen were summoned. Damage was estimated at \$1,000 with two big tires, wheels and brakes destroyed, and a section of the main frame was burned through.

Service Station, crossed the road and parked some distance away while firemen were summoned. Damage was estimated at \$1,000 with two big tires, wheels and brakes destroyed, and a section of the main frame was burned through.

Service Station, crossed the road and parked some distance away while firemen were summoned. Damage was estimated at \$1,000 with two big tires, wheels and brakes destroyed, and a section of the main frame was burned through.

Service Station, crossed the road and parked some distance away while firemen were summoned. Damage was estimated at \$1,000 with two big tires, wheels and brakes destroyed, and a section of the main frame was burned through.

Service Station, crossed the road and parked some distance away while firemen were summoned. Damage was estimated at \$1,000 with two big tires, wheels and brakes destroyed, and a section of the main frame was burned through.

Service Station, crossed the road and parked some distance away while firemen were summoned. Damage was estimated at \$1,000 with two big tires, wheels and brakes destroyed, and a section of the main frame was burned through.

Service Station, crossed the road and parked some distance away while firemen were summoned. Damage was estimated at \$1,000 with two big tires, wheels and brakes destroyed, and a section of the main frame was burned through.

Service Station, crossed the road and parked some distance away while firemen were summoned. Damage was estimated at \$1,000 with two big tires, wheels and brakes destroyed, and a section of the main frame was burned through.

Service Station, crossed the road and parked some distance away while firemen were summoned. Damage was estimated at \$1,000 with two big tires, wheels and brakes destroyed, and a section of the main frame was burned through.

Service Station, crossed the road and parked some distance away while firemen were summoned. Damage was estimated at \$1,000 with two big tires, wheels and brakes destroyed, and a section of the main frame was burned through.

Service Station, crossed the road and parked some distance away while firemen were summoned. Damage was estimated at \$1,000 with two big tires, wheels and brakes destroyed, and a section of the main frame was burned through.

Service Station, crossed the road and parked some distance away while firemen were summoned. Damage was estimated at \$1,000 with two big tires, wheels and brakes destroyed, and a section of the main frame was burned through.

Service Station, crossed the road and parked some distance away while firemen were summoned. Damage was estimated at \$1,000 with two big tires, wheels and brakes destroyed, and a section of the main frame was burned through.

Service Station, crossed the road and parked some distance away while firemen were summoned. Damage was estimated at \$1,000 with two big tires, wheels and brakes destroyed, and a section of the main frame was burned through.

Service Station, crossed the road and parked some distance away while firemen were summoned. Damage was estimated at \$1,000 with two big tires, wheels and brakes destroyed, and a section of the main frame was burned through.

Service Station, crossed the road and parked some distance away while firemen were summoned. Damage was estimated at \$1,000 with two big tires, wheels and brakes destroyed, and a section of the main frame was burned through.

Service Station, crossed the road and parked some distance away while firemen were summoned. Damage was estimated at \$1,000 with two big tires, wheels and brakes destroyed, and a section of the main frame was burned through.

Service Station, crossed the road and parked some distance away while firemen were summoned. Damage was estimated at \$1,000 with two big tires, wheels and brakes destroyed, and a section of the main frame was burned through.

Service Station, crossed the road and parked some distance away while firemen were summoned. Damage was estimated at \$1,000 with two big tires, wheels and brakes destroyed, and a section of the main frame was burned through.

Service Station, crossed the road and parked some distance away while firemen were summoned. Damage was estimated at \$1,000 with two big tires, wheels and brakes destroyed, and a section of the main frame was burned through.

Service Station, crossed the road and parked some distance away while firemen were summoned. Damage was estimated at \$1,000 with two big tires, wheels and brakes destroyed, and a section of the main frame was burned through.

Service Station, crossed the road and parked some distance away while firemen were summoned. Damage was estimated at \$1,000 with two big tires, wheels and brakes destroyed, and a section of the main frame was burned through.

Service Station, crossed the road and parked some distance away while firemen were summoned. Damage was estimated at \$1,000 with two big tires, wheels and brakes destroyed, and a section of the main frame was burned through.

Service Station, crossed the road and parked some distance away while firemen were summoned. Damage was estimated at \$1,000 with two big tires, wheels and brakes destroyed, and a section of the main frame was burned through.

Service Station, crossed the road and parked some distance away while firemen were summoned. Damage was estimated at \$1,000 with two big tires, wheels and brakes destroyed, and a section of the main frame was burned through.

Service Station, crossed the road and parked some distance away while firemen were summoned. Damage was estimated at \$1,000 with two big tires, wheels and brakes destroyed, and a section of the main frame was burned through.

Service Station, crossed the road and parked some distance away while firemen were summoned. Damage was estimated at \$1,000 with two big tires, wheels and brakes destroyed, and a section of the main frame was burned through.

Service Station, crossed the road and parked some distance away while firemen were summoned. Damage was estimated at \$1,000 with two big tires, wheels and brakes destroyed, and a section of the main frame was burned through.

Service Station, crossed the road and parked some distance away while firemen were summoned. Damage was estimated at \$1,000 with two big tires, wheels and brakes destroyed, and a section of the main frame was burned through.

Service Station, crossed the road and parked some distance away while firemen were summoned. Damage was estimated at \$1,000 with two big tires, wheels and brakes destroyed, and a section of the main frame was burned through.

Service Station, crossed the road and parked some distance away while firemen were summoned. Damage was estimated at \$1,000 with two big tires, wheels and brakes destroyed, and a section of the main frame was burned through.

Service Station, crossed the road and parked some distance away while firemen were summoned. Damage was estimated at \$1,000 with two big tires, wheels and brakes destroyed, and a section of the main frame was burned through.

Service Station, crossed the road and parked some distance away while firemen were summoned. Damage was estimated at \$1,000 with two big tires, wheels and brakes destroyed, and a section of the main frame was burned through.

Service Station, crossed the road and parked some distance away while firemen were summoned. Damage was estimated at \$1,000 with two big tires, wheels and brakes destroyed, and a section of the main frame was burned through.

Service Station, crossed the road and parked some distance away while firemen were summoned. Damage was estimated at \$1,000 with two big tires, wheels and brakes destroyed, and a section of the main frame was burned through.

Service Station, crossed the road and parked some distance away while firemen were summoned. Damage was estimated at \$1,000 with two big tires, wheels and brakes destroyed, and a section of the main frame was burned through.

Service Station, crossed the road and parked some distance away while firemen were summoned. Damage was estimated at \$1,000 with two big tires, wheels and brakes destroyed, and a section of the main frame was burned through.

Service Station, crossed the road and parked some distance away while firemen were summoned. Damage was estimated at \$1,000 with two big tires, wheels and brakes destroyed, and a section of the main frame was burned through.

Service Station, crossed the road and parked some distance away while firemen were summoned. Damage was estimated at \$1,000 with two big tires, wheels and brakes destroyed, and a section of the main frame was burned through.

Service Station, crossed the road and parked some distance away while firemen were summoned. Damage was estimated at \$1,000 with two big tires, wheels and brakes destroyed, and a section of the main frame was burned through.

Service Station, crossed the road and parked some distance away while firemen were summoned. Damage was estimated at \$1,000 with two big tires, wheels and brakes destroyed, and a section of the main frame was burned through.

Service Station, crossed the road and parked some distance away while firemen were summoned. Damage was estimated at \$1,000 with two big tires, wheels and brakes destroyed, and a section of the main frame was burned through.

Service Station, crossed the road and parked some distance away while firemen were summoned. Damage was estimated at \$1,000 with two big tires, wheels and brakes destroyed, and a section of the main frame was burned through.

Service Station, crossed the road and parked some distance away while firemen were summoned. Damage was estimated at \$1,000 with two big tires, wheels and brakes destroyed, and a section of the main frame was burned through.

Service Station, crossed the road and parked some distance away while firemen were summoned. Damage was estimated at \$1,000 with two big tires, wheels and brakes destroyed, and a section of the main frame was burned through.

Service Station, crossed the road and parked some distance away while firemen were summoned. Damage was estimated at \$1,000 with two big tires, wheels and brakes destroyed, and a section of the main frame was burned through.

Service Station, crossed the road and parked some distance away while firemen were summoned. Damage was estimated at \$1,000 with two big tires, wheels and brakes destroyed, and a section of the main frame was burned through.

Service Station, crossed the road and parked some distance away while firemen were summoned. Damage was estimated at \$1,000 with two big tires, wheels and brakes destroyed, and a section of the main frame was burned through.

Service Station, crossed the road and parked some distance away while firemen were summoned. Damage was estimated at \$1,000 with two big tires, wheels and brakes destroyed, and a section of the main frame was burned through.

Service Station, crossed the road and parked some distance away while firemen were summoned. Damage was estimated at \$1,000 with two big tires, wheels and brakes destroyed, and a section of the main frame was burned through.

Service Station, crossed the road and parked some distance away while firemen were summoned. Damage was estimated at \$1,000 with two big tires, wheels and brakes destroyed, and a section of the main frame was burned through.

Service Station, crossed the road and parked some distance away while firemen were summoned. Damage was estimated at \$1,000 with two big tires, wheels and brakes destroyed, and a section of the main frame was burned through.

Service Station, crossed the road and parked some distance away while firemen were summoned. Damage was estimated at \$1,000 with two big tires, wheels and brakes destroyed, and a section of the main frame was burned through.

Service Station, crossed the road and parked some distance away while firemen were summoned. Damage was estimated at \$1,000 with two big tires, wheels and brakes destroyed, and a section of the main frame was burned through.

Service Station, crossed the road and parked some distance away while firemen were summoned. Damage was estimated at \$1,000 with two big tires, wheels and brakes destroyed, and a section of the main frame was burned through.

Service Station, crossed the road and parked some distance away while firemen were summoned. Damage was estimated at \$1,000 with two big tires, wheels