



# Emmitsburg Chronicle

Weekend  
Weather Forecast  
Below normal by 3-5 degrees. Warmer Saturday through Monday. Some rain expected by Monday.

"READ BY MOST EMMITSBURGIANS"

VOLUME LXXXVI, NO. 26

EMMITSBURG CHRONICLE, EMMITSBURG, MARYLAND, FRIDAY, APRIL 22, 1966

SINGLE COPY 7c

## Most Anything At A Glance

BY ABIGAIL

It has been observed by this reporter that wherever you go these days there is one topic of conversation that dominates over all other areas of discussion. You guessed it—the forthcoming Town Election. This is a most healthful sign and it is encouraging to see so many citizens take an active interest in something which is so important to them. It saddens me when I have to comment on the lackadaisical attitude which many people seem to take when it comes to voting time. Such a situation, however, does not apply to the vital election we will have next Tuesday. Voter enthusiasm is running at a high pitch and indications are that the turnout at the polls may be the highest on record. This is as it should be. We have a Mayor and a Commissioner to elect. These two offices represent 40 per cent of all elective offices in the community. The men who hold these offices are charged with the basic responsibility of making those decisions so fundamental to the future progress of Emmitsburg. To demonstrate our interest in our community we must accept the duty of actively participating in the selection of those men who we believe will best conduct the affairs of our community. Such action on our part is not only constructive in itself but it also demonstrates to the Town Fathers that we, like they, are very much concerned about the problems and progress of Emmitsburg.

While on the subject of the election, it seems appropriate to make a brief comment on the spirited race for the Mayor's office. Personally, I can not recall a three-way race for the office ever occurring before this year. I must say, though that I approve of it most heartily. This situation is also indicative of the continuing and increasing interest of the citizens in the future of the town. Given the interest of the voters, the competency of the candidates, and the definition of the issues, may the best man win.

It appears that more and more of the good burghers of Emmitsburg are giving some thought to the growth of the community. This, of course, goes hand-in-hand with the overall interest in municipal affairs. Various people are inquiring as to what can be done to improve job opportunities at the local level. They seem to be concerned particularly about the availability of work for the young people. If we look around, many instances of growth in the area become readily apparent. However, there is much more that could be done and one sector is that of industrial development. To say this is easy—to accomplish it is a difficult undertaking. One must remember that thousands of communities in the United States would like to improve their industrial structure. Recognizing that industrial development is no simple process, does not imply that it is impossible. What we need is some definite approach to the problem. After all, what do we have and what do we need? How can we proceed until we answer the pertinent questions? I have it on good authority that some people are making inquiries as to proper procedures and approaches to the economic development of a community. This is a good sign and we will have more to say on this subject in a later issue.

## Contribute To Little League

President Thomas C. Harbaugh of the Emmitsburg Little League, has announced the following individuals, businesses and organizations have contributed to the local youth baseball program.

- American Legion Post 121
- VFW Post 6658
- J. Ward Kerrigan
- Mac's Barber Shop
- Dr. W. R. Cadle
- Mt. Manor Restaurant & Motel
- Dr. and Mrs. William Carr
- Roger Liquor Store
- Flohr Lumber Co.
- H. O. Toor Shoe Corp.
- Walter and Edna Crouse
- Dr. D. L. Beagle
- Green-Parrot Tea Shop

## Town Election Tuesday; Houser Withdraws

The Emmitsburg town election, scheduled for next Tuesday, goes into its final stages minus one candidate who has figured in the town election scene for the last five years.

Dr. J. W. Houser, president of the Town Council and the first candidate to file for election as town commissioner, withdrew suddenly from the race on Monday. Dr. Houser mentioned no reason for his withdrawal, but it is rumored that he plans an extended vacation.

During his tenure of five years on the Town Council, Dr. Houser has performed the duties of secretary and treasurer of the Town Council, in addition to his present duties as president. For many years he operated the Emmitsburg Pharmacy until his retirement, but he has continued as a member of the Board of Directors of the Farmers and Mechanics National Bank, Emmitsburg Office.

Dr. Houser has given unsparingly of his time and efforts in the interests of the town of Emmitsburg. Upon being informed of his withdrawal from the race for the position of Town Commissioner, Mayor Ralph Irelan praised Dr. Houser for the excellent job he performed during his term as town commissioner and extended to him the appreciation and gratitude of the town of Emmitsburg for his untiring labors in behalf of the town.

The withdrawal of Dr. Houser leaves Clarence Wachter as the only candidate for Town Commissioner, since the last date for filing for the office was April 15.

The race for mayor is still a three-sided affair, with incumbent mayor Ralph Irelan being opposed by Guy A. Baker, Jr., and Charles B. Shorb. More than 500 Emmitsburg residents are registered to vote in this election and it is expected that the great majority of them will cast their ballots on Tuesday in what has turned out to be a most spirited election. The election will be held in the Town Office between the hours of 12 noon and 7 p.m., Tuesday.

All three candidates are confident of election and have much support among the townspeople. A great deal of interest is being generated in the election this year because of the problems which Emmitsburg must face as a growing community, and it is anticipated that the election on Tuesday will have the greatest turnout of voters in the history of the town.

## MRS. FAE G. SHARRER

Mrs. Fae Gertrude Sharrer, 74, widow of Charles L. Sharrer, Emmitsburg, died Wednesday afternoon at 4:24 o'clock at the Warner Hospital Gettysburg, after an illness of one year. He husband died three years ago. She was a daughter of the late John and Ida (Gearhart) Linn, and was born in Pittsburgh, Pa., but had resided in the Emmitsburg area for the past 68 years. She was a member of Elias Lutheran Church, Emmitsburg, and had served as secretary of the church for 40 years.

Surviving are a daughter, Mrs. Valerie E. Connor, Lansdale, Pa., and one grandchild. Also surviving are the following sisters and brother: Mrs. Ruth Kump and Mrs. Margaret Harner, Littlestown, Pa.; Mrs. Sara White, Gettysburg; Charles Linn, Emmitsburg, and Mrs. Anabel Yeates, Denton, Md.

Funeral services will be held Saturday afternoon at 2 o'clock from the Wilson Funeral Home, Emmitsburg, with the Rev. W. Ronald Fearer officiating. Interment will be in Mountview Cemetery, Emmitsburg. Friends may call at the funeral home this evening (Friday), after 7 o'clock.

## SOFTBALL PRACTICE

The Myers Radio and TV team of the Frederick-Carroll Softball League, will practice on Sunday at 1:30 p.m. on Community Field. All former players and any new players are urged to attend this practice.

Mr. and Mrs. C. Richard Harner, local azelia fanciers, combined business with pleasure last Sunday afternoon. Mr. and Mrs. Harner made a buying trip to the Timonium Fairgrounds, to buy a rare strain of the flowering shrub, and afterward visited with Mr. and Mrs. W. C. Smith, in the Baltimore suburb.

## VFW To Celebrate 20th Anniversary Saturday



NEW AMBULANCE—Pictured above is the new ambulance recently purchased by VFW Post 6658, Emmitsburg, for the use of the people of the community. This is the third ambulance the local veterans' organization has had in its 20 years of existence. The group is celebrating its 20th anniversary this Saturday night in the Post Home on the Square.

Members, Auxiliary, and guests of the Emmitsburg Memorial Post 6658, Veterans of Foreign Wars, will celebrate the 20th Anniversary of the local post Saturday night at the Post Home on the Square.

The local Post, founded and chartered early in 1946, has established itself as one of the outstanding VFW posts in the State of Maryland in the field of Community Service. During the last twenty years the local Post has purchased and maintained three ambulances, provided scholarships

for local students at the college level, purchased equipment and maintained a playground, donated \$1,000 to a local church rebuilding fund, donated \$2,500 to the local Firemen's Building Fund, has annually provided gifts and toys in cooperation with the American Legion for the local school children and the veterans at Victor Cullen Hospital and offered free facilities of the Rowe Annex for wedding parties, dances, and a meeting place for local organizations. In addition, the Post has always supported and donated liberally to worthy causes such as

the Boy Scouts, Little League, Library Fund, and the various health appeals.

Post Commanders over the last 20 years are as follows: Charles Rowe, Vernon Keilholtz, Wales Rightnow, Harold Hoke, Fern Ohler, Philip Sharpe, Thomas Harbaugh, William Topper, Raymond Baker, and Donald Topper.

The present Quartermaster, Lumen F. Norris, has served in that capacity since the Post was organized and is recognized by the Post members as the one person most responsible for the continued success of the organization.

## Little League Tryouts Next Week

Registration for Little League Baseball will be held at Little League Field on April 25 and 27 at 6 p.m. and on April 30 at 1 p.m. Boys 8 to 12 years, League age, are eligible. The League age is determined by the boys age on July 31. New registrants are requested to bring their birth certificates with them.

Boys who registered last year, but did not get on a team, and those who played in the Minor League, are requested to advise the player agent, during registration, as to whether or not they wish to play this year.

Tryouts will be conducted on May 2, 3, 4 and 5, starting at 6 p.m. The annual Player Auction will be held on May 10, at 8 p.m. in the Legion Home. The regular playing season will start Monday, May 23, 1966 at p.m. The complete schedule follows.

- MAY
- 23—Cards vs. Giants
  - 24—Yanks vs. Red Sox
  - 25—Red Sox vs. Cards
  - 26—Giants vs. Yanks
  - 30—Cards vs. Yanks
  - 31—Giants vs. Red Sox

- JUNE
- 1—Giants vs. Cards
  - 2—Red Sox vs. Yanks
  - 6—Cards vs. Red Sox
  - 7—Yanks vs. Giants
  - 8—Yanks vs. Cards
  - 9—Red Sox vs. Giants
  - 13—Cards vs. Giants
  - 14—Yanks vs. Red Sox
  - 15—Red Sox vs. Cards
  - 16—Giants vs. Yanks
  - 20—Cards vs. Yanks
  - 21—Giants vs. Red Sox
  - 22—Giants vs. Cards
  - 23—Red Sox vs. Yanks
  - 27—Cards vs. Red Sox
  - 28—Yanks vs. Giants
  - 29—Yanks vs. Cards
  - 30—Red Sox vs. Giants

- JULY
- 4—Cards vs. Giants
  - 5—Yanks vs. Red Sox
  - 6—Red Sox vs. Cards
  - 7—Giants vs. Yanks
  - 11—Cards vs. Yanks
  - 12—Giants vs. Red Sox
  - 13—Cards vs. Giants
  - 14—Red Sox vs. Yanks
  - 18—Cards vs. Red Sox
  - 19—Yanks vs. Giants
  - 20—Yanks vs. Cards
  - 21—Red Sox vs. Giants

## May Day Festivities Planned At School

Plans for the traditional May Day festivities are in progress at Emmitsburg High School. The date for the annual occasion is May 6, beginning at 1 p.m. The schedule for the day includes selections by the band and glee club, and the traditional May Pole Dance, highlighted by the crowning of the queen.

At approximately 2 o'clock, the tea and fashion show will begin. During this time, an elementary physical fitness program will be held outside under the direction of Mr. Mascara.

Everyone is cordially invited to attend. In the event of inclement weather, all festivities will be held in the auditorium.

## "Circuit Rider" Spends Night Here



HORSEBACK PREACHER—Rev. William Richardson, Methodist Minister from Omaha, Nebraska on his way by horseback to the Methodist 200th Anniversary in Baltimore, being met on the mountain five miles west of Emmitsburg by Rev. Martin Case, local Methodist Minister. Rev. Richardson adjusts his saddlebags while Horace Beale holds his horse, Silver.

Emmitsburg area citizens were treated to a unique experience Monday, April 18, when Rev. Bill Richardson, a Methodist Minister, stopped for the night in the Emmitsburg area on his way from Omaha, Nebraska, by horseback, to the 200th anniversary of the founding of the Methodist Church in America.

Rev. Richardson, a huge, colorful, outspoken six-foot five-inch, 250 pound ex-professional football player left Omaha on February 14 and has been on the road every day since, despite snow or rain or fog. Scornful of help from trailers, his horses walked every bit of the way, except for the heavily travelled tunnels in the Pittsburgh area.

To commemorate the hard riding, hard riding circuit-rider preacher of the 1800's, Rev. Bill was dressed in a coat with tails, heavy, handmade boots, heavy pants and long cape with a large protective collar, and broad brimmed black hat, all patterned after descriptions of the clothes worn by Peter Cartwright, an Illinois Methodist preacher who helped launch Methodism in Iowa in the 1830's. He carried U.S. saddlebags of Civil War vintage. A beard was grown especially for the occasion which made him look older than his young 46.

As Rev. Richardson entered Emmitsburg he was touching his seventh state, covering a distance of over 1200 miles, and was riding his fifth mount, a strikingly beautiful white mare named Silver. Three of his horses "just plain wore out," and one reared up when a train crossed in front of it in Illinois and was fatally injured. Silver which he acquired several states ago from an Amish farmer, was stabled for the night in the barn of Dr. William Carr, an Emmitsburg Veterinarian, and

The Coast Guard's International Ice Patrol is 52 years old this year. They have a total of 10 icebreakers.

care for by Dr. Carr's assistant, Mr. Dave Bushman. Rev. Richardson was welcomed by the local Methodist Minister, Rev. Martin Case, when he met him up on the mountain five miles west of Emmitsburg.

Monday evening, Rev. Richardson preached to a large and spell-bound audience, the local citizenry having been alerted by Rev. Case, and by an interesting news article in the Baltimore Sun. He spent the night at the home of Mr. and Mrs. Paul Beale.

Rev. Richardson graduated from Missouri State College, Ashbury Theological Seminary, and from Garrett Theological Seminary, and has B.A., B.D., and M.A. degrees. He and Mrs. Richardson live at Macksburg, Iowa with four children ages 7, 9, 12 and 14. He started his trip from Omaha, Nebraska, because of the historical significance.

Sponsored by the National Historical Society, twelve Methodist ministers had been selected to ride horseback to Baltimore to dramatize the role of the early circuit-riding preachers, Rev. Richardson having been one of the twelve selected from the 130 ministers who applied for the honor. The riders started from different parts of the country and each is to arrive at the Baltimore Civic Center for the Bicentennial Celebration April 21-24. Rev. Richardson came the greatest distance of them all.

Rev. Bill related many interesting experiences he had during the long two months on the road, such as violent snow storms which lasted for five days at a time, dodging tractor trailers in dense fog when the drivers couldn't see the white horse, eating at homes with hogs running loose in the house; about a few unfriendly people, and many, many friendly people. (Continued On Page 8)

## Daylight Saving Time

Remember to turn your clocks ahead an hour before retiring tomorrow night.

## Present "The Sound Of Music" Tonight, Saturday, at High School

The senior class of Emmitsburg High School presents the popular Rodgers and Hammerstein classic, "The Sound of Music," in special performances open to the public this evening and tomorrow evening at 7:30 p.m. in the Emmitsburg High School auditorium.

The cast has been rehearsing for more than six weeks to make this an outstanding production, and the selection of the movie, "The Sound of Music," this week for an Oscar as the outstanding movie of last year, gave the thespians the added inspiration, if any was needed, to make this a production worthy of an Oscar from the audience.

Original music for "The Sound of Music" was composed by Richard Rodgers, with lyrics by Oscar Hammerstein II. The play was written by Howard Lindsay and Russell Crouse. It is the story of the famous Trapp singing family from Austria. The seven Von Trapp children appear in the musical, although the Baroness Von Trapp has passed away at the time of the play. Emmitsburg audiences may remember that the Baroness Bon Trapp and her fa-



SENIOR PLAY—Pictured is a scene from the Emmitsburg High School senior class production, "The Sound of Music," to be presented in the high school auditorium Friday and Saturday evenings at 7:30 o'clock.

Von Trapp children are Colleen Hewitt as Liesl, Nancy Carr as Louisa, John Martin as Kurt, Mary Ann Rice as Brigitta, Billy Carr as Wilhelm, Martha Slemmer as Gretl, and Rudy Chatlos as Friedrich.

Dave Copenhaver, Kenny Cool, and Roland Snyder assume the roles of Nazi officers in the production, and Sue Poulson is the postulant.

The All-City Dance Band from Frederick, under the direction of Gary Smith, will supply the musical accompaniment. Costumes have been supplied by the A. T. Jones Theatrical Co. Baltimore.

Lighting effects and sound effects have been supplied by the students themselves with very little adult assistance. The students have also built their own scenery with the exception of the staircase, which was built exclusively for this production by the Eric Glass Co., Taneytown, and is on

## Home Ec Open House Tuesday At College

The Home Economics Department at St. Joseph College has planned its Open House, to be held Tuesday, April 26, from 3 to 5 in the afternoon, around the theme "Open To Art." The program will highlight student demonstrations in food, fashion, and family management. As in past years, the public is cordially invited to attend.

At 3:45 p.m., a fashion show of student creations will be presented. Students will model their own costumes to the commentary of Jane Davis. The fashion show script has been prepared by Jane Fletcher and Kathy Skidmore. Various aspects of the fashion curriculum will be on display during the Open House.

Guided tours of the Home Ec House will be conducted by senior home ec majors. Demonstrations

loan to the senior class.

Miss Sue Sanders, of the Emmitsburg High School faculty, is the art supervisor and in charge of scenery and decorations. Mr. Robert Holmes, also of the High School faculty, is the director. Pianist and organist for the rehearsals during the production was Beverly Davis.

Tickets are 50c for students and \$1.00 for adults.

The seniors have concentrated their efforts this year in making this the highlight of their dramatic activity. The entire cast has put a great deal of time and effort into making this musical here in Emmitsburg the outstanding production that it has been on Broadway. They deserve the support of the Emmitsburg people to make it a success, and they assure us it will be a night filled with "The Sound of Music."

Curtain time is 7:30 p.m. tonight and tomorrow night.

in experimental foods, decorative machine stitching, silk screen processes, and weaving will be supplemented with film strips.

Students majoring in home economics head the Open House committees. Maureen Mullin is general chairman, with Elaine Long and GERALYN King as assistant chairmen. Mrs. Louise Brown and Monica Norris are co-chairmen of the decorations committee, and Mary Rosenberger heads the publicity committee. Refreshments will be prepared and served by the freshman meal-planning class under the direction of Judith Nilsson.

With Sister Madeleine, chairman of the home economics department, Sister Colette, Mrs. John Dillon, and Mrs. Charles Ecker, of the faculty, will also be present to greet visitors.

## Art Show Sunday

The Emmitsburg Public Library has made arrangements for an art exhibition on Sunday, April 24, from 2 to 4 p.m. in Saint Euphemia's Hall.

All art work from Grades 1 to 12 that was entered in the Children's Art Contest, will be on display. The winners will be announced and prizes will be awarded. The exhibition is open to the public.

## Local Man Injured

Kermit Lowe, 49, DePaul St., fell about 20 feet while at work on Wednesday morning at the Knouse Food Cooperative plant in Orrtanna, Pa. He was removed in the Gettysburg Fire Company ambulance to the Warner Hospital, Gettysburg, where he was admitted for observation and treatment of injuries.

Dr. John Dillon and Professor Bernard Kaliss will attend the annual meeting of the Maryland Council, Teachers of English, tomorrow at the University of Md.

# ROSE ANN'S 32nd ANNIVERSARY CELEBRATION

April 22 to May 7  
Ladies' Coats  
Toppers - Rainwear  
and  
All-Purpose Coats  
20% off

FREE PAIR Quaker Nylons  
With the Purchase of Any Dress  
at \$5.98 or More  
Petite - Junior  
Missie  
and Half Sizes  
Our Famous  
\$3.98  
House Dresses  
Celebration Special  
2 for \$7.00  
Sizes 12 to 20  
14 1/2 to 30 1/2

Dixie Belle  
Slips and Panties  
Especially Priced for  
This Celebration

10% off  
Entire Stock  
Ladies' Sweaters

10% DISCOUNT  
ON ENTIRE  
SHOE STOCK  
Whites Included

20% off  
Entire Stock  
Cinderella  
Frocks  
3 to 6; 7 to 14  
Chubbies 8 1/2 to 14 1/2

20% off  
Girls' Toppers  
and  
Rainwear

\$50.00  
Merchandise Awards  
7 Free Certificates  
3 \$10 Certificates  
4 \$5 Certificates

Shop and Save  
at

# ROSE ANN'S 32nd Anniversary Celebration

April 22 to May 7  
Remember You  
Always Do Better at

# THE ROSE ANN SHOPPE

38 York Street  
Gettysburg, Pa.

### Airman Transferred



Tech. Sergeant William C. MacKinzie, Jr., of Baltimore, has been

transferred to the Pacific Air Force in Southeastern Asia. Sgt. MacKinzie, who has thirteen years with the United States Air Force, is a supervisor mechanic on the famed F4C Phantom Jet Fighter, widely used in the aerial war over Vietnam.

Mrs. MacKinzie and children, Paul, Laurie, Joyce and Billy, are staying with her father, Paul Glass, near Emmitsburg, while her husband is overseas.

### OBITUARIES

#### MISS HELEN OGLE

Miss Helen L. Ogle, 66, 32 Oller Ave., Waynesboro, died Friday at the Waynesboro Hospital after a long illness. She was born in Thurmont, a daughter of the late Allen Grant and Fannie C. Martin Ogle.

She lived in Frederick County until 1905 when the family moved to Waynesboro. She was graduated from the Shenandoah Hospital School of Nursing in Roanoke, Va., in 1924. She was a school

nurse in Waynesboro for a year and then was superintendent of nurses at Washington County Hospital for a year.

She returned to Waynesboro and was supervisor at Waynesboro Hospital for 26 years and for the past 10 years had been employed by the Pennsylvania Dept. of Welfare at Hamburg.

She was a member of the Trinity United Church of Christ, of Waynesboro, Business and Professional Women's Club of Hamburg, Eastern Star of Waynesboro, and the American Nurses Assn. and its affiliations.

Surviving are one brother, George A. Ogle, Uniontown Ohio, and a number of nieces and nephews.

Funeral services were held Monday at 2 p.m. from the Grove Funeral Home, Waynesboro, with the Rev. Dr. Nevin Smith officiating. Interment was in Green Hill Cemetery, Waynesboro.

#### SISTER EMILY THOMAN

Sister Emily Thoman, 54, Sisters of Charity, a former nursing official at several Catholic Hospitals, died Tuesday at Villa St. Michael, where she was a patient for the last seven years.

A nurse in the order for 27 years, Sister Emily was formerly superintendent of nurses at Providence Hospital, Washington, D. C., and St. Vincent's Hospital, Jacksonville, Fla. She was also formerly in charge of the operating room at hospitals in Saginaw, Mich., and Rochester, N. Y.

Sister Emily was born in Baltimore to the late Henry A. and Pauline Thoman. He attended Seton High School and in 1934 graduated from St. Joseph College in Emmitsburg.

Entering the order a year later, Sister Emily first taught, then was trained by the order as a nurse. Her last assignment before entering Villa St. Michael was the DePaul Hospital, Norfolk, Va.

A requiem Mass for Sister Emily was offered Thursday morning at 9 o'clock at Villa St. Michael, Baltimore.

### Children's Choir Sings In Washington

The Children's Choir of Elias Lutheran Church traveled to the National Lutheran Home in Washington last Sunday where they toured the facilities of the Home and presented several anthems during the Evening Vesper Service. Mrs. William Koontz serves as Choir Director of the Children's Choir and Mrs. Donald Eyer is the organist. Pastor Fearer delivered the sermon for the evening in the recently-decorated Chapel. The group also visited with Miss Sarah Elizabeth Rowe, a member of Elias Church and a member of the Nursing Staff at the Lutheran Home. Miss Rowe also ate supper with the visiting group in the guest dining room prior to the Vesper Service.

Those going to Washington were: Dennis Adams, Peggy Long, Douglas Long, Teresa McNair, Mary Jayne Saylor, Deborah Leatherman, Robert Leatherman, Lois Meadows, David Harbaugh, Anne Umbel, James Small, Patty Eyer, Carol Eyer, Linda, Deborah, Cathy and John Gillespie, Michael Ollinger, James P. Saylor, Vickie Saylor, James A. Saylor, Frank Saylor, Carol Saylor, Bonnie Keilholtz, Mary Frances Gingell Barbara and Deborah Sanders, Valeria McCleaf and Choir Director, Mrs. William Koontz.

Others accompanying the Choir members were: Mr. and Mrs. Rodney McNair, Mr. and Mrs. Robert Saylor, Mr. and Mrs. Donald Eyer and Julie, Pastor and Mrs. W. Ronald Fearer and Daniel, Mrs. Charles Long, Mrs. Shirley Smith and Randy, Mr. George Glenn, Jr., Mrs. Donald Leatherman, Mrs. Edward Meadows, Mrs. Verna Harbaugh, Miss Beatrice Umble, Mrs. Chester Chapman, Mrs. Frank Shuff, Mrs. Richard Saylor, Mrs. Grace Saylor, Mrs. James Small Mrs. Nancy Gillespie and Treva, and the Misses Rocklyn and Betty Jane Koontz and Glenda McGlaughlin. Mr. Charles Long served as driver of the bus which took the group to Washington.

### Seminarians To Study At Lutheran Church

Four students from the Lutheran Theological Seminary in Gettysburg have begun a five-week period of study and observation at Elias Lutheran Church under the supervision of Pastor Ronald Fearer. The first year students have been spending this first year of their Seminary work in various churches observing the Worship Services and related areas. Earlier in the year, the group spent five weeks in a city congregation and more recently were observers in a suburban parish. Their last assignment, here at Elias Church, is to enable them to see a small town congregation at work within the parish.

The following are names of the Seminarians who will be at Elias Church: Thomas Llewellyn Myers, of Loch Haven, Pa. Mr. Myers received his Bachelor of Arts degree from Susquehanna University. Mr. R. Rollin Lower, is a native of Ellwood City, Pa. and graduated from Youngstown University with a Bachelor of Arts degree. Charles Samuel Miller,

Jr., graduated from Gettysburg College and lives at Clearfield, Pa. Ronald Clauser Long is a resident of Darby, Pa., and majored in Sociology at Muhlenberg College.

### STANLEY WARNER MAJESTIC GETTYSBURG ED 4-2513

ENDS TUE. April 26  
Nominated for 5 Academy Awards  
Best Supporting Role  
SHELLEY WINTERS

ELIZABETH SHELLEY  
HARTMAN WINTERS  
"A PATCH OF BLUE"  
With  
SIDNEY POITIER

Wed.-Sat. April 27-30  
LEE MARVIN  
(Best Actor)  
In  
"CAT BALLOU"In Color  
-ALSO-  
JULIE CHRISTIE  
(Best Actress)  
In  
"DARLING"-COMING SOON-  
"The Pawn Broker"  
"Zorba The Greek"  
A Double Feature  
"Spy With My Face"  
"To Trap A Spy"  
(U.N.C.L.E.)  
"Singing Nun"  
"Harper"

ADMINISTRATRIX'S NOTICE  
This is to give notice that the subscriber has obtained from the Orphans' Court of Frederick County, in Maryland, letters of Administration on the estate of PETER DONALD HERRING late of Frederick County, Maryland, Deceased. All persons having claims against the deceased are warned to exhibit the same, with the vouchers thereof, legally authenticated, to the subscriber, on or before the 4th day of October, 1966 next; they may otherwise by law be excluded from all benefit of said estate. Those indebted to the deceased are desired to make immediate payment.  
Given under my hand this 28th days of March, 1966.  
LULA A. HERRING  
Administratrix  
FREDERICK J. BOWER  
Attorney  
True Copy—Test:  
THOMAS M. EICHELBERGER  
Register of Wills for Frederick County, Md. 4/15/66

### LEGAL

EXECUTORS' NOTICE  
This is to give notice that the subscribers have obtained from the Orphans' Court of Frederick County, in Maryland, letters Testimentary on the estate of MAY S. KEFAUVER late of Frederick County, Maryland, Deceased. All persons having claims against the deceased are warned to exhibit the same, with the vouchers thereof, legally authenticated, to the subscribers, on or before the 11th day of October, 1966 next; they may otherwise by law be excluded from all benefit of said estate. Those indebted to the deceased are desired to make immediate payment.  
Given under our hands this 4th day of April, 1966.  
IRVING S. KEFAUVER & EDNA E. C. KEFAUVER  
Executors  
True Copy — Test:  
THOMAS M. EICHELBERGER  
Register of Wills for Frederick County, Md. 4/8/66

### Musical Planned

Tickets are now available for the production of Rodgers and Hammerstein's "Sound of Music," and "South Pacific." They are being sold by the members of Saint Joseph's High School Glee Club and may also be purchased at the door. "An Evening on Broadway," will be presented May 1, at 7:30 p.m., in the high school auditorium. In addition to St. Joseph's High School Glee Club, the Mount St. Mary's College Glee Club will appear as guest singers. Both groups are under the direction of Rev. David W. Shaum.

Sister M. Clare serves as Moderator of the high school glee club.

### Hospital Report

Discharged  
Gregory E. Rosensteel, Emmitsburg R.I.  
Edward E. Pryor, Emmitsburg.  
Ralph L. Hatter, Emmitsburg.

### Births

Mr. and Mrs. Clarence R. Orndore, Emmitsburg, son, Friday.

To ensure the future availability of nickel, the world's principal producer of the metal, the International Nickel Company, spends \$10 million annually on worldwide exploration for new mines.

### SOUTHERN STATES Lawn Mower Sale

SALE PRICED IN BOXES

20" ROTARY MOWER	\$ 40.89
24" RIDING MOWER	\$116.49
20" ROTARY TILLER	\$ 99.95

—MANY OTHER BARGAINS—

### EMMITSBURG FEED & FARM SUPPLY

Emmitsburg Md.

### Unicap Chewable

MULTIVITAMINS Upjohn

## FREE OFFER!

24 FREE WHEN YOU BUY 100

Orange-flavored Unicap Chewables contain nine essential vitamins growing children need. Buy now and save!

\$3.11

### EMMITSBURG PHARMACY

Paul M. Carter, Pharmacist  
W. Main Street Emmitsburg, Md.

### Announcing... THE ALL NEW Performance Proven Delta

## DELTA

SUPER PREMIUM HIGH PERFORMANCE Full 4-Ply NYLON TIRES

- ★ NEW CONTINENTAL WRAPAROUND DESIGN!
- ★ DESIGNED, TESTED AND PERFORMANCE PROVEN FOR MAXIMUM MILEAGE!
- ★ SOLD WITH A LIFETIME GUARANTEE!

THE PREMIUM TIRE THAT SELLS FOR LESS THAN PREMIUM PRICES!

Premium Grade tires for less than the price of 1st grade  
Special Introductory Price  
ONLY ONE-HALF OF LIST PRICE  
Quality-tire-S-ervice

East Main Street Emmitsburg, Md.

### Dian Of Dian's Beauty Shop

Welcomes You To A Wig Show, Tuesday, April 26, 8:30 P.M., at the VFW Annex in Emmitsburg.

Wigs by the "Chick-'n-Dee Salon", Hanover.

### NOW IS THE TIME TO THINK ABOUT YOUR LAWN AND GARDEN

We Have All Kinds of QUALITY SEEDS

- Vermiculite
- Michigan Peat
- Sylvan Shred
- Coco Mulch
- Cow Manure
- Sheep Manure
- Plant Food
- Lawn Food
- Gladiolus Bulbs
- Power Mowers
- Reel and Rotary
- Tillers
- Rollers
- Spreaders
- Sprayers
- Plants
- Grass Seed
- Garden Tools
- Sprayers-Dusts

### Trade Allowance on Old Mowers

## GETTYSBURG HARDWARE

Paints - Housewares - Lawn Supplies  
Baltimore Street in Gettysburg, Pa.

# SAVE

With SAFETY!

# SAVE

REGULARLY

at the

## EMMITSBURG OFFICE

### FARMERS AND MECHANICS NATIONAL BANK

Member of the Federal Deposit Insurance Corp.  
The Federal Reserve System  
and the Association of Military Banks

# WE APOLOGIZE!

To all our friends and customers for the inconvenience of not being large enough to accommodate all of you on Sunday, April 17.

We hope to have the remodeling and enlarging completed very soon. Please bear with us and come back to see us.

Thank you for your patience and understanding during this period.

## The Emmitt House

Restaurant and Motel  
Emmitsburg, Maryland George Groh, Manager

### Looking Ahead

By Dr. George S. Benson  
PRESIDENT-NATIONAL  
EDUCATION PROGRAM  
Searcy, Arkansas

Deficits Are Dangerous  
The "New Economics" which

constitutes the basis for present Federal government economic policy is a radical doctrine. It breaks with economic laws that have stood the test of time. It pushes in the direction of totalitarian government. It has a distinctive Marxian flavor. And its chief sponsors within the government and in the academic community either have fooled themselves or they are seeking

to fool the American people.

If Americans are going to be saddled with something so drastic, they should be told the truth about it. The "New Economics" will not safeguard capitalism, as is claimed. If its doctrines continue to grow in favor in Washington, capitalism, whose measure of prosperity has made America the envy of the world's people, ultimately will be destroyed. Lord John Maynard Keynes, the Englishman who propounded the theory upon which the "New Economics" is based, condemned capitalism with carefully worded faint praise, and then devoted 99 per cent of his textbook to proposing a mechanism of centralized control which would choke the bloodstream and smother the dynamism of capitalism—and our personal freedom.

#### Away From Logis

Lord Keynes projected the following central ideas—none of which have yet been proved.

1. Thrift is harmful to the general well-being. He said money that individual families would like to save ("put away for a rainy day") must be channeled into a constantly rising purchasing power—under the control of those who would administer the nation's economy from the White House or the Treasury Department.

2. Deficit spending could be made a permanent activity of the Federal government. He emphasized its benefits as a depression cure, but his disciples apparently have extended the idea to make "controlled" deficit financing and "controlled" inflation a permanent requirement. One disciple has written, "Once you have begun deficit financing, you need only the courage to continue it."

3. Unemployment could be eliminated by a redistribution of wealth, plus continuing government manipulation of the wage-cost-price equation to achieve a constantly rising purchasing power.

#### Thrift Challenged

Since these postulates are at the very heart of Keynesianism, let's briefly examine them.

1. The habit of thrift is bad for a country, say the Keynesians. This isn't true in a capitalist nation. In capitalism, the savings of people—in banks, insurance companies, savings and loan associations, in common stocks, etc.—supply the capital for the expansion of business and industry from which all genuine wealth must come. Wealth is created only when a natural resource is processed into something—goods or services—which people will buy.

2. Deficit spending, to the Keynesians, is just wonderful. They are not worried about the size of the national debt (now \$320,000,000,000) because with control of the economy in the "right" hands, steady inflation will produce so many watered-down dollars that the debt someday can be reduced. But what about the people with fixed incomes, savings accounts, pensions, and insurance policies; and what about the nation's financial stability with our currency eroding and our debt rising?

#### Primrose Path

3. "Full employment" can be achieved by a redistribution of wealth, say the "New" economists. You get some of the rich man's money, and the poor family "down by the tracks" gets some of yours. No new wealth has been created. In order for an individual or a government to take property (money) from one person and give it to another, a new concept of morality is required—or the basic principle of private ownership must be thrown overboard. Karl Marx wrote in the Communist Manifesto: "Communism . . . is the abolition of private property."

Our examination of these three postulates of the "New Economics" has been brief because of space limitation. But the essence of our fear has a solid foundation. The "New Economics" proposes a drastic break with tradition and, we think, with common sense too. Talk to your neighbors about deficit spending and the attack upon thrift. Informed citizens can help safeguard capitalism; and they must, for it is a part of the superstructure of our freedom and economic well-being.

During World War II the largest number of men training at Parris Island Marine Corps Recruit Depot at one time was 13,286.

### TODAY'S Meditation

from  
The World's Most Widely Used  
Devotional Guide



The Upper Room  
© THE UPPER ROOM, NASHVILLE, TENNESSEE

Read John 6:63-69.

We believe and are sure that thou art that Christ, the Son of the living God. (John 6:69)

Those who knew Col. David Carnegie, a respected citizen of our land, considered him a man of sterling character. In a press report after David Carnegie's death, the general manager of the great business in which David was his deputy summed up the real secret of David's life. He said: "No one believed more firmly that this is God's world to be enjoyed to the utmost. David's belief in the Gospels and in the Hereafter was staunch and true."

In other words, David Carnegie was sustained by his unshakable faith in Christ and in the life eternal. These are the main beliefs of the Christian. We, who are God's creatures, cannot but believe in Him who gave His Son to die for us. That Christ should have suffered and died for our sins fills us with humble amazement.

The Christian gives first place to a firm belief in the redeeming power of Christ's sacrifice. Life becomes spiritually rewarding as he meditates daily on the wonderful love of Jesus, the Son of God. Prayer

We thank Thee, dear Father, for believers who served Thee on earth and are now inheriting Thy promises. Grant to us also the joy and peace they experienced in believing. In His name we pray. Amen.

#### Thought For The Day

I believe in God—I can do no other.

Thomas Watson (Scotland)  
Copyright—The Upper Room

### SPORTS AFIELD

By Ted Kesting

The exact spot where you pitch your tent should be well drained. Usually you ensure this by picking a site that is relatively high. Never make camp in a low, damp area. Clayey soil should be avoided if possible, for during a rain the mud is formidable. Ask yourself, if it rains (and chances are it will), where will the water run? Away from the tent, or toward it? It is not always necessary to

have the campsite comparatively high. Beaches, for instance, are often excellent, because, being sandy, they drain fast.

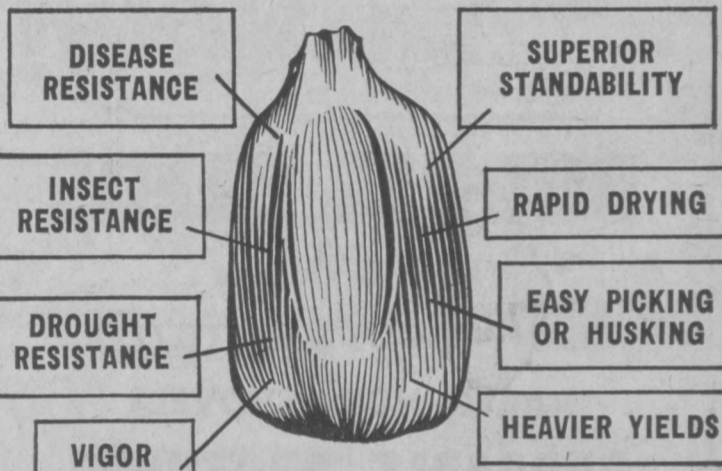
If it is humanly possible, make the tent site as level as a billiard table, even if you have to work a reasonable amount with your camp shovel or spade. Remove roots and stones—which may not appear large at first, but have a dreadful habit of magically growing in size and being a confounded nuisance beneath the tent. "Under no circumstances ever make camp in a dry stream bed, or ravine or coulee—a cloudburst many miles away could cost your life," warns John Jobson, Camping Editor of Sports Afield Magazine. Stay away from dense vegetation. Lush growth immediately adjacent to tents harbors insects, reptiles and such. Try to be out in the open—if you can. It is better not to camp directly under a large tree, particularly one much taller than its neighbors. That could attract lightning. And rain may interminably drip from a tree until it gets a trifle maddening. Branches can

fall, and in a high wind trees can topple, for that matter. Camping too near cliffs or steep embankments should be avoided (falling rocks and earth).

It is better, in most cases (in spite of pretty calendar pictures to the contrary), not to locate smack at water's edge. Just one of the reasons for this is that water is attractive to various kinds of obnoxious insects. One example of an exception is a long point of land out in a lake where the breeze blows constantly—but make certain your tent is well above the highest high-water mark. Avoid knee-high grass, suspicious undergrowth (poison plants) and all thick underbrush.

What would you do if you discovered fire in your home right now? The National Fire Protection Association says: Plan ahead for fire emergencies. Make sure you—and your family—know two ways out of every room. Remember, the first rule in case of fire is to get everybody out of the house—fast.

### HIDDEN VALUES IN Southern States HYBRIDS



Don't judge a kernel of corn by its looks. The Hidden Values which have been bred into the kernel are the things that really count.

Use Southern States Hybrids . . . They "Pay Off" at Harvest Time.

Emmitsburg Feed & Farm Supply  
Phone HI 7-3612 Emmitsburg, Md.  
Ralph D. Lindsey, Prop.

Your Southern States Cooperative Agency

### COMMUNITY HEALTH FORUM



Dr. James Q. Simmons, Jr., director of medical programs of the National Multiple Sclerosis Society, answers your questions on multiple sclerosis.

Q What is known about multiple sclerosis?

A Multiple sclerosis is a disabling disease of the central nervous system. Called the great crippler of young adults, it attacks the substance which sheathes nerve fibers causing nerve messages controlling movement, vision, speech and balance to be distorted, often blocked.

Q Whom does MS strike?

A MS strikes most often at young adults in the 20 to 40 age range, during the years when they should be most vital, most productive. An estimated 500,000 Americans suffer from MS and related diseases.

Q Does MS lead to total physical disability?

A Though MS can be progressive, often leading to total disability, with proper medical supervision, most MS patients continue to be active, vital people.

Q Is there a cure for MS at the present time?

A There is no specific known medical management which alters the natural unpredictable course of the disease which is one of worsening, followed by periods of improvement achieving a plateau where no change takes place. The National Multiple Sclerosis Society recommends good general medical care devoted to the prevention of intercurrent infectious illness and directed toward the control of the more distressing symptoms as they appear.

A Public Service of Publications Advertising

### Plant Seeds To Beautify America



Following the lead of our first lady, Mrs. Lyndon B. Johnson, who has said that beautifying America begins at home, National Garden Bureau's new slide program shows first a number of homes that have been made lovely by their owners. This is one of them. For details read the accompanying article.

In line with the beautification program sponsored by President Lyndon B. Johnson, National Garden Bureau, the educational service of the garden seed industry, offers a new program, "Plant Seeds To Make America Beautiful."

This is a collection of 35mm kodachrome slides showing how people in their homes, places of business and communities have used annual flowers to enhance the landscape. It is sent, complete with script, to any organization, for the price of postage and insurance both ways.

"Newest Flower Fashions," a 35mm kodachrome slide presentation of new flowers, including the 1966 All-America Selections winners, now is available in a 1966 edition. It, too, has a script to complete it.

Other current slide (with script) programs are "See What Seeds Can Do For You," "First Steps In Arranging Annual Flowers" and

"Ideas For Making Your Garden Gay." There are also two current quiz programs: "Show Off Your Knowledge of Annual Flowers" and "Mix 'N Match Vegetables and Their Flowers." A certificate for seeds and seed prizes are awarded to the three highest winners each time one of these quiz programs is used.

Organizations which have borrowed National Garden Bureau programs during the past year include garden clubs, senior and junior, women's and mens, 4-H Clubs, Girl Scouts and Camp Fire Girls, horticultural societies and county agents, libraries, church flower guilds; Lion, Kiwanis and Rotary luncheon groups and many types of community organizations.

All programs are shipped on loan, the group borrowing a program paying only for postage and insurance both ways. If your group is interested, write for a request form to National Garden Bureau, 708 W. Long Lake Rd., Bloomfield Hills, Mich, 48013.

Give to fight

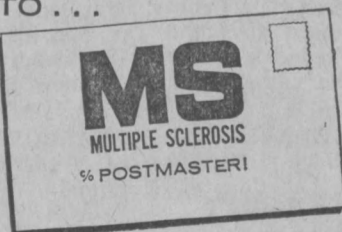
# MS

MULTIPLE SCLEROSIS



the great  
crippler of  
young adults

SEND GIFT TO . . .



TODAY!

### THE BIG SWITCH IN '66

- IS TO -



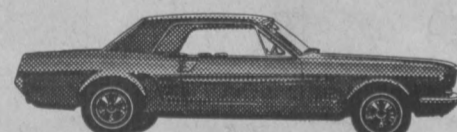
LET US GIVE YOUR CAR THAT SPRING CARE THAT IS SO IMPORTANT TO LONGER LIFE AT LESS COST

# Firestone

## DUDASH'S 66 SERVICE

TOLL GATE HILL Phone 447-2461 EMMITSBURG, MD.

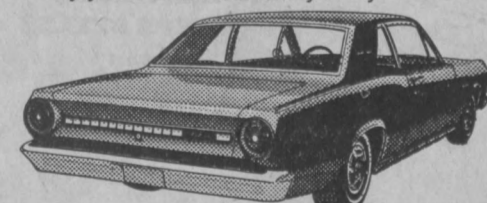
### Million dollar deals all during Millionth Mustang Month!



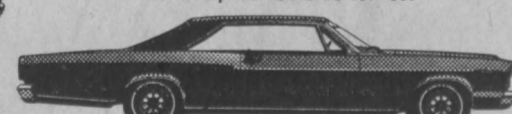
1. America's No. 1 fun car—Mustang '66. Enjoy its bucket-seat luxury today.



3. A sizzling performer with charm and comfort to spare. Galaxie for '66.



2. Big buy in the compact field—Falcon, now in its third million.



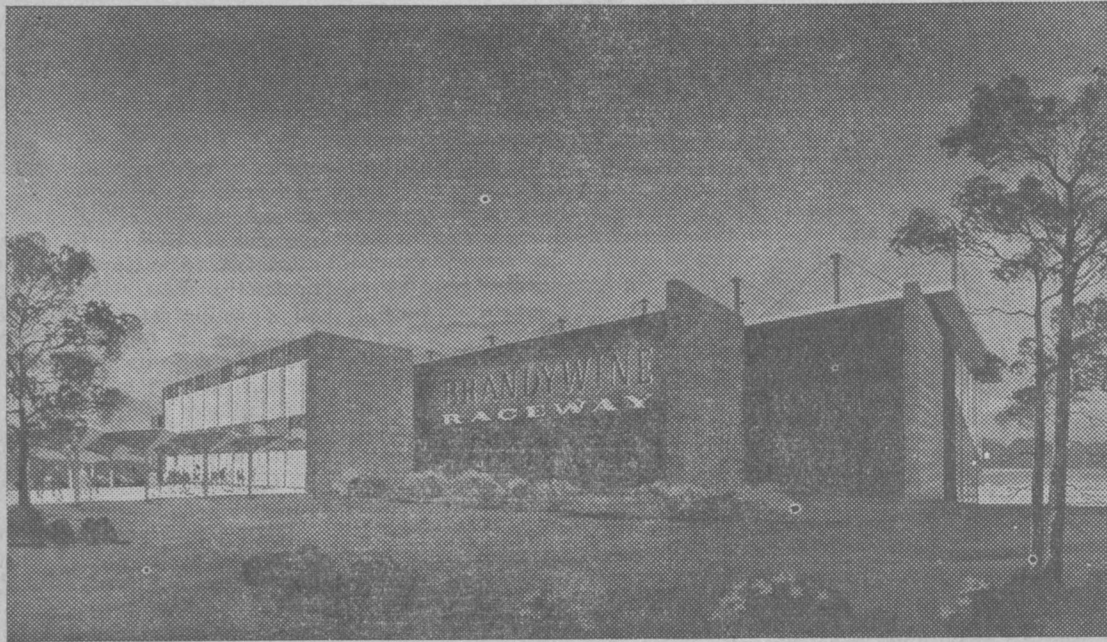
4. Here's hardtop heaven! Quiet quality and sound savings. Ford '66!

YOU'RE AHEAD ALL THE WAY AT YOUR FORD DEALER'S!

## SPERRY FORD SALES

South Seton Avenue

Emmitsburg, Md.



FUTURE LOOK AT BRANDY-WINE — Architect's rendering shows ultra-modern Clubhouse to be built at Brandywine Raceway, Wilmington, Del., at a cost of \$3,000,000. Construction will begin following the September 9 closing of the 1966 meet, and the luxur-

ious new facility will be ready for the 1967 season. Designed by well-known Architect Lionel K. Levy, of New York City, the all seasons Clubhouse, heated and air-conditioned throughout, will have dining accommodations for more than 1,000 patrons and viewing

room for 10,000. The spacious structure will provide a series of tiers for dining and for viewing, a separate mexican dining room, two levels for wagering, and escalator and elevator service. Brandywines' meet opens next Monday, April 25.

is persistent, severe vomiting — call a doctor at once. **Doctors Reduce Abortion Rate** British physician Dr. Aviva Wiseman, who heads one of her nation's largest family planning clinics at Slough, England, told a recent meeting of the Canadian College of General Practice that oral contraceptives have significantly reduced the number of abortions in England and Australia.

The doctor told of a colleague who practices in South London where "unwanted pregnancies and abortions were high." In an effort to reduce unwanted pregnancies and abortions, the physician began to prescribe "the pill" for women who had had abortions or who might seek one if they became pregnant again. "Now in a sort of 'Abortions Anonymous' sisterhood," said Dr. Wiseman, "other women request 'the pill' and septic abortion has been virtually wiped out in this practice."

In two hospitals in Sydney, Australia, the number of septic abortions fell from 452 in 1960 to 138 in 1964 as a result of the introduction of "the pill," Dr. Wiseman reported.

**Special Vitamins Cut Tooth Decay** Families living in communities that do not have a fluoridated water supply may now protect their children's teeth by giving the youngsters daily doses of a vitamin-fluoride combination. This is the good news reported by three Indiana University School of Dentistry scientists who studied the effect of the new combination on 218 children who took it for three years. These were compared to an equal number who took the vitamin alone, with the fluoride, and here is what the doctors

found: In the first group there was a reduction in dental caries (decay) of 63 per cent in first teeth, and of 43 per cent in permanent teeth.

The doctors wrote in a recent issue of the Journal of Dentistry for Children that the fluoride-vitamins "appear to provide an effective and practical method of supplying fluoride."

The U. S. Public Health Service estimates that almost 65 per cent of the population live either outside central water supplies or in communities that do not fluoridate their water.

The maximum benefit from this method of getting fluorides is derived when it is given from birth through eight or ten years of age, the doctors noted. However, there was a noticeable reduction in decay in first teeth after only 16 months of use, and in permanent teeth after 28 months.

**MOBILHEAT**  
with RT-98  
the fuel oil for easy heating!  
Mobil  
AUTOMATIC DELIVERY  
**LEWIS E. HAHN**  
Thurmont — Maryland  
Phone 271-2512

**OPPORTUNITIES UNLIMITED!**  
A CHALLENGE TO BOTH IN INDUSTRY  
GRADUATE WITH SOCIAL INTERESTS  
GRADUATE WITH TECHNICAL INTERESTS

**WOMEN'S HEALTH**  
By Elizabeth Stewart  
Women's Medical News Service  
When To Call A Doctor  
Most of us are faced with the vexing problem, from time to time, of whether to call a doctor. The American Medical Association (AMA) offers some clues that may be of help in deciding:  
If the sick person is suffering acute persistent pain the doctor should be called at once.  
When a minor symptom persists for more than a few days, and does not seem to be due to some readily identifiable cause, a call to the doctor is in order. The AMA notes, "A nose bleed from a sharp blow is one thing; a nose that bleeds constantly or frequently for no apparent reason is quite a different matter."  
When a symptom recurs repeatedly for no readily apparent cause, a visit to the doctor is recommended.  
When the victim of an accident falls unconscious, or when bleeding is severe, or when there are signs of shock, or when there

green thumbs go into action **NOW!**  
**BURPEE SEEDS**  
Lawn & Garden  
PLANT FOODS & FERTILIZER  
RAKES, HOES, SHOVELS  
**ZURGABLE BROTHERS**  
FEED & FARM SUPPLIES  
PHONE 447-5051 EMMITSBURG, MD.

**LEGAL**  
**NO. 21,281 EQUITY IN THE CIRCUIT COURT FOR FREDERICK COUNTY, MARYLAND, IN EQUITY**  
CHARLES H. KEHNE  
Buckeystown, Maryland  
VS.  
ETHEL STULL GILBERT  
Mountandale, Maryland  
BELVA STULL BAUGHER  
Mountandale, Maryland  
WOODROW STULL  
Mountandale, Maryland  
MELVIN STULL  
Mountandale, Maryland  
LILLIAN STULL EYLER  
Frederick, Maryland  
HELEN STULL  
Frederick, Maryland  
RUTH STULL FOGLE  
Daysville, Maryland  
EMORY STULL  
New Market, Maryland  
LOLA STULL NUSBAUM  
Bartonsville, Maryland  
SHERMAN STULL  
Mountandale, Maryland  
MARIE STULL ALTMAN  
East Church Street  
Frederick, Maryland  
ELLEN STULL HUFFER  
Walkersville, Maryland  
FLOYD STULL  
Lewistown, Maryland  
MARGARETTE STULL  
Lewistown, Maryland  
ESTELLA STULL YOST  
Berkeley Springs, West Virginia  
PAUL STULL  
Berkeley Springs West Virginia  
CLETTA STULL BLUM  
Walkersville, Maryland  
LILLIAN STULL  
Walkersville, Maryland  
CARRIE STULL DRIVER  
Laurel, Maryland  
OSCAR KEYSER  
Frederick, Maryland  
AVA KEYSER MARTZ  
Westminster, Maryland  
BRADON KEYSER  
Westminster, Maryland  
MARY KEYSER CLEM  
Frederick, Maryland  
GRACE KEYSER CLEM  
Frederick, Maryland  
WALTER KEYSER  
Lewistown, Maryland  
BESSIE KEYSER STULL  
Thurmont, Maryland  
BLANCHE KEYSER KLIPP  
Mountandale, Maryland  
OLLIE KEYSER BURDETT  
Urbana, Maryland  
LOUISE KEYSER JACOBS  
E 9th Street  
Frederick, Maryland  
MONROE STULL  
R.F.D. #3  
Frederick, Maryland  
HAROLD STULL  
R.F.D. #5  
Frederick, Maryland  
CLEON STULL, SR.  
R.F.D. #6  
Frederick, Maryland  
MARION STULL  
Route #1  
Legore, Maryland  
MARY KEYSER  
300 Thomas Avenue  
Frederick, Maryland  
RESLEY STULL  
R.F.D. #3  
Frederick, Maryland  
AND  
all persons having or claiming to have any interest in the property being twenty-nine wooded acres, more or less, unimproved, located in the Tuscarora Election District, Frederick County, Maryland, assessed upon the Tax Records of Frederick County, Maryland, in the name of Mrs. William Stull  
AND  
CHARLOTTE W. YARROLL  
County Treasurer of Frederick County, Maryland

**ORDER OF PUBLICATION**  
The object of this proceeding is to foreclose all rights of redemption of the respondents in and to certain unimproved property assessed to Mrs. William Stull in the Tuscarora Election District, Frederick County, Maryland, and being known and designated as twenty-nine wooded acres, more or less, unimproved. The Bill states in substance that Charlotte W. Yarroll, County Treasurer for Frederick County, State of Maryland, offered at public auction the real estate assessed to the aforesaid Mrs. William Stull, in the Tuscarora Election District, Frederick County, Maryland, as aforesaid, and that said real estate is now vested in the heirs of the said Mrs. William Stull, said heirs being Ethel Stull Gilbert, Belva Stull Baugher, Woodrow Stull, Melvin Stull, Lillian Stull Eyler, Helen Stull, Ruth Stull Fogle, Emory Stull, Lola Stull Nusbaum, Sherman Stull, Marie Stull Altman, Ellen Stull Huffer, Floyd Stull, Margarette Stull, Estella Stull Yost, Paul Stull, Cletta Stull Blum, Lillian Stull, Carrie Stull Driver, Oscar Keyser, Ava Keyser Martz, Bradon Keyser, Mary Keyser Clem, Grace Keyser Clem, Walter Keyser, Bessie Keyser Stull, Blanche Keyser Klipp, Ollie Keyser Burdett, Louise Keyser Jacobs, Monroe Stull, Harold Stull, Cleon Stull, Sr., Marion Stull, Mary Keyser, Resley Stull, and any other persons or persons having or claiming interest in said property. That said sale was held in April 13, 1964, and that the purchaser was Charles H. Kehne, at and for the sum of Two Thousand Seven Hundred Fifty Dollars (\$2,750.00). That the sale was made in satisfaction of unpaid taxes due and owing the State of Maryland and Frederick County for the year 1963. That the purchaser paid the sum of Twenty-two Dollars and Fourteen Cents (\$22.14) towards the purchase of said parcel of real estate; that the taxes, interest and costs, necessary to redeem the property have not been paid and the property not redeemed although one year and one day from the date of said sale has vassed, and that a Final Decree is prayed foreclosing all rights of redemption of the respondents in and to the said property assessed to the said Mrs. William Stull.  
It is thertupon, this 14th day of April, 1966, by the Circuit Court for Frederick County, Maryland, sitting as a Court of Equity, and by the authority thereof, ORDERED that the Complainant, by causing a copy of this Order of Publication to be published for at least four successive weeks prior to the 21st day of May, 1966, in some newspaper published in Frederick County, Maryland, giving notice to any non-resident respondent, known or unknown, and to all other persons having or claiming to have any interest in the property, of the object and substance of this Bill of Complaint, and warning them to be and appear in this Court, either in person or by Solicitor, on or before the 24th day of June, 1966, to show cause if any they have, why the relief sought should not be granted.  
Patrick M. Schnauffer  
Judge  
Filed April 14, 1966  
Wallace E. Hutton  
7 East Church Street,  
Frederick, Md.,  
Solicitor for Complainant  
TRUE COPY TEST  
Ellis C. Wachter, Clerk  
4/22/66

**REAVES ELECTRIC**  
GIBSON REFRIGERATORS & FREEZERS  
EASY WASHERS & DRYERS  
TAPPAN ELECTRIC RANGES  
HARDWICK GAS RANGES  
SUNBEAM APPLIANCES  
ELECTRICAL CONTRACTOR: Flameless Electric Heating, Certified Wiring, Residential, Commercial  
402 W. MAIN ST. - Phone 447-2497 - EMMITSBURG

**CALL OUR Order Department**  
Toll Free From Hillcrest Exchange  
ASK OPERATOR FOR ENTERprise 9-3794  
**THE CAVETOWN PLANING MILL CO.**  
Cavetown, Md.

**NOW AT POPULAR PRICES!**  
ORIGINAL Pabst Blue Ribbon BEER  
T.M. Reg. U.S. Pat. Off. Pabst Brewing Company, Milwaukee, Peoria Heights, Newark, Los Angeles

**TOPS in USED CAR VALUE**  
A-1  
1965 Mustang 2-Dr. H.T.; Std. Shift; R&H; Very Clean.  
1964 Fairlane 500 4-Dr.; Std. Shift; R&H.  
1964 Falcon 2-Dr.; R&H; 6 Cyl.; 1 Owner  
1963 Ford 2-Dr.; Overdrive; R&H.  
1963 Rambler Wagon, 4-Dr.; 6 Cyl.  
1962 Fairlane 500 2-Dr.; Like New; Low Mileage.  
1962 Fairlane 500 4-Dr.; Fully Equipped.  
1962 Ford Convertible, V-8; Fully Equipped; Clean.  
1962 Ford Galaxie 2-Dr. H.T.; Fully Equipped; Extra Clean.  
1962 Corvair 4-Dr. Sta. Wagon; Extra Clean; Like New.  
1962 Falcon 2-Dr.; R&H.  
1961 Ford Galaxie 2-Dr. Hardtop, V-8; Automatic.  
1961 Ford 4-Dr., 6 Cyl.; R&H; Very Clean.  
1960 Falcon 4-Dr.; Std. Shift; R&H.  
1960 Pontiac Convertible; Fully Equipped; Very Clean.  
1960 Ford 4-Dr.; Std. Shift; R&H.  
1960 Ford 4-Dr. V-8; Automatic; R&H; 1 Local Owner.  
1961 Chevrolet Panel, 1/2-Ton; New Paint.  
1955 Ford Panel, V-8, R&H.  
1954 Ford Pickup, 1/2-Ton; Good Motor & Tires; New Paint.  
**Sperry Ford Sales**  
PHONE 447-5131 EMMITSBURG, MD.

**WEDDING INVITATIONS**  
and announcements...  
... created by REGENCY  
Each distinctive invitation thermographed on 25% rag china-white vellum paper, giving you fine raised lettering that speaks of the highest quality.  
Your choice of SIXTEEN individual TYPE STYLES  
The most popular selections shown below  
Also matching reception cards, response cards, thank you cards, at home cards and informals. Come in today and make your choice from our "Flower Wedding Line" catalog.  
**CHRONICLE PRESS INCORPORATED**  
Phone Hillcrest 7-5511 Emmitsburg, Md.

**Your Personal Health**

**Headache**  
Headache is one of the most common complaints of 20th century man.

Headache is not a disease by itself but rather a symptom of a disease or a functional disturbance, says Today's Health Guide, the American Medical Association's manual of health information for the American family. Thanks to recent research, the

diagnosis of a headache has become more exact and its treatment more certain than ever before.

Tension headaches and headaches of emotional origin are extremely common. They occur in normal persons as well as those afflicted by emotional problems. In many instances, the emotional difficulty is unknown. The chronic wear-and-tear of everyday living is enough to tax a person and produce his headache.

Headache victims with emotional problems are best treated in the doctor's office. One of his main tasks is to understand the origin and development of the complaint in relation to the patient's work, social position and family attachments. Patients who can be given insight into their own reactions to daily living can be shown how to reduce or avoid tensions.

In contrast to headaches of emotional origin, a headache can warn that something is fundamentally wrong with the brain. No chronic headache should be dismissed without investigating the possibility of its having a serious cause.

Headaches due to eyestrain can be corrected by proper glasses. Each case of migraine headache has to be studied by a physician to determine its underlying cause.

Diseases of the nerves leading to the head and face, as well as infections of the ear, nose, throat and sinuses, can also cause headaches. In addition, some headaches are caused by such diseases as influenza, pneumonia and measles.

Prolonged self-treatment of headache with pills or powders available in every drug store is unwise. The pill may mask symptoms of a more serious disease.

**Darn That Dog**

A man from Scotts, the lawn people tells me that the vast majority of all so-called "brown spots" are caused by dogs. And apart from training Fido to go behind the bushes, there really isn't any effective preventative or cure. Instead of trying to reseed an unsightly brown spot, replace it with a plug of good sod from the edge of the lawn.

**Fuel Oil Damage**

The grass around a fuel oil intake pipe is soon killed by spill-

age. Before replanting, dig out all saturated soil and replace. And if the oil man won't mend his ways, put a 8-12" circle of loose stones or sand around the pipe to catch the drippings.

**Defeating Crabgrass**

There are two ways. Whichever you use, use it at the right time. You can put down a pre-emergence control such as Halts or Turf Builder Plus 4 anytime until roses bloom. Otherwise wait until the crabgrass plants are developed and then eradicate them with a specific such as Clout.

**GI Insurance Deadline Near**

Less than two weeks remain for World War II and Korean Conflict veterans with service-connected disabilities to renew lapsed GI insurance policies, Rufus H. Wilson, Manager of the Baltimore Veterans Administration Regional Office, said this week.

The law which allows these veterans to replace all or part of the GI insurance which had lapsed or which they failed to purchase during wartime duty will expire at midnight, May 2, 1966.

The application for the payment for the new GI insurance must be received by the VA by May 2, or must bear a postmark before midnight May 2, to be acceptable.

Even though the veteran's service-connected disability has been rated at zero per cent and carries no monthly compensation payment, he may still be eligible for one of the new GI insurance policies, Mr. Wilson said.

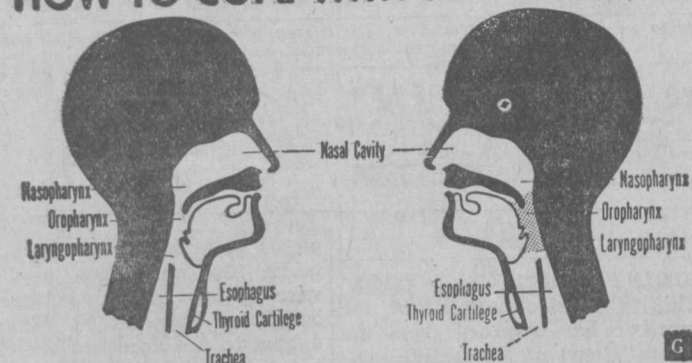
There are several choices of insurance plans: ordinary life, 20-payment life, 20-year endowment and modified life.

Eligible veterans may apply for full \$10,000 coverage or for any part of that figure to bring their total GI insurance up to \$10,000. Or they may take out as little as \$1,000 if they wish.

Premium rates and full information may be obtained at any Regional Office.

The black silk neckerchief worn about a sailor's neck commemorates the death of Lord Nelson, an early leader in the U. S. Navy.

**HOW TO COPE WITH SORE THROAT**



IN THESE SIMPLIFIED DRAWINGS, A NORMAL THROAT IS SHOWN AT LEFT, WHILE THE IRRITATED AREA IN A SORE THROAT IS SHOWN AT THE RIGHT.

The sore throat is the second most common affliction after the common cold -- which it often accompanies. It can be caused by many things year 'round: excessive smoking, chronic fatigue, irritation from dry air -- and, of course, various diseases -- to name just a few.

Here is a five point program which you can use to treat a minor sore throat. But, the emphasis is on minor. If your sore throat lasts more than 2 days, or if it is accompanied by a high fever or other complications, you must see your physician. A sore throat is often a warning sign for a more serious -- perhaps life endangering -- illness.

1. Many throat specialists suggest you avoid drafts and inclement weather when suffering from a minor sore throat.

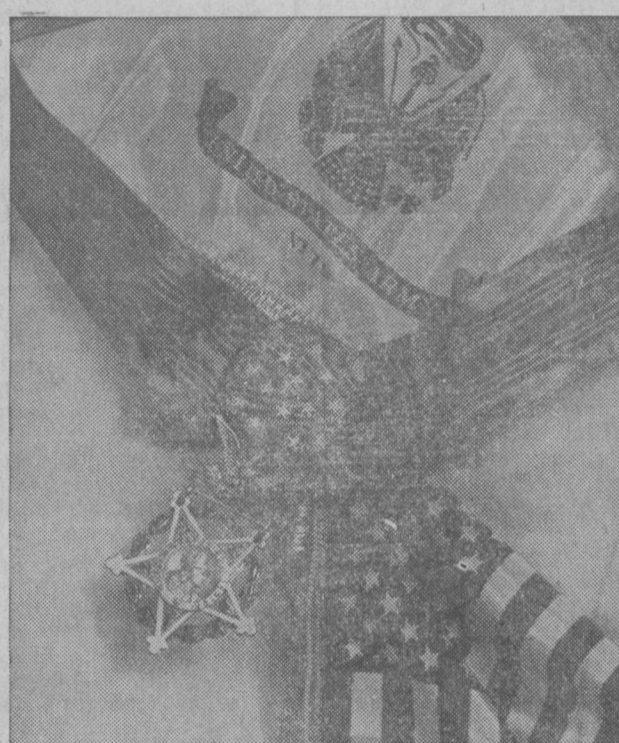
2. Drink plenty of liquids, physicians say, and avoid dry, crunchy foods which may irritate your throat further. If you're a smoker it's best to avoid still another irritant.

3. Stay at home, if possible. Many physicians recommend Chloraseptic, a non-prescription topical anesthetic oral solution which may be sprayed or gargled for prompt relief from the pain and discomfort of minor sore throats.

4. If you must be on the go, Chloraseptic Lozenges offer the same topical anesthetic relief and they can be carried with you.

5. Remember: If your sore throat seems to linger, or if a high fever, muscular aches or pains, feelings of malaise, or other complications occur, the first call you should make is to your physician.

**The Medal of Honor Symbol of Courage**



**MEDAL OF HONOR**—He who possesses the Medal of Honor is the holder of the highest military award for bravery that can be given to any individual in the United States of America.

This symbol of bronze, wreathed in green enamel and held by a white-starred ribbon of blue silk, bestows upon the man who has it a great privilege -- that of sharing in the company of the few heroes who have been honored by the award of the same Medal he wears.

A gold finished star of bronze is suspended from a bar bearing the inscription "Valor" and is surmounted by an eagle grasping laurel leaves in one claw and arrows in the other. In the center of the star is the head of Minerva, the ancient Roman Goddess, surrounded by the inscription "United States of America."

**ON THE LAWN**

With Larry Lawrence  
Keep Your Credit Green

Readers of a trade paper were recently advised by a top official of one of our biggest store chains: "All you have to do to check customers' credit is to cruise the streets. Those who keep up their homes are the best risks." (Excuse me while I mow the front

**Venereal Disease A Serious National Problem, Says AMA**

Venereal disease is spreading so rapidly that it now represents this nation's most urgent communicable disease problem.

VD is hitting particularly hard among teenagers and young adults, according to the American Medical Association.

The venereal diseases are infecting about two Americans a minute—3,000 a day, or 1,100,000 a year. Cases of infectious syphilis have almost tripled in this country in the past five years. More than a million

new cases of gonorrhea are developing annually.

VD can blind, cripple, and even kill.

The ravages of venereal diseases are all needless tragedy, says the AMA, because both syphilis and gonorrhea can be avoided. If contracted, they can be cured by prompt medical treatment.

The cure for both diseases—penicillin—has been available since 1943. Any family physician or public health clinic can administer

prompt treatment.

Venereal disease is caused by intimate personal contact.

Complacency, ignorance, and a free-and-easy attitude toward moral standards are partly responsible for the spread of VD; the increasing use of alcohol, especially among young people, also plays a role.

Authorities believe, however, that thousands of young people simply aren't aware of the dangers of VD. Once infected, they are complacent about treatment.

One of the first signs of syphilis may be a painless, ulcerating sore. Gonorrhea produces inflammation of the genital and urinary tracts, and a discharge of pus.

A person may contract syphilis and be unaware that he has the disease. After the first symptoms, the germs may remain hidden in the body for as long as 20 years before any damage is discovered. Then the person may become crippled, develop heart disease, blood vessel disease, blindness, or show mental symptoms. Even death may result from this hidden stage of syphilis.

If left untreated, gonorrhea may be responsible for arthritis, endocarditis, sterility, and blindness.

If a person suspects he may have contracted venereal disease, he should go to a physician immediately.



VD should be treated promptly by a physician.

**CHEVROLET CUSTOM CAMPER**



**WITH SPECIAL EQUIPMENT FOR OUTDOOR LIVING!**

Want to make life more enjoyable? Get a specially equipped Chevy Custom Camper pickup. Add the camper body of your choice. You can use the truck for work with body detached, then mount your camper body and head for the great outdoors. Go where you want, stop when you like. You're free as the breeze! And you can go often because it doesn't cost much. A Chevy Custom Camper will add a most pleasurable new dimension to your life.



Talk to your Chevrolet dealer about any type of truck.

19-2654

**Wilhide Chevrolet-Olds, Inc.**  
THURMONT MARYLAND

**Before your poker game tonight check the news on radio. You'll have a good deal to say when the cold cuts come. Radio is your fastest news reporter. Fastest and best: your CBS Radio News station** (which might report your royal flush).

A CBS Radio Network Station. **WFMD - 930**



**THE MIGHTY MIDGET**  
**WANT ADS WORK**

**FOR SALE**

**FOR SALE**—Holland Bulbs: Gladiolas, Dahlias, Begonias and Tannas. Emmitsburg Feed and Farm Supply, E. Main St. We give S&H Green Stamps.

**FOR SALE**  
1963 Ford Galaxie 500  
Cruisomatic; Power Steering;  
Low Mileage; 6 White Wall  
Tires; A-1 Condition; Black.  
CHARLES B. SHORB  
Phone 447-2121

**FOR SALE**—Work Shirts, Pants, Jackets, Gloves, Rubber Footwear. We give S&H Green Stamps. Emmitsburg Feed and Farm Supply, E. Main St. tf

**FOR SALE**  
All Types of Awnings  
**ALUMINUM SIDING**  
Storm Door & Windows  
Fern Ohler - Gettysburg, Pa.  
Phone EDgewood 4-4612

**FARMERS and DAIRYMEN**  
Terramycin  
Mastitis — Scours Tablets  
Injectables  
All Veterinarian Supplies  
**PEOPLES DRUG STORE**  
Gettysburg, Pa.

**FOR SALE** — EMCO 16% Hog Feed, \$4.00 cwt. Emmitsburg Feed and Farm Supply, East Main St.

**FOR SALE**—Small Case Tractor. Phone 447-2207. 1t

**FOR SALE**—New 4-bedroom home in country near Rainbow Lake. Call 447-2545 after 5 p.m., or anytime Saturday. 4/22/4tp

**NOTICES**

**BUS TRIPS**  
Corning Glass and Niagara Falls  
May 21, 1966 — \$20

Williamsburg, Va.  
Three Trips (2 days)—\$18.75  
June 11 — July 9 — August 6  
To Make Reservations, Call  
140 S. Seton Ave., Emmitsburg  
Phone 301-447-3661

**NOTICE**—Evening of Games, benefit Emmitsburg Cub Scouts, Saturday, April 30, starting at 7:30 p.m. in the Fire Hall. Nice prizes will be offered and refreshments will be on sale. The public is cordially invited to attend. 1tp

**NOTICE**—License tag pickup service. Myers Shell Station, Thurmont, Md. Phone 271-2747. 2/25/10t

**HELP WANTED**—Waitress, 18 years of age or older. Apply in person at The Palms, Emmitsburg Md. 1t

**HELP WANTED**—Office Girl, accurate with figures, typing required; Good pay — Company benefits. Apply at office, 7 a.m. to 4 p.m. weekdays, Thurmont Shoe Co., phone 271-9211. 4/15/2t

**GADGET BAGS**—Keep your photo equipment handy on your next trip—choose from the large selection of Gadget Bags, as low as \$2.49 at Dave's Photo Supply on Steinwehr Ave. in Gettysburg. 4/15/3t

**CUSTOM SLAUGHTERING AND PROCESSING OF BEEF**  
Cut and wrapped for the freezer to your specifications.  
NORMAN SHRIVER, JR.  
Phone 447-4674 - Emmitsburg, Md.  
We sell beef by half or quarters

**EXCLUSIVE**—Only in the Kimball Consolette piano, can you have so many really exclusive features. Direct - action blow, life-crowned tone-board, pipe organ tone chamber, exquisite styling and finishes are only a few. See them now at Menchey Music Service, 430 Carlisle St., Hanover. 1t

**GROW YOUR OWN FRUIT** — Write for Free Copy new Planting Guide-Catalog in color offered by Virginia's largest growers of Fruit Trees, Nut Trees, Berry Plants, Grape Vines, Landscaping Plant Material. Salespeople wanted. WAYNESBORO NURSERIES, Waynesboro, Virginia 22980. 4/8/4t

**SPECIAL PRICE** in April on Tractor Tires: 550x16, 4-ply, \$13.15 plus tax; 600x16 4-ply, \$14.25 plus tax. Emmitsburg Feed & Farm Supply. We give S&H Green Stamps.

**Complete Auto and Body Repair**  
New and Used Cars  
**WANTZ CHEVROLET INC.**  
Taneytown, Maryland  
Phone 756-6006  
Open Thursday & Friday til 9 p.m.

**PIZZA SUBS**  
Carry-Out Service  
**THE PALMS**  
Phone 7-2303 or 7-4426  
Emmitsburg, Md.

**HARRIET'S BEAUTY SHOP**  
402 1/2 W. Main St. Emmitsburg  
Phone 447-2495  
—Open Tuesday Thru Saturday—  
Harriet Valentine

**WEDDING PORTRAITS**  
Groups At The Studio  
**WEDDING ALBUMS**  
Color or Black & White  
Finishes. Call us for prices.

**THE LANE STUDIO**  
34 York St.  
Gettysburg, Pa.  
Over 30 Years Experience

**NOTICE**—Piano tuning, repairing, and rebuilding. Write Everhart and Sons, 273 Frederick St., Hanover, Pa. Phone MEloree 2-8177. tf

**CARD PARTY** — Benefit St. Anthony's Shrine, Emmitsburg, Wed., April 27, starting at 8:00 p.m. Draw prizes: \$15, \$10, \$5, and \$3. Beautiful prizes plus door prizes. Admission 50 cents. Everyone welcome. 4/8/3t

**ATTENTION MARYLAND USED CAR BUYERS!**  
We have made arrangements to have your car Md. State inspected and any other detail work involved, at our expense when you buy your car from us.  
Financing arranged with no money down if necessary to persons with a steady job and good credit record.  
40 cars to choose from at all times  
**ZENTZ AUTO SALES**  
Carroll M. Zentz, Owner  
Phone 334-6116 Gettysburg, Pa.  
Open Daily 9 a.m. to 9 p.m. tf

**FOR RENT**

**FOR RENT** — 7 room home in country with up-to-date conveniences. Apply Welty's Meat Market, West Main St. tf

**FOR RENT** — Scaffold, cement trowels and mixers, mortar mixers, concrete breakers and vibrators, earth compactors, generators, steel sidewalk and curbing forms for rent. Rent-it, Hagerstown. RE 9-0599. 4/15/4tp

**NOTICE TO BIDDERS**  
The Board of Education of Frederick County, 115 East Church Street, Frederick, Maryland, invites bids on supplying and delivering science and math equipment for Governor Thomas Johnson High School, Frederick Maryland.  
Specifications and proposal sheets may be obtained at the Board of Education Office.  
Sealed bids will be received at the Board of Education Office until 10:00 A.M. (DST), May 10, 1966.  
The Board of Education reserves the right to reject any or all proposals and to waive informalities.  
BY ORDER OF THE BOARD OF EDUCATION OF FREDERICK COUNTY.  
JOHN L. CARNOCHAN, JR.  
Secretary-Treasurer  
Bid #652-B-14 1t

**HELP WANTED**  
MALE

**DRAFTSMEN**  
**DESIGN LAYOUT**  
**DETAIL**  
Unusual opportunity to join a fast growing material-handling equipment manufacturer. Qualified persons with creative ability and initiative will have excellent opportunity to advance in this field. Openings are for the design, layout and detailing of heavy machinery and components. Pleasant working conditions. . . outstanding fringe benefits. Send complete resume or apply in person to:  
Personnel Manager  
**INDUSTRIAL SYSTEMS**  
A Division of Aerojet-General Corporation  
P.O. Box 460  
Frederick, Maryland 21701  
(Plant located near Frederick Airport)  
An Equal Opportunity Employer

**OUR LIBRARY**

New and interesting books added to the collection in the library this week include antiques, biographies and country living. "Home Furnishing With Antiques," by F. Grodon Roe, is a book for those who are seeking the pleasures of "creatively using antique things in a personal setting. It is for the homemaker who is prepared to 'mix it'—antiques-not-so-antiques and modern to-

gether. Large and small articles, furniture of all types, 'china' and glass, ornaments of wood and other materials, decorative objects of many kinds, pictures and prints—all are included in this volume. "Creatures and Contentments," by Barbara Webster. For the past ten years Barbara and her husband have lived in rural Chester County, Pennsylvania, and she writes here of that life. We learn of the contentments of being snow-bound, of a leisurely visit to a

neighbor's farm, of watching glowworms on a summer night. We meet the familiar country creatures—a horse, some barn cats, a certain groundhog who had no concept of Fair Play, and a shrew that met a tiny, tragic end.

The setting is the fields, the garden, and the hills, and of course the wonderful old house, with plants flourishing riotously, despite her cheerful lack of attention to them. We go with the author into her county kitchen, where she describes and gives the recipe for—a blackberry roly-poly and reflects on cooking, past and present. We also explore the attic with its memorabilia.

"Always the Priest," by Gabriel Richard. Men of sound religious convictions have always fulfilled their civic duties. Though the priest and the politician usually prove an unhappy combination, there is an occasional rare exception. One is the extraordinary pioneer, missionary and patriot, Gabriel Richard, S.S., co-founder of the University of Michigan and the only priest ever elected to Congress.

Don't gamble that your home is safe from fire, says the National Fire Protection Association. How about those oily rags in the kitchen closet—or those old clothes and papers in the attic? One tiny, stray spark and you're out of luck—and a home. Clean up!



—Photograph by Paul Beale  
**CIRCUIT RIDER**—Rev. William Richardson, Methodist Minister from Omaha, Nebraska, being greeted by Dr. William Carr, Emmitsburg Veterinarian, who stabled his horse, Silver, for the night.

**HELP WANTED**  
TRAINEES AND EXPERIENCED SHOE WORKERS  
FOR DAY SHIFT, 7 TO 4.  
**THURMONT SHOE CO.**  
THURMONT, MARYLAND  
Apply At Office: Weekdays 7 A.M. to 4 P.M.  
Saturday, 10 to 12

**PURINA**



**SERVICE**

We grind your grain and mix feed rations according to Purina Research-Approved Formulas

See us for  
Purina Chows  
and Purina  
Health Aids for  
livestock and poultry.



**THURMONT COOPERATIVE INC.**  
Phone CR 1-3111  
Rocky Ridge Warehouse  
Phone HI 7-3824

**SHERMAN'S**

**Men's & Boys' Outfitters**

**Clothing - Furnishings And Shoes**

Also  
**HUSH PUPPIES—and SHOES FOR ENTIRE FAMILY**

**SHERMAN'S**

YORK STREET GETTYSBURG, PA.  
—Open Friday and Saturday Evenings—



**Draw near to God, and He will draw near to you**  
—(James 4:8)

We all need at least a brief period of silence each day to pull our thoughts together and to reflect on the deeper realities of life. Set aside at least a few minutes every day for reading, meditation and prayer. This practice deepens our inner life—without which external activity can easily become shallow and devoid of true meaning.



VFW POST HOME

**GRAND OPENING**

**FOREST PARK, Hanover, Pa.**

SUNDAY, APRIL 24

See Ira Renoll's Indoor Miniature Farm Display  
The Finest Display of this kind in the country  
Free Show, Afternoon and Night, by Leonard T. Zinn's Accordion and Guitar Band  
—Hold Your Picnic Here. Phone 633-5286—

**BURPEE'S SEEDS**

Garden Tools — Onion Sets  
ROSE BUSHES Hybrid Tea and Climbers - Everblooming

Gladiolus - Gloxinia - Begonia Flower Bulbs  
PEAT MOSS - LIME - VIGORO - BONE MEAL  
COW AND SHEEP MANURE - POTTING SOIL

**shop REDDING'S**

30 York Street Gettysburg, Pa.

**ZENTZ AUTO SALES**

Gettysburg, Pa.

Carroll Zentz starts the spring of 1966 with the largest and finest selection of good used cars and pickup trucks in the 23 years he has been in the auto business. You won't find better buys anywhere on these clean, guaranteed, "ready for the road" cars!

**1965 MUSTANG**

2-door hardtop, 289, V-8 engine with straight stick, radio and many other extras. 1 year or 15,000 miles still left on the factory warranty. Have plenty at only \$2,995



Carroll Zentz

<b>1964 CHEVY II</b> 4-door sedan, Economical "6" engine with automatic drive, radio and heater, Dark Blue. Same as new \$1,495	<b>1963 FORD</b> Galaxie sedan, Economical "6" with straight stick, Maroon with matching interior, 21,000 true miles \$1,295	<b>1962 CHEVROLET</b> Bel Air, 4-door, small V-8 engine with straight stick, Beige with matching interior. Nice \$1,295
<b>1964 FORD COUNTRY SQUIRE</b> Station Wagon with factory air-conditioning, V-8 engine, Cruisomatic drive, power steering, 21,000 true miles, 4 new premium tires just installed. This Dark Green Squire is immaculate. Cost new about \$4,500. A real buy for only \$2,195	<b>1963 DODGE</b> 4-door sedan, V-8, automatic. As nice as they come \$1,295	<b>1961 FALCON</b> Deluxe, 4-door with automatic drive, White. Nice and clean, and only \$895
<b>1964 BUICK LeSABRE</b> 4-door sedan, automatic power steering and brakes, Light Blue, 23,000 true miles. Compare this car anywhere! \$2,195	<b>1963 CHEVROLET</b> Bel Air, 4-door sedan, Economical "6" engine with straight stick, Red with beige interior. None nicer anywhere \$1,395	<b>1960 OLDSMOBILE</b> Super "88" 4-door sedan, power steering and brakes, A-1 condition throughout, Dark blue with matching interior. \$995
<b>1964 BUICK LeSABRE</b> 4-door hardtop, automatic, power steering, Beige with white top, 15,000 true miles, 4 new premium tires just installed. A real nice looking car \$2,395	<b>1963 OLDSMOBILE</b> "88," 4-door sedan, automatic, power steering, light blue. For above average \$1,795	<b>1960 COMET</b> Sedan, straight shift. We just completely overhauled the engine. A-1 condition throughout \$795
<b>1964 FORD</b> Galaxie "500," 4-door hardtop, Turquoise with white top and black vinyl interior. Sharp car! V-8 engine with cruismatic drive, 23,500 true miles, 4 new premium tires just installed. Car cost new about \$3,400. Buy it now for only \$1,995	<b>1963 FALCON</b> Futura, 4-door with the big "6" engine and straight stick, 1 local owner since new \$1,195	<b>1960 STUDEBAKER</b> Lark sedan, automatic drive. Owned by local lady. Perfect \$595
<b>1963 CHEVROLET</b> Impala, 4-door hardtop. Small V-8 engine and power steering, Turquoise with white top, 1 owner with 21,000 true miles. A nice one \$1,795	<b>1963 CORVAIR</b> 2-door sedan, White. Straight stick, A-1 throughout \$1,195	<b>1959 FORD</b> Sedan, V-8, automatic \$395
<b>1963 CHEVROLET</b> Bel Air, 4-door sedan, small V-8 engine and power steering, 1 owner, with 22,000 true miles. This car is exceptionally clean and good \$1,595	<b>1963 OLDSMOBILE</b> "88" convertible. Red with white top and beige vinyl interior, power steering. Real sporty and clean as a pin. Compare this car anywhere at only \$1,995	<b>1958 FORD</b> Fairlane "500," 4-door sedan, V-8, automatic and power steering, 60,000 actual miles, 1 owner, 2-tone red and white. Extra good condition for a '58 \$795
<b>1963 PONTIAC</b> Catalina, 4-door sedan, automatic, power steering, Dark blue with white top, 4 new premium tires. This car shows very little wear \$1,795	<b>1962 VOLKSWAGEN</b> Convertible, Blue with a new beige top and beige vinyl interior. Cost new about \$2,400. Buy it now for \$1,195	<b>1956 FORD</b> 4-door hardtop, V-8, automatic, power steering. A 2-owner car in perfect condition \$495
	<b>1962 FORD</b> Galaxie "500" sedan, 1 owner with 37,000 true miles, V-8 engine, automatic drive and power steering, Turquoise with matching interior. This car has had no paint work anywhere and is so nice that it must be seen to be fully appreciated \$1,495	<b>1958 MERCURY</b> Hardtop, automatic with floor shift. Clean and good \$395
		<b>1955 FORD</b> 2-door hardtop, V-8, automatic. \$195
		<b>1955 BUICK</b> Hardtop \$150
		<b>1952 STUDEBAKER</b> Champion, 4-door, "6", stick shift. Runs well \$150

**LOW PRICED PICKUP TRUCKS**

All Have Good Engines and Run O.K.  
Your Choice, \$395

Ford, 1/2-ton GMC, 1/2-ton Studebaker, 1/2-ton  
Little or no money down, if necessary, to person with a steady job and good credit record. Cars over \$700 are guaranteed to be in perfect mechanical condition.

**ZENTZ AUTO SALES**

CARLISLE STREET PHONE 334-6116 GETTYSBURG, PA.

**"Circuit Rider"**

(Continued From Page 1)

He was slowed often by people who would stop along the highway to talk and wish him luck. He is keeping a diary of his trip, not only in a notebook, but on a tape recorder with which he records messages from the friends he meets along the way. He hopes to write a book about the trip when he gets back home. His horse, Silver, which he loves with passion, will be sent back home by means of his brother's trailer. His brother is on his way east to pick her up.

Rev. Richardson has been quite an adventurer having been a missionary to Cuba before Castro. He has travelled quite extensively, and has been in three airplane crashes.

**THURSDAY NITE  
LADIES' BOWLING LEAGUE**  
(Rainbow Lanes)

	W	L
Texaco Stars	33	11
The Raft Restaurant	26	18
Ridge Homes	25	19

Screwballs	25	19
Alley Kats	18	26
Crouse's Cut Rate	18	26
Hits and Mrs.	17	27
Village Liquors	14	30

**April 14 Results**

Ridge Homes 4; Screwballs 0  
Texaco Stars 3; Crouse's 1  
Alley Kats 3; Hits and Mrs. 1  
Village Liquors 3; The Raft 1  
High game, 131, R. Leese (Screwballs); high set 357, A. Lingg (Ridge Homes).

**4-H Club Meets**

The Emmitsburg 4-H Club met Monday at the home of Gary Seiss. The meeting was opened by the vice president with the 4-H Pledge. The main topic of business was the organization of a scrap drive. The drive will be held Sat., April 30. All persons wishing to donate to the drive are asked to call Dave Swomley, 447-4941 or Bill Wivell, 447-2218. Any paper, rags, string or metal will be accepted and greatly appreciated. The meeting was then adjourned and refreshments served.



**OPEN HOUSE**—Sister Madeleine, chairman of the Home Economics Department at St. Joseph College, and committee chairmen, (lo to ro.), Maureen Mullin, Gerylyn King, Judy Nilsen, Elaine Long, and Monica Norris, await guests at the main entrance to the Home Ec House to the department's annual Open House on Tuesday, April 26.

**BADGES AWARDED**

At their regular meeting last Monday at the Methodist Church, members of Girl Scout Troop 1316 were awarded the badges they had earned in the past six months by Mrs. Myers. The following Ca-

dettes received badges: Barbie Myers, Good Grooming, Games Leader, and Animal Kingdom mammal; Mary Margaret Koontz, Campcraft, Homemaker, Plant Kingdom-trees and plants; Mary Kay Sherwin, Plant Kingdom-

plants; Peggy O'Brien, Hostess, Interior Decorator; Diane Dutton, Pioneer; Connie Michael, Star, Swimmer, Hiker; Clara Jean Tyler, Dressmaker.

**VFW AMBULANCE**

Eddie Pryor, Emmitsburg, was transported to the Warner Hospital last Thursday in the VFW ambulance. The driver was Leo M. Boyle.

The statue near Washington, D. C., depicting the historic flag-raising on Iwo Jima, weighs 100 tons. The figures are 32 feet high. Approximate 300 landings on foreign shores have been made by Marines since the Corps was established in 1775.

**WEEKLY NIGHT OF GAMES**

FAIRFIELD FIRE HALL  
EVERY TUESDAY — 7:30 P. M.

Sponsored By Saint Mary's Church  
Free Chartered Bus—Leaves St. Anthony's 6:50; Emmitsburg 7  
—300 REASONS TO ATTEND—

**DELICIOUS FRIED CHICKEN**

2 VEGETABLES, ROLL and BUTTER

**\$1.25 - All You Can Eat - \$1.25**

EVERY SATURDAY — 5 TO 10 P. M.

ORGAN MUSIC SATURDAY NIGHT  
—BY ALBY—

Sunday—2-6 P.M.—Italian Spaghetti

Anti-Pasto Salad - Garlic Bread.

\$1.25

**Fitzgerald's Shamrock**

Restaurant-Motel — 6 Miles South of Emmitsburg  
PHONE: 271-5982

**EMMITSBURG HIGH SCHOOL**

**Senior Class**

Presents the Broadway Musical

**"The Sound of Music"**

MUSIC BY RICHARDS RODGERS  
LYRICS BY OSCAR HAMMERSTEIN II

Friday & Saturday, April 22-23

7:30 P. M.

ADULTS: \$1.00 — STUDENTS: 50c

THIS ADVERTISEMENT COURTESY OF

**CROUSE'S**

"ON THE SQUARE"

**NOTICE**

We Will Close At 6:00 P. M. Saturday, April 23, In Order To Attend The Emmitsburg High School Senior Play.

**CROUSE'S**

"ON THE SQUARE"

EMMITSBURG, MARYLAND

—OPEN SUNDAYS—

**PUBLIC SALE**

VALUABLE RIDING HORSES  
FRIDAY EVENING, APRIL 29 - 5:30 P.M.

The undersigned, going out of the horse business, will offer at public sale located 3 mi. South of Fairfield or 4 mi. North of Emmitsburg, along the Tract Road the following:

**Bukkie Registered Arabian Stallion**

Foaled by Tisal, Bred by Orpah, 9117 in the Arabian Stud Book, 8 yrs. old. Red Stallion quarter horse, 3 yrs.; Black Stallion Arabian nad Hunter, 3 yrs.

**9 mares, enfold or colt by side by sale**

Lady Pinto, 7 yrs.; 2 Red Mares, 1-4 yrs., 1-3 yrs.; 4 Palomino Mares, 6 yrs., 3 yrs, and 2-2yrs.; Buckskin Mare quarter horse and Appaloosa, 3 yrs.; Black Hunter Mare, 9 yrs.

Also the following: 2 Red Fillies, 1 yr. and 1 1/2 yrs.; 2 Buckskin Fillies, 1 yr.; 2 Palomino Fillies, 1 yr.; Tennessee Walker Stud 1 1/2 yrs.; Pinto Stud, 1 1/2 yrs.; Light Brown Stud, 1 yr.; and Dark Brown Stud, 2 yrs.

NOTE: If looking for good riding horses plan to attend this sale.

TERMS: Cash. Stand Rights Reserved.

**DOUGLAS PIPER, Owner**

Piper Game Lands Shooting Preserve  
R.D. 2, Fairfield, Pa. Phone 642-5353

CLAIR R. SLAYBAUGH, Auctioneer  
Idaville, Pa., Phone 677-7479  
JAY BROWN, Clerk

**Boyles' Specials**

Hi-C Drinks, 46 oz.	3/95c
Birdseye Vegetables—Peas, Cut Corn, Peas & Carrots, Chopped Spinach, Leaf Spinach	6/99c
Leadway Cheese Corn Sticks	2/69c
Kleenex Tissues, 200's	5/99c
L&S Sweet Dill Strips, 16 oz.	39c
Chase & Sanborn Coffee, 8c Off	2 lb. \$1.59
Blue Bonnet Margarine, 1/4's	2/55c
Pillsbury Flour, 25 lb.	\$2.29
Goetze's Morning Cheer Bacon	lb. 65c
Nabisco Family Choice Cookies	4/\$1.00
Celery	Stalk, 19c
Green Beans	lb. 19c
Egg Plants	each, 19c
Cucumbers	each, 9c
New Cabbage	lb. 9c
California Navel Oranges	doz. 49c

**B. H. BOYLE & SONS, INC.**

Phone HI 7-4111 Emmitsburg, Md.

**Notice Of Election**

The Burgess and Commissioners of Emmitsburg, Maryland

ANNOUNCE THE

**ANNUAL ELECTION**

Of The

TOWN OF EMMITSBURG

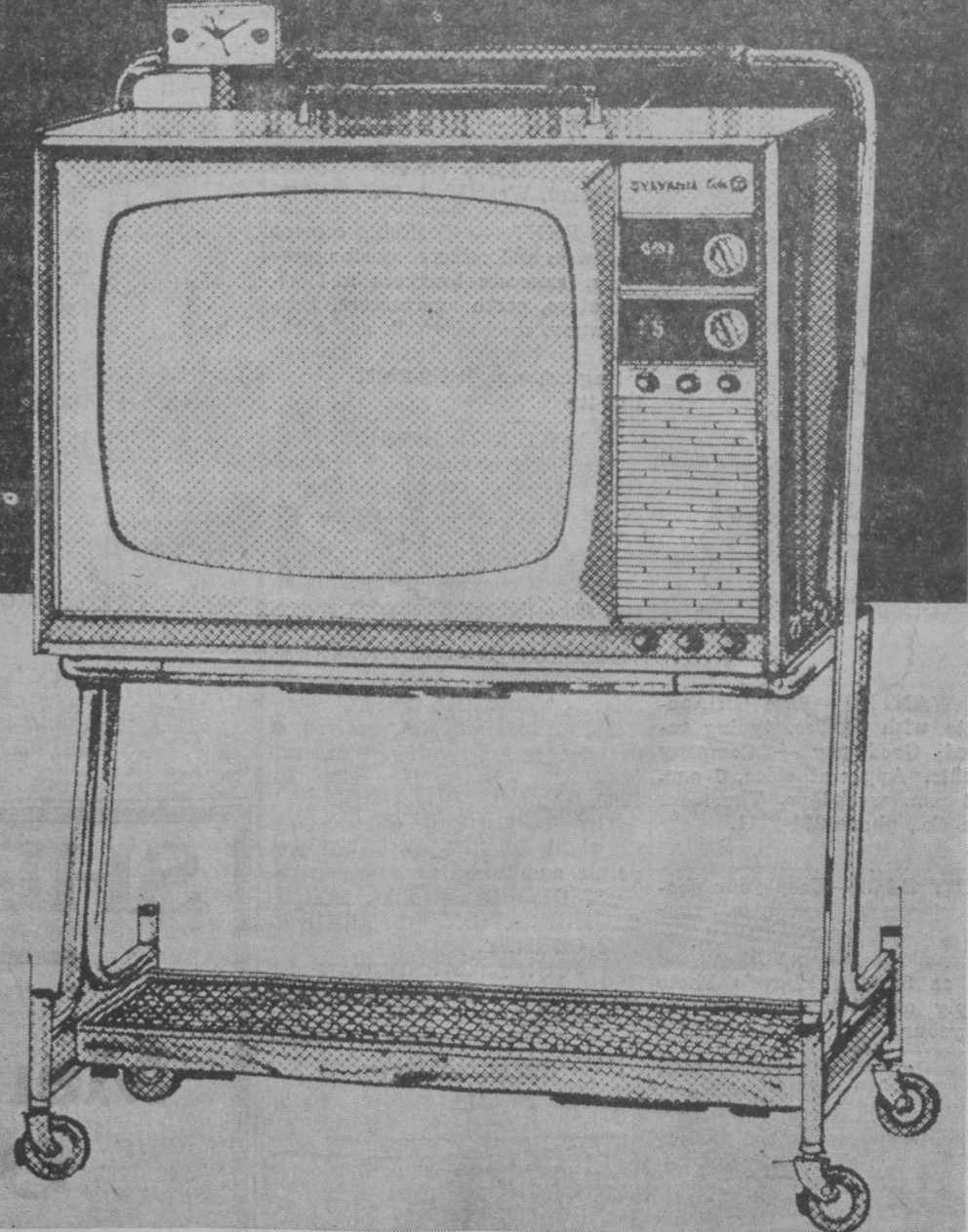
**TUESDAY, APRIL 26**

**A BURGESS AND ONE COMMISSIONER WILL BE ELECTED**

The Polls will be open from 12 Noon to 7:00 P. M. (DST) and voting will take place in the Town Office near the Square.

IT IS YOUR CIVIC DUTY TO VOTE IN THE SELECTION OF YOUR TOWN GOVERNMENT!

it's here!  
**19" COLOR**  
with rollabout convenience



dependable! maneuverable! affordable!

**\$399.50**

Now your family can enjoy Color Television at its finest anywhere in the home. Sylvania's 19" Color Rollabout offers unmatched convenience and enjoyment at a wonderfully low price. Features include: Sylvania 19" "color bright 85" Picture Tube ■ Color Stream Chassis ■ Simplified Color Tuning ■ Pre-set Fine Tuning ■ Automatic Degaussing (demagnetizing) ■ Pre-set Volume Control ■ Large 7" oval speaker ■ Illuminated Channel Indicators ■ Curtain Timer Electric Clock with "doze-off" or "wake-up" convenience. ■ Deluxe Rollabout Stand.\*

COME IN FOR A DEMONSTRATION

**Myers' Radio, TV & Record Shop**

Phone Hillcrest 7-2202

EMMITSBURG, MD.