

Emmitsburg Chronicle

EMMITSBURG, FREDERICK COUNTY, MARYLAND
 Published weekly on Friday by the CHRONICLE PRESS INCORPORATED, 200
 Mason Avenue, Emmitsburg, Maryland. Telephone HILcrest 7-2511.

CHARLES ARTHUR ELDRED, Editor-Publisher

All Communications and Checks intended for this Paper should be addressed and
 made payable to the CHRONICLE PRESS INCORPORATED, Emmitsburg, Md.

Copy for Advertisements must be received in this office not later than Wednesday
 evening to insure publication in the current week's edition. Advertising rates fur-
 nished upon request. Subscription rate, \$3.00 per year in advance.

Entered as Second Class Matter at the Postoffice at Emmitsburg, Maryland, under
 the Congressional Act of March 3, 1879.



Scout Exposition Saturday

Five service clubs are sponsoring the Scouting Exposition to be held in the Frederick Armory on Saturday, May 12, 1962, and will participate in the parade and ceremonies held in conjunction with this event.

Clarence Snyder, president of the Evening Optimists; Clyde Roney, Jr., president of Kiwanis; Richard Buckheimer, president of Rotary; E. Edward Smith, president of Frederick Civilians, and Jacob R. Ramsburg, president of Frederick Lions will represent

their organizations.

A booth has been set aside at the Exposition and will carry the banners of those organizations sponsoring the biggest Scouting event in the current year.

The Girl Scouts of Frederick County will be in uniform and distribute programs to the patrons of the Exposition. This is in tribute to the 50th Anniversary of the Girl Scout program being celebrated this year.

To date over 25 booths have been reserved for Scout Units all over Frederick County who will demonstrate such scouting skills as Scout handicraft; Indian Lore and handicraft; weaving and pack-

BABSON

(Continued from Page Six)

loading, leather craft, first aid; knife and ax; reforestation; nature and evolution of Morse code; camping; foil cooking; pioneering; tin can cookery; home repairs, signaling, making pack frames; pancake and donut making.

In addition one of the Cub Packs will present a musical theme stage show.

Cubs, Scouts and Explorers are now selling tickets for this big Scout show. Tickets are \$1.00 and are usable at both the local Scout Exposition in the Armory on May 12th as well as the Council Exposition to be held two weeks later in the Washington Armory.

Each Pack, Troop or Post keeps 25% of the price of admission for their own unit and this is one affair at which the boys are permitted to wear their uniform in conducting their sales.

George A. Zeigler, vice chairman of the Francis Scott Key District is General Chairman of the Scout Exposition. Richard Shipley is ticket chairman.

Nearly every unit in the District, comprising all of Frederick County, is participating in this gala show which, like the Exposition held last year, will be one of the highlights of the Scouting program this year.

It's a real friend who likes you in spite of all he knows about you.

do need good health, a good wife, plenty of sleep, and to say your prayers.

(9) The best "gamble" of all is a bunch of good children. Have enough of them and some are sure to turn out to be "whizzes"—very smart. Keep out of debt. I have never borrowed or loaned one dollar in my life or bought on margin.

(10) Profits must come from forecasting the future. Your bankers will call it "gambling." But every forward-looking man has been a "gambler"—from Columbus to those scientists who, like M.I.T.'s Provost Charles H. Townes, are now working on condensed light rays and masers and lasers! Forget the moon; but capitalize on four big things: (1) The heat of the sun; (2) the coming scarcity of fresh water; (3) the cellulose of wood and cotton, to give us cellophans, plastics and fibers; and (4), science. Stick to these four fundamentals, although you can diversify your holdings over many companies.

We are living in a new age, the age of "television," fuel cells, ion engines, harnessing gravity and good bacteria. Don't spend too much time on present educational courses based

only upon memory. Rather, learn to forecast the future by reading scientific magazines. In a previous weekly column I discussed stocks in good honest drug companies. Just now they may be selling for all they are worth. But these drug companies are great "gamblers"; if you own their stocks they will do the "gambling" for you.

In closing let me say that the U. S. Navy is supporting a project at Santa Fe Springs, California to make bacteria batteries! The chemists are raising bacteria for new insecti-

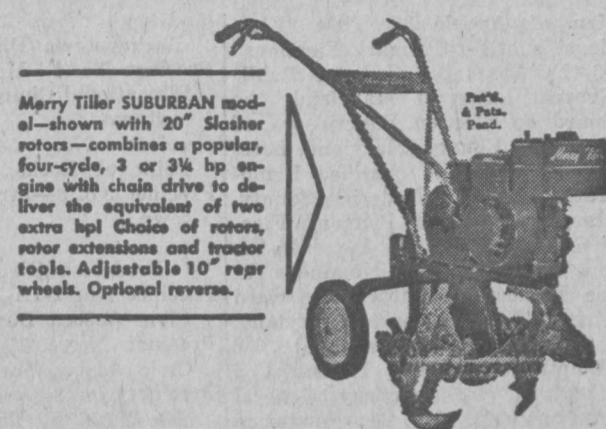
cides. The seed dealers are using same to improve quality of seeds. Interest in good bacteria and other microorganisms is now so high that the American Type Culture Collection, the national repository for "germs" in Washington, D. C., is planning to build new facilities to house its expanding activities.

Read more scientific news! *Price \$17.50 postpaid from Score and Script, 76 Chestnut St., Boston, Mass. **Such as the M.I.T. Technology Review, Room 1-281, Massachusetts Institute of Technology, Cambridge, Mass., Price \$4.00 (Read its "Trend of Affairs" columns.)



You'll plant with confidence . . . harvest for profit when you use P-A-G hybrids . . .
CHARLES B. SHORB
 Phone HI 7-2121
 Emmitsburg, Md.
 —WE DELIVER—

Man, that's Corn!



Merry Tiller SUBURBAN model—shown with 20" Slesher rotors—combines a popular, four-cycle, 3 or 3 1/2 hp engine with chain drive to deliver the equivalent of two extra hpl. Choice of rotors, rotor extensions and tractor tools. Adjustable 10" rear wheels. Optional reverse.



Emmitsburg Feed & Farm Supply
 Phone HI 7-3612 Emmitsburg, Md.
 Ralph D. Lindsey, Prop.

YOUR SOUTHERN STATES COOPERATIVE SERVICE AGENCY

EMMITSBURG NEEDS MAHONEY

Ex-Mayor Houck - Commissioner Flax

ENDORSE THE TICKET OF

Mahoney-Barrick-Lee-Sickles-Levin

THESE MEN ARE INTERESTED IN OUR PROBLEMS!

The Present Administration Has Bungled These Projects That Affect The People Of Emmitsburg:

- Complete Dualization of U. S. Route 15 North and South, Messed Up the Past 8 Years.
- Discriminatory Treatment of Town By the State Roads Commission.
- Failure of State Department of Economic Development to Aid Town in Obtaining Industry.
- Complete School Bus Transportation For All.
- No Improvements to Streets in Many Years.
- Deliberately Betrayed Our Local Teachers.

EDWIN F. NIKIRK
 ATTORNEY & COUNSELLOR-AT-LAW
 105 West Second Street
 Frederick, Maryland

Dear Voters and Taxpayers of Emmitsburg:

Frederick County has never enjoyed the honor and distinction of having the Attorney General of Maryland elected from our midst. The prospects of electing our "favorite son" candidate, Samuel W. Barrick to this high office are very promising, and it is on behalf of the candidacy of Sam and his running mates that I am writing to you on the following issues:

- (1) The Unit System of nominating candidates.
- (2) Our personal obligation and allegiance to our "favorite son" candidate.

1. As you are no doubt aware, candidates for state-wide office are nominated on the Unit System basis, and not by the majority of votes cast in the entire state. Each county and legislative district of Baltimore City is entitled to the same number of unit votes as it has representation in the House of Delegates and Senate of Maryland. Therefore, Frederick County has seven (7) Unit Votes, and regardless of the number of votes cast for Sam in Frederick County he can only benefit by seven (7) Unit Votes. A total of seventy-seven (77) unit votes over the entire state are required for nomination. It naturally follows that our "favorite son" candidate must necessarily depend most heavily on the Mahoney-Lee, etc. ticket to carry him and his campaign in the other counties and legislative districts of Baltimore City if he is to have a ghost of a chance for nomination. The Mahoney-Lee, etc. ticket is wholeheartedly carrying Sam over the length and breadth of the Free State, consequently, out of gratitude and appreciation for what this ticket is doing for our "favorite son" over the entire State, the least we can do is to carry this entire ticket for Sam in Frederick County. In effect, a vote for the Mahoney ticket will help Sam throughout the entire State of Maryland.

2. Do we owe a personal obligation and allegiance to Sam Barrick, as our "favorite son," to support the entire Mahoney ticket? The answer must obviously be in the affirmative. When, and it appears most likely, we will have the honor and distinction of the important office of Attorney General of Maryland being selected from one of the most loyal Democratic families in Frederick County (the S. W. Barrick family of Woodsboro, Md.), we should all put our shoulders to the wheel and gratefully support the Mahoney-Barrick-Lee, etc. ticket—the ticket that will not only bring honor and distinction to our "favorite son," but to our entire County!

I personally urge you to carefully consider these aspects of the forthcoming primary, and to display that type of loyalty which has been such a great source of pride to the Democratic Party of this County in the past.

Cordially yours,

EDWIN F. NIKIRK

Vote For
GEORGE P. MAHONEY



For Governor

"THINK OF THESE MEN - THEY THINK OF EMMITSBURG"

—Authority J. Norman Flax, Campaign Manager

GEORGE P. MAHONEY

Knickerbocker Building
 Baltimore, Md.

To The Citizens of Emmitsburg:

During the past decade or so I have had many occasions to visit your town. During these visits I have had numerous conversations with the townsfolk and through these talks I have become cognizant of many of your local problems.

I have made a personal inspection of the roads in your area. I have paid special attention to the stretches from the Mason-Dixon Line south to your town and from Emmitsburg to Taneytown. These highways are in a deplorable condition and are a disgrace to our fair state. There seems to be no excuse for the delay during the past several years of improvements to Route 15. The deadend at Toll Gate Hill and in the Catocin Furnace area are inexcusable in a modern highway.

Town Commissioner Flax has received a series of letters from the State Roads Commission. These letters were mere double-talk and mean nothing to Emmitsburg. This discriminatory action on the part of the Commission also is inexcusable. Emmitsburg deserves fair treatment the same as any other town in our state. If safety lights are paid for by the state, and other road repair, then why isn't Emmitsburg entitled to the same?

The present administration has completely overlooked the tremendous potential of the natural resources of Western Maryland and Emmitsburg. There are vast stretches of mountain and timberland in your area which could be developed by the State Parks Commission which would bring economic stability to your community, however exactly nothing has been done to develop this potential.

Yes, I am very familiar with the problems of your area and your efforts to cope with the great expansion problems confronting you by the growth of the two colleges there. I can assure you that if elected Governor I will devote time to assist you with your problems so that Emmitsburg can look forward to a brighter future.

Your most valuable assistance at the polls is needed if we are to work together for the betterment of Emmitsburg.

Most sincerely,

George P. Mahoney

VOTE THE STRAIGHT MAHONEY TICKET!

NOTICE OF PRIMARY ELECTION FOR FREDERICK COUNTY MARYLAND

In accordance with the provision of Article 33, Title "Elections" subtitle "Primary Elections" of the Annotated Code of Public General Laws of Maryland...

Places for holding the said Primary Election in the Respective Election Districts and Precincts of Frederick County, Maryland shall be as follows: Buckeystown District No. 1 Precinct No. 1—Methodist Church Educational Church Bldg., Buckeystown.

Emmitsburg District No. 5 Precinct No. 1—Fire Hall, Emmitsburg. Precinct No. 2—Town Office, Emmitsburg. Precinct No. 3—Parish Hall, St. Anthony's, Emmitsburg.

Precinct No. 3—Redding Chevrolet Garage, Thurmont. Jackson District No. 16 Fire Company Hall, Myersville. Johnsville District No. 17 Old School House, Johnsville.



ALL ABOUT BABIES...

A Public Service of the National Baby Care Council

By Mary K. Macdonald, R.N. Baby Care Counselor Collingswood, N. J. Diaper Hygiene: 6-12 Months

Six to 12 months of age is an important period in baby's life. At six months baby is expected to double his birth weight and at

12 months, triple it. He graduates to sit, creep and pull himself to his feet. He may be able to acquire "mama" and "daddy," wave bye and play pat-a-cake.

BIG VALUES AT THIS FAMILY PHARMACY

Whether it is a prescription or a staple item from our shelves, you will find every item fairly priced. Our courteous, competent service will appeal to every member of your household.



EMMITSBURG PHARMACY

Paul M. Carter, Pharmacist Phone HI 7-4821 Emmitsburg, Md.



FACSIMILES OF OF

Office of the Board of Supervisors of Elections of Frederick County, Court House, Frederick, Maryland, May 11, 1962

In compliance with provision of Article 33 title "Elections" of the Annotated Code of Public General Laws of Maryland, the Board of Supervisors of Elections of Frederick County, Maryland, herewith publishes the names of the several Candidates for nomination...

DEMOCRATIC OFFICES

Democratic Candidates

LINE A

Democratic Candidates

LINE B

Democratic Candidates

LINE C

REPUBLICAN OFFICES

Republican Candidates

LINE E

Republican Candidates

LINE F

Facsimile voting machine interface showing candidates for various offices including United States Senator, Governor, State Comptroller, Attorney General, and Representatives in Congress. Includes names like Daniel B. Brewster, Morgan L. Amadio, and William J. Gleason.

graduals of plain dust and dirt, in-
crease as baby wins the freedom
of the floor and the lawn. It is
so simple to keep every-
thing sterile that baby wants to
investigate. Here's one precau-
tion to keep in mind: should baby's
skin be invaded by a rash. To
help control the rash, sterilize the
diapers by boiling for 30 minutes.
Diapers processed by a diaper
service need not be boiled as they
do not contain germs or irritating
substances.

Remember, good diaper hygiene
to prevent diaper rash consists
of the use of correctly processed
diapers plus a fastidious diaper-
ing routine.

**Laurel Raceway
Opens Soon**

Adora's Dream and Leader Pick,
the two of the hottest blue ribbon
prospects in harness today, both
three-year-olds who will play to
rough Maryland race-goers during Laurel
Raceway's opening June 4 thru
June 30, have become the first horses
in the sport's history to be post-
poned as supplementary entries in the
Triple Messenger Stakes, \$165,000
first section of the Triple
Crown of Pacing, May 18 at
Roosevelt Raceway, Westbury, N.
Y.

Owner put up \$15,000 apiece
to get the colts in the contest
in hand both stand excellent chances
of landing a share of the loot.
Morris & Victor Zeinfeld of
Maywood, Ill., who purchased
Leader Pick for \$8,000 in June
1961, put up the \$15,000 for their
colt, but an "anonymous" owner
squared away the fee for Adora's
Dream after special arrangements
infected Herschel Quillen, Sr.,
breeder and owner of the bay colt,
and Canadian Morris MacDonald

who represented another horse-
owner who apparently believes in
Adora's Dream's ability.

Dick Hutchinson, President of
Laurel Raceway, was highly en-
thusiased over the announcement of
the colts' Messenger Stakes en-
tries and said he was planning
special rich overnight races for
Adora's Dream to compete in.
Hutchinson said owner Quillen and
Trainer Charlie Wingate earlier
informed him that the colt would
be stabled at Laurel Raceway
during the entire meet.

The son of Knight Dream-Adora
was undefeated in eleven starts as
a two-year-old in 1961, and banked
\$17,030.

Leader Pick won \$36,616 for
his juvenile efforts, turning the
trick with 7 victories and 8 place-
ments in 21 trips to the post. He
made his 1962 debut at Santa
Anita last month and triumphed
in a new individual record time
of 2:03.4. The Gene Abbe sopho-
more is in nomination for Laurel
Raceway's Reading Futurity for
three-year-old pacers, scheduled
June 30.

The Reading Futurities will
highlight the U. S. One harness
oval's 24-night meeting, with the
series of mile events taking the
spotlight every weekend through-
out the month.

Over 500 horses are in train-
ing now at Laurel Raceway, many
of which will see action at Rose-
croft Raceway which kicked off
the Maryland 96-night season on
Monday.

**Area Sewerage
Discussed**

James H. Grove, chairman of
The Frederick County Metropol-
itan District and Sanitary Com-
mission, announces receipt of ten-

tative plans formulated to allevi-
ate the existing unsatisfactory wa-
ter and sewerage conditions in the
Glade Valley area. The Glade Val-
ley Report is a detailed water and
sewerage survey of the area and
was compiled by the Benjamin E.
Beavin Co., a firm of professional
engineers specializing in the field
of water and sewerage systems,
whose office is located in Balti-
more. This is the first of a plan-
ned series of such reports to be
undertaken by the Sanitary Com-
mission in order to improve the
over-all water and sewerage condi-
tions throughout Frederick Coun-
ty. Mr. Grove emphasizes the need
to fully co-ordinate the Glade
Valley Report, when finalized,
with the appropriate city, county
and state authorities prior to its
public release. This action is vital
because each agency mentioned
above has an important and ap-
propriate part to play in any of
the proposed plans which may be

recommended by the Sanitary
Commission for implementation.
It can be disclosed that the re-
port was formulated with the view
that the Glade Valley Area is an
integral part of suburban Freder-
ick City. The facilities provided
under the plan appearing to offer
the greatest stimulus to the grow-
th of the area between the City
of Frederick and the Walkersville
area may initially or ultimately
form part of and serve other
Frederick suburban areas. This
project is only the start of long-
range plans to assure the orderly
development of water and sewer-
age facilities designed to insure
the growth, prosperity and health
of the entire Frederick County
Community.

The Frederick County Metro-
politan District Commissioners,
Mr. James H. Grove, Noah E. Ke-
fauver and Joseph M. Kline, all
of whom serve without pay, are
fully convinced that our commu-

nity growth is directly related to
the availability of adequate wa-
ter of good quality and satisfac-
tory sewerage systems, all inte-
grated to the maximum feasible
extent. However the Commission
realizes only too well that the
best-engineered plans are of lit-
tle value unless they are actively

supported by an intelligent, pro-
gressive and informed public.

The memory of the just survives
in Heaven.—William Wordsworth.
Books are the legacies that a
great genius leaves to mankind.—
Joseph Addison.

A taxpayer is one who does
not have to pass a civil service
exam in order to work for the
government.

LAWN - GARDEN SUPPLIES

Garden Tools - Sprinklers - Hose
Seeds - Plants - Fertilizers - Plant Foods
Lawn Mowers - Roto Tillers
Weed Killers - Peat Moss

GETTYSBURG HARDWARE

BALTIMORE STREET GETTYSBURG, PA.

HEAVY-DUTY shoes

In the field, feedlot, barn . . . anywhere . . . these
Star Brand Service Shoes are ready for every job
that comes along. Of the most durable leathers,
specially treated to resist acids, mud and water.
And they are comfortable all day long.

STAR BRAND SERVICE SHOES

\$12.99

Martin's Shoes Inc.
"The Place To Go For The Brands You Know"
BALTIMORE STREET GETTYSBURG, PA.

Remember MOTHER'S DAY

Whitman's
CHOCOLATES

So Fine
So Famous
So Sure
to Please

Whitman's
Sampler \$2.00 a lb.

THE FINEST BOX OF
CHOCOLATES IN THE WORLD

CROUSE'S
OPEN SUNDAYS
Phone HI 7-2211
Emmitsburg, Md.

OFFICIAL BALLOTS

All Judges of Election, who signed the return cards accepting appointments, are hereby notified to report at their respective voting places on Tuesday morning, May 15, 1962 at 6:00 A. M. (DST) at which time they will be sworn and commissioned by the Chief Judge of Elections.

The Board of Election Supervisors
For Frederick County, Maryland
LUTHER K. POWELL
STANLEY V. GAVER
G. HORTON PEACE, President

13 For County Commissioner (Vote for One)	14 For County Commissioner (Vote for Three)	15 For County Commissioner (Vote for Three)	16 For County Treasurer (Vote for One)	17 For Judge of the Orphans' Court (Vote for Three)	18 For Judge of the Orphans' Court (Vote for Three)	19 For Judge of the Orphans' Court (Vote for Three)	20 For State Central Committee (Vote for Seven)	21 For State Central Committee (Vote for Seven)	22 For State Central Committee (Vote for Seven)	23 For State Central Committee (Vote for Seven)	24 For State Central Committee (Vote for Seven)	25 For State Central Committee (Vote for Seven)	26 For State Central Committee (Vote for Seven)
13 A DEMOCRATIC Norvell BELT	14 A DEMOCRATIC John N. BOWERS	15 A DEMOCRATIC C. Burton CANNON, JR.	16 A DEMOCRATIC Charles B. FLEET	17 A DEMOCRATIC Percival H. BEAVERS	18 A DEMOCRATIC Mary H. GREGORY	19 A DEMOCRATIC Caroline F. R. McGILL	20 A DEMOCRATIC George F. ABRECHT	21 A DEMOCRATIC Earl W. BARTGIS	22 A DEMOCRATIC Alton Y. BENNETT	23 A DEMOCRATIC Louise E. FRALEY	24 A DEMOCRATIC Ruby V. HAHN	25 A DEMOCRATIC George E. HAMILTON	26 A DEMOCRATIC Harry E. HIMES
13 B DEMOCRATIC Lawrence A. DORSEY	14 B DEMOCRATIC Carroll H. KEHNE	15 B DEMOCRATIC A. Irvin RENN	16 B DEMOCRATIC Donald A. WOODS	17 B DEMOCRATIC Howard Z. STUP			20 B DEMOCRATIC Marshall H. LEATHERMAN	21 B DEMOCRATIC Austin C. POWELL	22 B DEMOCRATIC G. Raymond SHIPLEY	23 B DEMOCRATIC Edward D. STORM			
			16 C DEMOCRATIC Charlotte W. YARROLL										
13 E REPUBLICAN Russell Z. HORMAN	14 E REPUBLICAN George R. LANTZ	15 E REPUBLICAN Daniel B. SMITH					20 E REPUBLICAN David H. BROWN	21 E REPUBLICAN Hilda B. CROGHAN	22 E REPUBLICAN William B. CRUM	23 E REPUBLICAN James F. CUPINO	24 E REPUBLICAN Grayson DOUB	25 E REPUBLICAN E. Hart EICHSON	26 E REPUBLICAN Willard C. KOOGLER
13 F REPUBLICAN Charles P. STONEY	14 F REPUBLICAN Samuel H. YOUNG	15 F REPUBLICAN Harry A. ZERTZ					20 F REPUBLICAN Kenneth T. LAYMAN	21 F REPUBLICAN Rondel K. LEGORE	22 F REPUBLICAN Edgar B. PALMER	23 F REPUBLICAN Mehrl F. WACHTER			

Norvell Belt

For COMMISSIONER

Put SENSE in the Commissioners' Office and CENTS in your pocket! Vote for NORVELL BELT in this Democratic Primary May 15 for County Commissioner!

BABSON

Writes . . .

BY ROGER W. BABSON
Babson Discusses Investing Vs. Gambling
BABSON PARK, Mass., May 10—I have spent the day read-

ing a remarkable book—"THE PICTORIAL HISTORY OF WALL STREET"—368 pages size 12"x9". This history shows clearly that the fundamental facts underlying investing during the past decades apply equally today. (This is an anniversary of the New York Stock Exchange founded just 170 years ago.) Let me describe ten facts.

(1) Safety and income come from careful selection and supervision of your investments. Profits come usually from "gambling"; although your total investment will rise and decline in "value" along with the Dow-Jones Averages. But big profits come from buying into new ideas, new discoveries, and

scientific developments. To make big money, read scientific journals** rather than ordinary financial news.

(2) Newton's Law of Equal and Opposite Reaction can be depended upon when the AREAS involved are properly considered. This was first noticeable when African slaves and gold were the only "commodities" traded on Wall Street 200 years ago. I believe that we will continue to have periods of Decline and Depression during the next few years. Congress can legislate only to temporarily postpone declines; but cannot but change the AREAS involved.

(3) A study of Wall Street history during the past 170 years shows that dips in the stock market have always come unexpectedly, without warning. This was true when slaves, gold, or stocks were selling abnormally high—as at present. Such bear markets have always followed great wars, from Napoleonic Days through World War I. No such bear market has yet occurred following World War II. The D-J Industrial Average was around 100 in 1942 and has since climbed fairly steadily upward, standing around 670 today.

(4) Special groups of stocks have acted differently during the past 150 years. The demand for slaves and land declined from 1860-65 while the demand for gold and railroad stocks was very active. Then, being over-popularized—as the electronics and space stocks are today—they had a terrible slump with most if the companies going into receivership. Most of the stocks in the same group suffer more or less together; but different groups can act very differently.

(5) Bonds—other than governments—were almost nonexistent until 75 years ago when corporation bonds began to be issued. A study of quotations shows that the bond market is usually going down when the stock market is going up. Careful investors will hold both stocks and bonds in a proportion varying according to conditions. For instance, good corporation bonds can now be bought to yield 4½% while the stocks of the same corporations will yield today 3% or less. Hence, the switching of stocks into bonds has now begun on Wall Street and it will continue until the stock yield equals the bond yield.

(6) Naturally, everyone who knows Wall Street will advise diversification of all kinds. Don't put all your money in stocks or bonds. Real estate can be bought in the Central West and South West at \$75 per acre. One must pay more to get land in an oil or mineral "terrain." There never will be any more land. If you can get enough rent for pasture rights to pay taxes, buy such land.

When buying land, be willing to pay for adjoining fresh water. Someday fresh water in quantity will almost be "liquid gold!"

I believe in African gold stocks—also good Mutual Funds and especially insured savings to pay 4½%. I once asked Thomas A. Edison who was the greatest inventor. He replied "The man who invented compound interest". The lower Manhattan Island—with Wall Street later its center—was bought from the Indians for a few trinkets valued at \$24.00. If the Indians had taken the cash and invested it at 6% interest, compounded quarterly, this \$24.00 would today amount to around sixteen billion dollars. So don't forget the great power of compound interest even if the bonds yield you only 4½%.

(7) Seek the professional opinion of investment advisers who have been in business over fifty years and have made mon-

ey for their clients. Tell your adviser that you want to diversify according to the basic fundamentals—but that you are willing to do some "gambling" by buying now into companies which may have a big future.

(8) Keep in good health—do not worry. Unless your health is good your judgment cannot be good. You do not need capital or a college diploma to "gamble" successfully; but you (Continued on Page Three)

Penny Bingo

SATURDAY, MAY 19, 1962

7:30 P. M.

Sponsored By

GREENMOUNT COMMUNITY FIRE COMPANY LADIES' AUXILIARY

Many Nice Prizes — Door Prize — PUBLIC INVITED—



BURPEE'S SEEDS

GARDEN SEEDS
GARDEN FERTILIZER
LAWN SPREADERS
SEED SOWERS
HOES, SHOVELS, TOOLS
POWER LAWN MOWERS
FISHING LICENSES & TACKLE
ZURGABLE BROTHERS
FEED & FARM SUPPLIES
PHONE HI 7-5051 EMMITSBURG, MD.

SPECIALS

NIFTY CARS — THRIFTY PRICES

- '62 Corvair Monza 2-Dr.2395
- '62 Falcon 2-Dr.1995
- '61 Chevy "6" 4-Dr.1995
- '61 Ford Fairlane 500 8 4-D 1895
- '61 Plymouth "6" 2-Dr.1595
- '60 Falcon Deluxe 4-Dr.1595
- '60 Chevy "6" 2-Dr.1495
- '60 Ford "6" 2-Dr.1495
- '60 Valiant "6" 4-Dr.1395
- '59 Ford Convert. New Top...1795
- '59 Pontiac 4-Dr. Catalina ...1795
- '59 Olds "88" 2-Dr. H-top...1795
- '59 Chevy Belair '8' 4-Dr.1495
- '58 Chevy ¼-ton Pickup1095
- '57 Buick Sup. 4-Dr. H-Top... 995
- '55 Chevy 4-Dr. Needs a little body work 195
- '53 Rambler 2-Dr. 99
- '50 Chev. Sedan Deliv. 29

ZENTZ AUTO SALES

"Since 1944"
CARROLL M. ZENTZ
Carlisle St. Opposite Varsity Din.
Phone EDgewood 4-6116
Open Daily 9 a. m. - 9 p. m.

RUSSELL Z. HORMAN

CANDIDATE FOR OFFICE OF

COUNTY COMMISSIONER

- CONSCIENTIOUS
- EXPERIENCED
- QUALIFIED



Farming
23 years as supervisor of cream buying
Trucking business
Construction contractor
Garage and machinery dealer
Real estate broker past ten years
Member of: Farm Bureau; Carroll Manor Grange; Fish and Game Protective Association; Carroll Manor Fire Company; Chamber of Commerce; Board of Realtors of Frederick County; Maryland Real Estate Association Inc; The National Association of Real Estate Boards

Born on farm near Urbana in 1908, married to Helen Virginia Thomas and father of three sons. Substantial property owner and taxpayer.

VOTE for RUSSELL Z. HORMAN—Republican Primary
May 15th for the important office of COUNTY COMMISSIONER

This important office needs conscientious, qualified representation—your vote and support will be deeply appreciated.

FREE - FREE - FREE - FREE

AN OPEN INVITATION TO ALL DEMOCRATS OF FREDERICK COUNTY

(No Special Guests - No Special Invitation Required)

Grand Primary Rally

GIVEN BY THE
MAHONEY TICKET WORKERS OF FREDERICK CO.
AT THE FREDERICK FAIRGROUNDS

SATURDAY, MAY 12—3 TO 6 P. M.

RAIN OR SHINE

FREE FOOD — REFRESHMENTS — ENTERTAINMENT

Bring the Family and Meet

GEORGE P. MAHONEY

And His Entire Ticket

FREE - FREE - FREE - FREE

VOTE BLAIR LEE

FOR
U. S. SENATOR



Seated (L to R): Jenny, Blair Lee III, Philip, Mimi, Johnny, Freddy
Standing (L to R): Pete, Blair IV, Christopher and Joey

A RELIABLE FAMILY MAN
AN EXPERIENCED LEGISLATOR
A KENNEDY DEMOCRAT

VOTE THE MAHONEY — LEE — SICKLES — BARRICK — LEVIN TICKET

DEMOCRATIC
PRIMARY

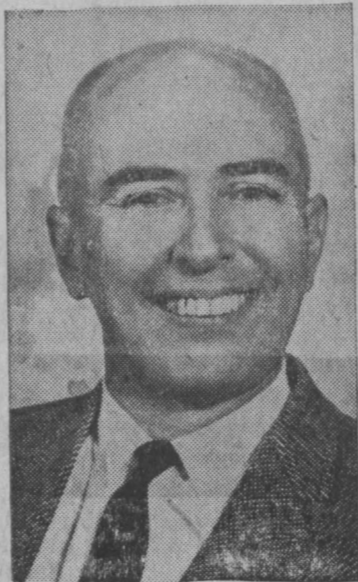
MAY 15

Authority
JOHN W. NEUMANN
Treas.



EMMITSBURG — THURMONT

ELECT
EDGAR B.
PALMER



TO THE
Republican State
Central Committee

WINE SECTION



DRIVE - IN AND DELIVERY SERVICE

Village Liquors

"Always in the Best of Spirits"

Ralph F. Irelan, Prop.

Phone 7-3271 Drive-In Service Emmitsburg, Md.

AWARDED GRANT
William G. Meredith, assistant professor of biology at Mt. St. Mary's College, has been awarded a National Science Foundation grant to attend the Summer In-

stitute at Arizona State University, Tempe, Ariz. The institute will last for six weeks beginning June 25 and ending August 4. It will include lectures and seminars on the adaptations of plants and

animals to desert conditions with field trips to different desert habitats each week.
Mr. Meredith graduated from Fairmont State College, Fairmont, W. Va., in 1955 with a bachelor of

arts degree and from West Virginia University, Morgantown, W. Va., in 1957 with a master of science degree in zoology. He is presently studying for his doctorate at the University of Maryland.

Mr. Meredith is married and has two children. His family will

accompany him to Arizona this summer. This is the third grant that he has received. In 1960 he attended the Summer Institute for

College Teachers of Animal Ecology at the University of Colorado in Boulder. Last summer he studied at the Summer Insti-

tute for College Teachers of Genetics at North Carolina State College in Raleigh.

DUDASH'S 66

Service Station

PAUL DUDASH, Prop.

ATOP TOLL GATE HILL

ANNOUNCES THE FIRST OF A SERIES OF SUMMER SPECIALS

THIS WEEK 79c BAG OF CHARCOAL

59c

WITH 10 GAL. GAS PURCHASE OR LUBRICATION

WATCH FOR GRAND OPENING

MAJESTIC

Now Thru Sat. May 12

WALT DISNEY'S

"MOON PILOT"

In Color

Sun.-Mon. May 13-14

RAY MILLAND

"THE PREMATURE

BURIAL"

In Color

Tue. Only May 15

HENRY JAMES

FONDA CAGNEY

"MR. ROBERTS"

Wed.-Sat. May 16-19

"STATE FAIR"

—SOON—

"OCEAN'S ELEVEN"

"CAPE FEAR"

KEEP TAWES

MARYLAND'S GOVERNMENT
SOUND, HONEST EFFICIENT!

ACTION
TICKET

ON MAY 15th - VOTE FOR

(FREDERICK COUNTY BALLOT)

3C

GOVERNOR
J. MILLARD
TAWES

1A

U. S. SENATE
DANIEL B.
BREWSTER

6A

COMPTROLLER
LOUIS L.
GOLDSTEIN

7B

ATTORNEY GENERAL
THOMAS B.
FINAN

8C

CONGRESSMAN AT LARGE
PERRY O.
WILKINSON

TO RECORD VOTES
PULL LEVERS DOWN AND LEAVE DOWN
POLLS OPEN 7 A. M. — CLOSE 7 P. M.

BY AUTHORITY OF HERBERT R. O'CONNOR, JR., CHAIRMAN

RE-ELECT TAWES!

CITIZENS FOR TAWES

- Mr. & Mrs. Aaron Adams
- Mrs. Oscar Stinson
- Mr. and Mrs. Lumen Norris
- Mr. and Mrs. Guy A. Baker Jr.
- Mr. and Mrs. Frank Topper
- Mrs. William Cadle
- Mr. and Mrs. William Topper
- Mr. Roger Adams
- Mr. and Mrs. B. H. Boyle
- Mr. and Mrs. Allen Bouey
- Mrs. Clyde Eyler
- Mrs. Raymond Baker
- Mr. and Mrs. Roger Zurgable
- Mr. and Mrs. George Baker
- Dr. and Mrs. John J. Dillon
- Mrs. Rita Remavege
- Miss Eileen Norris
- Mr. and Mrs. Wales Rightnour
- Mrs. William Rowe
- Miss Ruth Shuff
- Mr. and Mrs. Leo M. Boyle
- Mr. and Mrs. Richard Sprankle
- Mr. Patrick Boyle
- Prof. and Mrs. Dominic Greco
- Mr. C. C. Combs
- Mr. and Mrs. Robert Koontz
- Mr. and Mrs. Joseph Sullivan



- Mrs. Ralph Keilholtz
- Mrs. Clarence Frailey
- Miss Ann Codori
- Mrs. Valerie Overman
- Mr. and Mrs. Thos. Harbaugh
- Mr. and Mrs. Curtis Topper
- Mr. Allen Kreitz
- Mr. and Mrs. Eugene Myers
- Mr. and Mrs. Michael Topper
- Mr. and Mrs. J. L. Orendorff
- Mr. and Mrs. R. B. Florence
- Miss Loretta Florence
- Mr. Edward Myers
- Mr. and Mrs. Austin Joy
- Mrs. Andrew Keilholtz
- Mr. and Mrs. Jos. Shoemaker
- Mrs. M. F. Shuff
- Mrs. James Phelan
- Mr. and Mrs. Edward Seltzer
- Mrs. Leone McNair
- Mr. and Mrs. Daniel Lind
- Mr. and Mrs. Louis Kreitz
- Mr. and Mrs. Lloyd Fisher
- Mrs. Marie G. Kreitz
- Mr. and Mrs. Felix Hemler
- Mr. and Mrs. J. M. Roddy Sr.
- Mr. and Mrs. Edward Kreitz

Pictured above is Governor J. Millard Tawes congratulating J. Allen Bouey on his recent election as Mayor of Emmitsburg. While we have been fully aware of the statewide issues in this election and the outstanding accomplishments of the Tawes administration in the savings and loan regulatory laws, court reform laws, etc., we feel that the people of Emmitsburg are mainly interested in what Tawes has done for Emmitsburg. The matching state grant of \$500,000 to Mount St. Mary's College for a new Science Building will benefit the people of Emmitsburg in many ways but more particularly will benefit those young men who will attend the college in years to come.

In discussing with Mr. Bouey the needs of our community, Mr. Tawes has signified his willingness to assist us in every way possible. Just this week Mr. Bouey received a letter from Mr. Funk of the State Roads Commission advising him that at a meeting of the full Commission it has been decided to resurface, with blacktop, Routes 15 and 97 in Emmitsburg. This work is now awaiting completion and the Mayor has been assured that this work will be performed by the Commission during this present season. Mr. Owens of the Commission visited Emmitsburg this week to tour the streets with Mr. Bouey to determine what should be included in this project.

We, the Citizens for Tawes in the Emmitsburg area, feel that in the interest of good government for our state and for the benefit of our community, every registered Democrat will perform a service to all by casting his ballot for J. Millard Tawes to return him to the Governorship of Maryland for another term.

In addition to these local developments, we feel that the following provisions for Frederick County are worthy of mention also during the Tawes administration: \$2,884,892 for Frederick County Schools; \$10,790 for Frederick County Libraries; \$2,257,445 for 18 highway systems in Frederick County; \$528,444 for Public Health in Frederick County; \$425,620 for our Frederick County Farms in soil conservation, extension education, mosquito control and livestock sanitary services; \$1,947,950 for the development of Cunningham Falls State Park, Gathland State Park, South Mountain and Catoclin Watershed, and Maryland School for the Deaf. This money used in making Frederick County a better place to live and work would have cost the taxpayers of Frederick County an increase in tax rate of 13c.

.. Authority of GUY A. BAKER, JR.

Licenses Revoked
 The State Dept. of Motor Vehicles this week announced the revocation of the driving license of Harold L. Weddle, R1, Thurmont and James W. Smith, also o Thurmont. At the same time the Dept. reported it had suspended the licenses of Robert Lee Downes, Thurmont, and William

son E. Snyder, Emmitsburg.
 The Anableps is a "four-eyed" fish living in Central America. Its eyes are divided, the lower section permitting underwater vision and the upper part serving to see objects in the air. But without eyelids to moisten the upper part, Anableps must keep ducking

its head.—Sports Afield.

With civilization crowding in, and around airports and a liability blackbirds and gulls can be a hazard to agriculture. Direct control

is costly, offensive and not always effective. A new hope for population reduction now centers on chemical sterilants.—Sports Afield.

To Maryland Democrats
Do You Want A Full-Time Senator?
Do You Want A Senatorial Nominee Who Will Keep His Promises?
Do You Want A Nominee Who Can Win In The General Election?
IF YOUR ANSWERS ARE "YES" —
VOTE FOR ELBERT BYRD
U. S. SENATOR
 Auth: Wm. Buckley, Treas.



ATTENTION!
Members of the
Gettysburg Moose



—FREE PRIZE GAME EVERY FRIDAY NIGHT—
 Free Prizes Awarded — Come in and Win!
DANCE THIS SATURDAY NIGHT
 "PAT" PATTERSON'S ORCHESTRA
 —Entertainment and Floor Show—
 Will Groff Theatrical Agency, York, Pa.

New Forest Park, Hanover, Pa.

SATURDAY, MAY 12—DAY & NIGHT
YORK COUNTY SCHOOL DAY
 Free Bakers Pretzels, Free Soft Drinks, Free Gifts, Free Rides, Skating
 Watch this paper for your Free School Tickets
 SUNDAY, MAY 13—Dicks Record Hop—In the Bandshell Contest & Prizes—Hear your Favorite Records
 Hold Your Picnic Here. Phone ME 3-5286

M G THEATER
 EMMITSBURG, MD.

Adults 60c — Children 30c
 Now Under Local Management
 Thursday Shows: 7 & 9 P. M.
 Friday Shows: 7 & 9 P. M.
 Saturday Shows: 7 & 9 P. M.
 Sunday Show at 8 P. M. Only

Friday May 11
BOB HOPE
LUCILLE BALL
 In
"THE FACTS OF LIFE"

Sat.-Sun. May 12-13
WALT DISNEY'S
"PINOCCHIO"
 In Color

Thur.-Fri. May 17-18
LAURENCE HARVEY
GERALDINE PAGE
 In
"SUMMER AND SMOKE"
 In Color

—COMING SOON—
"TWINKLE AND SHINE"
"THE YOUNG DOCTORS"
"POCKETFULL OF MIRACLES"



DEMOCRATS

VOTE FOR

CHARLOTTE
WHITMORE
YARROLL

FOR

County Treasurer

ON MAY 15, 1962

My experience during the past twenty-two years as Deputy Treasurer to the late James H. Falk, whom I succeeded in 1960 as County Treasurer has qualified me to operate the office with efficiency and dispatch.

Under my continued administration the cost of operation will be kept at a minimum.

I solicit your vote for the continued economical operation of the office of County Treasurer.

RE-ELECT

Merhl F. Wachter

to the

REPUBLICAN STATE
CENTRAL COMMITTEE

One of the originators and now the Finance chairman of Republican Permanent Headquarters of Frederick County, by pulling Lever F-23, last name on last line of voting machine.

DON'T MISS OUR BIG
29th ANNIVERSARY SALE
FREE DOOR PRIZES
 Kounty Kist Peas 7 303 cans \$1.00
 Blue Ribbon Margarine 6 1-lb. qtrs. \$1.00
 Seamless Nylons 2 pairs \$1.59
 Instant Maxwell House Coffee 6-oz. jar 69c
 Smoked Ham whole or half, lb. 47c
 Pillow Toilet Tissue 12 rolls 89c
 5c Off Can Crisco 3-lb. can 85c
BIG FROZEN FOOD SPECIAL!
 FILL YOUR FREEZER
B. H. BOYLE
 Phone HI 7-4111 Emmitsburg, Md.

GOING OUT OF BUSINESS SALE

1 LOT LADIES' SHOES
 \$1.00 Pair
SWIMWEAR
HALF PRICE
PLAYTEX - STARDUST
BIFLEX - BRAS
 Reg. Sale
 \$1.00—82c
 \$1.50—99c
 \$2.50—1.88
 \$3.50—2.10
 \$3.95—2.55
 \$5.95—3.44
LADIES' SLACKS
 Reg. Sale
 \$1.98—\$1.33
 \$2.29—\$1.55
 \$2.95—\$2.10
 \$3.95 up—\$2.99
CHILDREN'S PJ's
 Sizes 1 to 16
All \$1.44
JAMAICA'S
 Sizes 10 to 18
97c & \$1.44

Ladies'
HALF SLIPS
 All Sizes & Colors
66c each
CANNON HOSE
 Seamless
87c
FRUIT OF THE LOOM
PANTIES
 Ladies Reg. 59c, now 47c
 Children's 3 for 82c—4 for 82c
BLOUSES & SKIRTS
BIG REDUCTIONS
Panties & Undershirts
 Sizes 2 to 16
24c Pair
GREETING CARDS
HALF PRICE

ENDICOTT JOHNSON
 —SHAW—
 —PETERMAN—
 —HERMAN—
 —MOTHER GOOSE—
 —RED WING—
SHOE PRICES
MEN'S, LADIES', CHILDREN'S

Reg. Price	Sale Price
2.95	2.10
3.95	2.88
4.95	3.33
5.95	4.22
6.95	4.77
7.95	5.55
8.95	6.22
9.95	6.77
10.95	7.55
11.95	8.22
12.95	8.77
13.00 up	9.00

BUSTER BROWN KNITWEAR—REDUCED
ALL SEWING NEEDS HALF PRICE!

CHAMP HATS
All \$5.99
 Reg. \$9.95 & 10.95
LEE RIDER
DUNGAREES
\$2.80 Pr.
 Short-Sleeve
SPORT SHIRTS
\$1.66
 School
SWEATSHIRTS
 Reg. \$2.95 - Sale \$1.33
 EHS & SJHS
BELTS
 Reg. \$1.50—Sale 99c
SCHOOL JACKETS
 Reg. \$11.95—Sale \$7.99

1 LOT OF MEN'S
DRESS SHOES
HALF PRICE
ALL MEN'S
DRESS PANTS
 Reduced to Cost or Below Cost
1 Lot \$2 Pr.
HANES UNDERWEAR
20% OFF
 Boys' Long-Sleeve
SPORT SHIRTS
 Sizes 4 to 20
All \$1.66
TENNIS SHOES
 Reg. \$3.95—Sale \$2.66
PLAY SHORTS
 Sizes 2-4-6-8
25c Pr.
5 Pairs for \$1.00

HOUCK'S

EVERYTHING PRICED TO SELL—CLOTHING, SHOES, GIFTS—EVERYTHING FOR THE FAMILY!
 MANY, MANY MORE ITEMS TO LOOK OVER—ALL PRICED TO SELL!

EMMITSBURG, MARYLAND PHONE HI 7-3811 ALL SALES FINAL—NO REFUNDS OR EXCHANGES—NO CHARGE ACCOUNTS OR LAY-A-WAY!

Mount Senior Receives Fellowship

Mr. Charles E. Robinson, Senior English major at Mount Saint Mary's College, Emmitsburg, Md., has been named the recipient of a Fulbright Fellowship by the United States State Department. Mr. Robinson's grant is for a teaching assistant ship to India for the academic year beginning June 1962. The government grant covers complete tuition, transportation, books, and incidentals allowance plus 7,600 rupees for maintenance.

Mr. Robinson will leave from New York City by Trans World Airways on June 12. He will receive an orientation program at Hyderabad, India, before being sent to his teaching assignment.

Mr. Robinson is the son of Mr. and Mrs. Charles E. Robinson, 1204 College Park, Fairmont, W. Va. While attending the Mount, he has been very active in extra-curricular activities serving as President of the Student Government, president of the Junior Class, member of the dramatic society, the college newspaper, the League of the Sacred Heart.

He is a senior honor student with a scholastic average of 96.1, and has been named to Who's Who in American Colleges and Universities, the Delta Epsilon National Catholic Honor Society, and the College's Monsignor Tierney Honor Society. In addition to the Fulbright award, he also has been selected for an Andrew Mellon Fellowship to the University of Pittsburgh, a non-resident scholarship to the University of Wisconsin, and a National Defense Educational Fellowship, to Temple University.

A banker says a college education set a man back three or four years. Why speak vaguely of "a man"? Why not come out frankly, and say "Father"?—The Detroit News.

If you want it to be a short summer, just sign a 90-day note.

EVEN MORE FUN THAN EVER AT THE ENCHANTED FOREST

Ride a giant teacup into Alice in Wonderland's underground episodes. The whole family will be thrilled by the many creations and rides at this fairy-land park. Open daily from 10 a.m. 'til dark.

SNACK BAR - PICNIC AREA
Plenty of Parking Space
15 Mi. West of Baltimore, Md. on ROUTE 40
Private Birthday Parties catered in the Gingerbread House.
Phone: HOWARD 5-0707 ELLICOTT CITY, MD.

Sea gulls have specialized glands able them to extract salt from located above the eyes which en- seat water.—Sports Afield.

Business Services

PATRONIZE our Advertisers. They are reliable and have proven through years that they handle only quality products and offer skilled professional advice and service to their patrons.

WILSON Funeral Home
EMMITSBURG, MD.
Phones:
Emmitsburg HI 7-4621
Fairfield 642-8642

DR. R. P. KLINGER, JR.
Optometrist
19 East Main Street
EMMITSBURG, MD.
Eyes Examined - Glasses Fitted
Complete Optical Repairs
HOURS
MONDAY: 6:30 p.m. to 8:30 p.m.
Other Evenings By Appointment
PHONES
EMMITSBURG HI 7-5191
WESTMINSTER TI 8-8340

**Dr. D. L. Beegle
Dr. John Beegle**
CHIROPRACTORS
Emmitsburg, Md.

Fast and Dependable
Prescription Service
Accuracy
Comes First
Your Rexall Drug Store
Peoples Drug Store
York Street, Gettysburg

ANNIVERSARY SPECIAL
Regular \$15.00 Olive Oil Perm now \$10.50
Can of Olive Oil hair spray (value 2.50) free—Limited time.
Dian's Beauty Shop
Dian Small, Owner
HI 7-2353
Closed Mondays

RE-ELECT
FOR JUDGE OF ORPHANS COURT
Subject To Democratic Primary, May 15
MARY H. GREGORY
(Widow of C. W. Gregory)
Experienced and Sympathetic Service

Your Vote Appreciated
to Re-elect
RUBY V. HAHN
(MRS. JIM)
DEMOCRATIC CANDIDATE FOR
STATE CENTRAL COMMITTEE
"A Candidate for the People"
PRIMARY ELECTION
MAY 15, 1962

Vote For
DAVID DEGENCY
HUME HONOR
FOR GOVERNOR GREATNESS
Authority Thomas R. Bowling, treas.

ELECT
HARRY A. ZENTZ
FOR
COUNTY COMMISSIONER
Subject To
Republican Primary
May 15
Your Support and Influence Greatly Appreciated
Published by Authority of Candidate

ROSE DUST
FOOD and SPRAY
By Du Pont - Miller's and Scotts
For Better Roses Use Scotts
Rose Program
Save \$5.00 Uow On Scotts
Zephyr Duster
Sprayers and Dusters All Sizes
REDDING'S
30 YORK STREET GETTYSBURG
We Give S&H Green Stamps

SUMMER CHECKUP
Your car has endured a tough winter. Let us drain your radiator, add fresh water, change to summer oil and lubricate.
COMPLETE LINE OF
ATLAS TIRES and BATTERIES
KEEPERS ESSO STATION
Charles E. Keepers, Prop.
EMMITSBURG MARYLAND

VOTE FOR
LOUISE E. FRALEY
(Mrs. Frank Fraley)
My past service to the people & Democratic party on the State Central Committee speaks for itself. With your continued support I will be happy to serve for another four years.

? ? ? ?
Have You Thought About ...
MOTHER
MARVELOUS selections . . . from a wallet to a complete summer wardrobe.
NE stop for all the famous names in fashion. . .
ISN'T hard to find the perfect gift . . . whether she be nineteen or ninety.
EAVENLY lingerie, handbags galore, gloves, jewelry . . . the smartest of blouses, skirts, sweaters . . . are just a few of the gift items sure to please.
ASY does it . . . shopping is a cinch with a fine staff to help you and Free Gift Wrapping.
EMBER . . . we aim to please. If you goof (you swear she's a 12 when she's really a 20) we will gladly make the exchange.
MOTHER'S DAY SUNDAY MAY 13
FREE GIFT WRAPPING
TOBEY'S
OF GETTYSBURG
Open Friday and Saturday Evenings Till 9 O'clock

SHOP THOMPSON'S
presents to please
MOTHER
Hundreds of Lovely
NEW RAYON or COTTON
Dresses
at these unusual low prices
\$5.98 to \$10.98
Ladies' Hose \$1.00
Mother's Day GIFT ITEMS at LOW PRICES!
VERY SPECIAL 4 Gore Plisse Ladies' Cotton SLIPS \$1.98
White Fabric \$1.00
New Summer BAGS \$1.00
In Fine Quality NYLON or COTTON \$1.98
in finest plastic materials — also straws — Small clutch or regular large styles. \$2.98
THOMPSON'S
28 BALTIMORE STREET GETTYSBURG, PA.
Open Friday and Saturday Evenings Till 9 O'clock

2500 Attend

Parents Day Weekend

Mount Saint Mary's College was host to over 2500 persons at its annual Parents Day Weekend which was held Saturday and Sunday, May 5 and 6. The parents, students, alumni, and friends in attendance were officially welcomed to the college campus by Mt. Rev. Robert R. Kline, Ph.D., at the Solemn High Mass that

was celebrated in the Chapel of the Immaculate Conception. Following the text of the parable of the Good Shepherd, Monsignor Kline extended the analogy to the ideal of the small college environment. He said that as the good shepherd lays down his life for his sheep so too the small college seeks to care for each of its students by providing for their individual differences through small classes, personal contact with members of the adminis-

tration and faculty, and by providing a home-like atmosphere and parental control. He further stated that at Mount Saint Mary's College this is done by following the Christian principles of the first Good Shepherd. His remarks were concluded with an invitation to those present to avail themselves of the opportunity to visit the new buildings on the Mount campus which are a part of the \$3,000,000 development program now under-way.

Pimlico Offers

Preakness Special

The Maryland Jockey Club will again open its huge infield to the public for \$1 a person on Saturday, May 19 for the eighty-sixth running of the \$150,000-added Preakness at Pimlico. Offering the best bargain in

horse racing, Pimlico executive director Louis Pondfield said: "The entire infield will be in use to accommodate the thousands of racegoers in this area who like to make Preakness Day a family outing. Complete wagering, catering and restroom facilities will be open with all the conveniences of the grandstand side of the track at a nominal price."

A special infield entrance will facilitate entry and make it unnecessary for patrons to cross the track. The entrance is off Pimlico Road, directly adjacent to the main grandstand parking lot. Picnics are the order of the day during Preakness afternoon and to this end, the twenty-eight acre infield will be liberally

sprinkled with umbrella-sheltered tables. In recent years, individual groups have staged private parties in large tents, continental style, their members sporting morning coats and English shooting-sticks. Gates open on Preakness morning at 10 o'clock, including the special infield entrance across from the parking lot.

ATTENTION BOWLERS!

BOWL DOWN CANCER!

A percentage of all receipts of all games rolled at the

Emmitsburg Recreation Center

FRIDAY — SATURDAY — SUNDAY

will be turned over to the Cancer Fund! Come in and roll a game and help fight this disastrous disease.

Hours: 1-11 Each Day

C. A. HARNER, Prop.

Following the Msas, the guests were served a barbecued chicken dinner at the Memorial Gymnasium. The College Band under the direction of F. Edmond Lynch, senior from Wilmington, Del., added the flavor of an old-time band concert. Faculty members were on hand to meet informally with the parents and guests.

The Day was closed with Benediction of the Most Blessed Sacrament at the National Shrine of Our Lady of Lourdes with Rt. Rev. George D. Mulcahy, rector of Mount Saint Mary's Seminary, as celebrant. Monsignor Mulcahy recently published a complete history of the shrine of which he is an authority.

Announce Birth

Mr. and Mrs. Marion Capezio, Baltimore, announce the birth of their second child and second son. Mrs. Capezio is the former Miss Theodora Rybikowsky, daughter of Mrs. Regina Rybikowsky, Emmitsburg.

Walk Out Weeds In 30 Minutes With

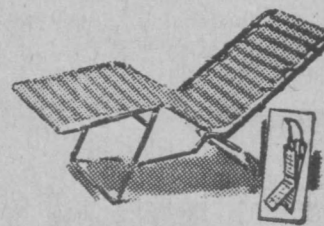
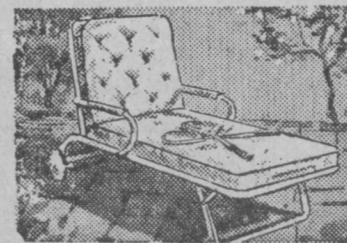
SCOTT'S BONUS

Weed and Feed Nonburning — Dry — Clean Knocks Out Ugly Weeds Like Dandelion Plantain - Buck Thorn and Feeds Your Grass With a Steady, Protein-building Diet THE TIME FOR BONUS IS NOW

GEO. M. ZERFING HARDWARE, INC.

Gettysburg

Tillettown



SUMMER FURNITURE

GLIDERS FOLDING CHAIRS CHAISE LOUNGES PORCH SHADES

UMBRELLAS TABLES RATTAN CHAIRS WROUGHT IRON

WENTZ'S

BALTIMORE STREET

GETTYSBURG, PA.

"Back The Attack On Traffic Accidents"

"Make Safety A Habit"

HULL'S T. V. & APPLIANCES

Kelvinator - Johnson - Seahorse Outboard Motors

CHESTLINER & LONE STAR BOATS

Philco - Motorola - Dumont - Sylvania - RCA Sales-Service BLUE RIDGE SUMMIT, PA. PHONE 563

"Safe Drivers Drive Safe Vehicles"

Warren Buick & Chevrolet Sales

Best Equipped - Most Modern Service Facility

49 Years of Service

LINCOLN WAY EAST — GETTYSBURG, PA.

EDgewood 4-3191 or ED 4-3011

"Kids Love Life—Drive Lovingly"

JOHN H. WALTER

CONTRACTOR

FORMSTONE & STUCCOING

EMMITSBURG, MD. — HI 7-3031

"Safe Drivers Drive Safe Cars"

L. & B. SERVICE CENTER

SPECIALIZING IN ALL REPAIRING

Mobil Oil — Gas — Accessories

THURMONT, MD.—PHONE CR 1-5301

"Safe Drivers Drive Safe Vehicles"

ESSO GAS & OIL—LEE TIRES

SANDERS GARAGE

Auto Sales & Service

Gettysburg Road—HI 7-3451

EMMITSBURG, MD.

"Safety Begins in the Home"

WEISHAAR BROS.

Plumbing - Heating - Air Conditioning

SALES & SERVICE

MAYTAG & SYLVANIA

37 BALTIMORE ST., GETTYSBURG, PA.

Phone EDgewood 4-1159

"Safe Drivers Drive Safe Cars"

ARENDTSVILLE GARAGE

Myers Power Sprayer Sales & Service

GOOD USED SYRAYERS SOLD & TRADED

—A Sprayer To Fit Your Needs—

ARENDTSVILLE, PA.

DIAL 677-7416

"Safety Means Care Everywhere"

WILLIE F. DELAUTER & SON

EXCAVATING CONTRACTOR

Specializing in Septic Tank & Sewer Drainage

18 E. MAIN STREET

THURMONT, MD.

Phone CR 1-2244

COLD STATISTICS . . . SPEED KILLS!!!

Speed is a killer on American Highways! Regardless of how safe a driver you believe you might be, in case of a mechanical failure, human shortcomings, or some slight misjudgment, the speeding driver can almost certainly become involved in a fatal accident. Cold hard statistics have proven this point many times over the nation. Most all automobile operators think of themselves as careful drivers. But, when an accident does occur, it is speed that always kills. Our citizens today are granted an operators license for driving vehicles on our highways. This is a privilege and not a right to endanger the lives of our fellowmen. All persons driving vehicles on highways are urged to drive at a careful and prudent speed. They should not drive greater than nor less than is reasonable and proper, having due regard to the traffic surface, width of the highway and other restrictions or conditions that may exist.

Nobody should drive any vehicle at such a speed as to endanger the life, limb or property of another person. No motorist should drive at a speed greater than will permit him to bring the vehicle to a stop within the assured clear distance ahead. True, each and every State has specific speed limits for various types of highways. This does not mean that every motorist can and should drive at that maximum speed under all conditions. For each of us the answer lies in having a thorough knowledge of our traffic and motor regulations. But this is not enough. This knowledge must be coupled with good common sense plus a willingness to realize that our driving privileges must be shared with thousands of additional drivers each year.

—J. NORMAN FLAX, Town Commissioner

"SAFETY BEGINS IN THE HOME"

PERRY BUILDING SUPPLY

COMPLETE HOME BUILDING SUPPLIES

For The Do-It-Yourself Handyman

441 E. BALTIMORE ST.

TANEYTOWN, MD.

Plymouth 6-4511

"KIDS LOVE LIFE—DRIVE LOVINGLY"

G. C. MURPHY CO.

—Serving the Area Since 1929—

BALTIMORE ST., GETTYSBURG, PA.

"SAFETY THROUGH BETTER ROADS"

McDERMITT INC.

READY-MIXED CONCRETE

General Concrete Work - Concrete Roads

LINCOLN WAY EAST

GETTYSBURG, PA.

EDgewood 4-2131

"KIDS LOVE LIFE—DRIVE LOVINGLY"

FIRST NATIONAL BANK OF FAIRFIELD

—COMPLETE BANKING SERVICE—

FAIRFIELD, PA. — PHONE 642-8225

Member Federal Deposit Insurance Corporation

"BE SAFE FOR LIFE'S SAKE"

FLOHR LUMBER COMPANY

LUMBER & BUILDING SUPPLIES

PHONE 23

BLUE RIDGE SUMMIT, PA.

"CONSIDER GAS FIRST—FOR SAFETY FIRST"

THE MATTHEWS GAS CO.

APPLIANCES & BOTTLED GAS

The Gas Service People Prefer Happy Cooking Gas

EMMITSBURG, MD.

THURMONT, MD.

HI 7-3781

CR 1-6111

"KIDS AND MATCHES DON'T MIX"

S. LEASE WARNER

FUEL OIL DISTRIBUTOR

Radio-Dispatched - Free Burner Service

Easy Budget Plan—Mobil Heating

WESTMINSTER, MD.

TI 8-4477

"Children Err—Drive With Care"

COZY RESTAURANT

Serving The Finest Food Since 1929

SEAFOOD A SPECIALTY

THURMONT, MD.—CR 1-3701

"Make Safety Day Every Day"

THE PALMS

Finest Foods & Beverages

WEST MAIN STREET

EMMITSBURG, MD.

Phone HI 7-2303

"Be Safe For Life's Sake"

EMMITSBURG PHARMACY

Paul M. Carter, Pharmacist

WEST MAIN ST., EMMITSBURG, MD.

Phone HI 7-4821

"Make Safety Day Every Day"

CLARK E. SPENCE

Distributor For Pepsi Cola & Cloverdale

ORRTANNA, PA.—PHONE 642-8849

"Safe Tires Make Safer Driving"

EMMITSBURG TIRE CENTER

Quality Tires - Unlimited Guarantee

DE PAUL STREET — EMMITSBURG, MD.

Phone HI 7-5801

"Kids Love Life—Drive Lovingly"

SELBY BODY WORKS

Auto Body Repairs - Painting - Glass Work

FIFTH STREET—GETTYSBURG, PA.

Phone EDgewood 4-2537

"For Safety's Sake Drive Safely"

SNYDER'S BODY SHOP

Route 116 Fairfield Road, Gettysburg, Pa.

Phone EDgewood 4-5915

"Observe ALL Safety Rules"

Compliments

CLAIRE FROCK CO., INC.

THURMONT, MARYLAND

"Kids Love Life—Drive Lovingly"

BUCHER'S

MOTEL & RESTAURANT

FINEST FOOD—CATERING

Phone HI 7-5701