

The only way to get business is to go after it and keep going after it. Sincerity is the difference between writing and putting down words.



EAST END GARAGE

EMMTSBURG

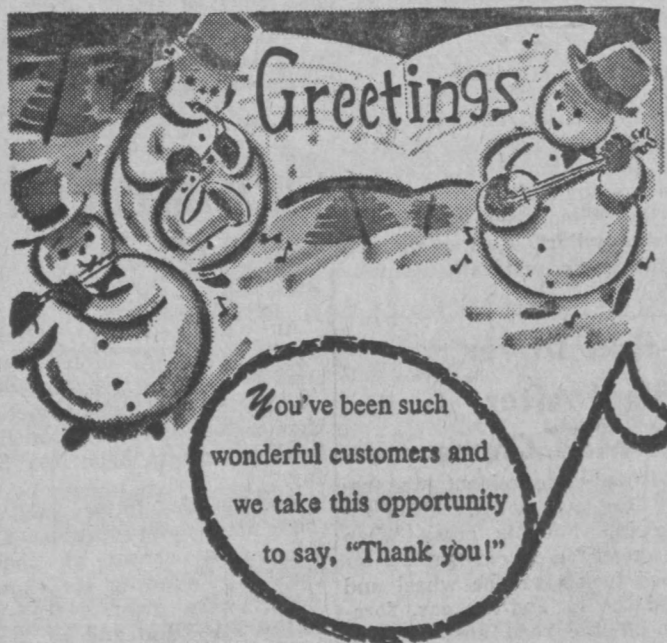
MARYLAND



BEST WISHES FOR Christmas

The very best of Holiday Wishes to all our friends.

Francis X. Elder Post 121 AMERICAN LEGION
Emmitsburg, Maryland

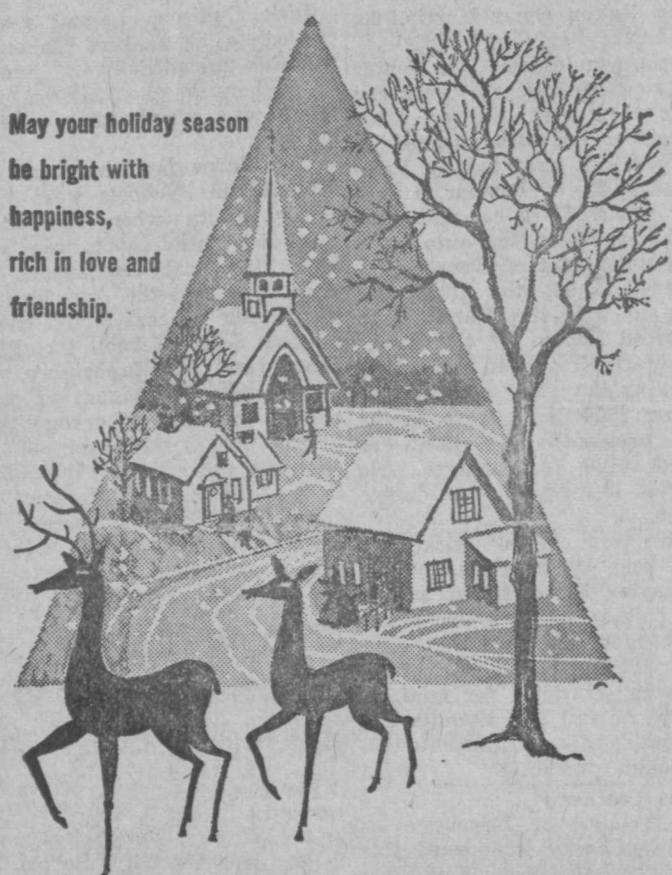


You've been such wonderful customers and we take this opportunity to say, "Thank you!"

IRELAN'S RESTAURANT

EMMTSBURG

MARYLAND



May your holiday season be bright with happiness, rich in love and friendship.

Greetings SPERRY'S GARAGE

EMMTSBURG

MARYLAND

Church Services

ST. JOSEPH'S CATH. CHURCH
Rev. James T. Twomey, Pastor
Rev. Martin J. Sleasman, C.M., Assistant Pastor

Sunday Masses at 7:00, 8:30 and a High Mass at 10 o'clock.

INCARNATION UNITED CHURCH OF CHRIST (Evangelical and Reformed)
John C. Chatlos, Pastor

Christmas Eve, 7:30 p. m., Children's Christmas Program and Candlelight Service, Sunday, 10:30 a. m., regular services. Sermon theme, "God's Unspeakable Gift."

TRINITY METHODIST CHURCH
Rev. Forrest D. Davis, Pastor
Worship Service, 9 a. m.
Church School, 10:00 a. m.
Junior Choir, 7:30 p. m.

PRESBYTERIAN CHURCH
Rev. Wm. M. Hendricks, Pastor
Church School, 9:45 a. m.
Morning Worship, 11:00 a. m.

GRACE BAPTIST CHURCH
Lower Tract Road
Church Service, 9:30 a. m.
TOM'S CREEK METHODIST
Rev. Forrest D. Davis, Pastor
Church School, 9:00 a. m.
Worship Service, 10:00 a. m.

ST. ANTHONY'S SHRINE
Rev. Vincent J. Tomalski, Pastor
Masses on Sunday at 7:30 and 9:30 a. m. Confessions Saturdays at 3:30 and 7:00 p. m.

ELIAS LUTHERAN CHURCH
Rev. Philip Bower, Pastor
Christmas Services
Christmas Eve, Saturday, Dec. 24, 11 o'clock to midnight, traditional Candlelighting Service with special music by the church choirs and band.

Christmas Day, Sunday, Dec. 25, Christmas program by the children in the Parish Hall. The Service, 10:30 a. m., with special music by all three choirs. Infant Baptism and Confirmation.

Correct Address Of Motorists Is Important

State motorists were cautioned today to immediately notify the Maryland Department of Motor Vehicles in writing if incorrect information appeared on their present operator's permit or registration card.

In making the announcement, John R. Jewell, Commissioner of Motor Vehicles, stated that the Department was preparing to print applications for the 1961 license plates and that in order to avoid inconvenience in the near future motorists should correct erroneous records at once.

"By submitting new addresses, name changes and wrong street addresses now," he said, "drivers will save themselves a good deal of trouble later on and as much as a week's delay in getting their new license plates during the 'tag rush.'"

Commissioner Jewell stated that motorists should request name and address changes in writing and include their full name, correct address, title number (as it appears on present registration card) and present license tag number. The driver's permit number should also be included if that too needs correcting.

Under the law, persons must notify the Department of Motor Vehicles of new address or name changes within thirty days. Failure to comply with the law is punishable upon conviction by a fine not to exceed ten dollars.

Many motorists were inconvenienced last year for failing to

properly notify the Department of Motor Vehicles of changed addresses. It was estimated that nearly 50,000 tag applications were returned to the Department by the post office last year because of erroneous addresses.

Christmas Parties Can End In Sorrow

Each Christmas season for the past three years, the Maryland Traffic Safety Commission has called on the persons responsible for the Christmas parties directing their attention to the fact that the National Safety Council now has evidence to prove that the early hours of the holiday period brought the greatest number of traffic crashes, and many of these deaths and injuries were traced directly to these parties.

We wish to assure you that we do not want to dampen the traditional Christmas spirit, but we are again making a special appeal that the customary parties omit the use of the spirits of beverages and instead—in the spirit of charity—contribute to some worthy cause of your own choice the money that might otherwise be spent for the intoxicating part of your celebration.

We want you to know that we are all in favor of everyone greeting and enjoying each other at Christmas parties, but we are also most anxious to prevent accidents that completely ruin the holiday for everyone in the family of those involved in these tragedies.

Every good wish for a safe and Merry Christmas, and a happy New Year.

Week Of Prayer To Be Observed

The Universal Week of Prayer will be observed in Emmitsburg with a series of four Union Services beginning Wednesday night, Jan. 4 in the Lutheran Church and continuing with services in the Reformed Church, Thursday, Jan. 5 and Friday, Jan. 6 in the Methodist Church. The closing service will be in the Presbyterian Church, Sunday night, Jan. 8. All services will start at 7:30 o'clock. Sermons will be by the Pastors exchanging pulpits. Prayer will be the general theme for the week.

Auxiliary Christmas Party

The American Legion Auxiliary held its Christmas party Wednesday evening in the post home. Twenty-six members were present. Gifts were exchanged and cakes were awarded to Virginia Sanders and Mildred Glass. Madeline Harner was awarded the door prize. The members presented a gift to the president, Kathleen Shorb.

Baby Baptized

The infant son of Mr. and Mrs. Allen Stoner was baptized Sunday in St. Joseph's Catholic Church. Sponsors were Mr. and Mrs. Austin Stoner, Baltimore, and the child received the name Christopher Patrick. Rev. Martin J. Sleasman performed the ceremony.

Overholzer Services Held

Funeral services for Mrs. Mary M. Overholzer, 66, who died at her Harney home last Wednesday, were held Saturday afternoon from the Elias Lutheran Church, Emmitsburg, with the Rev. Philip Bower officiating. Interment was in the Mountainview Cemetery. Pallbearers were Harry Sprankle, George Claybaugh, Este Kiser, Atwood B. Hess, Roy Sanders and Roscoe Shindlecker.

To Hold Christmas Party

The Sodality of St. Joseph's parish will hold its annual Christmas party on Tuesday, January 3, at the Green Parrot Tea Room. A short business meeting with the election of officers will take place before the party. Members will exchange \$1 gifts.

Altar Boys Hold Party

The altar boys of St. Joseph's Parish under the direction of Rev. Fr. Martin J. Sleasman held their Christmas party Sunday afternoon in St. Euphemia's Hall. Forty-two boys were present. Entertainment was furnished by Mr. Dave Hagan, a magician from Frederick. A large cake was decorated in honor of the 12th birthday of Michael Shorb December 18.

PERSONALS

Prof. Richard J. McCullough is spending the Christmas holidays visiting his daughter and son-in-law at New Orleans, La.

Prof. Ray Lauer is spending the holidays at his home in Shamokin, Pa.

Mr. John G. Haley, son of Mr. and Mrs. Joseph M. Haley, is spending the Christmas holidays here with his parents after having been a patient at the Waynesboro Hospital for the past four months.

Miss Helen Bushman, Baltimore, visited over the weekend with her parents, Mr. and Mrs. Charles Bushman and family.

Mr. and Mrs. Rodgers Topper, Mt. Airy, visited Sunday with Mr. and Mrs. Robert Topper.

STATE THEATER

THURMONT, MD.

Phone CRestview 1-6841

Friday-Saturday Dec. 23-24

GORDON SCOTT
JOCK MAHONEY
"TARZAN THE
MAGNIFICENT"

—In Color—
Friday Show at 8:57 only
Saturday Shows: 3:00-6:00-9:00

Plus
VAN HEFLIN
CHARLES LAUGHTON
"UNDER TEN FLAGS"

Friday Shows: 7:15 - 10:10
Saturday Shows: 4:28-7:38-10:48

Sunday-Monday Dec. 25-26

STEVE REEVES in
"HERCULES UNCHAINED"

—In Color—
Sunday Shows: 7:00-9:00
Monday Shows: 7:15 - 9:15

Tues.-Wed.-Thurs. Dec. 27-28-29

STUART WHITMAN
PEGGY WOOD
"THE STORY OF RUTH"

In CinemaScope and Color
Shows at 7:15 & 9:37
A story of overwhelming love and the search for God!

MIDNITE SHOW DEC. 31
DEAN MARTIN
SHIRLEY MACLANE
"CAREER"

Plus Cartoon



NEW BLUE DUCK INN

FRANK AND CASS GEBHART
EMMTSBURG MARYLAND



ORENDORFF'S FOOD MARKET

LAURENCE, ANN AND LARRY
EMMTSBURG MARYLAND



Whether Santa arrives by reindeer or jet, we hope he brings you a happy holiday season . . . just as you've brought us a happy year, through your patronage and good will. Many thanks!

FIRST NATIONAL BANK OF FAIRFIELD

FAIRFIELD, PA.
MEMBER FEDERAL DEPOSIT INSURANCE CORP.
—3% INTEREST PAID ON SAVINGS ACCOUNTS—

Telephones Busy Christmas Day

How come there are more long distance telephone calls made every business day than there are on Christmas?

Doesn't the younger generation care any longer about "the old folks at home?" For that matter, have the "old folks" forgotten their attachment for children far away at Christmas time? Don't you believe it!

The telephone company expects this Christmas to be the most hectic day of the year as usual, maybe even more so. And if you are planning to place a long distance call between 7 p.m. on Christmas Eve and about 10 p.m. on Christmas night, whether it's to a town 3,000 miles across the continent or a town 50 miles away, it's quite possible that you will have some waiting to do.

It is true that the millions of Americans who will call long distance this Christmas will be substantially lower than those whose long distance calls go through promptly on any regular business day.

But there is a logical explanation for that. The bulk of everyday long distance calling is of a business nature, mostly between offices in large metropolitan centers. There are hundreds of long distance lines or circuits between large cities like Baltimore, New York, Philadelphia, Chicago and Los Angeles, and they can easily handle the everyday traffic.

Christmas calls, on the other hand, are almost exclusively inspired by sentiment and a very large number of them to small towns or homes in suburban areas.

That's where the difficulty arises. The lines that connect big cities with small towns or rural communities are far less numerous, and heavy long distance calling to such areas may require some juggling of circuits—and some waiting.

According to Mr. Roger Heck, manager, the phone company puts a lot of prior planning into the handling of the one-day-a-year Christmas load.

Immediately after Mother's Day, the second peak holiday of the year in long distance calling, the telephone company's analysts begin a study of calls made on that day and on the previous Christmas.

With information on the points of heaviest traffic and the places

where the longest and most frequent delays occurred, company engineers estimate where additional long distance equipment is most urgently needed for the current Christmas.

Anticipating that operators will handle a record number of Xmas long distance calls from this area, Miss Bowman, chief operator said a large operating force will be on duty. She also said that many thousands of incoming calls will be made to telephones served from her switchboards.

Miss Bowman said that her experience has shown Christmas long distance callers can help expedite their calls by making use of the following suggestions:

Dial your long distance call directly if it is possible to do so. Your telephone directory has information about this.

Call by number if the number cannot be dialed directly. This saves one whole operation on the call, since the operator does not first have to contact "Information" in the called city or town.

Call station to station. This saves the extra time it takes to get a person-to-person call through and the cost is lower.

If you know the calling route or area dialing code of the place you are calling, it will save time if you give this information to the operator.

Give the operator a little extra time to answer you. The chances are that she's swamped with calls, and hanging up to dial again will not expedite the call.

According to Miss Bowman the reduced holiday rates go into effect at 6 p. m. on Saturday, Christmas Eve and end on Tuesday, December 27 at 4:30 a. m.

If you wish to call early, and pay the full daytime rate, your chances of getting through on the afternoon of Christmas Eve are better than if you wait until later, she said. Reduced rates apply all day Monday, December 26 and since the volume of calls will be less that day, most calls will be completed promptly.

The chances are that you, like many of the other millions of callers, may have to be patient and wait your turn to say "Merry Christmas" across the miles.

Tips On How To Save Gasoline

"You can make a worthwhile contribution to the reduction of air pollution in Maryland and save yourself money in the bargain by keeping your car in tip-top operating condition," according to the Maryland Petroleum Association.

Everyone knows that neglected cars don't give as much gasoline mileage as cars in good condition. Moreover, research has shown that an auto with one bad spark plug emits 25 times more unburned gas than one operating at ordinary highway speeds with a well-tuned engine. As much as a gallon out of every tankful of gasoline can pass into the air through a faulty carburetor without doing a lick of useful work. Loose piston rings also allow gases to escape unburned.

Periodic checkups, the MPA claims, will not only save you pocket money, but will help to reduce the smog that makes your eyes water, cracks your tires, cuts visibility and injures some farm and garden crops. Such checkups, which cost comparatively little, should include:

1. Periodic carburetor adjustment by a competent mechanic.
 2. Replacement of faulty carburetor and fuel pump gaskets and tightening of fuel line connections.
 3. A compression check which will show whether new piston rings are needed.
 4. Examination of the distributor and spark advance mechanism.
 5. Cleaning or replacement of fuel tank filler cap gasket to minimize evaporation.
 6. Visual examination of the exhaust as it comes from the tailpipe. If bluish smoke is seen it means that excessive oil is being burned.
 7. Oil and filter cartridge changes at regular intervals.
 8. Regular spark plug checks and replacement when necessary.
 9. Cleaning of the cooling system and thermostat.
 10. In addition to getting the checkup habit, avoid unnecessarily quick stops, jackrabbit starts and gunning of the motor while idling.
- If you follow this ten-point program faithfully, you will never be a smogster.

King Pumpiphol Aduldet of Cambridge, Mass., while his father Thailand says the U. S. is half er was attending Harvard Medical School. He was born in ical School.

ATTENTION!

Members of the Gettysburg Moose

—FREE PRIZE GAME EVERY FRIDAY NIGHT—
Free Prizes Awarded — Come in and Win!

CLOSED—5 P.M., Saturday 'til Tuesday, Dec. 27

BIG NEW YEAR'S EVE PARTY—SAT., DEC. 31

MUSIC BY RUDY CARROLL'S COMBO



May the Joy and Peace of Christmas always be with you

ZURGABLE BROS.

EMMITSBURG MARYLAND

SIGN UP TODAY

FREE HOLIDAY DRAWING

LIONEL ELECTRIC TRAIN SET AND SPANNER DOLL HOUSE SET

WIN WIN WIN

—ONE CHANCE WITH EACH \$2 PURCHASE—

LET'S HAVE AN OLD-FASHIONED CHRISTMAS

Gifts Galore

Hallmark Cards; Better Cosmetics; the Best Candies

—EMMITSBURG'S ONLY DRUG STORE—

Licensed By YOUR State for YOUR Health.

EMMITSBURG PHARMACY

Phone HI 7-4821 or 7-4342

Emmitsburg, Md.

Earl E. Shank Jr., B.S.

Robert's CHEVROLET

Franklin-Fulton Co's.
Only Authorized
WILLYS - JEEP
DEALER

USED
4x4 & 4x2
STA. WAGONS
51 & 52 MODELS
Pa. State Inspected

OK

NEW JEEPS
IMMEDIATE DELIVERY
Pickups - Wagons - Univ.

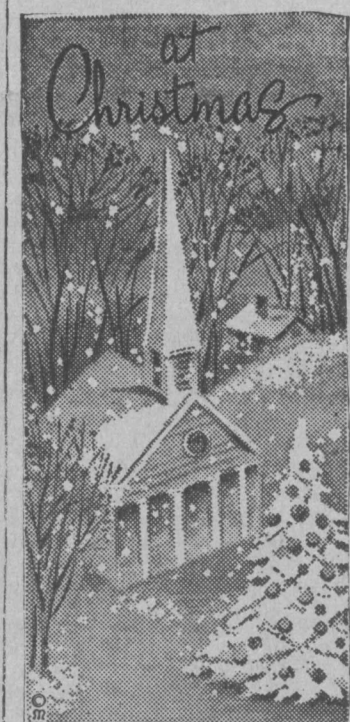
Genuine Parts
Expert Service

Phone 1801

Robert's CHEVROLET

So. Potomac At 10th
WAYNESBORO, PA.

Julia Ward Howe who wrote "Battle Hymn of the Republic", was sometimes a minister. She gave her sermons in the Unitarian Church.



May you enjoy a truly Merry Christmas.

ROSE ANN SHOPPE

Mrs. Catherine Utz
GETTYSBURG, PA.

STANLEY WARNER MAJESTIC

Now-Sat. Dec. 24-26-27
EDMUND PURDOM
SYLVIA LOPEZ
"HEROD THE GREAT"
CinemaScope—Color

HI KIDS!! ADULTS TOO!!
GIANT XMAS EVE MATINEE
Sat., Dec. 24—1:00 P. M.
"PRINCE VALIANT"
5 EXTRA CARTOONS
PLUS — 2 FREE PACKS
OF HERSHEY-ETS
Admission — 25c

Sun-Mon.-Tues. Dec. 25-26-27
Continuous Showings Xmas Day
at 2:00 P. M.; Monday, Dec. 26
at 1:00 P. M.

JOHN WAYNE CAPUSNE
ERNIE KOVACS FABIAN

Johnny Horton Sings
"NORTH TO ALASKA"
CinemaScope—Color

Wed.-Sat. Dec. 28-31
ELVIS PRESLEY JULIET PROWSE
"G. I. BLUES"
CinemaScope—Color

CHRISTMAS CLUB CHECK

PAY TO THE ORDER OF *Louise Conger* \$200
Two Hundred DOLLARS
Conna Wauer

BE SURE YOU GET ONE IN '61

Join our Christmas Club Now . . . look forward to a check in '61, just when you need it for all your Christmas shopping.

The Farmers State Bank

EMMITSBURG

MARYLAND

MEMBER OF THE FEDERAL DEPOSIT INSURANCE CORPORATION.
3% INTEREST ON SAVINGS ACCOUNTS



The pause that refreshes



Bottled under authority of The Coca-Cola Company by

©1960 THE COCA-COLA COMPANY. "COCA-COLA" AND "COKE" ARE REGISTERED TRADEMARKS.

FREDERICK COCA-COLA BOTTLING CO., INC.
1801 N. Market Street
NELSON E. LANGAN Manager
Phone MOnument 2-2571

SPORTS AFIELD

By Ted Kestner

About 15 years ago Jason Lucas, Angling Editor of Sports Afield Magazine, began writing to fly-line makers, pointing out that their way of listing line sizes by diameter didn't make much sense, and couldn't be accurate because diameter has no bearing whatever on whether a given line will fit a certain rod—it's only the weight of a line that counts in this respect.

Lucas' long-fought campaign has finally paid off. The Associated Fishing Tackle Manufacturers has adopted new fly-line standards. Previously classified by diameter, this new classification by weight will stabilize fly-line sizes from all tackle manufacturers.

The new listing by weights will, if all makers adhere to it, end that compound confusion. If your rod works best with, say a C level, it will take a C level regardless of whether the line is of solid lead or braided of elder-down, since a given length of each would have exactly the same weight.

According to the information supplied, the front taper of tapered lines will not be included in weighing. This is, of course, correct, because the taper has nothing to do with casting qualities; it may be regarded as no more than an extension backward of the tapered leader. And if you think that would make too long a leader, to call for a change in lines sizes, remember that a few advanced anglers sometimes use tapered leaders up to 20 feet long, without changing line sizes from that used with much shorter.

The rear taper and level should not be weighed, for they have nothing to do with casting qualities of a three-diameter—except to let you "shoot" line far easier than you can with a level or double-taper. And the exact diameter or weight of the rear taper and level are of little consequence, as long as the level is thin enough so it will not impede shooting. In fact, some anglers

cut off the rear level and replace it with monofilament, and weighing such would ball up the whole business.

Read carefully, and be sure to save, the following table. It gives weights for numbers of lines, and the letters used to designate those of different types.

TABLE FOR NEW LINE SIZES

Class	Weight	Range
1	60	54-66
2	80	74-86
3	100	94-106
4	120	114-126
5	140	134-146
6	160	152-168
7	185	177-193
8	210	202-218
9	240	230-250
10	280	270-290
11	330	318-342
12	380	368-392

Based on weight in grains of a 30-foot section. "Range" means maximum manufacturing tolerances allowed.

New letters will identify lines
 L Level
 DT Double Taper
 WF Weight Forward
 F Floating
 S Sinking
 I Intermediate

Thus, a DT-9-F will be a floating, double-taper line whose 30-foot section weighs 240 grains



YOUR Social Security

Many of the 4,750 Frederick County residents receiving monthly social security benefits will be affected by the recent liberal change in the way earnings over \$1200 in a year affects their benefits, according to W. S. King, Hagerstown District office manager.

Under the old law which stays plus or minus ten grains.

What you're probably anxious to know is which line in the new sizes will replace your present but about worn-out line that fits your rod perfectly. As you should have seen from the foregoing, seven fortunetellers working overtime could not tell you that, owing to the confusion of the old system. No need to worry—there will be conversion tables packed with lines marked by the new system.

in effect until 1961, a beneficiary under age 72 who goes to work and earns more than \$1200 loses one month's benefit check for every \$80 (or fraction of \$80) by which his earnings go over \$1200. Earnings of even \$1 over the \$1200 limit mean the withholding of the beneficiary's entire monthly check. If his wife is also entitled to benefits based on his social security account, her benefit also is withheld.

Beginning with 1961, a beneficiary who earns \$1200 or less will get his benefit payments for all 12 months of the year. A beneficiary who earns more than \$1200 in a year will have \$1 of his benefits withheld for each \$2 that he earns from \$1200 up to \$1500. For every \$1 that his earnings go above \$1500, \$1 of benefits will be withheld.

Under the old law, many beneficiaries received more in total income (earnings plus benefits) if they limited their earnings to \$1200 a year. Under the new law this will no longer be true. A beneficiary who earns over \$1200 in a year will always receive more in combined earnings and benefits than if he had earned \$1200 or less.

Also many eligible people who have not applied for their benefits because their earnings amount to over \$2080 (and ordinarily could not draw any checks) may now find it to their advantage to apply. For example, under the new law a couple entitled to a monthly family check of \$180, the maximum now payable to a retired worker and dependent wife, would now get some benefits if the husband earns less than \$3510 in a year.

There is no change in the provision which states that regardless of how much a beneficiary earns in a year, he will get a benefit check for any month in which he neither earns more than \$100 in wages nor renders substantial services in self-employment.

For decades, newspapers' audited circulation has kept pace with the increasing number of U. S. households. Since 1920, the number of U. S. households has doubled; newspaper circulation has also more than doubled.

If you listen to any person talk long enough you will find out what you want to know.

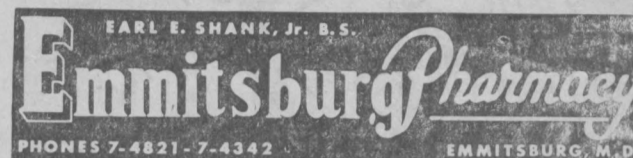
Last year total assets of all \$340 million and 29,658 persons Maryland hospitals amounted to were employed full time.



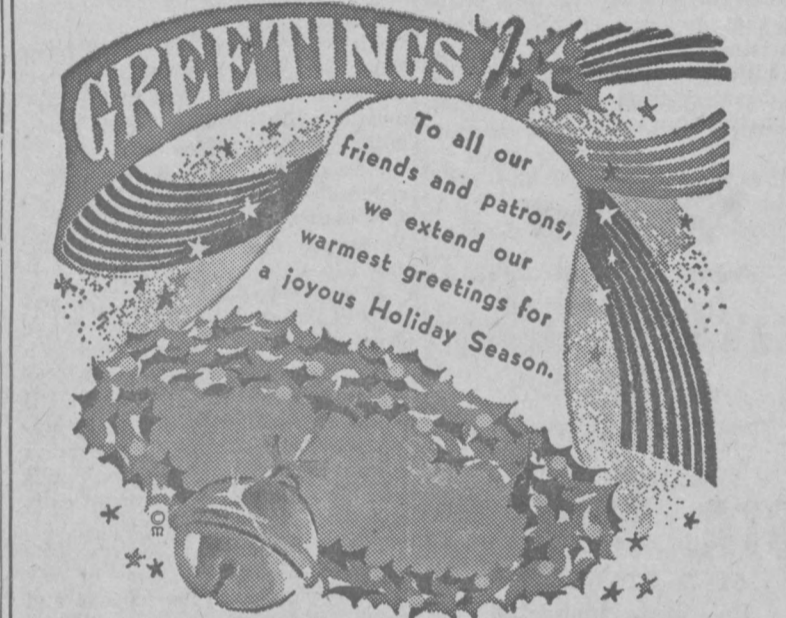
DISTINCTIVE - TASTY - GOOD
 FOUND IN BETTER DRUG AND DEPARTMENT STORES

VARIED SELECTION—\$1.50 PER POUND

—Exclusively—



Emmitsburg Feed & Farm Supply
 EMMITSBURG MARYLAND



KEEPERS and ADELSBERGER
 EMMITSBURG MARYLAND



SANDERS GARAGE
 EMMITSBURG MARYLAND

Business Services

PATRONIZE our Advertisers. These firms are reliable and have proven through the years that they handle only quality products and offer skilled professional service and advice to their patrons.

ALLEN D. COOL
 CERTIFIED WATCHMAKER
 S. Seton Ave. Emmitsburg
 Phone HI 7-3024

(Approved Singer Dealer)
Phone 7-2273
 SEWING MACHINES
 VACUUM CLEANERS
 APPLIANCES
EMMIT SEWING CENTER
 402 W. Main St. - Emmitsburg

DR. R. P. KLINGER, JR.
 Optometrist
 19 East Main Street
 EMMITSBURG, MD.
 Eyes Examined - Glasses Fitted
 Complete Optical Repairs
 HOURS
 MONDAY: 6:30 p.m. to 8:30 p.m.
 (Other Evenings By Appointment)
 PHONES
 EMMITSBURG HI 7-5191
 WESTMINSTER TI 8-8340

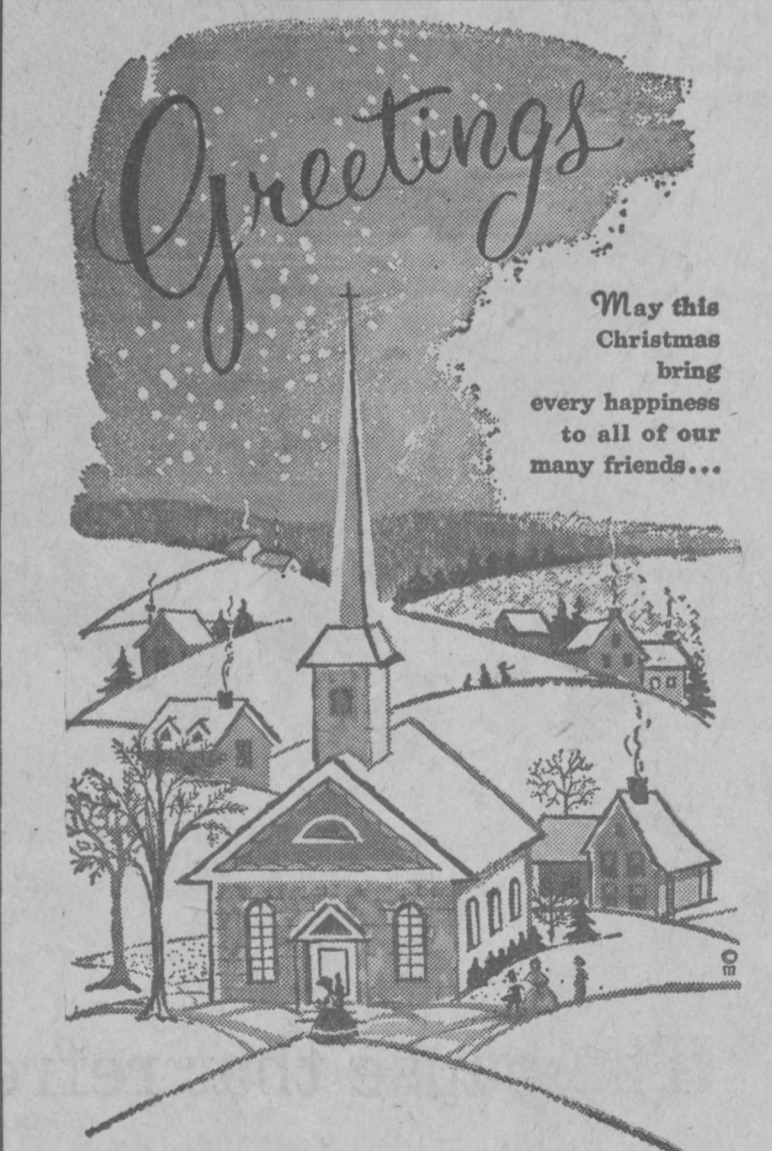
C. E. WILSON
 Funeral Home
 EMMITSBURG, MD.
 Phones:
 Emmitsburg 7-4621
 Fairfield 6

Fast and Dependable
Prescription Service
 Accuracy Comes First
 Your Rxall Drug Store
Peoples Drug Store
 York Street, Gettysburg

Dr. D. L. Beegle
 CHIROPRACTOR
 EMMITSBURG, MD.



GETTYSBURG HARDWARE
 GETTYSBURG PENNSYLVANIA



S. LEASE WARNER
 YOUR FRIENDLY MOBIL OIL DEALER
 R. D., WESTMINSTER



WEISHAAR BROS.
 GETTYSBURG PENNSYLVANIA

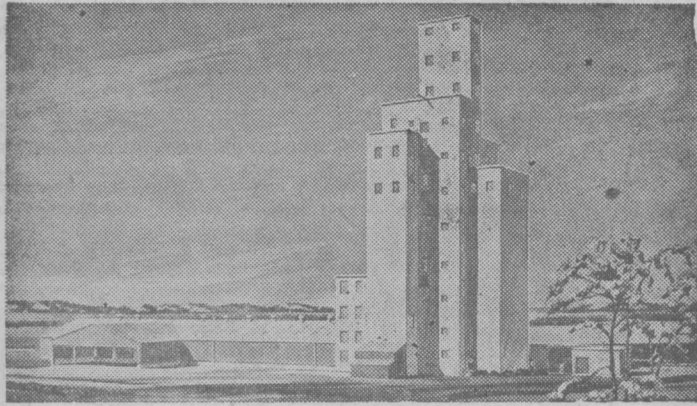


RUSSELL B. OHLER & SON
 —ELECTRICAL CONTRACTOR—
 EMMITSBURG MARYLAND



Thurmont Cooperative Inc.
 THURMONT MARYLAND

Cooperative Constructing New Feed Mill



Construction has just gotten under way on a new Southern States Cooperative feed mill in Baltimore. This new facility (artist's sketch is shown above) is scheduled for completion in October, 1961. The plant, which will turn out 80,000 to 90,000 tons of feed annually on a one-shift basis, will cost approximately \$1,500,000. It will replace the present obsolete 27-year-old mill, the first wholesale manufacturing facility to be built and owned by the members of the cooperative. Included in the project are the mill building itself, storage warehouse, boiler facilities, service quarters, liquid storage, and complete loading and unloading facilities. The mill will be a "batch" plant, with ingredients for each 3-ton batch being electronically selected, weighed

Many Wreaths Sold On Eastern Shore

Among the several million holly wreaths that Americans are buying these days, there will be about 30,000 that are made by hand out of fresh wild holly. All of these 30,000 will be put on the market through one outlet—the Holly Auction at Fruitland on the Eastern Shore of Maryland,

which occurred this year December 10, 14 and 17. It is a unique transaction that has been held annually since about the turn of the century.

Today, nobody can tell you just what year it got started. Everybody on the Eastern Shore knows for sure, however, that the Fruitland Holly Auction is the only one of its kind in the United States.

It began when Mr. Norman Carey, a Fruitland produce merchant, hit on a plan that would meet the seasonal demand for holly decorations and also provide winter income to the farmers in his neighborhood. He let it be known that he would buy wreaths in quantity, paying cash, and established his auction accordingly. It was an immediate success.

Pleased The Farmers' Wives
The farmers — and even more so the farmers' wives — were quick to see the desirability of selling a product that cost them nothing. Maryland's Eastern Shore is "the holly heart of the world." The Christmas shrub grows there in huge abundance. Also common are crowfoot, turkey beard and cedar, while the rarest but most poignant of all yuletide plants—the mistletoe—can be found in masses in the Wicomico County woods if one knows where to look. The farmers knew. They just went out on their own lands and got their materials. Then on auction days, they came home with a pocketful of money. They are doing it still.

On opening day of this year's auction, a line of some 40 cars and trucks formed along the Fruitland Street leading to the auction lot behind the firehouse. Trucks and backseats of the vehicles were piled with Christmas decorations. There were about 8,000 pieces.

Everybody Happy
At 10 o'clock the buying started. The auctioneer, Mr. Carroll Long, who has handled the event for several years, kept up a lively pace. His singsong patter was unintelligible to a layman, but it obviously made good sense to the participants, for everyone seemed

happy. Almost all the sellers are colored people. Some came from Virginia and Delaware, but most were from Maryland. They received from 50c to 75c for their larger wreaths, depending on quality, and from 39c to 49c for their smaller ones. To judge by the satisfied faces, these were good prices.

The wreaths, once sold, are shipped to buyers in Philadelphia and New York. But the chief local buyer today remains the Carey family. On the death of the originator, Mr. Norman Carey, his two sons inherited the business. And when one son, Richard, died, his widow took his place.

It's Now A Tradition
She is today, by a second marriage, Mrs. W. R. Bloxom, but—such is Maryland loyalty to tradition—she continues her part in this now traditional Eastern Shore event. For the Holly Auction has become something more than a sale. It is a custom. Mrs. Bloxom, who is young and charming, spoke with quiet feeling of the ways by which the traditional nature of the event is kept. "We ship in the old style crates," she said. "We like the sentiment."

Sentiment does not seem an out of place element in a Christmas transaction. Visitors who are sensitive will meet it in many

other aspects of the life of Maryland's Eastern Shore.

and healthy New Year. This column is sponsored in the interest of better health by your Tuberculosis Association.

YOUR PERSONAL HEALTH COLUMN

Merry Christmas

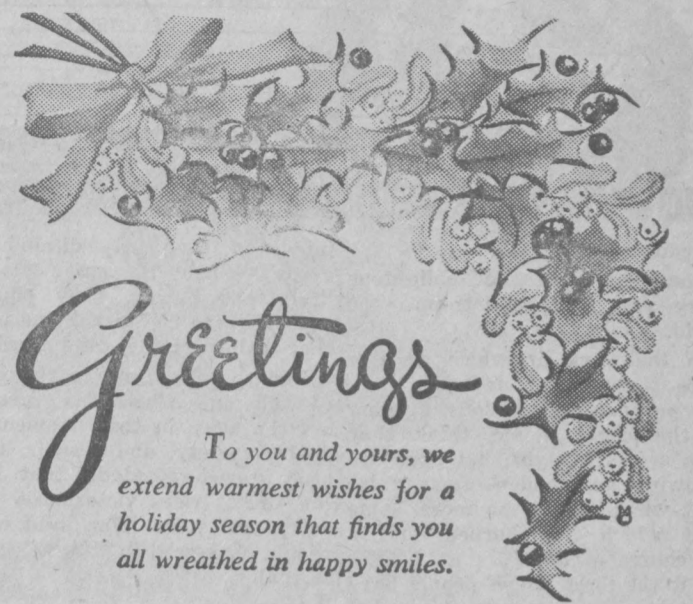
The 1960 Christmas Seals couldn't be more enchanting. Their young carol singers with glowing lanterns are bound to add extra Christmas cheer when you put them on letters, cards and packages. And the appearance of the Seals each year assures you that your tuberculosis association continues to fight TB for you in your community.

Your Christmas Seal dollars work for you all through the year. In case-finding efforts, in the education of professional people specializing in TB, in the provision of needed funds—Christmas Seals are at work.

Christmas Seals work all the time to improve the general health of the community. They help to pay for research into better methods of prevention, diagnosis and treatment. Christmas Seals are behind unremitting efforts to find and close the gaps in TB control.

When you support Christmas Seals, you invest in your own good health as well as the health of your community.

Your TB association wishes you a merry Christmas and a happy



To you and yours, we extend warmest wishes for a holiday season that finds you all wreathed in happy smiles.

RIFFLE'S GARAGE

PHONE CR 1-6666

THURMONT



May your Christmas be a merry one.

BLOCHER'S

GETTYSBURG

PENNSYLVANIA



May the spirit of Christmas bless you and yours.

CROUSE'S

MR. AND MRS. WALTER F. CROUSE AND SUSAN EMMITSBURG MARYLAND



Blessings to our many friends and patrons for a Christmas that will be rich in joy and good health.

MR. and MRS. EDWARD G. LINGG

EMMITSBURG

MARYLAND

DAVE OYLER MOTORS

Phone ED 4-1116

333 Steinwehr Ave. - Gettysburg

SAVE \$100 TO \$300 ON SNOW CLEARANCE SALE OF ALL THESE SAFE-BUY USED CARS

- '60 Mercury 2-dr.; Power Steering; One owner
- '57 Mercury Mont. 4-door. Was \$1095, now \$965
- '57 Ford 2-door Sedan V-8. Was \$895, now \$895
- '56 Chevrolet V-8 4-door sedan; Straight Stick
- '56 Ford 4-door Fairlane; P.S.
- '55 Mercury Station Wagon. Was \$895, now \$695
- '55 Dodge 2-dr. Sedan. Was \$795, now \$595
- '55 Pontiac Star Chief 4-door; real clean
- '54 Mercury Montclair Hardtop Coupe. Was \$795, now \$495
- '54 Mercury 2-door Sedan. Was \$695, now \$495
- '54 Chevrolet 2-door Sedan; Pr. Glide
- '54 Chevrolet 4-door Bel Air. Was \$595, now \$495
- '53 Ford Station Wagon

Many Other Late Model Cars All Reduced For Quick Sale See Them - Drive Them - Buy Them At These Low Prices



TOBEY'S

GETTYSBURG

PA.



Our wish is simple but sincere ...
May you enjoy a Merry Christmas

B. H. BOYLE AND FAMILY

EMMITSBURG

MARYLAND



May all the joys of the Yuletide season be yours in great abundance!

J. RALPH McDONNELL

—ELECTRICAL CONTRACTOR—

EMMITSBURG

MARYLAND



Christmas Greetings

Because it is the Holiday Season and because we want to wish you every joy and ever-lasting happiness, we send you our friendliest Christmas Greeting.

Roger Liquor Store

EMMITSBURG

ANN G. ROGER, PROP.

MARYLAND

TODAY'S meditation



The Upper Room
© THE UPPER ROOM, NASHVILLE, TENNESSEE
THE WORLD'S MOST WIDELY USED DEVOTIONAL GUIDE

and follow it to the end of our days. In our great Redeemer's name. Amen.
Thought For The Day
Jesus Christ—the light for the world yesterday, today, and forever.

Annie Zachariah (India)

Hurricane Damage Tax Deductible

Hurricane Donna, which struck the east coast during September 1960, is reported to have been the worst hurricane of the century. It is estimated to have caused hundreds of millions of dollars in damages to grounds, dwellings, automobiles, books, furniture and other business and non-business properties. Damages were also caused throughout the United States during 1960 by tornadoes, floods and other disasters. The actual loss you have sustained from casualties of this kind and from fires, automobile accidents, thefts, etc., and in some cases

from the condemnation of your property for public use, is deductible on your Federal income tax return.
Irving Machiz, District Director of Internal Revenue for the Baltimore District which comprises Maryland and District of Columbia, said today the purpose of this information release is to acquaint the taxpayers with their rights under the Federal tax laws and to insure that they obtain all the benefits of the deductions to which they are legally entitled as the result of their loss so that they pay no more or less than their correct tax liability.

You may deduct the net amount of actual property loss resulting from a casualty, or from theft. These may be business or non-business losses. The deduction is allowed only to the person who owns the property.

A casualty is the complete or partial destruction of property resulting from an identifiable event of a sudden, unexpected, or unusual nature. Damages from a hurricane, tornado, flood, storm, shipwreck, fire or accident are casualties.

If ornamental trees and shrubs on residential property are damaged or destroyed by a casualty, you may or may not have a deductible casualty loss. To be deductible, it must be established that there has been a decrease

in the total value of the real estate.

If you claim a casualty or theft loss you may be called upon to show:

1. The nature of the casualty and when it occurred (or in the case of theft, when it was discovered);
2. That the loss was the direct result of the casualty (or in the case of theft, that the property was actually stolen);
3. That you were the owner of the property;
4. The cost or other basis of the property, evidenced by purchase contract, deed, etc. (Improvements should be supported by checks, receipts, etc.);
5. Depreciation allowed or allowable, if any;
6. Fair market value before and after casualty; and
7. The amount of insurance or other compensation received or expected to be received for damages to the property, including the value of repair, restoration, and clean-up provided without cost by disaster relief agencies or others.

If you have photographs of your property as it existed before it was damaged, they will be helpful in showing the condition of the property prior to the casualty. Photographs taken after the casualty which show the extent of damage will be helpful in establishing the condition of the prop-

Emmitsburg Chronicle

EMMITSBURG, FREDERICK COUNTY, MARYLAND
Published weekly on Friday by the CHRONICLE PRESS INCORPORATED, 808 Seton Avenue, Emmitsburg, Maryland. Telephone EM1111-1111.

CHARLES ARTHUR ELDER, Editor-Publisher

All Communications and Checks intended for this Paper should be addressed and made payable to the CHRONICLE PRESS INCORPORATED, Emmitsburg, Md.

Copy for Advertisements must be received in this office not later than Wednesday evening to insure publication in the current week's edition. Advertising rates furnished upon request. Subscription rate, \$3.00 per year in advance.

Entered as Second Class Matter at the Postoffice at Emmitsburg, Maryland, under the Congressional Act of March 3, 1879.



Member of Maryland Press Association, Inc. and Pennsylvania Newspaper Publishers Assn.

Read John 8:12-17.
The true light that enlightens every man was coming into the world. (John 1:9, RSV.)

In the world in which we live there is much of darkness. We see peoples and nations groping in the dark. Some think they have seen the light; but they are following an illusion—some false light which guides no more, some light which has burned out in the course of time.

But the light which people have seen in Christ never fades because its very source is God. There are, of course, moments in our lives when we doubt this. There was such a moment in the

minds of the early disciples of Jesus. When He was crucified, dead, and buried, they thought that was the end of the one whom they called Master and Lord.

But to them, and to thousands of believing Christians throughout the ages, in their moments of doubt, anxiety, and despair it has been proved repeatedly that Jesus the Christ rises victoriously over every evil force. The light which people have seen in Him will shine eternally.

Prayer

O Thou art the eternal light, shine in the darkness of our world and in the darkness of our souls. In Thy light may we see light

erty after it was damaged. Photographs showing the condition of the property after it was repaired, restored, or replaced may also be helpful.
Other Disasters, Thefts and Condemnations.
Motto of Kentucky is, "United we stand; divided we fall."

For further information contact your local Internal Revenue Office and ask for Document 5174 (9-60), "Hurricanes, Floods, Tornadoes, We do not want to disappoint anybody; consequently, we make no predictions."



GREETINGS

May all the joys of the Christmas Season be yours

GALL & SMITH

THURMONT MARYLAND



May we extend to you our very best wishes for a Holiday Season rich in happiness and joy.

SAYLER'S STORE

MOTTERS MARYLAND



SEASON'S Greetings

J. H. WALTER

T/A J. W. WALTER

—FORMSTONE—

EMMITSBURG MARYLAND

LEGALS

ADMINISTRATOR'S C.T.A. NOTICE

This is to give notice that the subscriber has obtained from the Orphan's Court of Frederick County, in Maryland, letters of Administration c.t.a. on the estate of

SALLIE E. MATTHEWS late of Frederick County, Maryland, Deceased. All persons having claims against the deceased are warned to exhibit the same, with the vouchers thereof, legally authenticated, to the subscriber, on or before the 5th day of June, 1961 next; they may otherwise by law be excluded from all benefit of said estate. Those indebted to the deceased are desired to make immediate payment.

Given under my hand this 23rd day of November, 1960.

Edward D. Storm
Administrator c.t.a.
Edward D. Storm
Attorney

True Copy—Test:
THOMAS M. EICHELBERGER
Register of Wills for Frederick County, Md. 12/25/60

ADMINISTRATOR'S NOTICE

This is to give notice that the subscriber has obtained from the Orphan's Court of Frederick County, in Maryland, letters of Administration on the estate of

FRANK BAKER late of Frederick County, Maryland, Deceased. All persons having claims against the deceased are warned to exhibit the same, with vouchers thereof, legally authenticated, to the subscriber, on or before the 26th day of June, 1961 next; they may otherwise by law be excluded from all benefit of said estate. Those indebted to the deceased are desired to make immediate payment.

Given under my hand this 14th day of December, 1960.

Jacob E. Baker
Administrator
Edward D. Storm
Attorney

True Copy—Test:
THOMAS M. EICHELBERGER
Register of Wills for Frederick County, Md. 12/23/60

ADMINISTRATOR'S NOTICE

This is to give notice that the subscriber has obtained from the Orphan's Court of Frederick County, in Maryland, letters of Administration on the estate of

CARRIE BAKER late of Frederick County, Maryland, Deceased. All persons having claims against the deceased are warned to exhibit the same, with vouchers thereof, legally authenticated, to the subscriber, on or before the 26th day of June, 1961 next; they may otherwise by law be excluded from all benefit of said estate. Those indebted to the deceased are desired to make immediate payment.

Given under my hand this 14th day of December, 1960.

Jacob E. Baker
Administrator
Edward D. Storm
Attorney

True Copy—Test:
THOMAS M. EICHELBERGER
Register of Wills for Frederick County, Md. 12/23/60

ADMINISTRATOR'S NOTICE

This is to give notice that the subscriber has obtained from the Orphan's Court of Frederick County, in Maryland, letters of Administration on the estate of

JULIA C. BAKER late of Frederick County, Maryland, Deceased. All persons having claims against the deceased are warned to exhibit the same, with vouchers thereof, legally authenticated, to the subscriber, on or before the 26th day of June, 1961 next; they may otherwise by law be excluded from all benefit of said estate. Those indebted to the deceased are desired to make immediate payment.

Given under my hand this 14th day of December, 1960.

Jacob E. Baker
Administrator
Edward D. Storm
Attorney

True Copy—Test:
THOMAS M. EICHELBERGER
Register of Wills for Frederick County, Md. 12/23/60

- ROAD STONE
- FREE STATE MASONRY MORTAR
- READY-MIXED CONCRETE
- MASONS' LIME
- AGRICULTURAL LIMING MATERIALS

M. J. GROVE LIME COMPANY

Phone Thurmont CR 1-6381 — Frederick MO 2-1181

Busy mother keeps tab on phone calls

Diary shows phone saved days of time, 156 miles of travel and \$11.70 in two weeks



Mrs. Harris of La Vale, Maryland, talks over Choral Society plans with a friend—while 4-year-old Carolyn keeps tabs on Mother.

Mrs. Harris is the mother of two small boys, ages 6 and 8, and a pre-school daughter. Her husband is a teacher. With youngsters this age, and a husband whose profession calls for continual contact with parents, a phone often seems like a necessity.

Mrs. Harris decided she'd find

out for sure, so for two weeks she kept tabs on her phone calls with a telephone diary. The diary spelled out the value of phone service in hours saved—fewer miles of errand running—and resultant savings in dollars and cents that virtually cut the cost of phone service to nothing.

Probably you don't keep a telephone diary. But if you did, we think you'd be pleasantly surprised at the many ways your telephone pays for itself.

THE C & P TELEPHONE COMPANY OF MARYLAND

smart people are want-ad minded!

FOR SALE

FOR SALE—Turkeys, Ducks and Geese. Regis Sanders, phone HI 7-5362.

Automobiles For Sale For Sale at Public Auction, Wed., Jan. 4, 1961, 10:30 a. m. at Roberts Chevrolet Inc., South Potomac St. at 10th, Waynesboro, Pa.; Repossessed, 1 1952 Ford Hardtop, serial number D2 DA163956, from Charles E. Flaugh, R2, Gettysburg, Pa. 12/23/2t

REAL ESTATE FOR SALE Price \$8,000.000. Near Emmitsburg, along hard rd., school bus to schools, nice 6 room brick bungalow, with bath room, heat, garage and one acre of land. This home sets up with nice view of mountains, can buy with low down payment, interest at 4 1/2 %.

Along Route 15 I have a 7 room brick house with one and a half baths, heat and 5 1/2 acres land, and this land is between and fronts on old Route 15, and also on the new Route 15, real buy, \$10,500.00.

DRIVE-IN REAL ESTATE Richard M. Cullison, Realtor 12 1/2 E. Main St. - Emmitsburg Phone Hillcrest 7-5101

FOR SALE — Home made pan-baus, 3 lb. pan, 29c; Home-made sausage, 50c lb.; Fresh pudding, 35c lb.; pork chops, 39c lb.; meaty spare ribs, 39c lb. Quarters of beef at wholesale prices: Front, 39c lb; hind, 52c lb. Welty's Market, Emmitsburg, phone HI 7-3831. tf

FOR SALE All Types of Awnings ALUMINUM SIDING STORM DOORS & WINDOWS Fern Ohler - Gettysburg, Pa. Phone Edgewood 4-4612

NOTICES

NOTICE—We will be open from 1 to 2 p. m. Sunday, Dec. 25 and Monday, Dec. 26. Dave's Photo Supply, 244 Steinwehr Ave., Gettysburg.

NOTICE—48 hour processing on your Kodak movie and slide film at Dave's Photo Supply, 244 Steinwehr Ave., Gettysburg.

MERRY CHRISTMAS to our PATRONS and FRIENDS QUALITY FURNITURE Detour, Md.

CARD OF THANKS Mrs. Charles L. McClain and daughter wish to thank friends and neighbors for their kindness and sympathy following the sudden death of Mr. McClain. Also for flowers and notes of sympathy. It

CARD OF THANKS I wish to take this opportunity to express my profound appreciation to those kind friends and neighbors for their many acts of kindness, and especially to the Vigilant Hose Co., the Guardian Hose Co. and police for the assistance they rendered during the recent fire which damaged my home. It Mehrle F. Keilholz

YOU'LL BE SORRY—if you buy any piano before seeing the amazing Kimball Consolette with four exclusive tone-touch features. Kimball tone-boards are guaranteed for life. Menchey Music Service, 430 Carlisle St., Hanover. 1t

Notice Of Stockholders Meeting The regular Annual Meeting of the Stockholders of The Farmers State Bank, Emmitsburg, Md., will be held in the Director's Room of the bank on Tuesday, January 10, 1961 at the hour of 1:00 o'clock p. m. for the purpose of electing Directors for the ensuing year and for the transaction of such other business as may properly come before the meeting. Harold F. Birely, Cashier

GOVERNMENT SURPLUS SALES NOW anyone can buy DIRECT from U.S. GOVERNMENT SURPLUS DEPOTS, by mail for yourself or for resale. Cameras, binoculars, cars, jeeps, trucks, boats, hardware, office machines and equipment, tents, tools and tens-of-thousands of other items at a fraction of their original cost. Many items brand new. For list of hundreds of U.S. Government Surplus Depots, located in every State and overseas with pamphlet "How Government Can Ship Direct To You," plus procedures, HOW TO BUY and how to get FREE SURPLUS, mail \$2.00 to SURPLUS SALES INFORMATION SERVICES, P.O. Box No. 1818, Washington 5, D. C.

by age, sex and color. After the results of each step are weighed the two steps are then combined.

Looking Behind The Figures

Naturally, such a small sample leaves much room for error when the data are inflated to show an estimate of the total labor picture. Remember that only 35,000 households are interviewed out of a total of nearly 50,000,000 families in the country. Furthermore, the personal interview method has certain natural pitfalls. More often than not the housewife answers the questions. She may not have an exact knowledge of the circumstance of each member of the household. Or, the person questioned may be in a "bad mood" and thus unwittingly give inaccurate or incomplete answers. Local conditions and/or mass psychology could also contribute toward a distortion of answers given.

Aside from these "human" factors, unemployment figures should be adjusted by readers to take into account other distortions. For example, workers who are idled by strikes are included as unemployed. These, of course, do not truly reflect the state of the economy's health. In addition, workers who are temporarily laid off because of seasonal curtailments in activity are counted as unemployed. I also question whether sick workers, and housewives and students seeking "extra spending money," should be included.

Where Is The Real Problem And Cure?

At the present time, the Government estimates that over 4,000,000 people are unemployed. Historically speaking, this is still not a very burdensome figure. Considering the growth in population, this represents only a little over 5% of the labor force. Admittedly, there are "pockets of unemployment" in various sections which should receive help. Taking the country as a whole, however, the picture is more encouraging, especially when it is related to periods of normal business rather than war and super-boom times.

Readers of this column, therefore, should pay more attention to certain fundamental conditions which are threatening to make the unemployment problem worse than it now is. I fear that too many workers, whether individually or through unions, are pricing themselves out of the market. This is evident in the trend toward increased automation which, though ultimately beneficial to labor, could in the meantime make for greater unemployment. If wage costs increase much more, I fear that America will lose the race for world markets, and that foreign imports will cut deeper into domestic markets. Both of these conditions could contribute to joblessness.

Areas where unemployment is high should seek to create and attract new opportunities. This can best be accomplished by advertising local advantages, and, above all, by proving labor's willingness to work harder. Unless something is done, students now in colleges and high schools may be hard put to find a job later on.

THIS 'N THAT

GEORGE W. WIREMAN

The True Spirit Of Christmas

In these days of commercialized Christmas, one wonders if the old-fashioned observances of this great season are on their way out . . . to be lost forever in another two or three generations. We who are Christians are prone to shake our heads and bemoan the extent which the department stores and Santa Claus have gripped the imaginations of all people and have determined ways to observe Christmas.

In a way Santa cannot be ignored, for fully a month before Christmas our high-pressured advertising makes him the most prominent figure in our stores, newspapers, magazines, radio and television. There are catchy songs and delightful stories about him. The children next door and the children at school all talk about him.

And, aside from all the ballyhoo about him, he himself is an appealing fellow with his merry eyes, white beard, red suit, and jolly manner. Children and grown-ups, too, love him. He seems to answer a need in the human heart.

Our legendary Santa Claus is based on a real man: St. Nicholas, who was bishop of Myra, in Lycia, Asia Minor, during the 4th century. He was the son of a wealthy merchant and had the means to make the sort of gifts that continue to be associated with his legendary counterpart.

But Christmas is the birthday of our Lord Jesus Christ. That "God so loved the world that He gave His only begotten Son" is the significant truth of Christmas. The story of the baby in a manger, of the angel's message to the shepherds as they watched their sheep in the field, and the three wise men who followed the star to find a new-born king grows in beauty with each telling. It should hold the central place in the celebration of Christmas in the Christian home, as well as in the church.

"When they had opened their treasures they presented unto Him gifts, gold and frankincense and myrrh" . . . St. Matthew. This

custom of giving love gifts at Christmas time has continued throughout the centuries. It is a beautiful custom, this giving of gifts and drawing together of our loved ones and friends. If you would be happy and enjoy this day of days, thing not of yourself, but of others. Make an effort to brighten the life of some unfortunate, and the day will bring you many happy returns. This is the true spirit of Christmas.

There remains such a short time before Christmas and still there remains so much to do. That last minute shopping, those last few cards to mail, the cookies to bake, the Christmas pageants at church and school to attend. Our schedule is a heavy one at this time of year.

Finally Christmas Eve and the sentimentality of the lighted Christmas tree, and a candle burning in the window, all the presents beautifully wrapped and tenderly placed under the tree, the pleasure of friends stopping in for a short visit.

But why? All because one night nearly 2,000 years ago a particular child was born in a small town in one of the Roman satellite countries. His mother's name was Mary, the wife of a carpenter named Joseph. The new-born baby was Jesus.

To those of us who believe in the ultimate triumph of goodness because God reigns, there can be no question. All that is best in Christmas must survive . . . it cannot help itself because it is goodness itself . . . the beauty and wonder of God shining thru.

Even so, we as Christians must remember that Christmas is a special trust, to be guarded and treasured. No one can take it away from us, but we need to guard against letting it become atrophied from disuse or stored away for some future, more discerning generation to rediscover. So let us keep Christmas! Let us make it more than just some kind of holiday, for it embodies everything we hold dear. Is your imagination vivid enough to picture our world without Jesus ever

having been born? Mine isn't, I would hate to think what these United States would be like if the Saviour had never been born; there probably wouldn't have been a United States, if Christ had never been born. This Christmas, let us bring out the creche and the candles, the we live might never have existed, and the joys we share at Christmas time would never have been known, if Christ had never been born. (Continued On Page Eight)

FOR RENT

FOR RENT — 4 rooms and bath, back porch, parking space. Call HI 7-5511.- Mrs. G. R. Elder, Chronicle Building. tf

FOR RENT—Modern 4-rm. apartment. Reasonable rent. B. H. Boyle, Emmitsburg. tf

FOR RENT—Unfurnished apartments. Apply Mrs. G. R. Elder, phone HI. 7-5511. tf

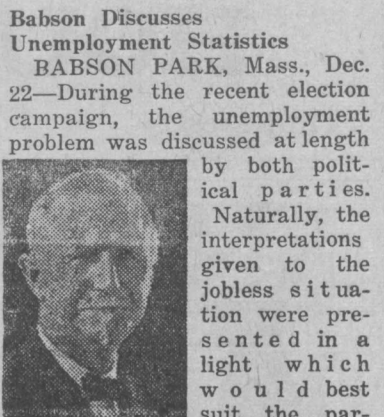
WANTED

WANTED — Scrap Aluminum, Copper, Brass, auto radiators, and other non-ferrous metals. Top prices paid. Gettysburg Foundry Specialties Co., Greenmount, Pa., call Gettysburg 884. tf

BABSON

Writes . . .

BY ROGER W. BABSON



Babson Discusses Unemployment Statistics BABSON PARK, Mass., Dec. 22—During the recent election campaign, the unemployment problem was discussed at length by both political parties. Naturally, the interpretations given to the jobless situation were presented in a light which would best suit the particular audience listening to each speech. Within the past few weeks, some projections of unemployment trends seem to bear out fears expressed during the election campaign. Government officials predict that a sharp increase in jobless workers may lie ahead. Unemployment Figures Are Statistical "Guesses" Once a month the Bureau of Labor Statistics releases its estimate of employment and unemployment. This is based on a mid-month survey by the Census Bureau in which approximately 35,000 households are interviewed in 330 selected regions throughout the country. The groups of households interviewed are rotated so that a given household will be questioned for four successive months during a given year.

The information obtained for the latest month is then compared with the preceding month's estimate of unemployment to derive a measure of the change which has taken place. The next step is to inflate the current data by the estimates of various population groups, viz.,



May your Christmas be a merry one.

J. WARD KERRIGAN

EMMITSBURG

MARYLAND



Wishing you a Merry Christmas

BIX-SWAY MEN'S SHOP

GETTYSBURG

PENNSYLVANIA



SEASON'S Greetings

MYER'S RADIO-TV SERVICE

GENE and LORETTA

EMMITSBURG

MARYLAND



Emmitsburg Pharmacy

EARL E. SHANK, Jr., B.S. PHONES 7-4821-7-4342 EMMITSBURG, MD.

EMMITSBURG

MARYLAND



Season's Greetings

ZERFING'S HARDWARE

GETTYSBURG

PENNSYLVANIA



Season's Greetings

We take this opportunity to express to our many friends our sincere appreciation for their loyalty and good will.

VILLAGE LIQUORS

"IN THE BEST OF SPIRITS"

CENTER SQUARE

EMMITSBURG, MD.

K. of C. Planning Pre-Lenten Dance

Thirty members were present at the regular meeting of Brute Council 1860, Knights of Columbus held Monday night in the council's home on the Square. Grand Knight Curtis D. Topper presided over the meeting. The Grand Knight announced that eight turkeys had been provided for delivery to indigent

families of the Mother Seton School. Richard Topper, chairman of a committee to purchase safety flags reported the flags had been received and had already been presented to the Mother Seton School patrol and that additional flags would be presented to the Public School at the January PTA meeting. A discussion was held as to whether or not the group wished to sponsor a pre-lenten dance and

it was decided to hold such an affair. Joseph Cy Haley was appointed as chairman of the dance committee. There will be no meeting on January 2 due to the New Year's holiday.

Shoots Buck

Richard Christensen, Executive Chef of Cherry Hill Inn, Hadonfield, New Jersey, and grandson of Mrs. Carrie Dern, Emmitsburg, recently bagged his first eight point deer at his hunting lodge, near Orttanna, Penna.

Mother Seton School Children Present Christmas Pageant

The Mother Seton School presented its annual Christmas program on Sunday in the school auditorium. Part one included Santa's Toy Shop by the first grade students. Part two, a play entitled "The Donkey and the Star," was given by the following cast: Announcer, Maureen Waters; Our Lady, Lynn Shorb; St. Joseph, Michael Byard; the Christ Child, Gregory Zoller; Menes, David Waters; Rebecca, Wilma Miller; Ruth, Sharon Fink; Judith, Josephine Rodgers; Amos, Edward Pryor; Jacob, Gary Cool; Daniel, Mark Walsh; Hosea, Edward Adelsberger; Esther, Kathleen Sanders; Samuel, David Marzola; Neophritis, Margaret Marshall; Bernice, Gloria Knott, and Charman, Gloria Orndorff. The time of the play was when the Christ Child was six and a half years old; the place, Matarieh, Egypt. Part three, a Christmas tableau, starring Fifth and Sixth Graders, with Jane Stahley as Blessed Mother, Raymond Baker as St. Joseph; the angels, Ava Hobbs, Wanda Rodgers, Kimberly Parks, Dale Elder, Connie Miller, Judy Rosensteel (soloist), and Joan Eiker; shepherds, David Ott, Stephen Wivell, Joseph Hobbs, Dale Kelz; Kings, Martin Williams, John Sherwin and Joseph Welty. The audience joined in the last number of "O Come All Ye Faithful."

Commissioners Slash Budget Requests

The sum of \$174,092 requested for capital outlay in the school board budget was deducted by the County Commissioners and will be provided from capital construction improvements funds, according to a release concerning the budget from the County Commissioners office this week. The Commissioners also made a general reduction of \$151,892 in the budget request from the school board. They said "Specific categories of where this amount will be deducted has been left to the discretion of the Board." The Commissioners had to trim approximately \$313,000 from total budget requests. The Board of Education was allocated approximately \$3,632,950 (including debt services), an increase of some \$238,698 over the 1960 appropriation, yet some \$400,000 less than that sought by the Board of Education. The Board of County Commissioners eliminated a survey requested in the budget for a saving of \$5,000 for the county. The survey was approved by the Board of Education, after considerable controversy rose on the size, duties and salaries of the administrative staff, and questions concerning instruction. The Commissioners said they felt this survey could be made locally in line with existing state recommended methods of staff organization. In an effort to alleviate some of the problems connected with acquiring teachers, the Commissioners granted funds for a \$300 across-the-board pay raise for teachers. This now brings the county teacher salary scale to a starting level of \$4,300 per year. However, this figure is still \$200 less than the starting salary paid by many neighboring counties. The Commissioners said they were sympathetic to the budget requests made by the Board of Education, but that some of the requests could not be granted in an effort to keep the tax rate at

its current level of \$1.88 per hundred of assessed value of real property.

They issued a joint statement in which they said "We have been very much aware that the real estate or general property tax has about reached its 'zenith.' It is hoped that other sources of tax revenue, sought by action of the Legislature can be obtained." "In the meantime, the Commissioners continued, "attempts will be made to ascertain practical reductions of various required governmental expenditures."

Church Services Scheduled

Rev. James T. Twomey, C.M., pastor of St. Joseph's Catholic Church has announced the following schedule for the holiday season: Friday is a day of fast and abstinence; Christmas Eve, confessions will be heard from 4 to 5:30 p. m. and 7:30 to 9 o'clock; High Mass at midnight; Christmas Day, Masses will be at 7, 8:30 and 10 o'clock, all Low Masses, with benediction of the Most Blessed Sacrament immediately following the 10 o'clock Mass; no evening devotions. The week after Christmas, daily Mass will be celebrated at 7 a. m.; Saturday, December 31, confessions will be heard from 4 to 5:30 and 7:30 to 9 o'clock. Special devotions of thanksgiving in New Year's Eve at 7:30 p. m. Sunday, New Year's Day, Masses will be at 7, 8:30 and 10 o'clock. The latter will be a High Mass followed by benediction. No evening devotions.

The program for the coming year was discussed. The new officers were briefed on their duties. Twenty-eight members were present at the meeting which was held on Friday evening, December 16 in the Rocky Ridge Fire Hall. Delicious refreshments were served after the meeting by Mrs. Farano.

Governor Taves Will Extend Greetings Over Air Lanes

Gov. J. Millard Taves and State Comptroller Louis L. Goldstein will present Christmas Greetings to the State of Maryland on Radio Station WCAO, Baltimore, on Christmas Eve, Saturday, Dec. 24 at 6:30 p. m.

Their greetings will be a part of the Concert of Christmas carols, presented by the State Employee's Chorus Group, under the direction of John Rohr.

The program will be pre-recorded in the lobby of the State Office Building, 301 W. Preston St., Baltimore, for broadcast on Christmas Eve.

Master of Ceremonies for the Concert will be Joel Dan Lehman, Director of Information for the State Comptroller's Office.

Hospital Report Admitted

Mrs. Robert Warthen, Emmitsburg. Josephine Ott, Emmitsburg. Robert Remavege, Emmitsburg.

Discharged Mrs. Frances Stinson, Emmitsburg. Gregory Kuykendall, Emmitsburg R1.

Mrs. William Usilton and infant daughter, Emmitsburg R2. Mrs. Kenneth Peterson and infant daughter, Emmitsburg R3.

Mrs. Emmet Eyler and infant son, Thurmont R2. Mrs. Mildred Dutrow, Emmitsburg.

Births Mr. and Mrs. Joseph Freeze, Emmitsburg, son Friday. Mr. and Mrs. William Beall, Rocky Ridge, son, Saturday.

Mr. and Mrs. John M. Mort, Fairfield, daughter, Monday.

Hospital Brochure Published

A new brochure, "The Children's Hospital Story," detailing largely in pictures the inspiring history and future plans of the re-known 50-year-old institution set atop wooded hills at Keyworth and Greenspring Avenues, Baltimore, is available to groups and individuals interested in the work of the hospital, Frederick L. Wehr, chairman of the board, announced recently.

The Children's Hospital, formerly Children's Hospital School, continues to provide care for sub-acute and chronic polio patients, according to Mr. Wehr, but is widening the scope of surgical services for children and adults, and is able to provide for those

who need acute care.

Pictured in the brochure are patients and staff members using X-ray, physical and occupational therapy equipment, important factors in the over-all treatment available at Children's. The well-equipped school room, available for long-term patients is shown, as is the attractive auditorium, setting for parties and shows to which patients walk, or ride in wheelchairs or on stretchers or beds.

Inquiries about the hospital and brochure should be addressed to Christian M. Christiansen, Administrator, The Children's Hospital, 3825 Greenspring Avenue, Baltimore 11, Maryland.

THIS 'N THAT

(Continued From Page 7) evergreen and the loving gifts! But above all, let us sing of Christ's birth and cause the flame of God's love to burn more brightly throughout the world. May the true spirit of Christmas abide in your hearts this holiday season.

Rocky Ridge 4-H Elects Officers

Marshall Sharrer Jr., has been chosen president of the Rocky Ridge Progressive 4-H Club for 1961. Douglas Valentine was named vice president; Betsy Hoyt, secretary; Sharon Lawrence, was named treasurer and Kathleen Etheridge, reporter.

The program for the coming year was discussed. The new officers were briefed on their duties.

Twenty-eight members were present at the meeting which was held on Friday evening, December 16 in the Rocky Ridge Fire Hall. Delicious refreshments were served after the meeting by Mrs. Farano.

Brownie Troop 71 meets

Brownie Troop 71 held its weekly meeting and Christmas party Monday night. After the meeting games were played, gifts exchanged and refreshments served.

PERSONALS

Mr. and Mrs. Joseph Rodgers and daughters have moved from the home of Mr. Rodgers' mother on N. Seton Ave., to the apartment at Bucher's Restaurant.

Sgt. William Timmerman, Philadelphia, spent the weekend with his parents, Mr. and Mrs. Fred Timmerman.

Mr. and Mrs. Charles Lake and daughter, Norristown, Pa., visited with Mrs. Lake's mother, Mrs. O. H. Stinson, over the weekend.

Miss Geraldine Little, Washing-

ton, spent the weekend with her parents, Mr. and Mrs. Roy Little and family.

Mr. and Mrs. James Nickoles and children, Westminster, visited on Sunday with Mrs. Nickoles' parents, Mr. and Mrs. Paul A. Keepers.

Miss Martha Jane Sherwin of Washington, spent the weekend with her parents, Mr. and Mrs. Paul Sherwin and family.

Patrick Shorb, son of Mr. and Mrs. Charles B. Shorb, celebrated his eighth birthday on Wednesday.

Mr. and Mrs. Michael Kelz, of Plattsburgh, N. Y., are visiting with his parents, Mr. and Mrs. William Kelz.

Mr. and Mrs. Willard Weikert and family, Gettysburg, visited on

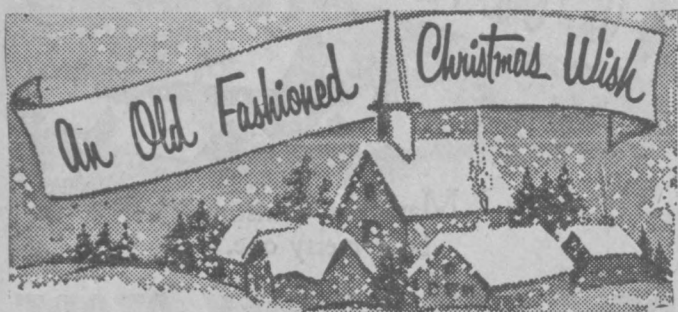
ABIGAIL

(Continued From Page 1)

ally to Santa. * * * After beating out 51 columns of news during the past year, many of them practically worthless in a news or entertaining sense, I must take this opportunity to extend to all of you my best wishes for a Merry Christmas from Abigail and the entire staff.

Sunday with Mrs. Weikert's parents, Mr. and Mrs. James Arnold.

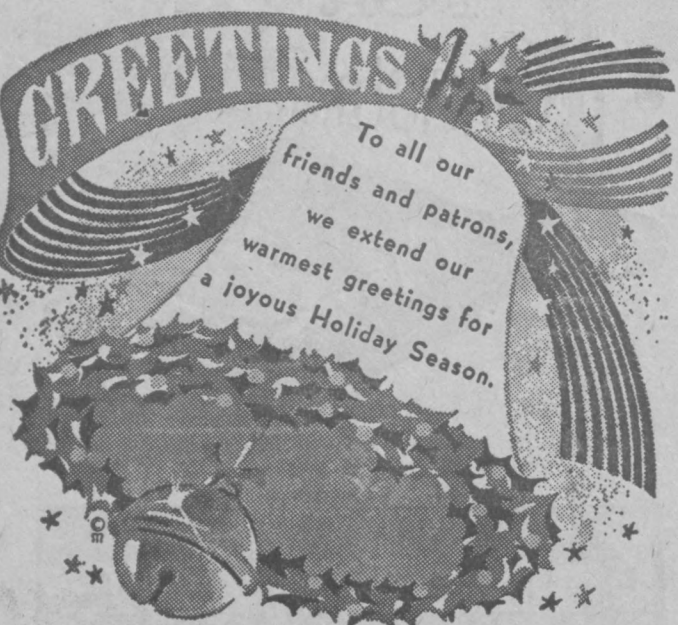
Mr. and Mrs. Charles Harner and Mr. and Mrs. Wilbur Overholtzer, Philadelphia, were recent visitors at the home of Felix Adams.



May your Christmas be a merry one.

THOMPSON'S

GETTYSBURG PENNSYLVANIA



HERSHEY'S MEN'S SHOP

GETTYSBURG PENNSYLVANIA



BOLLINGER'S MEAT MARKET

EMMITSBURG MARYLAND



"Peace on earth, good will to all men" is our heartfelt prayer at this holy Christmas season.

COFFMAN-FISHER

FINE DEPARTMENT STORES

LINCOLN SQUARE — GETTYSBURG

Last-Minute Items

We Have a Complete Line of **CAMERAS ... FILM ... FLASH BULBS ... BATTERIES**

NEWEST POLAROID FILM IN ALL SIZES

CROUSE'S

—OPEN ALL DAY SUNDAY—

Phone HI. 7-4382

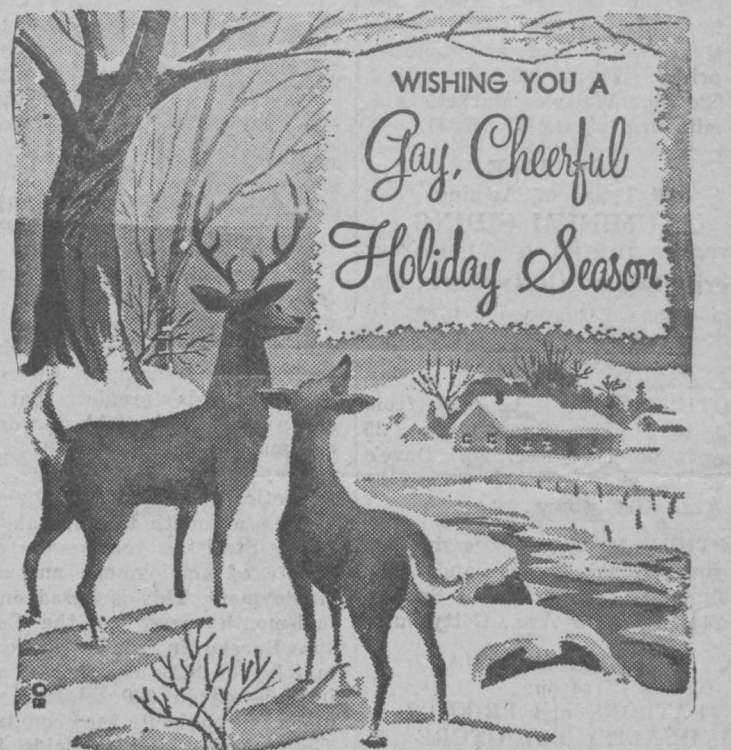
EMMITSBURG · MARYLAND



HOUCK'S

PHONE 3811

EMMITSBURG, MD.



BOLLINGER'S DAIRY

IDEAL FARMS DAIRY PRODUCTS

THURMONT

MARYLAND



May the joys of the Christmas Season be with you

Post 6658, Veterans Of Foreign Wars CENTER SQUARE

EMMITSBURG, MD.