



# Emmitsburg Chronicle

"READ BY MOST EMMITSBURGIANS"

VOLUME LXXIX No. 44

EMMITSBURG, CHRONICLE, EMMITSBURG, MARYLAND, FRIDAY, AUGUST 21, 1959

Weekend  
Weather Forecast

Warmer Friday and warm over the weekend. Scattered thunder showers over the period.

SINGLE COPY, 7c

## Most Anything At A Glance

BY ABIGAIL

Welcome Hawaii! Our 50th state comes into the Union today as President Ike signs the proper papers. The annexation of the Hawaiian Islands came less than a year after the Territory of Alaska and now the United States is stronger than before . . . and more territory to protect in case of trouble. We all know the military value of Hawaii though and the addition is a welcome one in more ways than one. I've often pondered as to which will be the next state after our Pacific neighbors are joined with us. Just where would another state come from? We'll apparently remain at the 50 figure for some time to come.

Trouble comes in bunches it seems. I was shocked this week after reading of the number of tragic events transpiring within our own Frederick County in a matter of days. First of course was our own local piece of bad luck when a young boy was shot and killed. The same day a 24-year-old man was drowned while trying to swim across a lake at Braddock Heights and the previous day a Shocks town man went berserk and brutally murdered his wife and then took his own life while officers and witnesses stood helplessly by. In addition to these mishaps three of our citizens passed away from natural causes. Let's hope the bad luck cycle has subsided for some time to come. That's the way it happens though, almost every time. No one dies for a few weeks then all sam hill breaks loose. Oh yes, I almost forgot. In addition to the above tragic events a Sabillasville man decided to end it all via the shotgun route.

While we sweeter here in the over 90-degree weather, a number of Emmitsburgians are on vacation partaking of what Mother Nature has to offer in the way of outdoor comforts. Quite a few headed for the seashore, another sizeable number to the mountains and still others in pursuit of sundry other means of enjoying a vacation. It's a small world though and almost wherever you go you will run into another Emmitsburgian or former Emmitsburgian. I seldom, if ever, had a vacation when I didn't run into someone from Emmitsburg and I'm sure most of you find the same thing. It really is enjoyable though to meet someone from the old home town when you are far far away. You really get friendlier unit in the big parade? Also, if you see them here daily about their chores.

Here's good news for the youth of today. Medical experts have predicted that the chances for a child born this year to live to the ripe old age of 70 are very good. Modern drugs, food processing, vitamins, and surgical skill have added longevity to the children of the future and indications are that things will get better as time goes by. Too late for the older element such as you and me, but welcome news anyway.

It's a little early yet but not too soon to think of entering some type of exhibit or float in the big Firemen's Parade here next month. Marching units, bands, bugle corps, floats, etc., are still needed to fill out the parade. It's sad but true, local entries are at a low ebb. The local firemen are to be host to the county convention and as such must accept the responsibility of promoting a parade, as is the annual custom. Quite a number of local citizens and businesses entered units in the big Bi-centennial Parade back in '57 and it is hoped that the same can be repeated. Most of you belong to some organization so why not see that it is represented and gains the proper recognition and prestige by entering a float or marching unit in the big parade. Also, if you know of some neighboring organization interested in entering the parade, please contact any member of the Fire Company. Let's make it a big one folks. Oh yes, there is \$500 in prize money awaiting the various winners.

Nickel coatings, through the use of specially developed plating baths, can be applied to rough surfaces to make them smoother.

## Fire Convention Parade Prizes Are Listed

The Vigilant Hose Company is offering \$500 in prize money to be distributed among the winners of the mammoth parade it will sponsor during the Frederick County Volunteer Firemen's Assn's Convention to be held here Sept. 9-10, the committee in charge announced this week.

Form letters advising marching units of the prizes have been mailed and anyone who has not received one of the letters and wishes to have one, it is urged that they contact George L. Danner, Emmitsburg, as soon as possible.

The Vigilant Hose Company will play host to the association here and in conjunction with the convention the Indian Lookout Conservation Club is holding a week-long carnival from Sept. 7 to 12. The convention is expected to draw a large crowd here and the local Fire Company announces the following list of prizes:

Best appearing company with apparatus and marching unit and band or drum and bugle corps—1st, 100; 2nd, 50. Best appearing Band not associated with Fire Co.—1st, \$60; 2nd, \$40. Best appearing Drum Corps not associated with Fire Co.—1st, \$60; 2nd, \$40. Best appearing company with most men in line of march without Band or Drum Corps—1st, \$35; 2nd, \$20. Best appearing Ladies' Auxiliary marching unit—1st, \$30; 2nd, \$15. Best appearing Fire Fighting Apparatus—1st, \$25; 2nd, \$15. Company with apparatus coming the longest distance—1st, \$25. Company with oldest apparatus in parade—1st, \$20. Best appearing Float—1st, \$25; 2nd, \$15. Most comical entry—1st, \$10; 2nd, \$5. Best appearing Antique Automobile—1st, \$15. Independent Marching unit—1st, \$20.

More than one prize will be given per unit and judges decision will be final. Winners will be announced at 10 p. m. on the carnival grounds.

## Former Mayor Derr Will Aid With Agriculture Census

Appointment of John A. Derr, Frederick, as a field assistant for the 1959 Census of Agriculture was announced this week by the Bureau of the Census, Department of Commerce.

Mr. Derr will direct a force of 17 crew leaders and 236 census takers in Maryland's 23 counties and in the Virginia counties of Accomack and Northampton.

Derr will enter on duty on September 14 and receive several days of training which will cover administrative procedures and other duties and responsibilities connected with the job. Mr. Derr will be responsible for recruiting the crew leaders who will enter on duty on October 19. The crew leaders will in turn recruit the census takers who will enter on duty on November 11.

The 1959 Census of Agriculture will collect information on the number and size of farms, acreage and harvest of crops, livestock production and inventories, selected farm facilities, selected farm expenditures, farm values, and mortgage debt. Information will be published for counties, states, and the nation.

## Dog Owners Must Obtain License

County Treasurer James H. Falk is planning a drive to sell dog licenses to county dog owners who have not applied for dog tags.

The sale of dog licenses to date is about 800 more than this time last year. Total tags sold this summer is 4,270.

The treasurer attributed some of the pick-up in sales to the new county dog deputy who has been working full-time since the first of the year.

About 800 dogs have been picked up by the deputy since January 1. These dogs were mostly strays and those which had been dropped by owners desiring to dispose of the animals.

Mr. Falk said the decrease in the stray population has materially reduced the damage done to livestock by dogs running at large. This decrease has been noted during the past several months.

Dog licenses are sold by the treasurer's office. Rates are \$1 for males and spayed females, \$2 for females, and \$10 for kennels.

## OBITUARIES

### ROSE MARY OTT

Rose Mary Ott, nine-month-old daughter of Mr. and Mrs. Thomas Ott, died at the Warner Hospital, Gettysburg, Wednesday after being a patient there for the past month.

The infant is survived by the following brothers and sisters, all at home: Thomas E. Jr., Raymond J., Donald E., Mary Louise, Patricia Ann, Allen S., Regina Mae, John B. and Anthony Lee. Surviving also are the paternal grandparents, Mr. and Mrs. Bernard J. Ott Sr. and the maternal grandparents, Raymond Coe, Taneytown and Mrs. Stanley Hoffman, Washington, D. C.

Funeral services were held on Thursday night at 7 o'clock in St. Joseph's Catholic Church, Rev. Martin J. Slesseman officiating. Interment was made in the church cemetery. Wilson Funeral Service was in charge of the funeral arrangements.

### MRS. HELEN M. VALENTINE

Mrs. Helen M. Valentine, 94, widow of Martin E. Valentine, died Saturday at the home of her son, Emory E. Valentine, Emmitsburg R2. She was the daughter of the late John and Anne Shorb Ohler.

Besides her son, she is survived by another son, Edgar Valentine, near Emmitsburg; one sister, Mrs. Jacob Stambaugh, Taneytown and one brother, Emory Ohler Emmitsburg; also 13 grandchildren, 25 great-grandchildren and seven great-great-grandchildren.

Funeral services were held on Tuesday afternoon at the Mt. Tabor Church, Rocky Ridge with the Rev. Donald Brake officiating. Interment was in the church cemetery. M. L. Creager and Son, Funeral Director.

### MISS ELLA N. KNIPPLE

Miss Ella Nora Knipple, 78, died at her home, 220 E. Main St., Emmitsburg, Wednesday morning at 8:15 o'clock after an illness of six weeks.

She was born in Frederick County, a daughter of the late Eli and Jennie Krug Knipple, and is survived by one brother, Harry Knipple, Emmitsburg.

Funeral services will be held Saturday at 10 a. m. from the Wilson Funeral Home, Emmitsburg, with the Rev. Philip Bower officiating. Interment in Mt. Tabor Cemetery, Rocky Ridge. Friends may call at the funeral home this evening (Friday) after 7 o'clock.

## Timonium Fair Starts Aug. 31

The seventy-eighth annual Maryland State Fair will open at Timonium August 31 with a record number of entries in all categories.

Exhibitors have entered the cattle, lamb, swine, poultry, and pigeon competition and horse entries have also set marks.

Entries in the home arts department will be accepted from 8:30 a. m. until 4 p. m. on Aug. 30 and 31.

The farm and garden department will receive entries from 10 a. m. to 9 p. m. on September 3 and 4. Certified grain and seed, honey and tobacco will be received Saturday through Monday, August 29 through August 31 from 9 a. m. to 5 p. m.

Other activities scheduled thru the end of the fair, September 12, include horse-pulling contests, a farm queen contest, parades and an entertainment program each evening.

More than 25 attractions have been booked for the midway and there will be eight running races daily.

## State Income Tax Revenue Greatest

Maryland income tax receipts for the month of July, 1959 were seventy-two per cent greater than for July, 1958, State Comptroller Louis L. Goldstein announced today. For the month of July just past, the gross receipts were \$8,640,762 as compared to \$5,008,882 for July a year ago.

Mr. Goldstein stated that it was expected that receipts for July, 1959 would increase approximately fifty per cent over July, 1958 as a result of the increase in rate of tax on salary and wage income, but that the actual receipts had gone considerably beyond expectations. During the month of July, he explained, the receipts from income taxes are principally from the second installment of declarations of estimated taxes and early reports of withholding from employers for the second quarter of the calendar year. Last July, he said, the rate of tax on such payments was 2% on salary and wage income, whereas for this past July the rate was 3%.

## Parking Meter Time Changed

All parking meter times have been changed it has been announced by the Burgess and Commissioners of Emmitsburg. The change is effective today, August 21 and violators will be fined. For a week now warning tickets only have been issued as it was thought only fair to let the public become acquainted with the new time of operation.

Mayor Clarence G. Frailey announced that the meters will operate on weekdays from 9 a. m. to 6 p. m. and on Friday and Saturday from 9 a. m. to 9 p. m. This applies to all parking meters in the town. Previously they operated from 8 a. m. to 6 p. m.

The Police Dept. has been ordered beginning today to enforce the new changes.

## LOCAL K. OF C. CONFERS FIRST DEGREE ON EIGHT

Thirty-five members were present at first degree installation services held at the regular meeting of Brute Council 1860, Knights of Columbus held in the council home Monday night, Deputy Grand Knight William E. Sanders presiding.

A communication from the Vigilant Hose Co. inviting the Council to participate in the Firemen's Convention parade here next month was read as well as a letter from the State Deputy.

A report on the recent crab feed sponsored by the group showed a net profit of \$379.09. Bernard Coleman was announced the recipient of the monthly 50-50.

Applications from four new members were received and voted on favorably. They were Leo M. Boyle, Patrick B. Boyle and Richard M. Sprankle.

Grand Knight Carl Bender of the Hagerstown Council was present and assisted Past Grand Knight Guy A. Baker Sr. with the conferring of the first degree. Candidates receiving the degree were Richard M. Sprankle, Charles E. Baker, Robert G. Gelwicks, James J. Mulcahy, Bernard M. Welty, Earle R. Gelwicks, Patrick B. Boyle and Leo M. Boyle.

The second degree will be exemplified here on Sept. 18 and the third degree as soon thereafter as possible.

## Recommends Divorce

The divorce of Joan A. (Ripka) Dombrowski, Littlestown R1, from Walter J. Dombrowski, Long Beach, California, is recommended by the master, Attorney Ronald J. Hagerman, in his return filed with the Adams County probate court's office. The couple wed February 17, 1950. Cruel and barbarous treatment and indignities are alleged.

## Hospital Report

### Admitted

Miss Virginia Crum, Emmitsburg.

### Discharged

Mrs. Fern Ohler, Emmitsburg.

Mrs. Robert Koontz, Emmitsburg.

Mrs. Bernard Ott and infant daughter, Emmitsburg.

### Births

Mr. and Mrs. Allen Davis, Emmitsburg, son, Monday.

## Grange Plans Community Show

The regular meeting of the Emmitsburg Grange was held held at the home of Mr. and Mrs. Raymond Keilholtz Wednesday evening with Master Bernard Welty presiding over the 23 members present.

It was announced that the food sale sponsored by the Grange would be held Saturday morning at the Fire Hall. The Fair Booth of the Grange at the Frederick Fair was discussed and it was decided there would be an exhibit from the Emmitsburg Grange.

The Grange decided to raise the dues 50c effective for 1960. The community show program was discussed and decided that the 4-H will have part in the program. The 4-H will chance off a purebred heifer calf at the Community Show. Let's help these youngsters by taking chances.

The election of officers will be held at the next meeting on Sept. 2 at the high school. The Master requests that every member be present at this meeting.

Delicious refreshments were served by the host and hostess after the meeting.

Largely through the use of strong, tough nickel alloy steels the automobile possesses rugged dependability.

## Topper Account Approved

Register of Wills Thomas M. Eichelberger released the first and final accounting of the estate of Maurice A. Topper on Wednesday. The Topper estate totalled \$11,881.37 including stocks and bonds and current money, according to the executor, Jacob E. Baker.

Disbursements from the estate totalled \$1,011.81, leaving a net estate of \$10,869.56 from which \$1,800 in tax free legacies were donated to Catholic churches and organizations.

These donations from the estate included \$250 to St. Euphemia's School, separate donations of \$250 and \$200 to St. Joseph's Church, \$100 to the National Shrine of the Blessed Virgin Mary and \$1,000 to the Society for the Propagation of The Faith.

The balance left for distribution, \$9,069.56 was reduced by \$290 by the distribution of \$10 each in inheritances to each of 29 nieces and nephews of the deceased.

Of the remainder of the Topper estate, \$462.50 was given to Roy E. Baker and a half share of the balance amounting to \$3,829.30, which had been bequeathed to the deceased Caroline R. Baker, also went to Roy E. Baker. The other half share, \$3,829.29, was bequeathed to the executor.

## LOCALS BOW TO HANOVER, 5-3

Fairfield eliminated Taneytown from a possible playoff spot in the Pen-Mar League by capturing an 8-7 victory Sunday afternoon on the Fairfield diamond.

In other games second place Hanover topped the last place Emmitsburg club 5-3 at Hanover while Blue Ridge Summit dropped Boonsboro, regular season champs, 6-2 on the Funkstown field.

Final games are scheduled for this Sunday. Boonsboro and Fairfield still have a postponed game to be made up but unless a tie in the standing results this Sunday the game is likely to be dropped.

Hanover	Ab	R	H
Lookinbill, 1b	4	1	1
Patterson, ss	4	1	2
Yost, cf	4	0	1
Bierly, p	4	0	0
B. Lehigh, c	4	0	0
Shoff, 3b	3	1	1
Scholl, rf	3	1	0
P. Lehigh, lf	3	0	2
Keffer, 2b	3	1	1

Totals	32	5	8
Emmitsburg	Ab	R	H
K. Swomley, 3b	3	1	0
Mort, cf	4	0	1
Joy, c	4	0	1
Little, lf	4	0	1
Ted Topper, 1b	4	0	0
Boyle, rf	4	1	1
D. Swomley, ss	4	0	1
Stoner, 2b	4	0	1
Sweeney, p	3	1	2

Totals	34	3	8
PEN-MAR LEAGUE	W	L	Pct.
Boonsboro	15	3	.833
Hanover	11	8	.579
Fairfield	10	8	.556
Blue Ridge	10	9	.526
Taneytown	8	11	.421
Emmitsburg	2	17	.105

Sunday's Scores
Hanover 5; Emmitsburg 3
Fairfield 8; Taneytown 7
Blue Ridge 6; Boonsboro 2
Sunday's Games
Boonsboro at Emmitsburg, 2 p. m.
Fairfield at Hanover
Blue Ridge at Taneytown

## Arthritic Registration Progressing Well

Tilton H. Dobbin, President of the Maryland Chapter of the Arthritis and Rheumatism Foundation and George A. Mouat, President of the Maryland Pharmaceutical Association, have agreed, due to the overwhelming response of the arthritis registration program which had been conducted during the month of July, that the registration of arthritis at all neighborhood drug stores will continue through the month of August.

To date more than 10,000 persons suffering from arthritis have registered throughout the state by signing cards and returning them to the Maryland Chapter of the Arthritis and Rheumatism Foundation.

The purpose of this state-wide registration is to supply regularly throughout the year commencing in the early fall medical information to those suffering from arthritis and to provide them also with information concerning treatment facilities.

The importance of this registration, the Maryland Chapter has pointed out, is that medical science can now prevent crippling in three out of four cases if symptoms are recognized early and treatment is begun promptly.

## INSURANCE GROUP WOULD INSTITUTE MERIT SYSTEM

Maryland's recently announced higher liability insurance rates are stirring more critical comment in view of a development last week in neighboring Pennsylvania.

The National Bureau of Casualty Underwriters and the National Automobile Underwriters Association—two of the country's major insurance rating organizations—reported that a "merit system" of fixing rates will be introduced shortly in Pennsylvania.

This serves to underline earlier criticism of the Maryland rate-jump by the Independent Insurance Agents Association of Maryland, Inc. The Association has a membership of 250 independent agencies with some 1,500 insurance salesmen throughout the state.

The Maryland agents opposed the increases when they were first put forward by the underwriting companies last spring, but the agents' suggestion to postpone any increase until further experience had been gained with the new merit system was turned down.

The present Maryland system bases rates on the driver's age, sex, marital status as well as the use to which his car is put. Young, unmarried male drivers, particularly those residing in Baltimore and the metropolitan counties, were hardest hit by the increases.

A merit system—such as California has had in operation since May 1 and Nebraska since August—bases a driver's liability premium on his record behind the wheel.

The California Safe Driver Plan, for example, rewards a driver who has been accident-free for two years with a 20% reduction from the regular rates. Drivers with one accident or "point" against them get a 10% reduction.

Two points against a driver means that he pays the regular rate, and for additional points, the rates go up accordingly. The rate for drivers with five or more points is double the standard rate.

Commenting on this plan, Mr. Joseph C. Flavin, president of the Maryland agents' group, said: "I feel that the California plan and others like it represent the fairest approach yet devised for setting liability rates."

"Drivers with clean records get reductions which they have certainly earned, while those with bad records are penalized in their pocketbooks for their reckless habits. Thus the overall cost of insurance is equitably distributed throughout the driver population. Nobody has to pay for the other fellow's carelessness."

One state insurance official, Deputy Commissioner John Coppage, has held out the prospect of liability rates based upon driving records as soon as the new point system becomes effective in Maryland in January, 1961.

The Agents' Association contends that present Department of Motor Vehicles records are adequate to form the basis of a merit rating structure. A spokesman for the National Bureau of Casualty Underwriters has backed up this contention.

But even so, an Association spokesman points out, there are several possible merit plans that would not require the use of official records. In view of these facts, the agents are asking—why wait until 1961?

Besides California, Nebraska and Pennsylvania, other states now implementing or considering merit rating systems include Ohio, Texas, Vermont, Iowa, Minnesota, Missouri, Florida and Michigan. In no case have the companies reported difficulty in obtaining sufficient accurate data for insurance purposes from official records.

## Mother Seton School Opens Sept. 9

Announcement has been made that the Mother Seton School will open on Wednesday, Sept. 9 beginning with a full day's schedule. County school buses will operate that day.

The Sisters of Charity, owners of the school, will be available for consultation with parents of students on weekdays beginning August 24 from 9 to 11 a. m. week days. All girl students will be required to wear uniforms by September 10.

A meeting of the school's executive board will be held on August 27 and the first meeting of the PTA will be held on Sept. 10 when the annual election of officers will be held.

The precious metal palladium is used extensively for contacts in communications and electrical apparatus.

## 6-Year-Old Boy Fatally Wounded

A nine-year-old Emmitsburg youth was guilty of fratricide when he accidentally shot and killed his six-year-old brother in their four room apartment in the rear of the Ora Miller property on East Main Street Tuesday morning, while their parents were away from home. The apartment is located over a garage in the rear of the property.

The nine-year-old, Gary Manning, who reportedly said he did not know why he shot his brother, was arraigned before Chief Judge Patrick M. Schnauffer, Tuesday afternoon on a technical charge of "being a delinquent child."

According to the story state police have pieced together from questioning the children, the five Manning youngsters ate their breakfast in the apartment. They watched television for a while, then decided to play cowboy. Gary got the shotgun from a closet and young Floyd got a shell from a drawer.

According to the children, the gun discharged when Gary Bumped his arm.

According to a report from the State's Attorney office, the nine-year-old was at home alone with his six-year-old brother, Junior Manning and a 11-year-old sister when the shooting occurred.

The boy told Judge Schnauffer that he obtained the shotgun from a closet and that his brother handed him a shell. Junior climbed upon a couch and a few seconds later the gun was accidentally discharged, the shot hitting the younger child in the face.

A sister was a witness to the shooting and neighbors reportedly had heard the two boys arguing with each other earlier in the day. Police reported the boy ran into a field adjoining his home after the shooting and buried the shotgun shell in the field. Junior was to be enrolled in the first grade this fall at the local public school.

State police were summoned to the scene and took Gary into custody. He was immediately taken to the Frederick Magistrate's Court. A warrant was sworn out by Trooper 1/c Lynwood Clark charging him with being a delinquent minor.

Others involved in the investigation were Troopers Davis and Morgan of the state police, Town Officer W. E. Law of Emmitsburg and Mrs. G. Plitt VonEiff of the Children's Aid Society, representing County Probation officer, Mrs. William C. Rodrick.

The child and his sister and mother were questioned briefly by Assistant State's Attorney Edward Lynch during the arraignment. They were later taken to the State Police Barracks for further questioning.

The mother of the children reportedly is employed by the Gettysburg Shoe Co. and was working at the time of the shooting. The father is currently unemployed and was not home at the time of the shooting.

Surviving are the parents, Floyd C. Manning and Mary Elizabeth Welsh Manning; a stepsister, Peggy Ann Welch and the following brothers and sisters: Mary Teresa, Shirley Loraine, Goldie Regina, John Michael and Gary Lee. Also surviving is his paternal grandmother, Mrs. Mary Ellen Manning.

Private funeral services were held Thursday from the Wilson Funeral Home Emmitsburg at 2 p. m. with the Rev. Philip Bower officiating. Interment was in the Bethel Cemetery, Highfield.

## Buys Registered Cow

M. F. Keilholtz, Emmitsburg, recently made an initial purchase of one registered Ayrshire cow from Maurice E. Meunier, Taneytown, according to the Ayrshire Breeders' Association Secretary, David Gibson Jr., of Brandon, Vt.

The transaction was recorded in the National Office of the Ayrshire Breeders' Association in Brandon, Vt. where complete registry records on all purebred Ayrshires in the United States have been maintained since 1875. Because of their ability to produce an abundance of 4% milk economically, the Ayrshire breed continues to become increasingly popular with dairymen throughout the country.

Rotor hubs for helicopters are made of nickel alloy steel because it provides the necessary high strength without adding excessive weight.



# Classified Ads

## FOR SALE

**ORGANS**—Lowrey and Kimball. We carry a complete selection for home or church use. Spinets and consoles in a large variety of styles and finishes. We have a model to suit your requirements. Budget priced at Menchey Music Service, 430 Carlisle St., Hanover.

**FOR SALE**  
All Types of Awnings  
**ALUMINUM SIDING**  
Fern Ohler, Phone HI. 7-3581

**FOR SALE**—Large 3-section shed Barn door and hardware. Annandale Rd. Phone HI. 7-4792. 8/21/59

**Pete's Bike Shop**  
West Main St., Cor. Altamont Ave., Thurmont, Md.  
New and Used Bikes  
Parts and Service  
Open Evenings 6:30 - 9:00 o'clock  
Leon Young tfp

**FOR SALE**—ABC Semi-Automat-ic washer; good condition. G. Eugene Rosensteel, phone HI. 7-4175. 1t

**FOR SALE**—6-rm. modern home, hardwood floor, full modern bath, oil hot water heat, cement basement, cement block garage, very large lot. Located at 351 E. Main St., Emmitsburg. For full information call Hillcrest 7-5101. Richard M. Cullison, Realtor, Drive-In Real Estate, 12 1/2 E. Main St., Emmitsburg. 8/14/59

## NOTICES

### MEN—WOMEN

### WITH AUTOMOBILES

### FULL OR PART TIME

Need Extra Money  
Between Jobs?

Contract to deliver new Telephone Directories in Emmitsburg, Keysville, Graceham, Frederick and surrounding rural areas.

See our Station Manager:  
Friday, August 28th  
9 AM to 5 PM  
AT

101 W. South St.  
(Optimist Boys Club)  
Frederick, Maryland

The Reuben H. Donnelley Corp.

**NOTICE**—The Emmitsburg Grange will have a food sale on Saturday, Aug. 22 at the Fire Hall beginning at 11 a. m. Entries in the baking contest will be judged and sold in conjunction with the sale. 8/14/59

**NOTICE**—Penny Bingo, Tuesday, Aug. 25, 7:30 p. m., sponsored by St. Joseph's Church Sodality, at the rectory grounds. Prizes, refreshments, door prize. Home-made cakes and candy. Should it rain, the affair will be held in St. Euphemia's Hall. 8/14/59

**FOR RENT**—Furnished 4-bedroom house near Mt. St. Mary's; automatic heat. Sept. 15 to June 15. Phone HI. 7-4792. 8/21/59

**NOTICE**—Emmitsburg home-owners! When you are ready to connect to the new sewer line contact us for free estimate to do the complete job. Ralph W. Stonesifer, phone PLYmouth 6-6454, Keymar, Md. tf

**REAL ESTATE FOR SALE**  
One of the most desirable prop-erties in Emmitsburg. Central-ly located. Large frontage. For further particulars, interested persons call in person.  
J. WARD KERRIGAN  
Real Estate Broker  
Emmitsburg, Md.

**NOTICE**—We are now repairing all make Sewing Machines and vacuum cleaners at the Emmitt Sewing Center, 402 W. Main St., Emmitsburg, phone HI. 7-2273. Free estimates, prompt service. All work Guaranteed. 1t

**WANTED**—Scrap Aluminum, Copper, Brass, auto radiators, and other non-ferrous metals. Top prices paid. Gettysburg Foundry Specialties Co., Green-mont, Pa., call Gettysburg 884. tf

**WANTED TO BUY**—ANTIQUES, furniture, glass, china, penny banks, electric trains, clocks, toys, dolls, postcards, coins, muzzle loading guns and pis-tols, county histories, Atlases, buttons etc. Hess Antiques, 239 Chambersburg St., Gettys-burg, Pa. Write or phone 619W. 11/7/59

**Your Baby's First Shoes Bronze Plated in Solid Metal**  
"They Last Forever"  
\$5.95 a Pair  
Satisfaction Guaranteed  
"Also Selection of Metal Mounts"  
Ray Eyer, Water St. Thurmont tf

**MOTHERS**—Be a part-time "ca-reer woman". High earnings. Enjoyable neighborhood work. 15-20 hrs. weekly. Earn \$1.95 hourly while you learn. Dial Hagerstown REgent 3-7980 or write Manager 2730 Pennsylv-ania Ave., Hagerstown, Md. If rural give directions. 8/14/59

**Quality Furniture**  
Detour, Md.  
Announcing Store Hours  
1 to 4:30 p. m. — 6 to 9 p. m.  
Every day except Tuesday start-ing Monday August 17  
Thanking all who have been pa-tient during my recent illness. Will endeavor to give better service, quality and prices to all. New fall styles and fabrics on Livingroom Suits.  
COME — SEE — SAVE  
Charles W. Albaugh  
8/14/59

**WANTED**—Several men to do ma-chine and carpenter work in a prospering business. Experience not necessary. Taney Supply and Lumber Corporation, Taneytown, Md. 8/14/59

## WANTED

Holstein Heifers or Young Cows.

Due Within six weeks.

Purebred or Grade.

Will pay Good Prices.

## B. J. ROBERTS FARMS

Fairfield RD 2

Phone Fairfield 145R4

Mr. Gembe

8/21/59

**FOR RENT**—3 - rooms and bath furnished apartment. Apply D. L. Beegle, Emmitsburg. 1t

## PERSONALS

Mr. and Mrs. Arthur Santinille and children, Emiel and Lynette, returned to their home in Hempstead, L. I. after spending a week with Mrs. Santinille's moth-er, Mrs. Flora Eyer.

Mrs. Elmer Sweeney and twin sons, of Thurmont, visited with her parents, Mr. and Mrs. Ber-nard Kelly, Sunday.

Mr. and Mrs. Joseph W. Shoemaker spent the past weekend visiting Mr. Shoemaker's mother, Mrs. Mabel Grange Shoemaker in Muncy, Penna.

Mr. and Mrs. Donald Long and family have moved from a prop-erty on the Dry Bridge Rd. to West Main Street.

Mr. and Mrs. John Baumgard-ner, Emmitsburg and Mr. and Mrs. Lloyd Wilhide, Keysville, spent last week at the University of Illinois, attending the Ameri-can Institute of Cooperatives con-vention. They also visited the home of Lincoln in Springfield.

Thomas Stoner and John Ran-dolph vacationed in Ocean City last week.

Dr. and Mrs. Robert L. Jar-rett of Richmond, Va., are guests this week of her sister and broth-er-in-law, Mr. and Mrs. Joseph W. Shoemaker, E. Maint St.

Mr. and Mrs. Santinille and children and Mrs. Flora Eyer, visited Saturday with Mrs. Eyer's sons, Clarence and Sterling Eyer, of York.

Mr. and Mrs. Paul Keepers vis-ited with their son-in-law and daughter, Mr. and Mrs. James Nickoles and family, Westminster, Saturday.

Recent visitors at the home of Mr. and Mrs. Kenneth Vaughn were Mr. and Mrs. Harry Kuhn and children, Waynesboro and Mr. and Mrs. Ralph Vaughn and fam-ily, Harney.

Mr. and Mrs. Milburn Glass, near Emmitsburg and FTC and Mrs. Herbert A. Glass and chil-dren, Michael and Debra of Nor-folk, Va., returned here Friday from a week's visit with Mr. and Mrs. Earl M. Glass and son, Eric, Freeport, Maine. While in Maine, the Glass' visited several inter-esting points and islands of the Casco Bay, the desert of Maine and Bradburg Mountain State Park. Chief and Mrs. Glass and children spent the weekend at the home of Mr. and Mrs. Milburn Glass before returning to their home in Norfolk where he is sta-tioned aboard the USS Henly (DD 762). Chief Glass' ship was one of 28 ships from the Atlantic Fleet which participated in the much publicized Operation Inland Seas and cruised the Great Lakes from June 15 to August 5. Other visitors Sunday at the home of Mr. and Mrs. Milburn Glass were Mr. and Mrs. William Sheeley and children, Ronald, Shirley and Betty Jean.

Eddie Adelsberger celebrated his 10th birthday Saturday.

Mr. and Mrs. Walter F. Crouse visited relatives in Philadelphia on Tuesday.

Mrs. William MacKenzie and children, Paul, Laura, Joyce and Billy flew to England Tuesday, August 11 to be with her husband who is stationed with the U. S. Air Force in England since last March. He will be stationed there for three years. Mrs. Macken-zie is the former Beaulah Glass, daughter of Paul Glass, Emmits-burg.



**FAMOUS TWINS NAMED:** Naming the twin calves of someone as famous as Elsie the Cow was quite a trick . . . but it's been done. Almost 3,000,000 Americans and Canadians suggested names, and Larabee and Lobelia were selected. The twins seem pleased at the nationwide announcement of their names. The winning names were submitted by Mrs. F. E. Johnson of Anaheim, California.

Wedding invitations have been issued by Mr. and Mrs. Roy Wil-vell for the marriage of their daughter, Helen Josephine, to Sheridan Edward Reaver, Satur-day August 29, at 9:30 a. m. in St. Anthony's Shrine.

Dr. and Mrs. Oliver DeCamp, Lakeland, Fla., were guests this week of Dr. and Mrs. D. L. Beegle.

## Fuel Tax Receipts Indicate Increase

State Comptroller Louis L. Goldstein today announced that Motor Vehicle Fuel Tax receipts for the month of July, 1959, the first month of the current fiscal year ending June 30, 1960, total-ed \$4,952,670.94.

A total of \$350,174.92 was re-fund to taxpayers during the month.

The net receipts of \$4,602,496.02 exceeded the net receipts of \$4-217,533.48 in July, 1958, by \$384-962.54 or 9.13 %.

## STATE THEATER

THURMONT, MD.  
Phone 6841

Fri.-Sat. Aug 21-22

Mark Damon - Dorothy Johnson  
"Life Begins At 17"

Shows Friday at 8:50 only  
Saturday at 3:00-6:00-9:00  
PLUS  
Guy Madison  
"The Hard Man"  
in Color  
Shows Friday at 7:15 - 10:05  
Plus Cartoon

Sun.-Mon. Aug 23-24

Robert Wagner - Jeffrey Hunter  
"In Love And War"

In Color and CinemaScope  
The Great Story of the U. S. Marines  
Shows Sunday at 7:00 - 9:15  
Monday at 7:15 - 9:23  
Plus Cartoon

TUES.-WED.-THURS.

**CLOSED**

Starts Sunday, Aug. 30  
Lana Turner - Sandra Dee  
"Imitation Of Life"

## PUBLIC SALE

SATURDAY, OCTOBER 3, 1959

Full line of Farm Machinery and extra line of Regis-tered Holstein Cattle. Some Household Goods. Located two miles southeast of Emmitsburg on Keysville Road.

Mr. and Mrs. Raymond Baumgardner

EARL R. BOWERS, Auctioneer

## NEIGHBORS ESSO STATION

Special Line Of Tractor Tires  
Now Available

LUBRICATION & ACCESSORIES

OUR SPECIALTY THIS MONTH!

CAR WASHING AND SIMONIZING

## NEW FOREST PARK, Hanover

SATURDAY, AUGUST 22

All Amusements Open

SUNDAY, AUGUST 23

Free Show By Texas Bill And His Drifting Pals

Hold Your Picnic Here. Phone MEIrose 3-5286

## Safety Tested SPECIALS

	Was	NOW
1959 Fiat 600 Sdn. . . . .	\$1448	\$1348
1958 Ford 2-dr., R&H . . . . .	1895	1695
1956 Olds Super 4-dr. . . . .	1795	1495
1953 Buick Hardtop . . . . .	695	495
1949 Pontiac 4-dr. Sdn. . . . .	295	195

### WE FINANCE OUR OWN CARS

'59 Fiat 1100 4-dr., H	'56 Olds Super 4-dr. Holiday
'59 Fiat 600 sdn., H	'56 Ford 4-dr., R&H
'59 Corvette conv.	'56 Chevrolet 4-dr.
'59 GMC 354 V tag	'55 Mercury 2-dr.
'59 GMC 152 pickup 3/4-ton	'55 Pontiac Catalina cpe.
'59 GMC 103 pickup 1/2-ton	power
'59 Cad. 62 sdn., power	'55 Olds 88 Holiday cpe
'59 Pontiac conv., power	'55 Pontiac 870 4-dr., R&H
'58 Cadillac conv. power	'55 Ford 2-dr., R&H
'58 Pontiac Star Chief 4-dr.,	'55 Olds Super 4-dr. Holiday
power	power
'58 Ford Victoria, power	'55 Cadillac 62 sdn. R&H
'58 Pontiac 4-dr. sdn., R&H,	'55 Olds 88 sdn., R&H
power	'54 Olds 88 2-dr., R&H
'58 Ford 2-dr.	'53 Pontiac 4-dr.
'58 Olds 88 Holiday cpe., blue	'53 Olds 2-dr., power
'57 Chev. 4-dr. wagon, power	'53 Olds 88 4-dr., R&H
'57 Olds 88 sdn., R&H	'53 Pontiac 2-dr., Hyd.
'57 Olds Super 88 sdn., power	'53 Pontiac station wagon
'57 Chevrolet 6 2-dr.	'53 Olds Super 4-dr.
'57 Dodge V-8 4-dr.	'53 Buick cpe.
'57 Cadillac cpe. R&H, power	'52 Buick 4-dr.
'57 Cadillac Fleetwood, blue	'51 Buick 4-dr.
'57 Oldsmobile 88 Holiday	'50 Olds 88 4-dr.
'56 Chev. hardtop cpe.	'50 Pontiac 2-dr.
'56 Buick Riviera	'49 Pontiac sdn.
'56 Olds Super 88 4-dr.	'49 Pontiac 2-dr., R&H

## GLENN L. BREAM, INC.

PAUL R. KNOX, Manager  
Oldsmobile, Cadillac and GMC Sales and Service  
100 Buford Avenue Gettysburg, Pa.  
Opening Evenings Until 9 P. M.—Phone 336 or 337  
GET A QUALITY DEAL FROM A QUALITY DEALER

## REXALL BIG X SALE

MON., AUGUST 17 thru SAT., AUGUST 29

X marks the spot where the savings are found

As advertised in THIS WEEK MAGAZINE, PARADE, FAMILY WEEKLY, SUNDAY NEWSPAPERS . . . and on REXALL'S TV SPECIAL with an ALL-STAR CAST on NBC-TV, SUNDAY, AUG. 16.

**FREE!** 100 MOTOROLA 17" PORTABLE TV SETS to be given away by Rexall Drug Stores. Come to and see how you may win!

### X Marks the Spot for HAIR BEAUTY VALUES

**NEW REXALL FAST PERMANENT 2.00**  
Makes all other home permanents old-fashioned!

**BRITE SET HAIR SPRAY by Cara Nome**  
11-oz. Aerosol Reg. \$1.39 98c

**X BOBBY PINS**, 60 per card, Reg. 25c...Now 19c, 2 for 35c, 3 for .50  
**X BRUSH & COMB SET**, Brush with matching comb. \$3.50 Value 1.88  
**X REX-RAY HAIR DRYER**, hot & cold switch, Reg. \$5.95... 4.99

### X Marks the Spot for BACK-TO-SCHOOL BUYS

**NON-ZIPPER BINDER**  
with perpetual calendar  
\$1.50 Value Special 79c

**VINYL LUNCH KIT**  
with Vacuum Bottle  
\$2.98 Value 1.98

**X PENCIL & PEN PACK**, 12 pencils, 3 ball pens, eraser.  
Reg. \$1.44

**X ZIPPER BINDER** with Space Map Cover. \$1.98 Value 1.39  
**X WASTE BASKET** with world map design. 98c Value .66

**DANE'S SACCHARIN TABLETS**  
1/4-gr. 1,000's Reg. 55c Stock up for the whole year! 29c

**FREE Large Size REXALL TOOTH PASTE**  
with purchase of Giant Size  
\$1.36 Value 83c

**YOU CAN DEPEND ON REXALL PRODUCTS**

## PEOPLES DRUG STORE

THE REXALL DRUG STORE

"Over 60 Years of Dependable Service"

26 York Street Phone 1437 Gettysburg



## Great Pentecost Window



The thousands of people who annually see the great woodcarving of the Last Supper in The Upper Room chapel, Nashville, Tennessee, will now also view a great stained glass window depicting Pentecost and heroes of the faith who have had a large share in bringing the Christian message to our day.

The above medallion shows the Disciples after the day of Pentecost as they became witnesses. The Upper Room chapel is in the headquarters building of The Upper Room, a devotional guide circulated around the world and published in 37 editions and 30 languages.



# Emmitsburg Chronicle

EMMITSBURG, FREDERICK COUNTY, MARYLAND

Published weekly on Friday by the CHRONICLE PRESS INCORPORATED, 1000  
Seton Avenue, Emmitsburg, Maryland. Telephone HILcrest 7-5511.

CHARLES ARTHUR ELDER, Editor-Publisher

All Communications and Checks Intended for This Paper Should Be Addressed and  
Made Payable to the CHRONICLE PRESS INCORPORATED, Emmitsburg, Md.  
Copy for Advertisements Must Be Received in This Office Not Later Than Wednesday  
Evening to Insure Publication in the Current Week's Edition. Advertising Rates  
Furnished Upon Request. Subscription Rate, \$3.00 Per Year in Advance.Entered as Second Class Matter at the Postoffice at Emmitsburg, Maryland, under  
the Congressional Act of March 3, 1879.Member of Maryland Press  
Association, Inc., and Pennsy-  
vania Newspaper Publishers Assn

## BABSON

### Writes . . .

BY ROGER W. BABSON

Babson Discusses Old  
Furniture As An Investment

BABSON PARK, Mass., Aug. 20—Many of my readers will be visiting their old homesteads during the summer. I urge them to go up into the attic and see what it contains in the way of discarded furniture. There may be something of value which was brought from New England by your grandparents or great-grandparents.

#### Story Of A Poor Teacher

When I first met Miss Helen Temple Cooke she had borrowed \$1,000 to start a small private school for girls in Wellesley, Mass., which she named

"Dana Hall." Around that time I started a small school for boys in Wellesley. Miss Cooke and I became very good friends helping each other in many ways. She came to me one day and asked if I had any ideas about investments for a "poor school teacher"! She added that she had been thinking of buying old furniture, of the proper periods, believing that this would gradually become more valuable. I agreed that her plan seemed wise. Thereupon she started to put her savings of a few hundred dollars a year into carefully selected old mahogany furniture secured from old attics, auction rooms, and wherever she could find something which could be properly restored.

Some two years ago Miss Cooke Passed on to a better world and left this furniture to Dana Hall (which has become a very well known institution). As the school is now raising money for new buildings, the Trustees have decided to auction off this old furniture and other treasures—for which Dana Hall should get around \$100,000.

Stuffed Furniture Of No Value  
The fact that a thing is old does not necessarily make it

valuable. Stuffed furniture — however old—is of little value; old books, in general, sell at auction for perhaps 20c each; and old pictures have little value. But if the furniture is made of mahogany and is of the right period, it makes little difference how badly it may be broken. An antique dealer can usually replace a missing part.

Another thing to look for is old glass. Unfortunately, copies have been made by modern glass makers which are now sold in the dime stores. Almost every grandmother, however, has a few pieces of actual Sandwich glass. A set of half a dozen of these goblets should be valuable even if your grandmother is still using them in her kitchen.

Certain kinds of old-fashioned jewelry have a good market, but such items should be appraised by an accredited jeweler. Any diamonds acquired over fifty years ago would have to be recut in order to be salable today. Old gold and silver however, always have a value, selling by weight. An antique dealer is usually interested also in old broaches even if they did not cost much at the time. Modern costume jewelers have not copied all of these broaches because of the labor involved.

#### Stamp Collections May Have Value

Many young people collect postage stamps. I saw an album the other day which had only two stamps of any worth out of a collection of five thousand, but these two stamps are valued at several hundred dollars each. Foreign stamps are not often worth much. The World Wars have upset foreign countries; furthermore, some of the newer countries are constantly printing new issues in order to sell them to collectors, and this disturbs the foreign stamp market.

I advise interested young people to confine their collection to U. S. stamps. Old letters found in attics may have some old United States stamps on them that could be sold at a good price to an honest dealer. Probably your public library has a stamp catalogue which will give you a price quotation for each of these U. S. stamps.

What Causes Inflation?  
The government can always print more money. Therefore money in the bank or elsewhere is not a good hedge against inflation as it may become slowly but constantly of less value. An inflation hedge should be something whose supply cannot be increased — such as ocean-front property and underground resources. The same principle applies to old mahogany furniture, Sandwich glass, and old

## CONGRESSIONAL VIEWPOINT

By Senator John Marshall Butler

### A Neglected Friendship

A few years ago, a popular song appeared whose refrain ran, "Friendship friendship, just a perfect blendship; when other acquaintances are long forgot, ours will still be hot." Marylanders might be pardoned for taking issue with this happy prophecy in regard to their own Friendship Airport. Despite a passenger increase of 36% this July over the same period last year, a soon-to-be-announced agreement between France and the United States for direct jet service between Baltimore and Paris, and the near perilous congestion of National Airport in Washington, Friendship Airport continues to be ignored by the airlines and the Civil Aeronautics Board. The reluctance of the airlines to shift operations from one terminal to the other is all too understandable: Why bother to provide adequate service at Friendship when every year 75,000 passengers make the 40-mile trek to and from Baltimore to use National? However, apparent lack of interest by the CAB is not so easily explained.

More than three years ago, the Greater Baltimore Committee filed a petition for relief from what it contended was inadequate service at Friendship. A year later,

U. S. postage stamps. This is a good test to apply when buying anything for your home.

the GBC consolidated its petition with a CAB examination of the adequacy of service at National. In September, 1957, a CAB examiner held preliminary hearings which were followed in November, 1958 by formal hearings by the full CAB. It is now nine months since that hearing and an inquiry at the CAB last week exacted the reply that the Board is "actively working on it," although a more honest answer might have been, "we are actively not working on it."

A CAB decision will not be a cure-all for the problems of Friendship, but an effective solution depends heavily upon the inadequacy of service being corrected by the agency. And time is running out. In late 1961, the wholly federally-financed airport at Chantilly will open for business, and as the Baltimore Sun stated in a recent editorial: "Friendship has a unique opportunity to show how heavily it can draw from the surrounding territory, particularly from Washington and the South by offering a first-class service. This will be the time of testing, to see whether the vicious circle of too-few-passengers-too-few-planes can be cracked."

The circle will be split if the CAB breaks its self-imposed silence and orders the airlines to provide service commensurate with the needs of better than three million people who reside within a thirty-mile radius of Friendship. Marylanders will then prove that when the service is there, the passengers are too.

## Civil Service Applications Now Being Accepted

Applications are being accepted by the Board of U. S. Civil Service Examiners at the National Institutes of Health in Bethesda, Maryland for Pharmacologist positions paying \$5,430 to \$12,770 a year and for Biological Research Assistant positions, paying \$4,040 a year.

Pharmacologist positions are located principally in the National Institutes of Health in Bethesda, Maryland, and the Food and Drug Administration in Washington, D. C. Applicants must have had appropriate education and experience (appropriate education alone may be qualifying for positions paying \$5,430).

The Biological Research Assistant positions are mainly with the National Institutes of Health in Bethesda, Maryland. Appropriate education or experience is required.

Full information regarding these positions is contained in Announcement No. 202B (Pharmacologist), and in Announcement

No. 203B (Biological Research Assistant). These announcements and application forms may be obtained at many post offices throughout the country, or from the U. S. Civil Service Commission, Washington 25, D. C. Applications will be accepted until further notice.

## FREE HELP WITH YOUR FARM ELECTRICAL PROBLEMS

CONTACT  
POTOMAC EDISON CO.

## SCRATCH PADS BY THE POUND!

No Need to Use Expensive Tablet Paper for Scrap Paper Now. Various Assortment of Scratch Pads in Different Colors, Sizes and Weights. Reasonably Priced at 20c a pound.

CHRONICLE PRESS & ASSOCIATES  
Phone HI. 7-5511 Emmitsburg, Md.

## USED CARS - TRUCKS

1958 Ford Custom Ranch Wagon, V-8, R&H, Fordomatic.  
1957 Ford Country Sedan V-8; R&H; 2-Tone.  
1957 Ford Custom 300 Tudor V-8; 2-tone; very clean.  
1955 Ford Fordor V-8; Fordomatic; R&H; very clean.  
1953 Ford Tudor, R&H, V-8.  
1953 Buick Convertible; R&H; Clean.  
1953 Rambler Station Wagon, 6-Cylinders; O.D., R&H.  
1953 Dodge 4-Door Sedan; Heater.  
1953 Chevrolet Tudor, R&H.  
1951 Plymouth 4-Door; R&H.  
1949 Plymouth Fordor; R&H; Good Tires.  
1949 Ford Fordor, R&H.  
1949 Mercury Fordor, R&H; O.D.

## Sperry's Garage

Phone HI. 7-5131

Emmitsburg, Md.

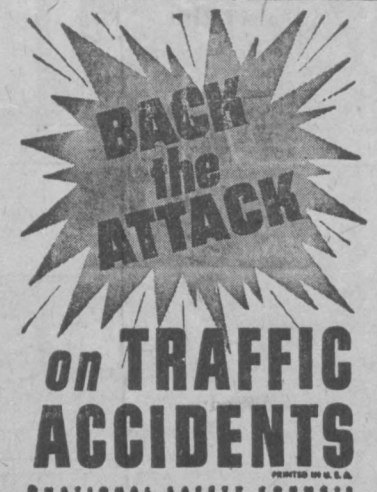
## Have Grooming Kit . . . Will Travel!



Family car trips are a favorite form of summer vacation. If you're off to the highways and byways soon, make your trip pleasant and memorable by driving carefully — and stopping frequently to stretch and freshen up. Such "breaks" are particularly important if there are youngsters along, for a quick romp will do wonders to restore everyone to good humor.

A sturdy cardboard box filled with grooming essentials — and kept handy in the car — is a boon to traveling families, the makers of Trushay point out. Include cleansing tissues, safety pins, comb, brush, bobby pins, a small sewing kit, scissors and nail file, small sizes of your favorite grooming products.

Especially valuable is a versatile lotion such as Trushay, that can help counter the drying effects of wind, dust, sun, harsh soaps and towels — and double as a powder base. Remember, a vacation should be relaxation — so plan to stop as well as go, and you'll return safe, happy, and looking your best.



## CLUB CALENDAR

Amalgamated Clothing Workers Union meets the 4th Thursday of the month at 7:30 p. m. in the VFW Annex.

American Legion, 1st. Tuesday.  
American Legion Auxiliary, 1st. Tuesday.

Boy Scouts, every Tuesday.  
Blessed Virgin Sodality, third Monday.

Burgess and Commissioners, 1st Monday.

Community Fund, last Monday.  
Chamber of Commerce, third Tuesday.

Emmitsburg Municipal Band, rehearsal every Monday evening at 8 o'clock, VFW annex.

Girl Scouts, every Friday at 4:00 p. m.

Grange, 1st and 3rd Wednesday at 7:30 p. m.

Holy Name Society, 3rd Tuesday at 7:30 p. m.

Homemakers Club, 4th Thursday.

Indian Lookout Conservation Club, 4th Tuesday, 7:30 p. m.

Knights of Columbus, 1st and 3rd Mondays at 8:00 p. m.

Lions Club, 2nd and 4th Monday at 6:15 p. m.

Luther League, 1st and 3rd Sunday.

Lutheran Church Council, last Tuesday.

Masonic Lodge, 2nd and 4th Thursday at 8:00 p. m.

PTA, Emmitsburg Public School, 4th Wednesday.

PTA, St. Joseph's High School, 2nd Tuesday, 8 p. m.

PTA, Mother Seton School, 2nd Thursday.

United Lutheran Church Women 1st Thursday.

Vigilant Hose Co., 2nd Tuesday at 7:30 p. m.

Veterans of Foreign Wars, 1st Wednesday.

VFW Auxiliary, 1st. Thursday.

- ROAD STONE
- FREE STATE MASONRY MORTAR
- READY-MIXED CONCRETE
- MASONS' LIME
- AGRICULTURAL LIMING MATERIALS

## M. J. GROVE LIME COMPANY

Phone Thurmont 6381 — Frederick MO. 2-1181

## ATTENTION!

## Members of the Gettysburg Moose

—FREE PRIZE GAME EVERY FRIDAY NIGHT—  
Free Prizes Awarded — Come in and Win!

## DANCE THIS SATURDAY NIGHT

PAT PATTERSON'S ORCHESTRA

—BIG FLOOR SHOW—

GROFF AGENCY, YORK, PA.



## "Thanks for calling"

How often people use those words at the end of a telephone call!

Perhaps they mean "thanks for the good news." Or "thanks for this useful information." Or "thanks for the order."

Sometimes they mean "thanks for thinking of me. Thanks for cheering me up."

Whatever the meaning may be, people do appreciate your calls and you appreciate theirs.

"Thanks for calling" is a constant reminder of how much usefulness and value and friendship your telephone gives you. It's one of life's biggest bargains.

THE C & P TELEPHONE COMPANY OF MARYLAND



It was not until 1876 that the Navy adopted the English Morse telegraphic code.

### Business Services

PATRONIZE our Advertisers. These firms are reliable and have proven through the years that they handle only quality products and offer skilled professional service and advice to their patrons.



**CREAGER'S**  
Florist Shop  
PHONE THURMONT 4221

### STIEFF — TOWLE LUNT

Reed and Barton  
Silverware  
ELGIN WATCHES  
WEDGWOOD CHINA  
Fostoria Glassware  
Buxton Leather Goods  
**BLOCHER'S**  
"Jewelers Since 1887"  
25-27 Chambersburg St.  
GETTYSBURG, PA.

### DR. R. P. KLINGER, JR.

Optometrist  
19 East Main Street  
EMMITSBURG, MD.  
EYES EXAMINED  
GLASSES FITTED  
Complete Optical Repairs  
—HOURS—  
Monday and Friday  
10 A. M. to 9 P. M.  
PHONES:  
EMMITSBURG HI 7-5191  
WESTMINSTER TI 8-8340

—REASONABLE RATES—  
ON  
RADIO & TV SERVICE  
All Work Guaranteed

### EUGENE E. MYERS

222 W. Main St.  
Phone HI. 7-2202  
EMMITSBURG, MD.

### C. E. WILSON

Funeral Home  
EMMITSBURG, MD.

Phones:

Emmitsburg 7-4621  
Fairfield 6

### Fast and Dependable Prescription Service

Accuracy Comes First  
• Your Best Drug Store

**Peoples Drug Store**  
York Street, Gettysburg

### Dr. D. L. Beegle

CHIROPRACTOR  
EMMITSBURG - MARYLAND

### Re-registration Of Maryland Drivers' Licenses!

\*\*\*  
No appointment necessary. Papers completed and mailed while you wait.

\*\*\*  
**J. WARD KERRIGAN**

—NOTARY PUBLIC—  
Emmitsburg, Md.

## Looking Ahead

...by Dr. George S. Benson  
DIRECTOR—NATIONAL  
EDUCATION PROGRAM  
Searcy, Arkansas

### Congress And Harry Bridges

When Harry Bridges sat in a Congressional hearing room in Washington and threatened to aid the enemies of the United States in a war in which the interests of international Communism were involved, many Americans in and out of Congress were shocked. But shock wears off, and Bridges knows this well. Would anything be done about Harry Bridges? This was the question that bothered me. Would the apathy of our people permit the threat to go unchallenged? Would Congress forget it?

I wrote a personal letter to every member of the House of Representatives and the Senate. My letter called attention to the Bridges defiance. It asked: "What will you, as a Representative of the American people, do about this traitorous challenge and the power of the man who has so boldly made it?" So far 204 replies have been received. Almost without exception they have been personal, responsive, thoughtful letters. They have come from leaders of both parties in the Senate and House.

Two-fold Danger  
Actually two issues are contained in the Bridges threat (1) His presence in America at the head of one of the nation's most strategic unions in spite of the fact that he twice has been found to be a Communist; and (2) His apparently unassailable power merely as a union boss—power which, if joined with that of labor boss Jimmy Hoffa (as planned), can paralyze the nation's economy.

Many of the letters from Senators and Representatives dealt with both issues. All except a very few expressed shock and deep concern over the Bridges statements. A number of the Congressmen including Rep. Francis E. Walter (Pa.), chairman of the House Un-American Activities Committee, called attention to the Walter Bill, H. R. 6780, which would impose a stiff fine and imprisonment on a labor leader who would carry out such a threat as Bridges made—in times of "national emergency" or war. This is one protective step in the right direction, but I personally believe that it

would not halt Bridges' union if it wanted to sabotage our war effort. A number of his leadership associates are known Communists. A few jail sentences—with recourse to a "liberal" Supreme Court again—wouldn't bother them too much. Their Viewpoints

Here are the categories of the replies from Congress:

1. The Bridges statements to the House Un-American Activities Committee shocked us but we believe there are sufficient present laws to take care of such people and such threats. An excerpt from a well-known Senator: "I believe there is available to the Government a wide variety of weapons which could be used to deal with any situation which might arise in the exercise of power by such persons as Mr. Bridges." Approximately 30% of the letters took this view.

2. The Bridges Statements constitute a challenge to the Government of the United States and we intend to do everything in our power to protect our nation against Bridges' power. Excerpt: "I feel that Bridges' testimony will serve as a stimulant for Congressional action to correct some of these abusive powers which have been exerted by some of the nation's labor leaders like Bridges and Hoffa." These Congressmen (about 30% of the letters), mentioned the Walter Bill and some of the labor boss control legislation arising from the McClellan Committee hearings.

This Congress Stacked?

3. The Bridges statements are another indication that our present laws aid the rise to power of labor bosses and their continuation in autocratic power. We need new strong laws to prevent such great power centralization in the hands of one labor boss or a few. But the chances of such legislation being enacted by the present Congress are very slim indeed. Excerpt: "Efforts to enact legislation which would negate the autocratic power of such individuals as this and the organizations they control can obviously not be passed with the composition of Congress as it is. It remains to be seen whether the American public will demand of their representatives the necessary forthright action on threat of expulsion. Nothing short of this would suffice." About 40% expressed similar frustration.

Senator McClellan made a statement pertinent to both the Bridges and the Hoffa threat: "I would say again to my col-



Because more earnings can be counted toward social security beginning this year, higher benefits will be payable to many workers who will retire in future years, according to W. S. King, Manager of the Hagerstown social security office. Beginning with 1959, up to \$4800 of yearly earnings will be taxed and credited to a worker's social security account. Up until this year only the first \$4200 of yearly earnings was creditable and therefore taxable.

leagues and to my countrymen everywhere—don't minimize or underestimate the dangers to our free economy and internal security that are involved in this threat. Such dangers do exist; they are real; and something must be done about them." Something effective will be done only if and when you and millions of other citizens demand it.

This increase in the taxable earnings base recognizes the general rise in earnings levels since the old maximum of \$4200 was established in 1954, King said. Social security benefits for the worker and his family are figured from the average earnings credited to his social security account. This change in the law means that a higher proportion of yearly earnings will be counted in figuring the benefits payable to a worker and to his family when he retires, becomes disabled or dies.

Anyone wanting information on this or any other phase of the social security program is invited to call or write the Hagerstown social security office located at 59 North Cannon Avenue.

## OUR STATE UNIVERSITY

Housewives prefer a plastic egg carton over the regular and window type carton, according to a consumer response survey conducted recently in a retail store by the University of Maryland Experiment Station.

When housewives were asked

their preference of three cartons on display, namely, the regular, window type and plastic, nearly 70 per cent preferred the plastic carton; 21 per cent indicated a preference for regular; and seven per cent preferred the window type. Only three per cent had no preference.

In giving reasons for their choice of the plastic cartons, housewives said they liked to see the color, size and condition of the eggs they bought.

When the price of eggs displayed in the plastic carton was increased to three cents over the regular, housewives purchased eggs in the two cartons at about the same rate. This test was conducted for a four week period.

Even though tests at Maryland and other stations show that plastic cartons may increase sale of eggs, there are several problems which need to be overcome. Thus far, the cost of the plastic carton, is prohibitive for its use in trade channels. A further problem is the difficulty of packing eggs in plastic, especially when the job is done on an assembly line basis.

### Farm Income Down Slightly

Farmers' realized net income

during the first six months of 1959 was running at an annual rate of \$12 billion, United States Department of Agriculture reports. This is approximately \$1 billion less than a year ago and the same amount above 1957.

Cash receipts from farm marketing were holding up well, but government payments were down due to the end of the soil bank acreage reserve program, and production expenses were at a new high level.

However, prospects appear good for United States agricultural exports in 1959. Contributing factors include the revival of Europe's economy continued U. S. economic expansion, and the strengthened dollar position of most of the main commercial markets of the United States in Western Europe.



## OUR CREATIVE SCIENCE!



## USED CARS

1956 Olds, full power; very clean.  
1956 Buick 2-Dr. Hardtop; R&H; Automatic Transmissino.  
1954 Olds 4-Dr.; R&H; Auto. Trans.; P.S.  
1954 Ford 2-Dr. Sedan; R&H; O.D.  
1952 Chevrolet 4-Dr.; R&H.

## SANDERS BROS. GARAGE

—GUARANTEED USED CARS—

Phone HI. 7-3451

Emmitsburg, Maryland

## REAL ESTATE

All types of Real Estate Sales handled confidentially and efficiently. Farms a specialty. If you have property to sell or desire to buy, consult me immediately.

### WILFRED M. WATKINS

(Located on W. Main St. next to American Store)  
PHONE HI. 7-2127 EMMITSBURG, MD.  
Representing Charles H. Jamison, Realtor  
PHONE: DIAMOND 9-3262 POOLESVILLE, MD.

# SAVE MONEY

## WITH A FOOD FREEZER

One pork chop left? Couple of pieces of fried chicken? An extra cooked hamburger? Wrap and store these temporarily in the freezer.

# SAVE TIME

## WITH A FOOD FREEZER

Food and formula for a baby can be prepared and frozen two or three weeks in advance, and packaged in meal-sized portions.

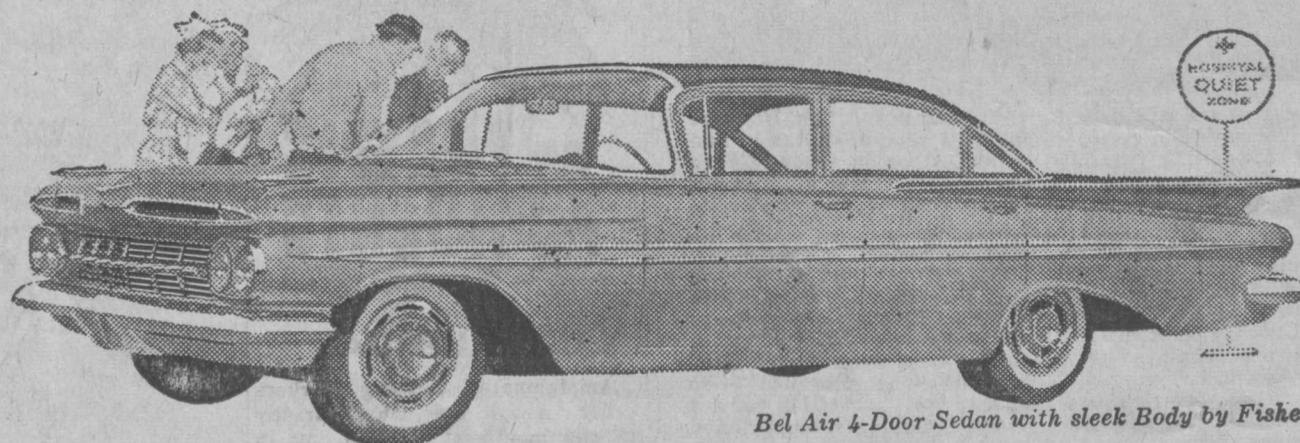
Coffee and iced tea which are left-over can be frozen in ice cube trays and will be ready for use in a minute's notice.

## FREE

Write today for your free home food freezer leaflet. Just call or write our home service department.

## POTOMAC EDISON CO.

THE FUTURE IS ALL-ELECTRIC



Bel Air 4-Door Sedan with sleek Body by Fisher

# smoothest ride!

One of the 7 big bests Chevrolet gives you over any other car in its field

Anyone who's ever taken a Chevy over a choppy country road can tell you how lightly Chevrolet's Full Coil suspension handles rough going—and coil springs never squeak, never need grease! Try this velvet way of going for yourself. Once you do, you'll find your own way of saying what MOTOR TREND magazine puts this way: "...the smoothest, most quiet, softest riding car in its price class." But the happiest part of it all is that this Full Coil ride is just one of seven big bests—all documented by published opinions of experts and on-the-record facts and figures.

**BEST ROOM**—Official dimensions reported to A.M.A.\* show that Chevrolet sedans offer more front seat head room than all but one of the high-priced cars—more front seat hip room (by up to 5.9 inches) than the "other two" of

the leading low-priced three.

**BEST ENGINE**—Chevrolet engines have long won expert praise from virtually every automobile magazine, and, just recently, Chevrolet received the NASCAR† Outstanding Achievement award for "the creation and continuing development of America's most efficient V-type engines."

**BEST ECONOMY**—A pair of Chevrolet sixes with Powerglide won their class in this year's Mobilgas Economy Run, topping every other full-sized car. And the winning mileage was a whopping 22.38 m.p.g.

**BEST BRAKES**—Chevy's bonded-lining brakes are the biggest in their field, built for up to 66% longer life. In a direct competition conducted by NASCAR, Chevy out-stopped both of the other leading

low-priced cars in a test of repeated stops from highway speeds.

**BEST STYLE**—It's the only car of the leading low-priced 3 that's unmistakably modern in every line. "In its price class," says POPULAR SCIENCE magazine, "a new high in daring styling."

**BEST TRADE-IN**—A new N.A.D.A.‡ Guide Book can give you the figures on Chevy's extra value. You'll find that Chevrolet used car prices last year averaged up to \$128 higher than comparable models of the "other two." Your Chevrolet dealer will be happy to tell you about a whole host of other advantages besides these seven. Why not drop by his showroom?

\*Automobile Manufacturers Association.

†National Association for Stock Car Advancement and Research.

‡National Automobile Dealers Association.



Visit your local authorized Chevrolet dealer and see how much more Chevy has to offer!

**REDDING CHEVROLET INC.**  
THURMONT  
MARYLAND



## YOUR PERSONAL HEALTH

### Snakes In The Grass

If you are a lover of the great outdoors and don't want snakebite to spoil your fun, choose your camp site in Maine or Alaska. Those are the only two states in the Union where there are no poisonous snakes. Most of the 35

poisonous species known in the U. S. are pit vipers, which include rattlers, copperheads, and water moccasins.

About 3,000 people are bitten by snakes each year. Fortunately deaths are few, no more than 10 or 20 a year. However, outdoor activities like camping, hiking and picnicking are getting more popular. High boots or leg-

gings and a stick to explore underbrush before moving into it are wise.

Usually bites occur out in the wilds with no doctor nearby, so the victim himself or a companion should be able to apply first aid. The important thing is to keep calm, keep the victim quiet (to avoid pumping the poison rapidly through the blood stream). Then:

(1) Apply a tight bandage to restrict the spread of the poison. This is not a tourniquet and shouldn't be too tight. The poison is just under the skin.

(2) Make an X-shaped cut over each fang mark and use suction to remove the venom. A suction cup should be part of an outdoor first aid kit, or the poison can be sucked into the mouth and spit out. Keep up for a half hour or hour.

If the swelling advances beyond the bite, cuts should be made at the edge of the swelling and more suction applied. Move the bandage too.

Snakebite is always a medical emergency. As soon as the victim reaches a hospital antivenin will be given, if the bite is serious. A bite on an arm or leg is less dangerous than one near a vital organ, like the heart. It is more serious for the very young or the very old, but luckily they are less likely to be within reach of poisonous snakes.

The effects of snakebite may include vomiting, shock, muscular twitching, blood coagulation difficulties and internal hemorrhage. If he gets safely through the first 48 hours, the patient is usually out of danger.

### OVER THE GARDEN WALLS

A COLUMN FOR HOMEOWNERS



If you've got a good lawn, you're lucky. Keep it that way!

(Of course you know it wasn't just plain luck—it was hard work, and doing the right thing at the right time.)

But if you're like a lot of us, your lawn might be getting bald spots. Or maybe you've got patches of the wrong kind of grass growing here and there. If either is the case, you'll want to try some spot reseeding in early September.

The number one cause of poor lawns is using poor seed of the wrong species. So whether you're reseeding or planting new lawn, good seed is important.

#### What Is Good Seed?

If you've ever tried to buy lawn seed, you know there are all sorts of mixtures and species. Enough to make your head spin. "Which to buy?" seems like a riddle. First off, let's distinguish between poor seed and the wrong species.

Poor seed is seed that has poor germination, or lots of inert matter or lots of weed seed.

The wrong species is the species not suited to your soil, lawn conditions and use. There are lots of species. But each will give you a different kind of lawn.

You can find out which species you're buying and how good the seed quality is by checking the seed tag. If you're buying seed from large bags, ask to see the seed tag before you buy. If your seed is prepackaged in boxes or bags of one pound or larger, look on the package before buying. Be sure you know what you're buying.

#### What Species To Buy?

The first question most people ask is, "Shall I plant a mixture, or just one species?"

If your lawn conditions are uniform, a single species might be best. But since most lawns have different soil, shade and use conditions, a mixture is usually safer. Grasses vary in their tolerance to sun and shade, to differing soil acidity and drainage, as well as traffic. You're usually better off to buy the species you want and make your own mixture.

The most popular species of lawn grasses is Kentucky bluegrass. It's good for full sunlight and partially shaded areas. It grows well in spring and fall, but tends to become dormant in mid-summer. A new strain of bluegrass is Merion. Although it needs more care and fertilizer, it is a better lawn grass than common Kentucky bluegrass.

Red fescue, creeping red fescue, Pennlawn, Mahee, and Cheving's fescue are good for shady or droughty areas. They don't need much water. They'll be hurt if cut shorter than 1½ inches.

Poa Trivialis is best suited for naturally moist and shaded areas.

Some folks like a little white clover in their lawn. But it should never be more than five per cent of the mixture.

One to two pounds of seed for each 1000 square feet to be planted is enough, provided you've got a well-prepared seedbed.

Take It Easy With These  
A lot of lawn seed sold as mix-



THE WORLD'S MOST WIDELY USED DEVOTIONAL GUIDE

Read Psalm 41.

Blessed are the merciful: for they shall obtain mercy. (Matthew 5:7.)

The word beatitude means "blessing". It has a higher content of meaning than either happiness or well-being. Thomas Carlyle once said, "If you find blessedness, you can dispense with happiness."

In regard to this beatitude of mercy, we are to take divine mercy as our pattern. God's mercy is no more sentiment. His mercy is based on His fatherhood. In mercy, God has compassion on man's lowly, sinful state. In mercy, He sent Christ into the world. The whole story of God's mercy is so beautifully expressed in John 3:16: "For God so loved the world, that he gave his only begotten Son, that whosoever believeth in him should not perish, but have everlasting life."

This mercy of God to us we must reflect to our fellow men. Mercy is the quality that prompts us to affection for persons and service to them. It brings also in its train healing for ourselves. "Blessed art the merciful: for they shall obtain mercy." Through mercy given to others, we ourselves receive from God. Prayer

tures contain ryegrass.

Annual ryegrass gives quick cover while permanent grasses are becoming established. But, if it's more than five per cent of the mixture, it might smother out the more desirable grasses.

Perennial ryegrass doesn't usually last more than a year or two in this area.

Both ryegrasses tend to grow in clumps, and since they'll die out, you'll have to reseed unless you put only a trace of them in your seeding mixture.

Orchardgrass, tall fescue (Ky 31 and alta fescue) and timothy are good for hay, but make poor lawns.

Next week, we'll talk about how to seed lawns.

In the meantime, why not ask your county agent for a copy of the University of Maryland Extension Service Bulletin 171, "Lawn Care"?

bushel, William L. Dudley, chairman, Maryland Agricultural Stabilization and Conservation Committee, announced this week. Average county rates are based on the national average support price of \$1.12 per bushel, announced last February, with adjustments for location and historical price patterns.

Under the 1959 corn support program, the price-support rate to each producer throughout the country reflects the national support level. As approved by 71.2 per cent of the growers voting in corn acreage allotments and the commercial corn-producing area of earlier programs are not in effect for the 1959 program.

As in the past, corn price support in 1959 will be carried out through farm- and warehouse-stored loans and purchase agreements. To be eligible for support, corn must have been produced in 1959 must grade No. 3 or better or No. 4 because of test weight only, must meet certain moisture requirements, and must be in adequate storage.

Football Coach: "And remember that football develops individuality, initiative, and leadership. Now get in there and do exactly as I tell you."

### Corn Support

#### Prices Announced

Prices for the 1959 crop of corn will be supported in Maryland at an average of \$1.23 per

## HARDWARE

Every home owner and farmer needs tools and Hardware around their property these days. Drop in today and see our

### COMPLETE LINE OF TOOLS

- Power Saws
- Hand Saws
- Vises
- Hammers
- Lawn Mowers
- Water Pipe
- Garden Tools
- Pipe Connections
- Paints
- Tool Kits
- Locks, Hinges

## Zurgable Bros.

FARM SUPPLIES

PHONE HL. 7-5051 — EMMITSBURG, MD.

## for the Perfect Wedding..

your invitations and announcements must be flawlessly correct!

Let us show you the

"Flower Wedding Line"...

(created by Regency!)

NATURALLY, they're important to you! That's why we want you to see these invitations for yourself. And please don't let that costly look mislead you... the magic is in the making of these invitations! Feel that fine, sharp raised lettering. It's done by a very special process! Feel the creamy quality of the papers! Check the perfect form of these invitations with people who really know! Come in! We will be happy to show you the "Flower Wedding Line."

We have matching enclosure cards, response cards, and informals!

Priced as low as 50 for \$7.00  
100 for \$10.50 with double envelopes and tissues  
Select from 45 distinctive papers and 17 styles of lettering.

CHRONICLE PRESS

Phone HL. 7-5511

Emmitsburg, Md.

Sparky says:



Don't give fire a place to start!

### THE CHRISTIAN SCIENCE MONITOR

AN INTERNATIONAL DAILY NEWSPAPER

Good Reading for the Whole Family

- News
- Facts
- Family Features

The Christian Science Monitor  
One Norway St., Boston 15, Mass.

Send your newspaper for the time checked. Enclosed find my check or money order. 1 year \$18 □  
6 months \$9 □ 3 months \$4.50 □

Name

Address

City Zone State

FD-36

## Yesteryear's one source of water for everything

Water for drinking, cooking, washing, bathing, all came from the same covered well in days of old. The one-for-all principle is exemplified in the modern scene by our "one-stop" banking facilities. It's convenient to do ALL your banking business here!

## The Farmers State Bank

EMMITSBURG

MARYLAND

MEMBER OF THE FEDERAL DEPOSIT INSURANCE CORPORATION

3% INTEREST ON SAVINGS ACCOUNTS



## SPORTS AFIELD

By Ted Kestner

In the realm of sporting dogs, the prefix "Champion" which the owner proudly places before the registered name of his dog has an important significance, says Henry P. Davis, Sporting Dogs Editor of Sports Afield Magazine. To the gun dog man, the title takes on additional meaning when it is made clear that it was won in the red-hot crucible of field trial competition.

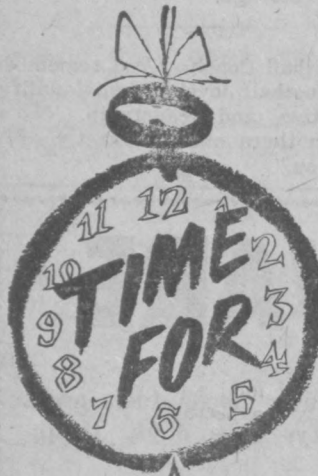
Such a title is proof that the dog possesses extraordinary abilities in the hunting field, and indicates that he might make a successful mate for the prospective breeder's good female. This does not mean that all champions make excellent sires or that nonchampions do not reproduce effectively.

Many dogs, in all sporting breeds, that have not been successful in annexing a field trial crown, or even have not been campaigned in field trial competition, prove to be exceptional sires, and many field trial champions have been produced by non-winning parents.

The title does, however, indicate that the dog has, on occasion at least risen to the heights of brilliance in the field against well-seasoned competition. And such a dog might well merit, for several reasons, more consideration as a prospective stud than a comparative unknown. Yet bird dog history has known a number of dogs that have gone on to immortal fame as sires after failing to win important field trial titles. In fact the controversial decisions that cost them the titles brought them into sharp focus before the breeding public and gained for them many breeding opportunities.

Such a dog was the famous pointer Fishel's Frank, the lone representative of his breed to compete in the National Bird Dog Championship of 1908. Frank made an error on his first covey find and then came on to perform with shining brilliance during the rest of the long three-hour heat, finishing with strength to spare. The large gallery following the stake was fairly buzzing with speculation. So high was the interest that a vote was taken among the spectators. This resulted in a tie between Fishel's Frank and the setter Danfield.

Count Whitestone II, a dog that had turned in a goodly bird score but whose race was spiced with numerous false points, was not considered "in it." Yet the judges called back the two setters Danfield and Count Whitestone II for a second series, and it was in this heat that Count Whitestone II won the title. So much publicity was given to the performance of Fishel's Frank that pointer breeders flocked to his court and he established a veritable family. Two of his sons avenged his defeat by winning the National Championship. These were Comanche Frank and John Proctor, whose names are familiar to all pointer fanciers. Both sired many winners, and a large percentage of today's pointers can trace their pedigrees back to Fishel's Frank.



GAS SERVICE PEOPLE PREFER



**YOU PAY AS YOU USE.** You make no outlay of cash in advance for your supply of gas — you pay only for the gas you use, after you've used it just like city gas users. Your meter is read monthly and you are billed in small, easy-to-pay amounts.

**MATTHEWS  
GAS CO.**

Emmitsburg  
and Thurmont



## PUBLIC SALE

Discontinuing farming and moving to town and with my farm being for sale, I, the undersigned, will sell at Public Sale, three miles north of Rocky Ridge, Md., 1 mile south of Motters, Md., along Route 76 in Frederick County, on

**SATURDAY, AUGUST 29, 1959**

at 10:30 A. M. Sharp (BST)

### FARM MACHINERY AND TOOLS

Farmall Cub Tractor fully equipped; Plow, Cultivators, 5-ft. Mower and Snow Blade, used only 2 years; A.C.-W.C. Tractor, new tires, new paint and just overhauled; Woods Rotary Mower, 80-inches wide, same as new; Two-wheel Trailer; Corn Planter; Corn Sheller with motor; Air Compressor; Mannings 7-inch Power Saw with carrying case; 3/4-inch Drill; Emory Grinder, 3/4 h.p. Electric Motor; 1/3 h.p. Electric Motor, new; wood Wheelbarrow; Lawn Mower; Lawn Roller; Electric Hedge Trimmers; Pump Jack; Wire Stretchers; wrenches of all kinds; Tool Boxes; Lot of Hinges; new 82-gal. Electric Rheem hot water heater; new Demings' deep-well Jet Pump with 42-gal tank; 40-ft. Extension Ladder; new Barbed Wire; lot of Wood Posts; 12-ft. Wood Gates; Lumber; lot of stove wood; ice chest; bath tub; brooder stove; blockfalls; log chains; axes; forks; barrels and drums; set of Stillards; electric fence, wire, posts and insulators. Lot of paint, new die set, grease guns; shovels; 50 bales of hay; some loose hay; milk cans, strainer, buckets, furnace kettle, kettle and ring, set of butchering poles, stirrer, grinder and stuffer combination with motor, and 6-quart lard press.

1957 Ford 1/2-Ton Custom Cab Pick-up Truck, fully equipped with racks and in perfect condition—low mileage.

### HOUSEHOLD GOODS—REAL ESTATE

10-ft. solid Oak Extension Table, solid bottom Kitchen Chairs, other Chairs, leather rocker, Morris Chair, Kitchen Cabinet, Antique Sink, Antique Cupboard, Oak Extension Table, old-time Lounge, 2 Washstands, 2 Iron Beds with springs, Hallrack with mirror, old chest of Drawers, 3 Wardrobes, drop-leaf Table, small Cupboard, large Oak Desk, large Piano Bench, solid oak Settee, Glider, Porch Swing, 3 metal Lawn Chairs, large Heatrola, Siegler Oil Heater, 5-6 room size; two 275-gal. Oil Tanks, Chunk Stoves, Gas Heater, several small Tables and Stands; lot of Flower Stands; 5 old-time Irons, antique Iron Cook Pot, 3 Wash Tubs, Egg Basket, Wash Boiler with rack, Wash Bowl and Pitcher; new Picture Developing Equipment; old-time Clocks; lot of Dishes (some antiques), Dish Pans and Kettles; Mixing Bowls, Lard Cans and Buckets, lot of jarred Fruit and Vegetables, empty jars and jugs, Kerosene Lamps, Electric Lamps; Butter Churn and Mold, old Pistol, Shotgun; 11-ft. GE Deep Freeze; 6-burner Caloric Gas Range and many other articles not mentioned.

I will offer my Real Estate if not sold before sale day by private sale, consisting of 38-acre farm improved with 12-room house, 2 baths and in perfect condition. Small barn and other buildings in good repair.

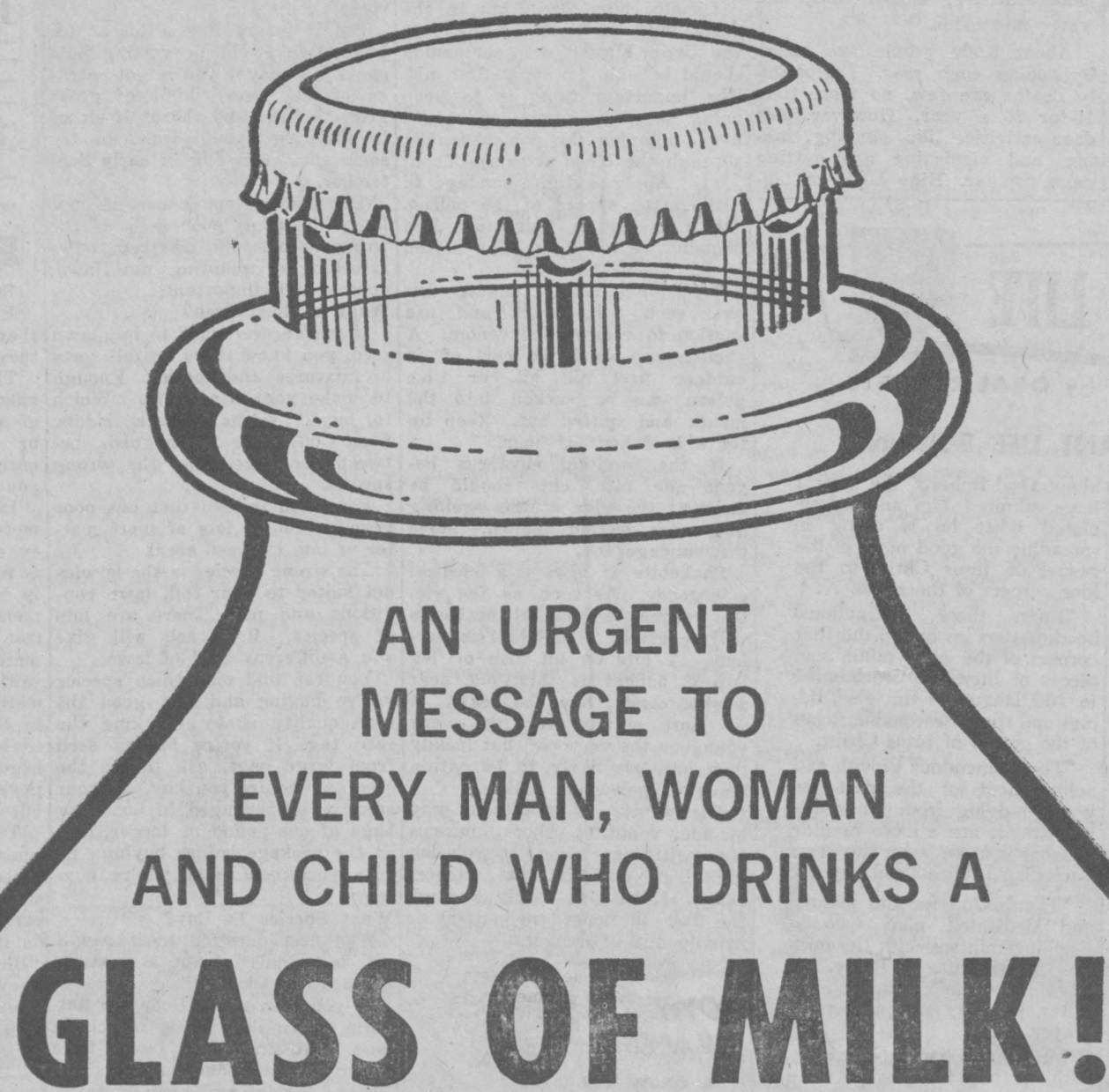
TERMS—Cash on Personal Property. I will announce terms on Real Estate on Sale Day, if not sold before.

**MRS. CHARITY E. KAAS**

Rocky Ridge, Md.

Harry Trout, Auct.  
Robert R. Sayler, Clerk

Lunch Rights Reserved—Not Responsible For Any Accidents



**CIVIC ORGANIZATIONS—HOMEMAKERS  
CLUBS AND COMMUNITY GROUPS  
ATTENTION!**

**IF YOU'RE A MILK USER—YOUR MILK  
BILL STANDS A GOOD CHANCE OF  
GOING SKY-HIGH BECAUSE OF A  
PROJECTED FEDERAL REGULATION!**

**PLEASE READ CAREFULLY!**

Certain pressure groups and giant milk interests have combined to try to bring Federal Milk Regulations to Baltimore City and many Maryland counties. Not health or sanitary regulations, mind you—but PRICE regulations.

If these regulations go in—your milk bill is going to jump! This is no wild guess—it's part of a national pattern and has happened in many other communities. Besides that—independent dairy farmers will receive less for their milk—and many of them will be forced out of business. This, too, is part of a national pattern. Below are three examples of the sort of things which occurred when this Federal regulation went into effect elsewhere.

**1**

In Washington, D.C., the price of milk went up the same day the Federal Regulation went into effect—July 1, 1959.

**2**

In Bernardsville, New Jersey, the price of milk went from 26c to 30 3/4c per quart in less than 3 years.

**3**

In New York city, believe it or not, the number of active dairies dropped from over 40—to 5.

Here's what you can do: Instead of just thinking about it—act! Let your feelings be known! Our Maryland Senators can nail this thing—stop it right in its tracks—if they know YOU don't want it! So—TODAY—NOW—clip the blank, fill it out and mail to either Senator J. Glenn Beall or John M. Butler, Senate Office Building, Washington, D. C. They're waiting to hear from you!

Dear Senator:

WE DON'T WANT THIS FEDERAL MILK PRICE CONTROL IN MARYLAND. PLEASE USE EVERY EFFORT TO HAVE IT STOPPED.

THANK YOU

NAME

ADDRESS

CITY OR TOWN

**CLIP, FILL  
OUT AND MAIL  
TODAY—TIME'S  
GETTING SHORT!**

CONSUMER'S PROTECTIVE LEAGUE OF MARYLAND



## THIS 'N THAT

By George W. Wireman

## The Skyline Caverns

Located about one mile south of the northern entrance of the Skyline Drive at Front Royal, Virginia, the Skyline Caverns takes its place as one of the most interesting and best illuminated caverns in the eastern United

States. These caverns, the latest developed and most outstanding natural wonder in the East, are host to multiple thousands of visitors annually.

It is in these caverns, that the only known anthodite formations in the world are found. It is here, far beneath the surface of the earth, the world's largest variety of rock formations may be found. It is here in the caverns that the visitor sees first hand, the many wonders of mother nature.

If all that has been explored at the Skyline Caverns were developed, it would rival the world's largest caverns.

Wide canyons, large, vaulted ceilings and dry walkways with a perfect electrical illuminating system, the world's best in fact permit unobstructed views of the glistening stalagmites and stalactites, mysterious streams, a thirty-seven-foot waterfall, great travertine draperies, fluted columns, and snow-white flowstone.

Just what is a cavern or cave, and how are they formed? A cave or cavern is a natural hollow under the surface of the earth or in a mountain or hill, usually in rock formations, with an opening to the surface. Caverns are formed in various ways in various types of rock, but they are commonly associated with underground drainage of limestone formations in humid areas. Water containing carbon dioxide, which is obtained from the air and the soil, seeps into the rock and along pores and joints. The soluble limestone is dissolved by the water and the pores and fissures are enlarged to form caves. Some caves formed in this manner are unusually large and contain miles of passages and gallery-like rooms. Frequently, mineral-charged water seeps into the cave or cavern and is evaporated leaving limestone growths called stalactites (hanging from the roof) and stalagmites (growing up from the floor). Some of these formations are highly spectacular in the Skyline Caverns.

"The Shrine," "Capital Dome" and "Fairyland Lake" are but a few of the many beautiful formations found in the Skyline Caverns. These and other formations can be found in Luray Caverns, Crystal Cave in Pennsylvania, Mammoth Cave in Kentucky, and Carlsbad Caverns in New Mexico. The Karst region of Yugoslavia and the Causses in southern France are also rich in caves.

Caves also occur in volcanic formations caused by the rapid cooling of the surface of the flow, while the molten lava underneath flows away. Also, gas chambers or pockets form in the lava, leaving caves, as does ice

melting underneath the lava. Sometimes earthquakes cause caves. Another common form of cave is the sea cave, which is formed by the action of waves on the base of a cliff or headland. Sometimes river currents form caves in cliffs in a somewhat similar fashion. Some caves, usually in arid regions, may be formed by wind carrying fine particles of sand against a weak rock surface. Caves have been a source of legend and wonder to mankind and have served as homes for man and animals.

In the Skyline Caverns are seen the world's only known collection of Anthodites, flower-like calcite formations. These are truly "the orchids of the Mineral Kingdom."

Those who seek the infinite beauty of the earth's supreme splendor, hidden for millions of years may find it in Virginia's famous Skyline Caverns, which are open to the public daily throughout the year. No matter when you may consider visiting the marvels of nature at Skyline Caverns, the visitor will always find the temperature remains at 54° the year round.

What makes these caverns so popular with the visitor is the friendly and courteous and efficient service rendered by the guides who have been schooled in Caverns Geology and are always pleased to answer questions pertaining to the forces of nature that have formed and decorated this subterranean masterpiece.

What is the most exciting thing about these caverns is the fact that the end of the passages has not yet been discovered. One of the many unique features of the caverns is the geometric plan of the tour which avoids retracing and repetition. A new section of anthodites (cave flowers) was opened to visitors in 1958. More sections will be opened at future dates, but this takes time, for in the opening of a new section, tons and tons of clay and earth must be removed, all by

hand and this indeed takes time, and money. With this thought in mind, the wonders of Skyline Caverns never cease. Each time the visitor enters this subterranean masterpiece, he learns a little bit more about mother nature and this wonderful land which God has given to us. The more we study about these magnificent beauties of the underground, the more one realizes how wonderful God is and there is no question that he is the Master of all.

The Skyline Caverns were discovered by scientific deduction December 17, 1837 by the late Walter S. Amos, Caverns Geologist of Winchester, Virginia. After he explored the caverns he never missed an opportunity to take visitors into his find and share its beauties with them. On April 13, 1946 they were official-

ly opened for exhibition by the Governor of Virginia, and each year since, have been drawing multiple thousands of visitors.

To reach the caverns from this section of the country, one need only to take Route 340 from Frederick, Maryland or Route 11 from Hagerstown to Winchester, Va., and then Route 522 into Front Royal. The average mileage regardless of which route you take is only 80 miles, one way.

A trip to Front Royal, the Skyline Caverns and the Skyline Drive is indeed a beautiful trip this time of year, and with the turning of the leaves in the fall, the visitor is introduced to still greater beauty.

It is nature at her best. And it is with great pride, that the writer of this column, recommends such a trip for you and

your family.

A spacious entrance lodge is for your pleasure: rustic in design and modernly equipped in every respect, with lounging rooms, tile rest rooms, writing desks, coffee shop, gift and souvenir shop. It is naturally air conditioned throughout from the caverns. Then too, there are the lovely picnic grounds which have ample facilities, including outdoor cooking, for families, reunions and all-day church outings.

This year something new has been added for the enjoyment of the visitor aged 6 or 60. A miniature train operating through the wooded section of the Caverns' grounds, provides a thrilling, scenic trip for the visitor. It is a trip well worth one's time and once you have seen the caverns you will want to return again and again, to marvel at the wonderful works of nature, as found in the Skyline Caverns.

On Aug. 15, 1944, the U. S. Eighth Fleet, under Vice Admiral H. K. Hewitt, landed troops in three areas east of Toulon in Southern France, bringing to a close that phase of WWII that had begun in North Africa.

HARDMAN'S  
WALLPAPER  
STORE

Waynesboro Road  
EMMITSBURG, MD.  
Open 4 to 9 P. M. Daily  
—All Day Saturday—  
Phone HI. 7-4154

**ADMINISTRATOR'S NOTICE**  
This is to give notice that the subscriber has obtained from the Orphans' Court of Frederick County, in Maryland, letters of Administration on the estate of EDITH CATHERINE KEILHOLTZ

late of Frederick County, Maryland, Deceased. All persons having claims against the deceased are warned to exhibit the same, with the vouchers thereof, legally authenticated, to the subscriber, on or before the 17th day of February, 1960 next; they may otherwise by law be excluded from all benefit of said estate. Those indebted to the deceased are desired to make immediate payment.

Given under my hand this 5th day of August, 1959.  
Raymond E. Keilholtz  
Administrator  
Goodloe E. Byron, Attorney  
True Copy—Test:  
THOMAS M. EICHELBERGER  
Register of Wills for Frederick County, Md.

8/7/59

Father Burke III

Rev. James G. Burke, professor of Greek at Mount St. Mary's College, Emmitsburg, was admitted to Providence Hospital, Washington, last Thursday. Convalescing from an operation last winter, Rev. Fr. Burke entered the hospital for further tests and observation.

NO. 19212 EQUITY  
IN THE CIRCUIT COURT FOR  
FREDERICK COUNTY, IN  
EQUITY

GLADYS C. MURPHY  
Vs.  
CARL ALFRED MURPHY

The object of this Bill is to procure a divorce A VINCULO MATRIMONII by the Plaintiff, Gladys C. Murphy, from the Defendant, Carl Alfred Murphy.

The Bill states in substance that the parties were married on November 24, 1950, in Frederick County, Maryland by Reverend Albert H. Dunning, a regularly ordained Minister of the Gospel; that the Plaintiff is a resident of Frederick County, Maryland, having resided therein for more than one year last past; that the Defendant is a non-resident of the State of Maryland, residing in the State of New Jersey for more than one year last past, his post office address being Marlboro State Hospital, Box 1, Marlboro, New Jersey; that during the month of June, 1953, the Defendant deserted and abandoned the Plaintiff and declared his intentions to live with her no longer; that said desertion was deliberate and final and there is no reasonable expectation of a reconciliation between the parties; and that no children were born as a result of said marriage. The Bill prays that the Defendant be divorced A VINCULO MATRIMONII and for general relief.

It is thereupon this 12th day of August, 1959, by the Circuit Court for Frederick County sitting as a Court of Equity, ORDERED that the Plaintiff give notice to the said non-resident Defendant of the objects and substance of this Bill by causing a copy of the same to be published in some newspaper published in Frederick County, once a week for four successive weeks prior to the 19th day of September, 1959, commanding him to be and appear in this Court in person or by Solicitor, on or before the 20th day of October, 1959, and show cause, if any he has, why a Decree should not be passed as prayed.

True Copy Test:  
ELLIS C. WACHTER,  
Clerk of the Circuit Court for Frederick County.  
EDWARD D. STORM,  
Solicitor for Complainant  
Filed August 12, 1959

8/21/46

## WANTED

I have buyers for the following type properties: 1—Small house with few acres and drinking water in or near the mountains for summer use, for \$2500. Can need some repair. 2—a house and lot or acre or two in Rocky Ridge vicinity. If you have anything like this for sale let us know at once. No obligation.

R. L. ZENTZ  
BROKER

TANETOWN, MD.  
Phone PL. 6-5301

Celestia Ann's  
ADVANCE Printed Pattern!

9111  
PRINTED IN  
ENGLISH  
FRENCH  
SPANISH

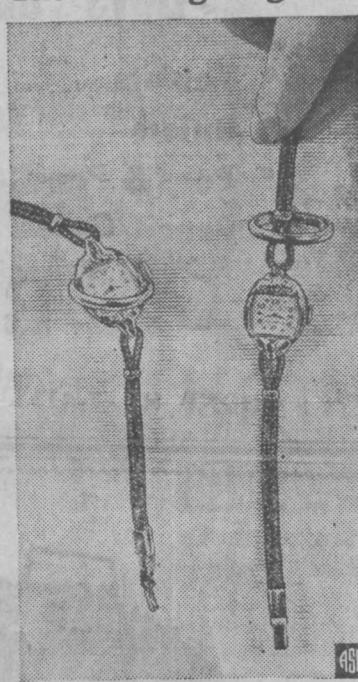
SIZES 10-12-14 AND 16

TEEN SEPARATES

SHIRTWAIST SEPARATES ARE SUPERB BASIS OF VERSATILE WARDROBE. TAKE A SHIRT BLOUSE, A SORTLY-PLEATED FULL SKIRT, A WIDE, WIDE BELT. MAKE ALL OF ONE FABRIC AS WELL AS OF COMPATIBLE CONTRASTS. MATCH, MIX AND LOVE!

Send 50c in coins, check or money order for this pattern. Send to Celestia Ann, care of Emmitsburg Chronicle, ADVANCE PATTERN CO., INC., Box 18, Murray Hill Station, N. Y. 16, N. Y. Be sure and indicate your Name, Address, Town, Zone, Pattern Number and Size.

## The Wedding Ring Test



ELGIN, ILL.—A ladies wrist watch so tiny it can be slipped through a wedding ring has been announced by Elgin National Watch Company. The petite little watch is completely American made and shockproof with 17 jewels. Called the Elgin Starlite, it replaces a line of foreign watches Elgin formerly marketed. The American watchmakers who created the watch claim a first in being able to produce a 17-jewel timepiece as tiny as this in the low-priced field. The wedding ring test pictured above has become an almost traditional test of petite styling in the watch industry. Very few ladies watches, foreign or American, can be slipped through an ordinary gold wedding band. Petite styling is considered important by American women, who apparently prefer functional jewelry to be as unobtrusive as possible. In addition to its demure size the Elgin Starlite is shock-resistant and can be purchased in either yellow gold or white styles.

Buchanan Valley  
PICNIC

Benefit Of

THE OLD JESUIT MISSION  
IN ADAMS COUNTY, PA.

(Midway between Gettysburg and Chambersburg, Pa.)

SAT., AUG. 22, 1959

from Noon Until Midnight!

Chicken or Ham Dinners—Games and Refreshments

ENTERTAINMENT FOR YOUNG AND OLD  
MOUNTAIN MUSIC AND DANCING

COME & DINE IN OUR LOVELY DINING PAVILLION

See and Hear Paul "Mac" McKendrick play six different instruments at one time!

ANNOUNCING THE  
**Grand Opening**  
OF THE NEW  
**Emmit Sewing Center**

402 West Main Street — Phone HI. 7-2273  
FRIDAY, AUGUST 28 — 6:00 P. M.

Free Gifts and Refreshments

GEORGE H. McDONNELL, Prop.

—CALL NOW FOR SERVICE—

## Dickies continentals

INSPIRED BY

PAT BOONE

ADVERTISED IN  
LIFE



SARTORIAL STANDOUT IN SLACKS

Quality and style for campus and vacation wear. See our selection of fabrics and colors now . . . and wait 'til you see the low price!

Dickies



CONTINENTALS—\$4.98

FLAP-POCKETS—\$4.98

Save Kemp's Discount Stamps—Save \$3 a Book

PAT BOONE  
SWEATERS

\$9.98

Matching Knit Shirt \$6.98

Also Matching Sleeveless Sweater  
\$7.98

Men, for the smartest in sweaters see the new line of SWEATERS by Revere. See the complete line of PAT BOONE styles which is the newest in Sweaters. 100% orlon—completely washable. Sizes S-M-L.

Other Sweaters from \$7.98 to \$14.98

Kemp's

"On The Square"

FREDERICK,  
MARYLAND



PAT BOONE  
Sportswear by Revere



**Police Training School At University**

A special training program for Maryland law enforcement officers will be held beginning September 8, at the University of Maryland. Sponsored by University College, in connection with the Maryland

**PUBLIC SALE**

SATURDAY, SEPT. 19, 1959

Farming Machinery and Household Goods. Located two miles southeast of Emmitsburg on Keysville Road.

OMA E. WOODS

EARL R. BOWERS, Auctioneer

**THIRD ANNUAL CARNIVAL**

SPONSORED BY THE

## Indian Lookout Conservation Club of Emmitsburg, Md.

### SEPT. 7-12 INCLUSIVE

COMMUNITY FIELD, EMMITSBURG, MD.

KIDDIES' NIGHT, TUESDAY, SEPT. 8

TELEVISION ENTERTAINMENT

RIDES — GAMES — FOOD — BINGO  
Pit Beef Barbecue by Walter A. Simpson

## Back To School Check List

**BOYS'**Pants & Slacks  
(Washable)**SHIRTS**Short Sleeves and  
Long Sleeves**BOYS' SOCKS**

Underwear

**BOYS' TIES**

and BOW TIES

**RAINCOATS****SPORT COATS****SUITS****JACKETS****GIRLS'**

School Dresses

**SKIRTS****BLOUSES****SLIPS****PANTIES****RAINCOATS****GIRLS' SOCKS**

Buster Brown

Da-Mil

**SWEATERS****SCARFS****HANKIES****GYM SHOES**COMPLETE LINE OF SHOES FOR  
BOYS AND GIRLS**SCHOOL SUPPLIES**

- Pencils
- Pens
- Note Paper
- Book Bags
- Spiral Notebooks
- Composition Books
- Tablets
- Binders
- Crayons
- Scrap Books
- Pencil Cases
- Dividers
- Erasers
- Compasses
- Rulers, Etc.

**HOUCK'S**

Center Square

EMMITSBURG, MD.

Law Enforcement Officers, Inc., the Municipal League, various local police departments, the Maryland School of Medicine, and the departments of sociology and psychology, the tenth annual Law Enforcement Institute is organized to present the latest developments in the solution of technical, legal medical, psychological, and sociological problems of law enforcement.

Meeting once a month for ten months, the police officers will be instructed by law enforcement specialists from throughout the country.

Lectures and discussions on such topics as determining the causes of traffic accidents, techniques in dealing with juveniles, functions of the K-9 Corps, criminal interrogation procedures, and sex offenders and their control will be offered.

A similar program, beginning September 9, will be offered by the university in Baltimore at the Enoch Pratt Library.

Registration and information concerning the institutes in Baltimore or College Park may be obtained by writing to the Director of Institutes, University College, University of Maryland, College Park, Md.

**Shower Given**

A surprise wedding shower was given Mr. and Mrs. William Hawk Saturday at the Taneytown Memorial Park by Nancy Bollinger and Eileen Stine. Guests present were: Mr. and Mrs. Earl Hawk and family, Mr. and Mrs. Kenny Hawk and family, Mr. and Mrs. Percy Bollinger, Mr. and Mrs. Leo Seiss and family, Mr. and Mrs. Keller Misner, the Misses Etta, Nina and Terry Bell, Mr. and Mrs. Albert Bell and family, Mr. and Mrs. Wilbur Thomas, Mrs. Robert Rock and daughter, Mr. and Mrs. Glenn Reaver and family and Mr. and Mrs. Clifford Green and family all of Taneytown; Anna Stine, Chambersburg; Mr. and Mrs. Warren Grove, Highfield; Mr. and Mrs. Elmer Bollinger, Thurmont; Mr. and Mrs. Harold Bollinger, Rocky Ridge; Mrs. Glenn Toms and son, Mr. and Mrs. Richard Toms and daughter, Mrs. Allen Bollinger, Mr. and Mrs. Henry Bollinger, Mr. and Mrs. Charles Bollinger, Mr. and Mrs. Francis Topper, Mr. and Mrs. John McGlaughlin, Mr. and Mrs. Norman Sheeley and Mr. and Mrs. Roy Sanders and son, Dave, all of Emmitsburg.

The submarine Archerfish sank the largest man-of-war ever downed by a submarine when she sank the 59,000-ton Japanese aircraft carrier Shinano on Nov. 29, 1944.

**Church Services**

**ST. JOSEPH'S CATH. CHURCH**  
Rev. James T. Twomey, Pastor  
Fr. Martin J. Sleasman, C.M., Assistant Pastor  
Sunday Masses at 7:00, 8:30 and Low Mass at 10:00 a. m.

**REFORMED CHURCH**  
Rev. John C. Chatlos, Pastor  
Sunday School, 9:30 a. m.  
Worship Service, 10:30 a. m.

**ELIAS LUTHERAN CHURCH**  
Rev. Philip Bower, Pastor  
Sunday School, 9:15 a. m.  
The Service, 10:30 a. m. The Rev. Ivan Sterner, vacation Guest Minister.

Pastor Philip Bower has announced the banns for the marriage of Dorothy D. Deming to Frederick J. Bower, to take place Saturday, August 22, 1959 at two o'clock and for the marriage of Sarah Barbara Hays to John H. Wilson, to be solemnized, Saturday, Aug. 29 at two o'clock.

**TRINITY METHODIST CHURCH**  
Rev. Cameron W. Johnson, Pastor

Worship Service, 9 a. m.  
Church School, 10:00 a. m.  
Junior Choir, 7:30 p. m.  
Sunday School, 9:30 a. m.  
Worship Service, 10:30 a. m.

**PRESBYTERIAN CHURCH**  
Rev. Wm. M. Hendricks, Pastor  
Church School, 9:45 a. m.  
Morning Worship, 11:00 a. m.

**GRACE BAPTIST CHURCH**  
Lower Tract Road  
Rev. H. N. Brownlee, Pastor  
Church service, 9:30 a. m.  
Sunday School, 10:30 a. m.

**TOM'S CREEK METHODIST CHURCH**  
Rev. Cameron W. Johnson, Pastor  
Church School, 9:00 a. m.  
Worship Service, 10:00 a. m.

**ST. ANTHONY'S SHRINE**  
Rev. Vincent J. Tomalski, Pastor  
Masses on Sunday at 7:30 and 9:30 a. m. Confessions Saturdays at 3:30 and 7:00 p. m.

**Fairfield Services**

**ZION LUTHERAN CHURCH**  
Sunday School, 9:15 a. m.  
The Service, 10:30 a. m.  
Luther League, 7:30 p. m.

**ST. JOHN'S EV. REFORMED**  
Rev. Mark B. Michael, Pastor

Sunday School, 10:00 a. m.  
**LOWER MARSH CREEK PRESBYTERIAN**

Edwin P. Elliot, Pastor  
Worship Service, 9:00 a. m.

**FAIRFIELD MENNONITE**  
Rev. Lamont A. Weelk, Pastor

**Worship Service, 11:00 a. m.**

**ST. MARY'S CATH. CHURCH**  
Rev. John J. McAnulty, Pastor  
Masses at 7:00 and 9:00 a. m.

**Spend Day At Lake**

A group of local residents spent a day at Laurel Lake last week. Included were Mrs. Fred Wolfe; Mrs. Oscar Wolfe; Mrs. Robert Little and children, John and Phil; Mrs. Donald Byard and children, Mike, Marty and Donald; Mrs. Paul Sherwin and children, John and Mary Kay; Gene Lingg; Tom and Dorothy Humerick; Mrs. William Martin and children, Tony, Eugene, Denny and Bruce; Mrs. Donald Waters and children, John, Maureen and David; Mrs. Louis Orndorff and children, Lisa and Michael; Mrs. James Adelsberger and sons, Eddie, Kenny, Bobby and Roy; Mrs. Robert Myers and daughters, Jeannie and Barbara; the Rev. Martin J. Sleasman; Mrs. Charles B. Shorb and children, Lynn, Mike, Karen, Pat and Kerry, and Miss Carolyn Umbel.

**Sponsor Social Affair**

St. Joseph's Sodality will sponsor a bingo game on Tuesday evening, August 25 starting at 7:30 p. m. on the rectory grounds of St. Joseph's Rectory. A nice array of prizes will be featured and refreshments will be on sale. Should rain prevail at the date

of the affair it will be transferred to St. Euphemia's Recreation Hall.

**Licenses Suspended**

The State Motor Vehicle Dept. this week announced the suspension of driving privileges for David L. Hewitt R3, Emmitsburg, for 15 days and John A. Portner, R2, Thurmont for one month.

Hear about the toothless termite who went into the tavern and asked, "Where is the bartender?"

**C-O-A-L**

SUMMER PRICES

ORDER NOW AND SAVE MONEY

**EMMITSBURG FEED & FARM SUPPLY**

Phone HI. 7-3612

**JUST ARRIVED!**  
**FOR FALL**  
**Ladies' Sweaters Skirts and Blouses**

**HOUCK'S**  
Center Square  
Emmitsburg, Md.



Get All Your Supplies on One Shopping Spree at B. H.

Boyle's where you'll find a complete line of

**Boys' and Girls' School Supplies**

- Tablets
- Rulers
- Pens & Pencils
- Pencil Cases
- Ink
- Crayons
- Chalk
- Book Bags
- Looseleaf Binders
- Compasses
- Zipper Cases

**B. H. BOYLE**

PHONE HI. 7-4111 EAST MAIN STREET EMMITSBURG, MD.

## ANNOUNCING EMMITSBURG BOWLING CENTER

NOW EQUIPPED WITH

**Automatic Pinsetters**

BOWLING TO 6:00 P. M., 3 GAMES \$1.00  
AFTER 6:00 P. M., 35c PER GAME

**BOWLING LEAGUE MEETING ON WEDNESDAY, AUG. 26 AT 8:00 P. M., AT EMMITSBURG BOWLING CENTER**

Any Individual or Team Wishing to Bowl in a League, please contact

**EUGENE MYERS**

222 West Main Street  
PHONE HI. 7-2202 EMMITSBURG, MD.

## EMMITSBURG BOWLING CENTER

WEST MAIN STREET, EMMITSBURG, MD.



**10% Discount on Case Lots of Whiskey**  
**Check Your Home Bar**

CIGARETTES — CIGARS — MIXERS — ICE CREAM

**BRANDY - MINIATURES - CORDIALS****Village Liquors**

"Always in the Best of Spirits"

Ralph F. Irelan, Prop.

Phone 7-3271 Drive-In Service Emmitsburg, Md.

# Get In On The Gigantic House-Cleaning Sale

At

**COFFMAN - FISHER**

ON THE SQUARE

GETTYSBURG, PA.

FRIDAY AND SATURDAY ... UNBELIEVABLE PRICE REDUCTIONS!