





# Emmitsburg Chronicle

EMMITSBURG, FREDERICK COUNTY, MARYLAND  
PUBLISHED WEEKLY ON FRIDAY

Published by CHRONICLE PRESS & ASSOCIATES, Emmitsburg, Md.  
CHARLES A. ELDER, Editor  
EDWARD G. STULL, Business Manager  
Phone Hillcrest 7-5511

All Communications and Checks Intended for This Paper Should Be Addressed CHRONICLE PRESS & ASSOCIATES, Emmitsburg, Md. Copy for Advertisements Must Be Received in This Office not Later Than Wednesday Evening to Insure Publication in the Next Issue.

Entered as Second Class Matter at the Postoffice at Emmitsburg, Maryland, Under the Congressional Act of March 3, 1879.

MEMBER MARYLAND PRESS ASSOCIATION, INC.  
and PENNSYLVANIA NEWSPAPER PUBLISHERS ASSN.

## TODAY'S meditation



THE WORLD'S MOST WIDELY USED DEVOTIONAL GUIDE

God commendeth his love toward us, in that, while we were yet sinners, Christ died for us. (Romans 5:8).

One of the greatest social reformers was Lord Shaftesbury of England. He fought for the emancipation of the factory worker, the miner, and the chimney sweep of the 19th century. His concern was for the children who were forced into labor. His heroic fight is one of the noblest chapters in the story of man's struggle for freedom.

He was asked on one occasion in the House of Lords why he was so concerned with such people. He replied, "I have undertaken this task because I regard the objects of it as being created like ourselves, by the same God, redeemed by the same Saviour, and destined for the same immortality."

In saying this, he not only revealed the secret of his own esteem of his fellows, but also made plain the only true basis of reverence for human life. What transformation we would see if all men, everywhere, believed as he did!

**PRAYER**  
O God, we see how highly Thou dost regard us, for Thou didst

make us in Thine own image. When that image was marred by sin, Thou didst send Christ to be our Saviour. We consecrate our energies to overthrow all that disregards the sacredness of human life. In Jesus' name. Amen.

**THOUGHT FOR THE DAY**  
I will remember that Christ died for every man, woman, and child I shall meet today.  
M. A. McDOWELL  
(New Zealand)

The idea that you must instantly cut the throat of any animal to bleed it as soon as you have shot it is erroneous and out of date, according to Sports Afield. The butcher does it, but he stuns or brains a meat animal first, then hangs it up by its hind legs, cut the throat deeply, and the blood pours out, insuring better meat. You cannot do this in the woods; besides, a modern bullet destroys so much tissue, the cavity fills with blood immediately, and the cutting of the throat would not help this blood to escape.

Horses and ponies should be vaccinated against sleeping sickness before warm weather brings mosquitoes.

### Muddy Water Fishing Under Study

**Muddy Water Psychology**  
Do you stay home when the Potomac or its feeder streams are muddy? Too muddy for fishing you think.

Perhaps you think fish can't be caught. Some interesting studies on fishing success in muddy waters of all stages are being conducted by the Potomac River research team of the Game and Inland Fish Commission under project leader Albert Sanderson. Surprisingly enough, creel census at Lander in Frederick County reveals that fishermen are more affected by roiled waters than fish. That is, the fishermen who stay home.

Those who go with the expectancy of catching fish usually have fair to good luck measured in terms of fish caught per hour. Talbot Himes, State creel census taker at Lander, reports that during the past week when the river was very turbid and had risen 27 inches above its previous level considerable numbers of smallmouth bass were caught along with large strings of catfish weighing up to six pounds apiece. Best bass fishing was had by anglers fishing on bottom with worms and minnows. The luckiest bass fishing party so far this season caught 46 smallmouths, twenty of which were over ten inches, the legal size. However,

only four of the "keepers" were taken home. The remainder were carefully put back alive to grow to "lunker" size. Studies of the fish population in the Potomac show that there are some species existing in abundance which are seldom caught.

From a total of 2515 fish hooked in twenty days at Lander, less than a half dozen each of bluegills, carp, suckers or crappie have been caught. Fish population studies using electric fish shockers, fish traps, and seines show plenty of 8 to 10 inch bluegills and crappies weighing up to a pound. Needless to say only a few carp and suckers have been caught even though they are abundant. The harvesting of rough fish in order to keep pace with the harvest of desirable game fish species and thereby to preserve the present favorable balance of species is of great concern to your Commission. The present revenue from the \$1.50 license is not adequate to carry out modern fishery science practices which could make the sportman's day even more enjoyable.

A map showing the good "fishing holes" for the different species of fish near Lander is on display at the creel census booth. Creel census taker Himes will be glad to tell anglers about the fishing gear and methods used to catch the different kinds of fish according to Ernest A. Vaughn, Director of the Game and Inland Fish Commission.

### Farm Exports Show Increase

U. S. Farm Exports show rise in the 1955, '56 period as various programs backed by Farm Bureau begin to boost foreign trade.

The increase of 10% for farm products is attributed to several new trade policies. Foreign spending is up and the results of selling farm surplus abroad for foreign currency as P. L. 480 has helped.

Farm Bureau points to the \$3-billion authorized under P. L. 480 by the 84th Congress. The original of \$1.5 billion authorized resulted in the sale of 158-million bushels of wheat; 56 million bushels of feed grain; 10-million bags of rice; 1.7 million bales of cotton; 126 million lbs. of tobacco; 88 million pounds of dairy products; 1 billion pounds of fats and oils; 3 million pounds of poultry; 82 million pounds of fruits and vegetables; and 76-million pounds of meat.

This new appropriation will help move more surplus farm commodities abroad and thus strengthen the home market. It also converts farm surplus goods into foreign money the United States government may use for projects abroad, thereby converting the burdensome inventories into usable cash to help the taxpayers of the country.

Capitalism in this country has tripled production in 40 years; it has cut the industrial work-week from 49 to 41 hours—or even fewer; it has increased real wages nearly two and a half times; it has tripled home ownership; it

has multiplied by four or five times the number of young persons receiving higher education. It has cut infant mortality by 75 per cent and reduced the general death rate by about a third." —New York (N.Y.) Times.

### See us for Al deals, convenient payments

- 1955 Ford V-8 Ranch Wagon; 13,000 miles; like new.
- 1955 Ford Tudor, R&H; Overdrive. Two-Tone Paint.
- 1954 Chevrolet 210 Fordor; R&H; 16,000 Miles.
- 1953 Dodge Fordor; Heater.
- 1953 Ford Victoria; O.D. and R&H.
- 1953 Ford V-8 Tudor; R&H; extra clean.
- 1953 Plymouth Fordor; O.D.; R&H.
- 1951 Ford Custom V-8 Tudor; Heater.
- 1951 Ford V-8, Victoria; Fordomatic; R&H.
- 1950 Ford Custom Club Coupe V-8; R&H.
- 1950 (3) Ford Custom Fordors; R&H.
- 1950 Chevrolet Tudor, Deluxe. Clean.
- 1947 Chevrolet Fleetline Tudor.

- 1955 Ford 3/4-Ton Pickup; 4,000 miles; like new.
- 1953 GMC 1/2-Ton Pick-up; 7 1/2-ft. Body.
- 1936 Chevrolet 1 1/2-ton Truck, Stake Body; good farm truck.

NEW CARS & TRUCKS READY FOR DELIVERY

## SPERRY'S GARAGE

"4-Letter Ford Dealer For 1955"

Phone 7-5131 Emmitsburg, Md.  
Open Evenings Til 8 P. M.

Quality  
You  
Trust...  
now in  
King-Size  
too!



12-OZ. BOTTLES



For a king-size thirst it's mighty nice  
Just right, too, for "two with ice."

The world's most popular quality drink now comes to you in a new king-size bottle. King-Size Coke! Here's another convenient way to serve the real thing in refreshment. Bright, bracing Coca-Cola. Same quality you trust, same sparkling taste no one has ever matched. Almost everyone appreciates the best, so it's smart to have plenty of Coke on hand.

Fifty million times a day... at home, at work or on the way

"There's nothing like a Coke!"



Now! buy cartons of both King-Size and Standard-Size for every home occasion

## CRAB FEAST

Tasty Michelob Beer on Draught

SPONSORED BY

VFW MEMORIAL POST 6658

Rowe Annex, Center Square, Emmitsburg, Md.

FRIDAY, AUGUST 31

7 P. M. Until ?

DANCING TO ORCHESTRA MUSIC

Tickets On Sale at the Post Home

\$1.25 Per Person



Check how much you need to spend . . . check what you can save. Then, quick . . . deposit your savings and check careless spending. Do this every pay-day and keep your savings account "on the grow." When you check it for size, you'll see how bank interest swells the total. Don't let anything check you . . . start saving now . . . and keep on saving!

## THE FARMERS STATE BANK

EMMITSBURG - MARYLAND

Member of the Federal Deposit Insurance Corp.

2% Interest Paid on All Savings Accounts

—All Deposits Insured Up to \$10,000—

BOTTLED UNDER AUTHORITY OF THE COCA-COLA COMPANY BY

## FREDERICK COCA-COLA BOTTLING COMPANY

CHARLES K. TAYLOR, Manager

1801 N. MARKET STREET

NEW SIZE AVAILABLE AT DEALERS IN ALL OUR TERRITORY

PHONE MONument 2-2571

© 1955, THE COCA-COLA COMPANY

"Coke" is a registered trade-mark.



A Grass-Roots Message

Ralph Waldo Emerson, the great poet and essayist, observed that: The wise man's hearth is the earth—his hall the azure dome.

In his talk on the problems of American agriculture at the National Education Program's recent Freedom Forum, Roger Fleming spoke some words of wisdom.

Fleming was born and reared on an Iowa farm, is a farmer and the son of a farmer, and today is one of the top executives of the American Farm Bureau Federation.

For and Against

"I want to examine the idea of being for what you're for and against what's inconsistent with what you're for.

"You don't have to worry

about being negative if you know what you're for. Seven of the Ten Commandments start out: 'Thou Shalt Not.' Who is prepared to argue that this is a negative document?

Against Codling Moth

"Eah spring I get down into the Shenandoah Valley of Virginia. I suppose there are people down there who see the orchardists spraying those great apple orchards in the spring, who probably assume that those doggone farmers are against the codling moth; but they aren't—they're for apples!

"I was in New England last week. The folks up in New England have heard about a fellow on a pony, and if you've read your history books you've read about him too.

we're for and we don't all understand completely the threat to what we say we're for. "We in the Farm Bureau are seeking to understand the implications of the choices we make on all these things.

SPORTS AFIELD By Ted Kesting

This is the varmint hunting season, when sportsmen are out sharpening up their eyes and guns for opening day.

I know of one instance where a pair of slingshot hunters in Texas bagged 104 jack rabbits.

Outdoor writer Byron Dalrymple, who is quite a hunter with conventional weapons too, says that pellet guns usually have an effective range of about 100 feet, and that they are deadly on small varmints, within their limits.

It is a fine measure of the avid enthusiasm of varminters that a great number of varminting gadgets have been put on the market by varminters themselves, and not by professional manufacturers.

One final word about calls—the varminters best known gadget. In my opinion a record is as import-

Girls Vie For Queenship At State Fair

Farm Bureau queens from each of Maryland's 23 counties competed for the title of Maryland Farm Queen at 8 p. m. Aug. 29, before the grandstand at Timonium State Fair Grounds.

The contests were conducted by the Associated Women of the Maryland Farm Bureau, under the direction of its president, Mrs. Atlee Armour of Rising Sun.

Qualifications for the contest provide that the girls must be 16 to 18 years old, unmarried, and be from a farm family.

The objective of the contest is to name the most typical farm girl in the Free State.

August 29 was a busy day for these 23 farm girls as they were on TV programs from 12:30 to 1 — some on WBAL, others on WAAM.

New Insurance Clause Benefits Policyholder

At the 1956 session of the Md. General Assembly, a new statute was enacted which adds two additional paragraphs to Section 152 of Article 48A.

Under the provisions of the new law, every purchaser of an accident and sickness policy is entitled to surrender the policy within not more than ten days after its delivery and to obtain a pro-rata refund of the premium paid.

This statute was enacted because of the many complaints which the State Insurance Department received from policyholders indicating that the contracts when delivered did not contain all of the coverages promised by the soliciting agent.

The State Insurance Commissioner requests all policy holders to review their accident and sickness policy contracts when they are delivered so that they may take advantage of the surrender privilege granted them under the 1956 statute if they are not fully satisfied with the contract which has been received.

ant as the call, and perhaps more so. If possible, get the record offered by the firm who made the call you use. Tones are thus sure to match. Also, be sure that you get the long-range predator record if you have a long-range call, and vice versa.

RCA — SYLVANIA — ZENITH TELEVISION SALES & SERVICE MATTHEWS GAS CO. EMMITSBURG, MD. THURMONT, MD.

Peaches Orchard Fresh — Picked Daily White Hale Brachett (Yellow) Elberta (Yellow) Prune Plums Summer Rambo APPLES

ODORLESS WONDER-ALL ERH PAINTS

CLOYD W. SEISS PHONE HI. 7-4711 DePaul Street Emmitsburg, Md.

FOREST PARK - Hanover, Pa. SATURDAY, SEPTEMBER 1 ALL AMUSEMENTS OPEN SUNDAY, SEPTEMBER 2 FREE SHOW By The Rocky Mountain Boys Spend Labor Day, Mon., Sept. 3 Here! SPECIAL ATTRACTIONS

ANNUAL PICNIC OUR LADY OF MT. CARMEL CHURCH LABOR DAY, SEPTEMBER 3, 1956 1:00 P. M. 'Til? Camp Greentop CATOCTIN MOUNTAIN PARK, THURMONT, MD. CHICKEN DINNERS Served Family Style—Adults \$1.25; Children, 75c MUSIC—SWIMMING—GAMES

WE ARE CELEBRATING OUR SECOND ANNIVERSARY We wish to thank all of you for your patronage during the past two years and we sincerely hope that we can be of service to you in the future. Many Many Thanks to All of You From: Lumen F. Norris J. William Payne ANNIVERSARY SPECIALS: Full Quart Bourbon, \$4.25; Rye Blends, \$4.14 Qt. Full Quarts Gin, \$3.99 and \$4.35; Scotch, fifth, \$4.99 Many Other Specials on Scotch, Gin, French and German Wines ICE COLD BEER In All the Popular Brands SOFT DRINKS—ICE CUBES—CRUSHED IC7 VILLAGE LIQUORS Drive-In Service In Rear Of Building FREE DELIVERY "In The Best of Spirits" FREE DELIVERY PHONE HI 7-3271

RUBBER STAMPS MADE TO ORDER RECEIVED KEYS

Any size of type on any size RUBBER STAMP from the very smallest to the very largest. Hi-quality RUBBER STAMPS ruggedly built to last you years and years, longer. Faster service at prices far below what you would ordinarily expect to pay. Come in and see us on any RUBBER STAMP needs that you may have. We also have a wide selection of MARKING DEVICES for your business and private needs.

CHRONICLE PRESS PHONE 7-5511 EMMITSBURG, MD.

ALTERNATIVE COMPENSATION

New Coverage Introduced by Nationwide Ins. Co. March, 1956!

This Coverage is Optional and is not the only Medical Payment coverage offered. \$500, \$1,000 and \$2,000 Medical Payments are offered to Policyholders if they do not want Alternative Compensation.

Why should an Auto Owner have Alternative Compensation?

- It gives each member of the Family Protection against loss by any type of Automobile Accident. 1—\$4,000 Accidental Life Insurance. 2—\$2,000 Medical Payments. 3—\$5.00 per day for 180 days, if disabled as a result of auto accident.

(Note: Children under age 18, Life and Disability are one-half of the above limits and Medical Expense remains the same.) This is written with regular Auto Liability Policy and all Nationwide Policyholders who desire to have more information concerning this coverage, call your local Nationwide Insurance Agent listed below.

If you now have Medical Payments, deduct that cost from the cost of Alternative Compensation and you will have the additional cost of this coverage that will cover you and your family, any passengers in your automobile, pedestrians or occupants of another car you might be involved with—up to \$6,000 per person!

Contact: Paul W. Claypool Phone HI. 7-4274 Fire—Auto—Life—Liability Accident & Health (Family Hospitalization) NOTARY PUBLIC S. Seton Ave., Emmitsburg, Md.

ELECTRIC COOKING IS FAST ELECTRIC COOKING IS EXACT ELECTRIC COOKING IS THRIFTY ELECTRIC COOKING IS WHITE GLOVE CLEAN ELECTRIC COOKING IS PREFERRED BY OVER 66,000 MODERN HOUSEWIVES IN THIS AREA THE POTOMAC EDISON CO.

What is the Difference BETWEEN BUDGET, MEDIUM, and LUXURY-PRICED PERMANENT WAVES? You Should Know — and with Realistic We Can Demonstrate It to You Don't be bewildered by the difference in cost of permanent waves. With Realistic Permanent Waves there is a definite reason for the difference and we can demonstrate it. Whether you prefer a style that demands tight, snappy curls or soft, molded waves—you can have exactly what you want with a Realistic wave. What is more, Realistic offers a special prescription wave for every type and condition of hair. BEAUTY NOOK Mrs. Virginia R. Elder, Proprietress For Appointment Phone HI. 7-4871

**Zoning Committee Plans Open Meeting September 18**

The Planning and Zoning Commission of Frederick County has set Tuesday, September 18 for the Official Public Hearing to be held on the proposed interim zoning ordinance for the unincorporated areas of the county. The hearing will be held in the auditorium of Winchester Hall at 8 P. M.

Members of the commission have been at a loss to understand the apparent lack of interest in their proposal which will

effect the larger land areas and the greatest segment of the county's population. Plans have been made for more widely publicizing the proposal because of the sparse attendance at recently held public information meetings in the rural areas of the county. The proposal as is now drafted is subject to change that might be made based on suggestions received at the public meetings and resolved into the final recommendations which will be turned over to the Board of County Commissioners.

In 11 years under Coach Bobby Dodd, Georgia Tech has won 91 football games, lost 27, tied 3.



**You'll Like Our Service**

**FREE PICK-UP AND DELIVERY SERVICE**

LUBRICATING • WASHING OIL CHANGING - TIRE SERVICE

NEIGHBOURS ESSO

EMMITSBURG, MD.



**JUST THE RIGHT AGE**—Reverend Frederick W. May, of Holy Cross Church, Baltimore, demonstrates to two young guests at his recent church carnival the proper method for disposing of trash. Reverend May attributes to the use of properly painted and labelled containers a more than 50% reduction in cleaning up operations after the carnival.

**NATIONAL CHILD SAFETY WEEK—SEPTEMBER 2-9**



"Your policeman is always ready to serve you." The opening of school brings new dangers to thousands of children each year, but the close cooperation between parents, teachers, police and school officials and the motorist, can greatly reduce accidents to school children.

Mr. C. Ernest Wood, President of the American Safety League states that there are thousands of little tots who are to go to school for the first time and that it is the parent's duty to go with their child and teach him how to cross streets, stay on sidewalks and not to play while going to and from the school. Teachers will also stress to their scholars the need for care and caution in their daily trips to and from school.

Police and school officials will try and get the Safety Junior Patrols functioning as soon as possible and traffic officers will do their utmost in preventing accidents.

But the "man behind the wheel" must realize that thousands of children who have been on vacation all summer long are now back to school and he must observe bus stops, school zone signs and especially children darting out into the street.

"National Child Safety Week" is designed to achieve greater awareness by Mr. and Mrs. Motorist of their individual responsibility at this critical season of the year. The pressing need is for more cautious and courteous drivers; stricter adherence to the rules of the road and greater mindfulness of the security of others.

So let us take every possible precaution for National Child Safety Week, all week, and get the habit for every week in the year.

**Mobile X-ray Unit Appreciative Of Paper Publicity**

Editor, Emmitsburg Chronicle

The Frederick County Tuberculosis and Public Health Assn. wishes to thank you and the members of your staff for the excellent coverage given to the Mass X-ray Survey in Emmitsburg and the vicinity.

We also appreciate the capable assistance given by the volunteers who served as registrars and of those who distributed posters, literature, and schedules.

Through the combined efforts of all, it was possible for us to X-ray an average of one person every minute during which the Unit was in operation in Frederick County. Your tuberculosis association is indeed grateful for the interest you have evidenced in helping us carry on our program for the eradication of tuberculosis in this county.

JOSEPH D. BAKER

"Automation, eyed with trepidation in some quarters, is helping small business compete with big business. Automation saves 'in labor, parts rejections, production time, machine maintenance and production space,' one maker of machines says. Another reports selling more automation machinery to shops hiring less than 500, some two and three-man shops, than to bigger factories. Looks like inventiveness and know-how were again doing a job."—Utica (N.Y.) Observer Dispatch

Farmers who dust their orchards or crops with DDT to kill insects, are advised to keep dogs away from those areas. Veterinarians report that dogs running loose in DDT-dusted terrain may develop difficulty in breathing, watery eyes and swelling in the head and neck.

**NOTICE!**

**Our grinding and mixing machine is now in operation. We have a line of supplements to take care of your mixing needs.**

**Emmitsburg Feed & Farm Supply**  
HI. 7-3612 EMMITSBURG, MD.

**YOUR SOUTHERN STATES COOPERATIVE SERVICE AGENCY**

**PUBLIC SALE**

Due to the condition of my health, I will offer at Public Sale on my premises, located on the Annandale Road just off the main highway leading from Emmitsburg to Frederick, Md., near Mt. St. Mary's College, on

**Saturday, September 8, 1956**

At 1 P. M., Sharp.

the following property to-wit:

**REAL ESTATE**

My farm consisting of 41 acres, more or less, with 14 acres of clear land. Improved with 9-room Brick House with electricity, furnace and bath. Double garage and all necessary out-buildings. 28 acres of good timber oak and locust. Possession November 1.

TERMS—One-third Cash on Sale Day and balance when sufficient deed is ratified and delivered. This is a fine little home.

**CARPENTER'S TOOLS**

Lot of good Carpenter Tools of which a lot are new; half-dozen saws; 4 braces, 3 are new; levels; hammers; plainers; squares; bevels; chisels; carving tools; plow plainer and bits; set of heading plainers; 2 iron kettles and stand; grind-stone; wire stretcher; block and fall; 20-ft. ladder; wheelbarrow; 25 locust posts; 3 wood tubs; 10 doz. good jars; stone jars; 8-5 gal. churn; set of stylards; lawn mower. Lots of forks, cradle, hog trough, three large clamps, several small clamps. Lot of other articles too numerous to mention. Some lumber and furniture. Sausage grinder and press.

TERMS—CASH.

**EDWARD ROSENSTEEL**

EARL BOWERS, Auctioneer  
C. HAINES, Clerk

**Transit-Mix CONCRETE**

**M. J. GROVE LIME COMPANY**

THURMONT, MARYLAND

*Inquiries Invited*

(SATURDAY DELIVERIES 7 A. M. TO 12 NOON)

**PHONES**

THURMONT

FREDERICK

6381

MO. 2-1181

**PUBLIC SALE**

Due to the recent death of my husband, I will sell at Public Sale on my premises located at the western edge of Emmitsburg, Md., known as "Stonehurst" on

**SATURDAY, SEPT. 22, 1956**

AT 12 O'CLOCK SHARP

the following valuable items to-wit:

**HOUSEHOLD FURNISHINGS**

Eight-piece Mahogany Diningroom Suite, in the best of condition; Tilt-top Table to match Duncan-Phyfe design; drop-leaf and gate-leg Table; Mahogany tilt-top Card Table; 2 Lounge Chairs; Wall Whatnot; Fire-place Set made by the Frailey family; small Mahogany Secretary; Ivory 6-piece Bedroom Suite; Telephone Stand; Maple Lamp; Singer Sewing Machine; Mahogany Record Stand; Walnut Chair; Walnut End Table; large End Table and Mirror to match; Maple Chest of Drawers; Writing Desk; Emerson Table Radio; 11x12 Wine Broadloom Rug; 9x12 Wine Loom Rug. Lot of Pictures; sets of Vases and Candle Sets; old Telephone; Hamilton-Beach Mixer; child's Iron Stove. Lot of Window Shades and Neon Sign; Coat Rack; single Iron Bed. Lot of Throw Rugs; 2 Clothes Hampers; lot of other good Rugs; 2 Green Rugs, 8x10; 4 round-back Chairs; Breakfast Set; Kelvinator Refrigerator; Step-stool; Utility Cabinet; 3 Summer Bugs and runner; Piano Stool; large gilt-frame Mirror; Water Trough full of flowers; Umbrella Stand; Tea Cart; Round Metal Table; 2 Porch Rockers; 2 Wrought Iron Flower Stands; Church Bench; 4 long Benches; 5 Lawn Chairs; 2 ft. Scrapers; 2 Wheelbarrows; floor model Radio; Oriental Rug; 2 Floor Lamps; child's Rocker; lot of Brief Cases; lot of Storm Windows and Screens; Fire Screen; several Stools; 2 old Chairs; Croquet Set; 2 Card Tables; Boy's Bicycle; child's Maple Wardrobe; Mahogany 4-Poster Bed and Mattress; lot of rug padding; Aluminum Clothes Drier; single Maple Bed and Spring; Ping Pong Table; 2 pairs of Skis; high Bookcase; Chest of Drawers; Knee-hole Desk and Bookcase combined; Lawn Mower; Lime Sower; case of Drawers; child's Sleigh; Weather Vane; set of Chimes. Tools of all kinds; Vise; 2 Sleds, some Dishes.

**18 HEAD OF SHEEP**

Bobsled; 2 Sleighs; light Spring Wagon; Dump Wagon; lot of Harness; Wire Stretcher; Fence Posts; lot of Hose; Stick Wagon; Aluminum Ladder; lot of Locust Posts; Roller; Log Wagon; one-horse Wagon; Buckets. Hay by the Bale; tin-plate Stove; good double set of Harness; good Bridles; 2 strings of Sleigh Bells; Saddle and Saddle Chimes; set of dump wagon Harness; 3 sets of Brass Knob Harness and many other items too numerous to mention.

TERMS—CASH.

**MRS. WILLIAM A. FRAILEY**

EARL BOWERS, Auctioneer  
CARL HAINES, Clerk

**Wives Get Home They Wanted**

When America's housewives told the nation what they want in their homes of the future during the recent Women's Congress on Housing in Washington, D.C., it was a challenge to architects and builders.

Architect Rudolph A. Matern, of Jamaica, N.Y., took up the challenge and designed this home for Town Journal magazine, incorporating practically everything the women asked for into a spacious split-level home.

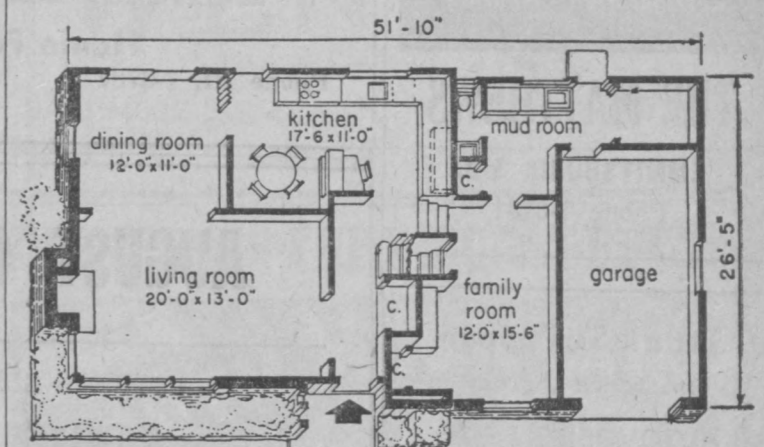
The kitchen with breakfast nook has windows overlooking the play yard, as the housewives suggested, and is near the family or recreation room and a separate laundry room.

There's a large living room with fireplace, separate dining room opening onto a paved patio, three bedrooms, each with double-sized closets, one-and-a-half baths, a garage with storage space and a basement. The main bathroom has both a tub and stall shower, plus twin lavatories.

One of the housewives' most persistent demands was for pitched roofs to give their homes distinction and color, plus an attic space.

The architect complied by designing an unusually distinctive pitched roof covered with asphalt shingles for color and long-lasting protection. Asphalt shingles come in a wide range of colors, including soft pastels and deep shades, making them adaptable to decorative schemes of all kinds.

Another important construction detail specified by the architect is thick mineral wool insulation throughout. The mineral wool, properly installed in all exterior walls, as well as in attic floors and the garage ceiling, eliminates "cold spots"



which have troubled some owners of split levels. A well-insulated house is more economical to heat in winter, stays cooler in summer, and is less-costly to air condition.

Among the more unique features of the house is a "mud room" requested by the housewives. It has a lavatory and is located off the play area so children and pets can be cleaned up when they come in.

Additional information, blueprints and specifications can be obtained from Rudolph A. Matern, 90-05 61st St., Jamaica 32, L.I., N.Y. Refer to Plan No. 9560.

**AUTOMOBILE INSURANCE**

—AT ITS BEST—

Mutual and Stock Companies  
15% to 20% Off Tariff Rates

NEVER A MEMBERSHIP FEE

NO ASSESSMENT EVER

Divided Premium Payments Over Six Months

—Pay Your Insurance As You Ride—

**Emmitsburg Insurance Agency**

—In Business Here Over 40 Years—

**J. WARD KERRIGAN**

100 E. Main St. Phone HI. 7-3161 Emmitsburg, Md.

**Every Day's a HOLIDAY!**

**MARYLAND STATE FAIR**

**TIMONIUM, MD.**

**Aug. 29 thru Sept. 11**

York Road (Route 111)  
6 miles north of Baltimore

- ★ Farm Queen Contest
- ★ 4-H Club Activities
- ★ Agricultural Exhibits
- ★ Midway Rides and Games
- ★ All-Star Nite Show
- ★ 8 Races Daily
- ★ Cattle, Swine, Sheep Judging

**Diamond Jubilee 75 Years of Progress**





