

## Most Anything At A Glance

BY ABIGAIL

Seeing the old burg decorated for the coming Christmas season really makes one feel that life is worth living after all. There's nothing that cheers me up at this time of the year more than seeing people get ready for the Yuletide. There prevails almost everywhere and with everyone. Seeing lights go up reminds me of the coming events such as the Christmas party the Lions Club puts on for the kiddies, the decorating contest sponsored by the Chamber of Commerce, the annual Community Carol Sing, and Christmas Day itself! All these affairs seem to put the added emphasis I need to get me in the right mood. Just think about a decade ago the town didn't even bother to decorate, officially that is. Oh yeah, several trees were placed on the Square and some homes displayed strings of lights or candles, emblematic of the occasion, but compare the difference today. Practically the whole community enters into the theme of the Yuletide and each year it becomes a mite larger. At present we have nothing to be ashamed of, in fact we can be proud of our town and when the lights do go on you'll see what I mean.

Everybody is remarking about the new roads we have been fortunate enough to obtain in the past year. The highway between here and Thurmont has been improved by the laying of new sections and is sure to draw more thru traffic once the word is spread via tourists and road maps. Tourists used to, on passing through, remark they'd never take Route 15 again going south as a result the town lost a heap of transient trade. Then again the same thing held true of the highway going to Waynesboro, Route 32 and Route 16. This has just been recently reopened to the public after extensive alterations and you can now buzz over to Waynesboro with the greatest of ease. The other two entrances east and north have been in pretty good condition for years. At any rate, after a few more improvements to Route 15 south of town, scheduled I am told, for the not too far away future, we will have four excellent traffic arteries bringing folks to and through our fair town. And speaking of Route 15, I recall the description of a guest speaker on a recent occasion here, when he described this route as one of the most scenic he has ever traveled and he has traveled far and wide. He especially eulogized the section from Gettysburg to Frederick and while he admitted the road itself wasn't too good, he related that the scenery was as picturesque as it was possible to find. We do have advantages here but sometimes we don't realize them.

Want to hear and see a good glee club? Then tune in on television Sunday afternoon when the Mount St. Mary's College Glee Club takes to the video lanes. More dope is available elsewhere in the "sheet" and I know you'll enjoy it immensely—if you like this type of musical entertainment. And speaking of the Mount, you basketball fans really are missing a treat if you don't follow the team this year. The boys are state champs and are defending their title vigorously this season. Many will attest to the prowess of this year's squad and its new coach, Jim Phelan. The Blue and White have been pouring it on decisively every game to date and Sunday afternoon they engage St. Francis of Loretto, Pa., a formidable foe. Many local fans have been attending the games and enjoying the fun, so if you haven't a previous commitment, I suggest you go out to Memorial Gym Sunday and take a good look at the boys and see some really hot basketball. You also can hear the contest broadcast over WFMD at about 4 p. m.

Just a word on the water situation folks. The condition is still potentially serious. Quantities are low and winter freezing threatens to tie up a large amount of our reserves. A lot of us have lost sight of the fact that water consumption restrictions are with us and we have been using the pre-

## Sewer Survey Completed; Estimate Asked

A complete survey of the additional sewerage system needed for Emmitsburg was presented to the Town Council at its regular monthly meeting held Monday night in the Fire Hall, President of the Board of Commissioners Thomas J. Frailey presiding and a full board present. Mayor Thornton W. Rodgers took an active part at the meeting after being absent for some time, due to illness.

Town Clerk Louise Sebold presented the reports of the clerk, treasurer and tax collector, all of which were approved as presented.

A letter of thanks was read from Charles D. Gillelan, who expressed his appreciation for the proposed installation of additional street lights in that section of the town's alleys. Christmas lighting for the town was discussed and workmen were busy this week installing the lights. An insurance policy with the National Sheriffs' Assn., was authorized for the Police Dept.

The treasurer announced parking meter collections for November as \$250.52. In addition there was \$44.45, reported in overtime parking and other fines, making a total for the month of \$294.97. Bills were ordered sent to 20 local property owners who had engaged the services of the town labor crew.

Street Commissioner Charles R. Fuss announced that most of the alleys have recently been stoned in addition to improving several others. Council okayed a permit authorizing Alvey Shorb to peddle meat within the corporate limits.

In view of the Christmas holidays in the office the Town Fathers have granted free parking over the Christmas weekend, beginning Thursday evening, Dec. 23 until Monday morning, Dec. 27 at 8 a. m. Cooperation of the town's car owners is asked in this parking privilege and it is pointed out that the purpose of granting the free parking is to benefit shoppers and local merchants.

Concerning the sewer survey, it was disclosed that about 7000 feet of sewer pipe would have to be laid and an additional pumping station installed to guarantee adequate facilities for the town. The E. Brooke Maxwell Corp., of Baltimore made the survey at the request of the Council and if the project is finished every house in Emmitsburg would have sewerage facilities. Council has asked for an estimate on the project which is believed to be in the neighborhood of \$75,000.

## Local Man Rises With Bendix Corporation

Mr. David J. Kerrigan, son of Mr. and Mrs. J. Ward Kerrigan, a Bendix field engineer assigned to Bendix Far East Air Forces Depot, APO 226, San Francisco, Calif., has been promoted to depot liaison engineer. In his new position he will coordinate activities of the Bendix mobile laboratory teams with units of the Fifth Air Force and will visit various air control installations in Japan, Korea, Okinawa and Guam. Prior to his assignment to the Far East, Mr. Kerrigan was employed as a mobile laboratory field engineer and visited installations in the eastern, central, and western air defense commands.

## Schola Concert To Be Televised

The Seminary Schola of Mt. St. Mary's will be featured on the Church Visible Program, Saturday, Dec. 11 over WMAR-TV, Channel 2 at 5:30 p. m. The Mountaineer Glee Club will be viewed on WAAM, over Channel 13 on December 12 at 4:00 P. M.

## FIREMEN HEAR DIRECTOR

Robert Byrus, director of Fire Extension School at University of Maryland, projected films on the latest methods of fire fighting and gave an interesting talk to members of the Vigilant Hose Co. at the Fire House last night.

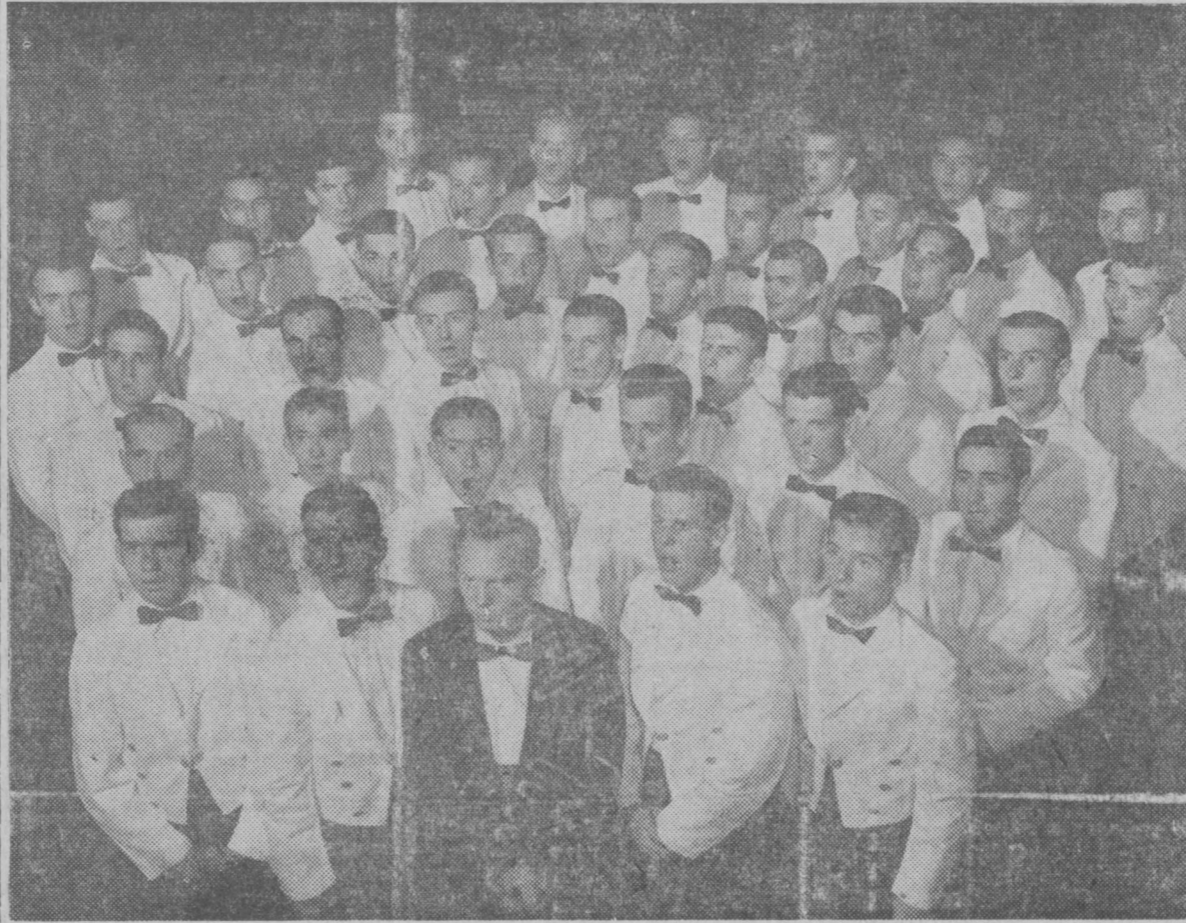
LAST SATURDAY

Mary Shields—\$22.50

THIS SATURDAY

\$231.00

## Glee Club To Present Christmas Concert Sunday



Members of the Mount St. Mary's College Glee Club which will hold its annual Christmas program on Dec. 12 at 8:15 P. M. in Memorial Gymnasium are as follows: Top row l-r, Randy Miles, Thomas Jacobi, Joseph Birkenstock, Clair Redding, Marzelle Braud, Eugene McKay, Donald Martindill, Charles DiMeglio; William Leitch, John Toland, Robert Stancik, Joseph Matan, Edgar Sutton, James Coyne, Leigh Scotti Richard Ensor; Robert Ianniello, Edmund Lenny, Henry Read, Joseph Alfano, Edward Kaminski, Richard McCarron, Thomas Carberry, Hugh Kelly; James Campbell, George Arnold, Roderick Carter, James Haverty, Philip Caulfield, William Beal, John McKinney, William Pioppi, Robert Post; James Scanlon, Robert Ponton, William Hartgen (accompanist), Paul McClatchy, David Ives and William Fanelli.

## Public Welcome To Charity Fair

Saint Joseph College will hold its annual Charity Fair for the benefit of the needy on Saturday from 2 until 9 p. m. in Verdier Building on the campus.

Christmas shoppers attending the fair will find gifts for all members of the family at such booths as the Gift Doll and Knitted Goods Booths. At these various booths many hand-made articles will be found.

Entertainment and variety seekers will find enjoyment at the Grab Booth, the Bingo Games or taking part in the novelty games that have been arranged for the fair.

Highlighting the event will be the contest for the Queen of the Fair, in which pennies count for votes. Class nominees for queen are Florence Reidy, senior, of Washington, D. C.; Ann Christie, junior, from Norfolk, Va.; Elizabeth Savino sophomore, Brooklyn and Vivian Bayouth, freshman, Mayaguez, Puerto Rico.

General chairman of the fair is Miss Gloria Ors of Wildwood, N. J., who is president of the Children of Mary, the organization sponsoring the event.

Friends and alumnae of the college are invited to patronize the Charity Fair.

## WINS STOVE

Mrs. Annabel Clingan, Baltimore, daughter of Mr. and Mrs. Charles Fuss, won the Happy Cooking gas stove awarded by the Matthews Gas Co. Thurmont store at its gala opening Nov. 19.

## High School Alumni Christmas Dance December 28

The Emmitsburg High School Alumni Assn. will hold its annual Christmas dance on Tuesday evening, Dec. 28, starting at 9 o'clock in the high school auditorium. Music for the occasion will be furnished by the Sportsmen Orchestra.

## Personals

Mr. and Mrs. Rudolph Warthen were delightfully surprised last week when they received a long distance telephone call from their daughter, Mrs. Henry H. Emerson. The call originated in Weisbaden, Germany, and came as a complete surprise. Mr. and Mrs. Warthen expressed amazement at the clarity of the conversation which lasted for five minutes.

Miss Juliet Eckenode, daughter of Prof. and Mrs. Bernard J. Eckenode, is confined to her home with the mumps.

Miss Annie Eckenode, St. Anthony's, who broke her right wrist last Friday in a fall en route to St. Anthony's Catholic Church, was treated at the Warner Hospital for the fracture and released. She is convalescing at her home.

Mrs. Minnie Hays continues to be a patient at the Warner Hospital in Gettysburg. Her condition is reported to be about the same.

## Christmas Concert By Glee Club Sunday Afternoon

The annual Christmas Concert of the Mount St. Mary's College Glee Club will be held on Sunday, Dec. 12 at 8:00 p. m. in the Memorial Gymnasium.

Under the direction of the Rev. David W. Shaum, the choraleers will offer a Musical Christmas Card ranging from traditional tunes such as Jingle Bells to Faust's Flower Song by Gounod.

Guest soprano soloist for the Christmas program is Miss Ann Sinclair, a native of Washington, who has frequently appeared with the National Symphony. James Coyne of Salem, N. J., is the bass soloist and Marzelle Braud of Baton Rouge, La., is the tenor soloist.

The Glee Club will also be featured over WAAM-TV on Dec. 12 at 4:00 p. m. in a Christmas Program. On Dec. 13 they will perform for the Emmitsburg Lions Club and on Dec. 15 for the Kiwanis Club at Taneytown.

## Seminary Schola Concert To Be Televised Saturday

The Seminary Schola Cantorum of Mount St. Mary's College, will be featured on the Church Visible Program Saturday, Dec. 11. The telecast will originate in the studios of WMAR-TV, Channel 2, Baltimore, at 5:30 p. m.

The Seminary Choir, under the direction of the Rev. David W. Shaum, will illustrate the liturgical year with musicale offerings. Gregorian Chant, hymnody and works of polyphonic masters will be heard. The Rev. Thomas Fannon, archdiocesan director of radio and television, will moderate the program.

The following program has been announced:

Advent — O, Come, O, Come Emmanuel—a hymn of longing and anticipation of the promised Saviour; Christmas, Adeste Fideles; Laetentur Coeli, the Offering of the First Mass at Midnight; Lent, Parce Domine, a hymn of mercy and contrition, Kyrie of Mass XVII; Passiontide and Holy Week—Pueri Hebraeorum from the blessing of Palms on Palm Sunday; Pange Lingua — St. Thomas Aquinas' hymn from the Divine Office of Holy Thursday; Christus Factus Est — Antiphon from Tenebrae — liturgical office of the last three days of Holy Week; Exsultet — from the Blessing of the Paschal Candle (the Rev. Mr. William Healey, a student for the diocese of Scranton, will sing this composition); Easter—Alleluia, Alleluia, Let the Holy Anthem Rise Ascension Day—Ascendit Deus—a polyphonic setting of the offertory of the Mass; Pentecost Sunday—Holy Spirit Lord of Light—a hymn depicting the events of the Birthday of the Church; Salve Regina—antiphon to the Blessed Virgin Mary from the Roman Brevary.

## Mountaineers Meet St. Francis Sunday

Jim Phelan's strong Mt. St. Mary's College basketball team chalked up its first Mason-Dixon Conference victory and second straight triumph of the season by walloping a completely outclassed Gallaudet team 97-45 Tuesday evening at Emmitsburg.

The Mountaineers led from the start to finish, and there was never any question as to the ultimate outcome.

Coach Phelan used his first stringers for the first 10 minutes and thereafter gave his entire bench action for the remainder of the contest.

At the end of the first half the Mount held a commanding 52-28 advantage.

Jack Sullivan, who connected for 13 points to lead the winners' scoring, played only one quarter. Five reserves broke into double figures in the scoring, Bill Williams with 12, Charley O'Donnell, Ed Bals, George Donohue and Tom Mullen with 10 each.

Mt. St. Mary's invaded Washington last evening and battled American U. in another conference game.

The Mountaineers return to their court for a Sunday afternoon game with the powerful St. Francis cagers of Loretto, Pa.

## Legion Gets New Members

The regular monthly meeting of the Francis X. Elder Post, No. 121, American Legion, was held Tuesday night in the post home with 65 members present, Commander Charles B. Harner, presiding.

New members voted into the post were Harold T. Oeao, John E. Kerrigan, Gettysburg; Thomas M. Leahy, T. J. Galvin, Eugene M. O'Malley, Clarence R. Orendorff and David A. Hart.

The Christmas party committee was announced by the commander as follows: Robert Myers, Clarence Shorb, William Sanders, Donald Topper, Richard J. McCullough, Andrew T. Shorb, Louis F. Rosensteel, Curtis D. Topper and T. Eugene Rodgers.

Thomas C. Harbaugh and Louis F. Rosensteel, co-chairman of the Legion blood bank thanked the following for traveling to Baltimore and donating blood to "Chick" Rosensteel, who was a patient at Johns Hopkins Hospital: Leo Topper, Donald Topper, Vincent Topper, Roger Adams, Andrew Shorb, Carl Wetzel, Eileen Wetzel, Cecil Kreitz, Alma Seltzer and Charlotte Miller.

The post voted to send a donation to Luther Kelly and Albert Shorb who are patients at the Newton D. Baker veterans hospital in Martinsburg, W. Va.

The door prize was won by Allen Bouey. Following the meeting refreshments were served by the Legion auxiliary and the Legion refreshment committee consisting of Robert Myers and Clarence Shorb.

Mrs. John Noonan and children of Philadelphia, spent the weekend with her parents, Mr. and Mrs. John M. Troxell.

## Nation To Observe "S-Day" December 15

Mayor Thornton W. Rodgers this week proclaimed Wednesday, Dec. 15 as "S-D Day" or Safe Driving Day and pledged the full support of the city government in making the project a success. He urged all citizens to do their utmost to keep Emmitsburg entirely free of accidents on Dec. 15.

"S-D Day" is sponsored by the President's Action Committee for Traffic Safety in cooperation with various national organizations, and State and local officials. It is a day to demonstrate that traffic accidents can be reduced materially when all motorists and pedestrians do their part.

Following is the Mayor's proclamation:

"Whereas the President of the United States has asked all Americans to unite in a nationwide demonstration that traffic accidents can be avoided if all motorists and pedestrians do their part; and

"Whereas, the Governor of our State has asked all of the communities in Maryland to support this worthy effort;

"Now, therefore, as Mayor of the town of Emmitsburg, I hereby proclaim Wednesday, Dec. 15, as 'S-D Day' in this community, and ask all citizens to drive and walk on this day so as to keep the entire 24-hour period free of traffic accidents."

Mayor Rodgers has designated Chief Daniel J. Kaas as Director of "S-D Day" activities for Emmitsburg. Gov. McKeldin has officially proclaimed Dec. 15 as "S-D Day" throughout the State of Maryland. Governors of other states have issued similar proclamations, in support of this nationwide undertaking, as the result of the appeal of President Eisenhower.

## Postoffice Holiday Hours Announced

Postmaster Louis H. Stoner announced this week the following Christmas postoffice hours: Tomorrow, Dec. 11 the service windows will be open from 8 a. m. to 6 p. m. From Dec. 15 to Dec. 24 the stamp windows and general delivery window will be open from 8 a. m. to 7 p. m. the registry and money order window will be open from 8 a. m. to 6 p. m. No money orders will be written after 6 p. m.

The last mail of the day now reaches the office at about 5 o'clock in the evening.

Patrons are urged to mail early to insure prompt delivery by Christmas. Greeting cards should be mailed for out-of-town delivery by December 10. Valuables should be sent by insured or registered mail. Air mail is recommended for speed, as is also special delivery service. When three cent stamps are used on greeting cards they can be forwarded without additional postage.

Patrons are requested to kindly cooperate and place mail for delivery in Emmitsburg and local rural routes in the mailbox that has been provided in the post-office lobby. Mail for delivery in other towns and cities should be placed in the regular drop as always.

The postoffice will be closed on Christmas Day, but mail put in the night drop of the front door will be dispatched on Xmas morning at 8:15 a. m. Special delivery and perishable parcels will be delivered within the limits prescribed on Christmas Day, immediately after receipt of mail at 8:30 a. m.

## EDMUND M. WELKER

Edmund M. Welker, 77, Taneytown, died at the Warner Hospital Monday evening at 8:15 o'clock. He had been admitted in the afternoon at 12:45.

Dr. C. G. Crist, Adams County coroner, investigated and said death was due to natural causes.

Among the survivors are a son, the Rev. Edmund P. Welker, Taneytown, with whom he resided, and two daughters.

Funeral services were held in Milton, Pa., Thursday where he was interred.

## SON BORN

A son was born Wednesday morning at the Warner Hospital in Gettysburg, to Mr. and Mrs. Charles Hobbs, Jr., Route 2, Fairfield.

Mrs. Maurice Hahn, who has been a patient at the Warner Hospital in Gettysburg for the past three weeks, is reported to be much improved.

## Mount Glee Club Plans Xmas Concert Sunday

Miss Ann Sinclair, a native of Washington, will be the featured soprano soloist at the Christmas performance of the Mount St. Mary's College Glee Club on December 12 at 8:00 p. m.



A graduate of the Catholic University with a B.A. degree in drama, Miss Sinclair is currently working on her M.A. in music. While in the drama department, she appeared in numerous university productions, plays and musicals, and also sang in the university productions of Martha and Trial By Jury.

In October, 1953, she appeared with George London in the concert version of Boris Godanov with the National Symphony. In Nov., 1953, she was the featured soprano soloist with the National Symphony in Israel Symphony, the premiere of that work in this country. Last month she repeated the Israel Symphony. She has appeared on radio and television and has sung on the Catholic Hour.

In the Glee Club Concert, Miss Sinclair will sing Frosty, the Snowman, Dunhill's "To the Queen of Heaven," and in company with the Glee Club, Adams' "Cantique de Noel."

## Lutheran Bazaar Saturday Afternoon

The annual Christmas bazaar of Elias Lutheran Church, Emmitsburg, will be held Saturday. Suppers, with choice of roast turkey and oysters and all that goes with it, will be served "family style," by the women of the church from four p. m. on.

Other features of the bazaar will include home-baked products, cakes, cookies, rolls, candy, fancy work, miscellaneous gift tables, second-hand store of clothing and other items.

The entire Parish House will be open and in use for the affair and more than 100 members of the parish will be helping with the work. According to the executive chairmen, Mrs. Roy Sanders and Mrs. Roy Maxell, everything is in ship-shod-shape for a gala old time Merry Christmas Bazaar and a large attendance is anticipated. The entire public is most cordially invited.

## Annual Carol Sing Planned

The second annual Christmas carol sing will be held on Thursday evening, Dec. 23, at 7:30 o'clock in front of the Emmitsburg Presbyterian Church under the direction of J. James Fisher, instructor of music at the Emmitsburg High School. The school band will accompany the singing.

A general invitation is extended to everyone and a special invitation to each to come and enjoy an hour of community carol singing.

Coffee and home-made Christmas cookies will be served to all.

## Basketball Games To Be Broadcast

Athletic Director John J. Dillon, Jr., Mt. St. Mary's College, announced this week that all home basketball contests will be broadcast over radio station WFMD, Frederick during the current season. The first play-by-play broadcast will be heard Sunday afternoon at 4 p. m., when the Mounties engage St. Francis of Loretto, Pa. Other night games will be aired at about 8:30 p. m., according to schedule.