

Emmitsburg Chronicle.

PUBLISHED EVERY FRIDAY AT EMMITSBURG, MARYLAND.

STERLING GALT, EDITOR AND PROPRIETOR.

TERMS:—One Dollar a year in advance; Six months, 50 cents. Trial subscriptions, Three months, 25 cents.

ADVERTISING RATES made known on application at this office.

THE PROPRIETOR reserves the right to decline any advertisements which he may deem objectionable.

NO ATTENTION whatever will be paid to anonymous contributions.

MANUSCRIPTS offered for publication will be returned if unavailable, when accompanied by stamps.

ALL COMMUNICATIONS intended for this paper should be addressed to THE EMMITSBURG CHRONICLE.

CHESAPEAKE AND POTOMAC and Frederick County Telephone connections.

Entered as Second-Class Matter at the Emmitsburg Postoffice.

Calendar for 1907 OCTOBER 1907 showing days of the week and dates.

MOON'S PHASES table with columns for New Moon, First Quarter, Full Moon, and Third Quarter.

FRIDAY, OCT. 4, 1907.

THE present exodus of West Virginia farmers from their State and the wholesale depletion of the population of that section of the country ought to furnish a lesson to farmers everywhere.

His aid is also demanded in the reforestation of the immense tracts that have already been depleted. This point bears directly on what occurred in the mountainous tracts of West Virginia, and is advocated by the Government as a means of almost immediately benefitting just such regions.

to his child, and one which he cannot conscientiously evade—a parent, let us repeat, who fails to do his duty in this particular should have to bear alone the consequences of his neglect.

MANY are apt to look askance sometimes at the idealistic plans for the relief of fallen humanity proposed by those outside of regularly established church organizations. They are apt to brush them aside upon the ground that every project pertaining to the reclamation of the unfortunate should have its origin in and be carried out by the church itself.

GOODS ON APPROVAL. Articles are gladly sent on approval (transportation charges paid both ways) to those known to us, or who will become acquainted by proper bank or business references.

REFRESH YOURSELF! I have started my SODA FOUNTAIN for the season. Ice Cream Soda, Soda with Plain Syrups, Sundaes and Phosphates. All flavors.

Mount St. Mary's College and Ecclesiastical Seminary. Conducted by secular clergymen, aided by lay professors.

THE HOME INSURANCE COMPANY, NEW YORK. ORGANIZED IN 1853. MAIN OFFICES: 56 CEDAR STREET, NEW YORK.

Cortright Metal Shingles MAKE THE MOST DURABLE ROOFING KNOWN.

JAMES G. BISHOP, AGENT, EMMITSBURG, MD. Sample shingles may be seen at this office.

ROWE'S LIVERY TEAMS AT ANY TIME AND FOR ANY OCCASION. SPECIAL ARRANGEMENTS FOR COMMERCIAL MEN.

Seasonable Display of Suit Fabrics. A superior and distinctive showing of Suiting, rivals all others in quantity, beauty, style and quality and surpassing all others in moderation of prices.

STATE TICKETS DEMOCRATIC TICKET. For Governor, AUSTIN L. CROTHERS, of Cecil County.

MARKET REPORTS. The following market quotations, which are corrected every Friday morning, are subject to daily changes.

EMMITSBURG. Corrected by Zimmerman & Shriver. Wheat, (dry)..... 65

LIVE CAPITAL TOPICS. FOR THE BENEFIT OF FARMERS

Almost the first act of the Executive on his return to Washington was to summon the Attorney-General and review the Oklahoma constitution.

Advice as to The Production of Corn, From an Eminent Authority.

SUMMARY OF IMPORTANT FACTS AND POINTS

Data Derived From Experiments.—Points as to Planting, Weeding, Cultivating And Soil Moisture.—This And Previous Articles on Corn Cultivation Cut Out And Preserved Will Make Invaluable Pamphlet on Subject.—Other Branches of Agriculture to be Considered.

Corn needs water and a particularly large supply of it during growth. "It has been estimated," says Mr. Shamel, "that for every pound of dry matter produced, the plant uses 300 or more pounds of water to produce this yield, it can easily be seen how important the conservation of soil moisture becomes. The moisture in the soil escapes by capillarity and by drainage.

ing results followed such injuries. ** This experiment was carried on for three years and at the end of that time the results were so uniform that the object was deemed to have been obtained. The pruning was done with a broad, flat, thin, and sharp spade-like instrument, which could be used to cut off the roots without injuring or interfering with the condition of the soil about the plant.

"The thickness of planting best suited to give the most profitable results will depend upon the race of corn, nature of the soil, character of climate, the purpose for which the crop is produced, and other factors. However, if yield alone is considered, the following table gives the most reliable data yet obtainable on this point:

Table with 2 columns: No. Stalks per Hill, Average Yield per Acre. Rows 1-4 showing increasing stalks and yields.

"There are two general systems of arranging the seed in the row generally followed, first grouping from 2 to 5 kernels in hills some distance apart, second, drilling the seed one seed in a place, along the row closely together. As a result of the latter method large yields of small ears were obtained."

"The vital principle of the cultivation of the growing corn plant is that the plants be allowed to grow undisturbed and without competition of other plants, with sufficient stirring of the surface soil to prevent the rapid evaporation of the soil moisture. In an experiment with pruning or cutting off the roots of the corn plant at the Illinois Agricultural Experiment Station, striking results followed such injuries."

A horse ridden by Mr. John Horner fell on Tuesday morning while going up Gettysburg street. Mr. Hoiner was not hurt. The habit of borrowing small sums of money—anticipating pay day—is a pernicious practice and breaks many a friendship.—Hubbard.

Unkel Bill sez he cud hav lots of fun but the blaim isent wirth the scandale.—Little Henry's Slate. Thirty-five chickens and one turkey were stolen from the coops belonging to Rev. Mr. Murray on Tuesday night.

What sounds so sweet as the human voice—to the one who is doing the talking?—Crankisms. Delicious Chocolate and Coconut Layer Cakes to order.—Baker's Tea Room. "I hit him," was the reply. "And did he fall?" "Did he fall? If he hadn't have fell I'd have went round back of him to see what propped him up."

If the unborn would heed my advice I would say, by all means be born in the country.—John Williams Streeter. A rich man can get the eye of the beadle.—Oliver Herford. The characteristic of a genuine heroism is its persistency.—Emerson. The roof of the Lutheran parsonage has been shingled.

The naval board urges the building of four monster battleships. Heavy frosts in parts of Pennsylvania on Monday night killed the corn crop.

Here are some other results of similar experiments: In a field where weeds are allowed to grow the yield in bushels per acre was 62; where the weeds were cut with the hoe and a loose mulch made with the hoe and with frequent cultivation the yield was 96. Where the corn was cultivated two inches deep with small shovels the yield was 90; where it was cultivated four inches deep with the same size shovel the yield was 91 bushels; six inches deep cultivation (small shovels) the yield was 84.

"In summing up the important facts of cultivation the following points should be emphasized:

- 1. The preparation of the seed bed should be such as to best conserve the soil moisture, and obtain the most favorable mechanical soil condition. 2. The cultivation of the growing crop should be such as to avoid all root injury, maintaining a loose surface soil mulch, and preventing the presence of all weeds or competing plants. 3. The method of planting and caring for the crop will depend upon local conditions to such an extent that it is necessary for every grower to make a thorough study of his peculiar condition of soil and climate in relation to his methods of cultivation. 4. The conditions of growth for the corn crop are moisture, heat, light, and plant food. The supplying of the conditions in the most favorable manner to the corn plants is the business of the grower, and will give the largest profitable returns.

These articles have been published by special arrangement with the compilers of The Encyclopedia Americana who hold the copyright.

THERMOMETRIC READINGS.

Table with 3 columns: Day, 8 A. M., 12 M., 4 P. M. Rows for Friday through Friday.

Case Dismissed.

The case of the State vs. George P. Stouter, accused by Bessie Bercaw of felonious assault, was dismissed by the last grand jury. Upon the most creditable information it is ascertained that the testimony of reliable witnesses exonerated Mr. Stouter and showed that the case was a put up job.

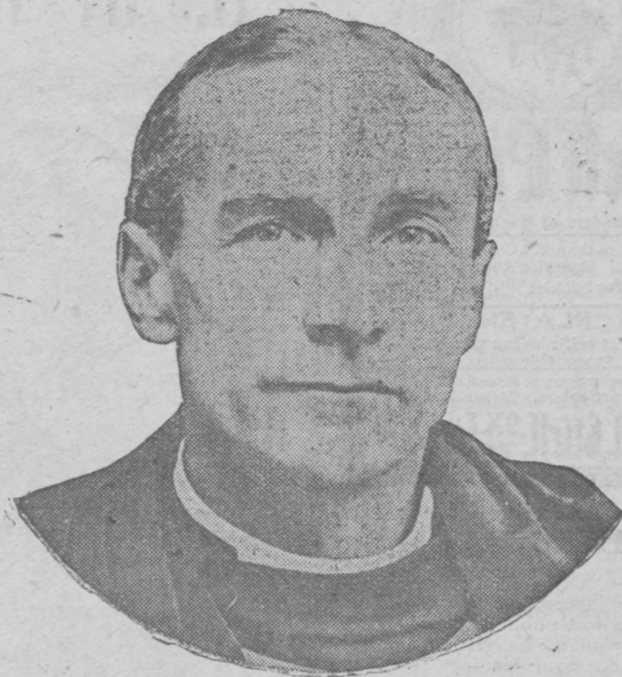
Contracted For Lime Stone.

The Commissioners held an important meeting on Wednesday night at which much important business of interest to the town was transacted. The most important act, however, was the granting of a contract to Daniel Roddy for lime stone for the streets of Emmitsburg. Work is expected to begin within ten days.

An Era of Progress at Mt. St. Mary's

Mount St. Mary's had an extra holiday a few days ago, the occasion being that the college enrollment had reached the unprecedented number of 250. Since then six more students have reported and others will soon matriculate.

Get your oysters served from Baker's Tea Rooms. Fried, Stewed, patted and by measure.



RIGHT REV. A. F. W. INGRAM.

In 1901, at what is, in the English ecclesiastical system, the exceptionally early age of forty-three, Dr. Winnington Ingram was raised to the full episcopate as head of the diocese of London—a diocese described by Canon Henson as the greatest in the world, with no less than 1400 names on its list of clergy.

His severest critics must admit that he has kept up to the high standard of industry set by the previous occupant of his chair. Bishop Creighton killed himself by overwork, and the friends of Bishop Ingram sometimes fear that he has not sufficiently profited by the warning of his predecessor's career.

Next to the administration of the affairs of his own diocese the most important sphere in which an English bishop can exercise his gifts of leadership is the House of Lords. In his appearances in that assembly Bishop Ingram has kept faithfully to the narrow ecclesiastical line pursued by the majority of the wearers of law sleeves.

But in all our lives, though time is given to eat, drink, sleep, work, and play, there is no moment given us to throw away.—A. R. Brown. How about confections? We have them. Our specialty—H. D. Foss, Boston, fine Chocolates and Bonbons.—Baker's Tea Rooms.

THE GREAT HAGERSTOWN FAIR

HORSE SHOW

will be held at Hagerstown, Md., October 15, 16, 17 and 18, '07.

The Horse Show will be held Wednesday, Thursday and Friday, beginning at 12:30 P. M., each of the above days.

Grand Stand Attractions Greater Than Ever.

Special Trains and Rates on All Railroads. For information, Premium Lists, Etc., Apply to D. H. Staley, Secretary.

CONTAINS HONEY AND TAR KENNEDY'S LAXATIVE COUGH SYRUP

Mothers endorse it Children like it Tastes so good E. C. DeWitt & Co. CHICAGO

ST. JOSEPH'S ACADEMY AND COLLEGE

FOR YOUNG LADIES, WITH PRIMARY DEPARTMENT.

PUPILS UNDER TEN YEARS OF AGE NOT RECEIVED.

This Institution, beautifully situated in a healthful location in sight of the Blue Ridge Mountains, is easily reached by Western Maryland Railroad from Baltimore. Extensive grounds afford ample advantages for outdoor exercise, the surroundings are attractive and picturesque.

SISTER SUPERIOR, ST. JOSEPH'S ACADEMY, EMMITSBURG, MARYLAND.

PLACE YOUR ORDER WITH

Zimmerman & Shriver

COAL TO BURN

Delivered to your Cellar Without Dirt or Dust in OUR SELF-DUMPING WAGON.

UNDERTAKER.

M. F. SHUFF

Modern Furniture, BEDS, MATTRESSES.

Hospitals, Hotels Institutions Furnished Throughout.

Special prices for Furniture in large quantities.

SEWING MACHINES.

CABINET WORK, REPAIRING. BOTH PHONES.

W. Main St., Opp. Presbyterian Church.

EMBALMER.

THE BEST ICE-CREAM In The Town.

There are various qualities of ice-cream but I have only

THE BEST.

It is known all over the county. Brick Ice-Cream, packed to order, a specialty.

C. T. ZACHARIAS July 12, 07-6ms

SOLID SILVER American Lever Watches, WARRANTED TWO YEARS, ONLY \$6.

G. T. EYSTER

Sep. 20-3t.

SOLD BY T. E. ZIMMERMAN.

aug. 2-1p

