

# The Emmitsburg Dispatch

VOL IV, No. 7

News and Opinion in the service of Truth

APRIL 7, 2005

## Cardinal Keeler announces death of Pope John Paul II

Baltimore's archbishop was at Mount St. Mary's for the celebration of the 200th anniversary of the Grotto

**Raymond Buchheister**  
Editor & Publisher

Cardinal William H. Keeler shared the news of the death of Pope John Paul II during an afternoon reception at Mount St. Mary's University on April 2.

Archbishop of the oldest Catholic diocese in the United States, Cardinal Keeler had come to Emmitsburg to celebrate Mass at the National Shrine Grotto of Lourdes, in what was the initial celebration of the Grotto's 200th anniversary.

In a press conference with his eminence Cardinal Keeler just

prior to the celebration of Mass, reporters' questions had focused more on the pope's health and Cardinal Keeler's scheduled trip to Rome, and less on the Grotto's anniversary. Even the cardinal's homily, in part, focused on the Holy Father.

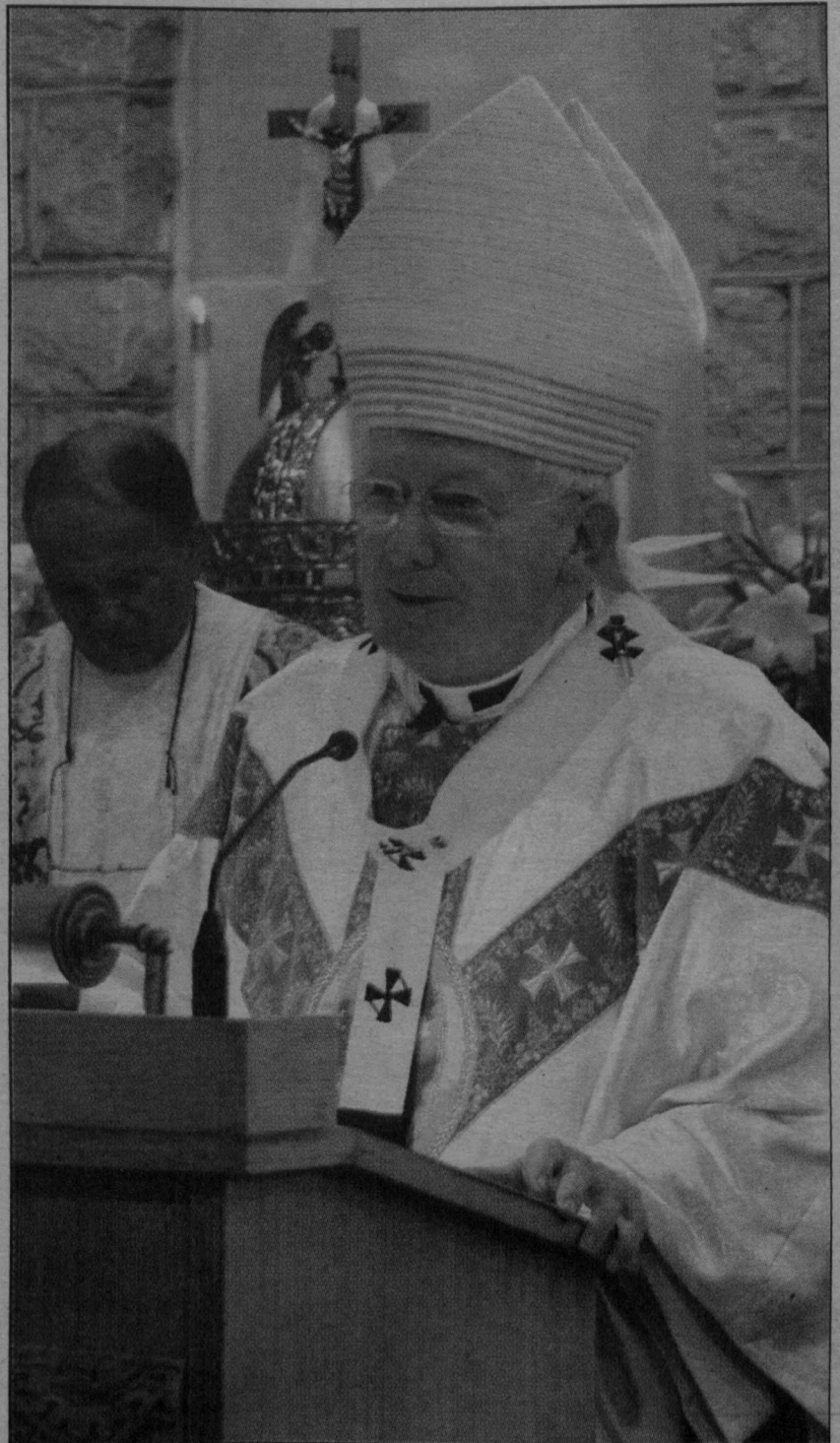
He said, "The Holy Father has reached out to everybody through his preaching, inducting young people and the Jews ... The church must learn to breathe with both the lung of the East and the lung of the West, he said."

John Paul II had consecrated his pontificate to Mary, proclaiming his devotion to her in part through the letter "M" that appeared on his seal.

The Grotto is named for Mary, the mother of Christ. Cardinal Keeler spoke of Mary's faith and urged others to learn from her as John Paul had done.

He said, "Mary, as a woman of faith who followed her son's sufferings, can be a source of hope for us today ... We must learn from Mary's faith, from Mary's piety, from her closeness to her son."

-See Keeler on page 10



-RAYMOND BUCHEISTER / THE EMMITSBURG DISPATCH

Cardinal Keeler reflects on the life of Pope John Paul II during a mass at the National Shrine Grotto of Lourdes this past Saturday afternoon.

### Inside

- Letters to the Editor.....2
- 100 Years Ago.....2
- Editorial.....4
- Town News.....5-8
- Religion.....10
- Retired Ecologist.....12
- The Mount Page.....13
- Obituaries.....14
- Art & Entertainment.....16
- Activities & Programs...17
- Classified Ads.....18
- Looking Ahead.....18

## Election Candidate Forum

Co-sponsored by The League of Women Voters and The Emmitsburg Dispatch

April 14, 2005

Town Office Meeting Room

7:00 p.m. to 9:30 p.m.

At the invitation of *The Emmitsburg Dispatch*, the forum will be run by the Women's League of Voters with its current President Gail Bowerman as moderator.

### Selecting the next Pope

-see page 3

### Lessons learned from the Terri Schiavo case

-see page 4

### No-contest election turns into heated race

-see page 5-6

### Commission President faces third ethics complaint

-see page 8

### New Book on Emmitsburg's Catholic Heritage loses support of local clergy

-see page 10-11

## Attempt to unseat ethics chairman fails, O'Neil threatens court action

**Richard D. L. Fulton**  
News Editor

During the April 4 town meeting, Board President William O'Neil introduced a motion, seconded by Art Elder, to remove Ted Brennan as chairman of the ethics commission. Both O'Neil and Elder have been the subjects of an ethics inquiry since the end of last year.

The motion was defeated by a 2:2 tie, with Commissioner Joyce Rosensteel and Mayor James

E. Hoover voting against the proposal. Commissioner Dianne L. Walbrecker was absent.

At the March 21 meeting the commissioners had voted to require the ethics commission to provide them with procedures and a timeline for completing the investigation at the April 4 town meeting.

Town Manager David Haller told the commissioners he had received only a partial response by the deadline. Clearly frustrated, referring to the commission's

inaction as bordering on insubordination, O'Neil led the attempt to oust Brennan.

Hoover voted against the motion, his first vote with the board since he was elected in 2002. See "A Word from the Mayor, Voting on Town Issues" on p. 7 of this issue.

After his motion was defeated, O'Neil, who does not believe the mayor should be permitted to vote with the commissioners, made his next steps clear: "I only have one other alternative and you're not going to like it. I will seek court action next and I will win."

POSTAL CUSTOMER

Pre Sort Standard  
US Postage Paid  
Emmitsburg, MD  
Permit # 67



## LETTERS TO THE EDITOR

The Emmitsburg Dispatch encourages its readers to express their thoughts and opinions about issues that appear in this publication or affect the community. Letters must be exclusive to the Dispatch and should be no longer than 300 words in length. They must be signed and include the writer's address and phone number to be used for verification. The Emmitsburg Dispatch reserves the right to edit letters for content and space.

# COPE President rebuts Runkle

While I have no desire to engage in a public spitting match with Mr. Runkle, the "facts" he lays out in the March 10 Dispatch beg to be expanded upon or negated altogether.

Mr. Runkle's portrait of the now famous "blockade" is inaccurate. Since I didn't attend the blockade, I have to rely on the accounts of those present, who reveal that aside from Mr. Elder, his wife, and the new owner of the equipment, there were only four other people present, standing on the sidelines not blocking any

entrances or exits. In truth, these people didn't prevent Mr. Runkle from taking the printing equipment - that task was performed by the Sheriff's Department.

As to the demographics of the people present, they were not all COPE members - in fact the percentage of COPE members present was nearly the same percentage as Catholics in attendance. To accuse the pontiff of organizing against Mr. Runkle would be just as ludicrous as accusing COPE. We are a non-profit civic group whose agendas

and minutes are public documents and they support that we have never made Mr. Runkle's business dealings an agenda item.

While Mr. Runkle is quick to note that he wanted Mr. Elder to remove the equipment from the building, he is not forthcoming with the fact that removal and storage of that equipment would cost Mr. Elder several thousand dollars. Nor does he mention that the new owner of the equipment had made arrangements to lease the first floor of the building where the equipment was housed. He also doesn't point out that the equipment sustained several thousand dollars in damages under his ownership.

In closing, I agree with Mr. Runkle on one point - there are innocent victims in this saga. However, I am dubious that he is one of them.

-Sabrina Paxton-Daily  
President of COPE, Inc.

# Benefit helps grandson

We want to thank the people of Emmitsburg and the surrounding area for the success of the Benefit Basket Bingo held for our grandson William's medical needs. Special thanks go to the Emmitsburg Ambulance Company; they were great to work with. Jamie Eyler and Mary Lou Little did an outstanding job of planning and managing the event, and many other members of the company gave up their

afternoon to set up the room, work the bingo and clean up afterward. Many others from the community helped prepare and serve food, or made financial contributions.

This benefit will be an immense help to William and his mother, and it proves again to all of us what a great community we live in.

-Betty Jean and Bill Meredith  
Emmitsburg

## Candidate Forum

April 14, 2005  
Town Office Meeting Room  
7:00 p.m. to 9:30 p.m.

# 100 Years Ago "In this place" From The Emmitsburg Chronicle

This column offers a regular look back at Emmitsburg through the eyes of The Emmitsburg Chronicle which first appeared on June 14, 1879, published by Samuel Motter. In 1909 the paper became known as The Weekly Chronicle. It continued regular publication, allowing for a 5-year hiatus during World War II, until February 9, 1977.

**April 7, 1905** - The first organ grinder of the season appeared in town Monday evening.

**April 7, 1905** - Messrs. J.T. Hays and Sons are building an addition to their shop.

## Harney News

**April 7, 1905** - Mr. and Mrs. Edgar Shriver, of Emmitsburg, visited Mrs. Shriver's parents, Mr. and Mrs. John J. Hess, on Sunday. Mrs. Hess, who has been very ill for sometime, is slowly improving.

Some mischievous villain has made himself so low as to cut the rope and draw it down from the flag recently erected by the P.G.S. of A. over the school building of this place. Whoever it was surely cannot have much love or respect for the beautiful flag of our country.

Mr. Irwin Hess has purchased a new horse, quite a speedy pacer.

Some of the boys of this place and near here seem to occasionally enjoy a slow race on the thoroughfare of Harney on a Sunday evening. Not a very appropriate time, and were it not for the nature of the races the Burgess of our town would most likely take them in.

Little Pauline Shriver, granddaughter of Mr. and Mrs. Geo. I. Shriver, who accompanied her aunt, Miss Aurella Shriver, to Baltimore last week, returned on Monday. She was delighted over the Easter rabbits, bringing a rabbit and basket of eggs with her.

**April 14, 1905** - Potatoes are selling as low as 10 cents a bushel.

**April 14, 1905** - It is reported that 50.3 inches of snow fell during the past winter. This is 12 inches more than we had the previous winter.

## Town Election

**April 14, 1905** - The annual election for a Burgess and six commissioners to manage the affairs of Emmitsburg for one year is drawing near. Candidates should be nominated at a public meeting at least a week or more before the day of the election. Will this be done? The people have a right to know who the candidates are before the morning of election day.

## Fairfield Items

**April 14, 1905** - Fairfield is a nice little town. The streets are all pike and crushed stone have been put on as a top covering, except Centennial Street. It is in very bad shape at this time. Perhaps the council will pike the street, as there is a lot of stone at the crusher at this time. The town council should see that the streets are kept in good condition. The constable cannot make a good report of Centennial Street.

The School Directors have not decided upon a site for the new school house as yet, but it will probably be built on the old site. They have decided to build.

Eggs were selling for 15 cts. per dozen on last Saturday in Fairfield.

Rev. J. F. Mackley has had his house repainted, which is an improvement. Mrs. Mackley has some of the finest flowers in town.

## Thinking of Spring?

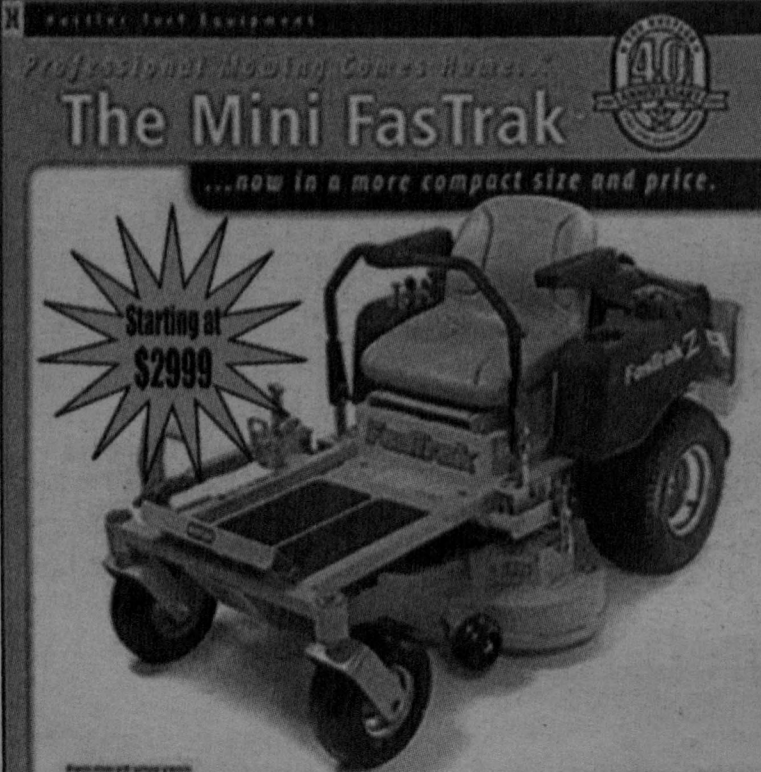
Tired of doing your yard work?  
Let us DO it for you!



## The Rebuilders

—WE DO—  
Lawncare • Mulching  
Landscaping & Design  
patio and walkways

Call Michael McKeel  
**410-775-7295**  
MHIC #85201



Professional Mowing Comes Home...  
**The Mini FasTrak**  
...now in a more compact size and price.

Starting at \$2999

Lighten Manually on the tractor frame and leading edge of deck - welded. • 4. Not stamped! Twin Lever SmoothStart™ starting with patented automatic park brake system. No maintenance between oil changes. Sealed bearings and commercial-quality blade spindles for trouble-free performance. Very high blade-tip speed for awesome quality of cut. 34" or 42" side-discharge/mulching decks.

**TUFF STUFF**

**Harrington's Service Center, Inc.,**  
5825 Conover Rd, Harney, MD 410-756-2506  
Owned and Operated by  
**Richard and Christine Harrington**

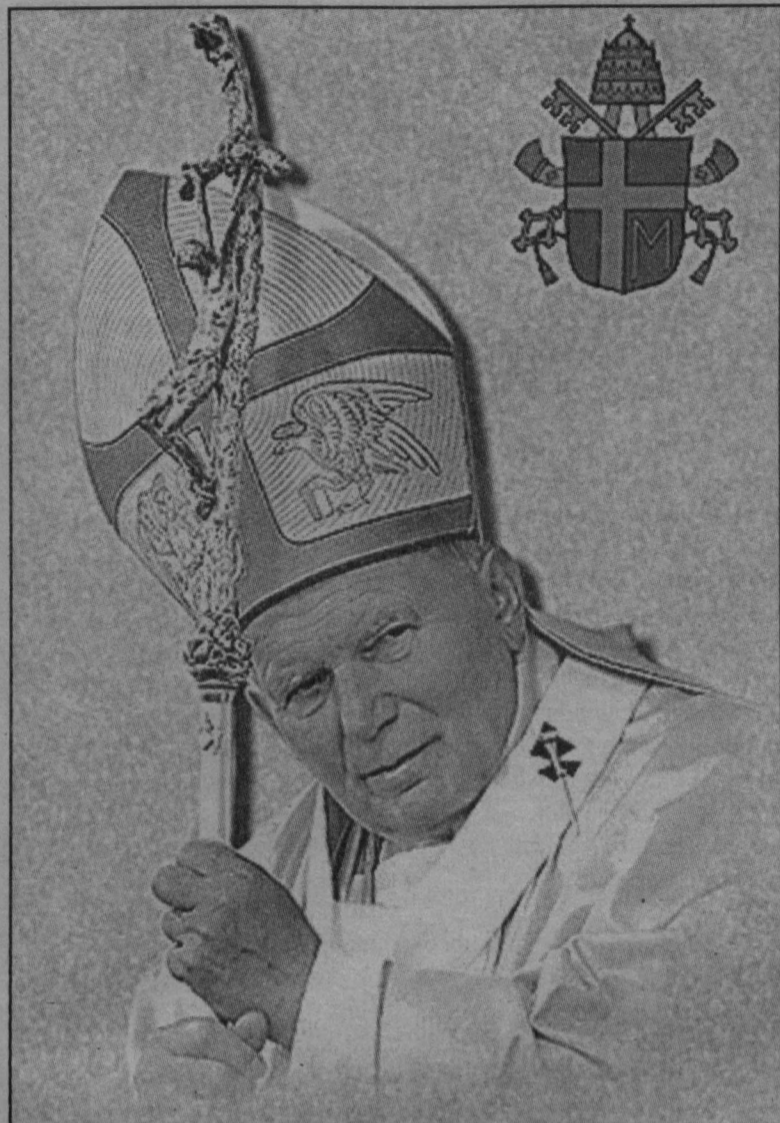
# World's Tallest Building underway in the Mideast

Construction is underway on what is planned to be the world's tallest building: the Dubai Tower, the Burj Dubai, in the United Arab Emirates. With pilings already 160 feet into the ground, developers say that the building, when completed, will be more than 123 stories tall. Robert Booth,

a director at Emaar Properties, the tower's construction firm, says that the \$900 million spire-shaped stainless-steel-skinned tower will be the world's tallest building and the tallest manmade tower. There will be a hotel on the lower 37 floors; floors 45 through contain private apartments, sold in just

eight hours. Corporate offices and suites will fill the remainder of the building, except for a 123rd floor lobby and 124th floor observation deck, with an outdoor terrace. The spire will also hold communication equipment. The tower is scheduled for completion in 2008.





**Pope John Paul II**

On April 2, 2005, at 9:37 p.m. (2:37 EST), Pope John Paul II, the Polish pontiff who led the Roman Catholic Church since 1978, died in his Vatican apartment at age 84.

Born Karol Joseph Wojtyla, son of a Polish foundry worker/military officer, and a former teacher, the Holy Father was the first non-Italian pope in 455 years. He spoke out against communism in his native Poland and throughout the Soviet Union, as well as against consumerism, contraception, abortion, euthanasia, and the death penalty. He was an accomplished author and poet, held two doctoral degrees, was fluent in more than 10 languages, met with world leaders reaching out to people of many faiths, appointed more cardinals than any previous pontiff, and traveled to more foreign countries than any other previous pope.

## Keeler

-Continued from page 1

Both in the press conference and in his words to those at Mass, Cardinal Keeler said he felt that what was most overlooked by the media was the pope's connectedness with youth, the future of the church. He spoke about the Holy Father's August 1993 visit to World Youth Day in Denver, Colo., and reminded the press that it was the Holy Father who started World Youth Day in 1985. The pope inspired young people throughout the world and set a high standard for them to live by. He told them that with God's grace they could live sacramental lives.

Under cover of the Grotto's Glass Chapel, the cardinal celebrated Mass amidst the steady downpour outside. He personally greeted everyone as they left

the church on their way to the reception hosted by Mount St. Mary's University.

Cardinal Keeler, 73, is now in Rome, the first Baltimore archbishop eligible to vote in a conclave to elect a new pope since 1903. Keeler was elevated to the College of Cardinals in 1994, becoming the third cardinal in Baltimore's history, and indeed a potential papal candidate.

The Mass of celebration at the Grotto marked Fr. John DuBois' ascent up "Mary's Mountain" in 1805. Seeing a light, he climbed the hill and laid a cross in a tree where Corpus Christi Chapel now stands, thus beginning the Grotto. Cardinal Keeler's celebration of Mass is the first of a number of celebrations leading up to Mount St. Mary's bicentennial in 2008.

*Editor's Note: Look for an in-depth article on the history of the Grotto in an upcoming issue of The Dispatch.*

# Papal Succession

Joyce Demmitt  
Managing Editor

Upon the death of a pope, a traditional process for choosing a papal successor begins.

First, the Head of the Sacred College of Cardinals, the "Camerlengo," must verify the pope's death by calling his baptismal name three times. Receiving no response, Cardinal Eduardo Martinez Somalo of Spain announced John Paul's death and made arrangements for his Fisherman's ring with the papal seal to be broken.

The Camerlengo prepares for the pope's burial and nine days of mourning. Fifteen to twenty days after the pope's death, the Sacred College of Cardinals meets to elect the new pope from among the cardinals.

Before the cardinals begin the election process, they will have time for informal discussions as they walk through the Vatican grounds and eat meals together. The election process, dating back

to the 13<sup>th</sup> century, is called a conclave, and the cardinals meet in an annex of the Sistine Chapel.

There are currently 183 members of the College of Cardinals, with groups from 65 countries on five continents, including 20 Italians, 11 Americans, 21 Latin Americans, 12 East Europeans, 11 Africans and 11 Asians. John Paul II appointed all but three of the current cardinals.

Cardinals age 80 or older may not vote for the new pope. Only 117 of the 183 may vote.

All of the cardinals will meet daily in sessions known as General Congregations. With no common language, conversations will likely take place in Italian, Spanish and English. Voting is done by secret written ballot, two each morning and afternoon until a new pope is elected. In the past a pope needed two-thirds of the vote plus one to be elected. Pope John Paul II changed the process to allow for a simple majority election if the cardinals are deadlocked after 12 or 13 days.

The ballots are counted and burned after each vote, with a chemical added to create either black or white smoke. Black smoke billowing from the Vatican's Sistine Chapel chimney signals an inconclusive vote; white indicates a new pope has been chosen.

Once the elected cardinal accepts, the Camerlengo steps onto the Vatican balcony and announces, "Habemus papam!" — "We have a Pope!" The new pope then appears and issues a blessing.

### Possible successors

Concerns about church issues along with personal qualities will shape the discussions surrounding the election. The actual discussions will not be made public. Indeed, anyone who divulges information during the process risks excommunication.

Former Vatican diplomat and aide John-Peter Pham, professor at James Madison University and author of the 2004 book, "Heirs of the Fisherman: Behind the Scenes of Papal Death and Succession," suggests the following essential

-See **Successor** on page 10

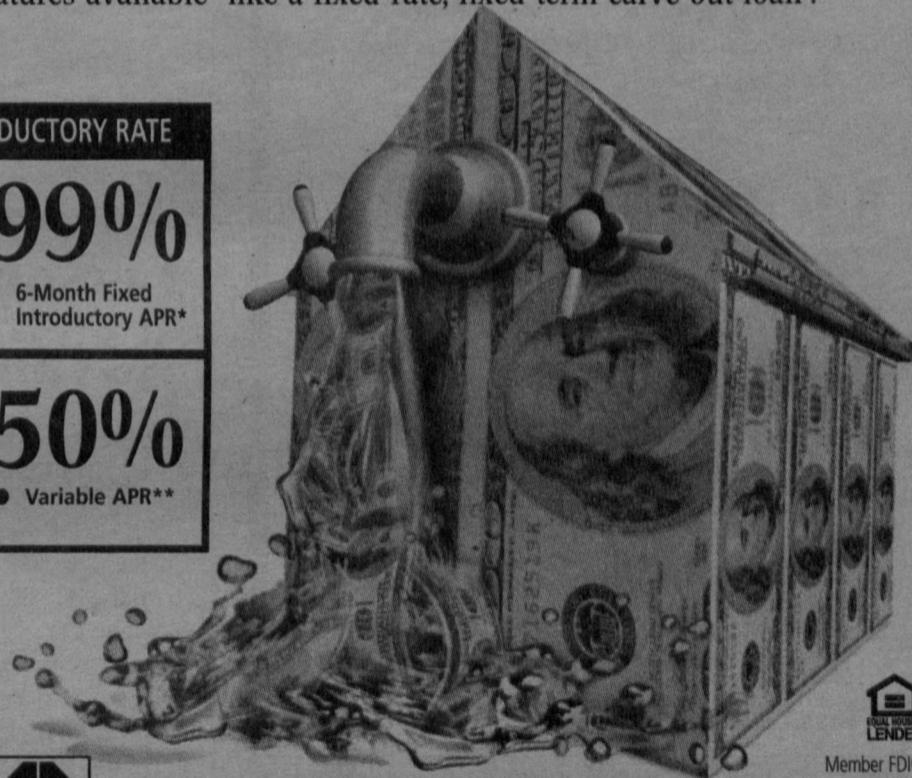
## Tap into the equity in your home and let the cash—flow.

Get our Home Equity Line with a great rate, flexible terms and features available—like a fixed-rate, fixed-term carve out loan<sup>1</sup>.

INTRODUCTORY RATE

**3.99%**  
6-Month Fixed Introductory APR<sup>1</sup>

**5.50%**  
• Variable APR<sup>\*\*</sup>



**FARMERS & MECHANICS BANK**

www.farmersandmechanics.com

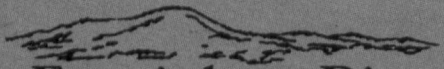
301-694-4000

Twenty-one convenient offices serving the Frederick community since 1817.

A MEMBER OF MERCANTILE BANKSHARES CORPORATION  
A family of Community Banks serving Maryland, Washington, D.C., Virginia, Delaware and Pennsylvania

\* The introductory Annual Percentage Rate for the Home Equity Line of Credit is a fixed 3.99% for six months. The introductory APR is available only for new Farmers & Mechanics home equity line of credit customers on new variable rate lines of at least \$10,000 advanced at closing. After the introductory period, your annual percentage rate is variable and is based on the Bank Prime Loan Rate (BPLR) plus 0.75% for lines up to and including \$24,999; and BPLR plus 0.50% for lines of \$25,000 or more. Current rate is 6.25% and 6.00% respectively; rate will not exceed 24%. \*\* A total rate discount of 0.50% (currently 5.75% and 5.50% respectively) will apply when Custom or Prestige Checking customers ask for their 0.25% relationship discount and select automatic payment for an additional 0.25% rate reduction. Closing costs will be charged if line is closed during the first two years (estimated at \$400-\$2,000). Property insurance is required. Current rates are as of March 1, 2005. Rates are subject to change as Prime changes. Please ask an associate for the current rates. <sup>1</sup>Subject to credit approval.





# The Emmitsburg Dispatch

NEWS AND OPINION IN THE SERVICE OF TRUTH

P.O. Box 358 Emmitsburg, MD 21727  
 TEL 301-447-3039 FAX 717-334-0423  
 www.emmitsburgdispatch.com

Editor & Publisher: Raymond Buchheister  
 Email: publisher@emmitsburgdispatch.com  
 Advertising & Business Manager: Jennifer Buchheister

Managing Editor: Joyce Demmitt  
 Email: editor@emmitsburgdispatch.com  
 News Editor: Richard D. L. Fulton  
 Email: fulton@emmitsburgdispatch.com  
 Sports Editor: A.J. Russo

Advertising & Subscriptions: Lori Stromberg  
 Email: advertising@emmitsburgdispatch.com  
 Advertising Design: Toya Warner  
 Webmaster: Wendy M. Shepherd  
 Email: webmaster@emmitsburgdispatch.com

Staff Writers: Susan Allen  
 Megan Zimmerman  
 Column Writers: Mary Ellen Cummings  
 William Meredith  
 A.J. Russo

Next Publication: April 21, 2005

Neither the publisher nor the editors will be liable for misinformation, misprinting, or typographical errors. The publisher reserves the right to edit any submitted material.

All submissions should be addressed to Editor.  
 Email: editor@emmitsburgdispatch.com



By their generosity these sponsors of  
 The Emmitsburg Dispatch help the local  
 community have its own newspaper.

faith | discovery | leadership | community  
**The MOUNT**  
 Mount St. Mary's University  
 Emmitsburg, Maryland  
 www.msm.edu

**EMMITSBURG**  
 GLASS COMPANY  
 A reflection of quality

**Crouse**  
 Ford

**TANEY**

**Holtzople**  
 Heating & Air Conditioning

**Jubilee**

Installation, Maintenance  
 & Support for:

- Telephone Systems
- Computer Networks
- Intercom & Paging
- Voice Messaging
- Closed-Circuit Video

Voice & Data  
**VoxCom**  
 Solutions

Need more information?  
 info@voxcomsolutions.com

or call  
 Mike Forrence at  
 301-447-3848

www.voxcomsolutions.com

## EDITORIAL

# What we never learned about the Terri Schiavo case

Bill Steo  
*Special to The Dispatch*

If you have not heard of Terri Schiavo, welcome to planet earth. Who does not know of the brain-damaged woman who died last week when her feeding tube was removed (See "Summary of Schiavo life-support dispute" on p. of this issue.) Is there anyone who does not have an opinion about her treatment?

Wait, don't go. You will not read here another snarling judgment that her husband wrongly/rightly ended her life support. No reasonable judgment can be made on what became known through news reports, even all of them together. There are factual questions they never answered, it seems, and ethical principles they never explained.

**Ethical mine field.** Michael Schiavo was Terri's husband and legal guardian. The course for him was an ethical mine field. To avoid a wrong decision, he had to pick his way through thickets of facts and ethical considerations. Here are just three things about the Schiavo case that we did not learn from the media:

1. How did Michael use his freedom? What was his thinking before he had the tube removed? Did he intend that she die? If so, he

acted unethically. Or did he only allow her to die? If so, his action could be ethically justified.

2. How? What ethical principles applied? In the 1500s a moral theologian named Banez taught that we are not obliged to use extraordinary means to keep alive someone who has been reduced to a vegetative state and for whom medicine holds no hope of recovery. His opinion has been taught by Terri's Church for over 400 years. Operating on someone to open a hole in her and using an inserted tube to feed her are extraordinary.

3. But what was fact about Terri? Was she, in fact, living in such a state as court-appointed doctors said? We don't know, partly because it isn't clear that doctors understand the "vegetative" state in an ethically meaningful way. Ethics philosophers say that someone truly in that condition lives literally like a vegetable in that she not only cannot think, but cannot feel, see, hear or be conscious of anything like a normal human being.

There is, however, an intermediate state not mentioned in the media. It is like the life of a very young child who is living neither like a vegetable (which has no sensations) nor with the full

consciousness of a normal adult (who can act with freedom). Was Terri in that intermediate state? And if so, how would that affect the ethics of removing the tube? This critically important fact, it seems, was never made known.

**Sample of complexity.** The paragraphs above offer the merest sampling of the many issues of freedom, ethics, and facts that remain unknown, and prevent a rational ethical judgment by those who know the Schiavo case only through media reports. They illustrate how reasoning proceeds, not in a straight line, but this way and that, continually confronting opposing ideas.

Not enough information? Then why did so much acrimony and turmoil burst out among people who never knew Mrs. Schiavo? Far more important life-and-death issues face humanity. Why have ordinary citizens spoken out so earnestly and publicly about how this one person was treated?

They all seemed to have a definitive answer. They knew they were right even though they could not have enough knowledge to judge. Now, it is not bad simply not to know something, but it is dangerous to think that you know something when you don't. With that kind of thinking, people send the wrong person to the death chamber, step on mines, start wars.

## Lessons learned from the Schiavo case – Advance Medical Directives, Living Wills

Joyce M. Demmitt  
 Managing Editor

One of the central questions in the Terry Schiavo case, asked by those on both sides of the issue regarding life support, was "What would Terry want?" Although both her husband and her parents claimed they knew the answer, there was no written directive from Terry Schiavo herself.

One of our lessons from this case is to be sure to clarify our wishes for those who might find themselves in the position of making health care decisions if we are unable.

A highly recommended tool is the advance medical directive, a document that allows someone else to make health care decisions for you if you cannot effectively communicate with a physician. You legally declare someone

to be your health care agent. That person can make almost any decision you would have made if you were competent to make it: seeking a second opinion, providing consent for or consent to withhold a medical procedure, hiring and firing health care providers, and determining whether or not to use artificial life support equipment during end-of-life situations.

Without an advance medical directive, the law provides a "surrogate decision-making" process. There is a priority list for who will make decisions: spouse first; then adult children; then other friends or family identified in the law. These individuals are to act in your best interest, but may not know your wishes.

An advance medical directive can also include a living will, which spells out your wishes regarding the use of artificial life

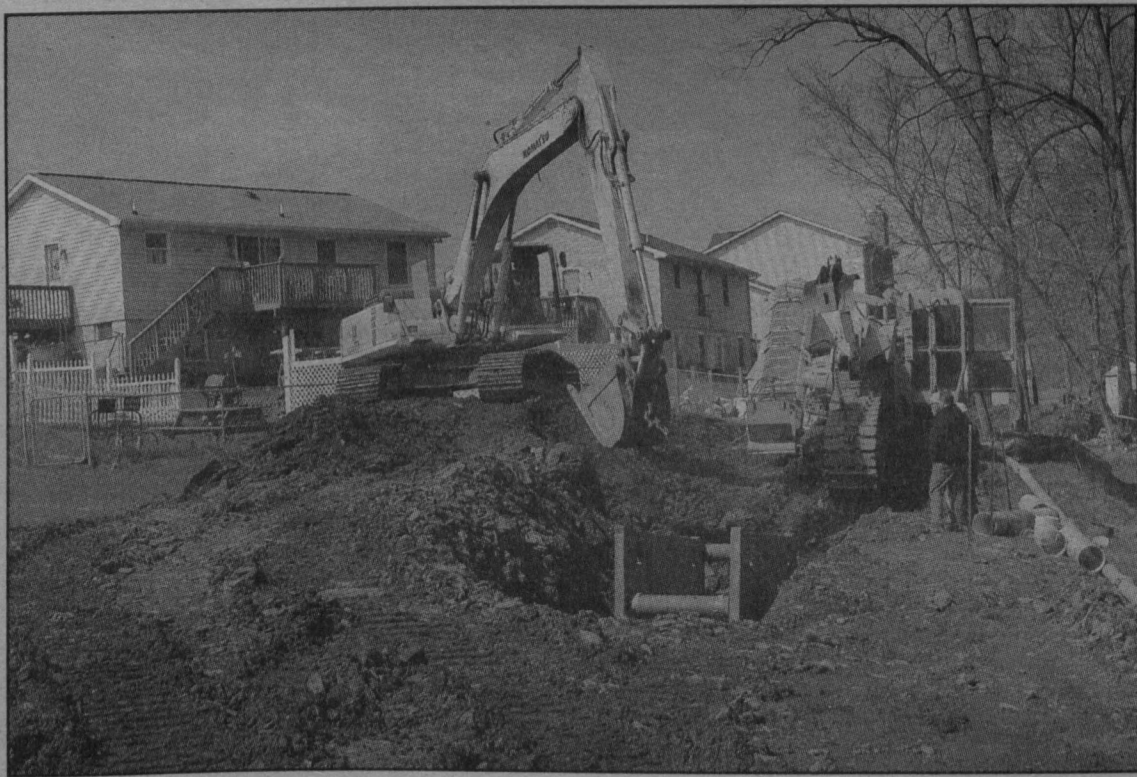
support equipment during end-of-life situations.

Maryland's Health Care Decision Act, effective Oct. 1, 1993, allows a living will or advance medical directive to provide for withdrawal of artificial life-sustaining procedures if you are in a persistent vegetative state, if you have what is called an "end-stage condition," or if you have a terminal condition. Previously, the living will was limited to terminal conditions.

Estate planning attorneys can help. Whatever your preferences, having them in writing will help ease the burden on those faced with making medical decisions on your behalf.

*Editor's Note: Michael W. Davis, Davis, Agnor, Rapaport & Skalney, assisted with this article.*





-RAYMOND BUCHHEISTER / THE EMMITSBURG DISPATCH

### Repairs to Flat Run wastewater collection system begin

W.F. Delauter & Son began digging up old terra cotta pipe along Flat Run behind the homes at the north end of Creekside Dr. last Monday, April 4th. According to town staff the repairs should reduce "a good portion" of storm water overwhelming Emmitsburg's sewage treatment plant. Delauter was awarded the \$834, 932 project at the board of commissioner's agenda meeting last Sept. 22.

## TOWN NEWS

### No-contest election turns into heated race

The April 26 election quickly evolved from a no-contest election for commissioner to a field of six candidates running for two commissioner seats and three candidates running for mayor.

For those who felt that the 2004 town election was one of the most controversial in recent town history, stay tuned. The 2005 election could be the record-breaker in town for election controversy.

Of the entire field of nine candidates, one is the subject of an on-going ethics investigation, one has threatened to take legal action against the town he is proposing to represent over political sign regulations, and a third recently compared

committee members (who would be among those having to report to the candidate if elected) to "West Virginia coal miners."

Write-in candidates too are still a possibility. Town elections allow for write-in votes, but write-in candidates must file by April 19. Votes cast for individuals who have not filed by that time will not be counted. For additional information, contact the town offices at 240-629-6300.

#### Town will elect mayor and two commissioners

Commissioner Joyce Rosensteel's term has expired, and she is running for re-election for the three year and five month term. Commissioner Dianne L. Walbrecker's surprise resignation at the March 21 commission meeting, effective April 28, opens the remaining two years of her term for election. Commissioners' annual salary is \$4,000.

Mayor James E. Hoover's term expires and the next mayoral term of office will be three years and five months, at an annual salary of \$8,000.

### INFINITY GLOBAL TRAVEL, INC.

"Ever dream about a trip to the Caribbean?"



Let us make those dreams come true!

410-756-4450

Toll Free: 1-877-448-5151



Hours: 8:30 a.m. - 6:00 p.m. Mon-Fri  
5151 Allendale Lane, Taneytown, MD 21787  
located in the EVAPCO building

### Albert G. Hobbs Auctioneer/Appraiser

Complete Auction Service - Estate, Farm, Business,  
Personal Property & Real Estate on your premises or ours.



"28 years Professional"

That Sounds Like an Auctioneer"

Call Albert and Book Your Auction Today  
301-241-3124



# Quality Tire Service

We will be closed for a shoulder operation April 13 thru April 23.

We will reopen April 24.

We appreciate your cooperation and patronage.

If you need anything done in that time frame

please contact the Taneytown office at 410-756-4552.

### Bomberger's Pet Sitting Service

Serving Thurmont,  
Emmitsburg & North  
Frederick Since 1998

Now Accepting



Mid-Day Walks Available

301-667-5323

tammystails@aol.com

Tammy Bomberger Owner/Operator  
Call or email your request for more info.

### Robert F. Gauss & Assoc. Professional Land Surveyors

Land Surveying  
Engineering  
Planning



301 447-2222

FAX 301-447-3158

Emmit House, Box 128  
601 W. Main St.  
Emmitsburg, MD 21727



## TOWN NEWS

## Three mayoral candidates

**Richard D. L. Fulton**  
News Editor

Incumbent Mayor James E. Hoover, Arthur "Art" Elder, and Stanley C. Mazaleski have all filed as candidates for mayor as of March 29.

**James Hoover**, 40, has lived in Emmitsburg about 10 years, and was elected mayor in 2002. He served as a town commissioner from 1998 to 2002. From 1996 to 1998, Hoover served as vice president of the town streets and transportation committee, and from 1998 to 2002, was a member of the planning and zoning commission.

Gov. Robert L. Ehrlich, Jr. recently appointed Hoover as deputy director of the MARC (Maryland Rail Commuter Service) train and commuter bus service.

Hoover belongs to Seton Center Advisory Board, Frederick County Affordable Housing Commission, St. John's Lutheran

Church Council, Fallen Firefighters Planning Committee, Social Member Vigilant Hose, CASS (Community Agency School Services) Advisory Board, and the Emmitsburg Lions Club.

**Arthur Elder**, 61, has lived in Emmitsburg for 60 years and has been a town commissioner since 2003. He has also served as a member and chairman of the town water and sewer committee since 2003, and as town treasurer since 2004.

He is the former owner of Chronicle Press, Inc., owns Emmitsburg Car Wash, and is a member of Citizens Organized to Preserve Emmitsburg (COPE) and the Knights of Columbus.

Elder was notified at the end of 2004 that he was the subject of a town ethics commission investigation, which is still ongoing. He may well be one of the first mayoral candidates to run while under ethics scrutiny.

If Elder were elected mayor, the commissioners would, according to the town code, be tasked with appointing a successor on the commission who would serve until the next town election.

**Stanley Mazaleski**, 71, has lived in Emmitsburg for two years and has never served in an elected position with the town. He was defeated in his bid for board of commissioners in 2004.

He is a U.S. Navy veteran and is retired from the federal government, where he worked as a medical research scientist. He is presently a consultant in nutrition and environmental toxicology, and works part-time for the Frederick County Public School System.

He is vice chairman of the Emmitsburg Coalition to Prevent Substance Abuse, belongs to Sigma Xi (National Science and Engineering Society), and is listed in "Who's Who in American Men and Women in Science."

## Six vie for two commissioner seats

**Richard D.L. Fulton**  
News Editor

Incumbent Joyce A. Rosensteel, Glenn E. Blanchard, Harold C. Craig, Jr., Kathryn Forrence Christopher V. Staiger, and Clifford L. Sweeney are all running for the two available seats on the board of commissioners.

**Joyce A. Rosensteel**, 66, has lived in Emmitsburg for 47 years. She was initially elected to the board of commissioners in 2002, and has also served as the board of commissioners liaison to the parks and recreation committee and as liaison to the town board of appeals.

Rosensteel retired from the City of Frederick's Department of Human Resources after 19 years of service and currently works for the City of Frederick Building Department.

She belongs to the American Legion Post 121, auxiliary member of VFW Post 6658, Thurmont Amvets, Ladies of Brute of the Knights of Columbus 1860, and the Solidarity of the Blessed Virgin Mary.

**Glenn Blanchard**, 38, has lived in Emmitsburg for 13 years. He has never served in an elected position with the town. He is a member of the parks and recreation committee, and is also chairman of the water and sewer committee.

He served in the U.S. military

for eight years, both as a hospital corpsman in the Navy Reserve, and as a medic in the Maryland Army National Guard. Blanchard has a B.A. in government and politics and a B.A. in secondary education. He is a psychology teacher at Tuscarora High School in Frederick and is a building representative for the Frederick County Teachers Association.

He is a member of the Sons of the American Legion, Knights of Columbus, and the Emmitsburg Lions Club.

**Harold Craig, Jr.**, 74, has lived in Emmitsburg for 38 years. Craig has never served in an elected position with the town, and was defeated in his bid for town commissioner in 2004.

He is retired as a tax law specialist and attorney advisor for the Internal Revenue Service, where he worked for more than 38 years. He is a U.S. Army veteran of the Korean War.

Craig is vice president of COPE, belongs to the Friends of the Library Emmitsburg Branch, New Forest Society, Emmitsburg Area Historic Society, Washington County Museum of Fine Arts, and is a trustee of the Emmitsburg Presbyterian Church.

Since filing, Craig has challenged the town sign code, claiming that prohibiting election banners violates his constitutional rights. If the town does not permit election banners, Craig has stated,

he would have "no alternative except legal action ..."

**Catherine Forrence**, 40, has lived in Emmitsburg a short time, but grew up in the area. Forrence has never served in an elected position with the town. She has been a member of the streets and transportation committee since 2004.

She describes herself as a stay-at-home mother, and has actively attended board of commissioner meetings and planning commission comprehensive plan workshops.

Forrence, who recently suggested the town ethics commission members were no more qualified to write ethics investigation protocol than "West Virginia coal miners" were qualified to write environmental regulations, is a member of COPE, the Emmitsburg Elementary PTA, and the Frederick Regional Action Network.

**Christopher Staiger**, 37, has lived in Emmitsburg for two and one-half years. He has served as the chairman of the town planning and zoning commission since 2003. He has not served in any elected town position.

He works in purchasing for EVAPCO in Taneytown.

Staiger earned a Bachelor of Arts degree in International Studies from American University and is the acting secretary of the Emmitsburg Lions Club.

## Town News Update ...

## New Election rules goes into effect

Candidates in the upcoming April 26 town election will be governed by the newly adopted election rules ordinance, approved at the April 4 town meeting.

The ordinance formalizes a number of aspects of town elections ranging from the distance candidates must

remain from voting polls to how to resolve tie votes.

Board President William B. O'Neil, Jr. suggested that candidates contact the town clerk for a copy of the new rules.

For additional information, call the town office, 240-629-6300.

## Sprinkler ordinance approved unanimously

The board of commissioners unanimously adopted the mandatory sprinkler ordinance on April 4, requiring that sprinklers be installed in new homes.

Board President William B. O'Neil, Jr. had drafted the ordinance after earlier efforts to

enact a sprinkler ordinance had failed to get through previous town administrations.

The state fire marshal's office has offered to provide the town with sprinkler system installation plan reviews and inspection services.

Ambulance Co. preliminary plan approved  
Water from Sisters' property could complicate plan

The Emmitsburg Ambulance Company received preliminary site plan approval on March 16 from the town planning commission for their new Creamery Road facility.

However, a thermal discharge of water from a boiler outflow pipe onto the site from the adjacent Sisters of Charity property could complicate the ambulance company's proposed storm water management plan.

Lee Miller, GLM Engineering project engineer,

said the ambulance company is working with the Sisters to redirect the discharge.

Planning Commission Chairman Christopher Staiger commented that the town's ability to address the unregulated discharge is limited. He said the issue would probably need to be referred to the county for assessment and potential enforcement action if the ambulance company and the Sisters cannot work out an arrangement.

## Osteopathic partially hampered by easement

The town planning commission granted conditional approval March 16 to a portion of the plan for Dr. Bonita J. Krempel-Portier's new osteopathic center on West Main Street, Emmitsburg.

Work can continue at the

site, while Portier seeks to obtain an easement from an adjacent property owner that is essential for accessing the proposed center. She told the board the plans could be modified if she can't obtain the easement.

Planning commission  
to consider more plan revisions

The Emmitsburg Planning Commission will hold a workshop at 6 p.m., April 25, to consider revisions to the community facilities section of the comprehensive plan which includes emergency services,

parks, library, water and sewer. The workshops, part of the ongoing review of the town's 20-year comprehensive plan, are held in the town office meeting room prior to regular planning commission meetings.

**Clifford Sweeney**, 39, has lived in Emmitsburg his entire life. He was elected to the board of commissioners in 1997, and served until defeated in the 2004 election. He has served as town treasurer, member of the streets and transportation committee, the planning and zoning commission, and is presently a member of the

parks and recreation committee. Sweeney graduated from Catocin High School and works as a construction foreman for W. F. Wilson and Sons.

He belongs to the Emmitsburg Community Chorus, the Knights of Columbus, and the Emmitsburg Little League.



## A Word from the Mayor Voting on Town Issues

As your mayor, I believe the time has arrived for me to enact my right under the town charter (Article III, section 5) to vote on items with the town commissioners.

I have stood by since elected mayor and refrained from enacting my right to vote on town issues because I believed that the former board of commissioners were generally taking the right course of action on town matters.

However, for the past year, I believe that the board of commissioners, sometimes in part, sometime as a whole, has drifted away from the desires of most of the residents of Emmitsburg.

I have sat by and watched as this board has invested an extraordinary amount of time attending to personal agenda items, while the time devoted to discussing town-wide issues receives the lesser amount of attention.

I have also, on several occasions, had to enact my veto power as mayor in order to nullify actions by the commissioners which I felt were questionable

and/or premature. One of my vetoes overturned a decision when two commissioners voted to involve the Frederick County Circuit Court over a decision made by the Emmitsburg Board of Appeals. Town commissioners made no attempt to discuss the decision with the board of appeals prior to voting to involve Frederick County Circuit Court. I ask you, should the Town be seeking legal action against one of its committees without at least discussing the issue first?

Therefore, I believe by exercising my voting rights, I can do a better job of actively channeling the board toward accomplishing matters that would be in the best interest of the town as a whole, while at the same time help direct the commissioners from engaging in endless discussions of what many times appear to be personal issues.

When an issue of interest to a small number of town residents takes up several hours of meeting time, it is time to reevaluate the board's priorities.

I further believe that the board has divided itself into two groups, and with an even number of voting members on the board, stalemated

results by virtue of a tie vote are seemingly growing more frequent.

By enacting my voting right under the charter, my vote adds a fifth voice to the decision-making process, and provides a tie-breaking vote.

This is not the first time a mayor has enacted his voting rights. Several years ago, I asked Mayor Carr to ask our town attorney if the mayor had the authority to vote to split tie votes. The Town attorney informed us that the mayor has the authority to vote on every agenda item.

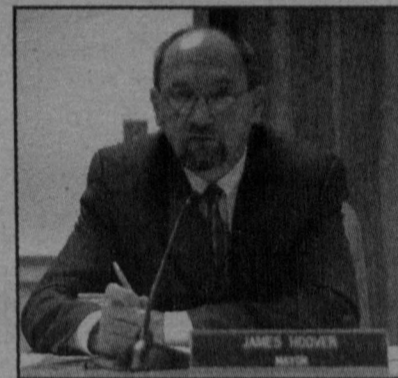
Under the previous board of commissioners, I agreed that since the mayor has veto power, I would refrain from voting, which technically meant I would abstain from every vote. Although I did not always agree with the commissioners' decisions, I agreed with this approach because I felt that board was acting in what they truly felt was in the best interest of the town.

Now, I am concerned that that is no longer the case. I believe my ability to vote and make motions is the best way for me to help ensure that an appropriate amount of time is spent on issues that are in the best interest of our town.

-James E. Hoover  
Mayor of Emmitsburg

Paid Political Advertisement

# Re-Elect Jim Hoover MAYOR



*"A voice of reason in Emmitsburg Town Government"*

The Mayor of Emmitsburg is not a full time position; however, it does take several hours to be an effective leader. Many hours are spent out of town serving as the chief advocate for Emmitsburg's priorities with elected officials at the county, state and federal levels. Many hours are spent working with town staff to establish clear goals and objectives and set priorities which use the town's resources to ensure the town moves forward in a constructive, results-oriented manner.

Being an effective mayor takes more than just being available in an office from 9 to 5. You need someone that is proactive, someone that is willing to listen and voice his concerns, someone with good oral and written skills that can discuss complex issues. You need someone with vision that knows you must plan for the future not just today.

There are many responsibilities in being mayor; it takes a person that is willing to think outside of the box from time to time. A good mayor must be able to multi-task and know how to delegate responsibilities to get the job done.

Please visit my website to learn more about my positions and accomplishments or, contact me directly at 301-447-2140.

[www.hooverje.com](http://www.hooverje.com)

## A Word from a Commissioner Resignation Letter

To the Citizens of Emmitsburg, Mayor, Fellow Commissioners, Town Staff

While I have enjoyed the last year, I have decided that I can no longer serve you adequately as a town commissioner. When I ran for office last year, I traveled occasionally. Since then, my work has changed significantly. Most months, I am out of town for at least one or two weeks. This requires me to miss town meetings, so I am not available to vote for or against important issues facing us. This is not fair to you.

On some months when my work schedule means I can attend both meetings, I am out of town during the intervening weeks. This means I'm

not here to listen to your views and input.

This was an agonizing decision that I made only after careful thought about what would be best for you, the citizens of Emmitsburg. You deserve a full-time commissioner who listens to you and votes in your best interests, as is (and has been) my aim all along. Therefore, I will resign my seat as of April

28. This will allow you to choose someone to replace me during the upcoming election.

As I have done since Willis and I moved here in 1991, I will continue to stay involved in town activities whenever possible. In fact, I would like this Board to consider me for the alternate slot on the Planning and Zoning Commission.

Thank you for allowing me to serve.

-Dianne L. Walbrecker  
Commissioner of Emmitsburg

## Creekside Café

210 N. Church St. • Thurmont, MD  
301-271-3794

*Quaint atmosphere...great food!*

Tues. - Thurs. 11am - 8pm • Friday & Saturday 11am - 9pm  
Open Sunday & Monday for private parties only.  
Non-smoking dining room and carryout available.  
Daily specials and children's menu.

## MELISSA M. WETZEL, CPA, P.C.



*Certified Public Accountant*

Individuals and Businesses  
Tax Returns  
Consulting  
Payroll Services  
Notary

301-447-3797

FAX: 301-447-3798

402 West Main Street, Emmitsburg



# Emmitsburg Commission President faces third ethics complaint

Town board of commissioners President William B. O'Neil, Jr. will be the subject of another ethics complaint, this time because he has refused to recuse himself on Pembroke development issues.

O'Neil lives in Pembroke Woods. He and a handful of other residents are involved in an ongoing skirmish with Buckeye Development over various issues relating to Phase I roads and swales.

At the March 7 town meeting, Attorney Rand B. Weinberg and former board President Patrick Boyle asked O'Neil to recuse himself on Pembroke Woods matters before the town board.

Weinberg interrupted the nearly two-hour discussion of Pembroke issues: "At this point I have to formally request Mr. O'Neil to recuse himself from any further action on this matter."

O'Neil refused, maintaining that Town Attorney John Clapp had indicated that O'Neil's participation in Pembroke issues did not constitute a conflict of interest.

But Clapp said the legal opinion he gave O'Neil "was not (in reference to) the current issue."

Although the Frederick County Planning Commission has recommended that Emmitsburg release Buckeye from Pembroke's letters of credit, O'Neil has

continued to argue against such action.

He has cited concerns that part of Pembroke's storm water management system was completed before the Maryland Department of the Environment adopted different standards in 2000, and maintains that the entire development should meet the new standards.

O'Neil said that he believes Buckeye's complaint is part of a political vendetta.

As one of the founders of Citizens Organized to Preserve Emmitsburg (COPE), O'Neil had argued for the referendum that ultimately overturned Buckeye's previously approved annexation of the Silver Fancy Farm. He had also opposed Buckeye's recent efforts to have the county add a sewage treatment plant that would have allowed the Silver Fancy site to be developed.

Buckeye Development founder Edward Smariga confirmed April 8 that an ethics complaint was signed the week of April 4 and will soon be filed by Buckeye's attorney with the town ethics commission.

## Ethics investigation completed, final report due week of April 11

Emmitsburg ethics commission Attorney Harry deMoll told *The Emmitsburg Dispatch* that the ethics commission's investigation into allegations against two town commissioners has been completed and a final report should be released by the end of the week of April 11.

DeMoll said the report will be presented to the mayor and board of commissioners "by the end of next week (week of April 11)."

Both commission President William B. O'Neil, Jr., and Commissioner Art Elder have been under investigation since late last year for alleged abuse of authority.

DeMoll noted that any additional complaints received could trigger a new round of investigation. Buckeye Development has indicated they will be filing an ethics complaint against O'Neil.

## Ethics expenses approaching \$9,000

The ongoing ethics investigation has cost Emmitsburg taxpayers over \$8,700 in staff time and attorney's fees to date.

According to information obtained from Town Manager David Haller, more than 64 hours of town staff time, both clerical and professional, had been spent on the investigation through Jan. 28, roughly equivalent to \$2,560.

Haller derived the total by multiplying the number of hours by \$40, the average salary rate of staff involved.

Attorney Harry deMoll,

representing the ethics commission, has billed the town for more than \$6,210 in legal fees to date.

The town may also have to pay for legal representation for the commissioners under investigation, Bill O'Neil and Art Elder.

The allegations generally involve what could be characterized as abuse of authority offenses. O'Neil's attorney, Rosemary McDermott, has questioned the legality of the complaints.



## The Ott House

**Luncheon Specials Daily.**  
Weekend Specials: Prime Rib, All-you-can-eat Crab Clusters, plus many other dinner specials

---

**Fabulous Weekend Entertainment!**

April 1-2 Stick Time  
April 8-9 Bloo Stoo  
April 15-16 Over the Edge  
April 22-23 Soul Tower  
April 29-30 Red Line

5 West Main Street, Emmitsburg, MD 301-447-2625

Home Improvement Supplies • Home Improvement Supplies • Home Improvement Supplies

## Zurgable Bros. Hardware

We carry...

- Holland Gas Grills
- Red Wing Shoes
- Cement
- Bruning Paints
- Glass & Screen Repair
- Hardware/Tools
- Garden Supplies
- Lumber
- Sakrete Cement
- Mulch

16663 Old Emmitsburg Road  
Emmitsburg, Maryland 21727  
(301) 447-2020

Home Improvement Supplies • Home Improvement Supplies • Home Improvement Supplies

## Town manager warns about ATV use on town property

Town Manager David Haller stated March 21 that, "No one has permission to drive an ATV (all terrain vehicle) on public property in Emmitsburg."

Haller said that anyone with information about offenders should report it to the town office. Enforcement action will be taken.

He was responding to remarks made by Emmitsburg resident Catherine Forrence who said she saw several people driving ATVs on the Scott Road town property.

# Speak Automotive, Inc.

## SERVICE CENTER COMPLETE AUTO CARE

Tires • Brakes • Repairs/Maintenance  
• Mufflers • Engine & Transmission  
MD State Inspections

**Oil Change Special \$19.95**

**"Do you need service TODAY?!"**  
**301-271-4700**

Conveniently located at the corner of Route 15 North and Roddy Creek Rd Thurmont MD

Looking For A Car?  
[www.speakautomotive.com](http://www.speakautomotive.com)

**DON'T SETTLE FOR LESS GET A...**

**"LITTLE - MOORE"**  
**Tony Little & Jane Moore**  
**301-662-2468 (Direct)**

11.43 ACRES



Gorgeous views all around. Currently this property is set up for horses. 36x108 barn with 14 stalls, wash stall with hot water. 80x190 riding ring. The property has been perked. Build your dream home.  
FR:5179636 \$289,900

OVER 10 ACRES



Big Chalet home on 10.50 acre lot, great for horses. House has approx 3,472 sq ft, with 4 Bedrooms 3 full baths. Some outbuildings.  
FR:5183579 \$425,000

Call the "Little-Moore" Team at 301-662-2468.  
E-mail [littlemoore@littlemoore.com](mailto:littlemoore@littlemoore.com)  
[www.littlemoore.com](http://www.littlemoore.com)  
Real Estate Teams, LLC 301-695-3020 (office)

## ONE MORE TAVERN

135 Chesapeake Ave.  
Emmitsburg, MD

**301-447-6749**

Steamed Shrimp Avail.  
Crabs In Season  
Full Breakfast Menu  
Daily Lunch Specials

**Friday Night Dinner Specials**  
*Broasted Chicken Is Our Specialty!*  
Homemade Soups

Call Ahead For Lunch  
Eat in or Carry out  
"Serving Good Home Cookin"

Party Trays & Catering Available  
Bonnie & Clarence Ohler  
Shirley & Larry Little  
Owners



# Elderly or Disabled Homeowner Property Tax Deferral

On March 29, the Frederick County Commissioners unanimously adopted a real property tax deferral program for county residents who are either disabled or at least 65 years of age, and who have lived in their residence for at least five years.

Effective April 1, 2005, the "Elderly or Disabled Homeowner Tax Deferral" ordinance stipulates that the combined maximum income for all individuals living in a qualifying residence may not exceed \$55,000. Only increases in county real property tax will be deferred. The property tax at the date of election will continue to

be assessed and collected; fire and rescue special district taxes are not deferred.

Deferred taxes will generally be due when the residence is sold or the homeowner dies. The deferred tax payment date can be extended if a qualifying homeowner dies, leaving a spouse who would not

qualify for tax deferral on his or her own. The deferred tax will accrue interest at three percent annually.

Residents must enroll before Sept. 15 of the tax year in order to receive deferral of taxes for that tax year.

For further information, and to apply for the tax deferral, contact the Frederick County Treasurer's Office, 301-694-1111.

## Commissioners donated \$1,000 to little league in support of the league's 50th anniversary



130 S. Seton Ave.  
Emmitsburg, 21727

### Briggs Associates • Real Estate Sales and Appraisals

Call us - we have land for sale... 350+/- acres Contract

Two Farmette - 40 +/- acres stream, and pastures. Offers pending 135 S. Seton Ave. Contract

Coming on market soon: 116 S. Seton Contract

75+/- acres two parcels -- one approved perc Looking for property? Be represented.

120+/- acres - three parcels two approved percs Contact us: Don Briggs, Broker

Phone - 301-447-3110



Fax - 301-447-3022/ E-mail-tepeyac@adelphia.net



### "Wine, Cheese and Networking"

Crossroads Emporium of Taneytown 20 April 2005 from 6pm until 9pm. RSVP by April 18th to 410-756-9235

#### MONEY-SAVING DISCOUNTS

## Save with Nationwide's® Home & Car Discount

Insure both your home and car with Nationwide® and get a money-saving discount on both! Call me .... Stop by ... Log on -- it's your choice!

Serving Maryland & Pennsylvania Call & ask for "Chet the 3rd", ext. 19



**Nationwide**  
Insurance & Financial Services  
Nationwide Is On Your Side®

**Chester T. Zentz, III**  
130 E. Main Street, Thurmont  
1-800-371-2439 or 301-271-2438  
e-mail: zentzc2@nationwide.com



Nationwide Mutual Insurance Company and Affiliated Companies, Home Office: Columbus, OH 43215-0290

## A Platform for Better Government Vote Chris Staiger For Commissioner!

Paid Political Advertisement

Why do residents feel our Town Council and top administrators can be difficult to deal with? In addition to honesty and integrity, Citizens should find easy access to and a timely, reasoned response from our elected and appointed officials. They work for us! I promise to work for a more professional and less bureaucratic Town Council and Town Office. Information is something to be shared - not held back as a source of power and influence!

#### Community Development:

Town Government should support and promote volunteer committees, community service organizations, social groups, and other agencies which provide the organization and direction to key community activities such as after school care or tutoring, activities for youth such as sports, community markets, health screenings, parades, fireworks, etc. Each of these activities builds and maintains the small town environment we desire. Many of these activities are best performed outside of the political arena but should command financial and volunteer support from public servants. The Town must plan and implement goals and objectives designed to foster community growth by providing and maintaining public facilities to meet the needs of the residents - not just overseeing general health, safety, and welfare.

#### Support for Critical Service Providers and Key Institutions:

The Vigilant Hose Company and the Volunteer Ambulance Company provide critical emergency services to the residents of Emmitsburg and surrounding communities. They, along with the National Fire Academy, FEMA, Provincial House, St. Catherine's, Mother Seton School, and Mount Saint Mary's University, are all key participants in the social fabric and economic viability of our community. Town Government must maintain an active dialogue with each of these institutions in an effort to compare objectives and work toward common goals and improvements wherever possible. Simply addressing single issues as they arise is not a recipe for effective teamwork. I would promote organized meetings with these critical services and institutions. This would not be meant to interfere with the independence of any organization, only to provide a forum for partnership and planning.

#### Economic Development:

Emmitsburg is not just a place to drive through. We must revitalize historic areas where businesses once operated as well as plan for and pursue larger opportunities in order to increase local employment opportunities and provide increased revenue for the Town while reducing our reliance on property taxes. I am continually impressed by the large number individuals I've met who have opened a small business in our Town. Our Town government needs to lay the groundwork so that these individuals have every opportunity to succeed. I support clearly defining the requirements to be met while supporting a potential owner's efforts - not simply identifying road blocks. Government needs to promote these efforts not simply collect fees!

I will continue to pursue ways to increase the effectiveness and responsiveness of the local government we pay for. I hope that you agree with enough of my key points to vote for me in the upcoming election on Tuesday, April 26 2005. Please feel free to contact me at [cvstaiger@cs.com](mailto:cvstaiger@cs.com) or 301-447-3757 in order to share your thoughts or discuss opinions.

Respectfully,  
Christopher Staiger

#### Taxes and Fees:

As residents of a municipality, we pay an extra layer of property taxes to our Town Government. I will make sure this money is used to improve services for and the quality of life of our residents, not just increase the size of our Town's bureaucracy! In addition, we are billed numerous fees for services provided by or arranged for by the Town. But how is the money we pay for these services truly used? Do some of my garbage fees really go to support the pool? Taxpayers in our small town should be accurately informed where this money is going. Secrecy is not a good thing when it comes to handling public funds! Our current budget process seems to leave large amounts of money available to be redirected throughout the fiscal year to other unplanned uses. We need to address our final, actual expenses versus our initial projections. If money is left on the table it should be returned to the taxpayers!

#### Residential Development:

Residential development is a benefit for land owners and can provide a windfall of fees for local government. But these should not be the only reasons annexations and site plans are approved. Plans must be in place to provide direction for growth and the Town must be in a position to safely and effectively provide the vital services that draw developers and new residents to our growing community. The challenge is to achieve this without increasing the burdens on or decreasing the quality of life for current residents. All residents must be provided with continuing opportunities to live in our community. Following completion and approval of the Comprehensive Plan Update required by the State, I will work to make sure our ordinances are revised to support the goals of that approved Plan.

#### Infrastructure:

The Town has been working for many years now to improve access to water and repair the sewerage collection system. Finally, we are seeing some of the necessary improvements come on line. Town Government and Staff must still define and publish an Improvement Plan so residents are aware of upcoming projects, estimated costs, and potential sources of revenue. Too often, citizens are left out of the loop. This leads to dissatisfaction at the back end of a project that could have effectively been addressed by all parties at the beginning. The Town must develop and pass an Adequate Public Facilities Ordinance. An APFO must publicly define the standards and conditions necessary for growth so that all parties are aware of the requirements to be met and can plan and negotiate accordingly.

#### Traffic and Parking:

Due to increased local and regional development, there is an ever increasing flow of traffic through Emmitsburg. Due to the layout of the Town, it is difficult to address increased congestion. For many years, the construction of a By-Pass has been discussed. I am an advocate of this goal as a long term solution, but the resources needed to plan, design, and construct a By-Pass are beyond the capabilities of Emmitsburg's government, taxpayers, or any developer. The state and the county will need to be the leaders of this process. The Town must approach these agencies and serve as an advocate for the policy. Meanwhile, Town Government must find creative ways to deal with the increasing traffic pressure by modifying traffic flows and planning alternate routes for local residents. The Town should not give up the parking spots that benefit local residents and business owners just to speed up the traffic for commuters from Pennsylvania. Our Town Square should be the focus of our community - not just a traffic interchange!



## RELIGION

## New Book on Emmitsburg's Catholic Heritage loses support of local clergy and religious

Visionary claims the Blessed Virgin Mary still appears to her

**Raymond Buchheister**  
Editor & Publisher

Believing in the alleged apparitions of the Blessed Virgin Mary to a pharmacist in Emmitsburg, Dr. Paul A. Clarke has written a book about his Catholic faith, St. Elizabeth Ann Seton, and the history of this community where he grew up. Titled "Emmitsburg, Maryland, Its Catholic Heritage and the legacy of St. Elizabeth Ann Seton," the book is a two-year undertaking by Clarke, who currently lives in Thurmont.

Because the last chapter of the 232-page book is about the visions, Clarke's four-member editorial board has disassociated themselves with the book and St. Elizabeth Ann's Daughters of Charity and the local Vincentian priests have also withdrawn their support.

Clarke described the 232-page book as a seemingly impossible task. He wrote it, "to enable the reader to cherish more fully the Catholic heritage which permeates the mountains and valleys of Emmitsburg, Md."

He dedicated the book to the

memory of both his first wife, Delores Ann Martz-Clarke, who died of cancer, and his mother-in-law, Helen Cecilia Eyer-Umbel. He had planned to donate book proceeds in their memory to the Daughters of Charity.

Sr. Mary Clare Hughes, D.C., wrote Clarke on Dec. 2, 2004, "Based on your repeated failure to address the substantive, stylistic and doctrinal concerns of the Editorial Board, I regret to inform you that the Daughters of Charity ... are disassociating themselves from your book in whatever form it may be published." She said the book would not be sold in the Shrine Gift Shop and added, "We do not wish to share in any proceeds from the sale of the book."

According to Clarke, his editorial board recommended that he delete the entire last chapter, "The Center of Mary's Immaculate Heart," because 12 1/2 of the chapter's 17 pages focus on the alleged apparitions of the Blessed Virgin Mary to Gianna Talone-Sullivan.

The apparitions took place during prayer group meetings in St. Joseph's Church in Emmitsburg

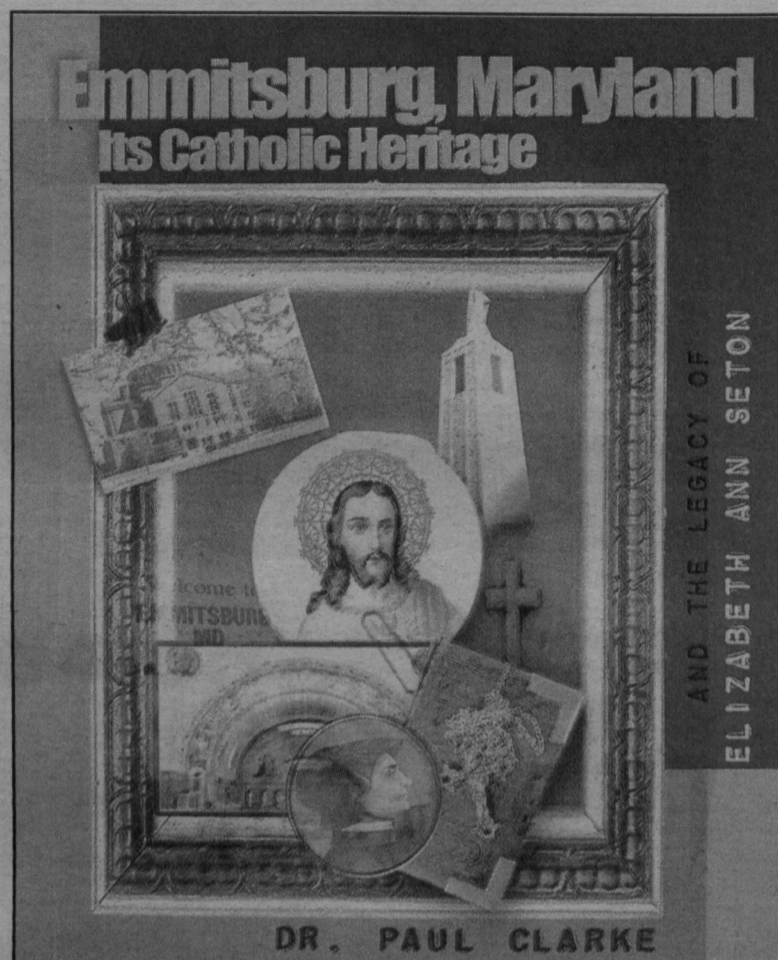
from Nov. 1993 to Sept. 2000 when the Archdiocese of Baltimore halted them. See "Emmitsburg Visions" for more details.

### Local clergy reactions

In a written statement to *The Emmitsburg Dispatch*, Rev. Michael J. Kennedy, C.M., Seton Shrine Chaplain said, "Although complete with many facts and details, it seems to me that the prayerful, faith-filled St. Elizabeth Ann Seton never really comes alive from the pages of the book to the heart and soul of the reader." Fr. Kennedy said these were his personal thoughts and that other priests at St. Joseph's had not read the book.

Fr. Kennedy was a Pastor of St. Joseph's Catholic Church during part of the time when the alleged apparitions took place. During that time he wrote the forward for Volume 6 of the book series, "I am your Jesus of Mercy." Volume 6 includes messages allegedly from the Blessed Virgin Mary to Sullivan from March 1996 until Jan. 1999. About the apparitions he wrote, "In the seven o'clock formal hour of prayer, during the Rosary, Dr. Gianna Talone-Sullivan receives a vision and message from Mary, the mother of Jesus, and I believe it is happening."

*The Emmitsburg Dispatch* confirmed that Fr. Kennedy was one of the members of Clarke's editorial board. In a written statement to the *Dispatch*, Fr. Kennedy said, "In my opinion the spiritual legacy of the saint is not



directly connected to the Thursday night prayer liturgies ..." and, "To me Chapter seven is unduly long and seems to perpetuate that which the Archdiocese of Baltimore called to a halt in September 2000." Fr. Kennedy said he is in full accord with the directives from Baltimore.

### The visions continue

Talone-Sullivan considers herself to be only a messenger and claims that the Blessed Virgin Mary continues to this day to appear to her every day but Fridays. When she receives an alleged public message for the world, it is distributed by e-mail from Ed Koenke and posted on the Internet at [www.ourladyofemmitsburg.com](http://www.ourladyofemmitsburg.com).

Public messages seem to come out on Church feast days, although Sullivan said she doesn't know when she might receive a public message. The last alleged public message was received Sunday, April 3, 2005, the feast of Divine Mercy.

### Questions from shrine visitors prompted the book

Now retired, Clarke volunteers three days a week as a docent at the National Shrine Basilica of St. Elizabeth Ann Seton in Emmitsburg. As he leads tours, visitors to the shrine often ask, "Are you familiar with the visionary?" Wanting his book to provide a complete picture, he included information on the visions. He told *The Emmitsburg Dispatch* in an interview, "The alleged apparitions in Emmitsburg, whether we believe them or not, are a part of the history of the town."

In separate interviews both Clarke and Gianna Talone-Sullivan

confirmed they did not collaborate on Chapter 7.

In August 2004 Clarke sent a copy of the proposed chapter to David Liddle, CEO of Mission of Mercy, a non-profit organization that provides free medical and dental care to the uninsured, under-insured and other needy people. Now in its 11th year, these mobile medical clinics have logged more than 150,000 patient visits and provided more than 250,000 free prescriptions. Talone-Sullivan founded Mission of Mercy in 1994.

Liddle forwarded the draft of Chapter 7 to Talone-Sullivan. Clarke asked for her written comments regarding the accuracy of the content pertaining to the Marian apparitions in Emmitsburg, but never interviewed Sullivan. She told *The Emmitsburg Dispatch*, "It seems to me that Chapter 7 has not changed significantly from the manuscript."

### A participant in the prayer meetings

Clarke and his wife began attending the Thursday night prayer meetings out of curiosity. They came to believe the messages and began praying the daily rosary which Clarke continues to do today. Clarke refers to the Blessed Virgin Mary in her alleged apparitions to Sullivan as "Our Lady of Emmitsburg," a title Sullivan says Mary wants to be known by here.

He told *The Dispatch*, "Thursday night was a spiritual night out for my wife and me. Now I have nowhere to pay her (Our Lady of Emmitsburg) homage."

Characterizing himself as a very fortunate, humble individual, not of his own making but the

-See **Visionary** on page 11



## The Taney Corporation

Manufacturers of Wood Stairs & Stair Parts

Locally owned continuously  
for over 46 Years

5130 Allendale Lane Taneytown, Maryland 21787

Office: 410-756-6671 Fax: 410-756-4103

Visit us at [www.taneystair.com](http://www.taneystair.com)

A sponsor of *The Emmitsburg Dispatch*

## Successor

-Continued from page 3

criteria for the new pontiff: good health, able to travel, intellectual, fluency in multiple languages, pastoral experience. Based on these criteria, Pham suggests five likely candidates: Dionigi Tettamanzi, the archbishop of Milan, the largest Catholic diocese in Europe; Severino Poletto, the archbishop of Turin; Angelo Scola, the patriarch of Venice; Nigerian Cardinal Francis Arinze, head of liturgy and sacraments in Rome; and 60-year-old Christoph Schönborn, an aristocrat, theologian and editor of the Catechism of the Catholic Church.



## The "Emmitsburg Visions"

The apparitions of the Blessed Virgin Mary to Gianna Talone-Sullivan allegedly took place at St. Joseph's Church in Emmitsburg from Nov. 3, 1993 to Sept. 7, 2000.

With the permission of St. Joseph's pastor, two Daughters of Charity had formed a Marian Prayer Group that began Sept. 11, 1991, and was held in the rectory chapel. For more than two years, a small number of individuals met to pray on Wednesday nights.

Gianna Talone-Sullivan claims that the Blessed Virgin Mary first appeared to her in Emmitsburg on Jan. 31, 1993 at the National Shrine Grotto of Lourdes. She and Dr. Michael Sullivan, recently engaged, had come to Emmitsburg on retreat. The apparition allegedly appeared at the crucifixion scene on the hill. Talone-Sullivan said the Blessed Virgin Mary "invited" them to leave their careers and relocate to Emmitsburg to carry on "Our Lord's work" after they were married.

The Sullivans moved to Emmitsburg in Nov. 1993. They were invited to join the Marian prayer group. On Nov. 3, 1993, Talone-Sullivan allegedly received the first Emmitsburg public message at St. Joseph's Parish Rectory Chapel. By December the group had begun meeting on Thursday nights in the parish church to accommodate the growing number of attendees.

The prayer services continued for nearly seven

years, drawing weekly crowds of 600 to 1000 people. The meetings consisted primarily of praying the rosary followed by a celebration of the Eucharist.

Talone-Sullivan claimed to see Mary, the mother of Jesus, or Jesus (a rare occurrence), during the recitation of the rosary. She said the Blessed Virgin Mary gave her messages for humanity which she immediately wrote down. She handed the paper to the presiding priest who reviewed it and read the messages to the congregation.

The Archdiocese of Baltimore brought the prayer group to a halt in Sept. 2000. According to the Archdiocese, the Thursday prayer services "had primarily become a platform for promoting Mrs. Sullivan's alleged apparitions in a setting which suggests Church approval of both their authenticity and theological content."

Previously, the Archdiocese had taken a "neutral" stance. The Archdiocese did not provide a detailed theological analysis of the prayer meetings, but simply stated, "it finds elements in them that cannot be reconciled with the teaching of the Church, including material that deals with predictions for the future and visions of an apocalyptic nature."

On June 11, 2001, at the request of Cardinal William H. Keeler, Archbishop of Baltimore, a commission of three theologians, "Catholic priests experts," in the words of the Archdiocese, was formed to investigate Talone-Sullivan's alleged supernatural experiences.

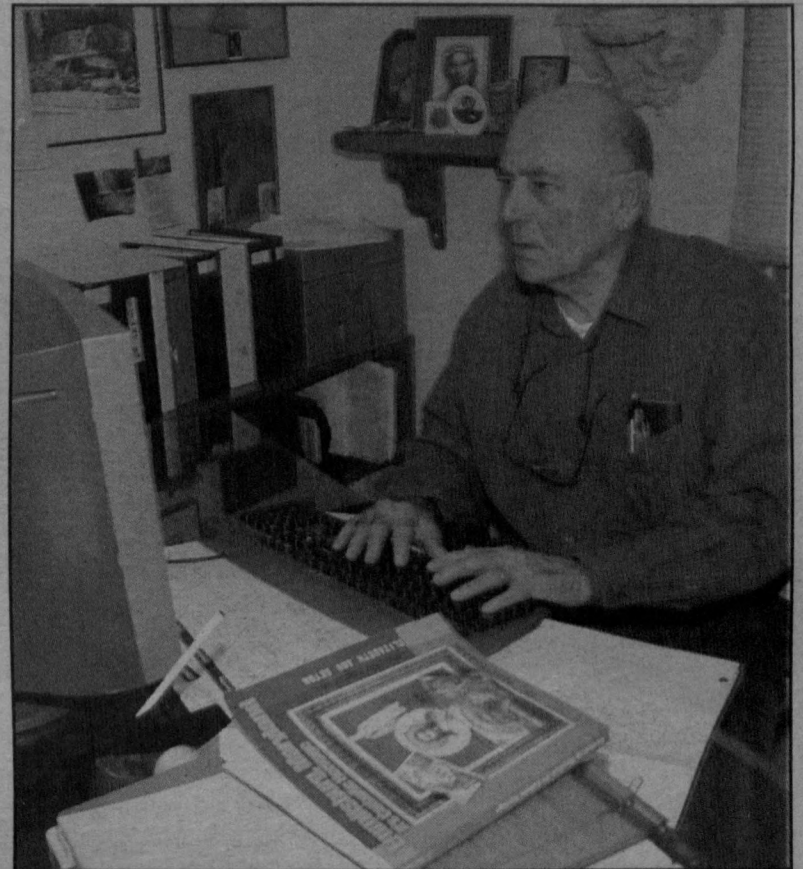
After more than a two-year investigation, Cardinal Keeler

issued a letter confirming, "The prohibition of the Thursday evening prayer meetings at Emmitsburg remains in effect." He said the commission, "unanimously concluded that there is no evidence of supernatural intervention in the Emmitsburg messages," but was concerned, "about some alarming language, in evident conflict with traditional Catholic teaching and the Scriptures from which the teaching flows." He added, "The Commission recognizes the positive benefits associated with the prayer meetings."

Cardinal Keeler did not specifically instruct Talone-Sullivan to refrain from holding prayer meetings or distributing messages for the public, but only forbade her to use church property for these purposes. Sullivan observed the prohibition, remained silent during the commission's investigation, and held no prayer meetings.

Talone-Sullivan considers herself to be only a messenger and claims that the Blessed Virgin Mary continues to this day to appear to her every day but Fridays. When she receives an alleged public message for the world, it is distributed by e-mail from Ed Koenke, and posted on the Internet at [www.ourladyofemmitsburg.com](http://www.ourladyofemmitsburg.com).

Public messages seem to come out on Church feast days, although Sullivan said she doesn't know when she might receive a public message. The last alleged public message was received Sunday, April 3, 2005, the feast of Divine Mercy.



-RAYMOND BUCHHEISTER / THE EMMITSBURG DISPATCH

Paul Clarke, author of a new book, "Emmitsburg, Maryland - It's Catholic Heritage and the Legacy of Elizabeth Ann Seton", works in the study of his home in Thurmont, Md. Behind him on the mantel is a picture of "Our Lady of Emmitsburg," the inspiration for his book.

## Visionary

-Continued from page 10

Almighty's, Clarke said, "For having a doctorate and having lived here all my life I was very dense not really knowing about St. Elizabeth Ann Seton, the most important citizen who ever resided in the town of Emmitsburg."

He considers himself an introvert. "I don't wear my Catholic faith on my sleeve." But he said, "I believe in the proclamation that Emmitsburg is the Center of Mary's Immaculate Heart ... This is a Catholic town."

According to Clarke, "The Archdiocese of Baltimore doesn't want this (the alleged apparitions to Sullivan and the re-establishment of a Marian prayer group) revisited but this (including Chapter 7, having discussions, meeting in a group to pray, sharing the messages, and informing visitors) is the only way there is going to be any kind of movement concerning the thesis that has been made that this area is sacred and is the center of Mary's Immaculate Heart."

He said, "I do not see Emmitsburg as a Catholic community embracing the messages." Clarke asks, "Who is going to take the leadership role to bring Our Lady's request to its fruition?" He questions if there should be a National Shrine to the Immaculate Heart of Mary in Emmitsburg.

When *The Emmitsburg Dispatch* posed Clarke's question to Talone-Sullivan, she responded, "Our Lady has never told me she wanted or asked me to pursue the 'building' of a new Marian shrine here in Emmitsburg. She has

frequently referred to Emmitsburg as the 'Center of her Immaculate Heart,' a title and role unique in salvation history and God's plan. As such, it is already a Marian shrine with a long Catholic heritage, although yet to be recognized and acknowledged by the Church, the nation, and the world in the way it is to be in the future. If there is any further shrine, she would hope to see in the Emmitsburg area, it would be a Perpetual Adoration Chapel to her Son, located in such an area as the Mount St. Mary's campus or the Mother Seton Basilica, so as to be a unifying force for all Catholic entities in the Emmitsburg area."

Clarke worked for 20 years as a professor of human growth and development in higher education institutions in New York, Pennsylvania, and West Virginia. He received his undergraduate degree in secondary education at Mount St. Mary's College (now University). While serving with the U.S. Air Force, he completed requirements for his M.Ed. in counseling and administration at the University of Maryland. He received his D.Ed. at The Institute for Child Study, University of Maryland, College Park. Clarke has published several other books and pamphlets.

"Emmitsburg, Maryland, Its Catholic Heritage and the legacy of St. Elizabeth Ann Seton." is available at St. Peter's Book Store, Silo Hill Shopping Center, Emmitsburg, O'Leary's Emporium Book Store at the National Fire Academy, and Shirley's Books & Gifts, Taneytown, Md.

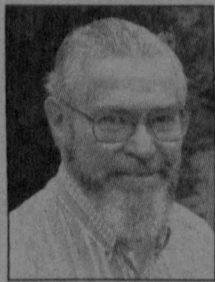
On June 16 at 7 p.m. Clarke will speak at the Emmitsburg Branch Library and sign copies of his book.



-RAYMOND BUCHHEISTER / THE EMMITSBURG DISPATCH

In a barn with more than 50 people on two floors, Gianna Talone-Sullivan vocalizes an alleged message from the Blessed Virgin Mary during an alleged apparition at a prayer group meeting on Sunday, April 3. Allegedly the Blessed Virgin Mary ended the message saying, "I take all your intentions and petitions to the Throne of God the Father, where my most beloved Pope now rejoices in the Sacred Heart of my Son." Many of those present were former attendees of the prayer group at St. Joseph's on Thursday night. This group, which is open to anyone, will meet next on the feast of Pentecost, May 15. The prayer meeting is usually held in an open field.



*The (retired) Ecologist***The Food Chain through the Kitchen Window****Bill Meredith***Dispatch Writer*

"It's a jungle out there." ... Randy Newman, theme for "Monk," USA TV Network

A couple of years ago a local store had a sale on garden statues, and my wife, who never does things halfway, bought five of them. They are in the form of fairies, about two feet tall (including wings), with faces rather like the Irish girl who was the lead dancer in the "Riverdance" program. One of them spent the winter standing outside our front porch. She is dressed in a gossamer gown that is not well suited for the cold, but she didn't seem to mind; she smiled dreamily at the bird feeder across the frozen lawn, and took whatever happened in stride.

One morning last month as I staggered in pajamas and robe from the bedroom toward the

aroma of coffee in the kitchen, I chanced to look through the window at the porch fairy. She was not alone; perched on her head was a male sharp-shinned hawk. He was only a bit larger than a blue jay; from the distance of 10 feet or so, I could see the delicate red bars across his breast and the white edges of feathers in the brownish gray of his back. He looked too dainty to be a predator; his legs were as thin as yellow wires. But the hooked beak and needle-sharp talons on his toes clearly showed what he was designed for. He feeds almost exclusively on small birds, and the look of aggravation on his face showed that he had just made a pass at a sparrow on the feeder and missed.

We keep several bird feeders situated where they are visible from the kitchen window. During breakfast I regularly see about 18 species of birds; ten additional ones have visited occasionally this winter. Each species is unique in its feeding habits. Most of them are primarily seed eaters; various sparrows, finches and cardinals perch on the feeders and spill more seeds than they eat onto the ground, where mourning doves, juncos

and blue jays stand waiting. Insect eaters include two kinds of woodpeckers and Carolina wrens; they concentrate on the suet container. Nuthatches, titmice and chickadees, normally insect-eaters, share the suet, but they also carry sunflower seeds from the feeders to a nearby tree. Unlike the finches, their beaks are not strong enough to crack the seeds open, so they have to peck at them until they break.

We have such a variety of birds because there is cover available for them to hide in. Junipers, boxwoods and yews line the front of the house, and the smaller birds dive into them when danger threatens. We can tell what the danger is from their reaction. When cars, people or dogs come by on the street, the birds fly off nonchalantly, and quickly come back. Passing cats cause them to fly up into the trees and scold from relative safety. But an approaching hawk causes the purest imaginable form of panic; they dive headlong into the nearest juniper or boxwood and stay there.

The panic is well justified. In addition to the "sharpie" that perched on the fairy's head, two others are in the area. One, the kestrel or sparrow hawk, is about the same size as the sharpie; it is actually a falcon, a very fast flier, and feeds on mice as much as small birds. The other is the Cooper's hawk; it is a larger cousin of the sharpie, and nearly identical in color, but as large as a crow. It is a powerful predator, and prefers birds up to the size of pigeons, but will eat smaller ones also.

It is fairly common to see one of the hawks zooming across the yard, but I have only seen them catch their prey twice. One was a sharp-shin that flew into a flock of English sparrows and hit one of them in the air; there was an explosion of feathers, and the hawk flew off with the sparrow in its talons. The other was one morning when I was sitting at the table without my glasses on, and noticed what looked like a blue and orange rag on the ground under the feeder. When I got my glasses adjusted, the "rag" turned into a male kestrel; he had just struck a sparrow, and had spread his wings and tail over it to prevent its escape until he was sure it was dead. The act was over in seconds, and he flew off with his breakfast in one claw.

As Monk's theme song says, it's a jungle out there. But nature is neither "red in tooth and claw," as Kipling claimed, nor are jungles the peaceful Edens that Rousseau described. Nature is impartial. The hawks have to eat, and at least they are efficient about it; they do not play with their victims as cats do. And the birds that eat seeds in winter are predators too; they will feed on insects when nesting season comes. In fact, the stability of entire ecosystems depends on the food chain working effectively; predators are one of the main forces that keep populations of other animals from growing too fast and destroying their environment.

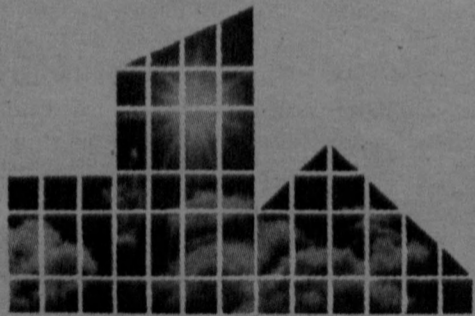
Winter weather does more damage to small birds than predators do. After nights with sleet or freezing rain, I often see small birds hopping about on one foot, the other damaged or broken by ice. Some of them recover; several years ago, a one-legged junco hung around my feeder for the whole winter.

But most of them do not fare so well. Birds around a feeder are competitive, and the competition is most severe against their own kind because they are after the same sort of food. Watch them, and you will see that each individual maintains a characteristic space around itself, attacking others if they get too close; and this defended space is larger for birds of the same species than for others. Injured individuals get no mercy; they are driven away from the best food sources, and have to make do with leftovers or starve.

Occasionally predators such as hawks will catch healthy individuals, but the majority of their prey are old, sick or injured. When hawks attack, failure is the rule; they probably miss as much as 90 percent of the time. I often see hawks perched on a tree or utility wire, watching a flock of small birds; they are trying to improve the odds, looking for individuals that are not as vigorous or alert as the rest. The idea of "survival of the fittest" (which was originally coined by Herbert Spencer, not Charles Darwin) is stated more properly as "the elimination of the least fit."

Knowing all this, the porch fairy calmly allows the hawk to sit on her head, and I make no effort to chase him away. The feeder is there to attract birds for us to see, and the hawk is as much to be admired and enjoyed as the sparrows, finches and cardinals; he is an essential part of the natural scene. In fact, I envy the fairy's acceptance of all things as they are. Last summer she fell over and broke the tip off of one wing, and before I got around to gluing it back, a nest of yellow jackets had moved into it ... but that's another story.

A sponsor of *The Emmitsburg Dispatch*



**EMMITSBURG**  
GLASS COMPANY  
A reflection of quality

Congratulations Emmitsburg Baseball on 50 Years.

**Go Dodgers!**

Emmitsburg Glass Co. will take care of all your residential glass needs including insulated glass replacement, storm door glass, glass table tops, custom mirrors and pattern glass - round, oval, and special designs.

Emmitsburg Glass Co., a major commercial glazing contractor in the Baltimore-Washington metropolitan area, is not too big to serve the needs of Emmitsburg citizens.

PO. Box 346/2 Creamery Way  
Emmitsburg, Maryland

301-447-2245/ Fax: 301-447-2316

Learning starts here at:

**Emmitsburg Early Learning Center**

**VALUABLE COUPON!**

\*Accept Ages 18 months-12 years

\*Hours Of Operation 5:45 am to 6:00 pm

\*Nursery School & Preschool Programs

\*Full and Part-Time Care

\* Before & After School Care With Transportation To:

Mother Seton, Emmitsburg Elementary, Fairfield Elementary & Middle

\* Nutritious Breakfast, Lunch and Snack

\*Educational Activities for all ages

Sliding Scale Based on Family Income

Stop By Today At: 16840 S. Seton Ave. or Call 301-447-6100

Present This Coupon and Receive Your First Week Free!

Proud To Be A United Way Agency (Great Value \* New Enrollment)

**CLIP 'N SAVE!**



# MOUNT ST. MARY'S UNIVERSITY

## SENIOR *Honors* PRESENTATIONS

All presentations are free and open to the public. All are held in the Bradley Conference Room in Bradley Hall unless otherwise noted (\*).

MONDAY, APRIL 18, 2005

Noon Dale Rader

Death of the Student Newspaper?

Carl Glover, Ph.D., Rhetoric and Communications  
Professor Sheldon Shealer, Rhetoric and Communications,  
Mountain Echo Advisor

An examination of the often turbulent relationship between student-run campus newspapers and college administrations. This project involves the organization and execution of a workshop held at Mount St. Mary's University on March 19, which brought together student journalists, advisors, and college administrators from local schools to discuss problems involving campus newspapers and administrations.

3 p.m. Jay Phillips

Informed Assent: Faith, Reason, and the Role of a Theologian

David McCarthy, Ph.D., Theology

I hope to illustrate the relationship between faith and reason, particularly as this relationship bears upon the contemporary Catholic university, theology department, and theology professor. I deal with modern criticisms of faith and I tap into the recent conversation centered on the papal encyclical *Fides et Ratio* (1998), but depend heavily upon John Henry Newman's *An Essay in Aid of a Grammar of Assent* (1870). I will set my discussions along side recent discussions of the role of the Catholic university and the theologian.

6:30 p.m. Adam Windsor  
\* HELD IN UPPER FLYNN HALL

Beyond "Hello, My Baby": an in-depth look at the history and practice of barbershop harmony

Andrew Rosenfeld, Ph.D., Visual and Performing Arts

Everyone knows Barbershop harmony through "The Music Man" or the singing "Dapper Dans of Disney." What people do not realize is that this particular type of music has a complex history, much of which is still unknown. This lecture-recital featuring the barbershop quartet 4given will not only take a retrospective look at the history of Barbershop Harmony and the Barbershop Harmony Foundation, but will also demonstrate modern techniques of barbershop harmony through arrangements of sacred music, both by professional arrangers and by Adam Windsor himself.

TUESDAY, APRIL 19, 2005

Noon Paul Ascosi

American Foreign Policy: Analyzing the Political and Economic Factors That Most Affect Illegal Immigration Across the U.S. - Mexican Border.

Emilio Rodriguez, Ph.D., Political Science

I will argue that the utilization of a stronger and more focused U.S. foreign, political and economic policy will be far more effective in lowering rates of illegal immigration across the U.S.-Mexican border than our currently failing solutions. What I hope to demonstrate are some of the flaws in our current policies towards illegal immigration in the hopes of creating a more effective model in dealing with this issue.

6:30 p.m. Julie Martin  
\* HELD IN UPPER FLYNN HALL

Instrumental Music Education: a Composite of Leadership and Performance

Professor Barry Long, Visual and Performing Arts

An exploration of the ways that musical leadership and musical performance are used to form and direct a musical ensemble. The discussion is based around the changing significance of the flute throughout history in the form of musical pieces and ensembles. Performances by solo flute, accompanied flute, flute quartet, and flute choir.

WEDNESDAY, APRIL 20, 2005

Noon Noel Jopson

In Whom We Live and Move and Have our Being": From Metaphysics to Mysticism

William Collinge, Ph.D., Theology

John Donovan, Ph.D., Philosophy

In What is Metaphysics, the philosopher Martin Heidegger says the basic question of metaphysics is "why are there beings at all, and why not rather nothing?" Why do we exist? Metaphysics leads us to the question, while the Christian faith says our purpose is to glorify God in everything we do. Contemplative prayer seeks to find union with God at the core of our being. As we proceed deeper into communion with Him, God infiltrates every aspect of our being.

3 p.m. Priscilla Wysong

The Most Dangerous Prey: A Short Story

Peter Dorsey, Ph.D., English

An original, fictional narrative which illustrates the reservations and misunderstandings that exist between two college students who share a romantic attraction. This project will feature readings of passages from the piece. The presentation will also highlight various approaches to the short story, as procured from such authors as Edgar Allen Poe, John Gardner and E.M. Forster.

THURSDAY, APRIL 21, 2005

Noon Robert Leib

A Defense of John Hick's Religious Pluralism as Articulated in Kant and Exemplified by Gandhi

John Donovan, Ph.D., Philosophy

My project as a whole looks at John Hick's philosophy of religious pluralism, a theory that regards each of the major religious traditions as equally valid paths to salvation/liberation. This presentation focuses on Kant's notion of symbolic cognition, which is implied therein. Kant believes that, though we cannot have direct empirical knowledge of the Ultimate itself, we can have knowledge of how it affects us, and we can only think and express our relation to it through symbol and analogy.

Check the next *Emmitsburg Dispatch* for the rest of the honors presentations, held through May 6.

## IT'S TIME FOR *Spring Sports!*

Baseball, Softball, Men's & Women's Lacrosse, Men's & Women's Tennis

With spring here, it seems like there is a home game at the Mount almost everyday. Visit the Athletics web page at [www.mountathletics.com](http://www.mountathletics.com) for the up-to-date schedule.

## MOUNT CALENDAR OF EVENTS

Callings: What does it mean to be called by God?

Thursday April 7-9

For more info call 301-447-5772 or visit [www.msmary.edu/callings](http://www.msmary.edu/callings)

Christianity with an Asian Face by Rev. Dr. Peter Phan

Monday, April 11, Laughlin Auditorium, 7:30 p.m.

Peter Phan, a Vietnamese-American priest and Professor of Catholic Social Thought at Georgetown University, will explore the kingdom of God, Christ and the Roman Catholic Church from the perspective of cultures conditioned by Buddhism, Taoism and Confucianism. He will also show that Asia is the birthplace of all world religions, including Christianity.

"Don't Kill in Our Names"

Tuesday, April 12, Knott Auditorium, 7 p.m.

Rachel King will discuss her work with families of murder victims who seek reconciliation rather than revenge.

Senior Student Art Show

Thursday, April 14, Memorial Gallery, 6:30 p.m.

"Reconciliation not Revenge"

Thursday, April 14, Knott Auditorium, 7 p.m.

Marietta Jaeger and Vicki Shieber, members of Families for Reconciliation will speak of their personal journeys to forgiveness and reconciliation.

Why Get Married in a Fragmented World

Thursday, April 14, Knott Auditorium, 7:30 p.m.

Julie Hanlon Rubio, assistant professor of Christian ethics at St. Louis University, will discuss the vocation of forming a Christian family today and look at how the Catholic tradition offers ways of seeing the potential and reality of marriage.

Summer's the best time to dive into teaching...  
...WITH THE MOUNT'S GRADUATE EDUCATION PROGRAMS

For current teachers:

- Master of Education degree with concentration in elementary education, instructional technology or reading. Reading concentration includes advanced state certification with an emphasis on teaching English Language Learners

- Post-master's certification as a reading specialist

Or initial certification:

- Master of Arts in Teaching degree in elementary, secondary, special, art or (new in 2004) music education

- Bachelor's degree completion program also available

Convenient, flexible graduate programs at Mount St. Mary's campuses in Frederick and Emmitsburg, Md.

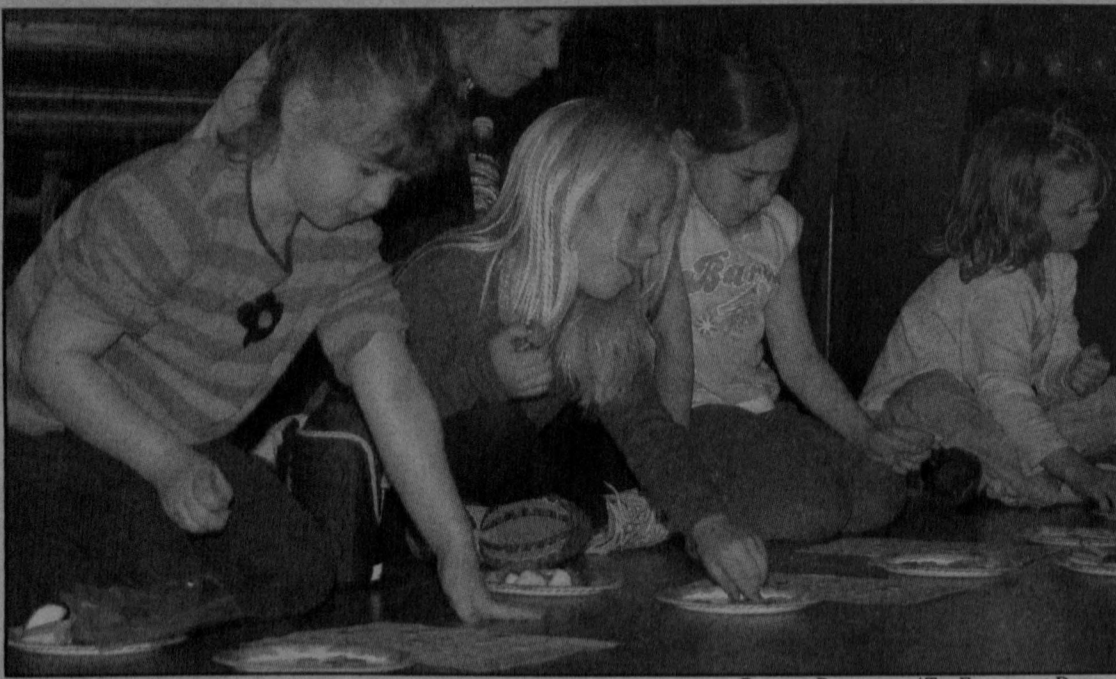


Make a splash.

Register by April 30 for summer classes. 301-447-5371 | [www.msmary.edu/med](http://www.msmary.edu/med)

**The MOUNT**  
Mount St. Mary's University  
Emmitsburg, Maryland





-RAYMOND BUCHHEISTER / THE EMMITSBURG DISPATCH

### Girl Scout Health and Fitness event at Mount St. Mary's

The Maize Meadow Cadet/Senior Girl Scout Troop 1286 from Walkersville/Woodsboro hosted an event promoting physical fitness, nutrition and team sports on Apr. 2 at Mount St. Mary's University on Saturday, Apr. 4. Seven local Brownie troops attended, including Emmitsburg Brownie Troop 1079. The scouts earned a "Girls Sports" Try it badge, by rotating through six different stations, including soccer drills, badminton, and bowling. The Cadet Senior Troop of 7th, 8th, 9th, and 10th graders organized the event as a service project to help earn the Leadership Interest Project Badge.

## THE ROSENSTEEL STUDIO

WWW.ROSENSTEELSTUDIO.COM



SINCE 1986

HIGH SCHOOL SENIOR PORTRAITS CAN BE FUN IN OUR OUTDOOR STUDIO

NEW THIS YEAR AVAILABLE GREAT LOW PRICE PACKAGE STARTING AT \$125.00

We Guarantee You 35 Proof Images When You Show Us This AD

301-447-6272

## Great Food And Friday Karaoke

Make any day a special day. Bring your family, friends or that special someone to Ventura's in Fairfield for a delicious lunch or dinner. Enjoy one of our great daily specials or order from our fine menu. Thursday is our famous Chicken Wing Night, "the best in the area", 13 flavors to choose from. Good Times always start here.

### Friday Night Is Karaoke Night In The Lounge

Every Friday Night bring your friends and join us for Karaoke. Come enjoy your favorite beverage. There's always something happening in Ventura's Lounge.

PRESENT THIS COUPON FOR

**10% OFF TWO ENTREES**

Good Any Day Of The Week In Our Restaurant Or The Lounge.

Expires 12/05

ED

**Ventura's RESTAURANT**

100 East Main St. Fairfield, PA 717-642-8202  
www.venturasllc.com

## OBITUARIES

### Mrs. Alma Jones

Alma Dorothy Shipley Jones, 98, Emmitsburg, died March 31, 2005, at Carroll Hospital Center, Westminster, Md.

Born Sept. 25, 1906, in Baltimore, Md., she was a daughter of the late Howard Frederick and Emma Kate Guyman Shipley.

She taught high school in Emmitsburg from 1949-1968, was a librarian in Sabillasville and at Mount St. Mary's College, and was the last charter member of the Frederick County Homemakers Club.

Surviving are two sons, Dr. Richard Arvin Jones and Dr. Euclid Howard Jones, one daughter, Shirley Mae Long; 12 grandchildren; two sisters, Virginia Minnick and Jessie Eckenrode; and 25 great-grandchildren.

Funeral services were held April 2 at the Church of the Brethren, Rocky Ridge, Md., with her pastor, the Rev. Donald Stine, officiating. Interment was in the church cemetery.

### Mrs. Thelma Richardson

Thelma S. Richardson, 59, Main St., Emmitsburg, died March 24, 2005.

Born Jan. 9, 1946, in Takoma Park, Md., she was the daughter of the late Julius G. and Joyce Kirkland Smith.

Mrs. Richardson actively served her community and church throughout her life. In recent years, she was a member of the Emmitsburg Lions Club and owned the Printed Page, Inc. Printing Company.

Surviving are her daughter, Kimberley R. Daitch, her son, Samuel J. Richardson III; four grandchildren; and two sisters, Patricia Rose and Gerry Wilhelm.

Funeral services were held March 27 at Stauffer Funeral Home, Walkersville, with the Rev. Ben Jones officiating. Interment

was in Emmitsburg Memorial Cemetery.

### Mrs. Dorothy Wills

Dorothy Wills, 69, died March 30 at Frederick Memorial Hospital. She was the wife of the late John W. Wills.

Born on Oct. 13, 1935, she was the daughter of the late John R. Sr. and Mary L. Ridenour.

Mrs. Wills worked at Mount St. Mary's College for over 20 years and lived for the last three years at Glade Valley Nursing Center.

Surviving are two daughters, Bernadette R. Carpenter and Diane Marie Shockey; three grandchildren; two sisters, Gertrude Powell and Betty Sweeney; one brother, John Ross Ridenour, Jr.; and four great-grandchildren.

A memorial service was held April 3 at Stauffer Funeral Home, Thurmont. Interment was in Blue Ridge Cemetery.

### Mr. Kevin Young

Kevin Lee Young, 43, died March 25, 2005, at his home in Westminster, Md.

Born March 29, 1961 in Olney, Md., he was a son of the late Harold B. and Zelda Warthen Young.

Kevin was a 1979 graduate of Francis Scott Key High School, Uniontown, Md., and earned a B.A. from Salisbury State College. He volunteered at soup kitchens, Gettysburg National Military Park, and Pets on Wheels.

Surviving are three brothers, Richard A. Young, Blaine Young, and Robert Young; one sister, Patricia Alford; one uncle; one aunt; and numerous nieces, nephews and cousins.

Funeral services were held March 31 at Olin L. Molesworth P.A., Funeral Home, Damascus. Interment was in Damascus Methodist Cemetery.

## Fitzgerald's Auto Service

Repairs Service Maintenance Towing

### New Scooter Sale

125 MPG. Street Legal.  
No tags or insurance needed.  
Just Driver's License

Starting at \$699.99



Phone 301-447-6274  
17307 North Seton Ave.  
Emmitsburg, MD 21727

Petey Fitzgerald - Service Technician  
25- Years Experience  
Fully ASE Certified





# Jubilee foods



**DOUBLE COUPONS EVERYDAY!**



Chef's Fresh Value Pack  
**Boneless New York Strip Steaks**  
**\$5.99** Lb.



2 Ltr. Btl. Assorted Varieties  
**Pepsi**  
**99¢**



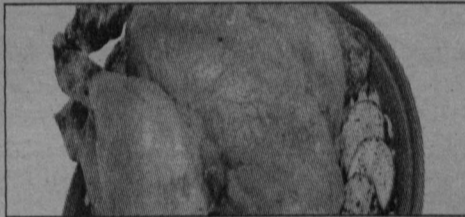
4-6 oz. Cups Assorted Varieties  
**Yoplait Yogurt**  
**10 FOR \$4**

## Early Spring BOGGO SALE



U.S.D.A. Choice Certified Angus Beef  
**Boneless Top Round London Broil**

**BUY ONE, GET ONE FREE**  
Of Equal Or Lesser Value



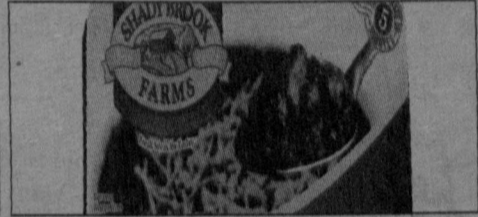
**Shurfine Homestyle Roaster**

**BUY ONE, GET ONE FREE**  
Of Equal Or Lesser Value



1 Lb. Pkg. Regular, Low Salt Or Maple  
**Oscar Mayer Sliced Bacon**

**BUY ONE, GET ONE FREE**



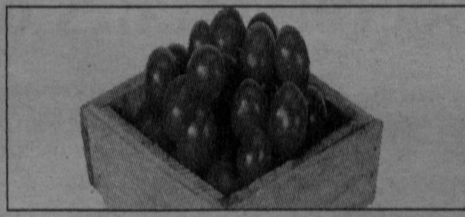
1 Lb. Pkg. Assorted Varieties  
**Shady Brook Turkey Entrees**

**BUY ONE, GET ONE FREE**



10-12 oz. Pkg. - Ready To Use! Italian, European or American  
**Fresh Express Salads**

**BUY ONE, GET ONE FREE**



Pint U.S. #1  
**Grape Tomatoes**

**BUY ONE, GET ONE FREE**



5 Lb. Bag White or Russet  
**Shurfine Fresh Potatoes**

**BUY ONE, GET ONE FREE**



1 Lb. Container Red & Ripe U.S. #1  
**California Strawberries**

**BUY ONE, GET ONE FREE**



16-25-18 oz. Btl. Assorted Varieties  
**Kraft Barbecue Sauce**

**BUY ONE, GET ONE FREE**



36 oz. Btl.  
**Shurfine Tomato Ketchup**

**BUY ONE, GET ONE FREE**



2.8 oz. Pkg. 4 Pack  
**Good Season's Italian Salad Dressing**

**BUY ONE, GET ONE FREE**



39 oz. Jar  
**Smucker's Grape Jelly**

**BUY ONE, GET ONE FREE**



64 oz. Btl.  
**Lucky Leaf Apple Juice**

**BUY ONE, GET ONE FREE**



20 Lb. Bag (Pre-priced 7.99) Hearty Beef Flavor  
**Dad's Big Chum Dog Food**

**BUY ONE, GET ONE FREE**



30 oz. Box  
**Post Raisin Bran**

**BUY ONE, GET ONE FREE**



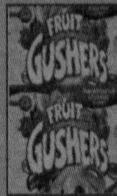
1 Lb. Pkg. - Rotelle, Elbow Macaroni, Cut Ziti, Vermicelli or Regular or Thin Spaghetti  
**San Giorgio Pasta**

**BUY ONE, GET ONE FREE**



7.5-8.75 oz. Pkg. Assorted Varieties  
**Bugles Or Chex Snack Mix**

**BUY ONE, GET ONE FREE**



5-5.4 oz. Pkg. Assorted Varieties  
**Betty Crocker Fruit Gushers**

**BUY ONE, GET ONE FREE**



17.7-21.4 oz. Pkg. Assorted Varieties  
**Tombstone 12 Inch Original Pizza**

**BUY ONE, GET ONE FREE**



100 oz. Btl. Family Size Bottle  
**Dynamo Liquid Laundry Detergent**

**BUY ONE, GET ONE FREE**



11-11.5 oz. Bag Assorted Varieties  
**Lay's Potato Chips**

**BUY ONE, GET ONE FREE**



30 oz. Loaf Plain or Seeded  
**Maier's Italian Bread**

**BUY ONE, GET ONE FREE**



8 oz. Pkg. Mozzarella, Italian, Mexican  
**Maggio Fancy Shredded Cheese**

**BUY ONE, GET ONE FREE**



56 oz. Cont. Assorted Varieties  
**Friendly's Ice Cream**

**BUY ONE, GET ONE FREE**



15.5-18.7 oz. Box Assorted Varieties  
**Swanson Hungry Man Dinners**

**BUY ONE, GET ONE FREE**



3 Roll Pkg. Prints  
**Sparkle Paper Towels**

**BUY ONE, GET ONE FREE**

PRICES EFFECTIVE: APRIL 2005						
S	M	T	W	T	F	S
			13	14	15	16
17	18	19				

•EMMITSBURG, MD •Rt 140 & Rt 15 •301-447-6688  
STORE HOURS: Monday-Saturday 6 AM-10 PM Sunday 8AM-9PM

We Reserve The Right To Limit Quantities. No Sales to Dealers Please. Not Responsible For Typographical Errors. Some Products Shown For Illustration Purposes Only and Do Not Represent Items Offered For Sale.



## ARTS & ENTERTAINMENT

### Celtic Magic, Dance and Song – Catoctin High Drama Department presents “Brigadoon”

Susan Allen  
Staff Writer

The enchanted Scottish village of Brigadoon will materialize again on the Catoctin High School (CHS) stage April 15-17. The 1947 Broadway musical by Alan Jay Lerner and Frederick Loewe, made into a 1954 movie, will take theatergoers through “the heather on the hill” and “home with bonny Jean,” as mystery is revealed and romance blooms in Brigadoon.

Director and choreographer Karen Stitely has updated costumes, props and other details for two of the lead characters, Americans Tommy Albright (Jake Puhl) and Jeff Douglas (Adam Blickenstaff.) In the original play, the two are on a hunting holiday in the Highlands when they are lost and reach a town not located on their map. Stitely’s version casts Albright and Douglas as present-day tourists; some dialog has also been changed to include contemporary references.

The hunters meet Fiona MacLaren (Kris Head), Charlie Dalrymple (Scott Gautney), “bonny” Jean MacLauren (Sara Lawson) and other residents of the oddly antiquated Brigadoon.

Stitely has emphasized “authenticity of performance” in the dances. She enlisted Dr. Russell Beaton, a Highland dancer and dance judge (and former Frederick County educator), as special choreographer for the “Sword Dance” and “Wedding Dance” routines.

Student choreographer Sarah Hashemzadeh is fulfilling her senior year project requirement with dance design work on the show. Hashemzadeh has more than ten years of dance company experience, including three other CHS musicals, and “is going to try to keep involved with community theater and dancing” while attending college next year.

Many members of the dance corps have performed with local studios. Patrick Cubbedge is a featured dancer in the role of

Harry Beaton. Another member of the ensemble is Yuliya Rozhylo, an exchange student from Ukraine, who has studied ballroom dancing for eight years in her home country. This is her first performance in an American

musical.

“Brigadoon” has more than a touch of Celtic culture and melodies that will ring in your memory. For more information, call the CHS office: 240-236-8100.



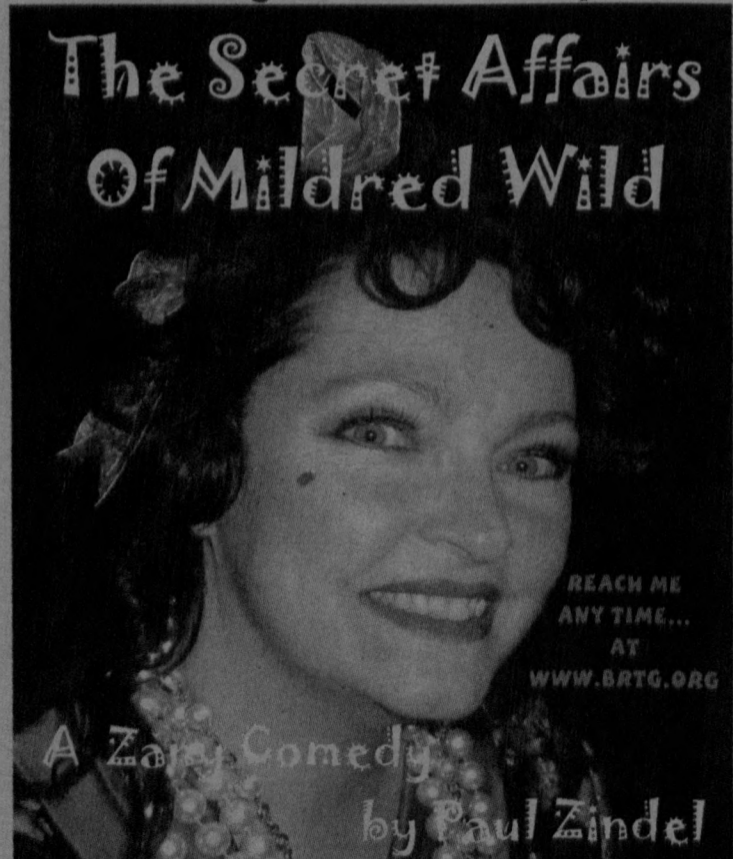
—RAYMOND BUCHHEISTER / THE EMMITSBURG DISPATCH

In dance, Maggie Anderson, portrayed by Sophomore Jenny Lawyer, mourns the death of Harry Beaton. Last week Catoctin’s cast of Brigadoon practiced a number of dance routines in preparation for their rendition of Alan Jay Lerner’s 1947 Broadway musical.

Our lives are better left to chance. I could have missed the pain. But I’d a had to miss the dance.

*The Dance.* —Garth Brooks

### The Blue Ridge Theatre Guild presents



**Fri-Sun, April 15-17— Carroll Valley Resort Hotel in Fairfield, PA. Info & Dinner Resrv.: 717-491-1096**  
**Sat, Apr. 23 @ 7PM and Sun, Apr. 24 @ 2PM –**  
**Arendtsville VHS Comm. Center, Arendtsville, PA**  
**Fri-Sun, April 29-May 1 – Thurmont, MD American Legion, Ticket Info. & Dinner Resrv: 301-271-7613**

### The Blue Ridge Theatre Guild presents “The Secret Affairs of Mildred Wild”

The Blue Ridge Theatre Guild concludes its 31st season with “The Secret Affairs of Mildred Wild,” a zany comedy by Pulitzer-prize winner Paul Zindel, during several productions in April and May at Carroll Valley Resort, The Arendtsville Community Center and the Thurmont American Legion.

The play centers around a woman barely existing behind a candy store in New York City’s Greenwich Village, married 27 years to a diabetic husband who can’t stop eating candy. Their building is about to be demolished and they will be forced to live on handouts from relatives. But heroine, Mildred Wild, is convinced that one of the movie stars in the over 3000 films she’s seen will somehow come to her rescue and take her away to Hollywood forever.

Mildred’s landlady is vying for her husband’s affections, and her sister-in-law is pushing her to move into a convent. Nonetheless, Mildred hangs onto the hope that she will win reach Hollywood with the help of some not-so-honest TV game show hosts. Her only ally in this world is the nearby meat-market butcher, Carroll, another movie fanatic who believes in her vision

that the public is secretly yearning for a heart-shaped hamburger.

All of this action is interspersed with classic movie scene reenactments from “Casablanca” to “Grease” that somehow spring full-blown from Mildred’s overly fertile imagination.

Director Beth Watson has assembled a zany cast to whip up the fun to a breathtaking pace. Eileen Winston stars as Mildred Wild; Spencer Watson as her husband Roy; Cookie Driscoll as Bertha, Denise Cofer as Helen, Bill Collins as Carroll Chatham, Joan Crooks as Sister Cecilia, Lori Drega White as Miss Manley. Justin Hockley as Rex Bulby, Michael Moresberger as Louis Garibaldi, and Sam Cofer with Christine Miller as the TV hosts.

#### Performances

**Carroll Valley Resort, Carroll Valley, Pa.**  
Friday April 15 - Opening Night Show, 8 p.m. Tickets: \$10.  
Saturday April 16 - Dinner Theater, 6:30 p.m. Tickets: \$30, show only at 8 p.m., \$10.  
Sunday April 17 - Brunch Theater, 12:30 p.m. Tickets: \$30, show only at 2 p.m., \$10.

Reservations required for dinner/brunch theatre. Cash or check accepted. Call 717-491-1096 or e-mail: [bluetheater@comcast.net](mailto:bluetheater@comcast.net).

**Arendtsville Community Center, Arendtsville, Pa.**  
Saturday April 23 – Show only at 7 p.m. Tickets: \$8.  
Sunday April 24 - Matinee at 2 p.m. Tickets: \$8.

**American Legion, Thurmont, Md.**  
Friday April 29 - Dessert Theatre at 7:30 p.m. Tickets: \$12.  
Saturday April 30 - Dinner Theatre at 6:30 p.m. Tickets: \$25, show only at 8 p.m., \$10.  
Sunday May 1 - Matinee at 2 p.m. Tickets: \$10.  
Reservations for dinner theatre: call 301-271-7613 or e-mail: [bluetheatre@comcast.net](mailto:bluetheatre@comcast.net).

The Blue Ridge Theatre Guild is supported in part by the STAR Grant Program developed by the Adams County Arts Council and funded by the Pennsylvania Council on the Arts, a state agency, the Adams County Commissioners, and the Borough of Gettysburg. For more information, visit [www.brtg.org](http://www.brtg.org).



# ACTIVITIES & PROGRAMS

## Library Events

### Storytimes

**Babies with Books** (birth-24 months with an adult)  
Wednesdays. April 13, and 20 at 10:30 a.m.

**Two Terrific!** (age 2 with an adult)  
Tuesdays. April 12, 19, and 26 at 10:30 a.m.

**Family Storytime** (ages 3-5 with an adult)  
Wednesdays. April 13, 20, and 27 at 7 p.m.

**Preschool Storytime** (ages 3-5 with an adult)  
Thursdays. April 14, 21, and 28 at 10:30 a.m.

### For Teens

**Teen Book Club** (grades 6-12) Discuss great books with other teens. Third Tuesdays. April 19 at 7 p.m. Selection: "The Last Treasure" by Janet S. Anderson.

**Paperclip Jewelry** (grades 6-12) Learn to make fun, unique jewelry with paperclips. Leave

with jewelry for yourself or a gift for someone else.

Thursday, April 28, 7-8:30 p.m. **Registration required.**

### Special programs for the family

**Leaving a Legacy: Writing About Your Life** (adults)  
Every person has unique legacy stories to pass on to future generations. Join this writing group and learn to record your stories, events, anecdotes, family characters and your personal observations of what life was like "back when..."  
First Mondays. April 4 and May 2, 1:30-3 p.m.

### Healing Through Horses

(ages 6-11)  
Learn about horses, their care and how they can help adults and children affected by illness, loss or any of life's difficulties. Join Joe Topper, owner of Breezy Hill Stables, and founder of Life Horse, Inc. and his horses.

Saturday, April 16, 11 a.m. to 1 p.m. **Registration required.**

### Third Thursdays at ThorpeWood

(ages 3-5)  
Thurmont and Emmitsburg Branch Libraries' monthly preschool story program at ThorpeWood Nature Retreat. Register at [www.thorpewood.org](http://www.thorpewood.org) or call ThorpeWood at 301-271-2823.

Thursday, April 21 at 1 p.m. **Registration required.**

### Knitting Club

(adults and teens)  
Our knitting circle is open to all, from beginners to experts. Even if you don't know how to cast on, someone in the circle will be able to demonstrate. Learn to make scarves, shawls, or other gifts. Bring your needles and yarn or give us a call.

Third Thurs. April 21 at 4 p.m.

### Book Discussion Groups/Adult Reading Club

**Evening Club**  
Second Tuesdays. April 12 at 7:30 p.m. Selection: "Life of Pi" by Yann Martel.

**Non-fiction Book Club**  
Second Thursdays. April 14 at 1 p.m. Read a funny book; bring a joke to share.

Programs are held at the Emmitsburg Library in the Community Center on Seton Avenue. For registration or info. call 240-629-6329.

### Strength Training:

Tuesday and Thursday, 2 p.m. Dress comfortably, wear athletic shoes, participants will use small weights. Led by Kathy Araiza.

### Bingo: April 13 and 27.

### Cards -

**500 and Bridge Group:**  
April 20.

### Canasta & Pinochle:

Fridays at 12:30 p.m.

Programs are held in the Community Center on South Seton Avenue. Call for lunch reservations 24 hours in advance. The Senior Center will close whenever county offices are closed. To register for special events or for information, call program coordinator Linda Umbel, 240-629-6350.

## Senior Events

Spring is here at last, and daylight savings time too, which may be a little less welcome!

**Meeting Day** is scheduled for April 19. There will be a covered-dish luncheon on April 20 at 11 a.m. The seniors will host their first evening card party of the season on April 27. Doors will open at 6 p.m. and play begins at 7 p.m. Reservations are being accepted for a May 4 bus trip to Allenberry Playhouse to see the musical, "Smoke on the Mountain."

**Bowling:** Mondays at Taneytown Bowling Center. Carpool; meet at the center at 12:30 p.m.

**Internet Made Easy!**  
Unlimited Access!  
**\$9.95** PER MONTH! No Credit Card Required!  
**FREE SETUP SOFTWARE** makes connecting fast & easy!  
**5 Email Addresses - Webmail!**  
INSTANT MESSAGING - AIM, MSN and Yahoo  
Free LIVE Technical Support!  
Immediate Access: [www.localnet.com](http://www.localnet.com)  
New! **EXPRESS 2.0** Surf up to 6X faster!  
Just 13 more... SAVE up to 60% over DSL!  
301-631-8158  
1-888-488-7265  
LocalNet  
RELIABLE INTERNET ACCESS SINCE 1994

## Master Gardeners Seminars "Gardening with Style"

The Frederick County Master Gardeners will present a series of gardening seminars from 7 to 9 p.m. on Monday nights from March 21 to May 9 at the Maryland Cooperative Extension office at 330 Montevue Lane, Frederick.

**April 18** - Landscaping with native plants that help the Chesapeake Bay, Jim Gallion

**April 25** - Attracting hummingbirds with specific plants, feeders and techniques, Annette Ipsan

**May 2** - Creating new plants from seeds, cuttings, divisions and layering, Betsy Devilbiss

**May 9** - Unusual and overlooked annuals, Lisha Utt

Cost: \$10 per session; hands-on classes require an additional \$5 materials fee (seminars on propagation and cement garden troughs). Pre-registration required. For a copy of the seminar brochure and registration form, visit the Cooperative Extension office, call 301-694-1595, or visit

the Web sites, <http://www.agnr.umd.edu/Frederick/Horticulture/> or <http://www.agnr.umd.edu/Frederick/MG/>.

Master Gardeners have completed extensive training through the Maryland Cooperative Extension and the University of Maryland. To find out more about the Master Gardener program, call 301-694-1596 or visit the Web sites listed above.

## Moon-Lit Acres

It's that time of year once again with Holidays, Vacations, Trail Rides and More.

Family operated and owned business. For all the Best Care we will be there.

- Services Provided:
- Exercising
  - Breaking
  - Feeding and general care while you're away
  - Training available for Horse and Rider

For more information contact Lara Hawbaker at 301-241-4772



## Carriage House Inn

200 South Seton Ave.  
Emmitsburg, MD 21727

Dear Carriage House Crew,

Our wedding is over and the newlyweds are back from their honeymoon. Now that things have settled down, we don't want anymore time to pass without telling you how much we appreciated working with you as you helped us plan our reception for our special day. We can't tell you how many comments we had about the atmosphere, the service and the food. The staff was very accommodating while we were planning and decorating the room. The servers were courteous, attentive and prompt with their deliveries, suggestions and ideas. Hat's off to the chef as we had many remarks about both dishes that were served - some people even wanted to know the recipes! And the food was served hot which we know is a challenge for a large group. We do appreciate that!

Again, thank you for your assistance, your cooperation, and your professionalism in making this a day to remember! We would be glad to be a reference for your business anytime.

Sincerely,  
Dave and Kathy  
Hagerstown, MD

Complimentary Roses  
For All Professional  
Secretaries At Lunch  
Secretaries Week  
April 25th -29th

**MULCH \$20 yd.**  
Screened or Unscreened Topsoil  
Dark Mulch \$20.00/yd  
Red Mulch \$28.00/yd  
Black Mulch \$28.00/yd  
Composted Mushroom Soil-\$17/yd  
Composted Cow Manure-\$15/yd  
Driveway Stone  
Landscaping Stone  
Sand  
Fill Dirt  
Snow removal  
17618 Old Gettysburg Road  
Emmitsburg, MD  
(301)447-2675  
Rodney McNair

Visit us today!  
**St. PETER'S BOOKS & GIFTS CAFE**  
• BOOKS  
• GIFTS & RELIGIOUS ARTICLES  
• CARDS  
• GOURMET COFFEE & TEA  
• MUFFINS, COOKIES, CHOCOLATE  
• & MORE!!!  
9am-6pm M-F  
9am-4pm Sat  
301-447-1901  
Seasonal Specials!  
101-2 Silo Hill Road • Emmitsburg, MD 21727 • By Jubilee Next to Subway



## MUNICIPAL MEETINGS

**April 18** - Emmitsburg Board of Commissioners. 7:30 p.m. Town Office  
**April 19** - Emmitsburg Streets and Transportation Committee. 7:30 p.m. Town Office  
**April 25** - Emmitsburg Planning and Zoning Commission 6 p.m. work session; 7:30 regular meeting  
**April 26** - Emmitsburg Town Election OLD Town Hall, 22 East Main Street - 7 a.m. to 8 p.m.  
**NOTE: April 12** - Testing of Emmitsburg Emergency Warning System (no specified time)

## LOOKING AHEAD

**April 12, 19, 26** - ThorpeWood Garden Club. Tuesday mornings, 9 a.m. to noon. Work in the Hilltop Education Garden to plant and learn about ways to garden in an ecologically sustainable manner. Registration required: [tdemedici@thorpewood.org](mailto:tdemedici@thorpewood.org) or 301-271-2823.  
**April 16 to May 1** - Safe Home weekend volunteer training. Saturday and Sunday, 9 a.m. to 4 p.m. and May 7 from 9 a.m. to noon. Volunteers are needed to help with the crisis and/or hotline. Call 301-637-2125, extension 246, to register.  
**April 16** - Thurmont Teacher of the Year. Nominations must be postmarked by April 16 for Thurmont Lions Club award to a teacher from Thurmont Primary School, Thurmont Elementary School, Thurmont Middle School or Catoctin High School. Nomination forms: 240-409-1747.  
**April 17** - Thurmont Lions Club Basket Bingo. Doors open at noon; games start at 2 p.m. Thurmont Activities Building, Thurmont Carnival Grounds. 22 games, raffles, door prizes, specials, tip jars. Tickets: \$15 in advance from Lions Club members or call 301-271-4020 and leave a message; \$20 at the door.  
**April 17** - Emmitsburg Area Historical Society. 7 p.m. Emmitsburg Community Center. Continuing look at old town maps, matching locations of old businesses and homes with new maps.  
**April 23** - ThorpeWood Trail Construction. 8:30 a.m. to noon. Construct a short trail to complete the trail system in our restoration area. Registration required: 301-271-2823 or [tdemedici@thorpewood.org](mailto:tdemedici@thorpewood.org).  
**April 23** - 2K Walk. 1-3 p.m. Downtown Westminster. The walk will start and end at 30 Carroll Street. Refreshments, t-shirts, and prizes. Proceeds to benefit the Shepherd's Staff, a non-profit organization serving Carroll County. For registration packets, call 410-848-8870 or 410-857-5944.  
**April 27** - Card Party. Doors open at 6 p.m.; games begin at 7. Emmitsburg Senior Center. Open to the public. Refreshments. Admission: \$2. Information: 240-236-6350.  
**May 14** - Noon Mushrooms and Wild Edibles of the Catoctin Mountains. 9 a.m. ThorpeWood. Limited to 15 participants Fee: \$5 non-members, free for Friends of ThorpeWood. Register by May 6, 301-271-0602. More information: [www.thorpewood.org](http://www.thorpewood.org).  
**May 19** - Third Thursday at ThorpeWood. 1-2:30 p.m. Free, but registration required: 301-271-2823.  
**May 26** - Spring Ephemerals Walk and Talk. 9-11:30 a.m. ThorpeWood. Limited to 15 participants Fee: \$5 non-members, free for Friends of ThorpeWood Register by May 6, 301-271-0602. More information: [www.thorpewood.org](http://www.thorpewood.org).

LOG YARD 301-447-3000



**JOHN H. COBLENTZ & SONS**  
 LICENSE #14  
 Buyers of Standing Timber and Veneer Logs  
 Lumber Sawed to Order

15842 St. Anthony's Rd. Dave 301-271-7587  
 Thurmont, MD 21788 Terry 301-271-4177

**The Main Street Grill**  
 Is Under New Ownership  
 Hours Of Operation Are As Follows:  
 SUNDAY THRU WEDNESDAY  
 11am to Midnight  
 THURSDAY, FRIDAY and SATURDAY  
 11am to 2am

Check us out on the internet at [WWW.MAINSTREETGRILL.COM](http://WWW.MAINSTREETGRILL.COM)  
 Check it out for our New Menu, Daily Specials and News about Upcoming Events.  
 Weekly Lunch Specials Are \$4.95 And Include A Soft Drink:  
 Monday: Spaghetti And Meatballs Thursday: Hot Turkey Sandwich  
 Tuesday: Any Burger Friday: Fish Sandwich  
 Wednesday: Pork Bbq Sandwich



**DAVE & JANE'S CRAB HOUSE**  
 RESTAURANT & LOUNGE

Sleaks, Seafood 2989 Tract Road  
 Chicken & Crabs Fairfield, PA 17320  
 Private Parties 717-642-5025  
 Crab Feeds 717-642-6574

HOOURS: Open Wednesday thru Saturday 11 am - 9:45 pm  
 Sunday 11 am - 8:45 pm, Monday & Tuesday 4 pm - 8:45 pm

Computer Services of Emmitsburg Inc.



Thomas Osborne Phone: 301-447-2093  
 A+ CERTIFIED E-mail: [cseinc1@verizon.net](mailto:cseinc1@verizon.net)

John Glass - President Jim Glass - Treasurer  
 Tammy Glass - Vice President

**MASON-DIXON OIL COMPANY**  
 301-447-3199

**Call for Price & Delivery**

9402 Waynesboro Pike, corner of Rt. 140 and Tract Road

**HARRIS HOME & GARDEN SERVICE**

All Phases of Lawn & Landscape Care  
 Chimney Sweeping Misc. Cleanup  
 Gutter Cleaning

Allen  
 717-642-5813  
 Toll Free 1-888-501-0813 Free Estimates



Friendly Service  
 Reasonable Rates

**GENE'S TOWING**  
 SNOW REMOVAL  
 Parking Lots \* Driveways \* Sidewalks  
 Jump Starts \* Flat Tires \* Lock Outs

Office: 301-447-2243 Eugene B. Troxell  
 Mobile: 301-676-0842 Emmitsburg, MD 21727  
 Fax: 301-447-2381

**DOCTOR PAGE INC.**

Cellular Phones & Pagers  
 Sold • Serviced • Repaired  
 Prepaid Wireless Refill Cards  
 Accessories • Batteries • Chargers • Cases

4 York Street, Unit 4 410-751-1800  
 Taneytown, MD 21787  
 T-Mobile • Nextel • Boostmobile and a whole lot more!



**CROSSROAD Emporium**

Art - Music - Gifts - Books - Custom Framing

2 Frederick St.  
 Taneytown, MD 21787  
 410-756-9235

Errands Plus  
**Copy Center**  
 The Convenient Company in the Foyer of the Emmitsburg Jubilee Grocery Store

Black/White Copies (Get a few copies or thousands)  
 Color Copies (Low prices on short run- 1-1,000)  
**Wide** Format B/W Copies + Faxing + Notary  
 UPS Shipping + Boxes/Packing

**Plus Errands Like...**  
 Grocery Shop & Deliver, Pick up/Delivery, Laundry Service, etc.

301-447-2804 Store 301-271-1050 Errands 301-447-2946 Fax  
[eppluscopycenter@aol.com](mailto:eppluscopycenter@aol.com)  
 Store hours 10 a.m.-6 p.m. M-Th, 10 a.m.-3 p.m. Fri, Sat 9 a.m.-Noon

## CLASSIFIED ADS

**NOW New Scooter Sale's** starting at \$699.00. 125 MPG. Street Legal. No Tags or Insurance needed. Just Drivers License. 301-447-6274  
**Attention Retirees.** Looking to make some extra money? I need a private driver. Please contact A. Shafer, 301-447-3322 or 301-271-1958.  
**Camper.** 2000 29-S Wilderness Camper, queen bedroom front, bunk beds rear, oak cabinets & trim, like new. Sharp. Must sell. 301-447-6881.

**Community Yard Sale.** Spaces available. Looking for participants for yard sale at Fellowship Baptist Church, Fairfield, Pa., April 23, 9 a.m. to 2 p.m. Spaces are \$10. No other fees. Turn your trash into cash! Widely advertised. Call Debbie at 717-642-8730.  
**Dispatcher Wanted.** Full-time position. Work from home. Training available. 301-447-3865.  
**For Rent: Ocean City.** 116 Street, bayside, tri-level

townhouse. 3BR, 2.5B, washer/dryer, dishwasher, pool, tennis court, sleeps 8. \$950/week in season. 301-447-2342.  
**House for Sale:** 4 BR, 2.5 Bath Colonial. 3 years old with finished basement, .25 acre on quiet cul-de-sac in Taneytown. \$289,900. Quick sale. Call 410-751-0381  
**J.C. Services Landscaping.** Landscape design and implementation. Tree and shrub trimming and removal. Deck building, repairs. Power washing homes, RV, fences, cement and brick. Mowing and property

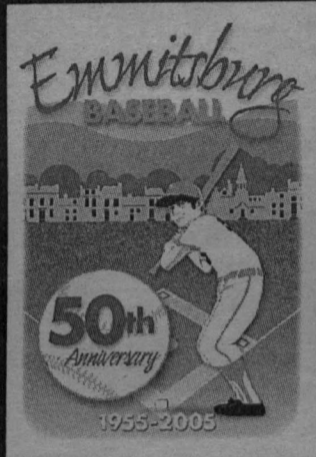
maintenance. Visit our website, [www.jcserviceslandscaping.com](http://www.jcserviceslandscaping.com), or call for appointment, 717-334-0956.  
**Part-time help needed.** Miscellaneous outdoor work. Minimum requirements: valid driver's license, ability to lift 50 lbs. Must be dependable. Call to inquire, 717-334-0956  
**J.C. Services Landscaping.**  
**Preschool.** Do you have a 3 or 4-year-old who would like to make some new friends while learning in a loving Christian environment? We are now taking applications for the 2005-2006 school year. Call for

registration materials; places are filling up quickly. 717-642-1553.  
**Surveyors wanted.** Party chiefs/instrument persons. Apply in person at CLSI, 5111B Pegasus Court, Frederick, or call Doug Adams at 301-662-1799. Resume can be faxed to 301-662-8004 or e-mailed to [dadams@clsi-civileng.com](mailto:dadams@clsi-civileng.com). Excellent benefits. Salary commensurate with experience.

**Place your Classified Ad**  
 301-447-3039 or [advertising@emmitsburgdispatch.com](mailto:advertising@emmitsburgdispatch.com)



# Emmitsburg Little League 50th Anniversary



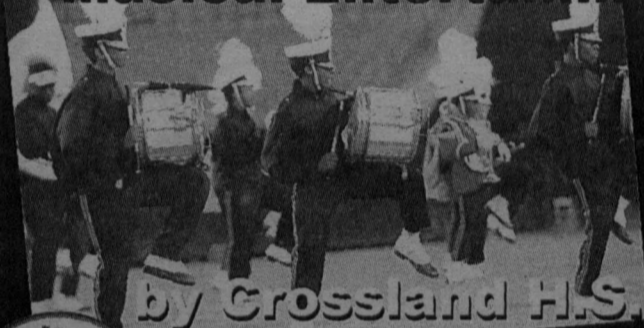
April 16, 2005  
10:00 AM

Ballfields at Memorial Park

Parking will be available at Mother Seton School,  
Farmers' Market lot on South Seton Ave

## Everyone is Welcome

### Musical Entertainment



by Crossland H.S.  
Marching Band

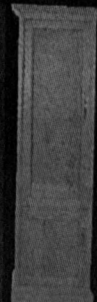


We'll be honoring the  
1955 team members  
and the 1985 District II  
Champions



### Silent Auction:

- Brook Robinson:** Autographed lithograph of Norman Rockwell painting
- Cal and Bill Ripken**  
Autographed baseball by Cal Ripken, Jr  
Autographed DVD Baseball Training Hitting, Pitching and Defense  
Autographed book Play Baseball The Ripken Way
- Aberdeen Ironbirds:**  
4 tickets to a Aberdeen Ironbirds game, Batting Hat, Baseball hat, Clock, Mascot
- Emmitsburg baseball 1955 Team Quilt**
- Elizabeth Prongas original water color painting**
- Reavers Woodworking Curio Cabinet**



Sponsored by *The Emmitsburg Dispatch Newspaper*

  
**The Emmitsburg Dispatch**  
*News and Opinion in the service of Truth*



# Up to \$1000 Cash Back

on a New Trane XLi  
Air Conditioner installation  
by Holtzople.

Offer ends May 27th, 2005

"Guaranteed same day  
emergency service  
for your broken home  
air conditioning or  
heating system, when  
a call is placed by noon."

## Holtzople



### Heating & Air Conditioning

Family Owned and Operated

**(301) 898-3494**

A division of Holtzople's Inc.

**1 (866) 500-HEAT**

(MD-HVAC 02-21528)

Come visit us online at [holtzople.com](http://holtzople.com) See us at [frederick.com](http://frederick.com) keyword hvac

## Outdoor products that outperform and outlast others.



LT 1042

#### CUB CADET® LAWN TRACTOR

19 HP KOHLER®  
COURAGE™ ENGINE  
SALE PRICE

**\$1,599\***

- 42" cutting deck
  - Hydrostatic transmission
  - Cast-iron front axle
- ZERO INTEREST FOR SIX MONTHS!**  
See your retailer for details.\*\*



SLT 1554

#### CUB CADET® SUPER LAWN TRACTOR

27 HP KOHLER® COMMAND®  
V-TWIN ENGINE  
SALE PRICE

**\$2,399\***

- 54" triple-blade cutting deck
  - Hydrostatic transmission
  - Large rear tires
- ZERO INTEREST FOR SIX MONTHS!**  
See your retailer for details.\*\*



RZT 50

#### CUB CADET® ZERO-TURN MOWER

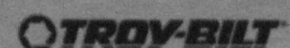
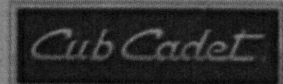
22 HP BRIGGS & STRATTON®  
INTEK™ ENGINE  
SALE PRICE

**\$2,999\***

- 50" cutting deck
  - Pivoting front axle
  - 360-degree maneuverability
- ZERO INTEREST FOR SIX MONTHS!**  
See your retailer for details.\*\*

**Service. Knowledge. Selection.  
Financing. Delivery.**

**Harrington & Sons**  
427 East Main Street  
Emmitsburg  
301-447-6666



\* Product Price - Actual retail prices are set by dealer and may vary. Taxes, freight, setup and handling charges may be additional and may vary. Models subject to limited availability.  
\*\* DEFERRED INTEREST AND DELAYED PAYMENTS FOR 6 MONTHS Offer is subject to credit approval by GE Capital Consumer Card Co. Applies to purchases of \$799 or more made until May 31, 2005 on a your Power® Credit Card. No finance charge will be assessed and no minimum monthly payments will be required on your promotional purchase balance, if you pay the promotional purchase balance in full by the end of the promotional period. If you do not, finance charges will be assessed on the promotional purchase balance from the date of purchase and minimum monthly payments will be required on the remaining promotional purchase balance. Standard account terms apply to non-promotional purchases and, after the promotion ends, to your promotional purchases. Annual Percentage Rate for purchases is 18.99% (18.99% minimum) as of 2/1/05, and may vary after that date. Minimum Finance Charge \$1. APR of 24.75% will apply if you fail to pay your minimum payment by your due date for two consecutive months. Financing promotion for residential customers only.  
† as rated by engine manufacturer.