

Emmitsburg The Regional Dispatch

Vol. I No. 1

Gaining Strength From Each Other

December, 1993

BULLETIN BOARD

LIONS FOOD DRIVE

The Emmitsburg Lions Club has begun its Annual Christmas Food Drive. The collection points are:

Zurgable Hardware (447-2020).

The Emmitsburg Jubilee (447-6688).

If you would like to make a cash donation please make a check payable to: Emmitsburg Lions Club, Box 1182, Emmitsburg, MD 21727-1182.

NEW YEAR'S DANCE

The Emmitsburg Ambulance Company is sponsoring a New Year's Eve dance, 9 p.m. to 1 a.m. Albert Hobbs, a local DJ, is providing the music for the event. Tickets are \$15 per couple and can be purchased at the door. Admission includes party favors, snacks, and set-ups. Recommend BYOB. For additional information call 447-6626 (the ambulance building).

The personnel of the Emmitsburg Ambulance Company extend wishes for a prosperous New Year to everyone, and invite you to ring in 1994 with them.

FAMILY FUN NIGHT

Bring your family and have some fun at the Rocky Ridge Fire Hall every Saturday evening. Doors open at 6:00 p.m.. Early Bird games will start at 7:15 p.m.

Continued on page 12

Dispatch Launched

BEST WISHES

The Emmitsburg Business and Professional Association, former publishers of the *Villager*, extends congratulation and best wishes to the *Emmitsburg Regional Dispatch*, which has received the support of residents, the E.B.P.A., the business community, and Emmitsburg Mayor William Carr and the town council.

The concept of disseminating information that will meet the needs of residents of the town of Emmitsburg, as well as the immediate and growing region outside of the town, has been enthusiastically received on all sides. In addition to area news, we look forward to informative articles which will add to the quality of life for all residents. The E.B.P.A. wishes to thank all former advertisers for their patronage in the past and encourages the business community to resume advertising in the *Regional Dispatch*.

If you've had a suppressed desire to be a "newshound," please call 447-6275. Let's talk about it.

To assure a flow of community based news we need:

A sports' specialist - Someone who would gather information about athletic teams from team leaders and coaches. We want to recognize the participation and achievements of the kids.

Correspondents - Somebody to gather news tidbits within their locality: weddings, anniversaries, birthdays, etc.; the kind of information that keeps people connected.

TRANSITION

Life is filled with changes in form. However, when the "torch is passed" the function continues. The *Crier* and the *Villager* were built from the concerns and energies of the originators. The community should be grateful to all of those involved. We should acknowledge the good work of Joan, Crystal, Elizabeth, Yvette, Pat, the mayor(s) and the Town Council and all the business persons and volunteers who believed in the purpose of a local newspaper.

This editor believes that people of the town and region should personally thank those who kept the conversation going. I want to be first in line to thank all of you, named and anonymous, who over the years have been involved with the *Crier* and the *Villager*. Thank you for caring and sharing your skills and energies and beliefs. Let the beat go on.

VISUALTEK MACHINE AVAILABLE

The Lions Club has a Visualtek Machine available for use by a person with impaired vision. It was purchased about eight years ago to aid a legally blind student at Mother Seton School.

For the past number of years, it was placed in the home of an elderly person. If you live in the Emmitsburg area and could make use of this machine, or know of someone that could, please call 447-2562 or contact any Lion member.

The machine is available immediatly.

COMMENTARY

We have chosen for our guiding principle the idea of gaining strength from talking with each other. This is the gist of remarks made by Janet Reno in describing her work in the fractured city of Miami. Community begins when we talk with each other in a way that allows the message to get through and when we listen with understanding to the concerns of others. This is the beginning of problem solving.

How soon this belief would be applicable for us! Emmitsburg was recently visited, so to speak, by its past in the form of a log house framework, circa 1830's, on Main Street. The structure was uncovered in the process of preparing for the necessary and critical expansion of the fire department. The fire company is not to be faulted. We should applaud and thank them for the services provided and for anticipating future needs in order to maintain their high quality of service.

What we were seeing was an intersection of time lines. The past and the future were overlaid in the present.

The Emmitsburg Regional Dispatch

Publisher/Editors
Bo and Jean Cadle
Writers
Emma Keeny
Diane Walbrecher
Copy Editor
Pat Howes Bell

Advertising and copy deadlines are the 2nd Friday of the month prior to publication. Neither the publisher or the editor will be liable for misinformation, misprinting, or typographical errors. The publisher reserves the right to edit any submitted material.

The Emmitsburg Regional Dispatch
Box 10635 Harney Road
Emmitsburg, MD 21727
301-447-6275

New thoughts came into awareness. We were in an quandary. How can we make way for the future without losing our past? When is an old structure worth saving? What guide lines do we need?

Reactions to the removal of the log framework were heard across town. There were "should haves..." and "could haves.." as the disassembly continued. These remarks were also well intentioned, but there is reason to pause and reflect. Reactive positions based on "shoulds" and "coulds" and even "rules" often lead to entrenchment and the futility of sniping and loose cannon balls. This is a tactic that causes a lot of mess, hurts people for unclear reasons, and generally accomplishes little but continuing alienation.

What we have here is an opportunity to begin some long range planning for the historic area and historical buildings as part of the total community. This present situation is but one of many that in the near future will challenge us all: the public service sector, the business community, and the private citizen.

How *do* we make way for the future without losing our past? How *will* we manage the development and growth that is beginning to surface within our area? How *can* we stimulate our economic development without polluting and affecting the quality of life in our town and area?

This is a time to apply the processes of synthesis rather than fragmentation. Don Harbaugh, who disassembled the framework, made prints and marked each piece so he can reassemble it. Isn't Don's action an example of the common sense of synthesis? This is one man's answer to the problem of making way for the future without losing the past.

LETTERS TO THE EDITOR

We encourage our readers to write to the editor about stories and issues that appear in this newspaper or are important to our readers. Letters should be brief and must include address, signature, and daytime telephone number for verification. We will not accept unsigned letters.

SOUND OFF

To contribute to Sound Off write your views on any subject anonymously, but you must identify yourself as a TOWN RESIDENT or REGIONAL RESIDENT. This newspaper will edit messages according to space, brevity, timeliness, and good taste. Comments are limited to one or two sentences. Submit your remarks by postcard. Normal deadlines apply.

While trying to pass through the Square I waited for three light changes to make it across. Since I started even with the bank door, I thought this was an excessive delay. Come on! Can't the signal be controlled better than that?
Regional resident

The parking at the Post Office is a mess. Isn't there room for making it bigger and easier to get into and out of?
Town resident

100 Years Ago "In This Place"

From *The Emmitsburg Chronicle*

Dec. 1, 1893 - In the evening Mr. James L. Motter, of near town, met with an accident near the square in this place. He was driving up street while a Mr. Shorb was going down town with two horses in a carriage and the teams collided. One of Mr. Shorb's horses was thrown to the ground, while Mr. Topper's horse broke out of the harness and demolished the shafts. No one was hurt.

Saint Joseph's Academy of this place has been awarded a World's Fair award for literary and art work and embroidery, and also a medal for exhibit of school work.

On last Friday evening, Mr. Daniel Krug, of near Motter's Station, whilst going out of Mr. Charles C. Dritzler's barber shop in this place, tripped and fell from the second step to the pavement, breaking one of his legs near the hip. Mr. Krug is an aged gentleman and it will be some time before he will be able to use his limb.

Mr. John H. Mentzer, of this place, killed four large hogs which weighed 301, 275, 283, and 291 lbs. respectively.

Christmas works its magic at The Lamplight and Holly Festival.

Once again the seasonal events of caroling, hay rides, and visits from Santa transform our community. Special treats are spread over the holiday season. Enjoy.

DEC. 3 6:30 p.m. - 9:00 p.m.

COUNTRY CHRISTMAS FARE - GRAND OPENING

Community Center. A chance to do your holiday shopping. Select gifts from the works of over 30 artists and craftspersons.

CHRISTMAS EXTRAVAGANZA - KICKOFF

Antique Mall. An opportunity to find the perfect treasure for that special person.

DEC. 4

9:30 a.m. - 11:00 a.m.

Continental Breakfast with Santa. Free. No reservations. Carriage House Inn.

10 a.m. to 5:00 p.m.

Country Christmas Fare - Community Center, Christmas Extravaganza - Antique Mall.

11:00 a.m. - Movie. The Royal Ballet production of *The Nutcracker* - Library.

DEC. 5 3:00 p.m.

Christmas Concert - A festival of music featuring local church choruses. Directed by Gary Schwartz. - St. Joseph's Provincial House.

DEC. 6 6:00 p.m. - 9:00 p.m.

AN EVENING OF CHRISTMAS. Carriage House Inn

Live Nativity, caroling, hay rides, Santa, cookies, and hot chocolate.

Dec. 11 6:00 p.m. SILVER BELL CAROLING on horseback. Meet at the Library. Wagons provided for those without suitable equine transportation. Refreshments follow.

Dec. 12 6:30 p.m. CHRISTMAS FAMILY NIGHT,
Sunday School Programs at the
Elias Lutheran Church.

Dec. 18 10:00 a.m. - 1:00 p.m.

ANNUAL CHRISTMAS PARTY. Entertainment and
lunch for the kids. Fire Hall. Sponsored by Lions Club.

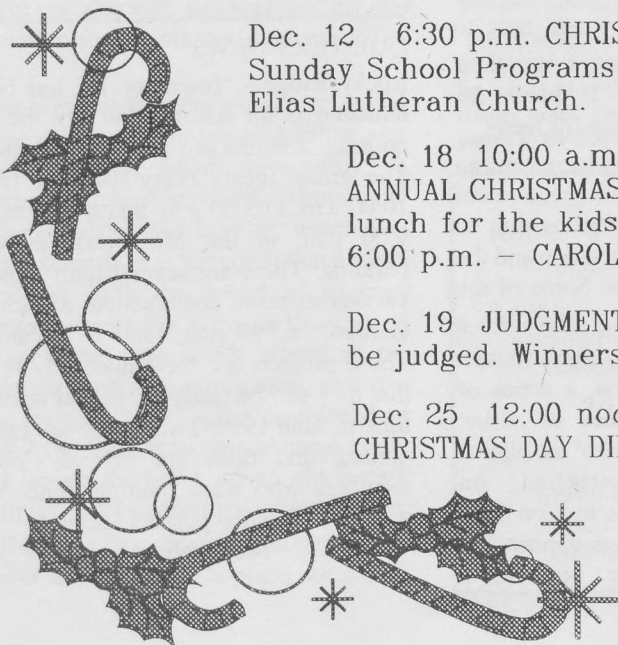
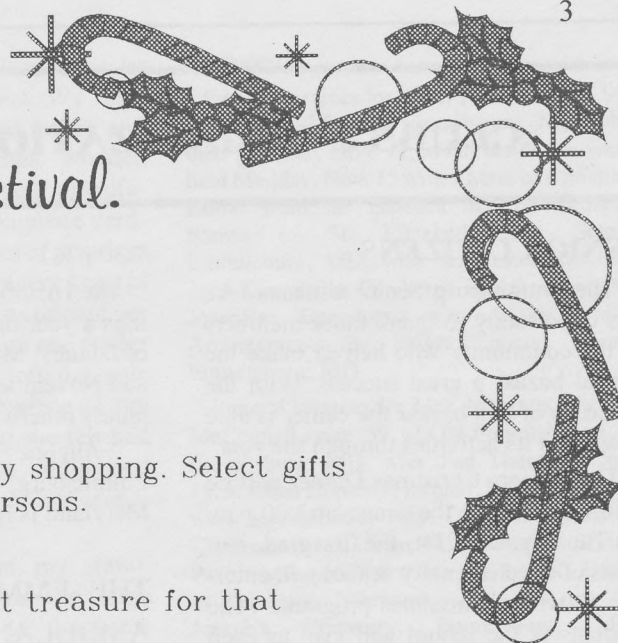
6:00 p.m. - CAROLING AROUND TOWN. Elias Lutheran Church.

Dec. 19 JUDGMENT DAY - Decorations of houses and buildings will
be judged. Winners to be announced Dec. 20 at the Town Office.

Dec. 25 12:00 noon - 3:00 p.m.

CHRISTMAS DAY DINNER, Carriage House Inn. Reservations required.

For more information about the Lamplight and Holly Festival
call Crystal Gauss at 447-2222.



CLUBS & ORGANIZATIONS

SENIOR CITIZENS

The Emmitsburg Senior Citizens take this opportunity to thank those members of the community who helped make the annual bazaar a great success. With the proceeds of this bazaar the center is able to support its activities through the year.

The Seniors Christmas Dinner will be held Dec. 13th at the center at 2:00 p.m. On Tuesday, Dec 21st, the first grade students of the elementary school will entertain us with a Christmas program. (The students of the school will visit us each month until June.)

During Christmas vacation we will be eating at Corney's (Dec. 23, 27, 28, 29, and 30.) Reservations MUST be made.

Lunch is available Mon. - Fri. at the center at 12:00 noon. Reservations must be made by 1 p.m., 24 hours in advance. The center is open 10 a.m. - 2 p.m., Mon. - Fri. Anyone 60 years and older is eligible to participate in all the activities.

THE EMMITSBURG COMMUNITY CHORUS

The Emmitsburg Community Chorus under the direction of Gary Schwartz and accompanied by Patricia McElroy will present its 30th annual Christmas Concert on Dec. 5, 1993, 3:00 p.m., at the Basilica of St. Elizabeth Ann Seton, 333 South Seton Avenue, Emmitsburg, MD.

The concert will highlight several movements from Handel's Messiah as well as many familiar Christmas carols.

The concert is open to the public and the facilities are accessible to all. A good-will offering will be taken up at the concert.

For more information please call Gary Schwartz at 301-898-1089 or Shannon Boyle at 301-447-6060.

HISTORICAL SOCIETY

The January meeting of the Emmitsburg Historical Society will be on Tuesday January 4, 1994, at the Library multipurpose room of the Community Center at

7:30 p.m.

The Historical Society holds six meetings a year on the first Tuesday evening of January, March, May, July, September, and November at the multipurpose room unless otherwise announced.

Anyone interested in the history of Emmitsburg, Frederick County, and Maryland is invited to attend.

THE EMMITSBURG AMBULANCE COMPANY

The following statistics show that October was a busy month for the Company. It made 50 calls and traveled 1,161 miles. One hundred thirty-nine company hours were worked and there were 49.45 personnel hours.

Thirty medical emergency calls were made. There were six fire assist calls, five routine calls, five vehicle accidents, and four station transfers.

WOMEN'S SUPPORT DIALOGUE

Look out, Emmitsburg, there is a new group in town! Every Wednesday at noon the WOMEN'S SUPPORT DIALOGUE has its meeting at the Emmitsburg Library multipurpose meeting room in the Community Center. An informal gathering of interested women meet to discuss everything from how their morning went at home to plans for starting a local theatre group for teens.

The desire of the group is to remain an informal assemblage without requirement of dues or tedious expectations, but to allow for the flow of conversation and the exchange of creative ideas. Some of the ideas in the early planning stages are a theatre group for producing plays written and enacted by local teens, a series of talks and lectures illustrated by visual aids on various topics such as Native American Culture, instruction on environmental issues with tips on how individuals can contribute, and more.

The WOMEN'S SUPPORT

DIALOGUE welcomes women of all ages and educational backgrounds. The only requirement is a desire to be part of the gathering. This group is not affiliated with any institution or other organization. Just bring your thoughts, feelings, and ideas to share for an activity to the Wednesday noon group and let the spirit flow. For more information call K J Myers 447-6907.

LIBRARY NEWS

The Senior Citizens' Art Group has a display in the multipurpose room. It will be on display until Dec. 12, 1993, after which the Christmas show will be on display. Treat yourself by dropping by to see the beautiful art of the seniors.

In January, we are planning another art exhibit which will include some sculpture. Look for coming information. We will also have a series of movies on *The World of Joseph Campbell: Transformation of Myth Through Time*. It will begin Jan. 11, at 7 p.m. and continue bi-weekly.

New books are added to the Library's collection all the time. There is a wonderful collection of Christmas books for the family.

Merry Christmas to all of you from us at the Library.

ARTS & CRAFTS

QUILTERS' NEWS

Rocky Ridge - "Inspector 13" has been lenient over the summer, but now the fall quilting sessions are back on schedule. The group meets every Tuesday from 10:00 a.m. to 3:00 p.m. and 6:00 p.m. to 9:00 p.m. at the Mt. Tabor activity building. There are several quilt tops in various stages of construction: a "Flower Garden," a "9-Patch," and a "4-Patch." These projects are for winter '93-'94 so that they can be ready for sale at auction time in June 1994. Two quilts are being quilted, and there are several church members who want quilting done. We will need needle pushers, scissors

continued on page 12

FEATURE

Our hope is to make the feature column a regular part of this paper. There are many people in this area who are writers or poets or who have special interests, hobbies, collections, etc. We hope that readers will share their interests, skills, and arts with others. These special interests and talents add more to a community than can be measured by the usual measuring sticks of our time. Aldo Leopold, the conservationist, called this unquantifiable effect "the physics of beauty."

Remembering Grandmother's

by Robert Streeter

Frederick, MD. - My memory cannot grasp the first time I journeyed to this house with my young parents. I was only an infant, and whatever I saw I failed to retain, my mind unable to carry the memory beyond the day it was made. But slowly, like a sunrise, the memories began to emerge and shed light, and I can picture the huge willow tree which used to stand at the bottom of a hill, marking our turn onto South Clifton Road and the short winding climb to Grandmother's house.

A dark lane led from the road, shaded by magnificent oak trees over a century old. Deep gravel covered the lane, and the rich sound of tires meeting gravel always echoed beneath the trees to signal our arrival. Within moments we would see the house, the vista - a setting I thought every child experienced when visiting grandparents. The passing of years quickly taught me otherwise and seasoned my appreciation for the place at the end of the lane.

The house is two stories, almost as old as the oaks, with white wood siding and green shutters. Most importantly, a screened porch wraps halfway around the house and faces a wide valley which harbors Frederick. It is the porch that always drew me, with the sound of summer breezes beneath the oaks and the sight of distant lights. My family would sit for hours on the porch, eating meals and visiting as the valley lights brightened at dusk. After dark, sleep would come easily as I lay on the porch on an old feather mattress, wool blanket pulled to my chin.

The attic was another captivating portion of the old house, a place my grand-

mother would take us exploring for an hour or two during each visit. We rummaged through boxes of old books and magazines, chests of clothes, wooden model ships built by my great-grandfather, Civil War muskets, exquisite cardboard castles, and more boxes of priceless possessions which grandmothers keep in their attics. She always told us tales of her treasures, moving slowly from one corner to another, and we never left the attic without carrying a tangible piece of my grandmother's life, anything she felt had been in darkness too long and hoped would live on in the hands of her grandchildren.

I turned 32 this autumn, my grandmother 80. I am sitting on the same screened porch attached to the same memorable house, watching and feeling the fingerprints of time. Every year I see more lights in the valley at dusk, and hear more traffic on the interstate.

But the oak trees are bigger and more majestic than ever, and the breezes still cool beneath their crowns. The house itself is a constant in my life, something I can depend on to look and feel the same amid change, to elicit the same memories from an innocent time. I know where the floorboards creak; I know that the old wooden toolbox is in the pantry; and I know the sweet smell of the attic. Tiny pieces from one person's mind; no stranger would care. But we all have lives constructed of tiny pieces, lives that radiate from a series of people and places which helped us along our way and created fine memories, like a grandmother and her house on a hill.

Robert Streeter is a columnist for the *Berkshire Eagle* in Pittsfield, Mass.. Grandmother, Corrie Douglas, turned 83 in October. Robert's mother lives on Harney Road. The column reprinted here, first appeared in the *Eagle* and then in the *Frederick Post*.

Robert F. Gauss & Assocs.

Professional Land Surveyors

Land Surveying
Engineering
Planning



301-447-2222

Fax 301-447-3158

Emmit House, PO Box 128
601 W. Main Street
Emmitsburg, MD 21727

Funerals

Funeral services for Sister Rose Milanof, 90, of Villa St. Michael, Emmitsburg, MD, who died Thursday Nov. 11, at her residence, were held Monday, Nov. 15 with a Mass of Christian Burial from the Basilica of The National Shrine of St. Elizabeth Ann Seton, Emmitsburg, MD, with her Pastor Rev. Fr. John King as the Celebrant. Interment was St. Joseph's Cemetery, Emmitsburg, MD. Arrangements by Skiles Funeral Home, Emmitsburg, MD.

Funeral services for Mrs. Margaret Theresa McConnell Price, 59, of Old Emmitsburg Rd., Emmitsburg, MD, who died Thursday Nov. 11, at Johns Hopkins Hospital, Baltimore, MD, were held Monday Nov. 15, with a Mass of Christian Burial from St. Anthony's Shrine Parish with her Pastor Rev. Fr. Leo R. Tittler as Celebrant. Interment was in the new St. Joseph's Cemetery, Emmitsburg, MD. Arrangements by Skiles Funeral Home, Emmitsburg, MD.

Funeral services for Mr. Francis Richard Kelly, 88, of W. Main St., Emmitsburg, MD, who died Friday Nov. 12 at his residence were held Tuesday Nov. 16 with a Mass of Christian Burial from St. Joseph's Roman Catholic Church, Emmitsburg, MD, with his Pastor Rev. Fr. Alfred R. Pehrsson as the principal Celebrant. Interment was in the new St. Joseph's Cemetery, Emmitsburg, MD. Arrangements by Skiles Funeral Home, Emmitsburg, MD.

A word about pre-arrangements and pre-financing



The funeral serves a wide range of purposes, with religious, psychological and physical significances. There are many aspects and details to the meaningful funeral that are arranged with the assistance of the professional funeral director, usually at the time of need. However, some people prefer counseling prior to need.

We offer complete information on pre-arrangements and pre-financing, available without cost or obligation of any kind. Feel free to contact us at your convenience.

SKILES FUNERAL HOMES

Serving the Community Since 1878
P.O. Box 427
210 W. Main St.
Emmitsburg, MD 21727



Zurgable Bros. Hardware



301- 447-2020

Builders Hardware
Garden Supplies

Lumber
Farm Supplies

Sakrete Cement
Rug Doctor

Special



\$21⁹⁹
NEW
Rechargeable
Spotlighter Ultra™



\$12⁸⁸
Old Timer Jr. 3-Blade
Folding Pocket Knife

1663 Old Frederick Road Emmitsburg, MD 21721

If you saw too much of this last winter, call us now.

We'll show you how a new Weil-McClain Model 68 oil boiler could save you hundreds of dollars on your heating bill next winter.

The fact is, many older boilers operate at only about 60% efficiency. That means that as much as 40% of the fuel you're paying for could be going right up the chimney. The new Weil-McClain 68 oil boiler operates at over 84% efficiency—so it can save you enough money in oil bills to pay for itself in a few short years.

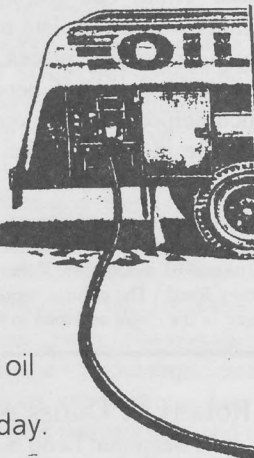
Find out how much you could save—call us today.

Your Weil-McClain High Energy Heating Specialist

JOSEPH C. RECKLEY

PLUMBING & HEATING & A/C BACKHOE SERVICE

302 W. Main St. Emmitsburg, MD 21727 301-447-6212



Joanne's

Cut & Curl Professional Stylist

SALON PRICES

Wash/Set \$8.00
Shampoo/Condition / Cut \$8.00
Shampoo/Condition/Cut/Blow Dry . \$10.00
Kids 'Cuts \$5.00
Perms \$30.00

447-2294

We feature TRIM FAST

Lose 5 - 15 pounds in 30 days. All natural Herbal Energizer and Super Fat Burner. Diet No More and still eat your favorite foods.

Hours:

Monday 9 - 3 Tuesday 9 - 7

Wed. Thurs. - Closed

Friday 9 - 7 Saturday 9 - 2

Joanne Ligg - Owner

By Appointment

212 DePaul St. Emmitsburg, MD



Topper Insurance Agency

"Insure In Sure Insurance"

PO Box 211

Emmitsburg, MD 21727

Thomas L. Topper - Office (301)447-6174

'TIS
THE
SEASON
TO
BE
SAVIN'



Zerfings ACE Hardware

Gettysburg
13 Baltimore St.

Littlestown
S. Queen St.

HIS PLACE, INC.

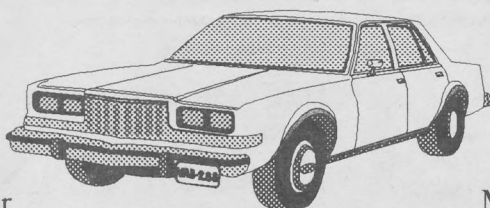
14930 Sixes Bridge Road, Emmitsburg, Md 21727

COMPLETE AUTOMOTIVE SERVICE

447 - 2800

MONDAY thru FRIDAY; 8:00 - 5:00

Four Wheel Alignment
 Welding and Brazing
 Exhaust Tune-Up
 Complete Restoration
 Transmission Repair



Computerized Wheel Balancing
 Coolant Flush and Recycle
 High Performance Work
 Refrigerant Recovery/Recycling
 MD State Inspection (All Vehicles)

General Engine Repair and Rebuilding Auto Body Paint and Repair

PICK-UP & DELIVERY AVAILABLE (Limited Area)

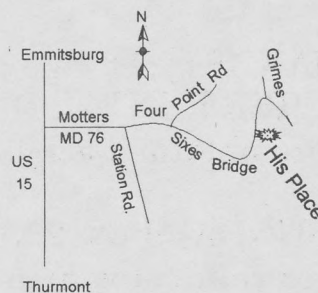
DALE WOOD, MANAGER
 ASE Certified Master Technician, Auto Repair

BILL SMITH
 Auto Body and Paint

WILLIAM C. KUHN, JR.
 Owner



Lube, Oil Change & Filter
 Check All Fluid Levels
 Rotate Tires and Check
 Brakes . . . \$29.95



WE HONOR ALL OIL CHANGE COUPONS
NOVEMBER & DECEMBER SPECIAL

Winterize, Flush Coolant System
 Check Belts & Hoses, Renew
 Antifreeze As Necessary

\$49.95

(Parts & Labor Included)

TV VIDEO

EMMITSBURG VIDEO
304 E. Main St.
Emmitsburg, MD 21727
301 447-2995

THE FAMILY VIDEO STORE WITH SMALL-TOWN SERVICE AND BIG-CITY SELECTION

OUR HOLIDAY HOURS

DEC 24TH - We will close at 5:00 P.M. on Christmas Eve.

DEC 25TH - We will be closed. This is a FREE RENTAL DAY. Movies rented on Friday are not due back until Monday!

DEC 26TH - We will be open on Sunday for your convenience.

DEC 31ST - We are open until 10:00 P.M. on New Year's Eve.

JAN 1ST, '94 - We are closed on New Year's Day. This is a FREE RENTAL DAY! Movies rented on Fri. (New Year's Day) are not due back until Monday.

SUNDAY JAN. 2ND - We are open from 11:00 A.M. to 7:00 P.M. for your convenience.



*Wishing you a safe
and happy holiday!*



TV VIDEO TIP

Cold temperatures affect tapes.

Always allow a tape that has been in a cold car to warm before playing. Condensation can form as the tape changes temperature and, this moisture can severely damage your VCR. In addition, cold tapes can break!

EMMITSBURG ELEMENTARY TO USE NEW REPORT CARD

By Dianne L. Walbrecker

In an effort to improve communications with parents, Emmitsburg Elementary School is joining with Thurmont and Sabillasville Elementary Schools to use a new report card addendum for Language Arts. The new report card will apply only to students in pre-K through third grades and will replace the old system of evaluating students with a U, N, S, or O in the Language Arts curriculum.

Students will be evaluated by their teachers in three different categories: Comprehension, Word Attack, and Communication (both writing and speaking skills). Rather than getting a letter grade, each student will be given one of the following Progress Key items: Not applicable at this time, Requires continuous teacher guidance, Steady progress demonstrated, and Demonstrates independent understanding. Emmitsburg Elementary's Reading Specialist Sharon Hartley said, "The purpose is to provide more detailed information about the progress of the child and to be more reflective of the way we teach. Parents will be able to work more effectively with their children because they will have a better idea about what the children are working on."

For instance, if a teacher is just beginning to teach children to identify rhyming words, one of the word attack clues, then a child would be expected to need continuous teacher guidance. However, the student should eventually move to demonstrating steady progress. If the child hasn't done so, then the parent can help with the specific skill.

The new report card addendum, first used in November 1993, was developed by a committee of teachers, parents, reading specialists, principals, and administrators from each of the 3 schools involved, along with central office staff. The work began in the fall of 1992, and then the new report card was approved by the Frederick County Board of Education. While Carroll County, MD, is trying similar report cards for its Language Arts, the Catocin Area Feeder Schools are the only elementary schools in Frederick County using this new format.

"We had a PTA meeting to explain the new format to the parents, because

anytime you change a report card it's going to be difficult to understand," explained Ms. Hartley. "At conference time, we'll have someone sitting at the front of the school to ask if parents have any questions about the report card, either before or after the conference."

The schools report no reluctance from the teachers to using the new report card, especially because it will mean less paperwork for them to do. Since the report card is based on the essential curriculum for Frederick County, teachers would have made this assessment anyway. Let's face it, less paperwork is good for all of us and ultimately makes more time for students.

EMMITSBURG ELEMENTARY STUDENTS RAISE \$6,000 FOR PTA

The Emmitsburg Elementary students worked hard at the beginning of this school year to sell fundraising items that will help the PTA support the school. The PTA uses its funds to send the children on field trips, to bring in cultural arts programs, to buy musical instruments, to buy books for the school library, and to give teachers additional funds to add to their classroom supplies. Following is a list of the 10 students who sold the most items during the Fundraising Drive and the names of their teachers.

- Joshua Workman - Mrs. Brennan
- Pamela Blevins - Mrs. Reed
- Bradley Shafer - Mrs. Urbin
- Chris Kelley - Mrs. Evans
- Jessica Hutts - Mrs. Minoglio
- Adrian Ott - Mrs. Perry
- Aaron Reckley - Mrs. Evans
- Eric Speak - Mrs. Minoglio
- Danielle Hoover - Mrs. Perry
- Christine Glacken - Mrs. Hise

Amanda Sanders won the Grand Prize Drawing - a portable compact disc stereo AM/FM radio cassette recorder. Her name was chosen at random from the names of all the children who sold 20 or more items during the Fundraiser.

.....
Happy Holidays!

3RD GRADERS'

COMMUNITY SERVICE

By Sharon Cramer

On October 27, 1993, in celebration of "Community Service Day," Mrs. Hise, Mrs. Janik and Mrs. Johnson's third graders planted tulips around the steps of the Community Center. Mrs. Terri Zigler said this is the second year Emmitsburg Elementary School and the Town Office have taken part in this state wide event. This is all part of a program called "Frederick County Student Service Learning" that will be going on through the year. The theme this year was "Beautification of Emmitsburg Sites." The children learned that flowers are a lot like them: they are always growing. When asked why he enjoyed the day, Buddy Johnson said, "Because we were planting flowers that everyone can see, and the flowers represent the students that planted them to the rest of the community." Yvette Semler said all the children worked hard and we will see their efforts in the spring. I think the community needs to give a big hand to Mrs. Zigler for her hard work in getting this community grant.

NOTICE OF CHRISTMAS PROGRAM

This year's winter program will be a musical called "Sombrero for Santa." First through third grades will be performing the musical December 13, 7:00 p.m. at the elementary school. The public is invited.

New Pets and Christmas Don't Mix

The Frederick County Humane Society reminds us that the holidays are the worst time to add a new pet to the family. Animals often become frightened and confused in the new surroundings. A new pet is often lost among all the toys, games, and excitement. Overzealous hugging often provokes kittens and puppies to scratch or bite.

Dangers abound for all pets during holiday activities. Cats and dogs can choke on turkey bones or tinsel, become poisoned by chocolate or mistletoe berries, or be electrocuted when chewing electrical cords.

Consider giving a homemade gift certificate, a water bowl, or a leash as a symbol of the pet you plan to give. Then, after the Christmas rush has subsided, go along and help select a special pet. Please consider choosing one of the loving animals at the Frederick County animal shelter

CHURCHES

THE EMMITSBURG COUNCIL OF CHURCHES

History and Future

by Paul Harner, President

When asked to inform the community about the various efforts of the Emmitsburg Council of Churches, we jumped at the opportunity. We feel we have been doing some good things, but could do, and hope to do, so much more.

First, a little information about the Council which was formed in 1966. Its Executive Committee includes the pastor(s) and two members from each of the local churches. Its purpose, as stated in its constitution, is to "provide the framework whereby the member congregations worship and work together." This phrase "work together" has, we believe, not only brought about some very positive relationships between the community churches, but also produced some noteworthy results. Over the years it has sponsored many community events such as "Community Days," honoring our local doctors, pastors, firemen, Ambulance Corps, American Legion, and VFW. It initiated the Senior Citizens Group, organized the first Community Choir in

1967, and directs and sponsors the very popular yearly Vacation Church School. It has supported national efforts such as Project Hope, CROP, and the Hurricane Hugo Relief Committee. However, its primary efforts and major funding requirements are currently focused on helping those within the community who need temporary help in making ends meet (rent, heat, electricity, etc.). This has become a much larger problem within the past couple of years and we are unfortunately limited in the amount of aid we can offer.

As noted above, our constitution also refers to the congregations worshipping together, and this we do every Thanksgiving, Easter Sunrise, and during the Sunday evenings of Lent. These services rotate among our member congregations: St. Anthony's Catholic Church, Elias Lutheran Church, The Daughters of Charity, Incarnation United Church of Christ, St. Joseph's Catholic Church, Trinity United Methodist Church, Tom's Creek Methodist Church, and the United Presbyterian Church. The uniqueness of these services is that the community aspect is emphasized; for example, pastors preach the homilies at other than their own parishes. (The Easter Sunrise Service is always held at the Grotto.) These community services are the primary source of the Council's funds.

This year has been a busy year. In addi-

tion to the services mentioned above, we combined our efforts with the Thurmont Ministerium in conducting a Baccalaureate Service for the 1993 Senior Class of Catoctin High School at Mt. St. Mary's Chapel in May. (We anticipate the Baccalaureate Service, which is attended by the graduates on a voluntary basis, to become an annual event.) We had a community service at the Emmitsburg July 4th celebration. We aided in providing pastoral services to the Citizens and Montevue nursing homes, funded the Vacation Church School, provided some funds to the Frederick County Religious Coalition of Churches, and helped needy transients make their way through town.

We anticipate 1994 to be another active year. Our primary event will be a CROP walk next spring. As some of you may know, the CROP walk is a national program sponsored by the Church World Service, with the funds going to combat world hunger. What you may not know is that 25% of the funds may go to a bona fide community hunger program. Of course, we will designate our local Food Bank at the Seton Center as our recipient of these funds. We will be telling you more about this effort in future publishings and hope that you all will participate. Incidentally, if you would like to take part in the organization of this walk, let either your pastor or me know - we need your help.

Incarnation UCC News

The Incarnation United Church of Christ in Emmitsburg has called Stephen Hastings as its new minister. Steve, his wife Jill, and their two children, Lauren and Damon, moved into the parsonage in Emmitsburg in August. Steve was the interim pastor at Trinity Reformed UCC in Scottdale, PA, for 1991-1993 while completing his Master of Divinity degree at the Pittsburgh Theological Seminary. A native of Sewickley, PA, Steve graduated from Towson State University in Baltimore in 1979 with a degree in Physics. He served in the Navy for several years and was stationed in Portsmouth, NH, where he met and married Jill, who was then teaching home economics. After leaving the Navy Steve attended graduate school at Dartmouth College, majoring in environmental

planning. He then worked as an economic development planner in northern New Hampshire and later as a community planning consultant in Vermont. The Hastings family enjoy outdoor activities and classical music, both of which they try to incorporate into the life of the church. Steve and Jill recently led a church group on an overnight "fall foliage" canoe trip on the Potomac. Lauren, age 8, recently played her violin in church accompanied by her father on the classical guitar.

The congregation of Incarnation UCC, located at 124 West Main Street, invites anyone looking for a church home to come worship with them at 10:30 on Sunday mornings. Incarnation has also started a new Children's Sunday School program that meets at 9:30 each Sunday morning. The class is taught by Jill Hastings. Younger and older children alike join

together as a "family cluster" to learn the lessons and responsibilities of living in the caring community of Jesus Christ. For further information please call Steve or Jill Hastings at 447-2270.

ATN

Associated Therapy Network, Inc.

Individual, Couple, & Family Therapy

2 E. Main Street, PO Box 230
Emmitsburg, MD 21727

(301) - 447 - 3346

Director - Mary Lynne Ziegler, L.C.S.W.

CORRESPONDENTS

Historically, the town has connections with many of the smaller surrounding settlements through family, friends, and churches. The idea behind this column is to keep in touch with our neighbors. We are looking for volunteer correspondents from St. Anthony's, Zora, and Tom's Creek areas. We are also looking for a correspondent from Emmitsburg. If you are interested please contact us at 447-6275.

ROCKY RIDGE

by Emma Keeney (447-2185)

A well attended Halloween party was held at the Rocky Ridge Fire Hall on Sunday evening, October 31. Delicious refreshments were served, and the Haunted House was enjoyed by all. Costumes were judged in several categories and the following were winners: 6 years and under: Prettiest - Lacey Wolfe; Ugliest - Tommy Downs; Scariest - Randy Thompson; Most original - Andrew Eaves. Ages 7 to 12: Prettiest - Kristen Gabin; Ugliest - Jamie Weddle; Scariest - Jason Stottlemeyer; Most original - Glenn Eaves. Ages 13 & up: Prettiest - Jerry Free; Ugliest - Sherry Osborne; Scariest - Ronnie Hahn; Most original - Isabel Mathias; Overall prize - Sherry Osborne.

The Rocky Ridge Church of the Brethren will be having the following activities in December:

Dec. 5 - Social at 5:00 p.m. followed by a program at 7:00 p.m.

Dec. 12 - Candlelight service 7:00 p.m.

Dec. 16 - Caroling 7:30 p.m.

Dec. 18 - New Family Project 9:00 p.m.

Dec. 19 - Christmas program 7:00 p.m.

The Mt. Tabor Lutheran Church (Rev. James Russell, pastor) and the Mt. Tabor United Church of Christ (Rev. Rosemary McCombs Maxey, pastor) have scheduled the following activities:

Dec. 18 - Christmas party for members of Mt. Tabor church and Sunday school at the activity building, 7:00 p.m.

Dec. 24 - Christmas Eve service at 7:30 p.m. will be held in the church with Linda Shields as the director.

Dec. 24 - Pastor James Russell will conduct Christmas Eve worship and Holy Communion at 9:30 p.m.

Dec. 26 - Pastor Rosemary McCombs

Maxey will have worship and Holy Communion at 9:30 a.m.

Happy birthday to Carl Setherly, Dec. 12, and Isabel Mathias, Dec. 29.

Charles Keeney, Sr. underwent open-heart surgery Nov. 10 at York Hospital. A triple bypass operation was performed. He is recuperating nicely at his home in Rocky Ridge.

COMMUNITY NOTES

REVIEW by Linda Postelle

"The Civil War Era" show opened in HER STUDIO GALLERY, on November 14. This is a group show representing various mediums. Each painting, sculpture, or photograph depicts some phase of the 1860's. Wonderful paintings of groups of Confederate or Union Soldiers are interspersed with tranquil hillsides, old stone houses, trains and station, taverns, and civilians.

Jeanne Fout has immortalized her husband's civil war rifle by painting it full size. This painting is entitled "A Longrifle by John Sheetz" and is displayed with a magazine article explaining the history of the rifle. Other paintings that offer written details explaining their historical significance are "North/South" and "Old Tin Trunk" by Bernice Duvall. Her style has won her national acclaim over the past several years. Connie Woolard's lithograph print, "The Tavern at Great Falls," is very striking with the old white building reflecting in the canal. Shelley Wilson's "First Blood" depicts the bloodshed during a Baltimore riot on April 19, 1861. This watercolor is unusual in composition and very moving in subject matter. No Civil War display would be complete without a painting of General Robert E. Lee and his horse, Traveler. Sherry Kemp has captured both in a beautiful pastel portrait titled "Marse Robert." Paintings of the troops in many poses have been done by artists William Moser, Philip Wasson, Robert Morrow, Edwin Appel, Charlotte Bakey, Sue Suran, and Chris Heyse.

Three artists have chosen sculpture as their medium to depict the Civil War. Dennis Sherald is displaying his pair of bas relief plaques vividly showing the North and South in the midst of battle. Nancy Coblenz Craig brings Abe Lincoln to life as well as a Confederate and a Union soldier. Nancy's beautiful characters carry her own signature style. Each piece is a one-of-a-kind creation. Bettie Roby offers a charming bronze sculpture of General Longstreet on his horse.

This show runs through December 19, 1993.

HER STUDIO GALLERY, 304 East Main St., Emmitsburg, is open Fridays, Saturdays and Sundays, noon to 8:00. For further information call (301)447-2866.

QUEEN COMPETITION

The Winner's Circle Queen contest was held at the Community Center recently. Competition was held in three areas: Modeling with Interview, Strut marching, and Parade Majorette twirling.

Tiny Miss age group winners were: Queen, Melissa Mohle of Gettysburg, age 5; First runner-up, Jessica Cashman, of Gettysburg, age 5; Second runner-up, Jennifer Cashman of Gettysburg, age 4.

Little Miss age group winners were: Queen, Erica Shields of Gettysburg, age 7; First runner-up, Daphne May of Fairfield, age 7.

Junior Miss age group: Queen,, Valentina Mohle of Gettysburg, age 11; First runner-up, Brandi Kreitz of Fairfield, age 11; Second runner-up, Jennifer Myers of Gettysburg, age 12.

Senior division: Queen, Sandra Mercer of Thurmont, age 16; First runner-up, Tina Renoll of Aspers.

REMINDER

Articles, notices, and announcements due Dec. 18, 1993. Space is in demand so contact paper sooner for advertisements.

Thanks, and happy holidays.

BULLETIN BOARD

(Continued from page 1)

**MSM SINGERS PRESENT
ANNUAL PROGRAM**

The Mount Saint Mary's Singers present their annual Christmas Dessert Theatre on December 2nd, 3rd, and 4th at 8:00 p.m.. This year's production is entitled **THE SPIRIT OF CHRISTMAS**. All performances are held in the upper auditorium of Flynn Hall on the campus of Mount Saint Mary's College.

Tickets can be purchased in advance by calling Mrs. Vaughn at the Department of Visual and Performing Arts between 8:00 a.m. and 4:00 p.m. at (301) 447-5308, or Melissa Conroy at (301) 447-5049 after 4:00 p.m. Prices are \$8.00 for adults and \$5.00 for students.

**CHRISTMAS CANDLELIGHT
CONCERT**

The MSM Singers present their annual Candlelight Concert in the Chapel of the Immaculate Conception, Mount Saint Mary's College, on Sunday, December 12, 1993, at 4:00 p.m.. Admission is free. Come and get caught up in the joyous spirit of the Holidays by joining us in an afternoon of sights and sounds of the season. A free-will offering will be taken.

BINGO BINGO BINGO . . .

At the Emmitsburg Ambulance Company. Doors open at 6:00 p.m.. Early Bird at 7:00 p.m.. All are invited to come out and play!!

**COUNTRY DANCING FOR
ALL . . .**

Every Tuesday night at the Emmitsburg Ambulance Building. Dance lessons are given from 7:00 p.m. to 8:00 p.m.. Open dancing held from 8:00 to 10:00 p.m..

Adult \$3.00. Kids under 12 FREE.

Come on out and slap some leather.

Yeeee-Hawww!

"I used to be able to work hard and make ends meet. Trouble is these days is that someone is always moving the ends."

(Quilters continued from page 5)

supervisors, machine operators, and product assemblers. The rate of pay is poor but the therapy is invaluable.

Since 1987-1988, when Olive Duble and Isabel Mathias initiated the first quilting job, 52 quilt covers have been made. These were given to Heartly House and to families suffering from fire loss. Two antique quilts have been repaired by the group, and several quilts have been sold at raffles. Proceeds from the sales were donated to the Lutheran and UCC churches.

The quilters have also sponsored Christmas Greens workshops, Shrove Tuesday doughnut days, and open house for St. John's' preschool children. Mary Ellen Cummings, "Inspector 13," would like to thank all for their support.

**HOLIDAY OPEN HOUSE**

Dec. 4, 5 & 11,12
Sat. 7 a.m. to 5 p.m.
Sun. 10 a.m. to 5 p.m.

Maine Balsam Wreath

Lrg. Selection Evergreen Wreaths

Live Christmas Trees

Cut Greens & Holly

Apples, Squash, Preserves & Relishes

Open House Special

Cider - \$1.50 gal.

(Limit 5 gal. per family)

REGISTER FOR DOOR PRIZE

Holiday Gift Suggestions, Gift Certificates, Decorated Baskets of Apples, Large & Small Apple Racks for Decorating, Rowe Pottery, Garden Statuary.

Complimentary Refreshments
while you shop.

One-Half Peck Apples
Free w/ this ad.

**Crystal Valley
Realty Company**

Crystal L. Gauss
Broker

SALES

1 Ac.+/- Building Lot - \$30,000

Fjordlea Retreat - \$179,000
24 ac+/-, Pre Civil War Log home w/ pond and trout streams. Beautiful setting just over PA line. Owner financing. Owner/Broker.

Pre Civil War Country Home
9 ac+/- Beautiful setting needs cosmetic restoration, new oversized 2 car garage w/loft for artist studio or rental. - \$179,000

Townhouse - \$91,000
2 BR, 1 1/2 B, 4 years young.
Walk to historic downtown
Emmitsburg.

RENTALS

Office/Retail space
Historic Main Street location.
Sec. deposit required. Call Crystal Valley Realty - 447-2222

Ocean City, MD
2 & 3 bedroom Condos w/pool
near Boardwalk. Sleeps 6 to 8.
For information call 447-2222

Ocean City, MD
Bayside T.H. w/pool. Sleeps
12. For information call
447-2222.

Emmitsburg's Historic District
1, 2, and 3 bedroom apartments.
Sec. Deposit required. No pets.
From \$375 per month. Call
Crystal Valley Realty - 447-2222.

Emmit House
601 W. Main St. PO Box 128
Emmitsburg, MD 21727

447-2222

PUBLIC AUCTION

OF VALUABLE REAL ESTATE
with a stream running through the yard

ABSOLUTE

NO MINIMUM BID AND NO RESERVE

The below listed property will be sold to the highest bidder, regardless of price, with no minimum bid and no reserve. Property is being sold to settle the estate of the late Lucy Stouter. Property is located at 17070 Annandale Road, Emmitsburg, MD. Property is better described in liber 455 Folio 497 of the land records of Frederick County, Maryland.

SATURDAY DEC. 11, 1993

1:00 P.M. on site

Improvements: Consists of a log-type home with a large eat-in kitchen, living room, large bathroom, and dining room. Second floor contains two bedrooms. Home is heated with electricity and has a nice wood stove on the first floor. Property also has a storage shed and a house-like structure at the front of the log home which could be used for storage, workshop, etc. Buildings are situated on 1.50+/- acres. Property has a well and septic tank. A stream runs through the property.

TERMS AND CONDITIONS: Property with improvements are sold as is, where is, without warranty expressed or implied. A non-refundable down payment of \$3,000 in cash, cashier's check, or certified check. Utilities and land taxes will be prorated. Purchaser to incur all cost associated with transfer of title. Closing to occur within 45 days. Auction conducted by authority of Paul Stouter, Personal Representative of the Lucy Stouter estate.

John D. Compton, ISA, Auctioneer
Full-time Auctioneer/Appraiser
Licensed and bonded.

**J.D.
Compton
Auctioneering**

13833 Rockdale Rd. Clear Spring, Maryland 21722

301-582-0727

NEW EQUIPMENT INSTALLED

Andy Stevens of Emmitsburg Motors, S. Seton Ave., Emmitsburg, recently announced the installation of a Hunter Engineering computerized wheel aligner. It's one of the first systems of its type used in this area.

The system uses the latest in microprocessor computer technology. All alignment readings are displayed on a CRT (cathode ray tube) screen, similar to a TV screen. The aligner automatically compares vehicle specifications against the actual condition of the vehicle, and displays the difference on the screen. During vehicle adjustment, special displays on the screen show the operator exactly how much adjustment is required to bring the wheels within specifications. It's all automatic. The system even checks itself to see if everything is okay each time it's turned on.

The new aligner also features the "total alignment" concept which relates all four wheels to a common vehicle centerline. The end result is a degree of accuracy, ease of operation, and dependability not available with a conventional wheel alignment system.

J.D. Walter & Co. Inc.

Established in 1937

**Building Cleaning
& Restorations**

Masonry, Stucco, Manufactured
Veneer Stone, Pressure Washing
Sandblasting & Waterproofing

Distributor for
Eldorado Stone and Formstone

FREE ESTIMATES

1-800-448-6131

301-447-6131

MIHC 21419

Member of Better Business Bureau of greater MD

WINTERIZE YOUR CAR NOW !



HOLIDAY



**A 4-wheel alignment
\$39.95**

Bring in this coupon!

Take advantage of the new HUNTER UNDERCAR PROGRAM.

*Greg sez,
"Don't be steered wrong
over the holidays."*



*"All of us at Emmitsburg Motors
thank you for your patronage
and wish you the happiest of
holidays."*

130 South Seton Ave., Emmitsburg, MD 447-CARS

Good until December 31, 1993

The Emmitsburg Regional Dispatch
10635 Harney Road
Emmitsburg, MD 21727

CR-SORT

U.S. Postage
Paid
Emmitsburg, MD
Permit No. 47
Zip Code 21727

Resident