

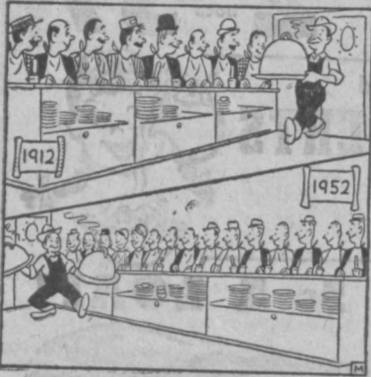


'Know-How' Pushes Farm Production Each Farm Worker Feeds 15 People

Modern "know-how" is enabling farmers to produce twice as much per worker as their grandfathers did a generation ago.

Forty years ago, each farm worker produced enough crops to feed eight people. Today he produces enough to support 15 people. In 1912, 35 per cent of the nation's population was on farms. Today less than 15 per cent of the people live on farms.

Farm economists point out that while this record is good, it will have to be improved in the years ahead. With the population increasing at the rate of 2 1/2 million a year, Census Bureau experts esti-



mate there will be 190 million people to feed by 1975. This means an ever-increasing demand for foods and fibers. This increased farm output must be produced on existing acres, for there is virtually no new land to put into crops.

The key to this increased farm output is the greater use of fertilizer. The U. S. Department of Agriculture reports that 25 per cent of our total farm production is directly due to the use of fertilizers. This will increase in the years ahead. As crop yields per acre go up, production costs per unit go down, giving the farmer a higher net income per acre.

Grass Silage Use Growing, AD Says

The United States Department of Agriculture reports a rapid increase in grass silage making during the past few years. The increase has been from 1.5 million tons in 1944 to eight million tons in 1951, when latest figures are available.

U. S. D. A. gives the following three reasons for the rapid growth:

1. Increased acreage and yield of grassland crops.
2. Need for preserving more and better feed for livestock.
3. Better methods of harvesting, storing and feeding grass silage.

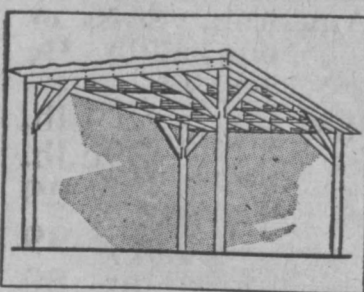
All grass silages properly made from fresh green crops, or with dry materials added, will provide enough carotene, if fed liberally, to produce milk with a good yellow color and a high vitamin A content. Wilted silage will also contain enough carotene for the production of high vitamin A milk, if properly made from an early-cut crop.

Maximum utilization of pasture and low-cost grass silage will provide the lowest feed cost. Grass silage with a moderate moisture content (65 to 75 per cent) made from forage cut at an early stage of maturity will come nearest meeting all the essential requirements of such a program, U.S.D.A. reports.

Asphalt Spray

The University of Illinois reports that spraying thin asphalt coating over the soil after seeding stops soil from washing while seedlings develop. Tests show the asphalt breaks down with one year, and has no bad effect on soil.

Sun Shades



Shade is important in bull lots and small fields where there are no trees. This type structure is easy to build and will offer animals adequate shade during the hottest part of the day. It should be constructed out of material heavy enough to stand rubbing and pushing. Instead of metal, some farmers use straw and like material for the roofing.



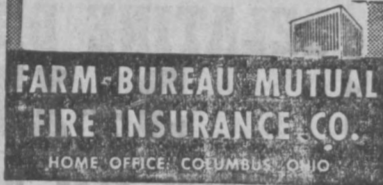
FIRE!

No one ever expects a fire in his home! Are you well protected against this loss? You need insurance to at least 75% of full value against fire and lightning... plus equal coverage for wind, explosion, aircraft, hail and other hazards.

It's sound business to guard your investment with Farm Bureau's comprehensive protection. Check today... call —

J. Alfred Heltebride

FRIZELLBURG, MARYLAND
Phone: Westminster 924W1
Taneytown Office 5141



THE REINDOLLAR CO.
TANEYTOWN, MD.
Phone 3303

9-17-tf

When in Need of

Better and More Comfortable Vision it is suggested that you visit the Professional offices of

DR. ARTHUR G. TRACEY, Optometrist
HAMPSTEAD, MARYLAND.

Write or telephone Hampstead 6011 for appointment

TUESDAY	THURSDAY	FRIDAY	SATURDAY
9 to 12 a. m. 1 to 5 P. M.	9 to 12 A. M. 1 to 5 P. M.	9 to 12 A. M. 1 to 5 P. M.	9 to 12 A. M. 1 to 5 P. M. 6 to 9 P. M.

CLOSED ON MONDAYS AND WEDNESDAYS ALL DAY

11-7-tf

CALENDARS

Now is the time to order your 1954 Calendars for December delivery.

See our line of Samples. Make your selection and place your order with us.

THE CARROLL RECORD CO.

8-21-tf

Taneytown, Md.

THINGS TO TALK ABOUT
BY FRANKLIN J. MEINE
Editor, American Peoples Encyclopedia

RECENT MEDICAL RESEARCH INDICATES THAT YOU SHOULDN'T WORRY NEARLY AS MUCH ABOUT HOW FAT YOU ARE AS ABOUT HOW LONG YOU ARE FAT.

Soil conservation is now considered so important that 84% of the agricultural land in the United States has been brought into soil conservation districts.

9-17-tf

PUBLIC SALE

I, the undersigned will sell at public sale on the premises, 2 miles from Taneytown, Md., on Robert Mill road or Stump Town, on

SATURDAY, NOVEMBER 14, 1953,
at 12:30 sharp, all of the following:

FARM MACHINERY

New Idea heavy duty hay loader, binder, corn planter, mower, spring-tooth harrow, peg harrow, cultipacker, corn sheller, 2 wheels for drill, corn binder, barshear plow, 17-tooth harrow, etc.

HOUSEHOLD GOODS, ETC.

(Porch chairs), (porch glider), coal oil stove and pipe, victrola, 2 radios, 2 beds, 2 antique sinks, clocks, bureaus, chest of drawers, one antique chest, one safe, stands, all antique; one dresser and 6 chairs, 3 rockers, trunk, sleigh bells, lot of antique dishes, bowls, cake dishes, gobblots, pie dishes, etc., Rayo lamps, glass lamp, 60 jars of fruit of all kinds; pictures and picture frames, strawberry crates, egg crates, large crocks, gallon pots, 2 electric irons, 1 trivet, hot plate, milk cooler, mail box, butchering equipment, old iron cook pot, saws, chunk stove and pipe, cream separator, chick stove, antique kitchen cupboard and many other articles too numerous to mention.

TERMS—CASH—No goods to be removed until settled for.

MRS. RAYMOND HESS.

CHARLES ROOP, Auctioneer.
CARL HAINES, Clerk.

10-29-3t

Hospitalization Insurance

New family and Individual plans. Pays up to \$1500. for hospital room and board in addition to miscellaneous expenses while in Hospital up to 100 days for each accident or sickness. Also pays surgical fees up to \$200.00. We have a plan to fit your pocket book. New low rates. GET THE FACTS. See—

ROBERT L. ZENTZ, Agent

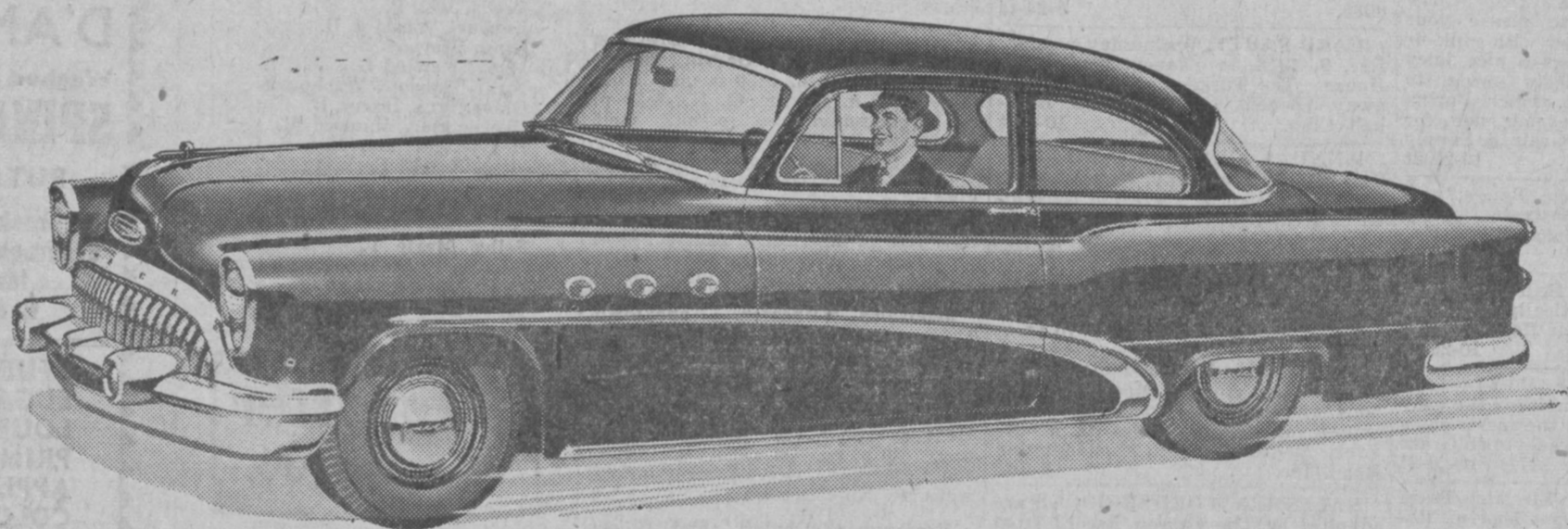
Uniontown Road. Taneytown, Md. Phone 5301

11-5-4t

Every state in the Union boasts one hotel that's head and shoulders above all others. Here in our state, it's Baltimore's Lord Baltimore Hotel.

MARYLAND'S FINEST ADDRESS
LORD BALTIMORE HOTEL

7-10-52t



You're in the driver's seat

for only

\$ 2277.88 *

Today's local delivered price of the **BUICK SPECIAL**

2-Door, 6-Passenger Sedan
Model 48D (illustrated)

*Optional equipment, accessories, state and local taxes, if any, additional. Prices may vary slightly in adjoining communities due to shipping charges. All prices subject to change without notice.

IT'S TRADE-IN TIME FOR A BETTER DEAL

Want the top allowance on your present car—and a great buy in the bargain? Come in and see us for the happy news—now.

It's your money, of course—but we'd like to see you make the most of it.

That's why we publish the price of the big Buick SPECIAL here—to make Point #1: you can buy this great performer for just a few dollars more than the so-called "low-price three."

But Point #2—the smart point—is this:

When you put up those few extra dollars for the Buick pictured here, you're in the driver's seat of a lot more automobile.

You boss extra power—more satisfying power—walloping Buick Fireball 8 power—highest ever found in a Buick SPECIAL.

You get extra room—a lot more comfortable room—real, man-sized, 6-passenger room—as much room as you get in cars costing hundreds of dollars more.

You enjoy extra satisfaction—more solid satisfaction—in the ride of this big, broad,

road-steady traveler that's cushioned by coil springs on all four wheels, and engineered with all the other costly features of the Million Dollar Ride.

And, speaking of extras—here you get, at no extra cost, a long list of standard equipment that most other cars at or near the price of this Buick charge you for, as "extras" on the bill of sale.

So, as we said—it's your money—and it's your move.

If you're aiming for the driver's seat of a hard-to-beat buy—for a lot less than you think—come in and see us soon.

MILTON BERLE stars for BUICK—in the BUICK-BERLE SHOW on TV Tuesday evenings. Also, every Saturday, tune in The TV Football Game of the Week—a "GM" Key Event

THE GREATEST
BUICK IN 50 GREAT YEARS

WHEN BETTER AUTOMOBILES ARE BUILT BUICK WILL BUILD THEM

THE W. H. DAVIS COMPANY

31 WEST MAIN STREET

Phone 1207

WESTMINSTER, MARYLAND

WELFARE BOARD TO LICENSE HOMES FOR CHILDREN

In recent months several children in Maryland have died in boarding homes. Because of the growing concern of many people and a recent ruling of the Attorney General, the Carroll County Welfare Board has announced that all homes where children boarded away from their parents must be investigated and secure a license. Children are not capable of protecting themselves and when parents must for any reason give them up to the care of someone else, the risk of mistreatment and neglect becomes great.

Under this ruling and the intent of the Legislative Policy of the General Assembly, the Carroll County Welfare Board has been instructed to investigate and work on licensing homes boarding children.

All families which take care of and board children who are not related to them must secure a license by applying to the Carroll County Welfare Board, 4 John Street, Westminster, except in the following cases:

When the child has been placed by a social agency such as Children's Aid Society or Welfare Board.

When guardianship or adoption has been set by the Court.

When the child is over 16 years of age.

When the child does not stay overnight, such as day care, summer camps, or vacation.

When the child has been placed in the home by a public agency such as the Court, Mental Hygiene Department.

When children are placed in hospitals, schools, etc.

When the child has been placed by the Court or Probation Department.

The Welfare Board announces that they will be ready to answer any questions about this license and help in making an application for a license. An appointment to talk with a case worker can be arranged by calling the agency offices any weekday between 9 and 4 o'clock.

SALE OF CHRISTMAS SEALS

The 1953 Christmas Seal Sale of the Maryland Tuberculosis Association and its affiliated county associations will begin on Monday, November 16, and continue until Christmas Day, it was announced today by Dr. Russell A. Nelson, president of the Maryland Tuberculosis Association.

In keeping with the policy of the National Tuberculosis Association, no county goals have been set by the Maryland Tuberculosis Association for this year's campaign, the 47th annual Christmas Seal Sale conducted in the United States to raise funds for tuberculosis control work.

However, according to Dr. Nelson, it is hoped that this year's Christmas Seal Sale will exceed that of 1952 when \$413,428.45 was raised in Maryland. Of this total, \$266,078.60 was raised by the county associations and \$147,349.85 by the Maryland Tuberculosis Association in Baltimore City.

Funds raised during the Christmas Seal Sale are directed by the tuberculosis associations toward the prevention, detection, an treatment of tuberculosis through health education, medical research, rehabilitation and social services to tuberculosis patients and tuberculosis detection programs.

Preston G. Coffman, Westminster, was appointed to serve as chairman of this county's campaign activities.

JACK HORN BUYS GUERNSEY SIRE

Jack Horn, Taneytown, Md., has just purchased the young Guernsey sire, May King's Ruben, from Wm. A. Fouché, Taneytown, Md.

This richly bred young bull is out of the well-bred cow, Ruben's Rhoda, that has once been classified Desirable for type, and has production records of 8,766 pounds of milk and 428 pounds of butterfat, made as a senior four-year-old and 9,612 pounds of milk and 458 pounds of butterfat, made as a six-year-old. He is sired by Blakeford May King.

Bread stays soft longest when stored at 75 to 85° F, according to a recent research report. The finding runs counter to the opinion of housewives who keep bread in the refrigerator.

ARMY HOME TOWN NEWS, KANSAS CITY, MO.

Army Pvt. Paul C. Boone, son of Mrs. Helen M. Boone, Route 6, Westminster, Md., recently arrived in Korea for duty with the 25th Infantry Division.

The 25th Infantry was rushed to Korea during the early days of the conflict and took part in some of the toughest battles on the peninsula. It is now undergoing intensive training to maintain its combat readiness.

Private Boone entered the Army in August 1952, completed basic training at Camp Breckinridge, Ky., and arrived overseas last September.

NOTICE

The Mayor and City Council will sit in their office Tuesday, Nov. 10, 1953, from 7:00 to 9:00 o'clock, p. m., to answer questions that the citizens of Taneytown would like to have answered pertaining to the proposed Sanitary Sewer System for Taneytown.

PUBLIC SALE of Lumber

I will sell at my saw mill between Thurmont and Emmitsburg off Route 15 on Hemler Road, SATURDAY, NOV. 14, 1953, at 12 o'clock, consisting of Oak and Poplar Lumber. Boards 2x4, 2x6, 2x8, 1x6x16 Fencing Boards, and other lumber.

CHARLES E. SMITH, Glenn Trout, Auct. 11-5-2t

NOTICE

The Street Sweeper is undergoing repair and will not appear on the streets this week. MAYOR & CITY COUNCIL

PUBLIC SALE

I, the undersigned having rented my farm, will sell at public sale on my farm better known as the Charles Baker farm, one mile east of Taneytown, Md., March 13, 1954, all my Live Stock and Farm Implements.

MELVIN E. BAILEY, Earl Bowers, Auct. 11-20-27&12-5

TANEYTOWN GRAIN MARKETS

Wheat \$1.77 per bu. Corn, old \$1.65 per bu. Barley \$1.00 per bu.

What Are You Trusting?

TRUSTING others is a normal part of daily living. You trust a bank with your money. You trust tradesmen to give you full weight and value in merchandise. They, in turn, often trust you to pay for the merchandise. You trust a neighbor to look after your children or your home. Such trust is humanly rewarding, yet it affords only a hint, a foretaste, of the joy to be derived from trusting God.

The Bible states that man is created in the image and likeness of God. The man of God's creating reflects and expresses only the qualities of his Maker. He is spiritually mental and is incapable of manifesting anything that is not pure and good. Whatever seems to be opposed to purity and goodness is but a manifestation of the false belief that creation is mortal and material. Such beliefs do not stem from God, good, and we have only to reverse them with the spiritual facts of being to come into consonance with reality. When we understand this and live accordingly, we are trusting God, turning with confidence to the source of all good and claiming its ever-presence in our daily affairs.

Reliance on and trust in God gave Christ Jesus power to heal the sick and raise the dead. His absolute trust culminated in his complete triumph over the universal belief in death. He demonstrated the supreme fact that life is not in a material body, but is the manifestation of divine Life, or God. His trust is an example for us all, because he proved that absolute reliance on God is practical and demonstrable.

He said (Matthew 17:20), "If ye have faith as a grain of mustard seed, ye shall say unto this mountain, Remove hence to yonder place; and it shall remove; and nothing shall be impossible unto you."

What do you trust? Do you have confidence that integrity and justice prevail? Do you have faith in the allness of God? If so, then you are trusting God. Such trust, when based on spiritual understanding, transcends fear and delivers one from the insecurity of mortal conditions and circumstances. In the ninety-first Psalm we have this comforting message: "Because he hath set his love upon me, therefore will I deliver him: I will set him on high, because he hath known my name."

Mary Baker Eddy, the Discoverer and Founder of Christian Science, writes in "Science and Health with Key to the Scriptures" (p. 23): "One kind of faith trusts one's welfare to others. Another kind of faith understands divine Love and how to work out one's own salvation, with fear and trembling. 'Lord, I believe; help thou mine unbelief!' expresses the helplessness of a blind faith; whereas the injunction, 'Believe . . . and thou shalt be saved!' demands self-reliant trustworthiness, which includes spiritual understanding and confides all to God."

As we turn trustfully to God and reaffirm the allness and oneness of His creation we shall demonstrate that peace, happiness, and security are the present and eternal facts of being. — The Christian Science Monitor.

OUR BANK WAS BUILT ON SERVICE



... and we're not through "building" yet—won't be, as long as there is something we may do to make your banking connection with us more pleasant and more complete. Why not make our bank financial headquarters for all your money matters?

First National Bank

TANEYTOWN, Md. Member Federal Reserve System (Member of The Federal Deposit Insurance Corporation)

Week-End Specials

- | NOV. 6 | NOV. 7 | NOV. 9 |
|---|-------------------|--------|
| Velveeta CHEESE | 2 lb. box .95 | |
| Campbell's CHICKEN NOODLE SOUP | 2 Cans .33 | |
| Lang's SWEET PICKLES | 1 qt. .39 | |
| CHERRIOS (Crayons Inside) | 2 Large Boxes .49 | |
| Nestle's CHOCOLATE BITS | pkg. .21 | |
| Silver Floss SAUERKRAUT | 2 Cans .33 | |
| Chum SALMON | 1 can .35 | |
| Pillsbury ANGEL FOOD MIX | 1 Box .55 | |
| Rinso SOAP POWDER | 1 box .25 | |
| FRUIT CAKE MIX | | |
| LEMON and ORANGE PEEL, PINEAPPLE, CITRON, CHERRIES and MIXED FRUITS | | |

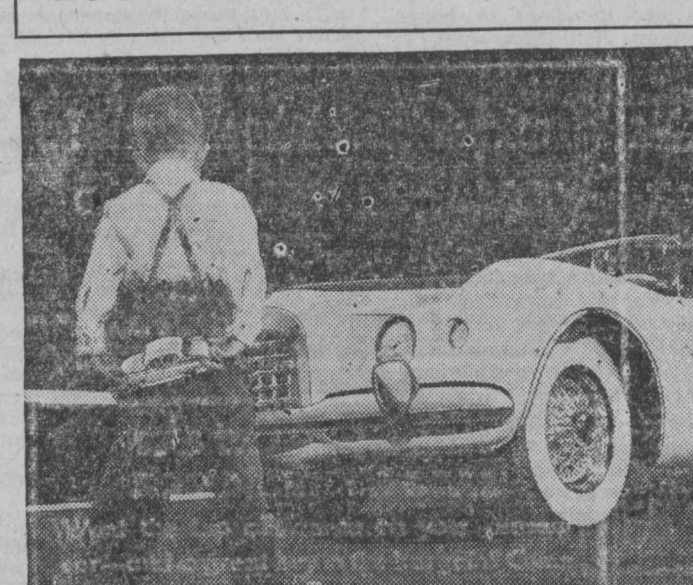
DOUGHERTY'S
GREEN & STAPLE GROCERY
TANEYTOWN, MD.
PHONE 3021

GET YOUR PICK OF Santa's Pack!

 ELECTRIC IRON Nifty model that will iron, but not burn. \$1.98 L25A	 MUSICAL SWEEPER Actually sweeps as it plays gay music. \$2.00 L255	 TOMMY TURTLE His legs swing, tail wags, music plays. \$2.50 L150
LAY-A-WAY YOUR CHOICE WHILE SELECTIONS ARE COMPLETE!		
 TRAP DRUM SET Big 12 piece set. Takes a beating! \$4.95 L45	 GOLDEN TRUMPET Gold plated plastic, over 13" long. Brass hand tuned reed notes. Has case, music, lyre. \$3.98 L51	
 DOUBLE HOLSTER SET Richly decorated, with 2 gold finish pistols. \$4.95 L215G	 SINGLE HOLSTER SET Colorfully decorated with 2-tone rosettes. 98¢ L70	 BUFFALO RIFLE Authentically detailed model. Shoots caps. \$1.98 L8A

Reindollar Bros. & Co. HARDWARE • PAINTS • APPLIANCES ESTABLISHED 1897 Taneytown, Md. TELEPHONE 4564

BOY! WAIT 'TIL I GROW UP!



Five-year-old John Dwight Cervin gazes rapturously at Chrysler Corporation's advanced-design "idea car", the C-200, and gets some ideas of what he will be able to do when he is eligible for a driver's license. The hand-built car is a feature of Chrysler's touring automobile show, "New Worlds in Motion", which has visited 31 cities in the past two years. A million-dollar styling and engineering exhibition, the show is composed of over 100 separate displays which demonstrate the principles that make a modern car tick.

NEW PHONE NUMBER

Having moved to our new place of business our Phone number will be Garage 5474 OHLER'S CHEVROLET SALES Residence 5471 M. S. OHLER 11-5-2t

PUBLIC SALE

I, the undersigned will sell at public sale the following Household Goods, including some antiques on my premises, located in Mayberry, Md., on the following date: SATURDAY, NOVEMBER 21, 1953, at 12:30 o'clock, sharp, the following items: KITCHEN CABINET, 2 utility cabinets, 3 beds and springs; several bureaus, and wash stands, old chest of drawers, 4 plastic covered kitchen chairs, marble top bureau, roll top desk, 2 book cases and lot books, corner cupboard, 3 drop-leaf tables, piano, one overstuffed chair, several odd chairs and rockers, dry sink, room rugs and scatter rugs, iron safe, medium size; metal wardrobe, shot gun, cooking utensils and all kind of dishes, some antique dishes, bed spreads, lot of linens, oil lamps, portable typewriter, sofa slip cover, lot sleigh bells, all kind of tools, lawn roller, typewriter, sofa slip cover, lot seigh bells, all kind of tools, lawn roller, ladders and wheelbarrow, porch swing, grindstone, lawn mower, several gallons of paint, 5 gallon of roof coating, and many other articles. TERMS CASH. NAOMI DODRER. Earl Bowers, Auct. C. G. Bowers & Alfred Heltebride, Clerks. Stand Rights Reserved. 11-5-3t

America
at
peace

This Armistice Day finds no American troops fighting anywhere. May this era of peace continue and the nations of the world learn how to prevent wars, before they start.

(No business will be transacted at this bank on Armistice Day)

The Birnie Trust Company
TANEYTOWN, MARYLAND.
(Member of the Federal Deposit Insurance Corporation)