



PERSPECTIVES IN LEARNING

By Hazel Brown, President Harry Lundeberg School Students Give Opinions

There are so many surveys and opinion polls being conducted today that we often overlook the significance and potential use of the results. Could the findings of polls be used to help us educate and if so which surveys should be considered significant?

girls but that "they are getting better for girls." When asked what was their greatest concern in the future, the responses were "a job or career" and "whether I'll really achieve what I want to achieve." These would appear to be the objectives that youth should have! Perhaps we are underestimating our young people.

Of the students questioned, 96% said they felt everyone had the right to go on to college and 51% stated that they would like to have a college education. 26% had not made up their minds about their desire to continue their education past the high school level.

A question on values may be of interest. When asked if they would cheat on an exam if they had the opportunity, 37% weren't sure and 18% said they would. Only 45% stated they would not cheat.

These are just a few examples of what students feel about current situations and values. It seems that listening to students could give adults a more realistic view of the problems they are facing as parents and educators.

These are just a few examples of what students feel about current situations and values. It seems that listening to students could give adults a more realistic view of the problems they are facing as parents and educators.

TAX—Q & A

Q. I received \$2,000 in cash as a wedding gift. I know I'm not taxed on this amount, but can I add it to my income to determine my sales tax deduction from the tables in the tax form package?

A. Yes. Tax exempt income, such as gifts, social security benefits, life insurance proceeds, etc., may be added to your other income to compute your sales tax deduction from the tax form tables.

Q. I received a bill from the IRS which included an "estimated tax penalty." What does this mean?

A. In general, the law requires that at least 80 per cent (66 2/3 per cent for farmers and fishermen) of the income and self-employment tax shown on a return must have been paid before the return is filed. This payment is due in four installments, and at least 20 per cent (one-fourth of 80 per cent) of the total tax must be paid by the date each

installment is due. If an installment is underpaid, the taxpayer incurs a penalty of six per cent a year on the amount of the underpayment unless he qualifies for relief under one of the exceptions provided by law.

If, when you filed your Form 1040, you did not submit a Form 2210, "Underpayment of Estimated Tax by Individuals," to support your computation of the penalty or to explain why you believe the

penalty does not apply and you still believe the penalty should not be imposed, you should file the Form 2210 now. The form should have been enclosed with your bill. A copy also may be obtained from any IRS office.

Q. I received a lump-sum payment for accrued leave upon resigning from the Federal Government. Is this amount taxable?

A. Yes. Such amounts must be included in your income.

Q. I know that in order to claim my son as a dependent, I must furnish more than half of his total support for the year. Is everything I spend for him considered as total support furnished by me?

A. Generally, total support includes expenditures for providing food, shelter, clothing, education, medical and dental care, recreation, transportation, and similar necessities. However, certain items are specifically excluded from total support. Some of these are life insurance premiums, the purchase of an automobile or other large capital expenditure, Federal, state or local income tax payments, social security tax payments and funeral expenses.

NEWS OF FOOD

NOW YOU SEE IT

If you're like most American consumers, you don't like to buy a pig in a poke, especially when it's for dinner. You like to see what you're eating before you buy it. But, you have to know what to look for first.

1. Check the label. An all-meat frankfurter is not the same as an all-beef frankfurter. Orange drink is not orange juice. The label on a meat package should tell you what the cut is called, its quality, cost, size and price per pound.

2. Check the contents. All food packages must list what's in them, usually with the most used ingredients first.

3. Check the package. Fruit, vegetables, eggs and meat with nothing to hide are likely to come in packages you can see through, such as the new grid-like, bio-degradable food trays from Diamond International that can keep food fresher longer by letting oxygen flow around the food while keeping heat, dirt and moisture out. Yet these food trays are covered by clear

wrap that lets you get a good look at the bottom as well as the top of your purchase, without having to open the carton.

4. Check for freshness. You'll find that the freshest



produce and meat is probably in the store with the biggest turnover, best refrigeration, and most packaged goods, since the wrappings keep food from being bruised, bumped, handled, cut or shriveled. Look at the total package quality top and bottom to make sure you get no hidden surprises after you open the package.

Check for these four buy-signs when you shop and you can be pretty sure you'll know what's getting into you.

Have a hearth



Faced with the threat of fuel shortages, power failures and rising costs of fuel, many families today are installing heat-circulating fireplaces as a "back-up" heat source.

Fuel shortages and rising costs of home heating fuels have re-kindled an interest in the time-honored heat-circulating fireplace as an auxiliary or "back-up" heat source. For unlike conventional fireplaces that simply radiate heat, a heat-circulating fireplace actually heats and recirculates air through two ducts that can be installed to channel warm air in any direction and into two rooms in the house.

The original version of this famous fireplace, used with masonry construction, has been on the market for more than 40 years. The latest heat circulator, introduced just two years ago, requires no masonry footings or foundation. It can be placed directly on a wood floor or against a wall in virtually any room in the house. Heat can be regulated as desired.

By eliminating the need for the massive footings and masonry associated with its earlier counterpart, this new Heatilator fireplace costs but a fraction of masonry models and, better yet, it can be easily installed as a week-end project by the home handyman.

For a free set of information and installation directions, write to Heatilator Fireplace, a division of Vega Industries, Inc., 50 West Saunders St., Mt. Pleasant, Iowa 52641.

THAT'S A FACT

THE MONEY TREE! A NURSERY IN MISSOURI PAID \$51,000 FOR A SINGLE STARKSPUR.



GOT A HEADACHE... FROM GOING THROUGH GROCERY BILLS, CAR REPAIRS VACATION WEEKENDS, KIDS' TOYS, NIGHTS ON THE TOWN, ETC? WELL, IF YOU HAD SIGNED UP FOR THE PAYROLL SAVINGS PLAN WHERE YOU WORK AND KNEW THAT U.S. SAVINGS BONDS WERE WORKING FOR YOU... THE ACHE WOULD SOON DISAPPEAR!



HARE THIS! CONTRARY TO LEGEND, A PACIFIC LEATHERBACK TURTLE WAS CLOCKED AT 22 M.P.H.

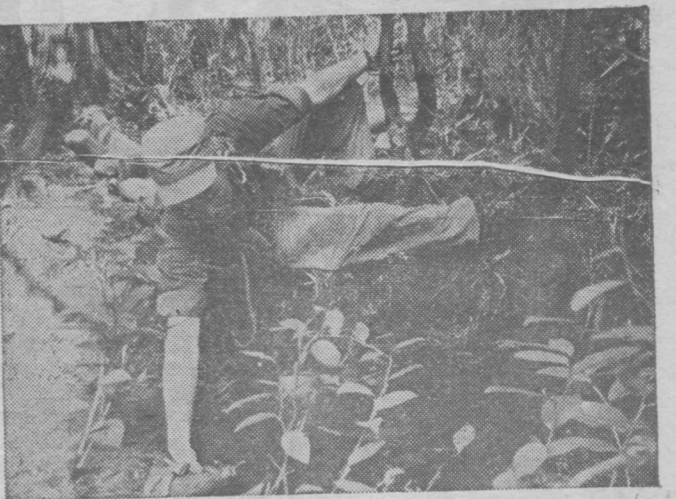
WEATHER REPORT

Temperatures and precipitation for the Emmitsburg District for the week ending Fri., Jan. 3, as reported by the National Weather Service, Mrs. Lucille K. Beale, local observer, were as follows:

Table with columns H, L, Pr. and rows for Sat., Sun., Mon., Tues., Wed., Thurs., Fri.

Publication Available

"Firewood For Your Fireplace", a new publication No. 559 by the U.E.D.A. Forest Service, is now available at the County Agricultural Extension Office in Frederick, according to Kenneth Shifflet, Extension Agent. This reference tells where to buy, how to buy, best woods for burning including heat intensity. Contact the Frederick County Extension Office if you are interested in receiving a copy.



ON PATROL—ROTC Ranger Student Charles B. Ladd, Cornell University, fills canteens for his patrol on a creek during the Florida phase of the Ranger course, Cadet Ladd, who is from Poolesville, Md., is one of approximately 340 Reserve Officer Training Corps cadets who attended the U.S. Army's Ranger training course in lieu of the regular six weeks ROTC Advanced Camp, U.S. Army photo by Don Brower

Advertisement for TOBEY'S 30 BALTIMORE STREET GETTYSBURG, PA. Free Parking While Shopping Tobey's

Some Folks Laugh at cold weather! Advertisement for Texaco Fuel Chief Heating Oil.

Spirited COOKING. An Imperial Meal. Chicken Teriyaki. Recipe including ingredients and instructions.

Ingenious Triumphs Of Chemistry. GOOD NEWS ABOUT SCIENTIFIC ADVANCES. THE ELECTRICAL CHARGE THAT MUSTN'T FAIL.

HARVEST BASKET OF BREAD. Comes the season for giving thanks and food decorations. Recipe for Bread Basket.

REAVES ELECTRIC CO. 402 W. Main St. 447-2497 Emmitsburg

Advertisement for Chlorine and electricity, discussing chlorine production and its uses in various industries.

NOW! at MARTIN'S SEMI-ANNUAL CLEARANCE SALE. Large Selection Of Shoes For The Entire Family. 25% - 75% OFF.

RADIAL STEEL SNOW TIRES PREMIUM GRADES. Free Mounting & Balancing. No Time nor Mileage Limitations on Guarantee.

# BUSINESS AND THE STOCK MARKET

**Tobacco Companies Thrive**  
By Babson's Reports Inc., Wellesley Hills, Mass., January 9, 1975—It was only a few years ago that the prospects for tobacco companies were seriously darkened by cigarette-health alarms and anti-smoking advertisements. The outlook was particularly bleak when, in 1971, all advertising was banned from both radio and television. In spite of these setbacks, fears that the tobacco industry was heading

for a toboggan slide proved to be unfounded. On the contrary, the industry has prospered. During 1973 total consumption of cigarettes advanced at a more rapid rate than did the nation's population, and sales and earnings of the tobacco companies reached record highs. Preliminary figures for 1974 indicate that the tobacco firms posted further all-time record results in spite of the slumping economy and skyrocketing

costs. The outlook for additional gains is generally favorable, and with most tobacco stocks selling at reasonable price-earnings ratios, the Research Department of Babson's Reports recommends that the common stocks of America's leading tobacco companies be retained. For those investors seeking initial representation in the field, we suggest purchase of the common of Liggett & Myers for a high yield and moderate appreciation potential.

**Diversification Aids Results**  
Back in 1964 the U. S. Surgeon General issued a medical report statistically linking incidence of lung cancer to the smoking of cigarettes. Although tobacco interests vigorously disputed such a link—and still do—overall consumption of cigarettes fell sharply. While in more recent years the annual rate of increase in the consumption of cigarettes has returned to its regular 2%-3% range, the large tobacco concerns were spurred by the anti-smoking medical reports to diversify their operations into such varied fields as shipping and transportation, liquors, health products, oil refining, land development, pet foods, and brewing.

Such non-tobacco activities are paying off at a time when tobacco profits are being especially tightly squeezed by soaring costs. For example, a large part of the profits of Reynolds Industries was due last year to a strong turnaround in the company's Seal-land freight transportation

system, while Philip Morris' results benefited from sharp improvement at its Miller Brewing subsidiary. But tobacco continues to be the major source of profits for all of the industry leaders, including Reynolds and Philip Morris.

**Demographic Factors Favorable**  
A projected high level of sales and earnings for the tobacco companies is indicated by the expanding number of people in the heavy-smoking 20-44 age group in this country. Foreign tobacco business has been growing at a faster pace than in the U. S., and it is expected to keep on outstripping domestic consumption—especially in the developing nations. The foreign market is estimated to be three times that of the domestic market. Two other favorable factors in the tobacco outlook are rising levels of disposable income over the longer term and an anticipated tapering off in the rate of increases of local excise taxes. The industry is considered proof against inflation and recession in that smokers have shown a willingness to pay high prices to continue their use of cigarette despite widespread economic uncertainties and a sag in general business.

A recent round of price boosts has brightened prospects for cigarette makers. It has been shown that even a relatively small rise in cigarette prices at retail can significantly improve a company's earnings, helping to meet high labor costs and rising materials prices. Despite controversial health claims, tobacco firms seem quite well situated at this time from an invest-

ment viewpoint. For a free detailed report on our buy recommendation—

Liggett & Myers—write Babson's Reports Inc., Wellesley Hills, Mass. 02181.

# Emmitsburg Chronicle

Established 1879  
Successor to the Emmitsburg Banner, Established 1840  
EMMTSBURG, FREDERICK COUNTY, MARYLAND  
Published weekly on Thursday by COLONIAL NEWSPAPERS INC., 107 South Seton Avenue, Emmitsburg, Maryland 21727.  
Telephone 301-447-2333  
ROBERT B. WENTWORTH, PUBLISHER  
ED PUHL, EDITOR

Copy for Advertisements must be received in this Office not later than Tuesday morning to insure publication in the current week's edition. Advertising rates furnished upon request. Subscription rate, \$4.00 per year in advance. All Communications and Checks intended for this Paper should be addressed and made payable to EMMITSBURG CHRONICLE, Emmitsburg, Maryland 21727.

Entered as Second Class Matter at the Postoffice at Emmitsburg, Md., under the Congressional Act of March 3, 1879.  
Member  
**NATIONAL NEWSPAPER** Maryland-Delaware-D.C.  
Association - Founded 1888 Press Association Inc.

## YOU and YOUR FUTURE

IT'S THE HOLIDAY SEASON. CHILDREN CAN'T WAIT TO OPEN THE PRESENTS THEIR PARENTS HAVE BOUGHT FOR THEM. THESE GIFTS ARE CLEARLY EXPRESSIONS OF LOVE BETWEEN PARENTS AND YOUNGSTERS.

BUT NOT ALL GIFTS ARE SO EASILY UNDERSTOOD OR EVEN KNOWN BY CHILDREN AS SUCH. FOR EXAMPLE, THE LIFE INSURANCE POLICY YOU BUY ON YOUR OWN LIFE FOR PROTECTION OF YOUR FAMILY SHOULD SOMETHING UNEXPECTED HAPPEN TO YOU, OR THE ESTATE-BUILDER POLICY YOU PURCHASE ON YOUR CHILDREN'S LIVES TO START A PERMANENT INSURANCE PROGRAM FOR THEM, THERE IS MORE LOVE BEHIND A LIFE INSURANCE POLICY THAN MANY PEOPLE REALIZE.

JUST AS YOUR DEPENDENTS ARE THE BENEFICIARIES OF YOUR HOLIDAY GIFTS, THEY CAN BE THE BENEFICIARIES OF LARGER, PERHAPS MORE LASTING GIFTS. YOU CAN HELP TO ENSURE THAT THEY WILL ENJOY THE COMFORTS OF A FINANCIALLY SECURE FUTURE BY PLANNING NOW TO HAVE YOUR CHILDREN BENEFIT FROM YOUR LIFE INSURANCE POLICY OR BY STARTING THEIR OWN LIFE INSURANCE PROGRAM.

OF COURSE, THE MONEY YOU PUT INTO LIFE INSURANCE MAY ALSO BENEFIT SOMEONE YOU LEAST EXPECT YOURSELF. THE PREMIUMS YOU PAY TO PROTECT YOUR FAMILY SHOULD YOU DIE, CAN PROVIDE THE RETIREMENT INCOME FOR YOU IN YOUR LIFETIME LONG AFTER YOUR CHILDREN HAVE GROWN AND STARTED THEIR OWN FAMILIES. IN THE LIFE INSURANCE INDUSTRY, WE CALL THESE PREMIUMS DOUBLE-DUTY DOLLARS, AND THE BENEFITS THEMSELVES ARE OFTEN CALLED LIVING BENEFITS. THEY MAKE YOU THE BENEFICIARY OF YOUR OWN GOOD DEED!

YOU NEEDN'T BE RICH TO PROVIDE YOUR FAMILY WITH A GIFT OF LOVE REPRESENTED IN LIFE INSURANCE. YOUR METROPOLITAN LIFE SALES REPRESENTATIVE WILL BE GLAD TO FURNISH YOU, AT NO OBLIGATION WITH INFORMATION THAT WILL SHOW YOU HOW TO PROTECT YOUR FAMILY'S FINANCIAL FUTURE WHILE PROVIDING FOR YOUR OWN FUTURE AS WELL.

## LOOKING FOR A GOOD USED CAR?

SEE OUR GUARANTEED USED CARS

- 1974 Mustang II; 4-Speed Man. Trans.; 8,000 Miles; Radial Tires.
- 1974 Mercury Montego MX 4-Dr.; V-8; Auto. Trans.; P.S.; Power Brakes; A/C; Like New.
- 1973 Ford Grand Torino Squire Wagon; 9-Passenger; AC; R&H; PS; Power Brakes.
- 1973 Ford Maverick 2-Dr. Sdn.; 6-Cyl.; Auto. Trans.; 10,000 Miles.
- 1973 Grand Torino Sport Coupe; V-8; Auto. Trans.; P.S.; Air-Conditioning; Low Mileage.
- 1972 Pontiac LeMans Sport Coupe; V-8; Auto Trans.; P.S.; Excellent Condition.
- 1972 Ford Maverick 6 Cyl.; Standard Transmission; R&H; Good Economy Car.
- 1972 Matador 4-Dr. Sedan; 6 Cyl.; Auto.; R&H.
- 1968 Chevrolet Belair 2-Dr. Sdn.; V-8; Auto. Trans.; PS.

COMPLETE LINE ALLCAR AUTO PARTS BATTERIES & TIRES

**SANDERS GARAGE**  
—AUTO SALES & SERVICE—  
PHONE 447-6151 EMMITSBURG, MARYLAND



**COMMANDER'S VISIT**—ROTC Ranger Student Gregory K. Durham, Fort Valley State College, Fort Valley, Ga., meets Brig. Gen. Warner S. Goodwin Jr., commander of the 1st ROTC Region. General Goodwin visited with several ROTC students from his region while they were training at the U.S. Army Ranger School, Fort Benning, Ga. Cadet Durham is from Macon, Ga. (U.S. Army photo by Don Brower)



**SORE FEET**—With pads on his feet ROTC Ranger student David B. Kalita eases his aching "dogs" during the jungle phase of training at Camp Rudder, Fla. The Fairbanks, Alaska, native is one of approximately 340 Reserve Officer Training Corps cadets who attended the Army's Ranger training instead of the regular six weeks ROTC Advanced Camp. Cadet Kalita attends the University of Alaska. (U.S. Army photo by Don Brower)

## CRAFTY IDEAS

Chances are nobody ever sent you a "batik" card for the holidays! A batik is a piece of dyed cloth, on which the parts not to be dyed have been coated with removable wax. The result: a beautifully patterned piece of fabric—or a very special card that your friend or relative will never forget.

The materials you'll need to make a batik are: Rit dyes, white fabric of cotton, nylon, rayon, or silk, paraffin, construction paper (9 x 12 inches) in assorted colors, rubber cement or white glue, and brushes. You'll also need waxed paper, a double boiler (or a coffee can inside a sauce pan) a candy thermometer, rubber gloves, thumbtacks, heavy cardboard or a wooden frame, iron, paper towels, and a container for the dye-bath.

Here's how to make a batik: Wash the fabric to remove sizing and iron dry. Cut fabric to desired size—5 x 7 1/2 inches for a 6 x 9 inch card. Stretch fabric over wooden frame, or place on waxed paper covered cardboard and attach securely with thumbtacks.

Plan your design and colors. Then, either draw design lightly with pencil on fabric, or place sketch under waxed paper so you can follow it when applying wax. Melt wax in double boiler. Use thermometer and heat wax to 170°F. Fabric should appear darker when wax is applied. If not, wax is not



The final step: constructing the card. Using 9 x 12 inch construction paper of contrasting color, fold center so that it is 9 x 6 inches. Cut "frame" from right side to fit your "batik" and glue fabric in place with rubber cement or white glue. Allow to dry and then glue white paper inside, attaching to back of "batik" picture. Use the right side for writing message.

But whatever your message, it will have extra charm meaning, and artistic appeal because you've added that extra touch of originality!

**WIRE Stereo 100**  
Up to 57 Minutes Per Hour of BEAUTIFUL STEREO MUSIC

**Beer Wine Whiskey**  
You'll Find Everything For That Party Right Here On Our Shelves  
**Village Liquors**  
Ralph F. Irelan, Prop  
"Always in the Best of Spirits"  
Phone 447-2922 Emmitsburg, Md.

**Stud Service**  
BE SURE TO GET YOUR TIRES FIXED NOW FOR WINTER  
—See Us For Prompt Service—  
**Quality tire - S - ervice**  
E. Main Street Emmitsburg, Md.  
Phone 447-2909

## Seasonal Vegetables Make a Tasty, Thrifty Meal



Stuffed eggplant, Italian style, is the center of attention at a family meal. An added attraction could be hero sandwiches.

**NEW YORK (ED)**—Vegetable cookery is an art that even the best cooks seem to find hard to master. Actually, there's no reason to avoid vegetables and every reason to include vegetable main dishes in a well-rounded menu plan.

They're inexpensive, because they're based on the abundance of the season; they're nourishing; they're really easy to do; and they have the delicious advantage of being different.

Some of the best are based on the Italian tradition (thrifty European cooks have always included vegetables in their repertory)—like this stuffed eggplant. Based on an Italian classic, updated for American quick-cooking methods by Progresso kitchens, it should find favor at the dinner table, or as an easy-to-handle main course for a backyard picnic.

**ITALIAN STUFFED EGGPLANT**  
2 Tbsps. olive oil  
2 cans (8 oz.) Progresso Tomato Sauce  
1 clove garlic, minced  
1 tsp. sugar  
1/4 tsp. basil salt and pepper  
2 medium-size eggplants

Add tomato sauce to olive oil. Blend in other ingredients except eggplants; simmer 20 minutes. Reserve sauce. Cut eggplants in half. Cook in salted water until just tender. Drain and scoop out pulp leaving shells about 3/4" thick. Reserve pulp. Fill with stuffing. Place in shallow baking dish. Pour reserved sauce over stuffed eggplants. Bake in preheated 375° oven 30 minutes. Serves 6.

**STUFFING FOR EGGPLANT**  
3 Tbsps. olive oil  
1 lb. chopped chuck  
1/4 cup chopped onion  
Eggplant pulp, chopped  
1 cup Italian flavored bread crumbs  
2 eggs, slightly beaten  
3 Tbsps. grated Parmesan cheese  
1/4 cup chopped parsley salt and pepper  
Brown chopped chuck light in hot oil. Stir in remaining ingredients; mix well. Fill eggplant shells with stuffing.

**You And Grove**  
A hard team to beat!

You and Grove...a hard team to beat! That's because Grove is growing and Grove employees are growing too. Growing in numbers and growing in opportunities for advancement. If you qualify to be part of the Grove team, you'll enjoy good pay and good working conditions. You'll receive frequent merit increases and become eligible for Grove's special job-bid program that provides opportunities for better jobs as they become available. You'll enjoy ten paid holidays a year, up to 4 weeks paid vacation, liberal insurance protection for you and your family...and there's even a full week plant shutdown during deer season. All of this and much more at Grove Manufacturing...the world leader in mobile hydraulic cranes. Get your job application now! Just mail the coupon in this ad or stop by the main gate on Pa. Route 16 between Greencastle and Waynesboro—it's open 24 hours a day. You and Grove...a hard team to beat!

**Apply now—immediate job openings**  
Grove now has openings for numerous entry level jobs, primarily on 2nd shift, such as welder trainees, yard or shop workers. Apply now and EARN OVER \$9,000 YOUR FIRST YEAR!

To: Grove Manufacturing, Box 21, Shady Grove, Pa. 17256  
YES! Please send me a job application form.  
NAME \_\_\_\_\_  
ADDRESS \_\_\_\_\_  
CITY \_\_\_\_\_ STATE \_\_\_\_\_  
ZIP CODE \_\_\_\_\_ PHONE \_\_\_\_\_

An equal opportunity employer

# LOOKING AHEAD

By George S. Benson, President, National Education Program Searcy, Arkansas



**Regional Government**  
A great man once said, "The best government is that government nearest to the people."  
Throughout the entire development of the American system, there has been a justifiable jealousy on the part of local citizens about solving their local problems through officials elected at the local level. The subdivision of the entire United States into States, and the States into Counties and the Counties into cities and townships was all an effort to keep Government close to the people who have to foot the bill for all government activity. The system has worked and the American people have enjoyed the greatest degree of personal freedom in human history. All that has now changed. The vast control of all government, from the smallest entity to the federal level, now rests in Washington. Not in the

hands of elected representatives, not in the hands of the President, but rather in the hands of appointed bureaucrats and bureaucracies which have been created by acts of the Congress or by Executive Order of the President. Done Through Taxation  
This transfer of control has taken place largely through the power of taxation. There is an old adage which said, "He who pays the piper calls the tune." This is more than a cliché, it is a truism, demonstrated by the facts of history, and emphasized during the past fifty years. Today, there is hardly a single function of a local township that is not subject to stringent federal regulations. Before a police department can function, it must meet federal stand-

ards. Before a school system can function, it must meet federal regulations. Before a sewer line can be dug, it must meet federal rules. Before a local community or state government can feed a hungry child, it has to be in compliance with edicts of a Washington bureaucracy. Before a farmer can farm his

land, he had better know the law as laid down by some planner in the Nation's capitol; and business, from the smallest to the largest, is buried under a literal flood of reports and compliance necessities issued from a myriad of federal agencies. Propagandist Always At We-  
How has this happened? There has been in Washington and elsewhere in our country, a small band of propagandists who want to change our American way to a system of Socialism or Communism. People of this type have always been around since the

founding of our country calling themselves by one name or another. Now a step is being taken by the Federal Government which is quite disturbing. It is called, "Regional Council Government." This system of federal control was established by Executive Order 11647, issued by the President and published in the Federal Register February 12, 1972. It was signed two days earlier. At the first reading it appeared to many to be a step in the direction of eliminating a lot of unnecessary travel and red tape involvement on the part of state and local officials. But a careful reading leads me to conclude that it is not even

intended to do that. It divides the nation into ten regions. Each region is controlled by a Council. The members of the Council are composed of Federally appointed officials — none of them are elected by the people. But their decisions cannot be vetoed by state governors or of state legislators.  
For instance, these regional councils have been established with headquarters in almost every instance in the same city as a Federal Reserve Bank. And while the Executive Order speaks eloquently about "the development of closer working relationships between major Fed-

eral grant-making agencies and state and local government and improved coordination of the categorical grant system." But some local officials have found themselves threatened by jail sentences and fines because they did not interpret the federal rules in the same manner as some Regional Director. The number of bureaucrats necessary to administer federal funds, grants and revenue-sharing monies has not decreased... it has increased. There is more confusion and more red tape now, more delay and more heavy-handed tactics than before.

No one even suggested that "their federal highway funds" came from the states and individual taxpayers in the first place and there is no such thing as "federal money." Under threat of forfeiting their Federal Grant they swallowed their pride, sat up and begged, and then did exactly as they were told to do.

When the concept of "federal aid" was first begun, this program warned time and time again that acceptance would ultimately bring a loss of freedom to all who accepted such. We warned again and again that it would not take long for the concept that "federal money" was free, to firmly establish itself in the minds of local officials and taxpayers. We also warned that local autonomy would soon be gone if local officials abdicated their responsibility to levy taxes and locally pay for local services. Every warning we have voiced through the years is now a reality... and it has all been accomplished in the name of "progress."

I think we should make a real fight for the return of authority over local affairs to the officials who we elect for that purpose — our own governors, legislators and county officials.

**LIBRARY HOURS**  
Monday, Tuesday, Wednesday 2:30-5 - 6:30-9  
Tuesday, 10 - Noon  
Thursday, 10-Noon - 2:30-5  
Friday, 2-5  
Saturday, 9 A.M.-12 Noon

**Business Services**  
PATRONIZE our advertisers. These firms are reliable and have proven through the years that they handle only quality products and offer skilled professional service and advice to their patrons.

**ANTENNA WORK**  
Estimates, Installations & Repairs of Antenna Towers & Systems  
**OUR SPECIALTY**  
LOOK TO MYERS' FOR THE BEST IN SERVICE  
**Myers Radio & TV**  
125 E. Main St. - 447-2202  
Emmitsburg, Md.

**Hanover Maternity Shop**  
Complete Line Of MATERNITY WEAR  
Children's Wear to Size 6X  
Lingerie, Leotards, Tights & Trunks — Shower Gifts  
Selva Dance Footwear  
1 Frederick St., Hanover, Pa.

**Coffman Jewelers**  
28 Baltimore St.  
Gettysburg, Pa.  
**OMEGA WATCHES (ORANGE BLOSSOM DIAMOND RINGS)**

**ANTENNA SPECIALISTS**  
for Commercial & Home Installations  
Repairs  
Estimates  
Towers  
**Thurmont Radio & TV**  
206 N. Church St.  
271-2158

**DR. R. P. KLINGER, JR.**  
**Optometrist**  
19 East Main Street  
EMMITSBURG, MD.  
Examined-Glasses Fitted  
Complete Optical Repairs  
**HOURS**  
MONDAY: 6:30 to 8:30 p.m.  
Other Evenings By Appointment.  
**PHONE**  
WESTMINSTER TI 8-8340

**CODORI MEMORIALS**  
Rock of Ages Monuments, Markers  
Mausoleums  
Cemetery Lettering & Cleaning  
100 W. Middle St., Gettysburg  
Phone 717-334-1413

**WILSON Funeral Home**  
EMMITSBURG, MD.  
**Phones:**  
Emmitsburg 447-6244  
Fairfield 642-8642

**"YOUR PEACE OF MIND DEALER"**  
**RANDY'S Pre-Owned Cars & Trucks**  
Fairfield, Pa.

**"FEEDER" CATTLE**  
EVERY Tuesday IS A Feeder Sale

Due to the large response to "Special" Feeder Sales last spring, every week will be a feeder sale.

All types and sizes. Lots of local cattle right off the farm. Cattle sold in order received.

**EVENING SALE**  
FOR YOUR CONVENIENCE AT **Westminster Livestock Auction**  
For a dependable trucker  
Call 848-9820  
Westminster, Md.

**LEGAL NOTICE**  
TO ALL PERSONS INTERESTED IN THE ESTATE OF LORETTA MARY FLORENCE  
This is to give notice that the undersigned Dorothy E. Redding, whose address is 662 Long Lane, Gettysburg, Adams County, Pennsylvania, has been appointed Personal Representative of the Estate of Loretta Mary Florence who died on the 15th day of November, 1974 and that the appointment was made on the 19th day of November, 1974, by the Register of Wills of Adams County, Pennsylvania. The name and address of the Personal Representative's Maryland Agent for Service of Process, filed with the Register of Wills in Frederick County, Maryland is Frederick J. Bower, 100 West Church Street, Frederick, Maryland 21701.

The decedent owned a parcel of land in the Emmitsburg Election District, Frederick County, Maryland and more particularly described as follows:  
BEING an unimproved tract of Mountain Land containing 33 1/2 acres, more or less, located near the west side of Annandale Road, being all and the same real estate described at parcel second in a deed dated September 19th, 1972 from Richard B. Florence, Personal Representative unto Loretta Mary Florence, Dorothy E. Redding and Richard B. Florence, said deed being recorded in Liber 892, Folio 195, one of the Land Records of Frederick County, Maryland.

All persons having claims against the decedent shall file the same with the Register of Wills of Frederick County, Maryland on or before June 27, 1975.  
DOROTHY E. REDDING  
Personal Representative  
FREDERICK J. BOWER  
Attorney for Personal Representative  
100 West Church Street  
Frederick, Maryland 21701  
Phone: (301) 662-5155  
Date of first publication: Jan. 2, 1975-3t

**SNOW DIARIES BY RON**  
A GIGANTIC SNOWSTORM - THE WORST OF THE WINTER - POUNDED THE SOUTHWEST ON FEB. 5, 1964. WINDS UP TO 50 MPH WHIPPED THE SNOW INTO 10 FOOT DRIFTS. IN AT LEAST ONE INSTANCE, DRIFTS HIGHER THAN THE ENGINES DELAYED A PASSENGER TRAIN FIVE HOURS.  
GEE - NO JUNK MAIL!  
TWENTY SIX INCHES OF SNOW FELL ON BORGER, TEXAS - ALMOST ISOLATING THE CITY OF 22,000. MANY CITIES AND TOWNS WERE WITHOUT MAIL FOR THREE DAYS.  
GROOM POP 1200

STRANDED MOTORISTS TOOK REFUGE WHEREVER THEY COULD FIND IT. THE TOWN OF GROOM, TEXAS - POPULATION 600 - DOUBLED ITS SIZE AS THAT MANY MORE TRAVELERS FILLED HOTELS, MOTELS, RANCH HOUSES, ETC.

MANY HIGHWAY ENGINEERS SAY A MIXTURE OF CALCIUM CHLORIDE AND SALT IS THE MOST EFFECTIVE AND PRACTICAL WAY TO MELT ICE AND SNOW ON ROADS DURING THE UNPREDICTABLE WINTER SEASON. **ECOLOGY NOTE:** THE AMOUNT OF CHLORIDES INTRODUCED INTO THE ENVIRONMENT IS REDUCED WHEN CALCIUM CHLORIDE IS MIXED WITH SALT. THE MIXTURE ALSO MELTS MORE ICE AND SNOW THAN SALT ALONE, AND FASTER, BUT EVEN CALCIUM CHLORIDE ALONE WOULD NOT HAVE HELPED TWO CONSTRUCTION SUPERVISORS SNOWLOCKED AT A DAM SITE DURING THE BLIZZARD OF '64. ASR

**WFMD**  
930 am  
1974-75 University of Maryland  
BASKETBALL

**Sure Sign of Value - A-1 USED CARS**  
**ALWAYS GOOD VALUES**  
1973 Pinto 3-Dr. Runabout; Low Mileage.  
1973 Ford Gran Torino 4-Dr.; Air; P.S.; V-8.  
1972 Datsun 2-Dr. Sedan; 4-Spd.; R&H.  
1972 Chevrolet Impala 2-Dr. H.T.; Very Clean.  
1971 Ford LTD 4-Dr. H.T.; Fully Equipped;  
1969 Ford Country Sedan Wagon; R&H; Auto.  
1967 Fairlane 2-Dr. H.T.; V-8; R&H.  
1966 Ford Mustang 2-Dr. H.T.  
1974 Ford F100 Pickup—Low Mileage; Like New.  
**Sperry's Ford Sales, Inc.**  
PHONE 447-6171 EMMITSBURG, MD.

## HOW TO CLOSE A POOL

The more than 86,000 American families that installed swimming pools this year may find themselves somewhat dampened when it comes to closing them down. However, even a pool-owner still wet behind the ears doesn't have to find himself in hot water if he sticks close to these pool-closing problem preventers.  
1. Remove all bulbs and glass components from pool fixtures.  
2. The main switches for all electrically powered pool equipment should be turned off and the fuses removed to prevent accidental starting or storm damage.  
3. A canvas or plastic covering will keep debris out of your pool, but be sure it's strong enough to support anyone who might fall or walk onto it.  
4. Protect any exposed metal by shutting off all supply valves and draining completely all pipes and equipment.  
5. Oil moving parts and give all exposed metal a light coat of grease or oil to protect it from rust.

6. Clean diatomite filters, the type used in most modern pools either by sluicing or spraying the elements.  
7. A good way to make sure your pool won't leave you high and dry when you re-open it is to install a new diatomite filter system with Celite filter aids made by Johns-Manville before you close the pool.  
8. If you find draining a strain, refrain. Many pool owners empty their pools only once a year to inspect pool walls and floors for damage.  
Keep these hints in mind when the pool season is over, and you won't be all wet at the pool.

**GET A DEAL ON THE 1975 CHEVROLET**  
And On OK Used Cars & Chevrolet Trucks  
**WANTZ CHEVROLET INC.**  
Phone 756-6006 Taneytown, Md.  
**COMPLETE AUTO AND BODY REPAIR**  
Service Department Hours  
7:30 A.M.—5:00 P.M. MONDAY—FRIDAY  
5:30 P.M.—9:00 P.M. THURSDAY EVENING  
Sales Department Hours  
9:00 A.M.—9:00 P.M. MONDAY—FRIDAY  
9:00 A.M.—5:00 P.M. SATURDAY

**NOW IS THE TIME FOR YOU TO RELAX Eat Out With The Family!**  
**VISIT YOUR FAVORITE AREA RESTAURANT For a Special Meal and Beverage**

**Rolando Woods Inn**  
Rt. 16 East of Waynesboro At Blue Ridge Summit  
Now Open From 8:00 A.M. Seven Days A Week With Full Beverage Services  
Good Food Prepared In Unique, Pleasing Fashion  
Reservations Will Make Your Visit More Pleasant  
Phone 794-2765  
Weekend Entertainment  
**SOUP And SANDWICHES FOUNTAIN Sundries - Magazines**  
**FAIRFIELD CUT RATE**  
Fairfield, Pa. 17320

**The Palms Restaurant**  
EMMITSBURG, MARYLAND  
**HOME COOKING OUR SPECIALTY**  
**Dinners Daily Specials**  
**Homemade Soups**  
**Pizza - Sandwiches - Subs**  
**CHICKEN - SOFT SHELLS**  
**SPAGHETTI**  
—Carry-Out Service—  
We Serve Your Favorite Beer and Wine  
**HOURS: 6:30 A.M. - 11 P.M. Daily**  
—Closed Sunday—  
**THE PALMS RESTAURANT**  
Emmitsburg, Md. Phone 447-2303, 447-2991

**ALBERT F. WIVELL & SONS**  
CONTRACTOR  
Custom Homes Swimming Pools  
Remodeling Sales and Service  
Excavation Call 447-2218

**BEAT THE RUSH! NOW IS THE TIME TO BUY SNOW TIRES**  
All Sizes In Stock  
**Quality tire - Service**  
Phone 447-2909  
E. Main Street Emmitsburg, Md.

**Soup & Salad Bar**  
TUESDAY, WEDNESDAY, THURSDAY  
11:30 A.M. - 1:30 P.M.  
**\$1.45**  
**TOSS YOUR OWN SALAD SERVE YOUR OWN SOUP**  
New Luncheon Menu  
Sandwiches on Home-Baked Bread  
Don't Miss Our Dessert Cart  
**COZY RESTAURANT**  
Thurmont, Md. Phone 271-7373

In Borneo the people believe they can improve their luck by annually driving evil spirits out by beating a pig and setting adrift a rat.



**Candlelight Wedding For Rosemarie Staub, Kenneth Knox December 7th**



Miss Rosemarie Staub, daughter of Mr. and Mrs. Ernest W. Staub, Keysville Rd., Emmitsburg, was given in marriage by her parents December 7, 1974, to Mr. Kenneth Michael Knox, son of Mr. and Mrs. George Knox, Harney Rd., Taneytown.

The wedding was performed at Trinity Methodist Church, Emmitsburg, with Rev. Walter Bowers and Father Dolan officiating.

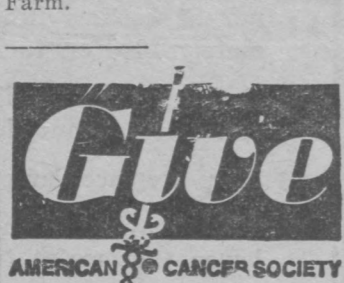
The afternoon ceremony took place by candle light in a setting of white and purple pom-poms, chrysanthemums and pines.

Soloist Miss Bobbie Jean Staub, cousin of the bride, was accompanied on the organ by Miss Hazel Hess.

The bride wore a Princess floor length gown of knit bodice over lace with chantilly lace sleeves and train, designed by Mrs. Donald Myers of Emmitsburg.

Miss Staub carried a white Bible with purple and white chrysanthemums and miniature pink roses. Maid of honor at the double ring ceremony was Miss Ronda Hewitt, Gettysburg, Pa.

Attending the bride were her sister, Yvonne Jean Staub, and Bonnie Fuss, both of Emmitsburg. Miss Shelly



**Ladies Aux. Report Xmas Party Success**

The regular monthly meeting of the Ladies Auxiliary to Emmitsburg Memorial Post 6668, Veterans of Foreign Wars, was held January 2, with President Evelyn Ott presiding. Twelve members were present.

Rita Byard reported on the Christmas party held December 12 for the patients at Victor Cullen Hospital. Fifteen ladies gave the party for the patients, who seemed to be most appreciative. The ladies are looking forward to another visit. A motion was passed to have a Valentine's Party for Raines Cottage, the time and date to be set up with the Director, David Know. At this time we will take a set of clothes for each lady in Raines Cottage.

President Ott thanked all of the ladies who participated in the party for the mental patients and also the ladies who helped make our Christmas Banquet a grand success, especially Gwen Topper, who chaired the banquet.

President Ott announced that she would be in touch with Gloria Martin concerning the Mother's March for the March of Dimes. January is the month the ladies collect for this charity.

Catherine Hodge collected many good works for Community Action.

A motion was passed to purchase an American Flag for Mother Seton School for our Loyalty Day Program.

The name of Susan Glass was drawn for the door prize, but she was not present.

The next meeting will be held Feb. 6, 1975.

**TUESDAY NIGHT MIXED LEAGUE (Rainbow Lanes)**

	W	L
Scatter Pins	44	24
Gearhart's Electric	41	27
Ramblers	38	30
Bell's Snack Bar	37	31
Outcast	36	32
Pinbusters	33	35
Rainbow Nite Owls	22	46
Dreamers	21	47

High team set, Bell's Snack Bar, 1601; high ind. set and game for women, Mary Wetzel, 348, 127; high ind. set and game for men, Jim Hahn, 425, 159.

**HOLY COMMUNION**

The Sacrament of Holy Communion will be administered in Elias Lutheran Church Sunday, January 12, at 10:30 and 4:00, to mark the First Sunday in Epiphany and the Baptism of Our Lord.

**THAT'S A FACT**

**WANT TO REACH... THE END OF THE RAINBOW? JOIN THE PAYROLL SAVINGS PLAN AND AUTOMATICALLY A SPECIFIED AMOUNT WILL BE SET ASIDE FROM YOUR PAYCHECK AND USED TO BUY U.S. SAVINGS BONDS. AND WHEN YOU FIND OUT HOW MUCH YOU'VE SAVED - IT'S LIKE REACHING THE END OF A RAINBOW!**

**WHALE OF A STORY**  
WHALES DON'T REALLY "SPOUT" THE EFFECT IS CAUSED BY HEATED AIR FORCED THROUGH THE LUNGS BEING CHILLED WHEN THE WHALE BLOWS IT OUT, AND THE VAPOR CONDENSES

WATCH THIS AD for

**ONCE-A-YEAR SALE**

Some Items In The Store Already Sale-Priced!

Don't Miss This Special at

**Myers' Radio & TV AND RECORD SHOP**

Phone 447-2202 Emmitsburg, Md.

**TOO MANY HEAVY HOLIDAY MEALS**

TRY SOMETHING *Light*

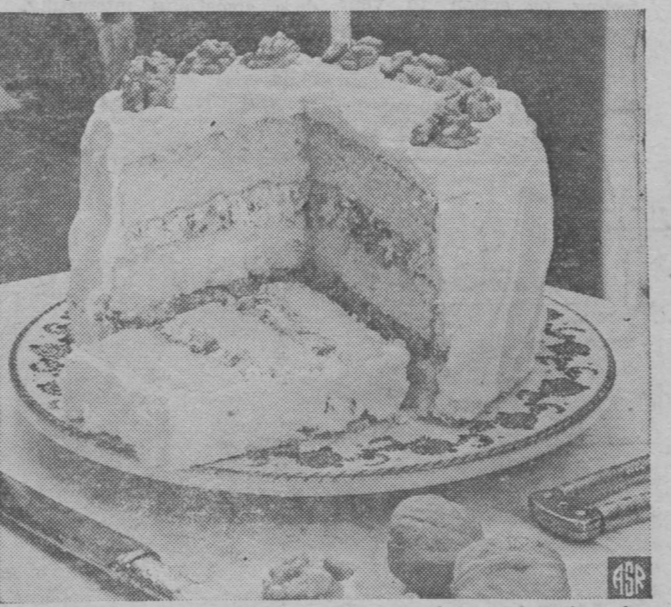
- Crab Cakes
- Fresh Fish
- Imperial Crab

at

**SHAMROCK RESTAURANT**

Thurmont, Md. Phone: 271-2912 or 271-7882

**Lady Baltimore - A Walnut Treat**



The Lady Baltimore Cake has been a dessert showpiece for years. Three tender white cake layers are put together with a filling of raisins, dates and crunchy California walnuts. Perfect for parties, today's contemporary cake version is made with speedy cake and frosting mixes that still give you as elegant a cake as if you'd started from scratch. Developed in the Diamond Walnut Kitchen, this Speedy Lady Baltimore Cake variation is easy to assemble when you use convenient mixes plus California walnuts that come already shelled and nutcracker fresh in clear bags or vacuum cans. If you prefer to crack your own, you'll find plenty of walnuts in-the-shell in cellophane bags.

- Speedy Lady Baltimore Cake**
- 1 package (18 1/2-ounce) white cake mix
  - 1 teaspoon vanilla
- Prepare cake mix as package directs adding vanilla. Pour batter into 3 greased and floured 8-inch layer cake pans. Bake at 350 degrees F. for 20 minutes. Cool layers on wire racks. Put together with Speedy Lady Baltimore Frosting and filling.
- Speedy Lady Baltimore Frosting**
- 2 packages (7.2-ounce) fluffy white frosting mix
  - 1/2 teaspoon vanilla
  - 1/4 teaspoon lemon extract
  - 1/2 cup chopped raisins
  - 1/2 cup chopped dates
  - 2 tablespoons brandy or orange juice
  - 1/2 cup finely chopped Diamond Walnuts
- Mix frosting mix as package directs adding vanilla and lemon extract. To 1/2 of the icing, add raisins and dates that have been soaked in brandy or orange juice. Stir in walnuts. Use as filling between the cake layers. Use remainder of the plain frosting without fruits and walnuts to frost sides and top of cake. Makes one three-layer cake.

**College Credits Outside Classrooms**

The College Board has announced the availability of five new CLEP Subject Examinations, through which interested persons can gain college credit. The new exams are in Introductory Microeconomics, Introductory Macroeconomics, Introductory Micro and Macroeconomics, Calculus With Analytic Geometry, and Introductory Sociology.

CLEP tests are administered in this area on the third Wednesday of each month at Mount Saint Mary's College by the Office of Counseling Services. This month the examination date is January 15. Next month the date is February 12.

In addition to Subject Exams, such as those mentioned above, CLEP offers General Examinations that measure achievement in the liberal arts: English Composition, Humanities, Mathematics, Natural Sciences, and Social Sciences-History.

According to Michael H. Scheerer, Director of Counseling Services at the Mount, the College - Level Examination Program (CLEP) allows students to receive college credits without taking a course.

"Mount Saint Mary's recognizes that many individuals often possess knowledge gained outside the classroom which can be relevant to their academic curriculum," Scheerer says. "That is why we administer the exams and why we accept up to 30 semester hours of CLEP credits."

**THURSDAY NIGHT LADIES' LEAGUE (Rainbow Lanes)**

	W	L
Texaco Stars	46	18
Gay's Gals	41	23
Village Liquors	39	25
The Untouchables	37	27
Morningstar Electric	34	30
Staley Body Shop	25	39
Gearhart Electric	20	44
Shaft Nuts	14	50

High team set, Texaco Stars, 1549; high ind. set and game, Carol Martz, 354, 151.

**DIRECTOR'S MEETING**

There will be a Directors' and Officers' meeting of the Vigilant Hose Co. on Sunday morning, Jan. 12 at 10 o'clock in the Fire Hall. All Directors and Officers are urged to attend.

**Use Classified Ads**

**Factory To You Savings**

**3 SETS OF NEW FURNITURE**

ONE LOW PRICE!

- 4 pc. Bedroom Set
- 2 pc. Livingroom Set
- 5 pc. Dinette Set

\* Save \$140.85 Now \*

**ONLY \$398**

plus Easy Budget Terms

SHOP AND SAVE TODAY

**SHEPLEY'S**

15 Water St. Thurmont - 271-7066

"We Guarantee To Make You Happy"

Serving Happy Families Since 1965

Furniture - TVs - Stereos - Appliances

**Joan Hatter Weds Paul Schreiber In Double Ring Ceremony December 28**



Miss Joan Annette Hatter, daughter of Mrs. Mary Hatter, Anandale Road, Emmitsburg, Md., and the late Mr. Ralph L. Hatter, and Mr. Paul Emil Schreiber, son of Mr. and Mrs. Helmut Schreiber, Bethlehem, Pa., exchanged marriage vows Saturday, December 28, 1974, in Trinity United Methodist Church, Emmitsburg. Reverend Walter Bowers officiated at the double ring ceremony at 2 p.m., before a Christmas setting of poinsettias and pine.

Mr. Alfred Gilbert, Gettysburg, Pa., organist, accompanied the soloist, Mr. George Bruchey, Keymar, who sang, "A Time For Us, We've Only Just Begun," and "Speak Softly, Love."

The bride, given in marriage by her brother, Mr. Edgar Hatter, was attired in an Empire silhouette A-Line gown in polyester organza with yoke and sleeves of acetate, cotton and nylon cluny-type lace. Her white gown had a full attached chapel train with a wide ruffle of cluny-type lace. Her full chapel length veil fell from a crown of seed pearls and a single fresh gardenia.

She carried a cascade of white gardenias, white roses and stephanthus with ivy streamers.

Mrs. Janet Utz, Emmitsburg, was matron of honor for her sister. She wore a gown of pink polyester crepe trimmed in burgandy velvet and wore a fresh cut flower tiara of pink rose buds, burgandy carnations and ivy to match the nosegay she carried.

Bridesmaids were Mrs. Mary Beth Baker, Edgewater, Md., and Miss Diann Evans of Baltimore. They wore gowns similar to the matron of honor in pink and burgandy.

Mrs. Loretta O'Tiolo, sister of the bride, served at the guest book. Mrs. Freda Bowers and Miss Bobbie Jean Staub attended the gifts. Mrs. Madeline Brown, Thurmont, aunt of the bride, served at the punch bowl, and Mrs. Shirley Brown, Lantz, cut the four-tier wedding cake.

On Friday evening, Mr. and Mrs. Helmut Schreiber gave a rehearsal dinner for 20 guests at the home of Mr. and Mrs. Larry B. Utz, Crystal Fountain Rd., Emmitsburg.

The bride is a graduate of St. Joseph's High School, Emmitsburg, attended Towson College, Towson, Md., and is presently attending Frederick College School of Nursing in Frederick, Md.

The groom is a graduate of Bethlehem High School, Pa., and Dickinson College, Carlisle, Pa., and is employed at Letterkenny Army Depot in Chambersburg, Pa.

After a one-week wedding trip to Williamsburg, Va., the couple is residing in Chambersburg, Pa.

A reception was held in the Church Social Hall for 125 guests.

**What price security?**

When you join the Payroll Savings Plan, all it takes is a little pinch out of your paycheck. Any amount you specify. Money that'll be set aside each payday to buy U.S. Savings Bonds.

You'll hardly miss it. And neither will your paycheck. Join Payroll Savings now. Where else could you get the future at a bargain rate?

Now E Bonds pay 6% interest when held to maturity of 6 years (4 1/2% the first year). Bonds are replaced if lost, stolen or destroyed. When needed, they can be cashed at your bank. Interest is not subject to state or local income taxes, and federal tax may be deferred until redemption.



**Take stock in America.**

Join the Payroll Savings Plan.

**SALE**

**GUYS GALS**

**20-50% 20-50%**

**OFF**

**The Village Shop**

Chambersburg St. Gettysburg, Pa.

Phone 717-334-1340