

Avoid These Well-Intentioned Boners



Some people who visit hospitalized friends and relatives, while hoping to help the patients get well, may make them worse—without knowing it!

Here are a few things you should NOT do:

1. Don't bring exotic things to eat or drink unless you've first asked the hospital or doctor. They know what and when a patient should be fed while he's in his bed.
2. Don't go in to see someone if he already has several visitors. Wait for some of them to leave. Too large a crowd can be very tiring for sick people.
3. Don't be embarrassed about bringing flowers to men as well as women patients. Many hospital staffs have long known that the beauty and vitality of flowers have a positive psychological effect on the morale of many patients that sometimes helps speed recovery.

4. Don't touch a patient's oxygen, intravenous, Miller-Abbot tubes, etc. If this kind of equipment needs adjusting, ask the nurse, who is equipped to handle them.

5. Don't bring any medicines to a hospital patient, not even aspirin or vitamins or the pills he took at home, unless requested to by his doctor or the hospital. You can usually depend on the hospital staff to see that he gets the right medication.

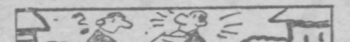
6. Don't visit a hospital patient if you have a cold. His resistance to germs is likely to be low, and he could catch your disease. Instead, send flowers to show you care.

7. Don't bring patients large heavy books. He may be unable to hold them and therefore can't read them until he's recovered!

If you avoid these in-hospital errors, the patient is much less likely to get sick of seeing you!

About 350,000 board feet of lumber were used during construction of each World War II Liberty Ship.

William Penn called wood "a substance with a soul."



People once believed that abracadabra could cure ague, flux and toothache, particularly when suspended from the sufferer's neck by a linen thread in the following form:

Abracadabra
Abracadabr
Abracadab
Abracada
Abracada
Abraca
Abrac
Abra
Abr
Ab
A

A TOTAL TREAT FOR FATHER

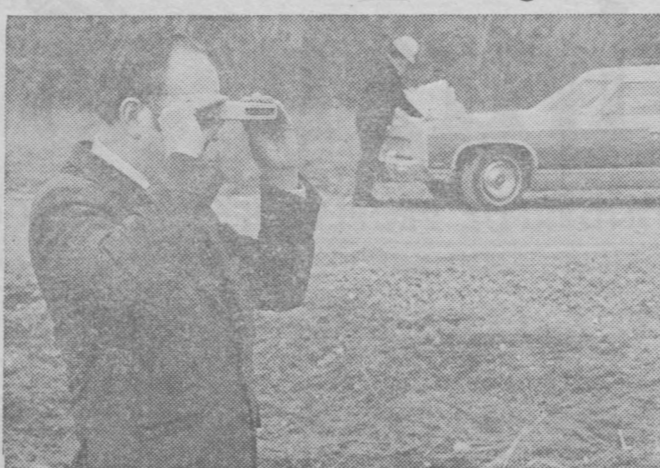
When it comes to counting the ways you're fond of your father, a calculator could come in very handy—particularly if you hand it to him on Father's Day!

A handsome percentage of papas might even consider its usefulness to be almost incalculable!

For one thing, it might make figuring out next year's income tax a little less taxing.

Secondly, he can use it to keep track of his favorite sports star in a number of ways; rack up his record

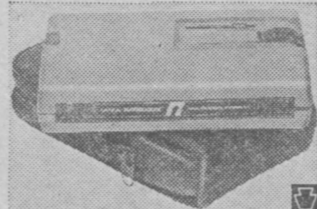
Measure Distance Without Moving An Inch



ROCHESTER, N. Y. — A new pocket-sized device, known as the Optical Tape Measure, produced here, makes it easy for one person to take fast, precise measurements up to 100 feet where it would be impossible with a regular tape measure.

To operate, the user holds the instrument up to his eye and sights on any object in the distance. Next he turns the focus knob until there is only one clear image of the object. At this point, the tape indicator will give a reading of the distance to the object. The instrument has an accuracy rating of 99.2% up to 25 feet, 97.8% up to 100 feet, and carries a five-year warranty.

The use of the instrument by homeowners, handymen, contractors of all types, appraisers, estimators, engineers, decorators, photographers and many others is unlimited. It



reportedly saves not only time, effort and personnel, but money as well. For instance, a contractor using the Optical Tape Measure is much less likely to overestimate or underestimate the amount of material needed for a specific job. That can mean real savings, particularly important in a time of shortages and inflation.

Information on the Optical Tape Measure is available at hard goods stores or from Rangine Inc., Hardware Products Division, 90 Lincoln Road North, East Rochester, New York 14445.

Cable Announces Intention To File

Arthur (Art) Caple announced this week his intention to file for the House of Delegates in District 4B, which represents most of the citizens of Carroll County and a portion of Frederick County.

Speaking to a luncheon audience in Westminster, sponsored by the Citizens for Art Caple Committee, he said that he is uniquely qualified and has been extremely fortunate in that his duties have, over the last ten years, allowed him to work with the judicial, executive, and legislative branches of state government, knowing first hand the process. Caple is currently President of the Maryland Classified Employees Association, representing 32,000 members. His term expires before the September 10 primary and he is not eligible for re-election.

Draft Board To Relocate Office

As a result of further reduction in force within the Selective Service System, the administrative site for Local Board No. 45 will be relocated at 416 Hungerford Drive, Rockville, Md., as of June 30, 1974.

The office hours for the new location will be from 8 a.m. to 4:30 p.m., Monday through Friday, Mr. Caldwell, Local Board Chairman announced.

To eliminate the necessity for young men to travel to the new administrative site to register, Mr. Caldwell explained that registrars have been appointed in many communities. Registrars and their locations in this area are: Guy A. Baker, Mt. St. Mary's College, Emmitsburg; and Mrs. Margaret Bruchey, Librarian, Thurmont Public Library.

Mr. Caldwell emphasized that despite the relocation of the Board's administrative site, the local board will continue to meet in Frederick, as Local Board No. 45 still remains a part of our community; only the office will move.

The highly questionable dining habits of a shark were noted in Thomas Helm's book "Shark". Helm reveals that the stomach of one blue shark contained (in addition to the usual garbage and fish) two soft drink bottles, an aluminum soup kettle, a carpenter's

square, a plastic cigar box, a screw-top jar partly filled with nails, a two-cell flashlight, several yards of 1/4-inch nylon rope, a rubber raincoat, a worn-out tennis shoe and a three-foot roll of tar paper.—Sports Afield

You and your pet

BY TED KAVANAUGH, DIRECTOR, ALPO PET NEWS BUREAU



Choosing A Breed: The Toys

As the smallest of purebred dogs, size as well as disposition make the Toy breeds ideal pets for apartment dwellers. Don't be misled by the term "toy"; they are alert watchdogs, spunky if challenged, winsome show dogs and unusually long-lived.

Toys were bred as pets and companions. Some are perfect miniatures of larger breeds; others descend from favorite pets of ancient royal courts around the world.

There are 17 recognized breeds in this group ranging in weight between 2 pounds for the smaller Chihuahuas and up to 18 pounds for the Pug.

Long-haired toys, whose profuse coats require more grooming time, include the English Toy Spaniel, Japanese Spaniel, Maltese, Papillon, Pekingese, Pomeranian, Shih Tzu, Silky Terrier, Toy Poodle and Yorkshire Terrier. Chihuahuas come in both long and short-coated varieties.

Short-coated toys are the Af-fenpinscher, Brussels Griffon, Italian Greyhound, Miniature Pinscher, Pug and Toy Manchester Terrier.

Some Brief Profiles Pekingese: Sacred dog of ancient China from the 8th century Tang Dynasty, often carried in the sleeve of nobles' robes. A good natured, dignified, independent companion; not a lap dog. Av. wt. 9 lbs., ht. 6".

Chihuahua: A pet and religious symbol of Toltec and Aztec civilizations in what is now Mexico. The smooth-coated type is more numerous here but both varieties are lively, intel-

ligent pets. Av. wt. 3 lbs., ht. 5". Pomeranian: A "Spitz" type whose larger ancestors were Baltic sled dogs. Poms sport a curled, bushy tail and a foxy expression; they are docile, with a gay, bold spirit. Av. wt. 5 lbs., ht. 7".

The Papillon "Butterfly"



Papillon: French for "butterfly," a resemblance created by his fringed erect ears. Painted by Titian and Rubens with his noble owners, this hardy, elegant, friendly dog is gaining U.S. popularity. Av. wt. 10 lbs., ht. 10".

Watch for my next column on the Frisky Terrier breeds.

These brief columns can only introduce you to the many wonderfully different breeds; it takes a book to really show and tell you about them. Happily, such books are available at libraries. I urge interested readers to dig into one; you're bound to learn about the breed that just suits you.

After you've chosen your pup, use one of the complete and balanced dog foods on the market, like ALPO, for good, daily nutrition.

And remember regular health checkups by the veterinarian.

PLANNING TO MAKE HOME REPAIRS AND UPGRADE YOUR LAWN OVER THE 4TH OF JULY WEEKEND?

WE HAVE

Most Everything You Need—

Paints - Screens - Glass

Small Bathroom & Kitchen Fixtures

Nails - Bolts - Locks

Scotts Lawn Fertilizers

Sprays for Vegetables - Flowers

Fruits and Lawn

Come in and Look Around

Open Mondays and Fridays 7 to 9

ZERFING'S HARDWARE

BALTIMORE ST. GETTYSBURG

Phone 717-334-1122

Free Parking Rear of Store

comfort is beautiful

\$17.98

SPACE STEP by NURSE-MATES

MARTIN FAMILY SHOES

26 Baltimore Street
Gettysburg, Pa.

Use Your NAC Charge—Mastercharge—BankAmericard

We admit it! This "Kampy" looking new Nurse-Mates side tie will never win first prize in a shoe beauty contest. But when it comes to comfort—day-long, foot-soothing comfort—the SPACE STEP by Nurse-Mates has no equal. Softly lined buttery leathers. Side lacing for easy fit. Plenty of ventilating air holes for day-long freshness. Try SPACE STEP today—it may well be the most comfortable duty shoe you've ever worn.

HAPPY BUYERS!

The Owners of Good Clean Cars

—We Want More Happy Buyers—

- 73 JEEP 3/4 T. Tk. S O L D matic; Custom
- 72 WAGONEER V- S O L D matic; Power Steering
- 72 COMMANDO V-8; Automatic; Sharp
- 72 GRAN TORINO V-8; Air Cond.; FM Radio
- 72 LE MANS CPE V-8; Automatic; Air Cond.
- 72 AMBASSADOR 4- SS O L D Automatic; Air Cond.; FM Radio
- 71 AMBASSADOR 4-DR. V-8; Automatic; Air Cond.
- 71 VOLKSWAGEN BUG 4 cyl.; 4-Speed
- 71 MATADOR CPE. V-8; Automatic; Air Cond.
- 71 GREMLIN CPE. 6 cyl.; Floor Shift
- 71 CHEV. 3/4 T. S O L D Automatic; Power Brakes & Steering
- 70 MAVERICK 6 cyl.; Automatic
- 70 CAMERO CPE V-8; 4 Speed
- 70 FORD GALAXIE V-8; Automatic; Air Cond.
- 69 AMBASSADOR WA'S O L D matic; Air Cond.
- 68 BUICK SDN. V S O L D ; Air Cond.

STOP IN — SHOP — SAVE MONEY

During Our New Car RED, WHITE & BLUE SALE Thru July 10th

GRUMBINE AMERICAN INC.

Route 140 South At Hunt Ave. Gettysburg

Open Evenings 'Til 9

Phone 334-2189

It may be made of paper but it can't go up in smoke.

Paper burns. But there's a lot more to a U.S. Savings Bond than the paper it's printed on. Each Bond is registered carefully and the records are kept in the Treasury Department vaults.

So if your Bonds are burned—or lost or stolen—just report it (with all available information including serial numbers) to the Bureau of Public Debt, 536 S. Clark Street, Chicago, Illinois 60605. Your claim will get prompt attention.

You won't even lose any interest during the time it takes to replace your Bonds. Buy U.S. Savings Bonds. They may not look it, but they're practically indestructible.

Take stock in America.

DON'T risk a ruined vacation.

DON'T carry cash.

DO carry Travelers Checks.

Wherever you travel . . . or even if you keep money at home or at work . . . the best way to protect your money is to use First National City Travelers Checks.

If they're lost or stolen you can get an on-the-spot refund at over 35,000 refund points in the U.S. and overseas.

. . . The most extensive refund service in the travelers check business. They're honored worldwide in millions of places.

BUY THEM AT

FIRST NATIONAL BANK

OF FAIRFIELD, PA.

Phone 642-8225 Fairfield, Pa.

Member Federal Deposit Insurance Corporation

IT'S TRUE!

LIVE ENTERTAINMENT

AT

THE OTT HOUSE

JULY 1, 2, 3, 4

FEATURING

BIRD DOG

FROM OCEAN CITY

WHAT TO LOOK FOR IN AIR CONDITIONING

Many consumers are searching for an air conditioner to help them keep their cool. Experts encourage care in purchasing any air conditioner—a unit that's too small for your needs will leave you hot, while a unit too large can result in less comfort due to higher humidity left in the cooled air.

While size may head the list, there are other features to consider. For example, does the unit you're considering have an easy to remove filter, since you should clean your filter every 30 days to insure peak performance. Does it have a strong, rust-resistant chassis? Does it have a factory-mounted quick-installation kit to insure ease and speed of installation?

"Sizing Up" An Air Conditioner

To decide which air conditioner unit you need for any room use this simplified chart designed by Emerson Quiet Kool.

First, decide which class of room you are air conditioning. Extra hot-rooms have unusual heat loads because of poorly insulated roofs above, large windows facing south or west, large openings to unconditioned areas, etc. Bedrooms are rooms that are not in constant use during the heat of the day and need cooling mostly at night.

Second, measure length and width of space to be air conditioned. Find "length" on chart under proper category, and follow horizontal line. Find "width" on chart and follow vertical line. Point at which these two lines intersect guides you toward selection of proper air conditioner capacity in BTU/hrs. For example, a normal room 26' long, 15' wide calls for a 14,000 BTU capacity. When a selection falls between two capacity

Figure the type of room: rooms looking south or west, or those with no insulation are especially hot; rooms near air conditioned areas that aren't on the top floor are cooler; other rooms such as those facing north and bedrooms that don't need air conditioning all the time are cooler still. Measure the length and width of the room and determine your air conditioning requirements from the chart. Rooms that are longer than wider will do better with two small units. Humidity control makes a smaller conditioner better than a larger, should the selection fall between two sizes.

As such as 50 per cent.

Also choose a unit with a slide-out washable filter for fast cleaning. Cleaning your filter regularly at least once every 30 days can cut utility bills. A clogged filter reduces air flow, and if this reduction is great enough, eventually leads to complete loss of cooling.

By selecting the unit that's right for you, and using simple maintenance, it is possible to enjoy a cool summer using the least amount of energy.

But there is more to selecting an air conditioner than just size. You should also select a unit with a high energy/efficiency ratio which gives you more cooling for every unit of electricity. Some "Watt Watcher" units have energy/efficiency ratios as high as 10.0 and reduce power consumption

How To Find The Right Size Unit For Any Room

WASHINGTON REPORT FROM SENATOR J. GLENN BEALL JR.

Inflation and the Budget

Inflation in this nation continues to be one of our most serious problems, for now and for the future. We have found that controls on prices have a beneficial effect for only a limited period of time but also tend to create new problems for the economy such as shortages in many areas.

The new fiscal year begins without many agencies knowing what funds will be available for what programs—an inefficient and distressing way to do business. Under the new bill, the time for the fiscal year will be moved to October 1, and all appropriation bills must be passed by that time.



LOOKING AHEAD

By George S. Benson, President, National Education Program Searcy, Arkansas

The Big Land Grab—Part II Under the guise of "helping and protecting" the American farmer and businessman, the alphabet has been exhausted by agencies and commissions of the federal government.



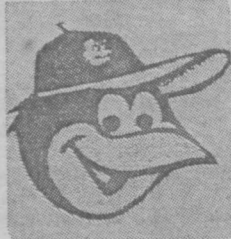
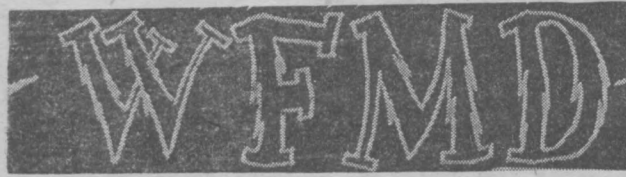
It is said that when Marie Antoinette was talking about the bread riots of Paris during October 5th and 6th, 1789, the Duchess de Polignac naively exclaimed, "How is it that these silly people are so clamorous for bread when they can buy such nice brioches for a few sous?"

WALLACE FORD PAINTING CO.

HOME AND FARM PAINTING Caulking & Weatherstripping Also Complete Remodeling Service

PHONE 447-2366

ROUTE 2, EMMITSBURG, MD.



HEAR THE "BIRDS" BALTIMORE ORIOLES

CBS RADIO 930 am Frederick, Md.

WFRE STEREO 100

Up to 57 Minutes Per Hour of BEAUTIFUL STEREO MUSIC

LOOKING FOR A GOOD USED CAR? SEE OUR GUARANTEED USED CARS

- 1972 Ford 4-dr. Sdn., V-8; Auto. Trans.; P.S.; Air Cond. 1972 Mercury Montego V-8, 4-Dr. Sdn.; Auto. Trans.; Power Steering; Air Conditioning.

COMPLETE LINE ALLCAR AUTO PARTS BATTERIES & TIRES

SANDERS GARAGE

PHONE 447-6151 EMMITSBURG, MARYLAND

Look And Feel Like A Winner While You Lose!

Think positive about dieting this summer! The right diet can make you feel lighter and brighter than you have in years. Feeling light is nice at any time, of course, but especially in summer—when just the heat radiating off the sidewalk seems to weigh you down.



Be careful to protect your health, however. Don't fall for crash diets that rob your body of vital nutrients. A diet of lettuce and water, for example, will leave you feeling like a limp lettuce leaf yourself.

Establish this eating pattern right away. You'll feel like a winner from the start. Not only will you want to take part in more sports and outdoor activities, but there's a beauty bonus too.

Table with 2 columns: Meal, Description, Calories. Includes Breakfast, Lunch, and Dinner items with calorie counts.

"BEAT THE BUGS" With

Barrick's Burned Lime



To Top Dress Haylands with Barrick's Ground Burned Lime Promptly after the First Cutting Is a Safe and Practical Method of Dealing with Living Insects and their Larva, and at the Same Time Maintain the proper PH as Well as the Calcium and Magnesium Content of the Soil.

For Prompt — Careful Spread Service Call Our Dealer Nearest You or S. W. BARRICK & SONS, Inc. WOODSBORO, MD. — PHONE 845-6341

much the same. Though dangerously close to out-right seizure of private land without compensation to its owner, it can now be sold to the country by the technique of "soft-sell."

Supporters of land-use legislation maintain that the bill is merely a "voluntary" grant-in-aid program, intended to encourage states to develop comprehensive plans within the states for use of land.

The price-tag attached to this scheme is more than one billion dollars. Some ten million per year will go to set up and operate new federal agencies to make certain that the planned society dictates are carried out by state agencies.

Additionally, the local taxpayers would be forced to shell out even more tax money in the form of 25 per cent matching funds... and it is a certainty, moreover, that the local tax base would be reduced by the new "ecological, environmental protective" zoning restrictions.

This proposal to give the U. S. Government control over our land is not dead. It is be-

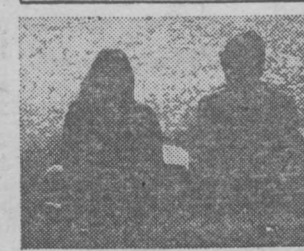
Garden & Flower Seeds

Buy Your Grass Seeds and/or Fertilizer From Us and We'll Loan You a Spreader!

Plaza Home & Garden Center, Inc.

Calvin S. Burrier Thurmont Shopping Plaza FREE! "Favorite Recipes From The Farmers Almanac" Edited by Ann Geiger FREE!

Keeping The FAITH



"I love you, Not only for what you are, But for what I am When I am with you..."

Roy-Croft This poetic sentiment speaks movingly of true friendship which is the real basis for every good marriage. Even with the current popularity of alternative lifestyles—communes, trial marriages and the like, in the minds of most young people, marriage still means two persons making a long range commitment.

The words of Emanuel Swedenborg—18th century scientist, philosopher, and theologian—on the subject of marriage are as relevant today as when first written. In the Rev. Wm. Wunsch's compilation Marriage (Ideals And Realizations) he quotes Swedenborg's statement: "The states of marriage love are innocence, peace, tranquility, inmost friendship, full confidence; and from all these come blessedness, happiness, joy, pleasure..."

Marriage (Ideals And Realizations), a 155 page white cloth volume, covers a wide variety of passages which will offer stimulating insights on marriage. The concepts are illuminating as well as inspiring and cannot help but enlarge one's views on the wonderful institution of marriage.

Emmitsburg Chronicle

Established 1870 Successor to the Emmitsburg Banner, Established 1840 EMMITSBURG, FREDERICK COUNTY, MARYLAND Published weekly on Thursday by COLONIAL NEWSPAPERS INC., 107 South Seton Avenue, Emmitsburg, Maryland 21727. Telephone 301-447-2333

ROBERT B. WENTWORTH, PUBLISHER JAMES L. KOONTZ, EDITOR

Copy for Advertisements must be received in this Office not later than Tuesday morning to insure publication in the current week's edition. Advertising rates furnished upon request. Subscription rate, \$4.00 per year in advance. All Communications and Checks intended for this Paper should be addressed and made payable to EMMITSBURG CHRONICLE, Emmitsburg, Maryland 21727.

Entered as Second Class Matter at the Postoffice at Emmitsburg, Md., under the Congressional Act of March 3, 1879.

NATIONAL MEMBER NEWSPAPER Maryland-Delaware-D.C. Association - Founded 1908 Press Association Inc.

ing processed by some of the most powerful organizations in this country. They have vowed to continue their fight until it becomes the law of the land. Without federal control over private land, a fully planned, regulated and controlled society cannot be forced upon the American people.

FREDERICK CHRISTIAN ACADEMY

A private non-denominational Christian School open to all.

- We emphasize: Academic Excellence Christian Character Moral Principles Patriotism Christian Discipline

Applications still accepted for kindergarten thru grade 8 For more information call: 301-662-7935 or write to Frederick Christian Academy, Box 373, Frederick, Maryland 21701

CONVENIENT DEPENDABLE GIBSON

SAVE NOW ON FROST-FREE UPRIGHT FREEZERS

REAVES ELECTRIC CO. 402 W. Main St. 447-2497 Emmitsburg

Home Shopping Guide

How To Buy Intelligently

In these days of the shrinking dollar, it makes good sense to try to get the most for your money. When considering a purchase, either in a store or in your own living room from a member of the \$6 billion a year direct selling industry, follow these proven tips:

- Shop carefully and buy only what you really want or need. -Ask questions about comparable products. -Obtain a copy of any guarantee in writing. The guarantee should state its scope and limitations, clearly defining who is responsible for honoring it. -Before you sign a contract or order, be sure you have read it carefully and that all blank spaces are filled in, as required by law in many states. -Get an itemized receipt at time of purchase or delivery. Tax, if any, or other additional charges should be separately noted. The name and address of the seller should appear on the receipt. -Know with whom you are dealing. When taking advantage of the high-quality products, personal service, convenience and economy of shopping at home, request identification of the salesperson. If the company whose products are being sold is a member of the Direct Selling Association, the salesperson will be bound by one of the toughest codes of business ethics in retailing, independently and impartially enforced. For detailed information on the code, write for the "Direct Selling Association Opens the Door to Consumer Protection" brochure to: Direct Selling Association, Dept. M1, 1730 M Street N.W., Washington, DC 20036, and when it arrives, keep it in a convenient place for ready reference.

ICE COLD Beer-Wine-Liquors

10% DISCOUNT ON CASE LOTS OF WHISKEY

ROGER LIQUOR STORE

ANN G. ROGER, Prop. SOUTH SETON AVE. PHONE 447-6262 EMMITSBURG, MD. Store Hours: Monday Through Thursday, 8 A. M. to 10 P. M. Friday & Saturday: 8 A. M. to 11 P. M.

BUSINESS AND THE STOCK MARKET

Stocks For Eventual Housing Recovery

By Babson's Reports Inc., Wellesley Hills, Mass., June 27, 1974—The upturn in residential building looked for in the second half of this year may well be postponed as a result of sky-high interest rates and a marked decline in mortgage funds because of disintermediation. Building permits, a leading tipoff on where housing is headed, were recently reported to be 43% below levels of a year ago. But prospects for companies in the housing field are not entirely bleak. The three companies featured in this column today, for example, are dependent to some degree on the residential housing market, yet they have enough strength in other areas to offset a considerable extent the bad effects of a drop in their housing business. The Research Department of Babson's Reports feels that these companies should do reasonably

ably well even in a poor housing year and much better when the housing upturn does materialize. Such stocks seem well worth buying at today's low prices.

CHAMPION INTERNATIONAL CORPORATION: This company is the result of a merger between U. S. Plywood Corp. and Champion Papers, Inc. in 1967. Late statistics indicate that 60% of sales totals comes from building materials, 30% from paper and allied products, and 10% from home furnishings. There has been considerable fluctuation in company earnings since 1967, but in 1973 net sales rose 18% to a record \$2,208 million and net income leaped 45% to \$86.8 million. Although we would expect some slowing of profits gains this year, the reported first-quarter net income was 27% ahead of the year-earlier rate, and the year as a whole promises to be relatively good. Purchase of the common stock is recommended for investors seeking appreciation; also fa-

vored is the \$1.30 Cv. Pref., which provides a higher yield. Both issues are average grade and listed on the N. Y. Stock Exchange.

GIANT PORTLAND CEMENT: This concern is well managed and operates as a regional cement producer in the fast-growing Southeastern markets. In terms of profit margins, return on stockholders' equity, and earnings, GPO in recent years has outperformed many of the large cement firms. Despite the fall-off in housing starts, overall construction activity in GPO's area is expected to continue sufficiently strong for the company to realize significant benefits from its new cement facilities. Unusually severe weather conditions resulted in a drop in earnings last year, but the two most recent quarters have been well ahead of year-earlier levels. With the help of new plant facilities and higher cement prices, further earnings can be expected in coming quarters. In our opinion, the speculative-grade

common (NYSE) is an attractive buy for investors looking for capital appreciation potential plus a fairly liberal yield. The company has no long-term debt and only \$2.5 million in current liabilities while current assets total \$12.7 million.

PPG INDUSTRIES: A well-diversified manufacturer, the company produces a wide line of glass, chemicals, coatings and resins, and fiber glass. It serves not only residential and commercial construction lines but also the automotive, chemical processing, petroleum refining, and export and international markets. In 1973 PPG chalked up another record year as earnings and sales rose 13%. Although profits are expected to dip in 1974 because of sharply higher costs and reduced demand in some of the company's major markets, prospects for the long term are optimistic. The future earnings base has been considerably enlarged by the aggressive capital spending program of recent years. The price of the common stock would now seem to discount adequately the anticipated earnings slowdown. In our opinion, purchase of the average-grade common stock (NYSE) should prove rewarding for accounts in search of long-term appreciation and dependable income. Dividends have been paid each year since 1899.

Those interested may have a free copy of an even more detailed report on all or any of these three companies by writing to Babson's Reports Inc., Wellesley Hills, Mass. 02181.



OPEN LINE

By
Congressman Goodloe Byron
Maryland—Sixth District

The following questions were typical of the kind asked of me in recent weeks. Letters should be sent to me, c/o U. S. House of Representatives, Washington, D.C. 20515.

Where do you stand on health legislation?

I have co-sponsored the Medicaid Bill which provides for medical and hospital care thru a system of voluntary health insurance. In short, this legislation makes it possible for every individual to obtain comprehensive medical and hospitalization insurance to protect against ordinary and catastrophic expenses of illness, regardless of prior medical history and on a guaranteed renewable basis.

Do you have any information on "Truth in Lending"? An excellent booklet explaining consumer's rights under federal law in obtaining full information on credit terms is available free from Consumer Information, Pueblo, Colorado 81009. Just ask for pamphlet 075B — "Truth in Lending".

Please explain the Freedom of Information Act recently passed by Congress? As originally enacted in

empted categories. The new bill was designed to broaden accessibility to information by prohibiting delays in supplying government materials and by holding federal officials accountable for withholding documents.

What is the budget for NASA and what programs are the monies used for? Congress recently authorized the National Aeronautics & Space Administration \$3.2 billion — the second smallest approved for the U. S. space program since 1962. The bill expands funding for development of a reusable space shuttle, authorizes funds for the 1975 joint U. S.-Soviet man-

ned pocking mission, approves monies for programs applying space technology to earth's problems — including energy research and development, and includes funds for further lunar and planetary exploration.

How did you vote on the Deepwater Ports Bill? I supported final passage of the legislation which authorizes the Secretary of Interior to grant licenses for construction of deepwater port off the territorial waters of the United States, after was determined that construction of a port was in line with the land and water use law of the adjacent state.

Steal me. Burn me. Throw me away. I'm still yours.

50th Anniversary Series E Savings Bonds

Once you bring me home, I'm yours forever. Even if I'm buzzed. Or lost. Or stolen. If you look for me and can't find me, just report it. And you'll get me back, as good as new. And remember: I'll never break your heart. Or leave you stranded in the tight spots. I'll always be there when you need me. And that ought to make you feel pretty secure.

Now 12 Bonds pay 6% interest when held to maturity of 5 years (4 1/2% the first year). Bonds are replaced if lost, stolen or destroyed. When needed, they can be cashed at your bank. Interest is not subject to state or local income taxes, and federal tax may be deferred until redemption.

Take stock in America. Join the Payroll Savings Plan.

LIBRARY HOURS

Monday, Tuesday, Wednesday
2:30-5 - 6:30-9
Thursday, 10-Noon - 2:30-5
Friday, 2-5
Saturday, 9 A.M.-12 Noon

Business Services

PATRONIZE our advertisers. These firms are reliable and have proven through the years that they handle only quality products and offer skilled professional service and advice to their patrons.

ANTENNA WORK

Estimates, Installations & Repairs of Antenna Towers & Systems
OUR SPECIALTY

LOOK TO MYERS' FOR THE BEST IN SERVICE

Myers Radio & TV

125 E. Main St. - 447-2202
Emmitsburg, Md.

THE GAS SERVICE PEOPLE PREFER



THE MATTHEWS GAS COMPANY

Emmitsburg - Thurmont

Hanover Maternity Shop

Complete Line Of MATERNITY WEAR
Children's Wear to Size 6X
Danskis, Leotards, Tights & Trunks — Shower Gifts
Selva Dance Footwear
41 Frederick St., Hanover, Pa.

Coffman Jewelers

28 Baltimore St.
Gettysburg, Pa.

OMEGA WATCHES
(ORANGE BLOSSOM DIAMOND RINGS)

DR. R. P. KLINGER, JR.

Optometrist
19 East Main Street
EMMITSBURG, MD.

Eyes Examined—Glasses Fitted
Complete Optical Repairs
HOURS
MONDAY: 6:30 to 8:30 p.m.
(Other Evenings By Appointment.)
PHONE
WESTMINSTER TI 8-8340

CODORI MEMORIALS

Rock of Ages Monuments, Markers
Mausoleums
Cemetery Lettering & Cleaning
400 W. Middle St., Gettysburg
Phone 717-334-1413

WILSON Funeral Home

EMMITSBURG, MD.
Phones:
Emmitsburg 447-6244
Fairfield 642-8642

ALBERT F. WIVELL & SONS CONTRACTOR

Custom Homes Swimming Pools
Remodeling Sales and Service
Excavation Call 447-2218

FOR PRESCRIPTION SERVICE

PEOPLES DRUG STORE

GETTYSBURG, PA.
Phone 334-2916

- Sick Room Supplies
- Greetings Cards
- Cosmetics

GET A DEAL ON THE 1974 CHEVROLET

And On OK Used Cars & Chevrolet Trucks
WANTZ CHEVROLET INC.
Phone 756-6006 Taneytown, Md.

COMPLETE AUTO AND BODY REPAIR

Service Department Hours
7:30 A.M.—5:00 P.M. MONDAY—FRIDAY
6:30 P.M.—9:00 P.M. THURSDAY EVENING

Sales Department Hours
9:00 A.M.—9:00 P.M. MONDAY—FRIDAY
9:00 A.M.—5:00 P.M. SATURDAY

Sure Sign of Value
A-1 USED CARS

ALWAYS GOOD VALUES

- 1973 Chevy Vega Hatchback; 4-Spd.; Clean.
- 1972 Ford Gran Torino Spt. 2-Dr. H.T.
- 1972 Pinto 2-Dr.; 4-Spd.; R&H.
- 1971 Ford F100 Pickup, V-8.
- 1971 Ford LTD 4-Dr. H.T.; Fully Equipped;
- 1970 Ford LTD 2-Dr. H.T.; Fully Equipped.
- 1969 Rambler 4-Door; Fully Equipped.
- 1966 Chevrolet Impala 4-Dr. V-8; S. Shift.
- 1966 Chevrolet Impala 4-Dr. Sedan; V8; Auto.
- 1964 Ford 2-Dr. H.T.; R&H; Auto.; Clean.

Sperry's Ford Sales, Inc.
PHONE 447-6171 EMMITSBURG, MD.

WEATHER REPORT

Temperatures and precipitation for the Emmitsburg District for the week ending Friday, June 21, as reported by the National Weather Service, Mrs. Lucille K. Beale, local observer, were as follows:

	H	L	Pr.
Sat., June 15	80	58
Sun., June 16	78	61	.90
Mon., June 17
Tues., June 18	74	55
Wed., June 19	83	50	1.05
Thurs., June 20	25
Fri., June 21	86	62

HERE'S GLYDE'S HAIR STYLISTS

Specializing In Men's & Women's Hair Styling
12 E. Main St., Thurmont
Phone 271-4479

SPECIAL DISCOUNTS ON ALL HOMELITE

Lawn & Garden Equipment
• Riding Mowers
• Tractors & Implements
• Walk-Behind Mowers
WHILE THEY LAST!
Plaza Home & Garden Center
Thurmont Shopping Plaza
—Calvin S. Burrler—

why the rental shops pick

The original... since 1947

Simple, Merry Tiller is rugged, dependable, needs little maintenance, and gets the job done... even in toughest soils... better than any other tiller made! Buy one and you'll see what we mean.

EMMITSBURG FEED & FARM SUPPLY
EMMITSBURG MD.

CHLORIDE MERCURY

Calomel, another name for chloride of mercury, a white powder, means "beautiful black!"

FIRE
EASY TO PREVENT
Hard to Stop!

NOW IS THE TIME FOR YOU TO RELAX
Eat Out With The Family!
VISIT YOUR FAVORITE AREA RESTAURANT
For a Special Meal and Beverage

THE OTT HOUSE
PUB & RESTAURANT
Phone 447-2625

SUBS AND PIZZAS
Complete Line Of WINES & BEERS
CARRY-OUT SERVICE

taste-freez

SPECIAL CHICKEN PARTY PRICES
Check With Us
Big T Family Restaurants
York St. - Buford Ave.
Gettysburg, Pa.

SOUP AND SANDWICHES — FOUNTAIN
SUNDRIES — MAGAZINES
FAIRFIELD CUT RATE
Fairfield, Pa. 17320

The Palms Restaurant
EMMITSBURG, MARYLAND
HOME COOKING OUR SPECIALTY
Dinners Daily Specials
Homemade Soups
Pizza - Sandwiches - Subs
CHICKEN - SOFT SHELLS
OYSTERS - SPAGHETTI
—Carry-Out Service—
We Serve Your Favorite Beer and Wine
HOURS: 6:30 A.M. - 11 P.M. Daily
—Closed Sunday—
THE PALMS RESTAURANT
Emmitsburg, Md. Phone 447-2303, 447-2991

Soup & Salad Bar
TUESDAY, WEDNESDAY, THURSDAY
11:30 A.M. - 1:30 P.M.
\$1.35
TOSS YOUR OWN SALAD
SERVE YOUR OWN SOUP
New Luncheon Menu
Sandwiches on Home-Baked Bread
Don't Miss Our Dessert Cart
Coming Soon! The Cozy Carousel!
COZY RESTAURANT
Thurmont, Md. Phone 271-7373
Congratulations & Best Wishes Graduates!

