



# THIS 'N THAT

GEORGE W. WIREMAN

**Taking A Good Look At America**  
Ten years ago this month, I was among the many enumerators taking the census of 1950. And now, a decade later the same job is being done again, and when the final figures are tabulated the results will show the growth of our great nation in the last 10 years.

Just what is the purpose of the census, and what does the word itself mean? My daughter asked these questions recently when the enumerator called upon us for the current census and I should like to cover the answers to these and several other questions in my column this week.

Census, is the enumerating of the population. In modern times information concerning the social status of the people and commercial and other data are also collected. Censuses were taken in ancient China, Persia, and Babylonia, and over a period of several centuries in Rome. After the cessation of the Roman census, there were no systematic enumeration of populations until the middle of the eighteenth century. Modern periodical censuses date from 1800 and now include most populous areas of the world except China.

The first census of the United States was taken in 1790 by United States marshals in accordance

with the provisions of the Constitution apportioning representatives in Congress according to the population of the states. Subsequently there has been a census every decade, each in general more extensive and detailed than the preceding one. With the increase in the volume of information gathered, the task of tabulating and publishing the results became ultimately so great that it was necessary in 1902 to establish a permanent organization.

The Bureau of the Census, now functioning continuously, takes man partial censuses, such as those of agriculture and manufacturing, in addition to the regular decennial enumeration.

Several of the states and nearly all school districts regularly take censuses to meet their special requirements. The information usually obtained with respect to individuals include age, sex, race, marital status, education, and occupation. Sometimes it includes income, housing, and various other facts pertaining to standards of living.

Errors in the census occur because of ignorance, faulty memory, or reluctance to answer truthfully, but they are difficult to correct because there are few sources against which to check results. Today census information has proved of inestimable value in legislation, commerce, and social-agricultural research.

The Bureau of Census is today the chief statistical agency of the United States Government and is a part of the Department of Commerce. A population census is one way of taking a good look at America and often will determine what steps to take in the future to meet the need in many fields such as agriculture, natural resources, and housing. The information that is gathered during each census is made available to the government and, through publication, to private persons.

The 1960 census, now underway, will reveal many interesting and worthwhile facts about our nation and its many citizens. Since the last census in 1950, two new states have been added to the Union. It has been estimated that in these two states of Hawaii and Alaska there are 180 million people. This means that there will be nearly 29 million more cit-

izens shown in the 1960 census than there were in 1950. This will set a record as the biggest 10-year gain in the history of the United States. So from this alone we can see that the outcome will show that we as a nation are growing.

America today is a nation of young people. It has also been estimated that the average age is 29.5 years. Of its people, 48 million are now in school. Some 68.4 million have jobs and about 3.6 million are jobless.

When the figures are tabulated in the 1960 census, they will show that the average family income is \$6,679.00 a year. Today it is estimated that the average yearly earnings of America (\$6,697) is half again as much as the average in 1950.

Other facts that are important in many fields will be ready by mid-July when it is estimated that the census of 1960 will be completed and will be another page in the history of this great nation of ours.

It has been estimated that when the final figures are released they will show some 180 million people, which is twice as many as just 50 years ago. Another important fact is that the women will still outnumber the men, but not by a big margin. There will be some 89 million males and 91 million females.

Eight out of every nine are white. Today there are 1 million fewer on farms and in rural areas. Where, you might ask, did they go? They left these areas and went to the city. Thanks to modern machinery and scientific methods, fewer farmers are now able to feed millions more people.

It has been estimated also that the 1960 census will show about 85 million more married people, 600,000 more divorced people, and 16 million more children in grade and high schools. This alone presents a problem in the educational field. To meet the needs of the growing population there will be more schools to be built and more teachers needed in the years to come.

With all the facts gathered, the real task his just begun. More children to educate, more people to feed, more jobs to be made available, etc. With these facts in mind, one can see what a tremendous task lies ahead for our government in meeting these needs, and finding the means of paying for them. Yes, government is today the biggest business of all, and the biggest problems are those that our government will face in the next ten years.

We must not forget that you and I are a part of that government of which I speak. When called upon to support the needs of our government, whether it be in the way of personal service or in the paying of higher taxes, we must all be willing to do our share.

America has come a long way since 1776. The road has not been an easy one to travel. There have been many ups and downs, but by the grace of God, we have always come through with flying colors, and this alone should make each one of us proud to be an American citizen.

We must continue to fight to keep America free and united. We must work hard to solve our many problems and to keep the American flag flying over this . . . "the land of the Free and the home of the Brave."

## Garden Tour, Show This Weekend

The Seventh Annual Landon Azalea Gardens Tour is set for Saturday, April 30, and Sunday, May 1, 1960.

The Gardens, located on the Landon School grounds, in Bethesda, Maryland, will be open from 12 noon, to 10 p. m. on both days.

The event, one of the outstanding Washington area springtime attractions, is for the benefit of the Landon Endowment and Scholarship Fund.

More than 15,000 blooming azaleas of approximately a thousand different varieties are in the Landon Gardens collection. Among them are prized unusual and hard-to-grow specimens of azaleas, tree peonies and rhododendrons. Some of these are types regarded by experts as so difficult to raise and of such fleeting blooms, that their culture is neglected by most gardeners.

During both days, the Landon School Headmaster's House will be open from noon until 6 p. m. The house itself is 150 years old; and the hall of the present structure was originally a log cabin. In the house are displayed art objects of several periods, including early Meissen china, an extensive early lamp collection, and other valuable antiques. The Headmaster's House has its own three-level garden and pool.

The Landon School Chorus will present a program, at 8:30 p. m., on each evening of the Tour. Other features of the event will be a display of flower arrangements, and a plant sale. During evening hours the gardens will be illuminated with unique outdoor lighting.

Admission to the grounds is \$1.00 and there will be ample free parking on both days.

## Senator Kennedy Urges Aid To Small Business

WASHINGTON—Senator John F. Kennedy this week urged more attention be given the plight of small business and the problems of "mainstreet, USA."

"One of the great challenges of the sixties will be to put an end to this trend of business failures and to reverse the disastrous policies which are destroying this historic cornerstone of our free enterprise system," the Senator stated.



He added that positive action must be taken to strengthen the small independent businessman against the large business units which threaten to crowd the little businessman from the American economic scene.

"First we must reverse the high interest rate and tight money policies which have cut off vital credit from small business anxious to expand and from new businesses struggling to survive," he said.

The Senator noted that large corporations can finance themselves out of profits and that they are preferred borrowers of the large banks. "But the small businessman must be satisfied with whatever credit is left over and in a tight money economy he is often turned away," Senator Kennedy said.

Other steps proposed by Senator Kennedy to help small businessmen help themselves are: Expand sources of credit, increase small business' share of

the national defense effort and enforce anti-trust laws with more vigor.

The Senator said the Small Business Administration failed to pursue vigorously the goal of the Small Business Investment Act to make long-term credit available to the individual businessman.

## PICNIC DATE SET

At a meeting of the Sodality of the Blessed Virgin, held Monday evening, it was decided to hold the annual picnic for the benefit of St. Joseph's Catholic Church on Saturday, July 9. This will be an outdoor affair and will take place on the lawn of Saint Joseph's Rectory and the grove adjoining the rectory. A cold turkey and ham supper will be served.

Detailed information concerning securities listed are obtainable from T. C. Hofstetter, Frederick County representative of Merrill Lynch, Pierce, Fenner and Smith, Inc., Equitable Bldg., Baltimore. Phone MU1berry 5-3200.

The funeral of Mrs. Blanche Maurice Zurgable, Mr. Norbert Kain of Baltimore, was held from Wivell, Mrs. Alice Balmer, Mrs. All Saint Church last Thursday. Margaret Shorb, Mrs. Louis Topper, Mrs. Roger Topper and Mr. Their Aunt from town were: Mr. and Mrs. Roy Wivell.

### THE STOCK MARKET

The following Stock Market quotations were obtained from the firm of Merrill Lynch, Pierce, Fenner and Smith, Inc., Equitable Bldg., Baltimore, and represent actual prices at the close of business yesterday (Thursday):

1959-60	High	Low	Open	High	Low	Close	Net
96 1/4	79 3/4	AmTel & Tel	89	89 3/4	87 1/2	88 1/4	-1
43 1/2	32 1/2	Balt & Ohio	31 1/2	31 1/2	30 3/4	31 1/4	- 1/2
57 1/4	45 1/2	Beth Steel	43 3/4	44 1/4	43 1/2	44 1/4	+ 1/4
27 1/4	24 1/4	Balt G&E	26	27	26	26 1/4	+ 1/4
92 1/2	66 1/2	Ford Mo	67 1/2	68	66 1/2	66 3/4	- 1/4
99 1/2	84 1/2	Gen Electric	90 1/4	90 1/4	88 1/2	88 3/4	- 1/4
55 1/2	43 1/2	Gen Motors	44 1/2	45	44 1/2	44 3/4	+ 1/4
55 1/2	41 1/2	Monsan Chem	40 1/2	40 1/2	40 1/2	40 1/4	- 1/4
471 1/4	407 1/4	Int Bus Ma	448	449 1/2	447 1/2	447 1/2	- 1 1/2
50 1/2	43	St Oil N J	42 1/2	42 1/2	42	42 3/4	+ 1/4
148 1/2	126 1/2	Un Carbide	128 1/2	129	127	127	- 1 1/2
57 1/4	45 1/2	Westg. Elec	54 1/2	54 1/2	53	53 1/4	- 1 1/4

STANLEY WARNER  
**MAJESTIC**  
GETTYSBURG ED 4-2513

Now-Sat. April 30  
Tony Dean  
Curtiss Martin  
"WHO WAS THAT LADY?"

Sun.-Tues. May 1-3  
Ernie Margo  
Kovacs Moore  
"WAKE ME WHEN IT'S OVER"

Wed.-Sat. May 4-7  
JERRY LEWIS  
"VISIT TO A SMALL PLANET"

WHAT WE REALLY SELL IS USED CAR SATISFACTION. OLD CUSTOMERS COME BACK AGAIN & AGAIN FOR A "SAFE-BUY" USED CAR FROM DAVE OYLER.

1959 LINCOLN Premier 4-dr. Htop. demo.; large discount.  
1957 MONTEREY 4-dr.; R&H&A; one owner; a real buy!  
1957 MONTCLAIR 2-dr. Htop; 2-tone; loaded.  
1957 LINCOLN Premier 4-dr. Htop; loaded! A beauty.  
1957 LINCOLN Pemier 2-dr. Htop; loaded; very clean.  
1956 MERCURY Montclair Htop 4-dr.; PS, PB, Power Seat.  
1956 MERCURY 4-dr.; R&H&A; PS.; a real value!  
1955 FORD Ranch Wagon Deluxe; 2-dr.; std. drive; V-8.  
1955 FORD 4-dr.; R&H&A; red & white Fairlane; \$795.  
1955 PONTIAC "870" 2-dr. Htop; R&H&A; white wall tires.  
1955 DODGE Royal 2-dr. Htop; excellent condition.  
1954 MERCURY 2-dr. Htop; R&H&A; 2-tone; don't miss it.  
1953 (2) FORD Custom 2-dr.; R&H; Automatic Trans.  
1953 MERCURY 4-dr.; R&H; Overdrive; 2-tone paint.  
1953 PACKARD 300; R&H&O.D.; cheap transportation.  
1952 FORD Custom 2-dr.; R&H&A; only \$295.  
1952 MERCURY 4-dr.; R&H&A; black. Make good 2nd car.  
1951 OLDSMOBILE Sedan; R&H.  
1950 MERCURY 2-dr.; H&OD; one owner; cheap operating.

**DAVE OYLER MOTORS**  
—Adams County's Only Lincoln-Mercury-Comet Dealer—  
(Your present car in trade—Tiny Terms)  
STEINWEHR AVE. Phone ED 4-1116 GETTYSBURG

**NOTICE OF ELECTION!**  
THE BURGESS AND COMMISSIONERS OF EMMITSBURG, MARYLAND ANNOUNCE THE

# ANNUAL ELECTION

of the Corporation of Emmitsburg, Md.  
**MONDAY, MAY 2, 1960**  
A BURGESS AND ONE COMMISSIONER WILL BE ELECTED

The Polls will be open from 2 to 7 P. M. (DST) and voting will take place in the Town Office near the Square.

IT IS YOUR CIVIC DUTY TO VOTE IN THE SELECTION OF YOUR TOWN GOVERNMENT!

**MONOCACY OPEN AIR**  
Phone PL 6-6777

Fri.-Sat. April 29-30  
STEVE REEVES  
"GOLIATH AND THE BARBARIANS"  
In Colorscope  
—ALSO—  
"LUST TO KILL"  
Plus Color Cartoon

Sun.-Mon.-Tues. May 1-2-3  
DOUBLE FEATURE  
Doris Day - Rock Hudson  
"PILLOW TALK"  
—PLUS—  
Charles Drake  
"STEP DOWN TO TERROR"

Wed.-Thurs. May 4-5  
Lana Turner - Sandra Dee  
"IMITATION OF LIFE"  
—PLUS—  
Tony Curtis - Don Taylor  
"JOHNNY DARK"

**STATE THEATER**  
THURMONT, MD.  
Phone CRestview 1-6841

Fri.-Sat. April 29-30  
Victor Mature  
"THE BANDIT FROM ZHOBE"  
In Color  
Shows Friday at 7:15 and 10:07  
Saturday shows at 4:32-7:25-10:17  
—PLUS—  
"TARAWA BEACHHEAD"  
Show Friday at 8:50 only  
Saturday at 3:00 - 6:00 - 9:00  
Plus Cartoon

Sun.-Mon. May 1-2  
Gary Cooper - Charlton Heston  
"THE WRECK OF THE MARY DEARE"  
In CinemaScope and Color  
Shows Sunday at 5:00-7:00-9:00  
Monday at 7:15 - 9:15  
Plus Cartoon

Tues., Wed., Thurs.  
**CLOSED**  
STARTS SCNDAY, MAY 8  
AVA GARDNER  
"THE NAKED MAJA"  
In Color

it's a **BIG BUY**

For Big Summer Tire Bargains See Us First

TRADE IN YOUR TIRES!

Complete Stock

**Keepers & Adelsberger**  
Phone HI 7-4516  
S. SETON AVE. EXT. EMMITSBURG, MD.

you sit on foam and you love it...

**NOW, SLEEP ON IT!**

just make sure it's **U.S. KOYLON** the platinum label in a foam mattress

Foam is the most perfect sleep substance man has ever invented. Unlike ordinary mattresses, foam supports every inch of you, instantly rests tired bones, tense muscles. Just stretch out . . . you'll see. But make sure it's U. S. Koylon, world's only foam mattress with truly reversible, double-core construction, for extra-reliable firmness, buoyancy, and extra years of satisfaction. Combinations of mattress and foundation

**WENTZ'S**  
BALTIMORE STREET GETTYSBURG, PA.

# Emmitsburg Chronicle

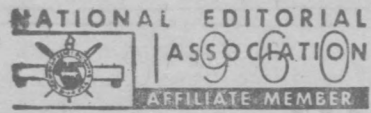
EMMITSBURG, FREDERICK COUNTY, MARYLAND  
Published weekly on Friday by the CHRONICLE PRESS INCORPORATED, South  
Baton Avenue, Emmitsburg, Maryland. Telephone Hillcrest 7-5511.

CHARLES ARTHUR ELDER Editor-Publisher

All Communications and Checks intended for this Paper should be addressed and  
made payable to the CHRONICLE PRESS INCORPORATED, Emmitsburg, Md.

Copy for Advertisements must be received in this office not later than Wednesday  
evening to insure publication in the current week's edition. Advertising rates  
furnished upon request. Subscription rate, \$3.00 per year in advance.

Entered as Second Class Matter at the Postoffice at Emmitsburg, Maryland, under  
the Congressional Act of March 3, 1879.



Member of Maryland Press  
Association, Inc., and Pennsy-  
vania Newspaper Publishers Assn

## BABSON

Writes . . .

BY ROGER W. BABSON

### Babson Discusses Our Educational Costs

BAWSON PARK, Md., April 28—Probably no event this past year in higher education has stirred up more of a furor than the late Bearsley Ruml's plan for curbing the fiscal ailments of our colleges.

A Taxpayer's Financial Problem Most readers know that inflation has made such an impact upon our colleges that fees have been constantly increased year after year. Today we are failing to develop some of our best brains because many brilliant high school graduates just cannot afford college.

To slow down this ever accelerating spiral of educational costs, and to attract and hold better faculty, it has been proposed that the colleges mass-produce students as an automobile factory mass-produces cars. Theoretically, if a professor teaches 50 in a class instead of 25 students, he has doubled

his production. Greater productivity should cut operating costs and in turn lead to higher salaries. Another suggestion is to chop out of the curriculum the many courses of study for which demand is slight and classes small. I personally do not believe in large classes; but I do believe that both high schools and colleges could omit many courses which are now cluttering up educational efficiency.

Reactions To Economics have been violent. Educators everywhere have been vociferous in their opposition. They argue that students are not to be shaped on a production line as chunks of metal are milled and bored for engine blocks. The large lecture hall, educators rightly contend, would then become little more than a means for transferring the professor's notes to the students' notebooks. A college education is not just cramming the mind with facts about history or science or business. There must be reaction by students; where there is no reaction, there is no learning. Ideas must be chewed, digested, assimilated into the student's own philosophy. To effect this reaction an instructor must challenge his students, listen to their questions, criticize or encourage them. Education is the sum total of one's development of character; one's attitude and reactions to life. With such educational goals I fully agree.

Yet if the average high school or college would be honest about how effectively it is accomplishing these goals, all it has to

do is to seek the opinion of its most mature students. When it does this I wager many an administrator will be shocked to learn how many instructors are complete bores. The question of cutting out courses is entirely different; when only a few students want a certain course, let them go to a nearby college and get it. Such courses should be taught by only one college within a radius of 15 miles.

Real Problem Is One Of Values A look at our national appetite for a good time, our national pastime of belittling things intellectual, our accelerating divorce rate, our shrinking from unpleasant responsibilities, our shocking juvenile delinquency, and our measurement of "success" in terms of material possessions, makes one wonder just how effective is the present education method which our educators so stoutly defend.

What kind of citizens have we after they have graduated from college? Have they developed habits of straight thinking? Are they intellectually honest? Have they made their neighborhoods any better? Have they produced better children? Are they any freer of prejudice? Do they cherish and work for spiritual values for their community, the nation, and the world? These are what will make or break us in our struggle for world leadership. While there may not be any easy academic short cut, I believe there must be a less costly way to sound education. Taxpayers who foot the bills have the right to expect methods that will produce much better education at much lower cost.

\*Ruml was both an outstanding

## Correct Posture Week Is Proclaimed

Even amateur psychologists often can quickly tell—from a person's posture—what that person thinks of himself.

Dr. Charles M. Miller, vice-president of the Baltimore District of the Maryland Chiropractic Association, which is sponsoring Correct Posture Week, May 1-7, declared today:

"A person heavily burdened with fears, guilt complexes, anxieties and worries 'hangs his head in shame'—that is to say carries his head too far forward, causing undue stress on the muscles and nerves of the neck and upper back. This brings on headaches, wry neck, high blood pressure, coronary distress, round shoulders and shallow breathing.

"A person full of confidence, enthusiasm and positive thought and action carries himself well with his shoulders back, head up and with his arms swinging fully at his sides."

Dr. Miller said that shallow breathing is not conducive to a healthy mental attitude, and hence good posture is vastly important to one's mental, as well as physical, well-being.

Among the causes of faulty posture, Dr. Miller said, are: Short leg, either congenital or acquired; unequal pelvic bone structures, arthritis of the spine,

ing educator and an astute businessman. He and the late Donald Morrison, former provost of Dartmouth College were commissioned to study the financial problems of our colleges. The results of this study are reported in "Memo To A College Trustee" published by McGraw-Hill, 1959.

extreme right handedness or left handedness, sagging mattress, abnormal postures assumed on the job, malnutrition, lack of sufficient exercise, enlarged organs, drooped organs, and diseases of the spine, muscles and ligaments.

## TB Seal Sale Reported Highly Successful

Statewide returns in the 1959 Christmas Seal Campaign for the control of tuberculosis totaled \$546,855.26, announced H. Riall Jackson, Chairman of the campaign sponsored by the Maryland Tuberculosis Association. This figure is an increase of \$13,537, or 2.5% over the previous total. County returns totaled \$388,885.50, an increase of \$14,458.07, or 3.9% over the previous year. The Baltimore City campaign, however, showed a decrease. The 1959 total in the city was \$157,969.76, which is \$915.53, or 0.6% less than the \$158,885.29 contributed last year.

The Christmas Seal campaign supports a year-round program of TB control work, Mr. Jackson explained. "Included are casefinding activities, various educational programs, medical social work services, special services to patients and research programs," he said.

He then added, "Of our total, 94% is used right here in Maryland; only 6% is contributed to the National Tuberculosis Association to support its work. Of this allocation, 1% is used for national research projects. When you realize that all states contribute 1% of their totals, the amount is large indeed. In addition, the Maryland Tuberculosis Association allocates nearly \$50,000 for research, medical education and the support of other projects.

"We are indeed grateful to the Marylanders who give us their support," Mr. Jackson stated, "and we guarantee to do our best by them. I can't say too strongly that there's a lot for us to do. The TB problem in Maryland—and particularly in Baltimore City—remains among the most severe all over the country. We are still an extremely high-incident TB area. We're going to do everything we can to correct this and will have a lot to say about our future program at our 56th Annual Meeting this week at the Harundale Mall."

Mr. Jackson concluded by thanking volunteer workers all over the state who helped with a multitude of assignments throughout the year.

## Soil Bank Acreage Shows Increase

A national total of 6,318,000 new acres has been added to the Soil Bank Conservation Reserve for 1960, according to a report received at the Maryland Agricultural office. This surpasses the annual Stabilization and Conservation acreage goal for the pro-

gram year by more than 1 million acres. The new figure brings the cumulative national totals that will be in the Reserve in 1960 to 28,432 acres of cropland.

The larger acreage accepted for contracts, ASC officials say is largely the result of two factors: (1) conservation practices are being established more economically than in the past; and (2) per acre annual payment rates under 1960 contracts are lower than anticipated.

Approximately 70 per cent of the farmers placing new land in the program for 1960 elected to come in on a "whole farm" basis, that is, to place all their eligible cropland under contract, according to William L. Dudley, Chairman of the Maryland ASC Committee.

The new Conservation Reserve participation will be particularly heavy in 1960 in wheat-producing areas, Mr. Dudley said. The five leading States in new 1960 acreage—accounting for more than a third of the total—are Kansas, North Dakota, Oklahoma, South Dakota, and Texas, all major wheat states. The report shows that during the 1960 crop season the Reserve will contain more than 3 million acres formerly devoted to wheat.

In Maryland, the current progress report shows that 18,290 new acres will be under Conservation Reserve contracts in 1960, bringing the cumulative total to 85,115.

Some workers have lots of "get-up-and-go" when it's time to get up and go home. Yes, sir, they're the ones who get "fired with enthusiasm."

Many a guy has the habit of saying, "Well, I'm going to tell you the truth . . ." Makes me wonder what he has been telling me.



Any size of type on any size RUBBER STAMP from the very smallest to the very largest.

Hi-quality RUBBER STAMPS ruggedly built to last you years and years longer.

Fast service at prices far below what you would ordinarily expect to pay.

Come in and see us on any RUBBER STAMP needs that you may have. We also have a wide selection of MARKING DEVICES for your business and private needs.

CHRONICLE PRESS  
Emmitsburg, Md.

## SCRATCH PADS BY THE POUND!

No Need to Use Expensive Tablet Paper for Scrap Paper Now. Various Assortment of Scratch Pads in Different Colors, Sizes and Weights. Reasonably Priced at 20c a pound.

CHRONICLE PRESS & ASSOCIATES

Phone HI. 7-5511 Emmitsburg, Md.

## ATTENTION!

Members of the  
Gettysburg Moose



—FREE PRIZE GAME EVERY FRIDAY NIGHT—  
Free Prizes Awarded — Come in and Win!

DANCE THIS SATURDAY NIGHT  
WALTER CARL'S ORCHESTRA

—Entertainment and Floor Show—  
Groff Agency, York, Pa.

## Milestone Shared



Actress Shirley Temple and Hollywood's famed Brown Derby Restaurant share a mutual anniversary this year—their thirtieth birthday. Shirley was born in 1929, the year the Brown Derby opened its doors to a film-star clientele. Shirley, pictured in the renowned restaurant with her young son, Charles, is taking a last look at familiar surroundings, for the Brown Derby is undergoing complete remodeling, inside and out. In another twenty-five years, young Charles may be sitting in the "new" Derby, feeling the same nostalgia his mother does today.

## People, Spots In The News



HOPEFUL note for Orlando, Fla. subdivision residents fleeing flood is struck by street signpost.



75 YEARS' progress in home thermostats: Minneapolis-Honeywell's original "damper flapper" at right (1885) and new "round" 1960 model that marks company's Diamond Jubilee year.



'ALPINE SCENE' in Kansas is actually view of rooftop of grain storage elevator, where workmen are clearing 19-inch snowfall that caused one section of roof to collapse.

## Thinking of a New Kitchen?



SEE US...  
for a Home  
Improvement  
LOAN

. . . to make your dream come true!

Would you like to transform your kitchen into the very last word in work-saving, time-saving efficiency . . . give it a bright and cheerful "new look"? If lack of ready cash for the purpose is your problem, we have the answer: a low-cost Home Improvement Loan that you can readily repay out of income!

LOW-COST FINANCING OF OTHER HOME IMPROVEMENTS, TOO

- \* Modern Bathroom \* Extra Bedrooms \* Insulation
- \* Recreation Room \* New Roofing \* Air Conditioning

## The Farmers State Bank

EMMITSBURG MARYLAND

MEMBER OF THE FEDERAL DEPOSIT INSURANCE CORPORATION

3% INTEREST ON SAVINGS ACCOUNTS

## PEOPLES DRUG STORE

"The Rexall Store"

26 YORK ST. GETTYSBURG, PA.

Over 65 Years of Dependable Service

**Rexall ORIGINAL 1c SALE**  
MAY 2, 3, 4, 5, 6, 7  
MONDAY through SATURDAY

- 2 for 70c RO-BALL DEODORANT
- 2 for 60c REXALL ASPIRIN
- 2 for 99c PANOVITE
- 2 for 2.01 MIST COLOGNES
- 89c MI-31 ANTISEPTIC MOUTH WASH
- 79c RUBBING ALCOHOL
- \$3.89 POLYMULTISOL
- 39c QUIK-SWABS
- 1.00 BOXED STATIONERY
- 79c CELLO-PACK WRITING PAPER
- \$1.00 BRITE SET HAIR SPRAY
- \$1.75 DUSTING POWDER
- \$1.00 HAND CREAM
- \$1.00 FAST DANDRUFF TREATMENT SHAMPOO

**BONUS BUYS**  
NOT ON OUR 1c SALE PLAN BUT WONDERFUL BARGAINS  
\$10.95 REX WATCHES  
Men's or ladies' . . . . . 8.88  
\$1.09 Value NYLONS  
Spuntex, 60 gauge . . . . . 59  
43c QUIK-BANDS Sterile adhesive bandages . . 3 for 89  
\$1.59 Value TOOTH PASTE  
Rexall . . . . . 3 tube pack 89  
PICNIC SET  
Plastic, Service for 4 . . . . . 89  
VALIANT CAMERA KIT  
camera, bulb-ejector flash gun, bulbs, film, free bag 3.99

**MONEY SAVERS!**  
NOT ON OUR 1c SALE PLAN BUT SURPRISING VALUES  
\$1.80 PHOTOFASH BULBS  
Westinghouse, No. 5, 12's 1.29  
\$1.89 THERMOMETERS  
Quik-Tel Fever . . . . . 1.09  
29c FACIAL TISSUES  
Rexall, 400's . . . . . 4 for 98  
50c Value FILLER PAPER  
5 hole . . . . . 3 for 1.19  
\$1.29 Value FIRST AID KIT  
Home & Auto . . . . . 88  
TURKISH TOWELS  
Canon  
20 x 40" pastels . . 3 for 1.49  
Plus Fed. Tax on some items.

# TODAY'S meditation

**The Upper Room**  
© THE UPPER ROOM, NASHVILLE, TENNESSEE

THE WORLD'S MOST WIDELY USED DEVOTIONAL GUIDE

Read Acts 13:1-4.  
The Holy Spirit said, "Set apart for me Barnabas and Saul for the work to which I have called them." (Acts 13:2, RSV.)  
In Upper Egypt, Ayyad El Daleel is a devoted elder of a village church. As he was meditating and reading the word of God, he came to these words: "Whom shall I send, and who will go for us?" For him this was a personal call of the Holy Spirit to witness in a more devoted way for the Lord. Since then, he spends three days of each week in his fields looking after his business. He spends the other four days each week visiting churches. He visits about forty churches every

year, most of which have no pastors. He pays his own expenses and in many cases helps financially the churches he visits.  
During the "Lord's four days" he visits the church members and others also. He sings, reads from the Bible, and prays in every home. In the evening he practices in the church with all seats occupied. Through his witness, many souls have confessed their faith in Christ and joined the church.  
Prayer

O God, I know that Thou wouldst have me do something for Thee today. Help me to forget my desires in order to do Thy will. Help me to forget my comforts till I see others comforted in Thee. In Christ's name and for his sake. Amen.

**Thought For The Day**  
As a Christian, I will do something for God today.  
Menis Abdul Noor (Egypt)

**ADMINISTRATOR'S NOTICE**  
This is to give notice that the subscriber has obtained from the Orphans' Court of Frederick County, in Maryland, letters of Administration on the estate of

**GEORGE C. NAYLOR**  
late of Frederick County, Maryland, deceased. All persons having claims against the deceased are warned to exhibit the same, with the vouchers thereof, legally authenticated, to the subscriber, on or before the 11th day of October, 1960 next; they may otherwise by law be excluded from all benefit of said estate. Those indebted to the deceased are desired to make immediate payment.

Given under my hand this 4th day of April, 1960.

**G. WILBUR NAYLOR**  
Administrator  
**AMOS A. HOLTER**  
Attorney

True Copy—Test:  
**THOMAS M. EICHELBERGER**  
Register of Wills for Frederick County, Md. 4/8/60

the "Were You Counted?" forms will speed up the compilation of preliminary population figures for the area.

Preliminary figures presenting the total population of incorporated places of 10,000 or more population, and for counties, will be issued as soon as the district supervisor is convinced that a complete count has been made. Final detailed population figures will be issued in Washington later this year after the returns have been tabulated on the Census Bureau's electronic computers.

The importance of a complete count was stressed by the district supervisor. He pointed out that the population figures compiled in the current census must stand as official until the next Federal Census.

"Federal funds are allotted to States and State funds, in turn, are allotted to counties and municipalities on a per capita basis. So a short count means a short allotment. Thus, it is imperative that we have a complete count. The help of every resident of the area is needed to reach this goal," he said.

Meanwhile, the second stage of the census is in full swing, according to the supervisor. This calls for the filling out and mailing the special "blue" household questionnaire which was left at every fourth household during the first stage of the census. This questionnaire contains the questions which are asked of 25 percent of the population in order to save the cost of a complete canvass.

Bald eagles are so named because of the effect of the white feathers on their heads.

## OUR STATE UNIVERSITY

The University of Maryland has been named the recipient of a grant of \$216,000 from the National Aeronautics and Space Administration to accelerate its program of basic research dealing with the growth and metabolism of unicellular algae.

Since 1949, personnel in the botany department, under the direction of Dr. Robert W. Krauss, professor of plant physiology, have been engaged in fundamental studies on the physiology of algae. During this time, a number of problems dealing with the nutrition and maximum growth rates of many strains of algae have been under investigation.

These studies have been of particular interest in recent years when scientists have been forced to consider the challenge of main-

taining men in space for protracted periods of time. The algae characteristically liberate oxygen and absorb and reduce carbon dioxide. This is the reverse process of human respiration where oxygen is consumed and carbon dioxide liberated.

If plants are to be employed in such a system they will need to be capable of rapid rates of growth and high rates of oxygen evolution. Furthermore, they will need to be grown in very compact apparatus in the absence of soil and be susceptible to handling in apparatus more familiar to the chemical engineer than to traditional agriculturists.

A second characteristic of algae has been their remarkably high nutritive value. Experiments carried on jointly with the National Institutes of Health have shown that the amino acid complement of certain algae is unrivaled among single sources in its nutritive value.

Dr. Krauss has emphasized, however, that our knowledge of fundamental facts concerning the algae is not yet adequate for a satisfactory evaluation of their future role in space vehicles.

For this reason, the studies at the University of Maryland will be directed toward adding to our store of information regarding the fundamental biochemistry and growth characteristics of a number of selected strains of algae rather than toward the design of apparatus for possible use in space.

The man who lives by the golden rule today never has to apologize for his actions tomorrow.

Six hundred sixty-nine newspapers are purchased in the United States every second of every minute of every hour of every day.

## Adding Machine Tape

Quantity Discount

**Chronicle Press**

Phone HI 7-5511

## Springtime...



a time for NEW things  
An ideal time to give yourself a NEW

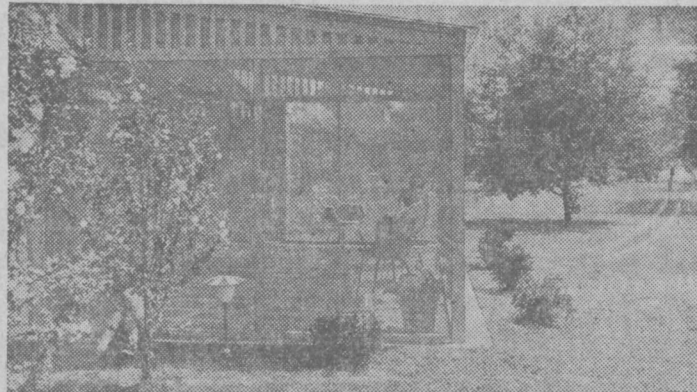


You'll enjoy this new rotary-blade approach to electric shaving!

Other shavers use clipping action. Back and forth. Often pinch, irritate. But Speedshaver's self-sharpening rotary blades go round and round under stationary whisker combs. Smooooth! And the Speedshaver is so easy to clean with its exclusive "Flip-Top" shaving head. Get yours today!

Follow President DeGaulle's visit to the United States on "Journey to Understanding" over NBC-TV Network.  
**NORTH AMERICAN PHILIPS COMPANY, INC.**  
100 E. 42nd St., New York 17, N. Y. Norelco is known as PHILISHAVE in Canada and throughout the rest of the free world.

## "Stretch Your Home"



Millions of Americans living in moderate-sized homes have found that with growing families they simply must have more living space in order to maintain a happy household.

A good investment for such families is to build a screened-in patio at the rear or side of the house. It's a wonderful place for children to play, for entertaining guests, for summertime family meals and even for sleeping. The man who built the patio, shown above, used several Fiberglas materials in achieving his goal: roof panels, screening, chairs, planters, and even the garden lamp outside.

WEAR WHITE AFTER DARK

for the Perfect Wedding..

your invitations and announcements must be flawlessly correct!



Let us show you the

"Flower Wedding Line"... created by Regency!

NATURALLY, they're important to you! That's why we want you to see these invitations for yourself. And please don't let that costly look mislead you... the magic is in the making of these invitations! Feel that fine, sharp raised lettering. It's done by a very special process! Feel the creamy quality of the papers! Check the perfect form of these invitations with people who really know! Come in! We will be happy to show you the "Flower Wedding Line."

We have matching enclosure cards, response cards, and informals!

Priced as low as 50 for \$7.00  
100 for \$10.50 with double envelopes and tissues

Select from 45 distinctive papers and 17 styles of lettering.

CHRONICLE PRESS

Phone HI. 7-5511

Emmitsburg, Md.

## ★ UNITED STATES OF AMERICA ★ 1960 Census of Population

# WERE YOU COUNTED?

The enumeration of Americans in the 1960 Census is now almost finished. As you know, it is very important that the Census be complete and correct. If you believe that you were not counted, please fill out the form below and mail it immediately to:

U.S. Census District Office

(Insert address)



- I have checked with the members of my household, and I believe that one (or more) of us was NOT counted, here or anywhere else, in the 1960 Census.
- On April 1, 1960, I lived at \_\_\_\_\_ (House Number) \_\_\_\_\_ (Street or Road) \_\_\_\_\_ (City) \_\_\_\_\_ (State) \_\_\_\_\_ (Apartment Number or Location)
- This address is located between \_\_\_\_\_ (Name of Street or Road) and \_\_\_\_\_ (Name of Street or Road)
- I am listing below the name and required information for myself and each member of my household.

### PLEASE LIST:

1. Everyone who usually lives in this household, whether related to you or not.
2. All persons staying here who have no other home.

### PLEASE BE SURE TO LIST—

- All members of your family living with you, including babies.
- All other relatives living here.
- Lodgers and boarders living here.
- Servants, hired hands, others not related to you who are living here.
- Anyone else staying here but who has no other home.

### ALSO LIST—

Persons who usually live here but who are away temporarily on business, on vacation, or in a general hospital.

### DO NOT LIST—

- College students who are away at college (or who are here only on vacation).
- Persons stationed away from here in the Armed Forces.
- Persons away in institutions, such as a sanitarium, nursing home, home for the aged, mental hospital.

They will be counted there.

NAMES OF PERSONS LIVING IN THIS HOUSEHOLD ON APRIL 1, 1960, AND THOSE STAYING HERE WHO HAVE NO OTHER HOME			What is the relationship of each person to the head of this household? (For example, wife, son, daughter, grandson, mother-in-law, lodger, lodger's wife)	Male or Female (M or F)	Is this person— White Negro American Indian Japanese Chinese Filipino Hawaiian Part Hawaiian Aleut Eskimo (etc.)?	When was this person born?		Is this person— Married Widowed Divorced Separated Single (never married)?  (Leave blank for children born after March 31, 1946)
Last name (P2)	First name Middle initial (P3)	Month (P6)				Year (P7)		
Write names in this order: Head of household on first line Wife of head Unmarried children, oldest first Married children and their families Other relatives Others not related to head of household (If you list more than 6 persons, use an additional sheet)			Head					

● Name of person who filled this form:

CONFIDENTIAL—The Census is required by the United States Constitution and further authorized by 13 U.S.C. 5, 9, 141, 221-4. The law requires that the inquiries be answered completely and accurately, and guarantees that the information furnished will be accorded confidential treatment. The Census report cannot be used for purposes of taxation, investigation, or regulation.

Form 60PH-16 Budget Bureau No. 41-6002 Approval expires 12-31-60

## SPORTS AFIELD

By Ted Kesting

The strongly growing interest in fly tackle has brought into focus an increasing number of anglers fly-fishing for trout. Here are some tips for the new fly-fisherman—or the angler who got off on the wrong foot and needs a refresher course.

Some anglers on the West Coast who fish for large steelhead will often believe they need a powerful nine-foot steelhead rod, states Jason Lucas, Angling Editor of Sports Afield Magazine. This is but another name for the "bass-bug" rod. The city visitor to the steelhead river will very likely be found using one of those nine-foot rods, but the expert local angler, who knows at least five times as much about steelhead, almost invariably use a much lighter trout rod not over eight feet. So get a rod of eight feet—maybe only 7½ feet.

What type of action should this rod have? In the maker's catalog it will probably be described as "medium trout action." This means a true dry-fly action, which is what you want.

For perhaps 98 per cent of the fishing done in this country, the newer, long-floating type line is recommended. A C level line is the cheapest, and will fit this rod. For dry flies only, a HCH is best. For most distance and ease with trout flies, use a GBF with a long front taper. If you mean to cast bugs sometimes, it should be a GBF with short front taper; real-

ly, this will serve almost as well as the last mentioned for wet flies, and will even do for dry flies by using a long leader.

Any reel that will hold your line comfortably without damaging it will do. The fly reel has nothing to do with the cast; it's merely something to keep temporarily unused line out of the way. An almost exactly equal number of automatic and single-actions are sold, but the veteran angler almost invariably prefers a single-action.

A monofilament tapered leader is necessary in dry-fly fishing, and is strongly recommended for wet-fly fishing too. The butt should be around two thirds the size of the line it joins or this leader won't straighten well on a cast. A 7½-foot leader is perhaps best for the beginner, but as soon as he gets to be a fairly competent caster he might start using a nine-foot leader.

Generally speaking, the flies that are best for some stream in California are also good for a river in Maine. But size is extremely important, so anglers should have one pattern in several sizes. The beginner invariably uses flies too large for where he fishes, and so catches few or no fish. For the ordinary stream with pretty small trout, 10s, 12s and 14s should get you by pretty well; of course you'll need larger for steelhead or other large trout. But remember that the over-all size of the fly counts more than its number; a No. 16 spider or bivable is huge compared to a No. 16 nymph.

A person with charm is one who can make another feel that both of them are pretty wonderful people.

## Confusion Exists Over New Tax Form

Employers seem to have some misunderstanding concerning the new card Form 941, furnished them for reporting their Social Security and Withholding taxes for the first quarter of 1960, according to Irving Machiz, District Director of Internal Revenue for the Baltimore District.

The new forms consist of a card for reporting the Withholding and Social Security taxes due, along with a Separate Schedule A. Many employers are filing the card form only. To insure proper credit for Social Security taxes deducted by the employers for the employees, it is imperative that both the Form 941 and the Schedule A be filed, and remittance enclosed, Machiz said. The Form 941 and Schedule A for the first quarter are due by May 2, 1960.

The Director requested that employers be certain the name and address on the Form 941 as well as on Schedule A, are correct.

Employers who have not received forms should request them from the District Director's office, Baltimore 2, Md., indicating the name, address and identification number of the employer.

Mr. Machiz advised that full remittance of the tax must accompany the return.

He further stated that employers whose Social Security and Withholding taxes exceed \$100 per month must make monthly deposits of those taxes in a Federal Depository Bank, and when filing the return the depository receipts from the bank (Form 450 or 537) should be attached to the return for proper credit.

Many a housewife spends two hours a day telling her neighbor she doesn't have enough time to do her housework.



Disabled workers under 65 should get in touch with their local social security office immediately, if they have not already done so, says W. S. King, Manager of the Hagerstown District Office.

Disabled workers between the ages of 50 and 65 and their dependents are now eligible to monthly benefits under social security. To be eligible for these benefits the worker must have been employed or self-employed in covered work for at least five years out of the ten years before the disability began. The impairment must be expected to continue indefinitely and must be severe enough to prevent the individual from doing any further substantial gainful work.

Those workers under 50 who become severely disabled should contact the social security office to freeze their earnings record. This is important to protect their rights to future benefits or benefits to their survivors in case of death. Mr. King reminds disabled workers that they cannot draw benefits or protect their rights by the freeze unless they file a claim with their social security office.

If you are a disabled worker under 65, get in touch with the Hagerstown social security office to find out about your rights under the disability provisions under the Social Security Act.

## Social Work Education Program Approved At Local College

Sister Hilda Gleason, Ed.M., President of the College, announced this week that Saint Joseph College, Emmitsburg, has been approved for constituent membership in the Council on Social Work Education.

Saint Joseph College will now be among the 110 undergraduate departments of colleges and universities offering programs introductory to professional social work.

Gilbert L. Oddo, Ph.D., Chairman of the Department of Social Studies and Pre-Social Work will administer the program and will be listed officially in the Directory of Constituent Members.

Through membership in the Council on Social Work Education

Saint Joseph College will participate actively in the work of promoting and improving undergraduate education in the field of social welfare. Sister Bernadette Armiger, M.S., Assistant Professor, has been named the college representative to the House of Delegates of the Council on Social Work Education for a three-year term.

It's unfortunate that the symptoms of fatigue and of laziness are practically identical.



Behold, I stand at the door, and knock; if any man hear my voice and open the door, I will come in. — (Revelation 3:20)

As closely as He stood beside His disciples, Jesus, Son of God, stands beside us today. His hand outstretched to raise us, help us—if we will but renounce our sins and open the door of our penitent hearts.



JOIN the MARINES

## GETTYSBURG'S FANTASYLAND

The New, Fabulous STORYBOOK PARK OPEN DAILY



FANTASYLAND'S NEW ADDITIONS—Fabulous 1865 Steam Train ★ 19th Century Train Depot ★ 74-foot Tunnel ★ Lollipop Tree ★ Gum Drop Bushes ★ Leprechaun Apartment ★ A Real Railroad Caboose.

Free Parking—Open Daily 10 A.M. Till Dark Located Route 134, The Taneytown Road

## Thrift Important, Star Tells Teens



Sandra Dee, young star at Universal Studio, hands cash for her savings account to Frank Jogerst, treasurer of the Universal Studio Credit Union. "It's easy for all of us here at Universal to save because the credit union is close at hand," Sandra says. "Many people—particularly teenagers—think all of us in Hollywood just spend everything we get.

But that isn't true. Actually, most of the stars set up a regular saving program because they know the time will come when they'll need cash for a rainy day. In our family, we've always been taught to save a little bit of everything we earn.

"Aside from being sensible, it's really a good feeling to see your savings grow. That's why I belong to the credit union."

Thursday, October 15, is International Credit Union Day, the 110th anniversary

of these nonprofit thrift associations.

Credit unions started in Germany and spread to North America in 1900. Since then, they've grown to a worldwide movement, with 26,000 credit unions and 13 million members, who save together and make low cost loans to each other for good purposes. Each credit union is entirely owned and operated by its members, and officers must serve without pay, except for the treasurer.



HISTORIC SETTING. The 142nd race meeting at Pimlico will open May 6 with the Baltimore track's famous members' clubhouse as backdrop for 12 days of sport through May 21. The plush Victorian structure, built for Pimlico's autumn meeting in 1870, is the oldest building in racing.

**FIRST CLASS** with an **A-1** USED CAR!

- 1959 Ford Country Sedan V-8; Fordomatic; R&H.
- 1958 Ford Custom 300 Fordor.
- 1958 Ford Custom Ranch Wagon.
- 1956 Ford Fairlane Fordor, fully equipped; Fordomatic; R&H, V-8; extra clean.
- 1956 Ford Tudor V-8; R&H; very clean.
- 1955 Mercury 2-Dr. Hardtop; V-8; R&H; P.S.
- 1955 Ford Fairlane Fordor V-8; R&H.
- 1955 Plymouth 4-dr. V-8; Overdrive.
- 1955 Buick Riviera H-Top; R&H; extra clean.
- 1954 Pontiac 4-dr.; Hydramatic; R&H.
- 1953 Rambler Station Wagon.
- 1952 International Pickup; long bed.
- 1954 International Pickup; low mileage; very clean.
- 1949 Ford ½-ton Pickup V-8; very good condition.

## Sperry's Garage

Phone HL 7-5131 Emmitsburg, Md.

SALESMEN: John S. Hollinger, Robert Gelwicks



Governor J. Millard Tawes has proclaimed April 30, 1960, "SAFETY PATROL DAY" in Maryland. Present at the signing of the proclamation in the Governor's office were, left to right: Rt. Rev. Msgr. Leo J. McCormick, Superintendent of Catholic Education; William Anthony, State Supervisor of Safety Education; Lt. Hugh I. Kavanagh, Jr., Maryland State Police and Paul E. Burke, Executive Director of the Maryland Traffic Safety Commission.

Governor Tawes in proclaiming April 30, "Safety Patrol Day" in Maryland prepared the following safety hints for parents:

1. Select the safest, most protected route and go over it with the child, explaining hazards and reasons for crossing where you do.
2. Choose intersections protected by policemen, safety patrol boys or girls, stop and go signals.
3. Teach the child to cross an unprotected street with great care, and
4. Explain the danger of running into the street.

The Baltimore Oriole Baseball Club in cooperation with the Maryland Traffic Safety Commission, the Baltimore Safety Council and the Automobile Club of Maryland will have as their guests 25,000 Safety Patrol boys and girls from Baltimore and the Counties of Maryland on April 30th when they play the "New York Yankees".



## "PLEASE, OPERATOR, WHAT TIME IS IT?"

Every five minutes the little boy would call and ask the same question . . . "Please, Operator, what time is it?"

But something about the little boy's voice told Operator Lola Caldwell that this was no childish prank. Finally, she asked him to call his mother to the phone.

"She can't come to the telephone," he said. "My little sister swallowed a button this morning, and my mother had to take her to the hospital. And she told me not to dare leave the house till twenty after eight. I looked and looked, and honest, Operator, I don't see any twenty on that clock. And I'm afraid I'll miss my school bus."

"Don't worry, young man," said Mrs. Caldwell. "I'll call you when it's time to leave." At 8:20 she rang and sent the little boy off to meet his bus.

To Lola Caldwell, this was all part of a day's work. Another example of the personal interest telephone people take in their customers. This instinctive desire to help is one of the things that make your telephone service so valuable.

THE C & P TELEPHONE COMPANY OF MARYLAND  
Serving You Well Is Our Business

### Looking Ahead

...by Dr. George S. Benson  
DIRECTOR - NATIONAL  
EDUCATION PROGRAM  
Searcy, Arkansas

**Time For Action**  
Representative Craig Hosmer of California and Senator Prescott Bush of Connecticut have introduced a joint resolution in Congress calling for application of the Monroe Doctrine to halt the take-over of Latin American countries by international Communism. It would empower the United States to act in self-defense under Article 51 of the U. N. Charter in any Latin American country threatened with Communist take-over. It would provide for immediate action in Cuba.

The joint resolution now rests in the Foreign Affairs Committees of the Senate and the

House. American citizens should make known to Congress their opinion on this important legislation. Alarmed at developments in Cuba and other Latin American countries in which the Communists have deeply penetrated, Congressman Hosmer announced his resolution with the following statement: **Clear And Present Danger**

"Threats by international Communist to leap-frog the Atlantic and take-over countries of the Western Hemisphere both by infiltration of existing governments and by seizing control of liberal revolutionary movements constitutes a clear and present danger. In asking for prompt Congressional and prompt Administration action on the doctrine of the Joint Resolution, I am seeking United States initiative and action to stop the Reds now, before it is too late. Unless we do so, we permit the stage to be set for a series of Red 'back-door' take-overs that eventually could engulf not only the Americas, ourselves, but the entire free world as well.

"Simply stated, the Joint Resolution does the following:

"(1) Recognizes the vital danger to all American nations of a direct or indirect intervention by international Communism into any one of them.

"(2) Re-affirms the Monroe Doctrine's warning to European nations to keep 'hands off' the two American continents.

"(3) Applies the Monroe Doctrine to international Communism, whether operating openly or under subversive disguise. **In Self-Defense**

"(4) Labels any direct or indirect intervention by international Communism anywhere in the New World as a danger to peace and security of all American states justifying immediate exercise of these nations' inherent right of self-defense.

**Final Week of Racing At Laurel Track**

The final full week of racing at the current Laurel spring meeting will be climaxed on Saturday with the third running of the \$15,000 added Maryland Derby.

An exclusive stake for three-year-olds foaled in Maryland, the race this year will be run out of the new mile chute for the first time. For the past two years the home bred Derby sent the sophomores in a mile and sixteenth chase.

Foremost among the twenty nominations is Alfred Vanderbilt's brilliant Idolater, winner of the Chesapeake Stakes last week. However, the grey son of Mahmoud and Iriseen competed in the Wood Memorial at Aqueduct this past Saturday, and is not expected to van back here to Laurel for the local Derby.

A stickout in the field, Idolater's absence would throw the contest into a wide open struggle. Among the nominees who have been racing this spring with better than average success include: J. Frank Abell's Knight-King, Mrs. George Brown Jr.'s Lady Maid, Alan T. Clarke's Leemowlee, Paul Cresci's Creswood Dottie, John Hoy's Adapt, Paul Rofuss' Comet Foot,

**State Hospital Will Sponsor Open House**

Springfield State Hospital, at Sykesville will have Open House on Wednesday, May 4, 1960, in the Geriatric Building, beginning with registration at one o'clock. As in the past, this is held to share in the celebration of National Mental Health and Hospital Week. After registration, the program will be opened with invocation by the Hospital Chaplain, Rev. Joseph T. Riley, followed by greetings of welcome by Dr. Robert E. Gardner, Superintendent. Promptly at 1:45 p. m. a panel discussion "The Mental Hospital and the Community - A New Team" will begin. The participants of this panel will consist of representatives of Public Health Departments, Instructive Visiting Nurse Association, and hospital staff. Dr. Forbes H. Burgess, Frederick County Health Officer, will be the representing panel member of this county. The moderator will be Dr. Gertrude Gross,

Mrs. Danny Shea's Cold Cut, the Southfield Farm's Noops, Ray Vogelmann's Bad Man and Elba, Mrs. Louis Lee Voigt's Vanairiss, Janice Wasserman's Royal Pincher and Ben Weiner's Donna River.

Of this lot, Cold Cut, a well striding son of Loser Weeper and Sageness, was a smart winner in his last start here, while Creswood Dottie won the Maryland Futurity and the Pimlico Breeder's stakes last fall. Trained by the capable Bowes Bond, the latter is owned by the former University of Pennsylvania grid star, Paul Cresci, and is named for his wife.

Springfield State Hospital staff. Immediately following this panel, there will be conducted tours of the hospital and department heads will be available to visitors to answer any questions they might have pertaining to hospital or any respective department.

The members of the Woman's Auxiliary of Springfield State Hospital will serve refreshments at the conclusion of the program.

The public is cordially invited to attend Open House at Springfield.

**Blossom Purse Saturday At Shenandoah**

CHARLES TOWN, W. Va. — Shenandoah Downs will run the second annual Apple Blossom Purse this Saturday, saluting the world-famous Apple Blossom Festival in nearby Winchester, Va.

Miss Shenandoah Valley, selected from among beauty queens of more than 20 cities in the Valley area, will officiate at the Apple Blossom Purse, presenting a trophy to the winning owner. The race will carry a purse of \$2500 and will be a 5 1/2 furlongs for four-year-olds and up.

Shenandoah Downs, which conducts a 31 - night thoroughbred meeting through May 21, went on daylight savings time Monday, General Manager Bob Leavitt reminded fans today. Post time at the \$4 million plant here is 7:15 p. m.

**Always PLENTY of HOT water!**

Happy Cooking Automatic GAS WATER HEATERS

**MATTHEWS GAS CO.**  
Emmitsburg  
Thurmont

**Business Services**

PATRONIZE our Advertisers. These firms are reliable and have proven through the years that they handle only quality products and offer skilled professional service and advice to their patrons.

BIRTHDAY  
WEDDING  
ANNIVERSARY  
GIFTS  
**BLOCHER'S**  
"Jewelers Since 1887"  
25-27 Chambersburg St.  
GETTYSBURG, PA.

**DR. R. P. KLINGER, JR.**  
Optometrist  
19 East Main Street  
EMMITSBURG, MD.  
EYES EXAMINED  
GLASSES FITTED  
Complete Optical Repairs  
—HOURS—  
Monday and Friday  
10 A. M. to 9 P. M.  
PHONES:  
EMMITSBURG HI 7-5191  
WESTMINSTER TI 8-8340

**C. E. WILSON**  
Funeral Home  
EMMITSBURG, MD.  
Phones:  
Emmitsburg 7-4621  
Fairfield 6

Fast and Dependable  
**Prescription Service**  
Accuracy  
Comes  
First  
•  
Your Retail  
Drug Store  
**Peoples Drug Store**  
York Street, Gettysburg

**Dr. D. L. Beegle**  
CHIROPRACTOR  
EMMITSBURG, MD.

Exclusive new discovery whips extra smoothness into

**Schenley**  
WHISKY



\$1.50 1/2 Pt.  
\$2.98 Pint  
\$4.70 4/5 Qt.  
\$5.85 Quart

SCHENLEY DIST. CO., N. Y. C., BLENDED WHISKY, 86 PROOF • 65% GRAIN NEUTRAL SPIRITS



**PREAKNESS TROPHY.** Pimlico's Woodlawn Vase will be 100 years old when the \$150,000 Preakness is run there on Saturday, May 21. Weighing 29 pounds and standing nearly three feet tall, the Vase was made by Tiffany silversmiths in 1860 and is now valued at \$33,000. A replica is given the owner of the Preakness winner.

**DRAT!**  
I WANTED TO HANG OUT MY LAUNDRY TODAY BUT IT'S RAINING...

**BAH!**  
I NEEDED THOSE SHIRTS TODAY...

**SAY!**  
WHY DON'T WE GET A CLOTHES DRYER...

**BY GEORGE!**  
THAT'S A GRAND IDEA! AN ELECTRIC CLOTHES DRYER... IT'S CLEANER AND SAFER...  
NO SMOKE  
NO SOOT  
NO FUMES

**GO ON** ... TAKE ANOTHER STEP INTO THE ALL-ELECTRIC FUTURE ...  
GET A CLOTHES DRYER FROM YOUR APPLIANCE DEALER OR -  
THE POTOMAC EDISON CO.

**My Neighbors**  
DEPT. OF AGRICULTURE  
SOIL BANK  
DIVISION

"Got a little old five acres in downtown Dallas - how much will you pay me not to raise corn?"

- ROAD STONE
- FREE STATE MASONRY MORTAR
- READY-MIXED CONCRETE
- MASONS' LIME
- AGRICULTURAL LIMING MATERIALS

**M. J. GROVE LIME COMPANY**  
Phone Thurmont CR 1-6381 — Frederick MO 2-1181

**USED CARS**

1959 Chevrolet Belair 4-dr. Sed.; R&H&A; P.S.; like new.  
1958 Pontiac 2-dr.; R&H&A.  
1957 Chrysler Windsor 2-Dr., fully equipped.  
1956 Buick 4-Dr. Station Wagon; fully equipped.  
1953 Buick Century 2-dr. Htop; R&H&A; PS; PB.  
1953 Ford 4-dr. Sedan; R&H.  
1953 Chrysler 4-dr.; R&H; P.S.; good condition.  
1951 Buick 2-Dr.; R&H.

LEE TIRES & TUBES

**SANDERS BROS. GARAGE**  
—GUARANTEED USED CARS—  
PHONE HI 7-3451 EMMITSBURG, MARYLAND

**BE REALLY REFRESHED AROUND THE CLOCK!**

Here are four easy ways to serve "Fancy Franks." 1) Slice a hot frank, stuff with cole slaw. 2) Roll frank in slice of mustard-spread bread. Fasten with wooden pick, brush with melted butter, brown in hot oven. Add olives. 3) Mix relish into canned baked beans, pile into sliced frank, pop in hot oven. 4) Put hot frank in bun with slice of dill pickle, red sash of pimento. Serve with ice-cold King Size Coca-Cola. Only Coca-Cola gives you that cheerful lift...that cold crisp taste that brightens any bite.

Serve this Hors d'Oeuvres Pie for a midnight snack with King Size Coca-Cola. Just take a center slice out of a round loaf of dark or white bread. Decorate with a circling of devilled ham and egg salad. Mix yellow pasteurized processed cheese spread with softened butter and pipe along the edges with a pastry tube. Garnish with cucumber slices, sliced olives, cream cheese and a radish. Cut into wedges and serve with ice-cold King Size Coca-Cola!

**TRY THESE TEMPTING TREATS WITH BIG KING SIZE COKE!**  
REG. U. S. PAT. OFF.

Bottled under authority of The Coca-Cola Company by  
**FREDERICK COCA-COLA BOTTLING CO., INC.**  
1801 N. Market Street Phone Monument 2-2571  
NELSON E. LANGAN Manager

smart people are want-ad minded!

FOR SALE All Types of Awnings ALUMINUM SIDING STORM WINDOWS - DOORS Fern Ohler - Gettysburg, Pa. Phone EDgewood 4-4612 L. P. GUNSON & CO. Seedman of Quality Since 1888 Over 400 varieties of certified hybrid vegetable and farm seed Highest possible purity weed free seed and top germination. Ask to see our replant agreement CHARLES B. SHORB Agent Phone HI. 7-2121 Emmitsburg Maryland 4/8 1tp 4/15/3t

FOR SALE - Apartment - type Frigidaire, \$100; apartment-type electric range, Frigidaire, \$75. Phone Taneytown PLYmouth 6-6562 FOR SALE - 8-rm. house, 2 complete baths, oil fired hot water heating system, zoned and electrically wired for 2 apts. Full cement basement, aluminum storm windows, awnings and insulated. Modern kitchen. Corner lot, 60x176, all in lawn and fence with garage; located at 125 DePaul St. Shown by appointment only. Call Fern Ohler. Gettysburg, Pa., phone EDgewood 4-1696.

FOR SALE - Maytag automatic washer, very good condition. John S. Hollinger, phone HI. 7-4691. Pfister Associated Growers Inc. Quality you can see Performance you can Measure 15.776 Yield Test Prove P A G Returns up to 50 dollars extra profit per bag of seed 25 different varieties CHARLES B. SHORB Agent Phone HI. 7-2121 Emmitsburg Maryland 4/8 1tp 4/15/3t

FOR SALE - ABC Deluxe wash machine with twin tubs, good as new. Phone HI. 7-3641. Guy Warren, W. Main St., Emmitsburg. 4/29/2tp FOR SALE - 1 acre near Emmitsburg; good house, hot w. furnace, h.w. heat; built-in kitchen unit, 7 rms. and bath; new 3-car gar.; good water, automatic hot and cold. J. WARD KERRIGAN - Real Estate Broker - Phone HI. 7-3161

FOR SALE - 50-acre farm, two miles out of Taneytown, 6 room house, water and electric, rich level land and nice view of Taneytown, priced \$10,000 - will sell or trade on house and lot. 5 room bungalow in Emmitsburg, hot water heat, modern bath room, large lot and garage, priced \$10,000. 7 room home, remodeled, new floor, plaster, new modern bath, hot water furnace, cement basement, nice lawn, garage, 30x30, 1 acre of land. 3 miles from Emmitsburg, \$11,500. Phone HI. 7-5101, Realtor, Richard M. Culison, Drive-In Real Estate, 12 1/2 E. Main St., Emmitsburg, Maryland.

NOTICES NOTICE - Emmitsburg homeowners! When you are ready to connect to the new sewer line contact us for free estimate to do the complete job. Ralph W. Stonesifer, phone PLYmouth 6-6454, Keymar, Md. tf TAKE soil away the Blue Lustre way from carpets and upholstery. It's the finest. Zurgable Bros. 1t FOR RENT - 2nd floor apartment, private entrance, 3 rooms and bath, gas & electric furnished. Swiss Chalet Apartments, phone HI. 7-2251. tf

WANTED - Waitress and dishwasher for restaurant, also full time attendant for service station. Apply Fitzgerald's, Route 15 north. 1t NOTICE - Menchey Music Service, 430 Carlisle St., Hanover, has a reputation for selling fine quality pianos at fair prices and for giving complete satisfaction in service. Rely on this reputation when you buy a piano or organ. Choose your instrument from our large selection. You always buy - and save - with confidence at Menchey's.

(Approved Singer Dealer) Phone 7-2273 SEWING MACHINES VACUUM CLEANERS APPLIANCES EMMIT SEWING CENTER 402 W. Main St. - Emmitsburg WANTED - Concrete work of all kinds: porches, patios, cellars, walks, etc. Call after 5 p. m., Monument 3-4296. Free estimate at no obligation. 4/29 4tp

WANTED - Housekeeper - companion to stay with elderly lady. Please give references, experience, and salary. Write Box C, Emmitsburg Chronicle, 4/15/2t WANTED TO RENT - House with bath in Emmitsburg or near town by family with children. Phone HI. 7-5654. 1tp

NOTICE - Lawn mower sharpening and general repairing. New models on sale: 20", \$54.50; 22", \$59.95; 25" self-propelled, \$69.95. Corney's Mower Service Old Frederick Rd. Phone HI. 7-2119 FOR RENT - Unfurnished apartments. Apply Mrs. G. R. Elder, phone HI. 7-5511. tf

WANTED - Lady to clean on Tuesdays. Apply Green Parrot Tea Shoppe. 1t WANTED - Scrap Aluminum, Copper, Brass, auto radiators, and other non-ferrous metals. Top prices paid. Gettysburg Foundry Specialties Co., Greenmount, Pa., call Gettysburg 884. tf

Pete's Bike Shop West Main St., Cor. Altamont Ave., Thurmont, Md. New and Used Bikes Parts and Service Open Evenings 6:30 - 9:00 o'clock Leon Young - 1tp FOR RENT - 3 bedroom apartment, air conditioned, tile bath, baseboard heat, tile floors, knotty pine paneling thru-out, private entrance, storm windows and doors. Apply Welty's Market, W. Main St. tf

CARD OF THANKS We wish to take this opportunity to express our sincere thanks to those kind people who sent Mass Cards, sympathy cards, floral tributes, expressions of sympathy and for the many other acts of kindness shown us during the recent bereavement of our beloved brother, William T. Rosensteel. Rosensteel Family 1t

Many Utilities Offer Low Rates For Electric Heat Heating with electricity is no longer regarded as a luxury in many parts of the country. Today more and more electric utility companies are encouraging this modern method of heating in new and remodeled homes by providing special, low electric rates. This means that when a house is properly insulated and adequately wired, the cost of electricity for heating compares favorably with other types of heating. Proper insulation is of such importance to economical electric heating that some utilities refuse to grant lower rates to electrically-heated houses without it. The preferred insulation today for electric heating is a 6-inch thickness of mineral wool in the ceiling, a minimum of 3 inches in walls, and at least 2 inches in floors over unheated areas.

Among the advantages of electricity are cleanliness, since no fuel is burned to cause soot or fumes, and control of temperatures in individual rooms. It is particularly ideal for remodeling, since no ductwork or pipes are needed. CHECK GREEN LUMBER Prevent lumber shrinkage by checking for green lumber when delivered. Cut a sliver from the edge of the board. If it snaps cleanly when bent, it's probably dry enough for use. Green wood slivers bend easily and leave ragged edges.

Lutheran Women Meet In Taneytown "Be steadfast, immovable, always abounding in the work of the Lord, knowing that in the Lord your labor is not in vain." I Corinthians 15:58. This was the theme of the Middle Conference of Maryland Synod United Lutheran Church Women which was held at Trinity Lutheran Church, Taneytown, April 21. Mrs. Eugene Young, Jefferson conducted both morning and afternoon devotions. Mrs. Stanley Jennings of the host church extended greetings. Mrs. Raymond Bowers Jr. of the Evangelical Lutheran Church of Frederick, gave the response. The four functional committees headed by Mrs. Robert Daugherty, Mrs. Richard Shanbrook, Mrs. Garland Feaga and Mrs. G. Thomas James, gave their reports in the form of a spring garden. Mrs. Herbert Bowers and Mrs. George Naylor sang a duet - "The Good Shepherd."

Mrs. Herman D. Hammer, the guest speaker, related most interesting experiences of her life in Uruguay, South America as a missionary. Lutherans have been working in Uruguay just 12 years. She said the fields are ripe for harvest, but the laborers are few. Mrs. Carl L. Schaeffer, president of Middle Conference presided at both sessions. The following officers who will serve Middle Conference for 1960-1961 were installed by Mrs. C. F. Trunk Jr.: President, Mrs. Carl L. Schaeffer; vice president, Mrs. Stanley B. Jennings; recording secretary, Mrs. William Kauffman; statistical secretary, Mrs. Paul Dinterman; treasurer, Mrs. Sterling Clabaugh; education chairman, Mrs. Alexander Dow; Christian service chairman, Mrs. Garland Feaga; membership chairman, Mrs. Robert Daugherty; offering chairman, Mrs. C. Thomas James; and publicity chairman, Mrs. Carroll Dougherty.

Named District Engineer With Power Utility Robert F. Deadrick, formerly of Hagerstown, has been named to the post of District Engineer for The Potomac Edison Company here, according to an announcement by PE District Manager J. W. Morgan. He succeeds James F. Abbott, who recently transferred to Winchester as Assistant District Manager for the power company there. Formerly Maintenance and Construction Engineer for PE's Substations and Communications Department in Hagerstown, Deadrick is a graduate of West Virginia University where he majored in Electrical Engineering. He first joined PE in 1950 and was assigned to the Drafting Department at the company's general offices in Hagerstown. After two years experience there, he transferred to the Substations and Communication Department as Junior Engineer. In 1956, following a series of assignments as project engineer on major substations, he was advanced to the position of Maintenance and Construction Engineer, in which capacity he served until his assignment here. As District Engineer for PE's operations, Deadrick will maintain his headquarters at the Line and Engineering Department quarters in Frederick. Mr. and Mrs. Deadrick, parents of one son, will make their residence in Frederick.

Mathias Rally Scheduled A show of solid support in Frederick County for the candidacy of Charles McC. "Mac" Mathias Jr. for the Republican nomination for Congress from the Maryland Sixth District is expected on Saturday, April 30, at a dinner rally to be held at the Peter Pan Inn, Urbana. E. Robert Bowlus, Frederick, general chairman of the dinner, said, the affair will begin with a social hour at 6:30 p. m. and dinner at 7 p. m. The evening will conclude with dancing from 9 p. m. on. Committee officials from the entire county are working on arrangements for the affair which is being billed as "an informal night with Mac Mathias." The Frederick attorney is being opposed in the primary by two Montgomery County residents.

YFC Schedules Speaker Saturday William Bullard, a representative of International Christian Leadership Inc., Washington, D. C., will speak at the Frederick County Youth for Christ rally this Saturday night. The International Christian Leadership organization is the group that sponsors the presidential prayer breakfast and similar activities for our leading statesmen in Washington and throughout the nation. The rally will start at 7:45 p. m. and will be held in the Staley Park field house at the corner of Tenth Street and Motter Ave. Frederick.

State Income Tax Collections Show Decrease Income tax receipts from the Maryland income tax, for the month of March, were somewhat less than they were for March of a year ago, according to a report released by State Comptroller Louis L. Goldstein. However, nine month's totals show that receipts for this current fiscal year are substantially ahead of last year, the Comptroller continued. All withholding receipts for the current fiscal year are at the three per cent ordinary income rate, while in last year's figures, one quarter was at the old two per cent ordinary income rate. This, the Comptroller said, would account for approximately five million dollars of the increased receipts. The State's income tax estimate this year is \$101,479,000 as net after the payment of refunds.

Mount Drops Third Mt. St. Mary's dropped its third straight baseball game last Thursday afternoon when Western Md. pounded out a 17-4 victory on the victor's field. Skip Brown of the Terrors poled four hits, including a grand slam homerun in the seventh inning. Larry Wheeler and Jack Allman each rapped three hits for the Mount, one of Allman's being a homer.

Church Services ST. JOSEPH'S CATH. CHURCH Rev. James T. Twomey, Pastor Fr. Martin J. Sleasman, C.M., Assistant Pastor Sunday Masses at 7:00, 8:30 and High Mass at 10:00 a. m. INCARNATION UNITED CHURCH OF CHRIST (Evangelical and Reformed) John C. Chatlos, Pastor Church School, 9:30 a. m. Worship Service, 10:30 a. m. TRINITY METHODIST CHURCH Rev. Cameron W. Johnson, Pastor Worship Service, 9 a. m. Church School, 10:00 a. m. Junior Choir, 7:30 p. m. PRESBYTERIAN CHURCH Rev. Wm. M. Hendricks, Pastor Church School, 9:45 a. m. Morning Worship, 11:00 a. m. GRACE BAPTIST CHURCH Lower Tract Road Rev. H. N. Brownlee, Pastor Church service, 9:30 a. m. Sunday School, 10:30 a. m. TOM'S CREEK METHODIST Rev. Cameron W. Johnson, Pastor Church School, 9:00 a. m. Worship Service, 10:00 a. m. ST. ANTHONY'S SHRINE Rev. Vincent J. Tomalski, Pastor Masses on Sunday at 7:30 and 9:30 a. m. Confessions Saturdays at 3:30 and 7:00 p. m. ELIAS LUTHERAN CHURCH Rev. Philip Bower, Pastor The Second Sunday after Easter, May 1, 1960. Sunday School, 9:15 a. m. The Service, 10:30 a. m. Sermon, "Green Pastures and Still Waters." The Pastor has announced the calendar of special May and June Services: May 8, Mother's Day; May 15, Cantate, (Music) Sunday; May 22, Rural Life Sunday; May 29, Ascension Sunday; June 5, High School Baccalaureate; June 12, Holy Trinity - Communion; June 19, Vacation Bible School Sunday; June 26, Apostle Peter - Anniversary.

Church Group Holds Meeting The regular monthly meeting of the Woman's Society of Christian Service of Tom's Creek Methodist Church met Monday evening in the social room of the church. Fourteen members and 3 visitors were present and Mrs. Ethel Fuss was in charge of devotions. The devotions were opened with the singing to the hymn "I Need Jesus"; Scripture reading, the 121st Psalm, followed by a solo When Jesus Comes, by Mrs. Virginia Wantz. Mrs. Johnson led the discussion on several chapters of St. Luke, relative to Christ's teachings and His goodness to man; also on holiness taken from Hebrew Chapter 12-14. Prayer was offered by Mrs. Johnson. Following the devotions a short business meeting was held with the president, Elizabeth Fuss, presiding. Hostesses for evening refreshments were Mrs. Anna Grimes and Mrs. Edith Ohler. Mrs. Emma F. Wills, Thurmont, fell and broke her arm Wednesday evening at the home of her daughter, Mrs. Edyth Kelly.

Ocean City Offers Various Employment The Ocean City employment office of the Department of Employment Security, operated each summer to help employers at the seaside resort secure seasonal workers, will open this year on Monday, May 2. The Dept. already has a considerable number of applications on hand from persons, particularly youngsters, seeking summer work in Ocean City. These applications are expected to be sufficient to fill the great bulk of the need for unskilled workers in the area. However, in certain other occupations, shortages probably will develop and an intensive recruiting effort by the Dept.'s 20 local offices throughout Maryland will invite qualified applicants for these jobs to apply directly to the Employment Security Office in their own communities. Workers expected to be in short supply are experienced chefs, cooks, short-order cooks, waiters, domestic maids and chambermaids - with the emphasis on experience.

more FARMERS PLANT DEWALB than any other brand - ORDER NEXT YEAR'S CORN FROM GALL & SMITH PHONE CR 1-4141 THURMONT, MD. Roberts CHEVROLET Franklin-Fulton Co's. Only Authorized WILYS - JEEP DEALER 10TH ANNIVERSARY SALE THIS WEEK GREAT SAVINGS on NEW JEEPS IMMEDIATE DELIVERY Genuine Parts Expert Service Phone 1504 Roberts CHEVROLET So. Potomac At 10th WAYNESBORO, PA.

want proof? 2 MILLION AUTO OWNERS It's a fact that more than 2,000,000 drivers enjoy Nationwide's worry-free driving security. Why? Because policy is non-assessable, with budget-wise 6-month renewal plan, plus top dollar savings. And, it's backed by one of America's "different" insurance companies - Nationwide Insurance. Phone or drop us a line - get the facts free. Office Hours: Wednesday afternoon and evening; Saturday morning.

J. W. Strickhouser Phone HI. 7-4731 Emmitsburg, Maryland NATIONWIDE MUTUAL INSURANCE COMPANY HOME OFFICE - COVINGTON, LOUISIANA

Racing Money To Be Distributed State Comptroller Louis L. Goldstein this week announced that the State received the following revenue from horse racing at the Bowie Race Track from the last 32 days of racing conducted there during February and March of this year: \$1,829,526.88. Inclement weather during March forced cancellation of eight of the 40 days of racing scheduled. These lost days will be made up in future racing schedules.

Flower and Vegetable Plants Burpee Seeds 2-Year Monthly Rose Bushes Scotts Lawn Seed - Turf Builder REDDING'S SUPPLY STORE 30 YORK STREET - GETTYSBURG, PA.

Furniture Specials 3-PC. FOAM RUBBER PARLOR SUITE \$199.95 2-PC. FOAM RUBBER LIVINGROOM SUITE (maple) \$129.95 FOR YOUR OUTDOOR COMFORT Steel Folding Chairs for the lawn \$ 5.95 Chaise Lounges 29.95 Children's Gym Sets 22.95 Hammock Lounge (complete) 11.95 Plastic Wading Pools \$2.98 up COMFORTABLE HAMMOCKS

ZURGABLE BROTHERS HOME FURNISHINGS PHONE HI 7-3784 EMMITSBURG, MD. PUBLIC SALE OF Real Estate-Antiques-Household Goods SATURDAY, MAY 7, 1960 AT 11 O'CLOCK A. M. (D.S.T.) Matters relating to advertisement of sale of personal property of George C. Naylor, deceased, pursuant to an Order of the Orphan's Court for Frederick County, Md., passed in the Estate of George C. Naylor on the 13th day of April, 1960, the undersigned will offer at public sale, located on East Main St. in Emmitsburg, Md., the following: REAL ESTATE Promptly at 2 p. m. the undersigned will offer on the premises formerly occupied by the late George C. Naylor: Two story weather-board house including six rooms and bath, sewerage, town water, oil hot air furnace, two-car garage wood shed, wash house and chicken house. Occupies a lot 60 ft. wide by 175 ft. back to public alley. Terms of Real Estate: A deposit of 10% of the bid price will be required of the purchaser or purchasers on the day of sale. All State, County and Municipal taxes, water rent and sewerage charges assessed against said property will be adjusted as of June 1, 1960. Possession will be given at the option of the purchaser. Final settlement may also be arranged at the option of the purchaser but in any event not later than October 1, 1960. All costs of conveyancing, including Federal and Maryland stamp requisite for the deed, shall be borne by the purchaser or purchasers. ANNA M. SULLIVAN GEORGE W. NAYLOR CLYDE S. NAYLOR CHARLES A. NAYLOR ETHEL G. SIMON MABLE J. HORNBECKER Heirs-at-law of George C. Naylor. SHARES OF STOCK 8 shares of Farmers State Bank, Emmitsburg, Md.; 10 shares of Birnie Trust, Taneytown, Md.; 7 shares of Western Maryland Trust, Frederick, and 10 shares of Southern States. ANTIQUES & HOUSEHOLD GOODS Dry sink, corner cupboard, plank bottom chairs, old cupboard, black iron cook stove, flat irons, coal oil lamps, old picture frames, (2) blanket chests, walnut chest, Hot-point refrigerator, bottle gas stove, radio, washing machine, wash tubs, saw machine, 12-ft. extension table, sideboard, dressers, stands, studio couch, beds and springs, wash stand, high chair, mirrors, living room suite chairs, straight and rockers; library table, desk and book case combine, books bed linen, quilts, rugs, garden tools, garden plow, garden hose, step ladder, double ladder, like new; oil drums, ice cream freezer, slaw cutter, home-made soap, stove wood, lots of tools of all kinds. Lots of dishes, some antique; pots and pans. Many other articles not mentioned. G. WILBUR NAYLOR Administrate of George C. Naylor TERMS OF PERSONAL PROPERTY - CASH. Not responsible for accidents Lunch Rights Reserved GUSS SHANK, Auctioneer ROBERT GRIMES, Clerk

Flower and Vegetable Plants Burpee Seeds 2-Year Monthly Rose Bushes Scotts Lawn Seed - Turf Builder REDDING'S SUPPLY STORE 30 YORK STREET - GETTYSBURG, PA.

Furniture Specials 3-PC. FOAM RUBBER PARLOR SUITE \$199.95 2-PC. FOAM RUBBER LIVINGROOM SUITE (maple) \$129.95 FOR YOUR OUTDOOR COMFORT Steel Folding Chairs for the lawn \$ 5.95 Chaise Lounges 29.95 Children's Gym Sets 22.95 Hammock Lounge (complete) 11.95 Plastic Wading Pools \$2.98 up COMFORTABLE HAMMOCKS

ZURGABLE BROTHERS HOME FURNISHINGS PHONE HI 7-3784 EMMITSBURG, MD. PUBLIC SALE OF Real Estate-Antiques-Household Goods SATURDAY, MAY 7, 1960 AT 11 O'CLOCK A. M. (D.S.T.) Matters relating to advertisement of sale of personal property of George C. Naylor, deceased, pursuant to an Order of the Orphan's Court for Frederick County, Md., passed in the Estate of George C. Naylor on the 13th day of April, 1960, the undersigned will offer at public sale, located on East Main St. in Emmitsburg, Md., the following: REAL ESTATE Promptly at 2 p. m. the undersigned will offer on the premises formerly occupied by the late George C. Naylor: Two story weather-board house including six rooms and bath, sewerage, town water, oil hot air furnace, two-car garage wood shed, wash house and chicken house. Occupies a lot 60 ft. wide by 175 ft. back to public alley. Terms of Real Estate: A deposit of 10% of the bid price will be required of the purchaser or purchasers on the day of sale. All State, County and Municipal taxes, water rent and sewerage charges assessed against said property will be adjusted as of June 1, 1960. Possession will be given at the option of the purchaser. Final settlement may also be arranged at the option of the purchaser but in any event not later than October 1, 1960. All costs of conveyancing, including Federal and Maryland stamp requisite for the deed, shall be borne by the purchaser or purchasers. ANNA M. SULLIVAN GEORGE W. NAYLOR CLYDE S. NAYLOR CHARLES A. NAYLOR ETHEL G. SIMON MABLE J. HORNBECKER Heirs-at-law of George C. Naylor. SHARES OF STOCK 8 shares of Farmers State Bank, Emmitsburg, Md.; 10 shares of Birnie Trust, Taneytown, Md.; 7 shares of Western Maryland Trust, Frederick, and 10 shares of Southern States. ANTIQUES & HOUSEHOLD GOODS Dry sink, corner cupboard, plank bottom chairs, old cupboard, black iron cook stove, flat irons, coal oil lamps, old picture frames, (2) blanket chests, walnut chest, Hot-point refrigerator, bottle gas stove, radio, washing machine, wash tubs, saw machine, 12-ft. extension table, sideboard, dressers, stands, studio couch, beds and springs, wash stand, high chair, mirrors, living room suite chairs, straight and rockers; library table, desk and book case combine, books bed linen, quilts, rugs, garden tools, garden plow, garden hose, step ladder, double ladder, like new; oil drums, ice cream freezer, slaw cutter, home-made soap, stove wood, lots of tools of all kinds. Lots of dishes, some antique; pots and pans. Many other articles not mentioned. G. WILBUR NAYLOR Administrate of George C. Naylor TERMS OF PERSONAL PROPERTY - CASH. Not responsible for accidents Lunch Rights Reserved GUSS SHANK, Auctioneer ROBERT GRIMES, Clerk

ZURGABLE BROTHERS HOME FURNISHINGS PHONE HI 7-3784 EMMITSBURG, MD. PUBLIC SALE OF Real Estate-Antiques-Household Goods SATURDAY, MAY 7, 1960 AT 11 O'CLOCK A. M. (D.S.T.) Matters relating to advertisement of sale of personal property of George C. Naylor, deceased, pursuant to an Order of the Orphan's Court for Frederick County, Md., passed in the Estate of George C. Naylor on the 13th day of April, 1960, the undersigned will offer at public sale, located on East Main St. in Emmitsburg, Md., the following: REAL ESTATE Promptly at 2 p. m. the undersigned will offer on the premises formerly occupied by the late George C. Naylor: Two story weather-board house including six rooms and bath, sewerage, town water, oil hot air furnace, two-car garage wood shed, wash house and chicken house. Occupies a lot 60 ft. wide by 175 ft. back to public alley. Terms of Real Estate: A deposit of 10% of the bid price will be required of the purchaser or purchasers on the day of sale. All State, County and Municipal taxes, water rent and sewerage charges assessed against said property will be adjusted as of June 1, 1960. Possession will be given at the option of the purchaser. Final settlement may also be arranged at the option of the purchaser but in any event not later than October 1, 1960. All costs of conveyancing, including Federal and Maryland stamp requisite for the deed, shall be borne by the purchaser or purchasers. ANNA M. SULLIVAN GEORGE W. NAYLOR CLYDE S. NAYLOR CHARLES A. NAYLOR ETHEL G. SIMON MABLE J. HORNBECKER Heirs-at-law of George C. Naylor. SHARES OF STOCK 8 shares of Farmers State Bank, Emmitsburg, Md.; 10 shares of Birnie Trust, Taneytown, Md.; 7 shares of Western Maryland Trust, Frederick, and 10 shares of Southern States. ANTIQUES & HOUSEHOLD GOODS Dry sink, corner cupboard, plank bottom chairs, old cupboard, black iron cook stove, flat irons, coal oil lamps, old picture frames, (2) blanket chests, walnut chest, Hot-point refrigerator, bottle gas stove, radio, washing machine, wash tubs, saw machine, 12-ft. extension table, sideboard, dressers, stands, studio couch, beds and springs, wash stand, high chair, mirrors, living room suite chairs, straight and rockers; library table, desk and book case combine, books bed linen, quilts, rugs, garden tools, garden plow, garden hose, step ladder, double ladder, like new; oil drums, ice cream freezer, slaw cutter, home-made soap, stove wood, lots of tools of all kinds. Lots of dishes, some antique; pots and pans. Many other articles not mentioned. G. WILBUR NAYLOR Administrate of George C. Naylor TERMS OF PERSONAL PROPERTY - CASH. Not responsible for accidents Lunch Rights Reserved GUSS SHANK, Auctioneer ROBERT GRIMES, Clerk

Students Selected For Graduate Work

A meeting sponsored by the Woodrow Wilson National Fellowship Foundation was held at Saint Joseph College, Emmitsburg recently in Du Bois Hall, following a luncheon for the Faculty Committee on Graduate Study. Fifty-five students selected on the basis of their demonstrated ability as potential students for graduate work attended the meeting.

The Faculty Committee on Graduate Fellowships, chaired by Sister Rosemary, Dean of Studies, Ed.D., has considered it important to inaugurate a more intensive program of acquainting the student of superior ability and seriousness of purpose with the opportunities for graduate study. The Woodrow Wilson National Fellowship Foundation sponsored the meeting in conjunction with their fellowship aim; attracting qualified students to the specific and essential vocation of college teaching.

teacher to the assembled group of select students.

Dr. Witte introduced his presentation with the historical and philosophical resume of the heritage of intellectual excellence in Catholic education. "The challenge of the past as well as the challenge of the future urges the student of superior ability to fill the need for superior pedagogy, excellent command of subject matter, and avid curiosity," he said. The popular term "tidalwave of students" used to describe the phenomenal increase in college student population was discussed by Dr. Witte. The recognition by the public of the need for increasing physical facilities of colleges before 1956 will probably assure fulfillment of that need when the time arrives. "However," he asserted, "college teachers cannot be built as easily or as quickly as classrooms. The dedication, the background, the education, the scholarly habits, the experience must be sought, encouraged and enlisted now if we are to meet the tidalwave." The historical development, the growing movement, and then dedicated goal of the Woodrow Wilson Foundation, elucidated by Dr. Witte gave the students a deeper appreciation and understanding of their Fellowship program to teach.

In conclusion, Dr. Witte urged this group of students to meet the challenge of their heritage. "This heritage," he claimed, "is to fulfill the Divine command of

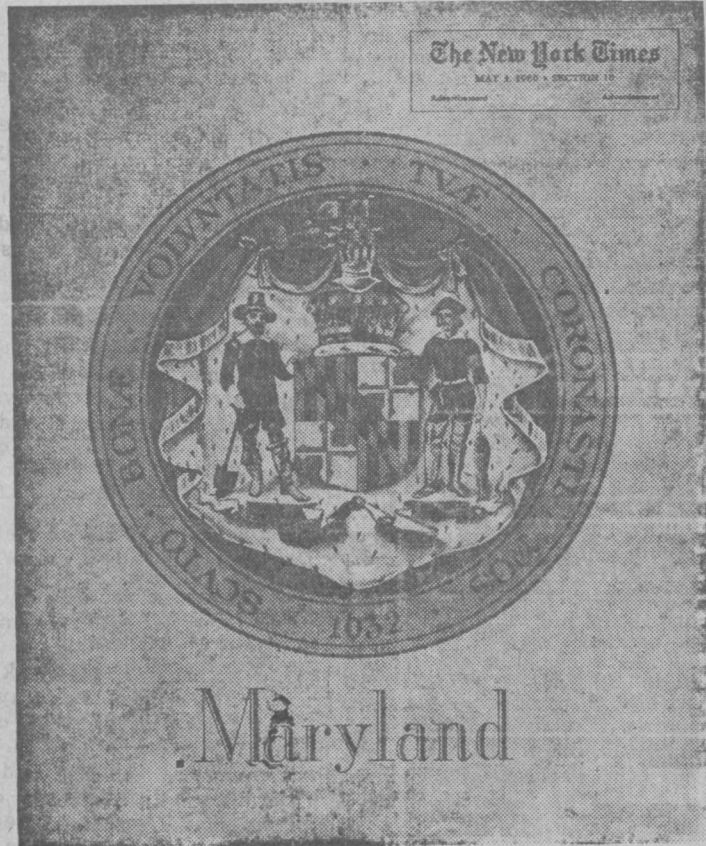
the use of the talents possessed, and to follow the model of intellectual excellence, Mary, the Seat of Wisdom. Learning is love; love of truth, love of neighbor, love of God."

Special Edition Dedicated To Maryland

The New York Times on Sunday, May 1 will include a special supplement on Maryland. This supplement will consist of 36 pages, 8 of which are in full color, and has been made possible through the cooperative efforts of Maryland's business firms and the Department of Economic Development.

Association of Commerce, the Maryland Port Authority, Dr. Milton Eisenhower, and Gerald W. Johnson. The supplement will also contain a message from Governor J. Millard Tawes and a lead article by George W. Hubley Jr., Director of the Department of Economic Development.

The Sunday edition of the New York Times has a circulation of



les about the economic and industrial possibilities, transportation, utilities, agriculture and minerals to be found in Maryland; and about Maryland's recreational and scenic attractions to tourists.

1,300,000. "Forty-one Maryland firms together with the Department of Economic Development have purchased advertising space in the supplement," according to Harry A. Boswell Jr., chairman of the Economic Development Commission.

FOR MOTHER'S DAY GIVE

SUNDAY, MAY 8 Whitman's CHOCOLATES



So Fine So Famous So Sure To Please Complete Line of MOTHER'S DAY CARDS

CROUSE'S OPEN SUNDAYS EMMITSBURG, MD.

PTA Achievement Night Draws Excellent Turnout

The Parent Teachers' Association of the Emmitsburg Public School held its regular meeting on April 27. This was the annual achievement night. Exhibits of pupils' work, done throughout the year, showed the progress made in the various classes. These displays were attractively arranged in the classrooms and cafeteria. The rooms were visited from 7:30 until 8:15 at which time an interesting program was presented by the elementary music classes, under the direction of Miss Ruth Stull. Grades 4 and 5 presented a skit "Sleeping Beauty", pantomiming in costume a record of the story. This was followed by a "Western Fantasy" of song and dance presented by all the other elementary grades, 1-6. The group, in keeping with the western theme, closed with the singing of "Home on the Range" in which the audience joined.

After the program the business meeting was held. The nominating committee presented the slate of officers for the next year, which were voted into office by the group.

The following officers will be installed at the May meeting: Harry Hahn, president; Norman Wiley, vice president; Mrs. John Chatlos, secretary; Mrs. Frank Webb, corresponding secretary; and Miss Lyla Jenkins, treasurer. The Teen-Age Safe Driving Road-e-o was announced to be held at the high school, Sunday, May 1 at 1:30 p. m. This is sponsored by the local Jaycees.

The attendance banner was won by Mrs. Guy Baker's room. After the business meeting, refreshments were served in the cafeteria. There was a record attendance and the quality of the exhibits was outstanding.

Pen-Mar League Schedule Released

The official schedule of the Pen-Mar Baseball League has been released as follows:

May 1, Blue Ridge at Emmitsburg, Fairfield at Taneytown; 8, Emmitsburg at Blue Ridge, Taneytown at Fairfield; 15, Fairfield at Emmitsburg, Blue Ridge at Taneytown; 22, Emmitsburg at Fairfield, Taneytown at Blue Ridge; 29, Fairfield at Emmitsburg, Blue Ridge at Taneytown; 30, Fairfield at Blue Ridge, Emmitsburg at Taneytown.

June 5, Blue Ridge at Emmitsburg, Fairfield at Taneytown; 12, Emmitsburg at Blue Ridge, Taneytown at Fairfield; 19, Fairfield at Emmitsburg, Blue Ridge at Taneytown; 26, Open date.

July 3, Emmitsburg at Taneytown, Fairfield at Blue Ridge; 4, Taneytown at Emmitsburg, Blue Ridge at Fairfield; 10, Blue Ridge at Emmitsburg, Fairfield at Taneytown; 17, Emmitsburg at Blue Ridge, Taneytown at Fairfield; 24, Fairfield at Emmitsburg, Blue Ridge at Taneytown; 31, Emmitsburg at Fairfield, Taneytown at Blue Ridge.

August 7, Blue Ridge at Fairfield, Taneytown at Emmitsburg; 14, Fairfield at Blue Ridge, Emmitsburg at Taneytown; 21, Emmitsburg at Fairfield, Taneytown at Blue Ridge Summit.

"The Maryland supplement is the third largest state section ever to appear in the New York Times, and will prove beneficial to the entire state in terms of general public relations," Mr. Boswell said. "It should also lead directly to the attraction of new industries to our state," he added. Governor J. Millard Tawes, after seeing an advance copy of the section said, "I am sure that Marylanders will feel pleased and proud of the fine tribute to our state in the New York Times. I feel sure too that the section will do a great deal to make our state better known to millions of Americans all over the country."

Elected Member John M. Fuss Jr., Emmitsburg, has been elected a member of the American Institute of Certified Public Accountants.

Mr. Fuss is with the Philadelphia office of Arthur Anderson and Co.

Property Sold

Charity E. Kaas has sold to Wilfred M. Watkins and wife a property with improvements consisting of about 45 acres along the west side of Motters Station road in the Emmitsburg District. Consideration was in the neighborhood of \$15,500.

ORDER NISI ON AUDIT Catharine Ahalt and Joanna Doggett and William E. Hauver, Jr. (Catharine Ahalt, Committee)

On Petition No. 18381 Equity in the Circuit Court for Frederick County, sitting in Equity March Term, 1960

In the matter of the Auditor's Report filed the 21st day of April, 1960.

ORDERED, that on the 14th day of May, 1960, the Court will proceed to act upon the Report of the Auditor, filed as aforesaid in the above cause, to finally ratify and confirm the same, unless cause to the contrary thereof be shown before said day; provided a copy of this order be published in some newspaper published in Frederick County, at least seven days prior to said day.

Dated this 21st day of April, 1960.

ELLIS C. WACHTER, Clerk of the Circuit Court for Frederick County.

C. CLIFTON VIRTIS, Solicitor

True Copy—Test: ELLIS C. WACHTER, Clerk 4/20/60

EXECUTOR'S NOTICE

This is to give notice that the subscriber has obtained from the Orphans' Court of Frederick County, in Maryland, letters Testamentary on the estate of

ELVIN ROBERT SCHILDT late of Frederick County, Maryland, Deceased. All persons having claims against the deceased are warned to exhibit the same, with the vouchers thereof, legally authenticated, to the subscriber, on or before the 25th day of October, 1960 next; they may otherwise by law be excluded from all benefit of said estate. Those indebted to the deceased are desired to make immediate payment.

Given under my hand this 13th day of April, 1960.

Maurice J. Albaugh, Executor True Copy—Test: THOMAS M. EICHELBERGER Register of Wills for Frederick County, Md. 4/15/60

EXECUTRIX'S NOTICE

This is to give notice that the subscriber has obtained from the Orphans' Court of Frederick County, in Maryland, letters Testamentary on the estate of

CHARLES U. FISHER late of Frederick County, Maryland, deceased. All persons having claims against the deceased are warned to exhibit the same, with the vouchers thereof, legally authenticated, to the subscriber, on or before the 25th day of October, 1960 next; they may otherwise by law be excluded from all benefit of said estate. Those indebted to the deceased are desired to make immediate payment.

Given under my hand this 18th day of April, 1960.

CLARA E. FISHER, Executrix True Copy—Test: THOMAS M. EICHELBERGER Register of Wills for Frederick County, Md. 4/22/60

ADMINISTRATOR'S NOTICE

This is to give notice that the subscriber has obtained from the Orphans' Court of Frederick County, in Maryland, letters of Administration on the estate of

ARCHIE L. PEARSON late of Frederick County, Maryland, Deceased. All persons having claims against the deceased are warned to exhibit the same, with the vouchers thereof, legally authenticated, to the subscriber, on or before the 26th day of October, 1960 next; they may otherwise by law be excluded from all benefit of said estate. Those indebted to the deceased are desired to make immediate payment.

Given under my hand this 20th day of April, 1960.

W. Jerome Offutt, Administrator W. Jerome Offutt, Attorney True Copy—Test: THOMAS M. EICHELBERGER Register of Wills for Frederick County, Md. 4/22/60

NOTICE

No loitering on Ball Field, Boy Scout Camp or any Public Grounds or Buildings. Anyone caught parking after dark on Ball Field or Boy Scout Grounds, or drinking after dark in the grandstand, will be arrested.

Any person or persons damaging the Ball Field or Boy Scout area or buildings will be arrested and fined.

CLARENCE G. FRAILEY, Burgess Emmitsburg, Maryland

National Baby Week May 1-7

DRESSES — CREEPERS — BLANKETS GOWNS — KIMONOS — TOWEL SETS PLASTIC PANTS — BOTTLE WARMERS Crib Sheets — Sweater Sets Nursery Lamps

Special: Baby Week Only PLAYTEX PARTY PANTS Regularly \$1.98—Only \$1.39

HOUCK'S Special Baby Week Drawing

Enter a Baby's name by sending the name and address on a Postcard to:

HOUCK'S STORE, EMMITSBURG, MD. PHONE HI 7-3811 EMMITSBURG, MD.

(Baby must be less than 3 years old)

NO PURCHASE NECESSARY

Drawing Saturday, May 7, 8:30 P. M.

Anniversary Celebration

FRIDAY, APRIL 29 to MAY 7

70 YEARS OF CONTINUOUS BUSINESS

30 YEARS ON THE SQUARE IN GETTYSBURG

Nothing Old-Fashioned Except The Old Gay Ninety Prices!

Don't Miss This Anniversary Celebration THIS IS A GRAND TIME TO BUY ALL THE NEEDED LUXURIES FOR YOUR HOME

30% On All Ladies Dresses And Suits. New Spring And Early Summer Styles.

SAVE ON Lingerie \* Luggage \* Work Clothes \* Infants Wear \* Sportswear \* Girl's Wear \* Boy's Wear \* Ladies Wear \* Men's Wear

30% Off On All Children's Dresses, Coats and Tops, Spring and Summer

COFFMAN-FISHER Lincoln Sq. Gettysburg, Pa. FINE DEPARTMENT STORES

NEW FOREST PARK

HANOVER, PA.

SATURDAY, APRIL 30

HANOVER SCHOOL DAY

FREE RIDES — PRIZES — SKATING

SUNDAY, MAY 1, Afternoon and Evening

Free Show By The Country Pals

—RIDE THE HOT RODS

—Hold Your Picnic Here. Phone ME 3-5286—

COMPLETE SELECTION OF . . .

VEGETABLE AND FLOWER PLANTS

LIME — FERTILIZERS — PEAT MOSS

BOX SEEDS

We Can Satisfy All Your Planting Needs At . . .

Gettysburg Hardware

BALTIMORE STREET — GETTYSBURG, PA.

Ancient Age



\$1.56 1/2 Pt. \$3.08 Pint \$4.85 4/5 Qt. \$6.00 Quart

IF YOU CAN FIND A BETTER BOURBON...BUY IT! Kentucky Straight Bourbon Whiskey • 6 Years Old • 86 Proof ©Ancient Age Distillers Company, Frankfort, Kentucky

READY FOR THE WEEKEND ORDER NOW

FREE DELIVERY

JUST DIAL

7 - 3271

A complete line of your favorite Beverage BEER - WINE - WHISKEY

Village Liquors

"Always in the Best of Spirits"

Ralph F. Ireland, Prop.

Phone 7-3271 Drive-In Service Emmitsburg, Md.