

Your Personal Health

Christmas Sealed Most of us have received our Christmas Seals in the last few days. As always, they're attract-

ive. We'll enjoy using them to seal our holiday greetings and decorate our packages. But, as we all know, their decorative value is the least of it.

The dollars we spend for Christmas Seals fight tuberculosis in many different ways. The money raised in each community is spent according to the need. In our town one of the important needs is for more aid for the recovering TB patient, to help him get back on his feet again and stay healthy. In your town the most pressing problem may

be to discover unknown active cases that are spreading infection. Each of the TB associations throughout the country attempts to spend Christmas Seal money on a balanced program of TB education, case finding, and rehabilitation suited to specific local problems. Of course, there never seems to be enough money to do everything that could and should be done.

There is one part of the TB control program in which we all share when we make our Christmas Seal contributions. That is medical research, the hope for future eradication of TB. Knowledge about TB gained from research has increased rapidly in recent years, but there are still large gaps to be filled. Two fundamental problems—the underlying cause of the virulence of the TB germs and the mechanism of human resistance to it—must be solved. The great dream is to find some reliable preventive that could be given to everyone of us. Until this dream comes true, the TB associations must continue to fight TB with the methods which have already made important gains. We all have a part in this fight when we contribute to our tuberculosis associations thru the Christmas Seal Sale.

cooperatives or "interested parties" which might wish to intervene.

"If this schedule is maintained and a Hearing Officer is available, we could possibly start hearings on the MCMP petition and proposal about mid-January," Mr. Sadler said.

"In the meantime, we at MCMP headquarters hear reports that some dairy farmers are confused as to just what a Federal Order can and cannot do and the part which farmer cooperatives play in the operation of the 68 Orders now in existence across the nation.

"We have prepared a pocket-sized folder, 'Federal Order Facts' which describes in simple language our proposal, including the suggested area and the part the MCMP will play when an Order becomes an accomplished fact." Anyone wishing a copy can write to the Maryland Cooperative Milk Producers, Inc. at 2210 North Charles Street, Baltimore 18 and one will be forwarded.

In announcing the latest development in the Federal Order petition, the MCMP also made public milk prices per hundred-weight paid its members for October milk. These were, \$5.02 for Quota milk (98 per cent of base) or a 25 cent increase over Sept.; \$3.01 for Over-Quota, an advance of six cents. Non-Quota milk brought \$4.72 or 27 cents more than in September. Both of these months have shown sharp improvement over preceding months.

"Several factors have played a part in the improvement of milk prices, even though the continuing flow of non-member milk for bottled use at a price lower than our Class I holds us down and cuts income to all dairy farmers," commented President Edgar G. Emrich.

"Production is down somewhat and the full effects of the school milk sales, which the Cooperative was largely able to confine to its buyers, has entered into the picture. The big factors, in addition to decreased production, have been increased Class I sales to regular and 'spot' buyers, an increase in prices for milk used in armed forces contracts, a higher price for manufactured milk and the ability of the MCMP to

move quickly to points where it was needed most and where it brought the best price.

"Under the present terms of sale, which include a discount for regular buyers, these 'spot' buyers pay more than the regular customers, as they should. They know, however, that the farmers' Cooperative is carrying the necessary milk reserve (in order to maintain milk for any emergency in the Baltimore metropolitan area) and that their own needs will be met."

Peace would automatically descend upon the earth if every individual and every nation would stop trying to secure unearned advantages.

The super-drug will be the drug to end the necessity for all other drugs.

There are workers in the world whose chief occupation is to appear busy.

BANK NOTES by Malcolm

Did you know...

IN 1900, PERSONAL SAVINGS IN THE U.S. TOTALLED ONLY \$5 BILLION. TODAY, THEY EXCEED \$270 BILLION—AN INCREASE OF 54 TIMES IN 58 YEARS.



A NEW YORK BANK NOT ONLY MAKES ITS LOBBY AVAILABLE FOR VOTERS BUT SERVES REFRESHMENTS TOO.



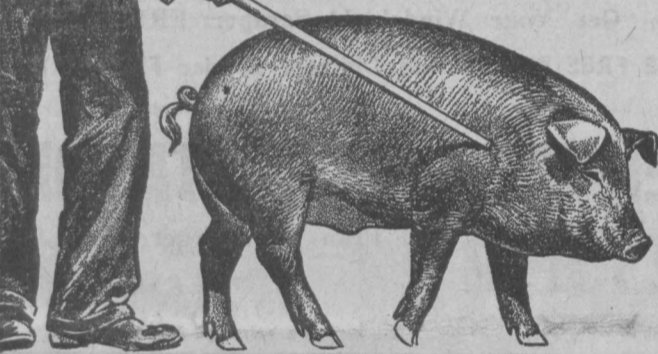
Government Acts On Milk Producers Marketing Order

Acting quickly on the petition and proposal for a Federal Milk Marketing Order for the Baltimore milkshed filed by the Maryland Cooperative Milk Producers, Inc., the Department of Agriculture on November 10 mailed out invitations for other interested persons to submit proposals which they feel should be considered.

The MCMP forwarded its proposal to Washington on Oct. 14. In the letter, W. G. Sullivan, Chief of the Market Orders Branch, set December 5 as the time limit for filing any new proposals.

Commenting on the Department's action, W. P. Sadler, MCMP Manager, said that the December 5 date will provide ample time for such actions by dairies, other

Crowd on the pounds —fast and at low cost



...with HOG CHOW and grain

Thousands of Purina Program hog feeders report hogs ready for market when only 5-5½ months old. When shoats weigh 100-125 lbs., they are fed Hog Chow and grain to market weight. And it takes only 5 bu. of corn and 45 lbs. of Hog Chow to put on 100 lbs. of gain! SAVE YOUR GRAIN, get more for it by walking grain to market as pork. Lots of your neighbors feed Hog Chow. We invite you to ask them what they think of Hog Chow results.

COME SEE US. Let us tell you more about Purina's proved plan for feeding hogs. Make it soon!

ZURGABLE BROTHERS

FARM SUPPLIES

Phone HI. 7-5051

Emmitsburg, Md.

Autumn in Manhattan

Advertisement for a tour of Manhattan. Text: 'Fall is a wonderful season and is at its brilliant best in that wonderful town, New York.' Includes illustrations of the Empire State Building and Central Park.

Advertisement for Norelco Speedshaver. Text: 'DIFFERENT? YES! Rotary Blades make all the difference! New Norelco Speedshaver. Now The Largest-Selling Electric Shaver In The World.' Lists features like self-sharpening blades and high-speed motor.

Advertisement for 'Various Ways to SHAVE'. Shows four methods: 'The Yogi Method', 'The Religious Technique', 'The Stage Technique', and 'The Logical Way'. Text: 'The most efficient electric shaver has the rotary blade—that whips off your beard speedily and quietly. It leaves your face baby-smooth and free from any burn or scrape. The Norelco speed-shaver is really a logical answer to the shaving routine.'

Advertisement for 'ATTENTION! Members of the Gettysburg Moose'. Text: 'FREE-PRIZE GAME EVERY FRIDAY NIGHT—Free Prizes Awarded—Come in and Win!—Dancing This Saturday Night—HARRY MARSH ORCHESTRA Floor Show Ernest Hall Agency—Talent From Washington and Baltimore'

Advertisement for 'Happy Cooking Metered Gas Service'. Text: 'THE GREATEST FUEL ON EARTH. Happy Cooking Metered Gas Service is fully automatic. No need to order gas. Your supply is checked and replenished regularly. MATTHEWS GAS CO. Emmitsburg, Md.'

Advertisement for 'SEE THE '59 FORDS NOW ON DISPLAY'. Text: 'ALSO A-1 USED CARS & TRUCKS. 1956 Ford Tudor Hardtop, V-8, Formomatic, R&H, P.S. 1954 Ford Tudor; Heater. 1953 Chevrolet Tudor, R&H. 1953 (2) Plymouth Fords; O.D.; R&H. 1951 Ford Tudor V-8, R&H. 1950 Ford V-8 Fordor; R&H. 1950 Willys Station Wagon. 1949 Pontiac Sedanette, R&H; clean. 1952 Dodge ½-Ton Pickup, R&H. SPERRY'S GARAGE Phone HI. 7-5131 Emmitsburg, Md.'

Large advertisement for Ford cars. Text: 'Four big reasons why FORD IS OUTSELLING ALL OTHER '59 CARS'. The world's best-selling car is the car with Thunderbird elegance. In the greatest styling decision of the year, the American public has already shown a clear preference for the new Fords. Ford sales are way ahead of all competition. Why? One reason is the classic simplicity of their Thunderbird-inspired design—clean, crisp lines that are pure automobile! And Fords are built for people—to sit in, to drive, to ride in—with comfort. The car in hottest demand across the land has greater roominess and comfort. Thousands of customers have bought the new Ford over all competition for another compelling reason—it's a true six-passenger car. (The only four-passenger car we recommend is the Thunderbird!) All six Ford passengers get plenty of every kind of room—from leg and head to elbow and hip. Rear seat passengers don't feel like they're riding with their feet in a bucket! The No. 1 car in sales saves money on gas, on oil, on maintenance bills. A new Ford will save you up to 5¢ a gallon on gas. That's because both standard engines—Six or Thunderbird V-8—thrive on regular gas. And Ford saves on oil, too, with a Full-Flow Oil Filter as standard equipment. Drive 4000 miles between oil changes! And you can forget about waxing your car. Ford's Diamond Lustre Finish stays gleaming bright without waxing—ever! The most popular American car is priced as much as \$102.75 lower. Ford costs you less right down the line than the competition. Compare price tags and you'll see that the manufacturer's suggested retail price of a Ford, equipped with radio, heater and automatic transmission, is as much as \$102.75 less than the major competition! And on an air-conditioned car, you can save up to \$219.85. So compare and save on a 1959 Ford!

Advertisement for 'SPERRY'S GARAGE'. Text: 'South Seton Ave. Emmitsburg, Md. Phone HI. 7-5131'

Emmitsburg Chronicle

EMMITSBURG, FREDERICK COUNTY, MARYLAND

Published weekly on Friday by the CHRONICLE PRESS INCORPORATED, South Seton Avenue, Emmitsburg, Maryland, Telephone Hillcrest 7-5511.

CHARLES ARTHUR ELDER, Editor-Publisher

All Communications and Checks Intended for This Paper Should Be Addressed and Made Payable to the CHRONICLE PRESS INCORPORATED, Emmitsburg, Md.

Copy for Advertisements Must Be Received in This Office Not Later Than Wednesday Evening to Insure Publication in the Current Week's Edition. Advertising Rates Furnished Upon Request. Subscription Rate, \$3.00 Per Year in Advance.

Entered as Second Class Matter at the Postoffice at Emmitsburg, Maryland, under the Congressional Act of March 3, 1879.



Member of Maryland Press Association, Inc., and Pennsylvania Newspaper Publishers Assn

Beavers Get New Lease On Life

There's a fashionable trend toward striped, sheared beaver this year and, would you believe it, those eager beavers down Beaver Valley way are actually rejoicing.

Imagine a bunch of luxury-fur animals like this celebrating when American business is predicting that several thousand beaver-type coats, jackets and capes will be purchased for and by the femme fatale during the coming year. They must have an inside tip.

They have, and the information is true. Human ingenuity has now arrived at a point where beaver and practically all the other costly furs can now be copied by man — and made softer and better-wearing than the real McCoy. Particularly significant in this field of development is Dynel, the "gas, air and salt water" acrylic fiber made by Union Carbide. Used either by itself or blended with Orlon, it is transformed by a number of the nation's leading textile mills into luxurious deep-pile fur-like fabrics that require experts to tell they didn't come from Beaver Valley, the mink ranch of Seal Island. And the resultant coats have such unusual features as warmth and bulk without weight, and stubborn resistance to even the most miserable winter days.

Yes, and these man-made beavers and other fur-like fabrics are economy-minded too. You've no doubt guessed by now that the coat pictured here is a creation of Dynel and Orlon with three-dimensional "Beavalite" striping, but it's a good bet that you wouldn't expect it to sell for around \$100, one-fifth the cost of its cousin from the Valley.

Just to complete the picture, here are some man-made names that go with this year's crop of man-made furs: Chinella, Pola Bear, Racuna, Mutation, Rah-oon, Normink, Pandora, Mynx, Wink and Beavalon. Take your pick. It's estimated that a million of 'em will be sold this year.



BABSON

Writes . . .

BY ROGER W. BABSON

Babson Discusses Aluminum

En route home from Cape Town, Nov. 20—I have written a column on gold and another on copper; but another industry which may become very important is the aluminum industry.

How Aluminum Is Made

This metal is obtained from a clay known as bauxite; but it is of no use unless a large quantity of cheap electric power is nearby. This combination requires vast capital investments. Only electricity will separate the metal from the clay at a satisfactory cost. Several countries have bauxite, but not the cheap power.

In Northwest Africa this combination has been found near the seacoast, which is also an advantage. Such an electric power plant is now being built. With cheap African labor at \$29 per month, this should enable the Aluminum Company of America to produce and transport in its own steamers the cheapest aluminum in the world. I am now recommending no stocks in this market; but if a reader wants an aluminum stock as an investment — not for speculation—I believe he would do better to buy Alcoa than the stock of any competitor.

What About Gravity?

As most readers know, I am much interested in discovering a partial insulator of gravity. Such a discovery would not only be a great blessing to everyone in time of peace, but the nation which first makes this discovery should be the winner of World War III if it ever comes. Such a discovery would enable missiles to easily break the "gravity barrier" and go to the moon. Furthermore, it would revolutionize all airplane travel, increasing both safety and speed.

Investors are apt to forget that there are two sides to the gravity picture. Although all nations should seek vigorously for a partial insulator of gravity, they should also demand greater use of lighter materials such as aluminum, magnesium, and plastics. The ship which I am now on has such a large amount of magnesium that the captain is complaining because it gives bulk, but has no weight

for ballast. In fact, my studies of gravity convince me that aluminum, magnesium, and plastics will play an important part in industry and should be watched by every investor.

Alloys For Strength

Aluminum is very much lighter than steel, but it will dent more easily. This fact is slowing the building of trains and automobiles with aluminum. Great searches are going on in laboratories to find an alloy which will combine "no weight" with great strength. All who are interested in controlling gravity should watch the metallurgists who are seeking these new alloys. A complete revolution may soon take place along these lines, including the making of all metals in every color.

In Africa investors are going very slowly in building steel plants. Africa now has only three such plants, although the continent has rich iron ore. They believe that plastics will largely take the place of steel in most building developments. Although I have felt that the "steels" are fundamental investments, and that Carnegie, Morgan, and Frick showed great foresight in forming the United States Steel Corporation, I now wonder if it ever would have been formed if plastics had been developed first.

Plastic Possibilities

With the use of chrome, steel can be made so it will not rust. This is the so-called "stainless steel." But plastics will not rust or tarnish; they are very easy to work or mold. We are still in a great Chemical Age — and plastics are just beginning to be used. My belief is

that plastics will largely replace steel, lead, zinc, and other metals,—but not copper. I continue to be bullish on copper.

If we enter an atomic age when uranium or hydrogen from ordinary sea water is used to manufacture cheap electricity, all distribution systems will have to be doubled, including the wiring of your house and office. Only investors in undeveloped continents like Africa, who are not loaded up with big, depreciating, obsolete plants such as we have in the U. S., are free to create truly modern plants. With copper, uranium, water power, coal, and the elements which make plastics at her door, Africa will create a great chemical industry which will astonish every reader of this column.

It'll pay you to remember that the cost of experience has gone up like everything else.

An executive is a businessman who has to work hard to find work for the staff to do.

**Septic Tanks
Cleaned
M. ALLEN
WASTLER
Littlestown, Pa.
Phone 247-W**

DEER HUNTERS

SEASON OPENS DECEMBER 1

Large Selection of
**WOOL HUNTING COATS and PANTS
AMMUNITION**

GETTYSBURG HARDWARE

Baltimore Street Gettysburg, Pa.



The kitchen can be the gayest room in the house by merely adding a few touches. Paint the walls one color and the ceiling a deeper matching tone or even a different color. If there's space, cover one of the walls with a peg board fitted with hooks and clips that hold pots and pans as well as shelves for small items. Paint an old ladder the color of the walls and use it as a display rack for interesting dish towels. Clear glass candy and chemical jars can hold staples. A quick once over with a sponge dipped in a Spic and Span solution keeps walls and shelves sparkling clean. Best of all, this solution does not need rinsing.

While the finished floor may be the last thing a builder puts in a house, it's the first thing to consider in decorating. In selecting a floor covering, remember you'll probably live with it a long time so look for one with a smooth, durable surface that wears well and is easy to keep clean. There's an impressive array of colors and designs in linoleum, vinyl and rubber tile and other washable hard-surface floorings which are a breeze to keep "Spic and Span" clean. Since rooms in today's smaller houses have split personalities—a TV room may also double as a guest room or study—it's wise to select flooring that will take a lot of punishment and always look fresh for company. Choose the floor covering that is just what you need and want.

Go to the rescue of an old linoleum floor and paint one section at a time with good deck enamel. While it is still wet, spatter it with a contrasting color and let the colors flow together for a marbled effect. After it is thoroughly dry, apply a coat of varnish, then wax. Upkeep is easy with the special no-rinse cleaner for all hard-surface floorings and painted surfaces. A quick wipe with a mop dipped in the no-rinse cleaner solution is all that's required.

Grinding & Mixing Of Your Grains

SOUTHERN STATES SUPPLEMENTS

TOP QUALITY FEEDS
For
POULTRY
HOGS
CATTLE

Multiplied Profits
"In Your Pocket"



EMMITSBURG
FEED & FARM
SUPPLY
Phone HI. 7-3612
EMMITSBURG, MD.

**Colorful?
you bet**

JERH
Decorators
Paints

odorless - ALKO
FLAT ENAMEL
WHITE BASE

INTERIOR
EXTERIOR

Decorators

324 COLORS TO CHOOSE FROM IN
EVERY KIND OF PAINT FOR EVERY PURPOSE INSIDE OR OUTSIDE

CLOYD W. SEISS
LUMBER YARD
PHONE 7-4711 DEPAUL ST, EMMITSBURG

DOG ODDITIES

By Harry Miller, Director, GAINES DOG RESEARCH CENTER

THE PULI MADE ITS FIRST APPEARANCE 1100 YEARS AGO WHEN ASIATIC WARRIORS INVADED CENTRAL EASTERN EUROPE



A DOG CAN HEAR A SOUND AT 80 FT. THAT CAN'T BE HEARD BY A MAN AT 20 FT.

ONE OF THE 2 FOUNDERS OF THE ENCYCLOPEDIA BRITANNICA (1768) WAS ANDREW BELL, AN ENGRAVER OF DOG COLLARS



The Great Chicago Fire of 1871—the Hartford paid thousands of claims promptly and fully

Service is a tradition in our business

When losses occur, what policyholders want most is a prompt claim settlement. That's the cornerstone of our agency's operation.

We provide dependable protection — backed by organizations like the Hartford Fire Insurance Company—for your home . . . family . . . car . . . business. Call us.

J. WARD KERRIGAN

Emmitsburg Insurance Agency
100 East Main Street
EMMITSBURG, MD.

Phone HI. 7-3161

Representing the
Hartford Fire
Insurance Company

A BIG CHECK FOR YOU...



What a joy it is to receive a bountiful check just in time for your Christmas gifting . . . a check big enough to insure the "best Christmas ever" for all of your loved ones with NO "hangover" of Christmas bills for you! You can get on the receiving end of just such a check for Christmas 1959, by joining our Christmas Club Now. Just a little money stashed away each week adds up to lots of Christmas joy for everybody . . . including YOU!

If you have the will we have the way to make next year's Christmas shopping financially painless. Come in and get the facts!

The Farmers State Bank

EMMITSBURG MARYLAND
MEMBER OF THE FEDERAL DEPOSIT INSURANCE CORPORATION
2 1/2 % Interest on Savings Accounts



WINES & LIQUORS

COLD BEER - PARTY SNACKS

"ADD GALLO TO YOUR HOLIDAY MENU"

Gallo Wines Now In All Flavors And All Sizes

If You Prefer Rum, We Have Many Brands and Flavors To Choose From

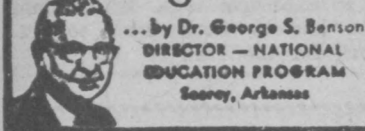
Place Your Order Now

ROGER Liquor Store

Emmitsburg, Md.
Free Delivery Service
Phone Hillcrest 7-5151



Looking Ahead



The Communist Advance

One of the four greatest dangers to the life and liberty of every American citizen, in the opinion of Senator John L. McClellan, is the continuing advance of world Communism and the failure of the United States government to adequately deal with this monstrous force. Senator McClellan is one of the hardest working men in Congress and one of the most respected, in and out of Congress. He frankly says that both the Truman and the Eisenhower foreign policies have

failed to cope with the constantly growing Communist menace.

Senator McClellan says that if present trends in our nation continue — together with the apathy of our citizenry—America will go down the road to terrible tragedy. "The facts show," he says, "that Communism is winning the battle for the world." How many American citizens—how many readers of this column—realize that this is true, that the world is being gobbled up by a frightful fraternity of brutality which denies God and uses mass murder and human slavery to strengthen its dictatorship?

Full Picture Needed

The facts are all about us. Some of us have been focusing attention on them for years. Piecemeal they appear in the newspapers, on radio and TV.

Seldom do we see them collected into a full picture of what's happening in the world. Shortly after Senator McClellan spoke out in warning to the American people, the United States News & World Report published an article entitled "Today's War—How the Reds are Operating in 72 Countries." The first paragraph says: "Today's war, as the Communists wage it, still is World War III. Communist style. And, in much of the world, the Communist forces are out ahead, making progress winning battles."

Yet our foreign policy for the 13 years since the end of World War II has been spoken out of both sides of the mouth, has been working both sides of the street. Our governmental leaders have been wining and dining and toasting with Stalin and Khrushchev, constantly

seeking truces, cease-fires, "understandings," and agreements with them, while telling the American people the Reds are international crooks bent on our destruction and that \$40 billion a year in tax money is needed to arm against them. Reds Making Progress

The U. S. News & World Report article reports briefly on Communist activities in each of the 72 countries—how they are gaining outright political power, controlling labor unions, infiltrating schools and colleges and particularly the thought-shaping agencies such as newspapers, radio, television. In America, their cunning and effective propaganda apparatus has been concentrating in recent days on trying again to undermine Nationalist China and persuade the American people we should not concern ourselves with helping hold Que-

moy and Matsu. The magazine article reports: "EUROPE: Communists are waging war on the U. S., in Western Europe, by every means short of shooting. On Moscow's orders, local Reds are moving swiftly into ready-made crises, encouraging Algerian terrorists in France, unemployed workers in Italy, fishermen in Iceland, disgruntled minorities everywhere. Reds are strong in labor movements in many countries, and are strong in politics too.

Winning Battles
"SOUTH ASIA: Soviet Reds and Chinese Reds are fighting hard together for South Asia, using all means, including guerrilla wars in jungles. Local Communist parties control a major state in India, are powerful supporters of Indonesia's government. Soviet agents woo Afghanistan with loans and aid; Chinese Reds help local Communists to infiltrate Thailand, Burma, Laos, and Cambodia. Everywhere, Reds encourage 'hate the U. S.' campaigns."

The article goes on to show the advances made by the Reds in Africa, Latin America, the Far East and the Middle East. When you have run down the list of these 72 countries and absorbed the shocking facts of Communist advances everywhere, you can understand Senator McClellan's grave concern for the survival of our nation. What can a citizen do? We can urge upon our representatives in government from the president down, the outlawing of Communists in our country, the recall of our recognition of Communist Russia, the gearing of our government to a state of war, and the establishment of a foreign policy founded upon morality and activated with the same moral courage that brought our great nation into being.

SPORTS AFIELD

By Ted Kesting

Salt water may not be the best thing in the world for boats, but, more often than not, its bad effects are exaggerated. Actually the list of salt-water troublemakers is a short one which includes marine borers, barnacles, corrosion and electrolysis, states Willard Crandall, Boating Editor of Sports Afield Magazine.

New products combined with tried-and-true know-how have lessened the hazards of salt-water boating. Perhaps the greatest single deterrent is the modern boat trailer which permits an owner to keep his boat in "dry dock" yet have it launched and ready to go on a few minutes notice. In this way he is able to keep both the top and bottom sides washed down with fresh water.

Boats kept in the water for any length of time, whether they are built of plastic, metal or

wood, must have antifouling bottom paint. While borers will do little damage to plastic or metal, many other salt-water growths will accumulate to hamper good performance if such paint is not applied. The rule is: Any boat left in salt water must be periodically removed, its bottom scraped and new paint applied. Antifouling bottom paints work by dissolving poison into the water. Sooner or later all the poison is dissolved. This is the reason the paints have such a limited life.

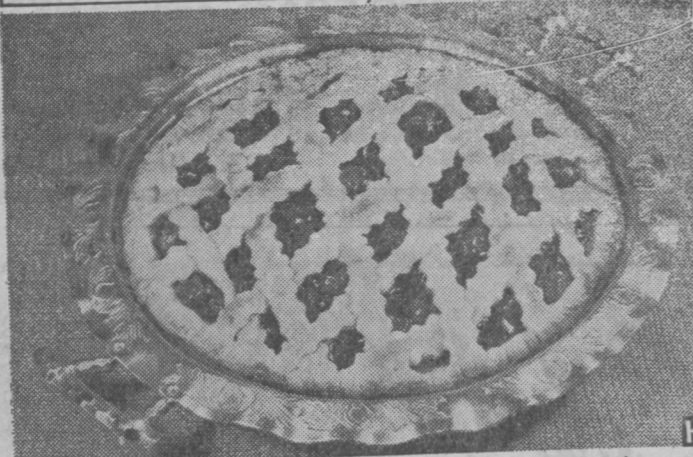
Metal fittings and hardware that are never submerged but subjected to salt spray should be of the best quality stainless steel, bronze, chrome over bronze, monel, or nickel or aluminum alloys. Fiber glass is also being used now.

Underwater, bronze or brass with steel, iron or aluminum are the major combination which sets up electrolysis, the latter metals taking the damage. Such incompatible metals should never be used in combination.

The adjective has made life lucky for advertising experts and radio commentators.

Lard Wins Cherry Pie Honors

By MARTHA LOGAN



Aspiring champion pie bakers, and all with an eye to improving their baking methods, will be interested to know that two of last year's four regional winners chose Silverleaf Brand Pure Lard as their shortening. The Dixie Belle, Sandra Bedwell of Kentucky, and the Yankee Lass, Susan Harris of Indiana, both won their regional titles using this fine lard. They found that it gave their pastry the extra flavor and flakiness necessary for winning results.

Here is a recipe for a Pastry Mix that enables you to make pastry for several pies ahead of time.

PASTRY MIX

Yield: About 9 cups
1 pound (2 cups) lard
Sift flour with salt. Cut in lard, using a pastry blender, fork, two knives, or the finger tips until the mixture is the consistency of coarse corn meal. Store in a covered container in the refrigerator. Use for pie crusts or turnovers.

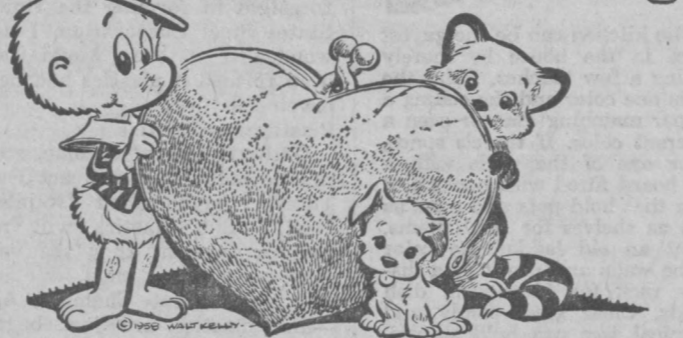
HOW TO USE THE MIX

For one 9 inch pie crust and lattice top crust use 2 1/2 cups pastry mix and 3 to 4 tablespoons water. Sprinkle cold water a little at a time over different parts of the pastry mix. Use as little water as possible, just enough to moisten dough. Press together lightly with a fork. Place dough on waxed paper. Knead 3 times. Pull paper up around dough and press gently with the paper to form a ball. Let stand at room temperature for 15 to 20 minutes.

LATTICE TOP CHERRY PIE

2 cans (1 pound each) pitted pie cherries
1 1/2 cups sugar
1/2 cup flour
1/4 teaspoon salt
Few drops red food coloring
3 tablespoons butter or margarine
Bread cherries well. Combine sugar, flour and salt. Mix with cherries. Add food coloring. Divide dough in half. Roll out one half to fit into pan, for lower crust. Reserve other half for lattice crust. Add cherry filling. Dot with butter. To make lattice roll out other half of dough. Cut it into strips 1/4 inch wide. Lay pastry strips about 1 inch apart over the filling. Lay a similar number of strips diagonally across these. Weave strips in and out over each other, starting in center and working out to edge. Cut strips even with edge of pie pan. Fold lower crust over these ends. Press together lightly and flute edge to form standing ripple. Bake in a hot oven (425°F.) about 45 minutes or until juice bubbles up and crust is well browned. Cool on a cake rack.

Thoughts for Thanks and Giving



Open your purse—help stricken children.
Give generously to the

THANKSGIVING MARCH FOR MUSCULAR DYSTROPHY
November, 1958

Muscular Dystrophy Ass'ns of America, Inc.

Wonderful World by WALDMAN



In 1689, Charles XI of Sweden in need of muskets for his army, founded a royal gun factory at Husqvarna with fifty workmen. Today, Husqvarna has grown into a major manufacturing enterprise boasting a payroll of over 6,000 and an annual business of \$36 million.



Husqvarna workmen are so proud of their labors that all Viking sewing machines are guaranteed until 2000 A.D. and motorcycles and motorbikes are test-driven the length of Sweden to insure their sturdiness.



During World War II, a Husqvarna rifle, thirty years old, was buried from Nazi soldiers on the island of Crete. When dug up four years later, it was found in perfect condition.

The War On Back-Alley Litter



There's a new look in the friendly town of Hopkinsville, Ky. When they show you around, townspeople now pause and stand a little taller, as they proudly point out the alleyways. They're neat and clean as a whistle.

Hopkinsville recently faced the same problem that plagued many another community: trash-littered alleys, besides being eyesores, were a constant fire and health hazard.

It licked the problem with the teamwork of old-fashioned civic determination and modern engineering.

The Jaycees told merchants and local officials of the amazing change they had seen when a new, automatic trash-disposal method was tried in Clearwater, Fla., Grand Rapids, Mich., and many other communities.

After much study, the city purchased a Leach "Packmaster"—a trim, enclosed refuse collection unit that mechanically picks up and compacts the contents—barrels, boxes and all—of rat-proof, fireproof Leach enclosed containers. (See picture —>

container being emptied automatically into Packmaster).

Merchants replaced their unsightly trash barrels with the new containers. The collection crew now does a neater, faster job, helping local tax dollars stretch farther. And a perennial occupational hazard—back-alley odor—is a thing of the past.

The full story of the Hopkinsville plan is available from the Elgin Corporation, 222 W. Adams St., Chicago 6, Ill.



for the
**Perfect
Wedding.**

your invitations and
announcements must
be flawlessly
correct!



Let us show you the
"Flower Wedding Line ..."
created by *Regency!*

NATURALLY, they're important to you! That's why we want you to see these invitations for yourself. And please don't let that costly look mislead you... the magic is in the making of these invitations! Feel that fine, sharp raised lettering. It's done by a very special process! Feel the creamy quality of the papers! Check the perfect form of these invitations with people who really know! Come in! We will be happy to show you the "Flower Wedding Line."

We have
matching enclosure cards,
response cards, and
informals!

Select from 45 distinctive papers
and 17 styles of lettering.

CHRONICLE PRESS

Phone HI. 7-5511

Emmitsburg, Md.

PLEASE CARE!

\$1 sends 22 lbs. of food
to hungry families abroad

Every night thousands of families in Europe, the Middle East, Latin America and Southeast Asia go to bed hungry. Children in Latin America go to school with only a cup of black coffee in their tummies; orphans in Korea have only watered down soup to eat all day; the aged and sick in Italy have but a crust of bread to keep them alive. CARE will send 3,000,000 packages containing 22 lbs. of U. S. government surplus food to these hungry people this winter with your help. \$1.00 pays for paying, shipping and distribution of one of these packages and your name and address goes on each package. YOU can be a person-to-person friend to hungry families overseas.

JOIN THE CARE FOOD CRUSADE

CARE
BALTIMORE 15, MD.

Enclosed find \$_____. Please send _____ Food Crusade packages for me.

Name _____

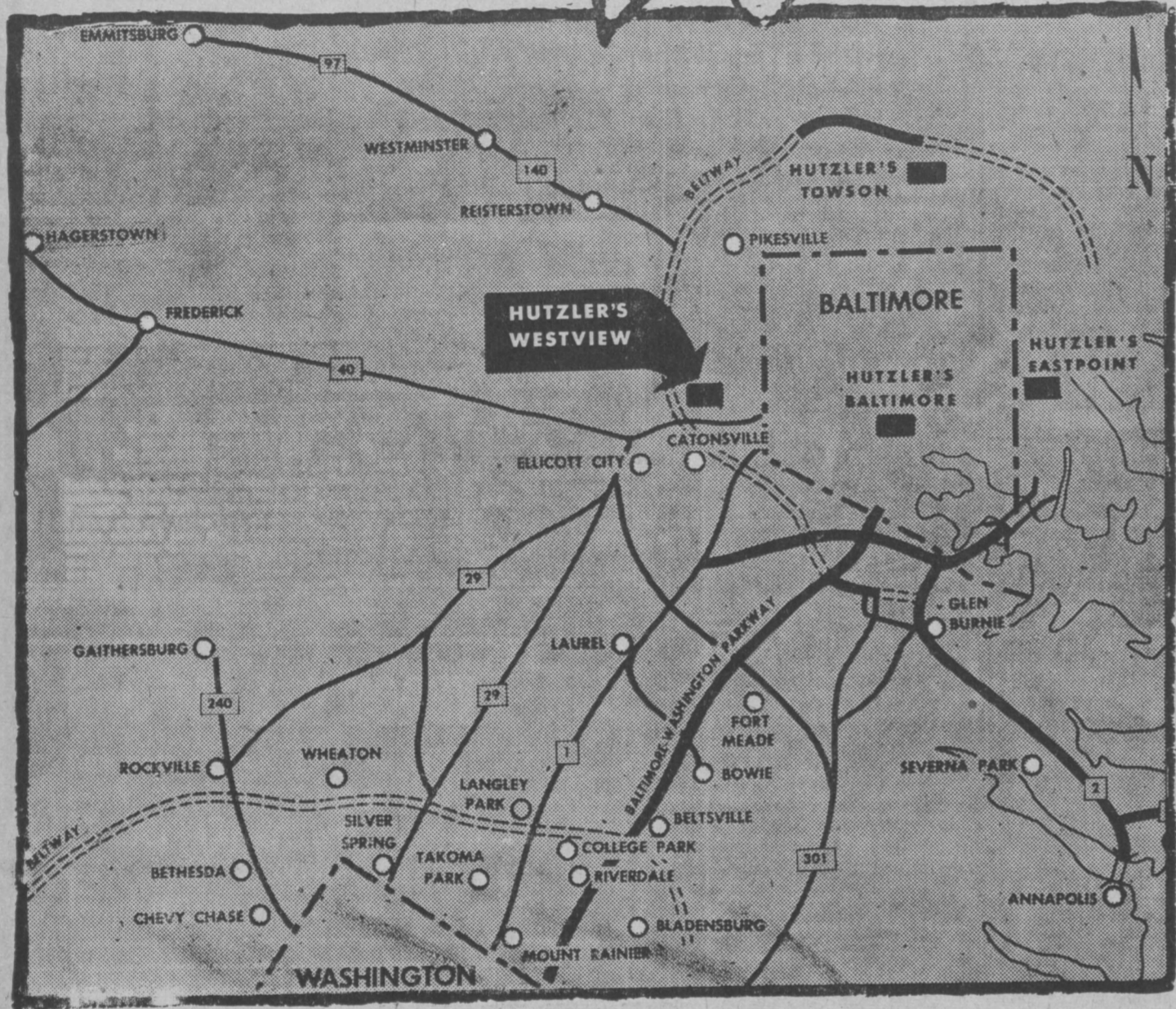
Address _____

HUTZLER'S



Westview

IS THE GIFT STORE FOR YOU



if you live in
west or northwest Baltimore
or Baltimore County;
Anne Arundel, Carroll, Howard,
Montgomery or Prince Georges County
or Western Maryland

JUST MINUTES FROM YOUR DOOR
Baltimore National Pike (Route 40) at Ingleside Ave.

BIG, BEAUTIFUL, GLAMOROUS . . . full of exciting Christmas stocks for family and home

ACRES OF FREE PARKING . . . to make your Christmas shopping easy

"MARYLAND GARDENS" . . . a delightful restaurant serving food in true Maryland tradition

you're invited to
**APPLY FOR A
HUTZLER
CHARGE ACCOUNT**

HUTZLER BROTHERS CO., Baltimore 1, Md.
This is my application for a Hutzler Account: Regular (30-day)..... Budget.....

MR.	Employed by
MRS.	Business Address
MISS (print your full name)	Charge Accounts with
Home Address	Personal Reference
Signature of Applicant	Address

STORE HOURS AT HUTZLER'S WESTVIEW

Monday, Tuesday, Thursday, Friday 10 to 9.30, other days 10 to 5.30
Beginning December 1, also open Wednesday nights for Christmas shopping