





**GIVE**  
By Mary Jane Barthlow  
Just give a pint of blood  
To help a soldier boy  
It won't hurt a bit  
It will give you joy  
Just think it might be helping  
your own son  
So just give a pint of blood, give one.  
Just think how it would be  
If you were fighting too  
Way over there in Korea  
Where nobody's free  
Just go and give  
So a soldier boy can live.  
Just think a boy could be dying  
Over there in the mud  
Just because you didn't give  
A pint of your blood  
So go and give, no matter  
where  
It will help a soldier over there.

Many people are very inconsistent in many things, but stand loyally by their prejudices.

A good wife laughs at hubby's jokes—not because they are clever—but because she is.

Alcohol is just as bad for the arteries of traffic as it is for the arteries of the drinker.

The three influences that will preserve our freedom are prayer, common decency of man and plenty of ammunition.

**LITTLE THINGS about the Stars**  
TELEVISION • RADIO • HOLLYWOOD

By GEORGE LILLEY  
**HOLLYWOOD**—Right on schedule, "Our Miss Brooks," the Eve Arden show, has turned out in its first season on television to be the pleasant success almost everyone guessed it would be. Miss Arden's is an unusual case where a good Hollywood performer has gained overwhelmingly revitalized status by way of video (Friday nights, CBS-TV). As the bright, human, young schoolteacher, "Connie Brooks" has problems, that are the type all listeners, as well as schoolteachers, understand—a fearsome boss in principal "Osgood Conklin," played by Gale Gordon, and romantic interest in fellow teacher "Mr. Boynton,"



"Osgood" "Connie" "Mr. Boynton"  
...problems viewers understand

among them. Her characterization has come to be one of the most viewable—and is probably destined to be one of the most enduring—on the air.  
Eve Arden, born Eunice Quendon, graduated from high school in Mill Valley, Calif., got a job in a city department store, spent her salary studying dramatics, and hasn't been out of show business since. Like schoolteachers do for a vacation, this month she'll go to Europe with hubby Brooks West. They have just adopted another child, four-month-old Duncan Paris West—companion for adopted daughters Liza, 8, and Connie, 5.

**HOPE FOR DAYTIME HOUSEWIVES**  
"The Bob Hope Daytime Show"—Hope for the housewives—is an outstanding example of radio's strengthening itself by scheduling top-flight night entertainers on the daytime channels. The Hope program, a compilation of stunts, chatter, interviews and gorgeous Lady Editors (among the editors: Jane Russell, Marilyn Maxwell,



...the shoes had holes  
Linda Darnell and Anne Baxter, has been going strong mornings on NBC since November and will run through the summer.  
Little Things about Leslie Townes Hope, 49, Cleveland-reared, Eltham, England, born; Fifth of a stonemason's seven sons (no girls). Started as a dancer, switched to stage in a break-in act in Newcastle, Ind. Soon after was \$4,000 in debt, had holes in his shoes, ate doughnuts and coffee. Proposed to singer Dolores Reade over the phone, was married in '32. Today they have four children, Linda and Nora, Tony and Kelly—all adopted.

**The Alert Poultryman**  
ANSWERS YOUR QUESTIONS  
Q. My birds just won't perk up after disease. What shall I do?  
A. Follow up with Dr. Salsbury's Avi-Tab! Most serious diseases are weakening -- birds get rundown and lose appetite. Avi-Tab puts new life in 'em, stirs the appetite, aids digestion, and builds blood. That's why so many poultrymen depend on Avi-Tab as a follow-up flock treatment after disease. Also, use Avi-Tab as a regular conditioner for the flock.  
**BE ON THE ALERT!** When You Need Poultry Medicines Ask For...  
**DR. SALS'BURY'S**

**GALL & SMITH**  
THURMONT, MD

**A DELIGHTFUL DISCOVERY**  
You've never really tasted Good Whisky until you've tried  
**James E. Pepper**  
COMES IN THREE FAVORITE TYPES:  
• BLENDED Phone 65  
• BONDED Free Delivery  
• STRAIGHT  
ALSO YOUR FAVORITE BRANDS OF BEER AND WINE  
**ROGER LIQUOR STORE**  
DRIVE-IN SERVICE S. SETON AVE. EMMITSBURG, MD.

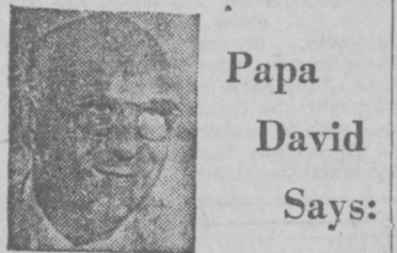
**Around the Studios**  
By Charlie Brooks

Dale Evans Rogers, wife and co-star of NBC radio and television star Roy Rogers, was very happy the other day when she was able to present a check for \$5,000 to Gilbert Hanke, president of the National Association for Retarded Children, to aid in the Association's urgent work. The check represented first royalties on Dale Evans' best-selling book, "Angel

Unaware," This gripping little book is the story of Dale and Roy's youngest child, Robin Elizabeth, who was handicapped from birth, and who died last year at the age of two. Dale wrote the book with the hope of giving encouragement and inspiration to other parents of similarly handicapped children.

Norman Luboff, the choral director of NBC's popular musical program, "The Railroad Hour," has recently completed, with his choral group, an album for Columbia Records entitled "Sweet Dreams".... It consists of melodies especially adapted for small children—lullabies, nursery jingles and folk tunes, and the choristers, whose lovely harmonies have become so familiar to Railroad Hour listeners, will be accompanied only by a flute and a harp. "Sweet Dreams" is scheduled to be released June 1st.

Doug Edwards, well-known CBS commentator heard on the "Wendy Warren and The News" show, went to England to broadcast some of the events leading up to the coronation of Queen Elizabeth. It was a flying trip—with only a few short days to spend in the bustling and keyed-up city of London, but Doug says that the experience of being there at that wonderful time was a fascinating one. "It was living history," he commented.



**Papa David Says:**

(on NBC's "Life Can Be Beautiful")  
"Out of sight, out of mind is a saying which can be all too true. Sometimes, of course, it shows a good balance of feeling to be able to forget people when they are gone—to remember them readily when they return. This, though, can only apply to people who have no silken ties of affection or loyalty or shared experience to bind them to you. I think, then, that when you look at it that way, you'll find there are very few human beings you ought to forget."  
"When a young man says he loves you, Chichi—and he is right there every day to repeat it—it's not so hard to stay in love with him.... It's when he can't be there to say it—and you still believe him—that you are truly in love."  
"I just have one thing to say about having faith in people. Do you know that when you can truly have faith in other people that this means you almost automatically have faith in yourself?"

**Your Personal Health**

**No Laughing Matter**

The doctor tells you, "Keep cheerful. Don't get upset. Take it easy."  
Doctors know that emotional strain affects many diseases and conditions which we used to think of as entirely physical. They want us to take as good care of our mental health as of our physical health.  
But what can you do about it when you are advised to avoid worry? You're supposed to smile when the bills are piling up, the boss picks on you, and newspaper headlines assure you the world is going to the dogs?

There is no magic formula for becoming a little ray of sunshine, but there are things you can do. Suppose your problem is the boss. You can't really hit back at him, but don't take it out on your family. That only makes you feel ashamed of yourself, which is even worse for you than frustration. Hang a punching bag in a convenient spot and put the boss's initials on it. After you've hit it a few times, you'll feel much better. You may even burst out laughing. Beating rugs and pulling weeds are also good medicine for "getting it out of your system."

Most people spend too much time mulling over their own weaknesses and shortcomings. Focus in what is right rather than what is wrong with your personality. Accentuate the positive. Refuse to fret and stew. Make a decision fast and then put the subject out of your mind.

Make an effort to show your love and appreciation for your family. Your bread will come back buttered with a happier home atmosphere. Now and then, be a little selfish. Do something by yourself that you particularly enjoy. On the other hand, face the responsibilities and work that must be done. Get an unpleasant job over with quick. You can tire yourself out wishing you didn't have to do it.

Practice turning off your mind like an electric light so that you can rest and sleep. It's not easy, but you'll get more laughs.  
This column is sponsored, in the interest of better health, by: Maryland Tuberculosis Assn., 900 St. Paul St., Baltimore, Md.

**INVITATIONS ISSUED**

Mr. and Mrs. John D. Hahn, Rocky Ridge, have issued invitations to the wedding of their daughter, Betty, and Mr. Charles H. Eyer, of near Rocky Ridge. The ceremony will be performed Saturday at four o'clock in the afternoon in the Mt. Tabor Lutheran Church, Rocky Ridge. A reception will follow in the Rocky Ridge fire hall.

Buy the Chronicle—\$2 per year

Folks who never do any more than they get paid for, never get paid for any more than they do.

**My Neighbors**  
By BILL PAULSON



"Happiness should be pursued—but not at 75 miles an hour!"

**EXECUTORS' NOTICE**

This is to give notice that the subscribers have obtained from the Orphans' Court of Frederick County, in Maryland, letters Testamentary on the estate of FRANCIS PATRICK KELLY late of Frederick County, Maryland, deceased. All persons having claims against the deceased are warned to exhibit the same, with the vouchers thereof, legally authenticates, to the subscribers, on or before the 27th day of January, 1954 next; they may otherwise by law be excluded from all benefit of said estate. Those indebted to the deceased are desired to make immediate payment.  
Given under our hands this 22nd day of June, 1953.  
FRANCIS R. KELLY  
BERNARD N. KELLY  
Executors  
Trust Copy:—Test:  
HARRY D. RADCLIFF  
Register of Wills for Frederick County, Md. 6/26/53

**USED CARS**  
'50 Dodge 3/4-Ton Pickup; like new; 8,000 miles.  
'42 Dodge Walk-in Delivery Truck.  
'41 Pontiac 2-Door Sedan; Radio and Heater.  
'40 International 3/4-Ton Stake Truck.  
'40 Chevrolet 4-Door Sedan; Heater.  
'37 Chevrolet 2 Door Sedan; \$65.00.  
'36 1 1/2-Ton Chevrolet Stake Truck.  
'36 International 1/2-Ton Pickup Truck.  
'34 Chevrolet 4-Door Sedan; \$50.00.  
'34 Plymouth 4-Door Sedan; \$50.00.  
**SANDERS BROS. GARAGE**  
PHONE 195 EMMITSBURG, MD.

**PUBLIC SALE**  
OF  
**Valuable Household Goods**  
I, the undersigned, will sell at Public Sale on the premises, located at 123 East Main St. in Emmitsburg, Md., on  
**Saturday, June 27**  
STARTING AT 12 O'CLOCK SHARP  
All of the following: Electric Frigidaire Stove in A-1 shape; Thor combination Dishwasher and Wash Machine; Gibson Electric Stove; Electric Refrigerator; 5-Piece Maple Kitchen Set; Piano; floor model Radio; nice glass-door Secretary Desk; Gun Collector's large Glass Door Gun Case. Also some very old Guns and Pistols (collector's items). Dressers; Chairs; Card Table; 2 old Cradles; 2 double Iron Beds and Springs; Utility Cabinets, several Tables, Benches; 2 Fruit Cupboards; Antique Stands; Marble Top Dresser; large Hallrack; several Gas Heaters; 1-room Oil Heater; 2 Bureaus; lots of Children's Toys; 4-Wheel Bike, etc. Lots of Pictures and Frames; several Washstands; Table Lamps; Pots, Pans, Dishes, Bric-Brac, etc.; Rock Wool and Plaster Board; Garden Flow; Wooden Chicken House and many other articles too numerous to mention.  
**TERMS OF SALE—CASH**  
**Mrs. Roy Bollinger**  
CHARLES D. ROOP, Auctioneer  
SIDNEY LEASE, Clerk

**VIRGI**  
"WOULD YOU LIKE TO COME IN AND PLAY WITH MY DOLLS WITH ME?"  
"DOLLS? OH WELL... I'LL TRY IT"

Illustration of a boy playing with dolls.

Illustration of a boy playing with dolls.

**By Len Kleis**  
"I'LL COME BACK AGAIN TOMORROW—PLAYING WITH DOLLS IS FUN!"

**MUTT AND JEFF**  
"OH-H-H-H-H-H SPRING, SPRING BEE-OOTEEFUL SPRING! BIRDS ON THE WING!"

Illustration of a man in a top hat.

"DID YOU SAY THAT THE BIRDS ON THE WING?"  
"WHY, SURE! IT'S SPRING, AND THE BIRDS ON THE WING!"  
"THE BIRD AIN'T ON THE WING! THE WING IS ON THE BIRD!"

**By Bud Fisher**  
"I SPRUNG A SPRING JOKE! TEE-HEE!"

**DANDY, HANDY 'N CANDY**  
Illustration of a boy with a fly.

Illustration of a boy with a fly.

**LATER**  
Illustration of a boy with a fly.

Illustration of a boy with a fly.

**THREE GREAT LINES**  
**FRICK** Sawmills, Threshers, Peanut Pickers, & Balers  
**M-M** Tractors, Power Units, and Equipment for All Farm Needs  
**FOX** Forage Harvesters  
When you want the latest and best in tractors, combines, balers, power units, sawmills, threshers or forage harvesters, look to your nearest Frick Dealer. Along with world-famous M-M, FRICK and FOX lines of machinery, they handle BEAR CAT feed mills, ROSENTHAL husker-shredders and corn-bines, and similar advanced equipment. Get full details and prices now on the machines you need.  
**DEALERS IN THIS AREA:**  
Daniel Y. Yingling Gettysburg, R. D. 1  
Witmer Implement Service Shippensburg, R. D. 3  
Hess Farm Equipment Quincy  
W. L. McCulloh Mercersburg  
Preston M. Showalter Maugansville  
or call or write  
**WAYNESBORO, PA. FRICK Co.**



### Young Democrats To Convene

The Young Democratic Clubs of Maryland will hold their Biennial State Convention at Ocean City Sept. 18-20, has been announced by William T. Winand,

Jr. Convention headquarters will be at the George Washington Hotel. Mr. Winand, named convention chairman by State President James C. Morton Jr., is a member of the Law Student Club of Baltimore, served as former president of that club. Thomas S. Glass of Frederick is chairman of the county Young Democratic Club.

QUALITY  
**Fresh Bread**  
BAKED DAILY  
14c a Loaf  
2 Loaves 27c  
8 Loaves \$1.00  
PICNIC ROLLS, Doz. 25c

**Green's Pastry Shop**  
Phone 211  
EMMITSBURG, MD.

**BABY CHICKS**  
Top Quality CHICKS  
Will be needed this year to meet increased production costs. Producing Good Chicks is Our Business. Maryland-USA Approved Fulcrum Pasted Hatchery.  
Write for Catalogue and Latest Prices.  
**MARYLAND CHICK HATCHERY, INC.**  
Frederick, Md. Phone 439

### BABSON

Writes . . .



**BABSON PARK, Mass., June 25**—Although it is too early in the season for me to make a comprehensive forecast of the 1953 crop prospects, there are a few highlights that may be of interest. But, first, I can say that as of June 1 the outlook for most of the country was fairly good.

**Another Bumper Wheat Crop**  
Wheat crops of a billion bushels or more have been commonplace in this country during recent years. The 1953 crop should be no exception to the rule, notwithstanding the very poor outlook in certain dry sections. Things would look brighter for the wheat farmer if the total crop were smaller, since storage space at the peak of the harvesting season will be at a premium. This will make it difficult, if not impossible, for some farmers to avail themselves of the government loan.

Supplies of old-crop wheat are also heavy. This adds up to burdensome total supplies for the 1953-1954 season, and may well presage some form of government control on 1954 production.

I expect another relatively small rye crop this year, perhaps moderately larger than the 1952 outturn of 15.9 million bushels, but well below the 10-year average of 25.8 million bushels. However, it should suffice, since imports from Canada probably will take up any slack. Despite floods and other setbacks in the southern rice area, another big crop is on the way, and will be needed to meet a good prospective domestic and export demand.

#### Good Corn and Soybean Crops—If

Last spring, farmers indicated that they intended to plant almost as much acreage to corn this year as in 1952, when the final out-turn amounted to 3.3 billion bushels—the second largest corn crop on record. Although excessive rainfall and cool weather delayed plantings in a number of important areas, the setback has been largely made up. Given favorable growing weather and no widespread frost damage later on, we should have another big corn crop this year. This should be good news to hog raisers, since it should help to maintain a profitable corn-hog ratio.

In case of soybeans, I have little as yet on which to base a reliable forecast. However, private reports reaching me indicate that planted acreage this year did not differ very much from that in 1952, and that the crop is developing well. Last year's production amounted to 291.6 million bushels—the second largest on record. Both soybeans and corn are marketed more or less heavily in the fall. For lack of storage place at that time, I expect downward pressure on prices of corn and soybeans.

#### Cotton Prospects

At this early stage, I would not hazard a forecast as to the probable size of the 1953 U. S. cotton crop. Plantings were badly delayed in some sections by inclement weather, but my guess is that cotton farmers finally got in a fairly large acreage, nevertheless. The price support program alone offered them a good inducement to plant rather generously. I should not be at all surprised if this year's crop turned out to be well above average, barring severe weevil or other damage. Following a big carry-over, another large crop would necessitate more price support. Flaxseed is another oilseed crop. The odds are that a fairly large crop is in the offing, since farmers last spring expected to increase acreage 20 per cent. I am inclined to doubt, however, that the final outturn will come up to the 10-year average of 33 million bushels. Large carryover stocks are in government hands, chiefly in the form of linseed oil.

#### What About Future Prices?

Prices of farm products have been declining for more than two years. In fact, they are down 12.8 per cent from January 1951, but still are 3.6 per cent above June 1950—the month in which the Korean War began. This drop occurred despite government price props. Continued large production, dwindling exports, and mounting surpluses are a combination hard to beat. Thus again is the old Law of Supply and Demand confirmed. Farm prices, in general, will be under pressure this fall, but I don't expect them to collapse. Farmers

### ATTEND EXERCISES

Mrs. Robert Grimes and Mrs. Raymond Roop spent the weekend with Mr. and Mrs. George P. Dern of Oaklyn, N. J. They attended the graduation exercises of their niece, Norma J. Christensen, daughter of Mr. and Mrs. Otto Christensen of Philadelphia, Pa. She received her doctor's de-

gree from the Philadelphia College of Osteopathy. The exercises were held Sunday, June 14, at 3 p. m. in the Irvine Auditorium. She is a graduate of Temple University, class of '49. Dr. Christensen will serve her internship this year at the Detroit Osteopathy Hospital, Highland Park, Mich. Following the graduation a buffet dinner was held at the home of Dr. Christensen. Guests were present from New York, New Jersey, Florida, Pennsylvania, Maryland, Washington and Denmark.

should still be able to buy all that they need, although perhaps less than they want, which may prove salutary in the long run.

### Knowledge is Power



1. CAN YOUR HUSBAND SUCCEED?



2. DOES PROGRESSIVE EDUCATION EDUCATE?



3. ARE DONKEYS A PROBLEM?

(1) A great deal depends on you, insists Henrietta Ripberger in Woman's Day magazine. In some cases a wife hinders her husband's success by constantly reminding him of the fact that she holds a job which pays more money than his job. The husband may become dissatisfied with working his way ahead slowly, and quit an otherwise good position. Some women don't let their husbands dress well enough, others belittle their husbands to demonstrate their power over the man.

Wives who want to build up their husbands can do it by showing that they respect him. There is no substitute for this kind of reputation builder.

(2) Fred De Armond writes in the Freeman magazine that it does not. He traces the beginnings of progressive education in this country to the philosopher John Dewey, who believed that education should be tied more closely to the business of living. Dewey held that children's natural impulses should be given more freedom.

A child develops best, he claimed, if he tastes a great deal of victory and very little defeat.

In many progressive schools, writes De Armond, children were put on an intellectual diet of lollypops. But it turned out that, without discipline and drilling, the average student did not learn to read, write, spell, or figure with ease.

(3) They certainly are in California. The state legislature recently was on the ears of a dilemma over two exactly opposite bills, according to Don C. Trenary of the Milwaukee Journal. One bill would give property owners the right to shoot wild burros; the other would throw them into jail for doing it. The trouble came from burros which were turned loose by, or slipped away from, desert prospectors. The burros thrived, they have proved a match for the local enemies, including mountain lions.

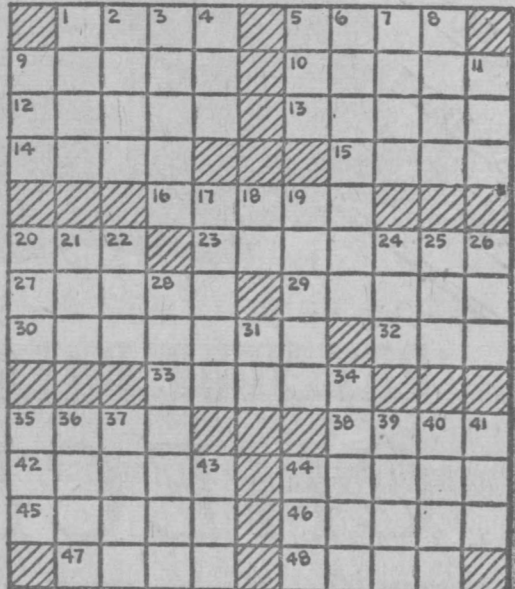
### CROSSWORD PUZZLE

LAST WEEK'S ANSWER

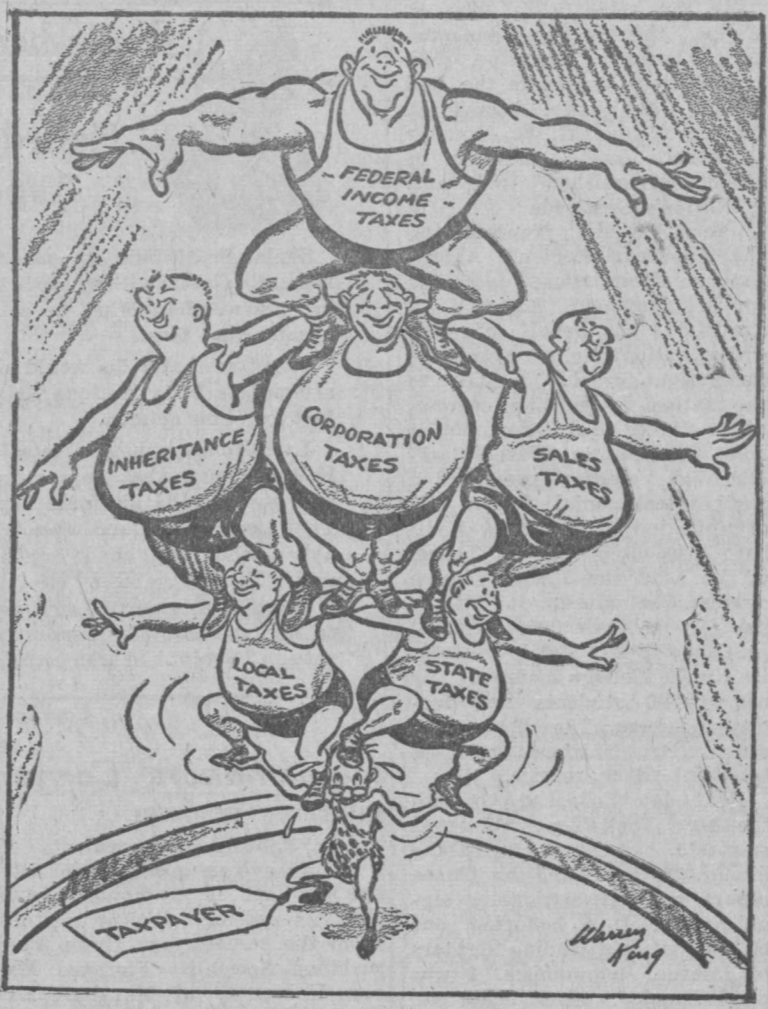


P-35

- ACROSS**
- Outer covering of a tree
  - Cicatrix
  - Worth
  - Egyptian dancing girl (var.)
  - Light sarcasm
  - Piece of furniture
  - Incite
  - Christmas song
  - Merchandise
  - Marsh
  - Apprehends
  - Aside
  - Perfect
  - Stays
  - Crooked
  - Percolates
  - To long for
  - Mist
  - Sprite (Shakespeare)
  - Collier
  - Grievous
  - Follow
  - Headland
  - Afternoon receptions
- DOWN**
- Fishhook
  - Genus of lily (S. A.)
  - Stunted things
  - Part of a lock
  - Perched
  - Rattled, as chains



### PILING ON THE LITTLE GUY!



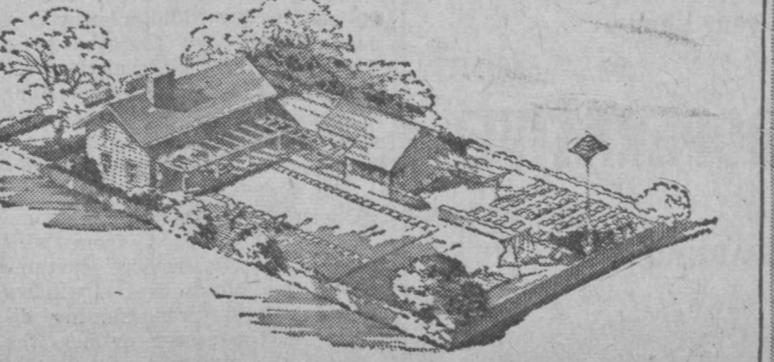
### Families Are Finding Fun In Their Own Backyards

More and more homeowners today are turning to their own backyards for family fun and relaxation. The trend, noted in an article in Home Modernizing, is to "turn" the house away from the street and utilize every inch of the lot as part of the family's living space.

The sketch at the right shows how many homeowners use their lots—a house, garage, clotheslines and a couple of shade trees.

The sketch below shows what can be done to derive the maximum pleasure from the same fairly small lot. It includes many of the major elements of outdoor living—all tied together in a pleasing pattern.

A horizontal trellis roof over-



### DAUGHTER BORN

A daughter was born Saturday to Mr. and Mrs. Robert Joy at the Warner Hospital, Gettysburg. Mrs. Guy Gehhart, Emmitsburg and Mrs. Myrtle Fisel of Greenmount were admitted as patients this week to the Warner Hospital, Gettysburg.

Elephants and falcons often are used by man as domestic animals, but they do not normally breed in captivity.

To practice what you preach

is easy—suppose some people tried to preach publicly what they practice.

**FOR SALE**  
2 repossessed Singer Electric Consoles. May be purchased for balance due. Hurry!  
**SINGER SEWING CENTER**  
11 North Market Street  
FREDERICK, MD.

**NEW SUN-BACK COTTONS**  
WITH & WITHOUT BOLEROS  
\$2.98 TO \$8.98  
NINE STYLES—SLEEVELESS BLOUSES  
SHORTS & BATHING SUITS  
**MARGARET THOMPSON'S**  
E. Main St. Phone 3771 Thurmont, Md.

**TO BALTIMORE**  
2 TRIPS DAILY  
ONLY 1.45 One Way  
Plus U. S. Tax  
Bus tickets to any point in the U. S.  
EMMITSBURG, MD.  
Public Square Phone 47  
**BLUE RIDGE LINES**

**ONE-DAY SERVICE**  
**QUALITY RECAPPING**  
Latest Methods of Manufacture!  
ALL WORK FULLY GUARANTEED  
**NEIGHBOURS ESSO STATION**  
David L. Neighbours, Prop.  
Rt. 15 South Phone 72-F-2 Emmitsburg, Md.

See the Nation's Finest Line of  
**TELEVISION**  
and  
**Electrical Appliances**  
At **WILLIAM S. HOOD**  
Don't take chances! Protect your investment! For lasting and complete satisfaction, buy your television and electrical appliances from William S. Hood, Western Maryland's Largest TV and Appliance, Sales and Service Organization.  
William S. Hood is headquarters for such famous names as: Bendix, RCA Victor, Kelvinator, Youngstown, Spartan, Pfaff, and many others . . . it's got to be good if it comes from Hood.  
**WILLIAM S. HOOD** 4 BIG STORES  
STORE HOURS: Weekdays 3 p. m. to 9 p. m.  
Saturday, 12 Noon 'til 9 p. m. Closed Thursdays.  
410 West Main Street Phone Emmitsburg 14

**MADAME JEAN**  
"American Reader"  
Advice given on all affairs of life, such as love, marriage and business. Bring your problems to this gifted advisor and have your mind put at ease. She can solve your problems where all others fail. You must be satisfied or your money will be refunded. You will find Madame Jean far superior to any reader you have consulted. One visit to her will prove to you how different from other readers she is.  
READINGS ARE STRICTLY CONFIDENTIAL  
READINGS DAILY AND SUNDAY  
Look for Hand Sign No Outside Calls  
Route 32 Waynesboro Highway, Emmitsburg, Md.  
Near Miller's Service Station Hours: 10 a.m. to 9:00 p.m.

**GOLDEN JUBILEE**  
—1903 TO 1953—  
For the past 50 years the Ford Motor Co., pioneers in the automotive field, has kept pace with modern automotive demands and now brings you the 50 years of engineering science packaged in the  
**NEW FORD CARS**  
Be sure and see them during the celebration of our  
**50TH ANNIVERSARY**  
ALL DURING MONTH OF JUNE  
SALES SERVICE  
**SPERRY'S GARAGE**  
"Ford Dealers Since 1927"  
Phone 115 Emmitsburg, Md.

Business Services

PATRONIZE our advertisers. These firms are reliable and have proven through the years that they handle only quality products and offer skilled professional service and advice.

**GAVER'S ELECTRIC SERVICE**  
Prompt Service  
Wiring & Maintenance  
Phone 135-J  
Blue Ridge Summit, Pa.

**DR. H. E. SLOCUM**  
OPTOMETRIST  
EYE EXAMINATIONS  
COMPLETE OPTICAL SERVICE  
OFFICE HOURS  
MONDAY: 6:30 TO 8:30 P. M.  
WEDNESDAY: 2 P. M. TO 8 P. M.  
19 EAST MAIN STREET  
EMMITSBURG, MARYLAND

**DR. W. F. ROUZAHN**  
CHIROPRACTOR  
Phone 86-F-14  
Emmitsburg Maryland

**S. L. ALLISON**  
Funeral Director  
and Embalmer  
Emmitsburg, Md.  
Efficient—Reliable  
Service  
PHONES  
Emmitsburg 88  
Fairfield 6

**Flowers**  
FOR ALL OCCASIONS  
**CREAGER'S Florist Shop**  
PHONE THURMONT 4221

**Musical Instruments**  
Of All Kinds  
Rental Plan Available  
**Menchey Music Service**  
18 York St. - Hanover, Pa.

**Unexcelled**  
WATCH  
JEWELRY  
LIGHTER  
Repairing  
**GAY JEWELRY**  
Carlisle Street  
GETTYSBURG, PA.

**DR. D. L. BEEGLE**  
CHIROPRACTOR  
Emmitsburg Maryland

**WINDSTORM INSURANCE**  
FIRE — AUTOMOBILE LIABILITY  
**J. WARD KERRIGAN**  
100 East Main St.  
Phone 32 Emmitsburg, Md.  
"Insure With Confidence"

THE GAS SERVICE PEOPLE PREFER  
**Happy Cooking**  
For Cooking - Water Heating  
Refrigeration - Heating  
**THE MATTHEWS**  
EMMITSBURG, MD.  
Phone 183-F-2



**LOOKING AHEAD**

BY GEORGE S. BENSON  
President—Harding College  
Secoy, Arkansas

**Honors For Conspicuous Citizenship**  
About the same time that Whittaker Chambers, the Communist spy courier, was receiving top-secret documents from a high-placed U. S. government official named Alger Hiss, for transfer to Russian agents, Dr. J. B. Matthews, chief research investigator of the House Un-American Activities Committee, was delivering to the Dept. of Justice a confidential list of 1124 alleged Communists, fellow-travelers, and sympathizers within the Federal government.

As one of the best informed men in America on the Communist conspiracy, Dr. Matthews has been instructed by the House of Representatives to prepare the list. Most of our Congressmen wanted to root out the traitors and potential traitors. The House appropriated \$100,000 for the Justice Dept.'s use in further investigations of the Federal employees named in the Matthews report. Yet, no effective action was taken.

**Astonishing Facts**  
On the Matthews secret list of suspected subversives then within our government were names of a number who, years later, were to be publicly identified as important members of the conspiracy. High on the list was the name of Alger Hiss! Eight years before Whittaker Chambers exposed Hiss to a grand jury, Dr. Matthews had exposed him to Attorney General Francis Biddle. Yet Hiss remained, and was elevated to ever more influential positions in the government!

Dr. Matthews was blocked by powerful men inside our government; and for 15 years he has been smeared by the Communists, their fellow-travelers, and their shallow-minded but sometimes influential dupes. But he never has quit fighting the conspirators. Until he became an investigator for the House Un-American Activities Committee, he had been one of the most popular educators on the college lecture circuit, speaking on campuses from coast to coast. When he began to fight communism he lost his popularity. In 15 years, while serving the House committee and during eight years following his resignation, he was invited to only two college campuses. I'm proud that Harding College was one of them.

**His Friends Gather**  
A few months ago a testimonial dinner was given for Dr. Matthews at the Waldorf-Astoria in New York. His friends came from all over the

**Gem Theatre**  
EMMITSBURG, MD.

This theater is air-conditioned for your comfort. Come to the coolest place in town for an evening of entertainment.

**Fri.-Sat. June 26-27**  
"SAN ANTONIO"  
ROD CAMERON  
ARLENE WHELAN  
Also Chapter 14 Dick Tracy vs. Phantom Empire.

**Mon.-Tues. June 29-30**  
"BATTLE CIRCUS"  
HUMPHREY BOGART  
JUNE ALLYSON

**Wed.-Thurs. July 1-2**  
A favorite star now on the screen in a Technicolor musical.  
DONALD O'CONNOR  
"I LOVE MELVIN"  
DEBBIE REYNOLDS  
UNA MERKEL

**THIS YEAR GO THE PROFIT WAY WITH YOUR HOGS**

- Our Preeminent Hog Feeds are built to make you more profit.
- Keep cost down by using your home-grown grains—adding our Fortified Supplement.
- Our Service is as near as your phone.

**THURMONT COOPERATIVE**  
Phone 3111  
ROCKY RIDGE WAREHOUSE  
Emmitsburg 55-F-5

**Woodsboro Livestock Market**

**Quotations**

The following quotations are those paid at the weekly auction of the Woodsboro Livestock Market, Tuesday:  
Butcher cows, medium to good, \$10.25-11.75; butcher cows, canners and cutters, \$7.00-9.00; butcher bulls, \$14.00; stock steers small, \$70.00; stock heifers, \$51-

\$190.00; stock bulls, per head, \$86.00; dairy cows, per head, \$90.00-193.00; good choice calves, 190 to 250 lbs., \$23.00-24.25; 160 to 190 lbs., \$22.00-25.25; 140 to 160 lbs., \$19.25-24.25; 125 to 140 lbs., \$21.00-23.00; light and green calves, \$6.00-20.00; lambs, \$17.75-18.00; good choice butcher hogs, 160 to 190 lbs., up to \$26.00; 275 to 300 lbs., \$21.50; good butcher sows, \$20.00-21.00; heavy boars, \$12.75; feeding shoats, per cwt., up to \$27.50; pigs per head, \$8.50-11.00; old fowl per lb., 16 1/4c; young fowl

per lb., 25-29c; ducks, 19c lb.; rabbits, 90c-\$1.05 per head; bacon, per lb., up to 38c; lard per lb., 9c; shoulders, 41c lb.; hams, up to 81c lb.

**HEALTH OFFICER TO ADDRESS LOCAL GRANGE**  
The Emmitsburg Grange invites the public to hear Dr. Forbes H. Burgess, health officer of Frederick County, speak at its next meeting Wednesday, July 1, at 8:00 p. m. in the Emmitsburg High School. A film of special interest to the public on

"Home Accidents" entitled "Miracle in Paradise Valley" will be projected. There will be an open discussion concerning the role of the County Health Department during epidemics. Parents will be interested to know that Dr. Burgess has been requested to discuss polio and yellow jaundice.

The surest way to preserve peace will be to fight all future wars on the pay-as-you-enter plan.

**PUBLIC SALE**  
TUESDAY, JUNE 30

Sale Starts at 6 P. M. Sharp  
The undersigned, going to California, will offer complete household furniture from attic to basement at public sale at Zora, Pa., one block off the Emmitsburg Road, second house from Mrs. Shuff's, by Gingell Quarry. The following items included:  
Norge gas range; Westinghouse refrigerator with full width freezer; Duo-Therm oil burner with fan; oak dinette set; chrome breakfast set; Westinghouse roaster; oak bedroom suite; twin bedroom suite; three wool rugs; 20" bicycle; 24" bicycle; cooking utensils; washing machine; lawn mower; other items too numerous to mention.  
This furniture is all practically new, in perfect condition. Anyone looking for good furniture doesn't want to miss this sale.  
E. L. SMITH  
Fairfield Road, R. 2  
Clair Slaybaugh: Auctioneer

**OUR DEMOCRACY**—by Mat

**WELL BEGUN IS HALF DONE**  
IF CORN IS KNEE HIGH BY JULY, AN OLD SAYING GOES, THE FARMER WILL HAVE A BOUNTIFUL CROP, COME HARVEST TIME. AND THE CHANCES ARE THAT, ONCE WELL ESTABLISHED, THE CORN WILL COME THROUGH.



IF A FAMILY IS WELL STARTED ON THE PATHS OF THRIFT, THE CHANCES ARE THAT, BY PUTTING MONEY REGULARLY INTO LIFE INSURANCE AND SAVINGS, IT WILL REAP A BOUNTIFUL HARVEST OF FINANCIAL SECURITY IN ITS LATER YEARS

**From where I sit... by Joe Marsh**

**Heard About the Electric Weather Predictor?**

Squint Smith built up quite a reputation last month by predicting the weather. What he said usually came true.  
It got so that folks would sit around his little Antique Shop just to get his opinion.  
Last Monday, though, he said he didn't know what the weather was going to be like next day. That surprised us and when we asked what happened, Squint said, "Slipped up on my electric bill and was turned off. I'll get to my radio again tomorrow though." Squint had been getting the weather over the radio—just like anyone else!  
From where I sit, that's the way it goes with some "experts." They often don't have any more inside information than you can get for yourself. Like those who "know" cider is the only thirst-quencher after a day's work. Far as I'm concerned, I'll take a temperate glass of beer. But—I won't try to "predict" your choice for you.  
Joe Marsh

**Homemakers' Corner**  
Buy the Chronicle—\$2 per year

**LIGHTING FOR TV**  
The lighting arrangements of a room have as much to do with eye comfort in watching television as getting a clear picture from the screen, says Home Furnishings Specialist Florence Mason, University of Maryland Extension Service.  
New owners of television sets often have the mistaken idea that the room should be entirely dark when the set is turned on. Watching a bright screen in an otherwise dark room may be almost as tiring to the eyes as driving against the glare of oncoming headlights on a dark night. Miss Mason says lighting specialist have pointed out for years that the sharp contrast between a spot of bright light against surrounding darkness can cause eye fatigue.  
Subdued general illumination of the room is suggested to avoid both glare and gloom. To balance the bright light from the screen, use low light or soft, indirect light, placed at the back of the television set, above it or on either side. However, lights don't need to be turned down if light is spread evenly throughout the room.  
No light should be located directly in the line of vision toward the screen. It will interfere with a clear picture and tire the eyes. Nor should light be located where it will reflect on the screen. The reflection causes a bright spot which conceals part of the picture. Avoid light shining directly on the screen, too.  
Daylight viewing calls for some adjustment of light from windows. This may require curtains or venetian blinds over a window to keep light from shining directly on the screen or into the eyes of the viewer.

**ALL FARMERS KNOW:**  
The Good That Goes Into an Animal is What Goes Through His Mouth!  
  
That is Why More Farmers Daily are Switching to  
**FAMOUS HORNCO FEEDS**  
**ZURGABLE BROTHERS**  
Oliver Sales & Service  
Rt. 15 South Phone 156 Emmitsburg, Md.

**PAY YOUR BILLS BY CHECK!**  
SAVE miles of steps and hours of standing in line. HAVE a bonafide receipt for every payment. KNOW whom you paid how much for what. STEP IN and see how easy it is to enjoy all the conveniences and safeguards of your own checking account.  
2% Interest Now Being Paid on Savings Deposits  
THE FARMERS STATE BANK  
EMMITSBURG, MD.  
Member of Federal Deposit Insurance Corp.

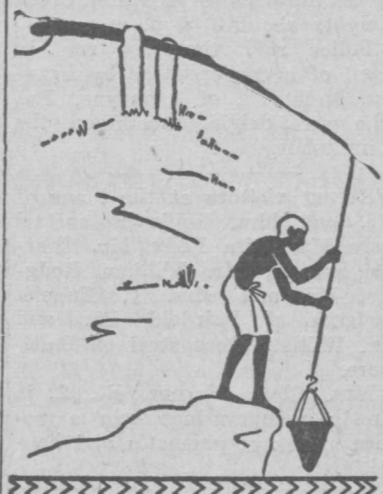
**FIREMEN'S CARNIVAL**  
FAIRFIELD, PA.  
**JULY 2, 3, 4**  
Refreshments, Games, Exhibits, Kiddie Rides, Other Amusements!  
**SPECIAL EVENTS**  
THURSDAY—The Novelaires from Hanover, Pennsylvania.  
FRIDAY—Fairfield High School.  
SATURDAY—Knights of the Road, Station WCHA, Chambersburg, Pa.  
SATURDAY ONLY  
—ROAST BEEF AND CHICKEN DINNERS—  
Servings Will Begin at 4:00 P. M.

**Racing Resumes  
At Charles Town**

Racing resumes today at the "new" Charles Town course near here and continues through August 8 for a period of 32 days. Post time daily for the first race is 2 p. m. (EDT).  
Under supervision of Leeds K. Riley, secretary of the Charles Town Jockey Club, Inc., operators not only of the local three quarters of a mile oval, but also the modern mile Waterford Park track at Chester, W. Va., this

plant has been put in spic and span shape along with notable improvements to the clubhouse and the paddock.  
Mr. and Mrs. George Combs and son, Arlington, Va., spent the weekend with relatives and friends here.  
Miss Mary Kessler, Seton Institute, visited over the weekend with her parents, Mr. and Mrs. James Kessler, S. Seton Ave.  
No one outgrows the need for milk.

**It Began  
In Egypt**



**IRRIGATION**  
By JAMES C. FRENCH, M.A., F.R.C.  
Curator, Rosicrucian Egyptian Museum

Ancient Egypt originated the science of irrigation. The land of Egypt in the desert plateau of the northeast portion of the African continent was really formed by the action of the Nile river. Through endless ages the river deposited its annual load of alluvium in the Valley of the Nile, making it truly one of the most fruitful lands on earth. Because of the abundant flow of water which rushed north each summer, after the rains at the sources of the Nile, and inundated the land, the people found that it was necessary to control the river by building dams and dikes. By the use of canals and sluices, swamps became usable.

Because of variation in the annual Nile flood, the Egyptian had to take steps to assure, by his own labor, a uniform and adequate supply of water for the fields. The paintings and sculptures on the walls of the tombs of Egypt show the peasants bailing up water by the use of the shadoof, at least 4,000 years ago. The shadoof, which is even now used in Egypt to lift water from the Nile to the gardens and fields, consists of a pole resting on an upright post or beam supported by columns of mud or brick. At one end a weight balances the bucket attached to a rope on the other end. From the shadoof, the workers carried water to their gardens in buckets attached to yokes strung across the shoulders.

On a visit to the Rosicrucian Museum in San Jose, scenes of the ancient Egyptians irrigating their fields may be studied.  
Rosicrucian News Service

Classified ads bring results!

**Church Notes**

**ST. JOSEPH'S R. C. CHURCH**  
Rev. John D. Sullivan, Pastor.  
Confessions Saturday at 4 p. m. and 7:30 o'clock.  
Masses Sunday, 7, 8:30 and 10 a. m. Baptisms Sunday at 1 p. m.

**EV. LUTHERAN CHURCH**  
Rev. Philip Bower, Pastor  
Sunday School—9:15 a. m.  
The Service—10:30 a. m. Sermon: "If God Be For Us."

**REFORMED CHURCH**  
Rev. E. P. Welker, Pastor.  
Sunday School—9:30 a. m.  
Worship Service—10:30 a. m.

**TOM'S CREEK METHODIST**  
Rev. Byron H. Keesecker, Pastor  
9 a. m.—Sunday School.  
10 a. m.—Morning Worship.

**PRESBYTERIAN CHURCH**  
Rev. Gideon Galambos, Pastor  
Sunday School at 9:45 a. m.  
Worship Service, 11 a. m.

**TRINITY METHODIST CHURCH**  
Rev. Byron H. Keesecker, Pastor  
9:00 a. m.—Worship Service.  
10:00 a. m. Sunday School.

**ST. ANTHONY'S SHRINE**  
Rev. Stanley Scarff, Pastor.  
Masses at 7:30 and 9:30 a. m.  
Confessions Saturdays at 3:30 and 7:30 p. m.

**JEHOVAH'S WITNESSES**  
47 York St., Taneytown, Md.  
Tuesday, 8 p. m., Bible Study from book: "This Means Everlasting Life." Thursday, 8 p. m., Theocratic Ministry School followed by Service Meeting at 9:00 o'clock.  
Sunday, 10 a. m., Watchtower study; 3:00 p. m., a public talk, "A World Government for the People." Public welcome to all meetings.

**Personals**

Lawrence Goulden, Westminster, and Mr. and Mrs. Roger Goulden and family, Towson, visited Sunday with Mrs. Ida Goulden.

Mr. William Rosensteel visited his mother, Mrs. Mary Claudia Rosensteel, over the week-end.

Mrs. Ethel Jones has returned to her home here after spending several weeks in Baltimore visiting relatives and friends.

Mrs. Edward Gunther spent the week-end visiting at the home of Mr. and Mrs. Harry Gelwicks and Mr. and Mrs. William Bentz.

Week-end visitors at the home of their parents, Mr. and Mrs. Roy Wivell were Corp. Charles E. Wivell of Chincoteague, Va.; Robert L. Wivell, G.M.S.N. and friend, John Wineski of Yorktown, Va., and Miss Margaret Wivell of Frederick.

Sunday visitors at the home of Mr. and Mrs. Roy Wivell were Mr. and Mrs. Arthur Topper and family of Hagerstown, Mr. and Mrs. Louis Topper and family of Emmitsburg, Mrs. Joseph Wivell and son, Joey, and Miss Pauline Orndorf.

Dr. Charles J. Rowe, Mrs. James W. Carter Jr. and son, Jimmie of Washington, D. C., are visiting with Miss Carrie B. Rowe.

Mr. and Mrs. John E. McMurtagh and Miss Eva M. Rowe

of Washington, D. C., were weekend guests of Mrs. James W. Carter Jr.

Miss S. Elizabeth Rowe, R.N., of Washington, D. C., is visiting Miss Carrie B. Rowe.  
First Lieut. and Mrs. Charles E. Rowe of Dobbins Air Force Base, Marietta, Ga., are receiving congratulations on the birth of a son, Edward Grey.

**REXALL 5X MULTI-VITAMINS**  
with RED B!  
Give you 5 times established daily requirement of all vitamins with known minimums.

**Special Introductory Offer:**  
10-day trial size FREE of extra cost with purchase of regular bottle of 50  
**BOTH for only 6.95**

**NOW, IN YOUR Rexall DRUG STORE**

**Houser's Rexall Drug Store**  
W. Main Street  
Emmitsburg, Md.

**MONOCACY DRIVE-IN THEATRE**  
Located between Taneytown and Emmitsburg, Route 32.

\$1.00 Per Car Plus Tax  
Boxoffice opens 8:00 p. m.  
Picture starts at dusk.

Saturday, June 27 only  
2 Extra Special Features 2  
Dale Robertson  
Roy Calhoun

**"THE SILVER WHIP"**  
Shown at 9:15 & 12:20. Also on the same program, this Rib-Tickler Victor Mature, Patricia Neal and Edmund Gwenn in  
**"Something for the Birds"**  
shown at 11 p. m. only.

Sun.-Mon. June 28-29  
Robert Taylor, Elizabeth Taylor & Joan Fontaine in  
**"IVANHOE"**  
In Technicolor

Tues.-Wed. June 30-July 1  
Are you an adult? This is not a raw picture...but...it is for adults! Children will not understand it so let junior sleep in the back seat while you enjoy  
**"COME BACK LITTLE SHEBA"**  
with Burt Lancaster, Shirley Booth, Terry Moore.

Thurs.-Fri. July 2-3  
Rod Cameron, Arleen Whelan, Forest Tucker in  
**"SAN ANTOINE"**  
Added: Cartoon, Newsreel.

**JULY 4 is a Holiday—So you can sleep late that morning, so why not attend our big**

**HORROR SHOW AT MIDNIGHT**  
on July 3. Come to the Monocacy Drive-In anytime after 10:45 on Friday, July 3 and see our regular picture plus  
**"THE BLACK CASTLE"**  
In Technicolor  
Boxoffice open until 12:45. Regular admission prices!

Will be Open Thursday and Friday Evenings, July 2 and 3, 'til 9 o'clock.  
**CLOSED SATURDAY, JULY 4th**

**Fresh Killed, Ready to Fry**  
**Frying Chickens** lb. **55c**  
**Smok'd Picnics** lb. **49c**  
Midget Braunschweiger 10 oz. 39c ea.  
Crab Meat white 95c lb. claw 85c  
Skinless Franks 49c lb.

St. American Cheese 3/4 lb 15c	Filletts of Perch 1b 30c
St. Lebanon Bologna 3/2 lb 35c	Haddock Filletts 1b 35c
Pollock Filletts 1b 25c	Cleaned Whiting 1b 15c

**BRING IN COUPON No. 6 THIS WEEK and Get Your Kaylan Stainless Steel Slicing Knife for only 39c**  
\$1.60 Value  
with purchase \$10.00 or more  
**Every Woman Wants the Complete Set See It!**

**IDEAL HOME-STYLE SLICED PICKLES** 16-oz jar **19c**  
IDEAL FANCY CALIF. Fruit Cocktail 2 303 cans **49c 37c** No. 2 1/2 can

**TENDER, LARGE, SWEET Farmdale Peas** 2 16-oz cans **29c**

**SPECIAL SALE OF LUSCIOUS CALIFORNIA Cantaloupes**  
They are Jumbo 36 size Pink Meated  
**Extra Special! 23c**

**RIPE CALIF. HONEYDEWS** ea **39c**  
**CALIF. VALENCIA ORANGES** doz **29c**

**SWEET EATING CALIF. PLUMS** lb **23c**  
**CRISP ICEBERG LETTUCE** 2 large heads **19c**

**CRISP CALIF. CARROTS** 2 bchs **17c**  
**New Local Valentine Green Beans** 2 lbs **29c**  
Large Cucumbers each 5c  
Crisp Radishes bunch 5c

**New! Deliciously Different... PINEAPPLE-APRICOT COFFEE CAKES**  
Wait till you taste this delectable combination of pineapple and apricot - you'll be back for more.  
Only **29c**

Va. Lee Peppermint Candy Layer Cake ea **69c**  
Cocoanut Topped Peach Bar Cakes ea **39c**

**Enriched Supreme Bread** large Dated loaf **15c**  
**LOUELLA BUTTER BREAD** White or Whole Wheat - Dated Loaf **25c**  
On a diet? - You'll like Supreme Protein Bread. Try It.

<b>Princess Paper NAPKINS</b> 2 pkgs 80 ea <b>19c</b>	<b>Bala Club Ass't'd. BEVERAGES</b> 2 qt bot 23c
--	---

**Banquet Boned Chicken** 5-oz can **39c**  
**Colo-Soft Tissue** Pastel shades **6 rolls 69c**  
**Heinz Baked Beans** 2 16-oz cans **27c**

**LOUELLA MILK** Homogenized 3 tall cans **38c**  
**PRINCESS MARGARINE** Golden 3/4's **2 lbs 43c**  
**BLACK WALNUT COOKIES** Nabisco 10 1/2-oz **23c**  
**COCOANUT BARS** Nabisco Snack Size **10-oz 23c**

**July Family Circle** On Sale Today **5c**

Price Effective June 25-26-27, 1953. Quantity Rights Reserved.

**GOOD USED SCHOOL BUS**  
42 - Passenger Chevrolet **\$885.00**

**C. W. EPLEY SHOWROOM**  
Chambersburg Street Gettysburg, Pa.

**GOOD USED CARS**  
ALL CARS TRADED ON 1953 PACKARDS  
MOST ARE ONE-OWNER CARS

**Extra Special Bargains**  
1950 Studebaker Coupe, O.D., R&H . \$ 985  
1949 Hudson Convertible Cpe, R&H . 1025  
1942 Pontiac "6" Sedan, R&H . . . . 195

1951 Packard 2-dr., O.D., R&H  
1950 Studebaker Convertible, Automat. Trans.  
1950 Packard 4-dr., O.D., R&H  
1949 Packard 2-dr., O.D., R&H  
1948 Olds "98" Sedan, loaded  
1948 Dodge Club Coupe  
1948 (3) Packards, 4-dr., O.D., R&H  
1941 Plymouth Deluxe Sedan, R&H

1953 PACKARDS ON DISPLAY

**NATIONAL GARAGE CO.**  
Chambersburg Street Gettysburg, Pa.  
USED CAR LOT AT  
**TOPPER'S SERVICE STATION**  
Lincoln Ave. and Harrisburg Rd.

OPEN MONDAY AND FRIDAY EVENINGS 'TIL 9!

**All You Need For An Enjoyable Fourth of July And a Wonderful Vacation**

**DRESSES**  
That will be star performers in Your Summer Wardrobe!

COTTONS	SILKS
NYLONS	BEMBERGS

**5.98**

SUN DRESSES with Jackets or Stoles  
SKIRTS — BLOUSES Everything Designed For A Lovely Vacation!

**TOBEY'S**  
13 Baltimore Street Gettysburg, Pa.

OPEN MONDAY AND FRIDAY EVENINGS 'TIL 9!

**STRAND GETTYSBURG**

SAT.—JUNE 27  
John WAYNE  
Vera RALSTON  
**"DAKOTA"**

SUN.—JUNE 28  
Sterling HAYDEN  
**"KANSAS PACIFIC"**  
In Color  
—plus—  
Stanley CLEMENTS  
**"White Lightning"**

Open Saturdays, Sundays, and Holidays Only—Until Sept.

**DON'T SIMMER THIS SUMMER!**

**MEN'S SPORT SHIRTS**  
100% Nylon . \$4.69  
Van Heusen Rayon Acetate \$2.95 and \$3.50  
Puckered Crinkle Crepe . \$2.95  
Plan Crinkle Crepe . \$1.95  
All Rayon . \$1.95 and \$2.25  
All Colors and Sizes

Boys' Sport Shirts . \$1.49 to \$1.98  
Men's Bathing Trunks . \$1.98

**HOUCK'S**  
CENTER SQUARE PHONE 47

**CLASSIFIED ADS.**

**FOR SALE**

**SPECIAL**—Wallpaper, 20c double roll, up. See Francis Hardman, one-quarter mile north on Waynesboro Road, Emmitsburg. 6/26/2tp

**FOR SALE** — Desirable 5-room concrete block stuccoed dwelling with about 2 acres ground, 1½ miles s. Emmitsburg on Rt. 15. Built only few years ago. Apply Geo. L. Wilhide, phone 160, Emmitsburg, representing G. M. Chapline, Frederick realtor. tf

**FOR SALE**—Washing Machine; excellent condition. Apply Mrs. Robert G. Myers, Emmitsburg. Phone 173-F-3. tf

**WALLPAPER SALE**—Discontinued patterns. Big reductions! **HARRY C. GILBERT** 202 Chambersburg St., Gettysburg, Pa. tf

**FOR SALE**—Seven-room weather-board house with bath; garage and chicken house. Home is in excellent condition; newly painted. Raymond Baker, Frailey Rd. Phone 219-F-12. 6/26/2t

**FOR RENT**

**FOR RENT** — 5-room newly-modeled apartment. Bucher's Restaurant. Phone 72-F-3. 6/19/2tp

**NOTICES**

**FOOD SALE**—Benefit of the Ladies' Auxiliary of the Greenmount Fire Company will be held in Emmitsburg Fire Hall Saturday morning at 9 o'clock.

**WANTED**

**WANTED**—Lady receptionist for office work. Apply **DR. D. L. BEEGLE** tf

**SITUATION WANTED**—The NATIONAL FARM LABOR BULLETIN, is published and mailed to its subscribers twice monthly listing available farm labor, description, qualification, reference and other personal data. Names and addresses of registrants listed are available in almost every state, all phases of farming and range from dairy managers to common labor. Trial subscription fee for (7) months is \$10.00. This service has been organized and operated with integrity and success for more than four years. Send checks to **WORD**

**"Wendy Warren" Star Stars at Home**



Nat Polen, who has little in common with the difficult and moody Mark Douglas he portrays on "Wendy Warren and the News" over CBS, stars in his favorite role as Daddy at home. This picture, (Nat is shown with his older daughter, Wendy Ann, and Mrs. Polen with little Deborah), was one of a series taken recently by Radio-TV Mirror.

**Conservation Of Soil Proves Big Factor In Determining Higher Profits**

The loss of every inch of top soil from farmland in Frederick County means a reduction of up to 10 per cent in annual income in addition to the dissipation of the capital asset represented by the soil, according to the Committee for Conservation Now.

This conclusion is based on an analysis of field tests at agricultural experiment stations in which crops were grown on varying depths of the same types of soil and with the same tillage practices.

In one representative test, corn yields ranged from 60 bushels per acre on 10 inches of top soil down to 25 bushels on two inches, or a difference of four bushels for each inch. With corn yields averaging slightly over 40 bushels per acre in Maryland, such a yield loss would amount to nearly 10 per cent per inch of top soil.

The annual cash loss per inch of top soil is about \$6 out out of around \$64 value for an acre of corn, based on the current corn price. The cash difference from corn raised on two and 10 inches of top soil would be over \$5 per acre.

In other tests, oats yields varied from 120 bushels per acre on 10 inches of top soil to 70 bushels on two inches, a difference of 50 bushels per acre for each inch of top soil. Barley, rye, soybeans, alfalfa, potato, and asparagus yields varied in about the same proportions.

Erosion impairs the productive capacity of the soil by removing organic matter, nitrogen, and clay and silt elements, the Committee explained. Water and wind separate the lighter materials from the coarser and heavier particles and carry them off, leaving less productive material behind. If erosion is severe, the body of the soil itself is carried off. Loss of top soil also reduces the moisture retention capacity of the crop root zone.

Top soil losses have been offset to some extent by increased use of fertilizer, better seeds, crop rotations and better farm management, the Committee said. But soil experts estimate average crop yields would be up to 50 per cent higher today if top soil losses had been prevented in the past 50 years.

The loss of productive capacity of the soil varies by farms and by areas, depending upon the degree of land slopes and past

**Abigail**

(Continued from Page One)

life might depend on a pint of "local" blood. Well let's make it up to them by attending the Block Party which they have worked so hard to make a success. See you there?

Mrs. Harriet Allen and Mrs. Charles Stambaugh of Rocky Ridge this week were admitted as patients to the Warner Hospital.

Recent visitors at the home of Mr. and Mrs. Louis Rosensteel were Mrs. Rita Felix, Mr. Charles Harner, Mr. William Rodgers, Mr. and Mrs. T. Eugene Rodgers of Fairfield, Pa., and Mr. William Rosensteel of Baltimore.

Mrs. Clara Harner, Rt. 2, is slowly recuperating from a severe attack of pematia and hepatitis.

**Fairfield Lad Struck By Car**

Donald Koontz, 12, of Fairfield Rt. 2, was taken to the Warner Hospital Monday afternoon with a laceration of the scalp, suffered, according to Pennsylvania State police, when he was struck by an automobile at Marsh Creek Heights about 3:30 p. m.

Police said the boy ran in front of a car operated by Frances Metz, 33, of Lemoyne, Pa., who was driving north on the Emmitsburg Rd.

Lawrence Goulden, Westminster and children, Towson, visited Sunday and Mr. and Mrs. Roger Goulden day with Mrs. Ida Goulden.

**LEGION DANCE TONIGHT!**

Legion Home—North Seton Avenue  
Air-Conditioned For Your Comfort

**FRIDAY, JUNE 26**

Music by Ozzie Fagan's Orchestra

**YOU DON'T HAVE TO LIVE IN AN OVEN**



When the thermometer climbs up into the 90's—do you look forward to home with pleasure, or with dread?

Barrett Rock Wool can make your home a place to relax from the heat of day... keep your bedrooms cooler—your disposition happier... make house work and entertaining a pleasure.

No cash—years to pay.

Ask for a free inspection and estimate.

**INSULATE with Barrett ROCK WOOL**

**CLOYD W. SEISS**

LUMBER YARD

12 DePaul St. Phone 89 Emmitsburg, Md.

**EICHOOLTZ**  
for  
**TYPEWRITERS**  
Adding Machines  
Service & Supplies  
Phone 101  
NEW OXFORD, PA.

**BECKER'S SPECIALS**

- Ladies' Dresses ..... \$9
  - Table-top Gas Range ..... \$8.95
  - Steel Tel. Fishing Rod, Reel 5.95
  - Guitarlin ..... 5.95
  - Boys' Pants ..... 1.00
  - Camp Kerosene Stove ..... 5.95
  - Electric Refrigerators ..... 59.95
  - Roller Skates ..... .89
  - Men's Suits ..... \$5.95 to \$18.95
  - Men's Pants ..... 1.98
  - Funny Books ..... 8 for 25c
  - Ice Chest Refrigerator ..... 5.95
- Store Open: 10 a.m. to 8:30 p.m.

**BECKER'S** 249 S. Wash. St. GETTYSBURG

**MAJESTIC**  
GETTYSBURG, PA.

Thur.-Fri.-Sat. June 25-26-27  
Jose FERRER in  
John Huston's  
"MOULIN ROUGE"

Color by Technicolor

Sun.-Mon.-Tue. June 28-29-30  
The Big Picture That  
Stirs Every Emotion

"TITANIC"  
Clifton WEBB  
Barbara STANWYCK

Starts Wed.-July 1-4 Days  
Dean MARTIN  
Jerry LEWIS

"SCARED STIFF"

**YOUR BIG CHANCE**

To Share in the V.F.W. Community Free Ambulance Program

**BLOCK PARTY**

THREE BIG NIGHTS---JUNE 25, 26, 27

DePAUL STREET — EMMITSBURG

**FREE! Valuable Prizes FREE!**

Big prizes will be given away each night FREE. You only need to register and be present to be eligible. No Charge.

**LAWN MOWER**  
(VALUE \$26.95)

Donated by  
**MR. & MRS. ROBERT DAUGHTERTY**

**ELECTRIC IRON**  
(VALUE \$14.00)

Donated by  
**ZURGABLE BROS.**

**TRAVELING LUGGAGE**  
(VALUE \$24.95)

Donated by  
**HOKE'S HARDWARE**

**BIG BASKET FRUITS**

VEGETABLES and GROCERIES  
(A Housewife's Treasure)  
Donated by  
**B. H. BOYLE**

**BASKET OF SPIRITS**  
AND SOFT DRINKS  
(Valuable Assortment)

Donated by  
**ROSENSTEEL LIQUORS**

**15 SILVER DOLLARS**

Donated by  
**THE AMERICAN LEGION**

**FOOD STANDS**

**GAMES OF SKILL**

**PRIZES**

**FUN**

Music By EMMITSBURG MUNICIPAL BAND

**Benefit VFW Ambulance Maintenance Fund**

**BINGO**

**CAKE WALKS**

**CONTESTS**

**MUSIC**