

FAIRM STOCK

ANGORAS ARE HIGHLY USEFUL

Animal Is Disease Resistant, Thrives on Detrimental Plants and Is Profitable.

(Prepared by the United States Department of Agriculture.)

The Angora goat, disease resistant, thriving on the twigs, buds and leaves of brush and other detrimental plants, and supplying excellent meat and highly useful hair and skins, is still unknown to most people of this country which is one of the largest raisers of Angoras in the world. These are a few of the interesting facts brought



Yearling Angora Doe.

out in a recent Farmers' Bulletin 1203, The Angora Goat, published by the United States Department of Agriculture, which contains detailed information about these useful animals, from a brief history of their development down to management of goat ranches, the marketing of mohair, and the treatment of diseases.

Texas is the leading goat-raising region of the United States, having more Angoras than all other states combined. Conditions of topography, altitude, climate, and price of land have all joined to help make the ranches successful. Open-brush range, similar to that in Texas, makes the remaining part of the Southwest second in Angora ranging. Many fine orchards in the Northwest stand on land that was brushed off by the goats, and there is much land in that region that is adapted for permanent goat ranging. The Ozarks, in southern Missouri and northern Arkansas, contain many bands of Angoras and will support more on a permanent brush-utilizing basis supplemented with winter feeding. Outside the areas where there is typical goat range Angoras may be used for brush-clearing by handling them much as sheep are handled.

The bulletin may be obtained free by addressing the Department of Agriculture at Washington, D. C.

ALFALFA TEA NOT IN FAVOR

Evidence Does Not Show Any Great Advantage to Be Gained by Use of Liquor.

Alfalfa tea, made by pouring boiling water on hay and allowing it to steep for a few hours, or by stirring alfalfa meal into cool water and straining the mixture after several hours, has been highly recommended from time to time for feeding young animals, but the evidence reviewed by the United States Department of Agriculture does not show any great advantage to be gained through the use of this liquor. Some experiment stations have found that pigs made better gains when cornmeal and middlings were mixed with alfalfa tea rather than water, but the additional gains were hardly enough to pay for the increased expense. Calves fed alfalfa tea made poor gains and suffered much from scours. On the whole, the practice of making this tea for live stock should be discouraged, says the department.

HELP EFFICIENCY OF HORSE

Numerous Inquiries Received at Missouri College of Agriculture for Hitches.

Farmers are making use of power in larger units than ever before. Numerous inquiries for three-horse hitches for wagons and five to eight-horse hitches for plows are being received by the Missouri College of Agriculture, says J. C. Wooley of the agricultural engineering department. The three-horse load will take but little more of the man's time than the two, but his efficiency has been increased 50 per cent.

Oats Best for Sows.
Oats is a much better grain for brood sows than corn, and a mixture of about equal parts of oats and corn is better than either grain alone. Alfalfa or even clover hay will pay good returns when fed to brood sows.

Alfalfa Bad for Horses.

It seems advisable, judging from the results of experiment, not to feed a heavy alfalfa ration with corn to growing horses, particularly to purebreds when seeking the best possible development.

Moline Plow Company Reorganizes

(Reprinted from "The Eastern Dealer.")

Under date of May 11, 1922, the Moline Plow Company, of Moline, Ill., issued the following statement of their reorganization.

"Announcement of the completion of reorganization of the Moline Plow Company was made here today. New plans for the company and its subsidiaries, chief of which will be the Stephens Motor Car Company, were ratified.

"The new company was launched with \$16,000,000 of current assets and with all current indebtedness cleared from its books, except accrued and current expenses and \$70,000 of current accounts.

"The most striking feature of the reorganization is the conversion of \$25,000,000 of indebtedness into \$12,500,000 of twenty-year debentures and \$12,500,000 of first preferred stock—\$7,500,000 of old first preferred stock was converted into \$7,500,000 of new second preferred stock.

"The financial house cleaning was done with unusual thoroughness.

"The assets are net after writing inventories and plants to rock bottom, and ample provision for liquidating all unprofitable departments and obsolete and slow-moving inventories, for possible losses on receivables, and for any reasonable contingency of further readjustments of the business or declines in value.

"A vigorous policy of readjustment and conduct of the business was presented by the directors, the most significant feature of which is the plan of the president to modernize and improve the system of implement sales and distribution. This promises lower prices on implements to the farmer.

"The officers elected are: Frank O. Wetmore, president of the First National Bank of Chicago, chairman of the Board; George N. Peek, president; H. S. Johnson, executive vice-president; R. W. Lea, vice-president and manager of the Stephens Motor Car Company; F. W. Edlin, vice-president and sales manager; C. B. Rose, vice-president in charge of tractor works; H. B. Dimme, vice-president in charge of implement manufacturing; L. C. Shonts, secretary; L. C. Blanding, assistant secretary; F. J. Hoeningman and John Hamnerich, assistant treasurers. The following were elected directors: F. O. Wetmore, G. N. Peek, H. S. Johnson, John E. Blunt, Jr., Merchants Loan and Trust Company, Chicago; C. P. Coffin, Illinois Steel Company, Chicago; Herman Waldeck, Continental and Commercial National Bank Chicago; S. A. Mitchell, Mercantile Trust Company, St. Louis, Mo.; C. T. Jaffy, First National Bank, Minneapolis, Minn.; Rumsey W. Scott, Chemical National Bank, New York City; J. Herndon Smith, St. Louis, Mo.; F. F. Winans, National City Company, Chicago; Henry R. Johnson, Chatham and Phoenix National Bank, New York City; R. I. Barr, Chase National Bank, New York City; Horace Fortescue, Philadelphia National Bank, Philadelphia; H. H. Cleveland, Rock Island, Ill.

Geo. R. Sauble, Agt. Moline Machinery TANEYTOWN, MD.

JOSEPH L. MATHIAS

MEMORIALS

300 in Stock to select from
Buy where you can see the Goods.

WESTMINSTER, MD.

PHONE 127

SHARRER, GORSUCH & STARR

WESTMINSTER, MD.

Carroll County's Big and only Exclusive Clothing Store.

Offers special value in Clothing and Men's Furnishing Goods Stylish Sport and English Cut Suits for Young Men, special values \$15.00 to \$25.00.

Highest Grade, \$40.00 and \$45.00 values for Young and Older men, at \$30.00 and \$35.00.

\$1.00 Shirts, reduced to	85c.
Madras \$1.50 Shirts,	\$1.25
Good Patterns and good Shirts,	\$1.50
Silk Stripe and Woven Madras Shirts,	\$2.00

For Men who want the best in Shirts we have handsome "Manhattan," \$2.50 to \$4.50.

"Faultless" Pajamas and Night Robes for Men and Boys'. Ask to see the new "Sley Coat."

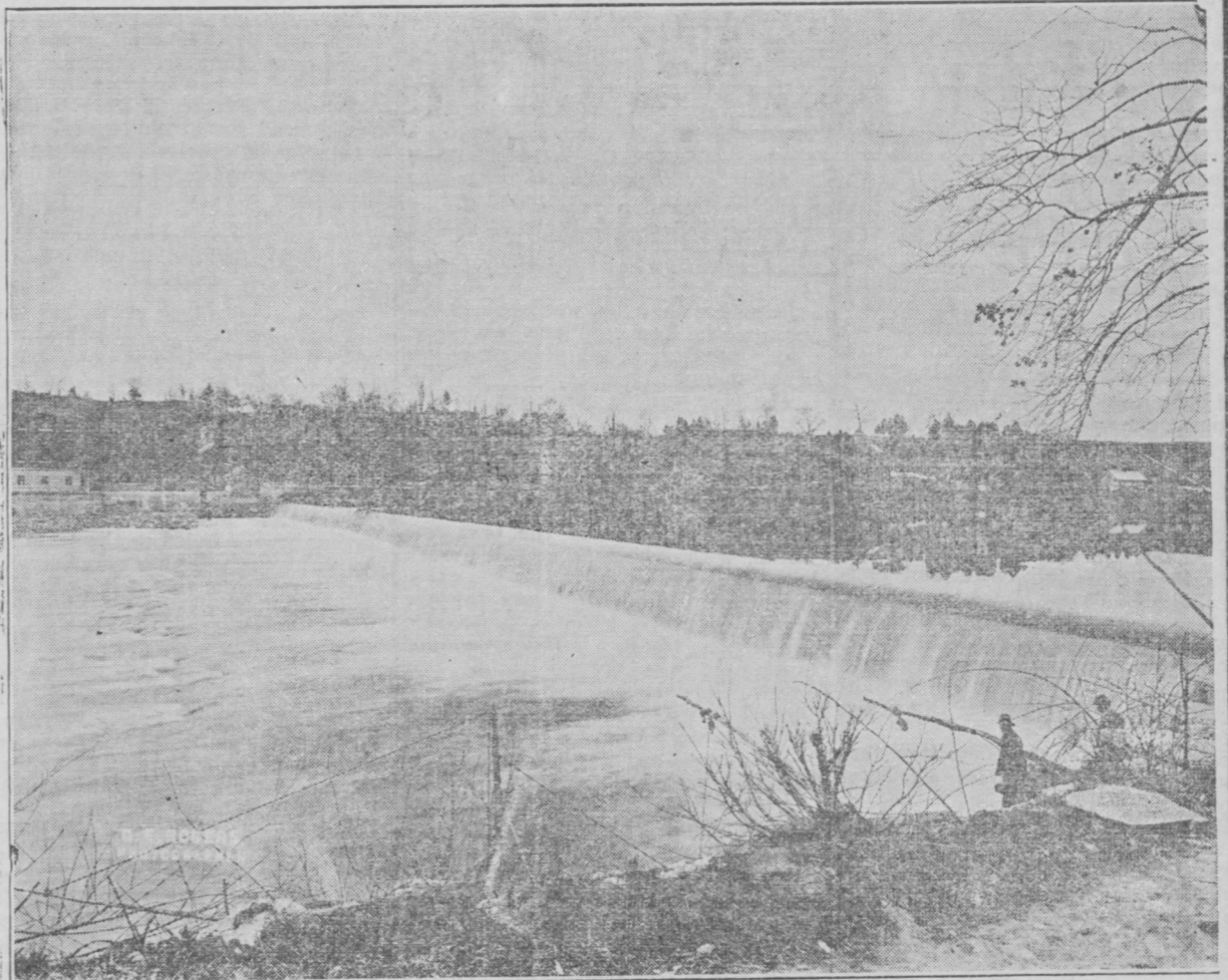
The Best Cottonade and Khaki Pants.

A full cut Work Shirt, 85c.

Genuine made to order Suits.

THE POTOMAC PUBLIC SERVICE COMPANY

OFFERS TO ITS PATRONS AND THE PUBLIC
\$300,000 Par Value—7% Cumulative Preferred Stock



BUSINESS: The Potomac Public Service Company and its subsidiaries generate, transmit and distribute Electric Energy for light and power purposes throughout a territory of approximately 5,000 square miles in Maryland, Virginia, West Virginia and Pennsylvania. The population of the territory served is approximately 250,000 inhabitants and the demand for electric service is constantly increasing, this being especially true with industries which are rapidly turning to electricity as its source of power.

PROPERTY: The Company and its subsidiaries own and operate four Water Power Electric Generating Plants located on the Potomac, Shenandoah and Great Cacapon rivers, approximately 41% of the electric energy developed during the year 1921 having been developed by water power. There are also owned and operated two modern Steam Power Electric Generating Plants, one of which is located near Millville, West Virginia and the other at Security, near Hagerstown, Maryland. In addition to these power plants and the necessary modern high tension transmission lines and transformation stations operated, the Company also owns and operates 118 miles of electric railway with both passenger and freight service, as well as the Gas Service in Frederick, Maryland.

STABILITY: The electric business is of the most permanent and enduring character and the principles of a safe and sound investment are firmly imbedded therein. Practically speaking, electricity, when once installed, is never discontinued and its use is daily increasing.

SECURITY: There was reported for the year 1921 earnings applicable to dividends on the outstanding preferred stock of more than three times the amount required.

OFFERING: \$300,000 par value of the 7% Cumulative Preferred Stock is now offered, subscriptions to be accepted in the order in which they are received. The last offering of these securities was largely oversubscribed.

AUTHORIZATION: The authorization of the issue has been approved by The Public Service Commission of Maryland.

TAX EXEMPTION: This stock is exempt in Maryland from State, County and Municipal taxes. Also exempt from the Normal Federal Income Tax.

QUARTERLY DIVIDENDS: Sent by check February, May, August and November to share-holders of record the 25th of the previous month; 1 3/4% quarterly or 7% a year.

PRICE: \$50 per share. Par value \$50.

The Potomac Public Service Company

Securities Department

Frederick, Maryland.

A 7% Home Investment of Proven Merit

(Further information furnished upon request or can be obtained at any of the Company's offices.)

NOTICE TO CREDITORS.

This is to give notice that the subscriber has obtained from the Orphans' Court of Carroll County, in Md., letters testamentary upon the estate of GEORGE W. HAFE, late of Carroll County, deceased. All persons having claims against the deceased, are hereby warned to exhibit the same, with the vouchers properly authenticated, to the subscriber, on or before the 23rd day of December, 1922; they may otherwise by law be excluded from all benefit of said estate.

Given under my hands this 2nd day of June, 1922.

WALTER T. HAFE, Executor.

Read the Advertisements IN THE CARROLL RECORD.

New Shoes!

New Prices!

The New Shoes we are showing are beauties. We always have had the reputation of selling good Shoes and now that the prices are reduced there is nothing more to wish for. Come in and let us show them to you.

Watch our windows for the New Styles and Prices.

J. THOMAS ANDERS

WEST MAIN STREET

Westminster, Md.

Read the Advertisements

